

56.4-65.9 (mbfs)

1 2 3 4 5 6 7 CC

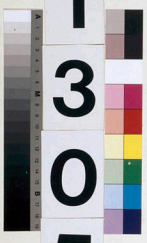
LEG

5
10
15
20
25
30
35
40
45
50
55
60
65
70
75
80
85
90
95
100
105
110
115
120
125
130
135
140
145
150

3
0
3

SITE

1
3
0
5



HOLE

A

CORE

7
H



IW

PAL