

36.8-46.3 (mbsf)

1 2 3 4 5 6 7 CC

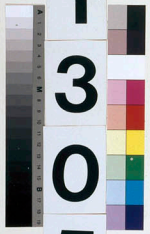
LEG

5
10
15
20
25
30
35
40
45
50
55
60
65
70
75
80
85
90
95
100
105
110
115
120
125
130
135
140
145
150

3
0
3

SITE

1
3
0
5



HOLE

B

CORE

5
H

PAL

