

17.8-27.3 (mbsf)

1

2

3

4

CC

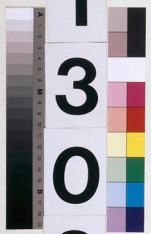
LEG

5  
10  
15  
20  
25  
30  
35  
40  
45  
50  
55  
60  
65  
70  
75  
80  
85  
90  
95  
100  
105  
110  
115  
120  
125  
130  
135  
140  
145  
150

3  
0  
3

SITE

1  
3  
0  
6



HOLE

A

CORE

3  
H



IW

PAL