

77.3-86.8 (mbfs)

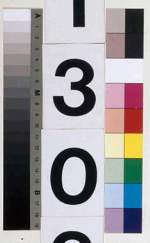
1 2 3 4 5 6 7 CC

LEG

3  
0  
3

SITE

1  
3  
0  
6



HOLE

B

CORE

1  
0  
H

5  
10  
15  
20  
25  
30  
35  
40  
45  
50  
55  
60  
65  
70  
75  
80  
85  
90  
95  
100  
105  
110  
115  
120  
125  
130  
135  
140  
145  
150

