

45-54.5 (mbst)

1

2

3

4

5

6

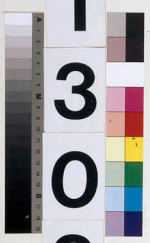
CC

LEG

3
0
3

SITE

1
3
0
6



HOLE

D

CORE

6
H

5
10
15
20
25
30
35
40
45
50
55
60
65
70
75
80
85
90
95
100
105
110
115
120
125
130
135
140
145
150



PAL