

61.6-66.1 mbsf

1

2

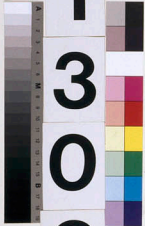
3

LEG

3  
0  
4

SITE

1  
3  
0  
9



HOLE

B

CORE

1  
2  
R

5  
10  
15  
20  
25  
30  
35  
40  
45  
50  
55  
60  
65  
70  
75  
80  
85  
90  
95  
100  
105  
110  
115  
120  
125  
130  
135  
140  
145  
150

