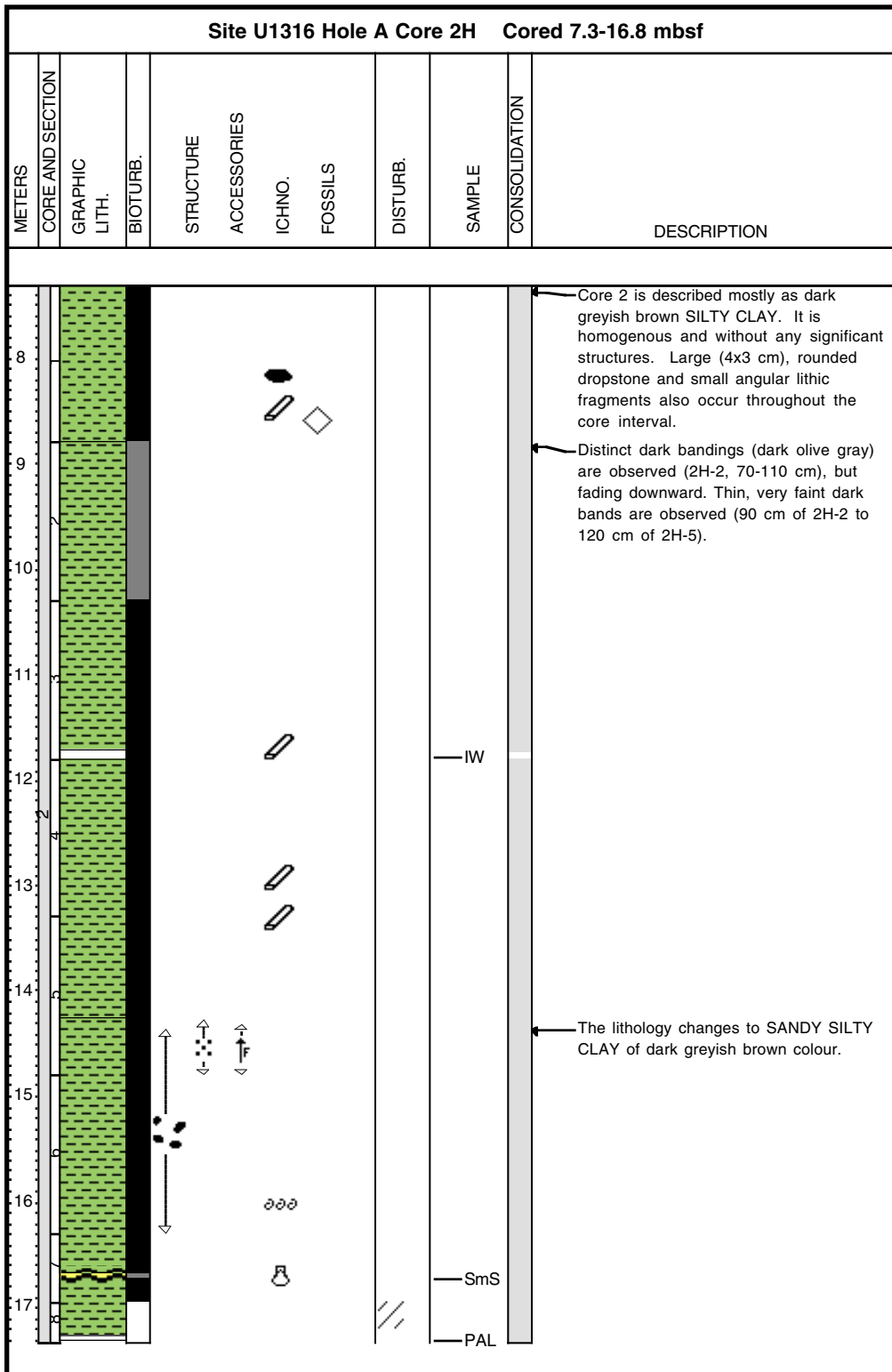
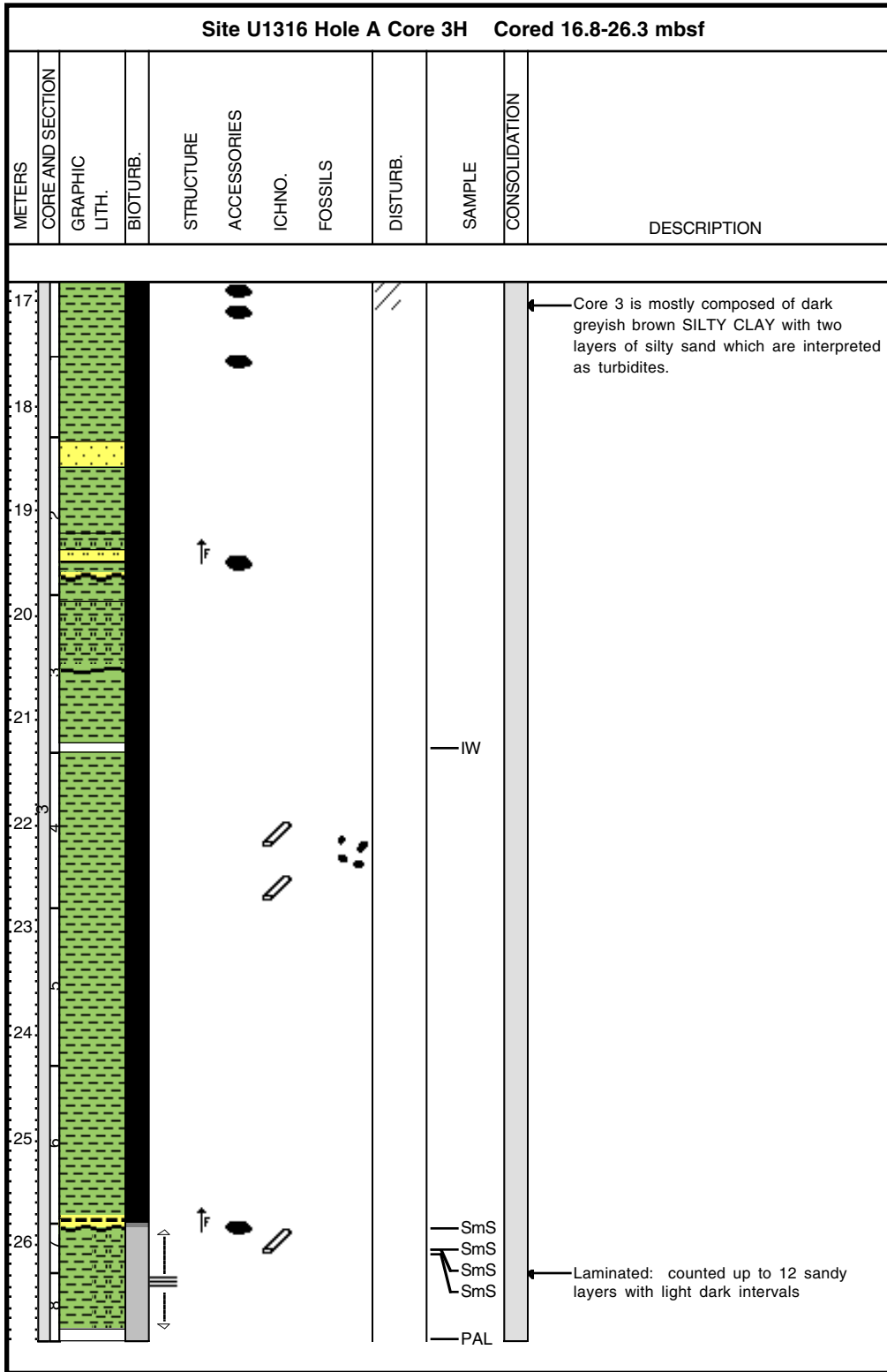


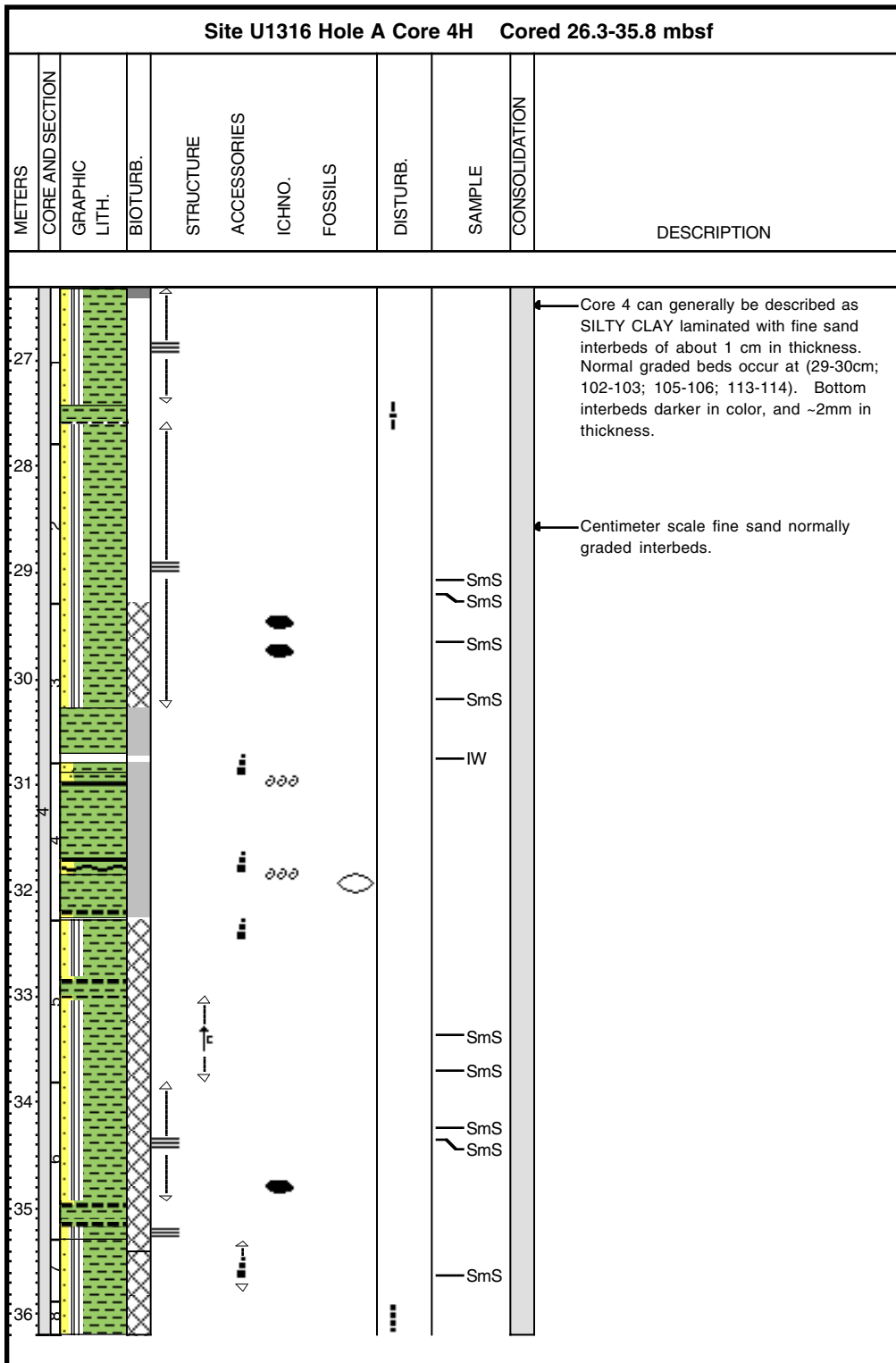
Core Photo



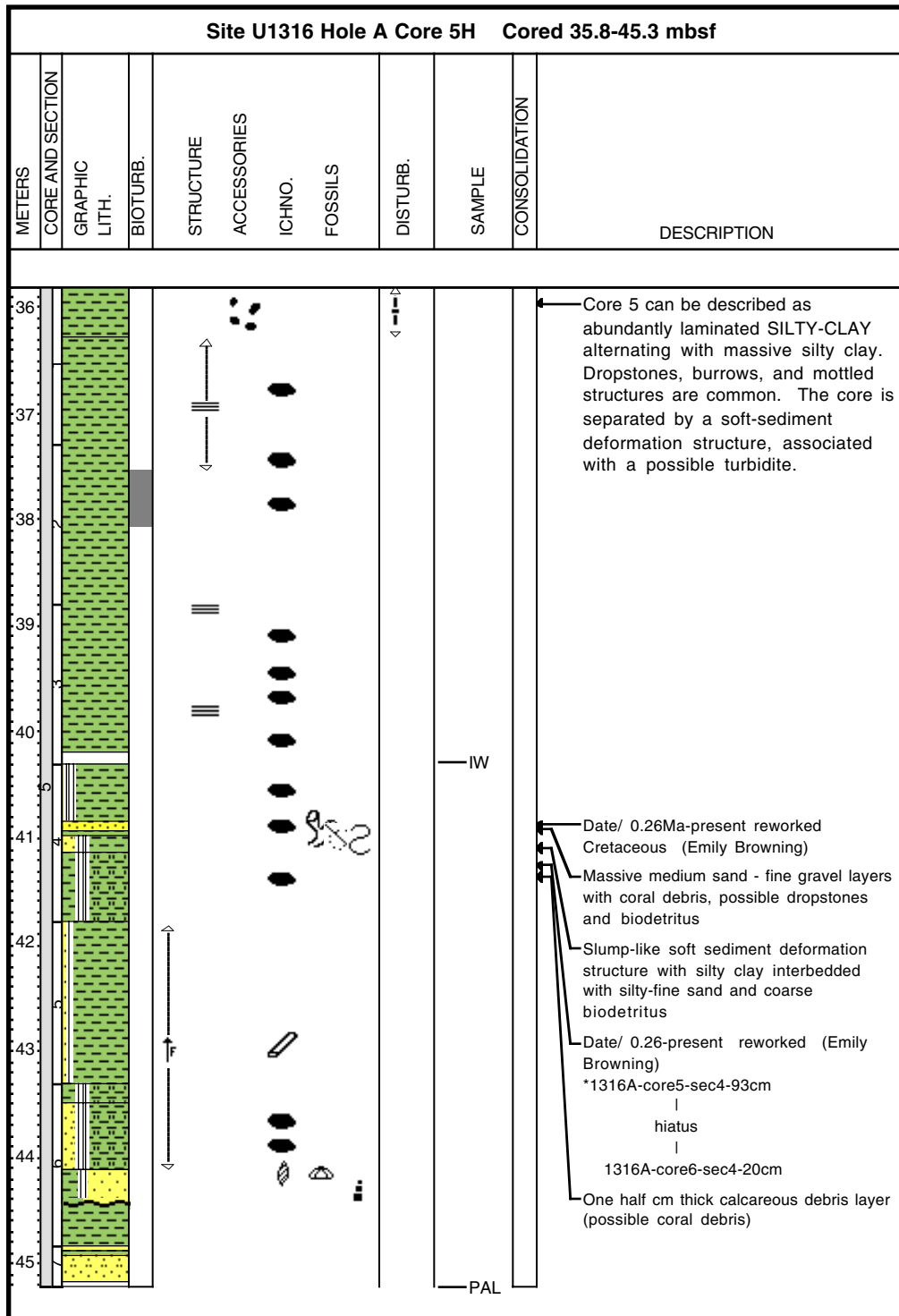
Core Photo



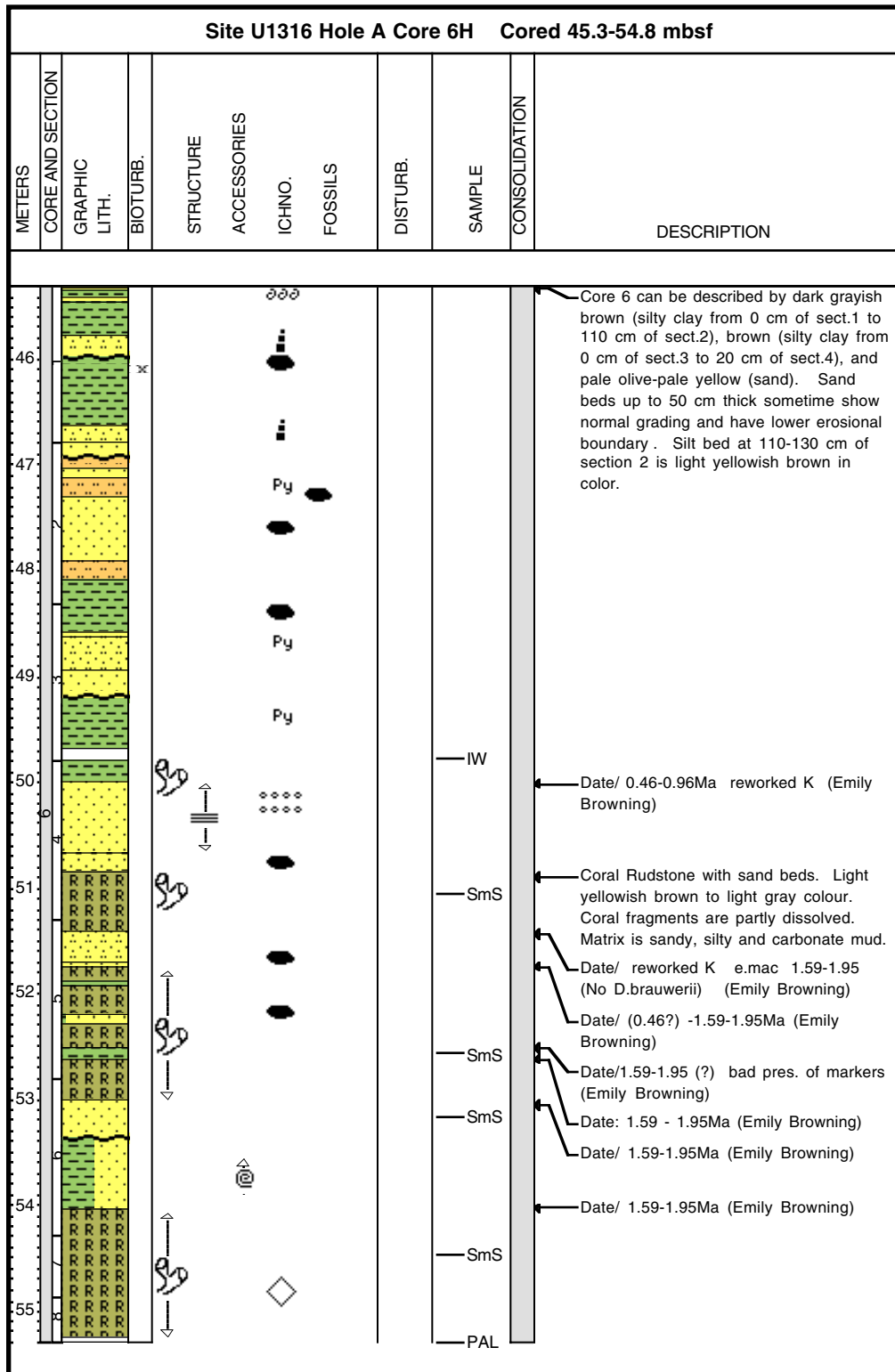
Core Photo



Core Photo



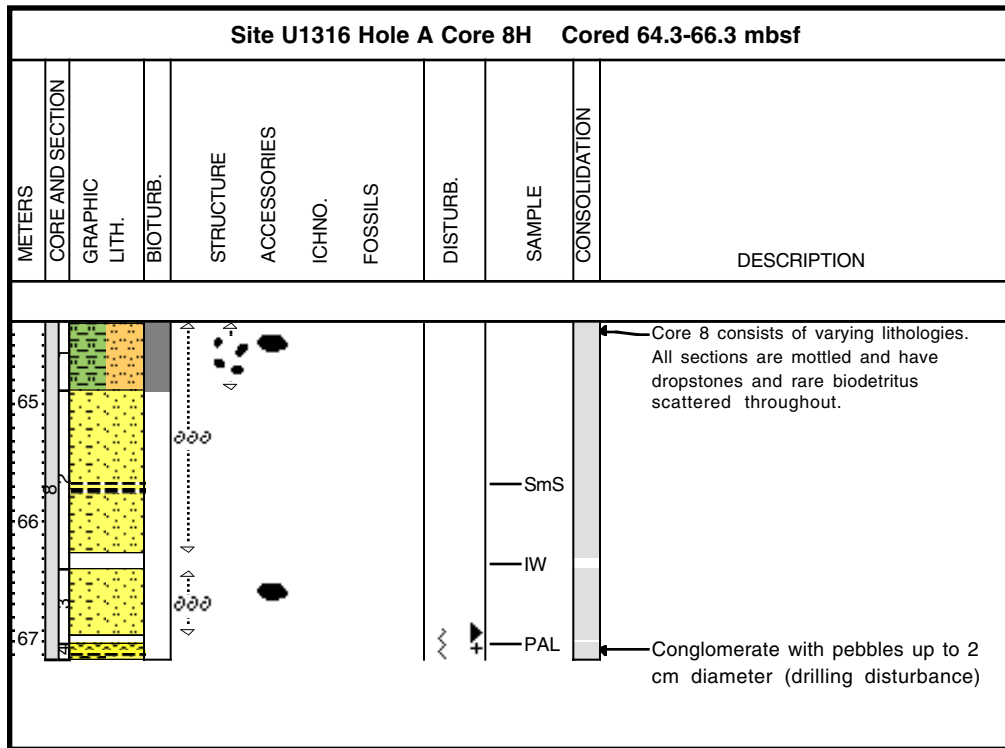
Core Photo







Core Photo

Site U1316 Hole A Core 7H Cored 54.8-64.3 mbsf											
METERS	CORE AND SECTION	GRAPHIC LITH.	BIOTURB.	STRUCTURE	ACCESSORIES	ICHNO.	FOSSILS	DISTURB.	SAMPLE	CONSOLIDATION	DESCRIPTION
55											<ul style="list-style-type: none"> <i>L. pertusa</i> rudstone with silty clay matrix; dropstones on top Major hiatus based on nanofossil, below lower Miocene, above lower Pleistocene
56									IW		
57									SmS		
58									PAL		

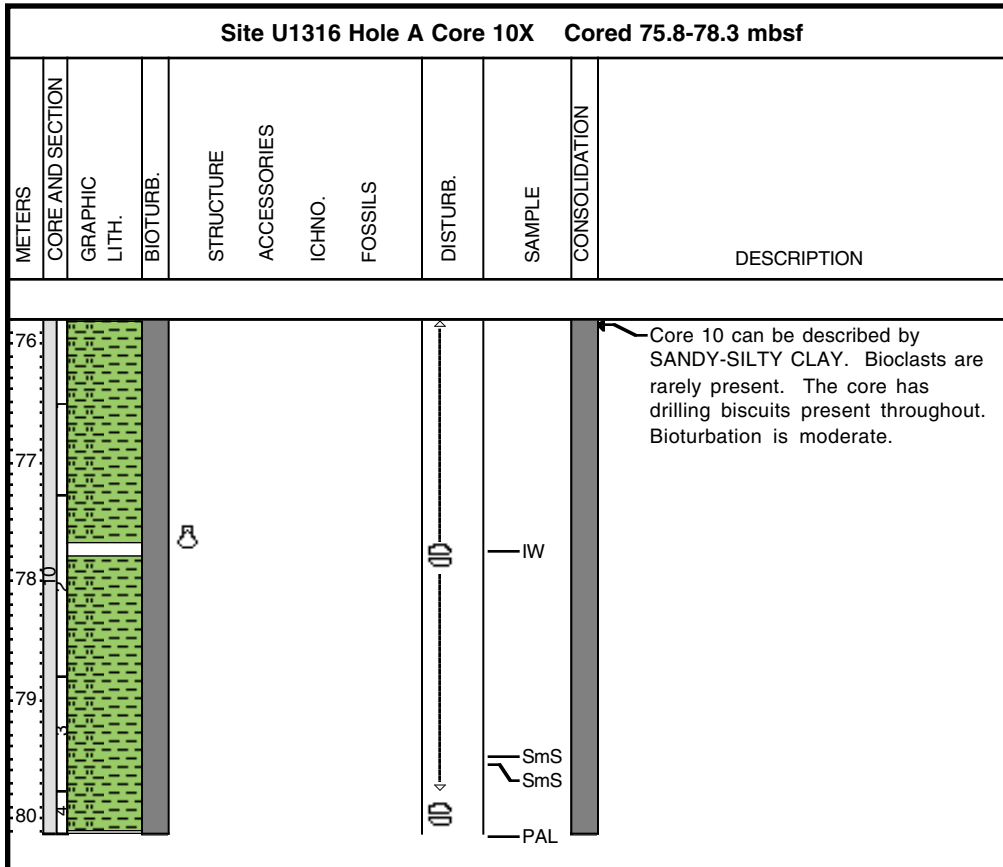
Core Photo



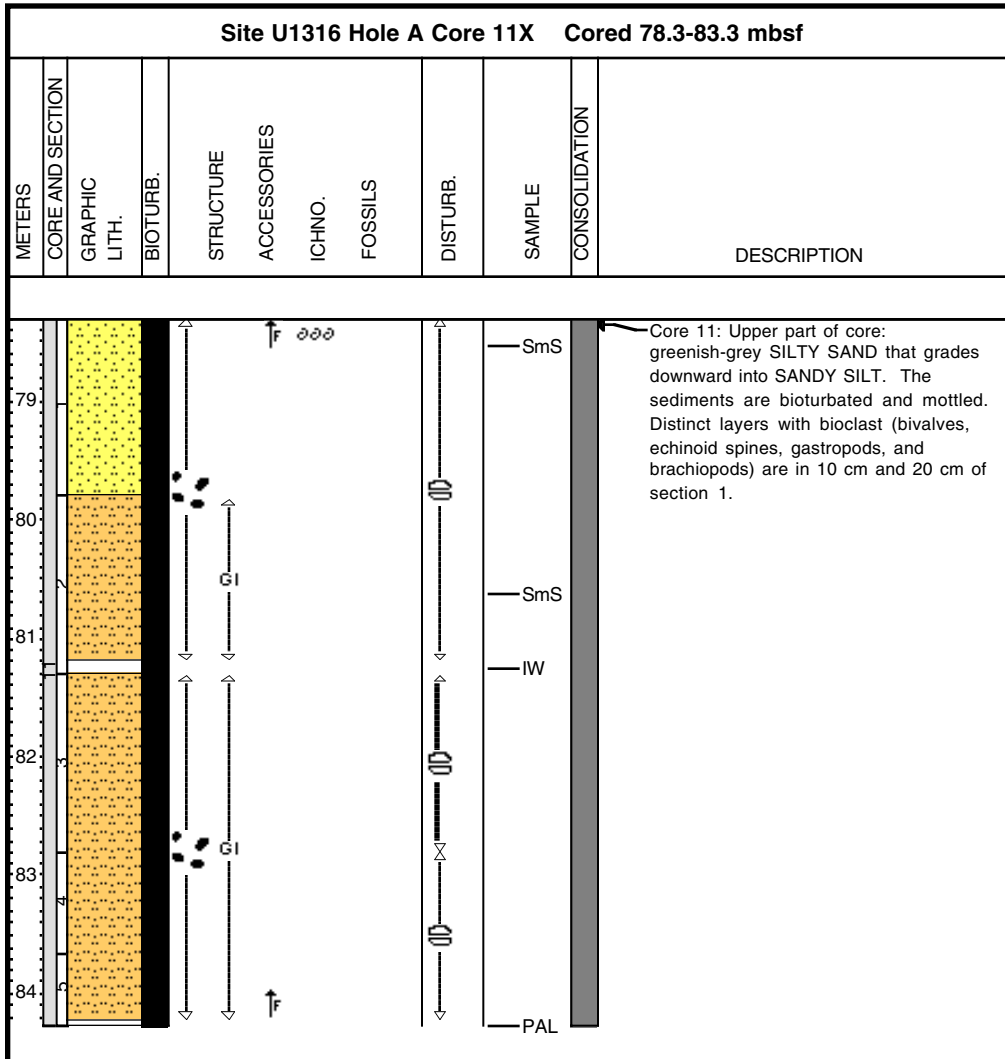
Core Photo

Site U1316 Hole A Core 9X Cored 66.3-75.8 mbsf											
METERS	CORE AND SECTION	GRAPHIC LITH.	BIOTURB.	STRUCTURE	ACCESSORIES	ICHNO.	FOSSILS	DISTURB.	SAMPLE	CONSOLIDATION	DESCRIPTION
									 SmS  PAL		

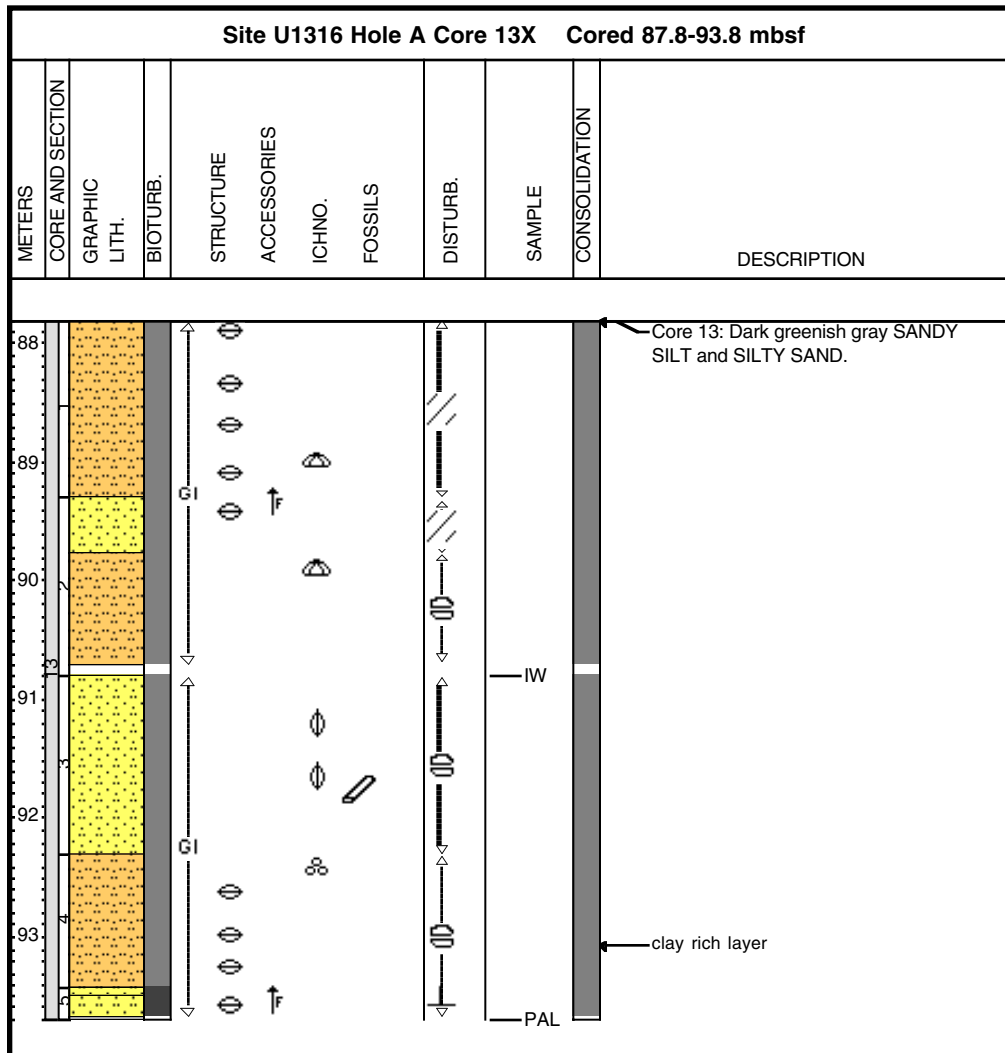
Core Photo






Core Photo



Core Photo

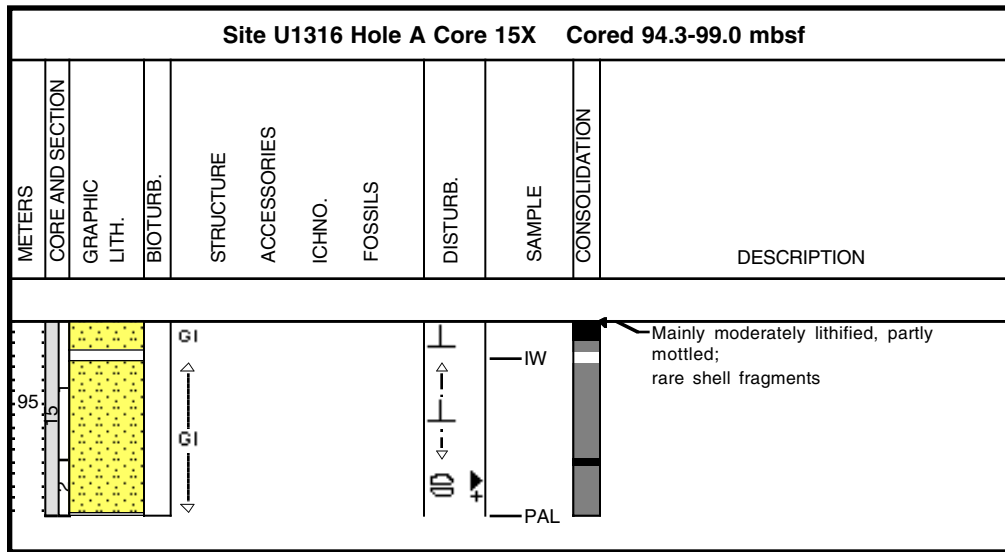


Core Photo

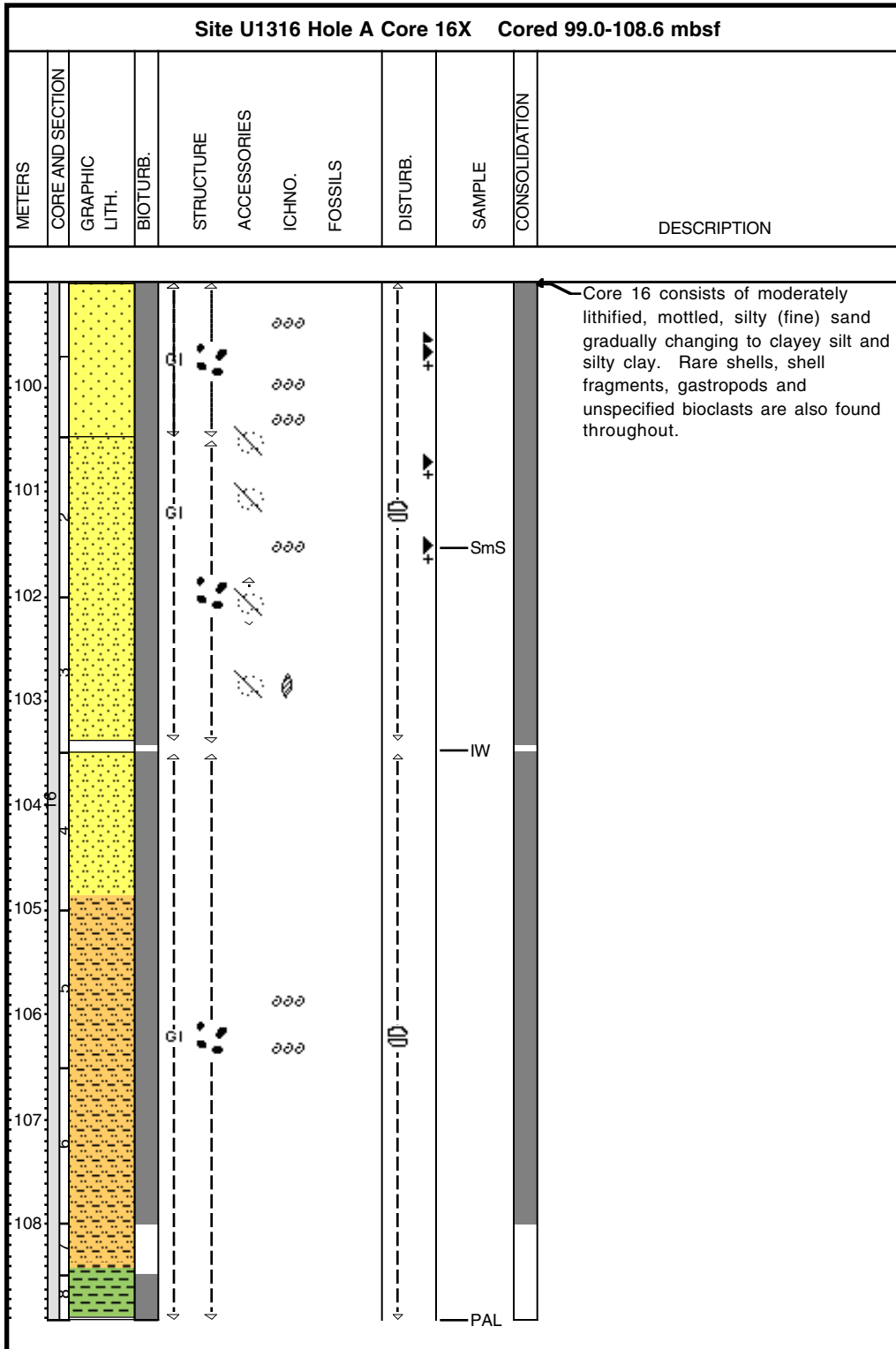
Site U1316 Hole A Core 14X Cored 93.8-94.3 mbsf											
METERS	CORE AND SECTION	GRAPHIC LITH.	BIOTURB.	STRUCTURE	ACCESSORIES	ICHNO.	FOSSILS	DISTURB.	SAMPLE	CONSOLIDATION	DESCRIPTION
94.									PAL		Moderately lithified, mottled SILTY SAND, rare shell fragments, 1 coral fragment



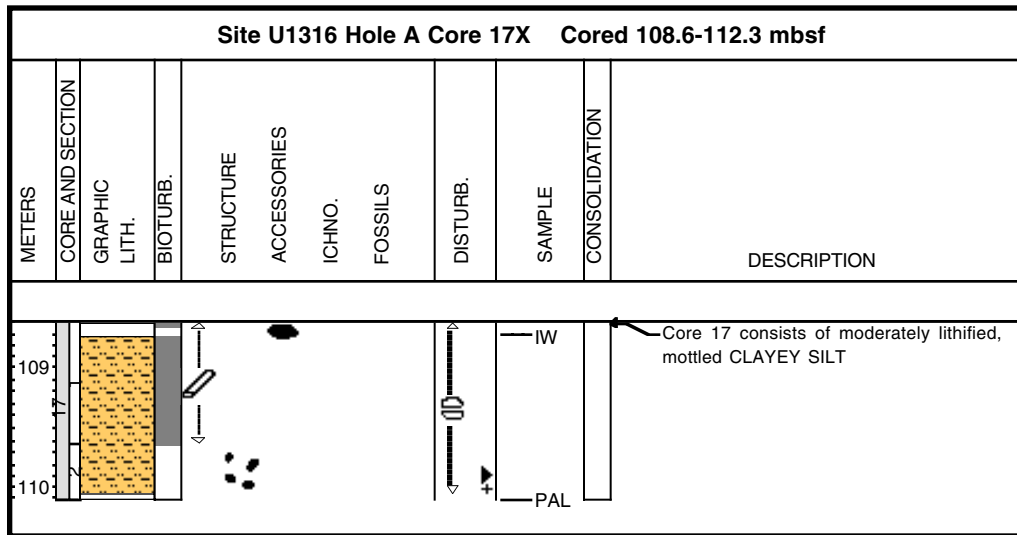
Core Photo



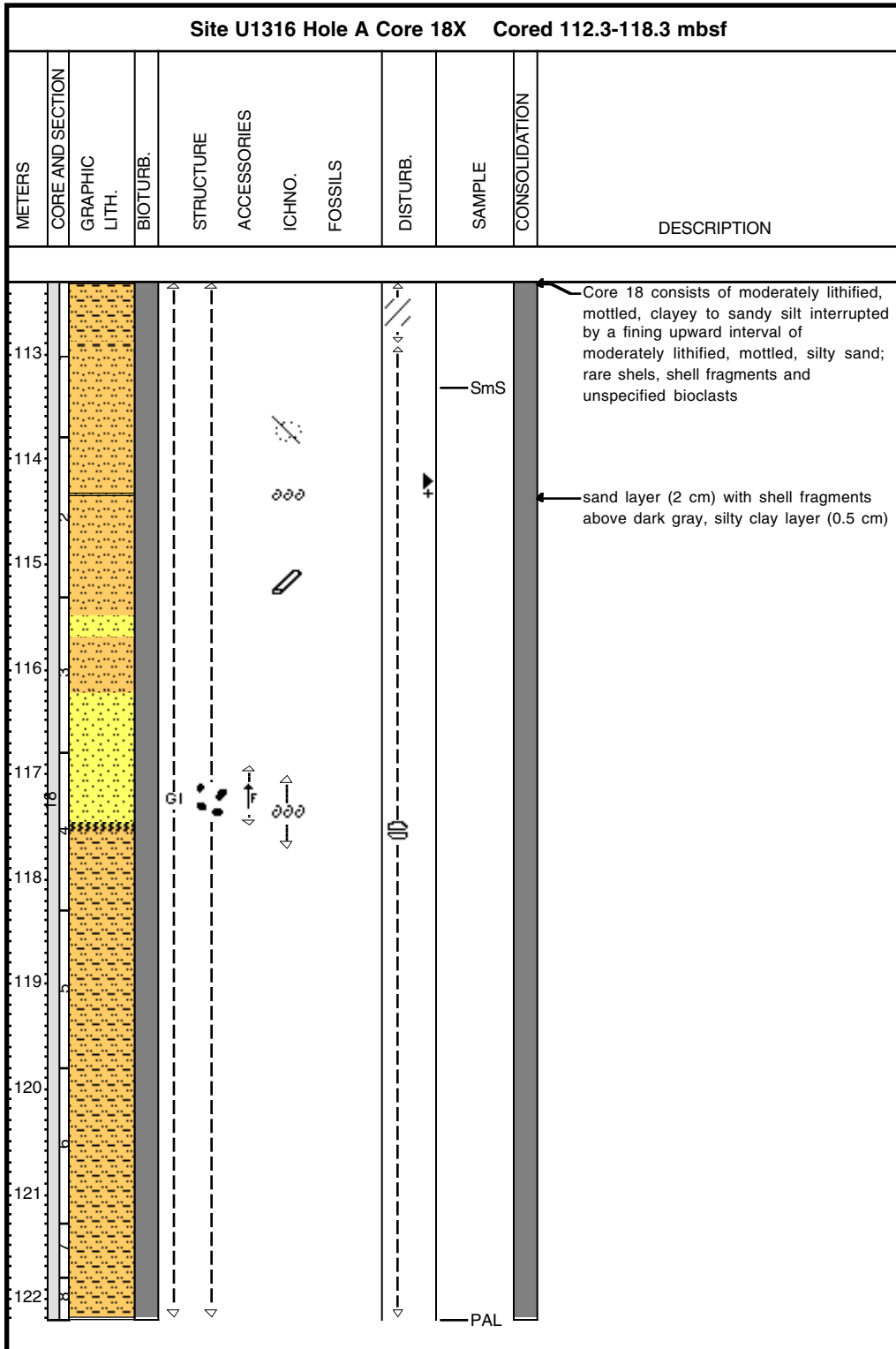
Core Photo



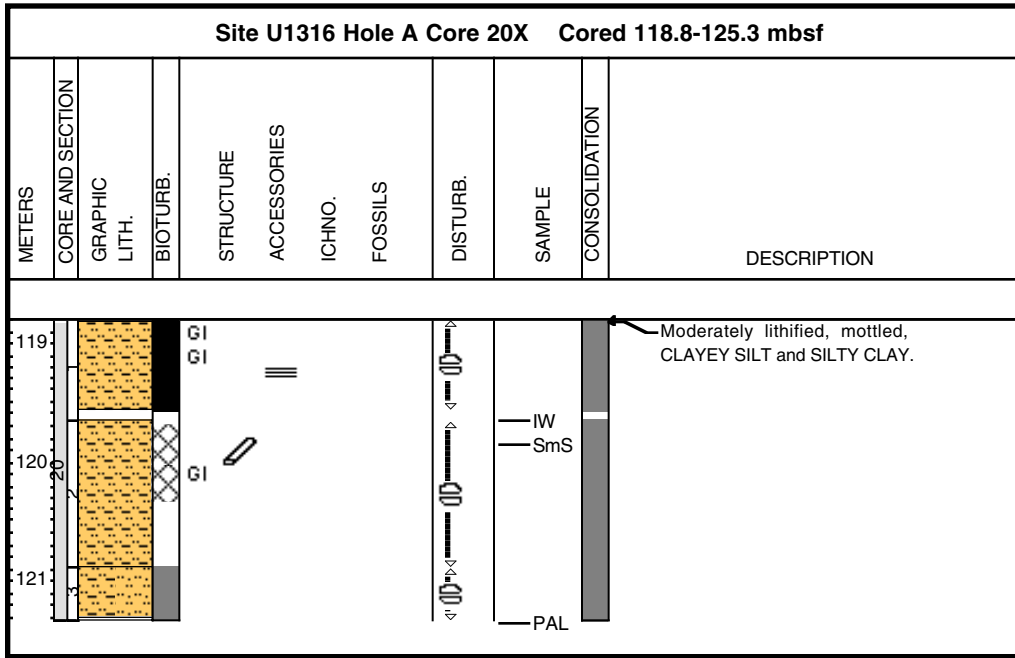
Core Photo

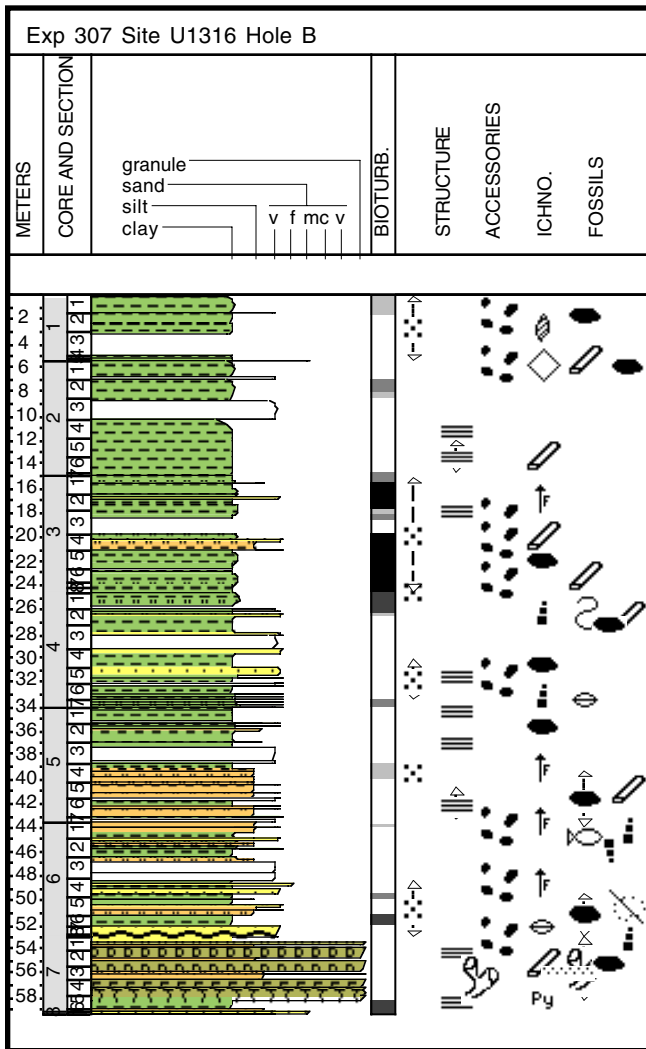


Core Photo

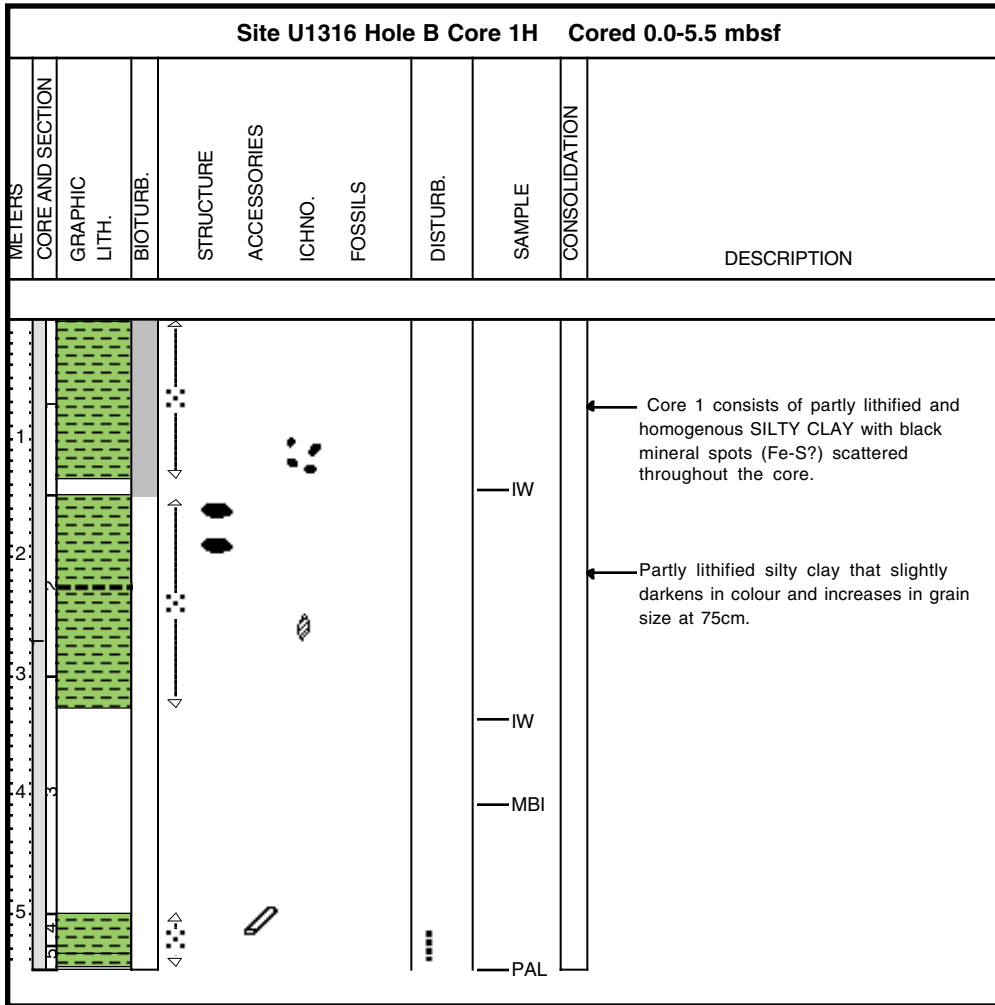


Core Photo

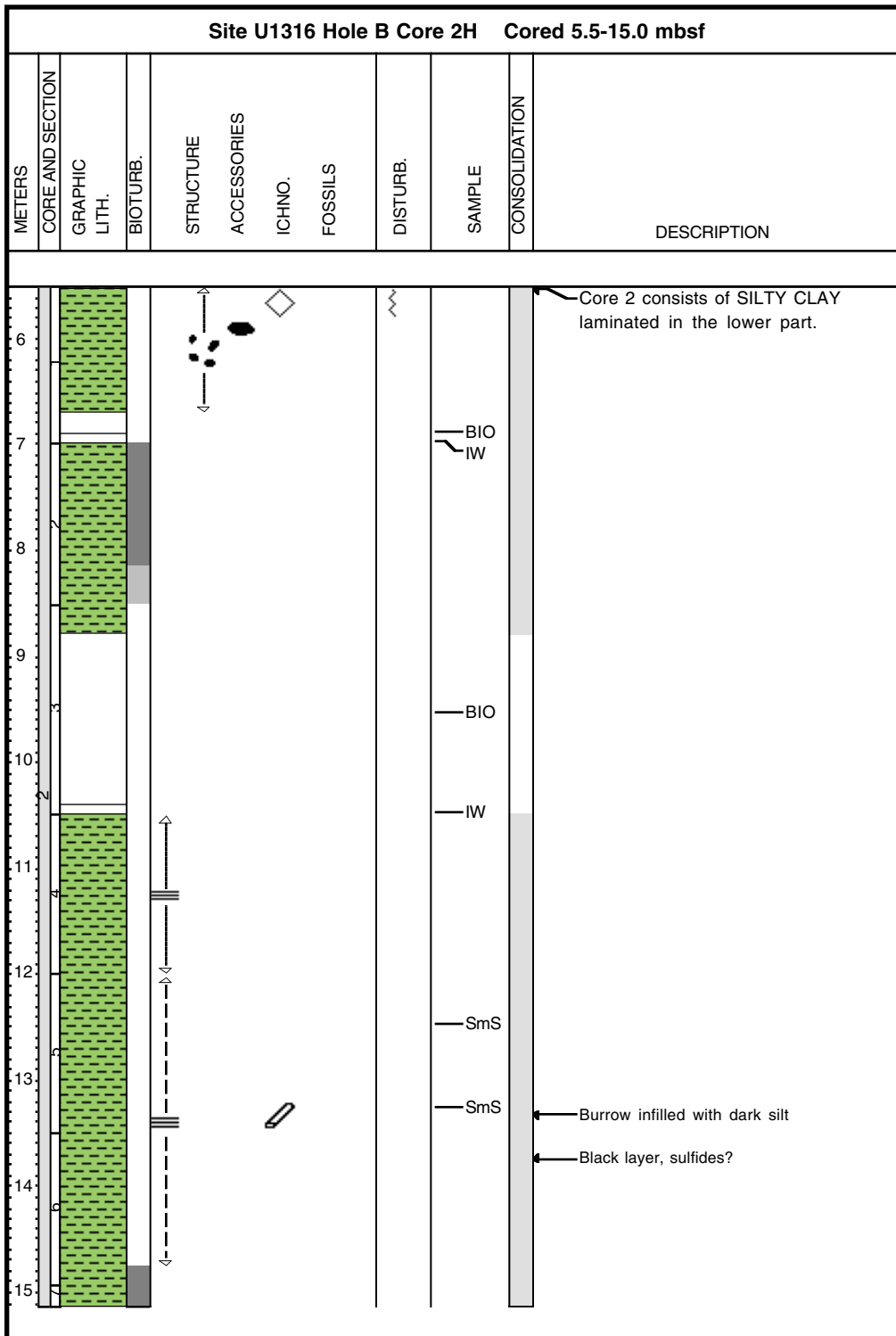




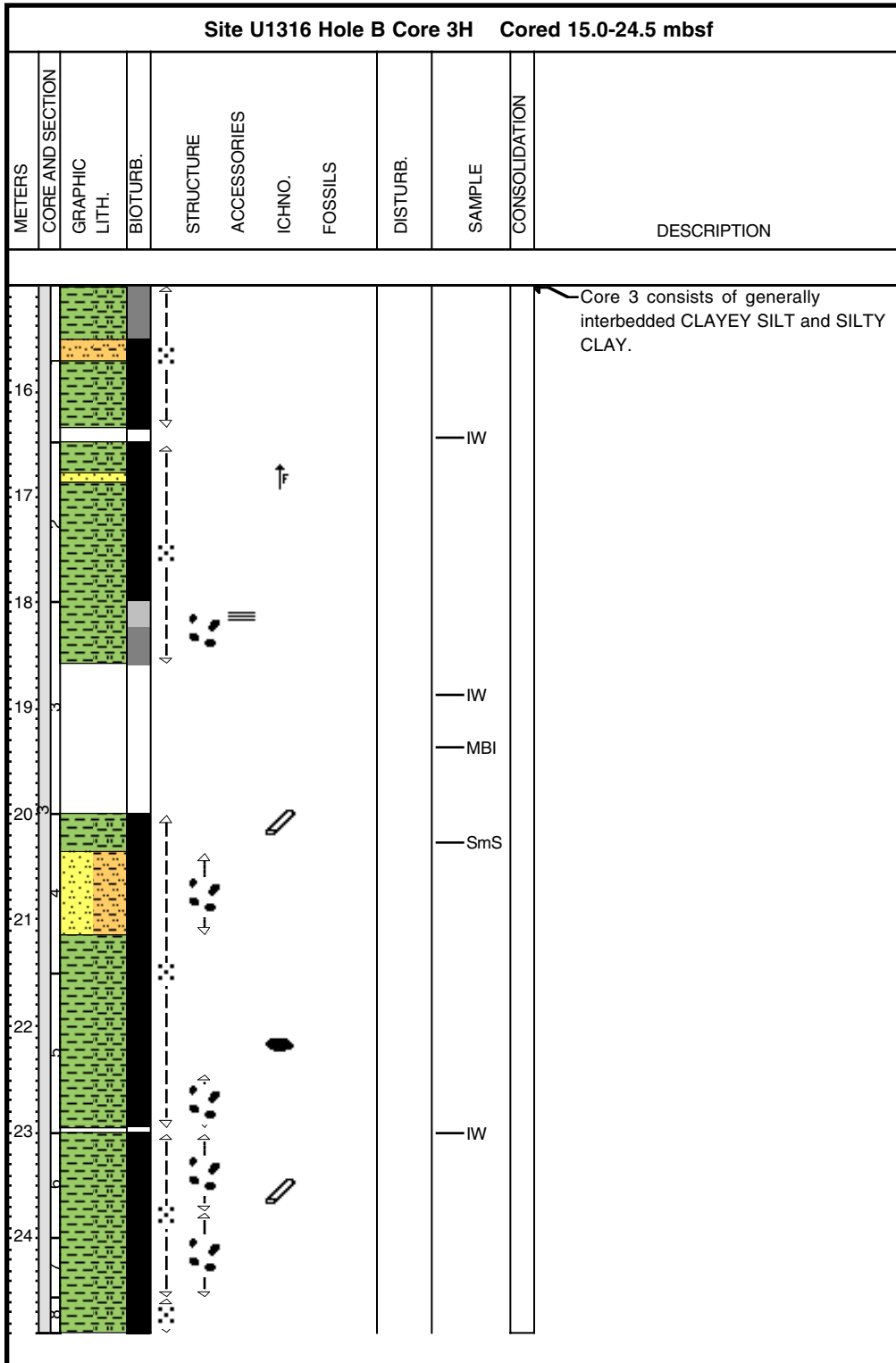
Core Photo



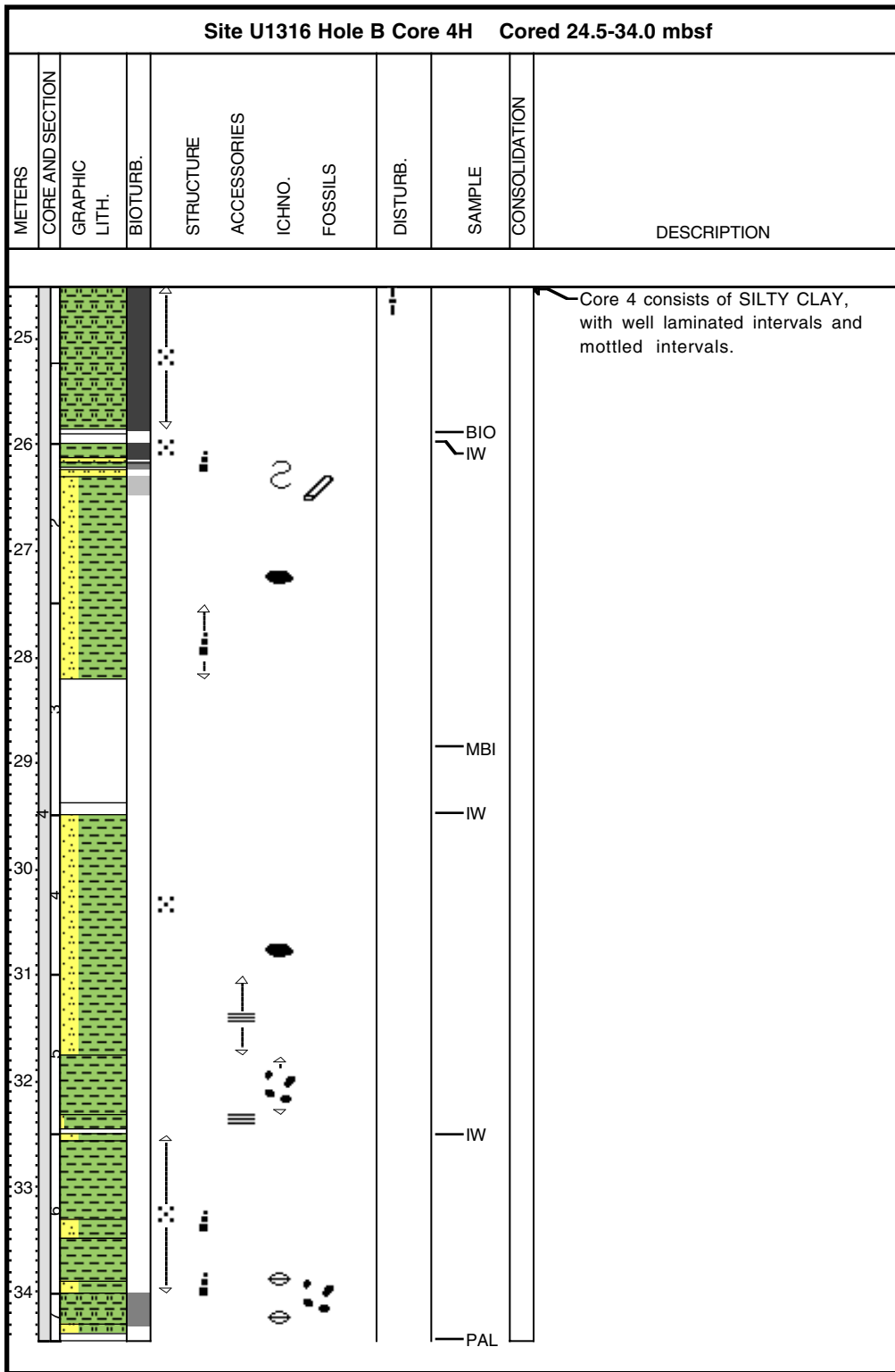
Core Photo



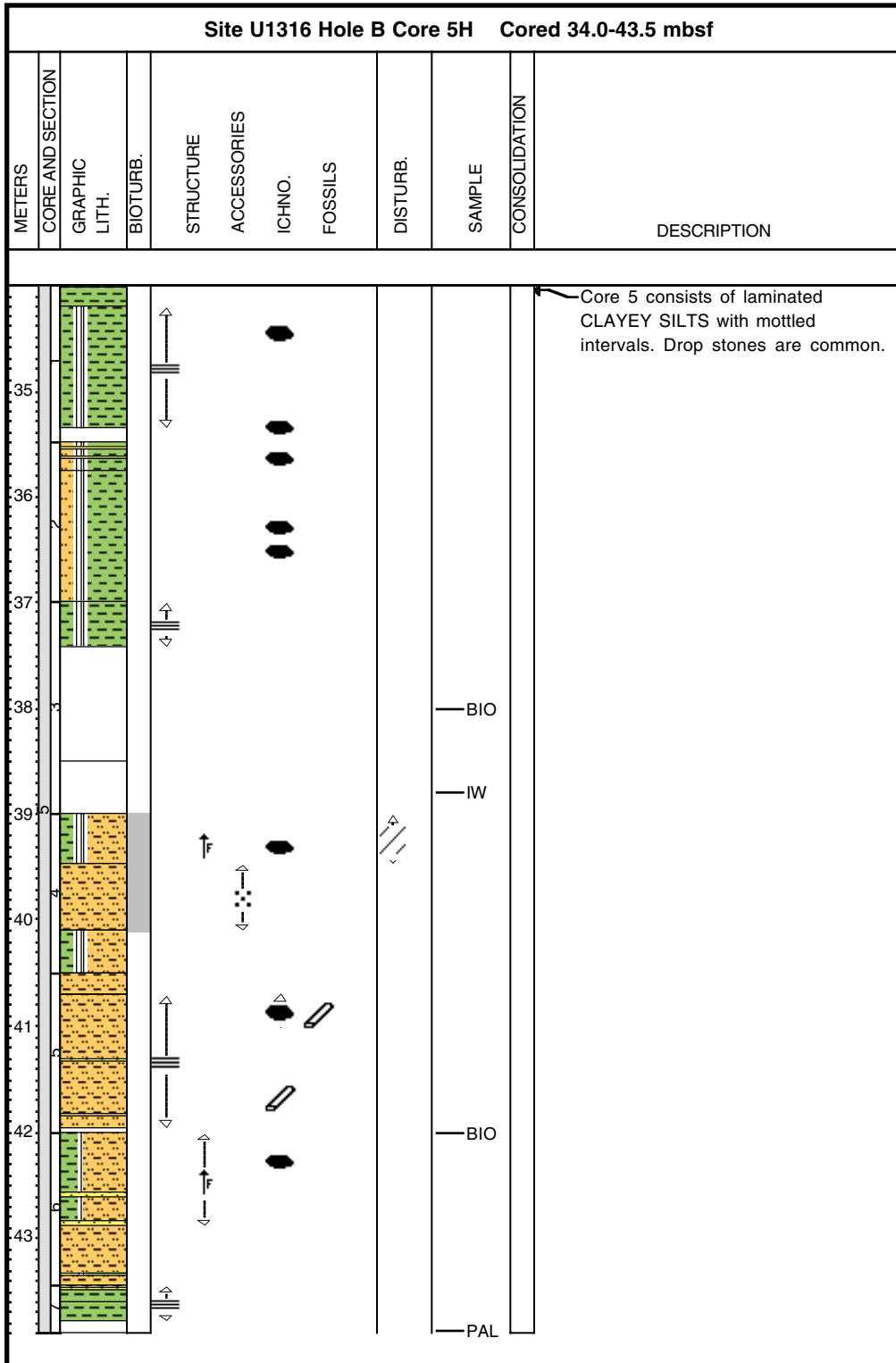
Core Photo



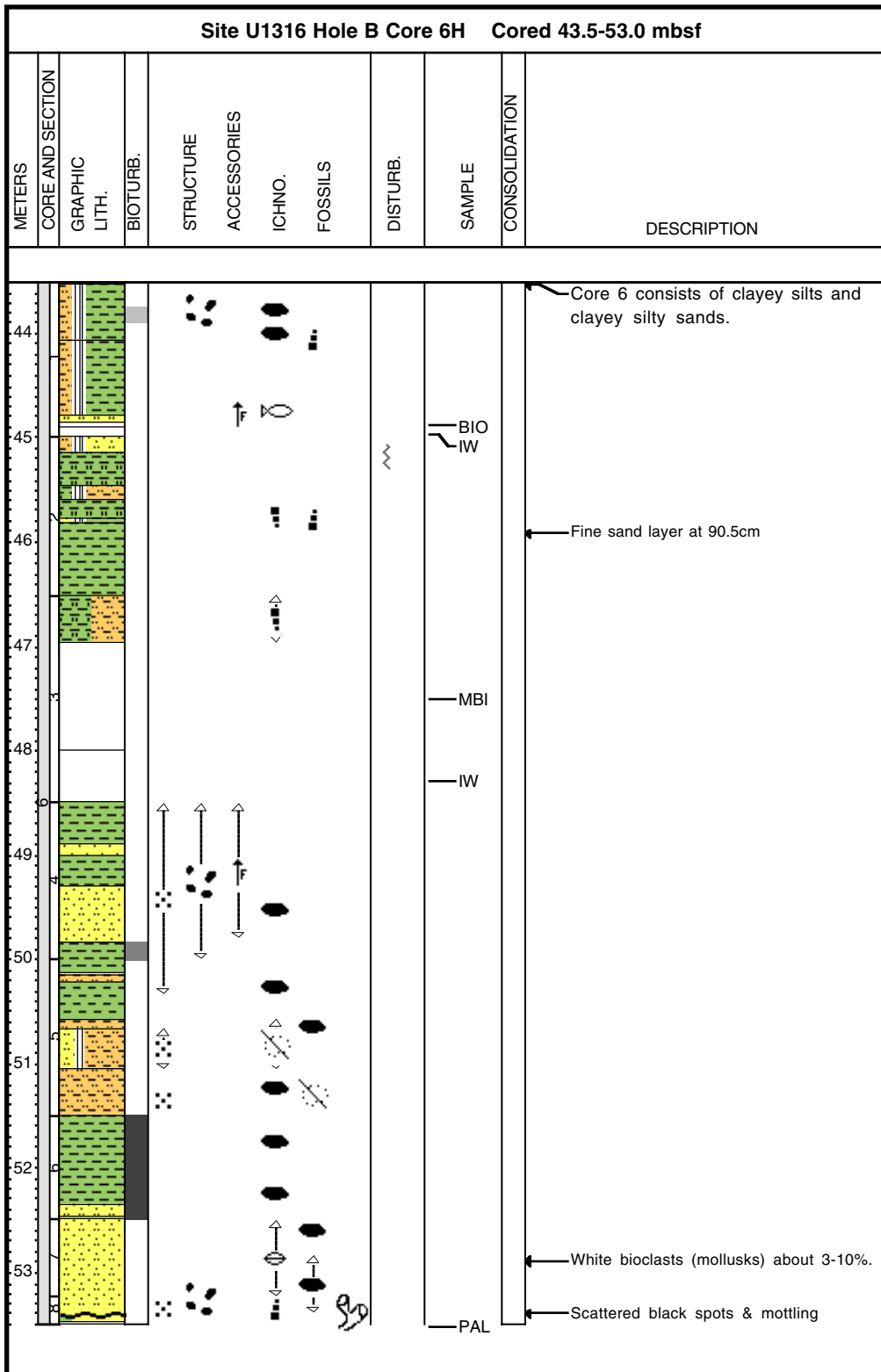
Core Photo



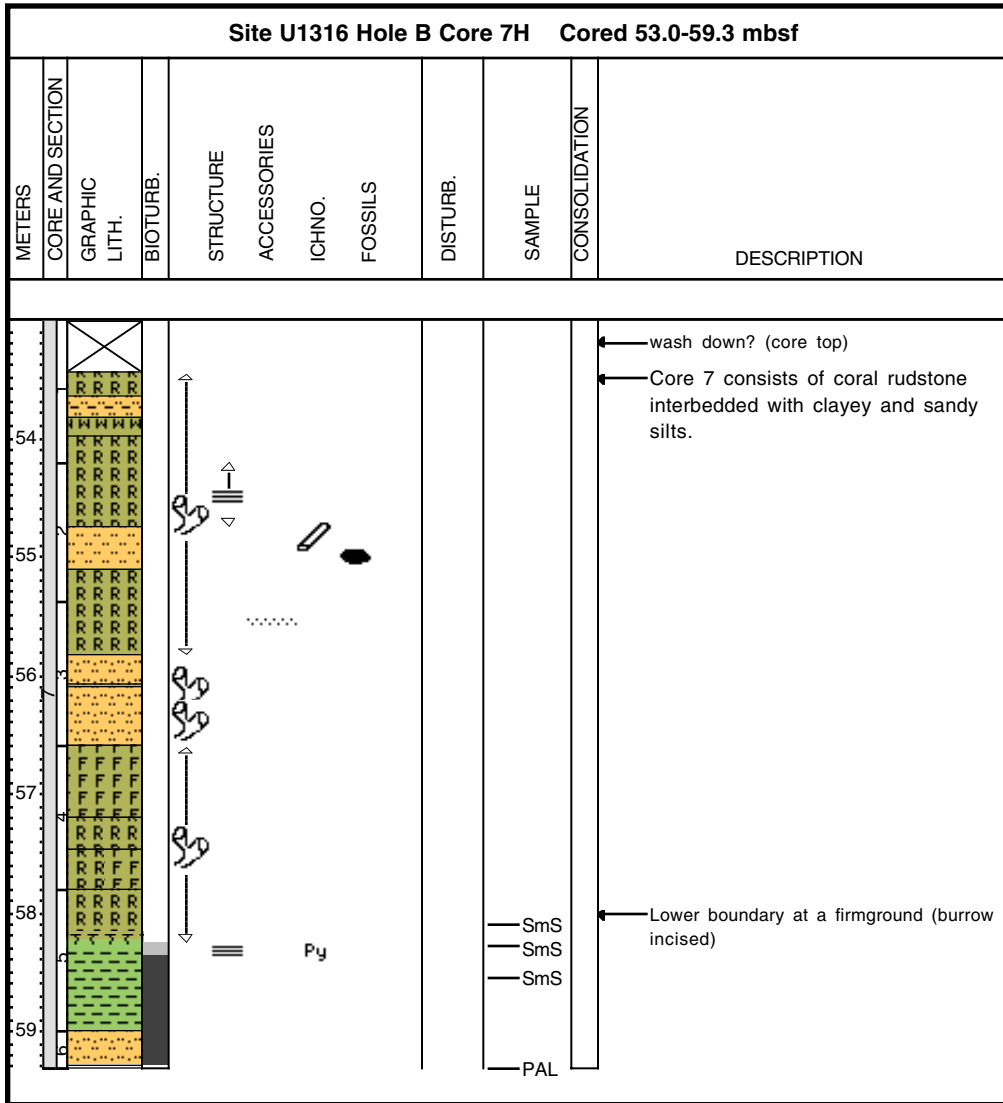
Core Photo




Core Photo



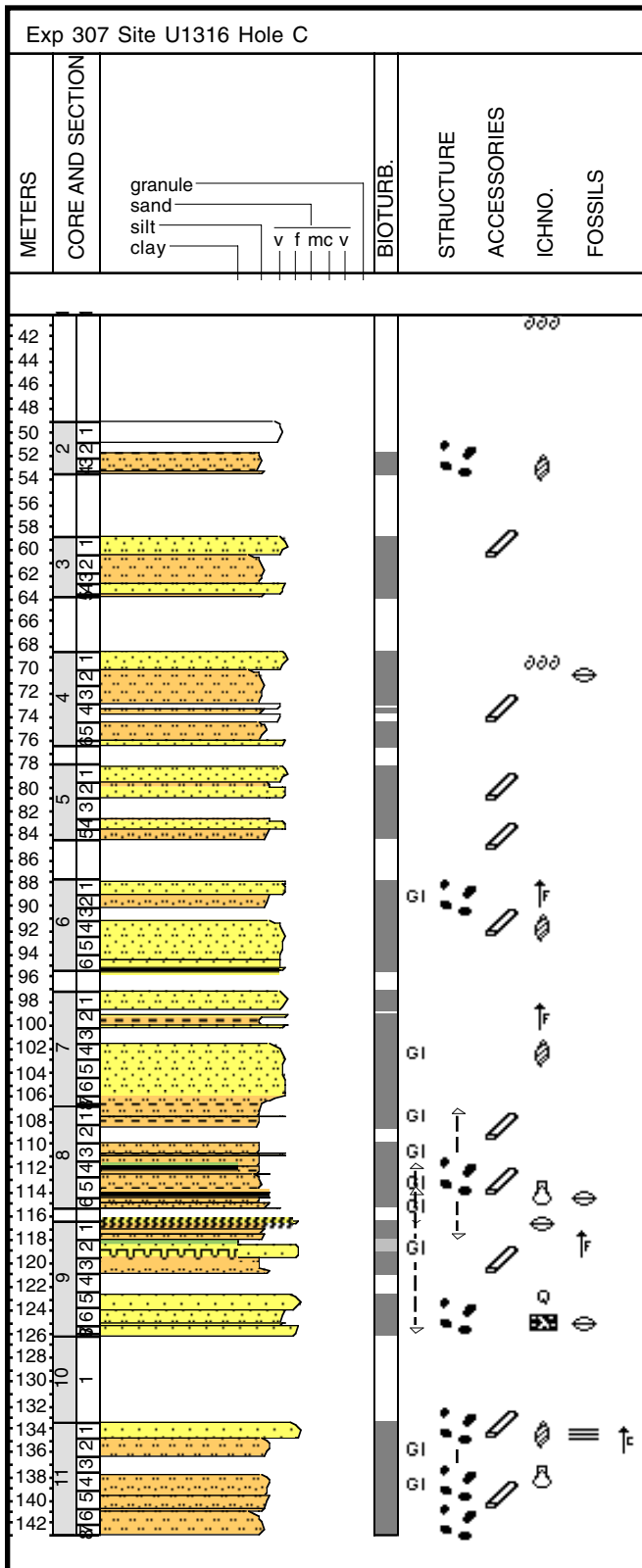
Core Photo




Core Photo

Site U1316 Hole B Core 8H Cored 59.3-59.5 mbsf							
METERS	CORE AND SECTION	GRAPHIC LITH.	BIOTURB.	STRUCTURE ACCESSORIES ICHNO. FOSSILS	DISTURB.	SAMPLE	CONSOLIDATION
							DESCRIPTION
							
						PAL	





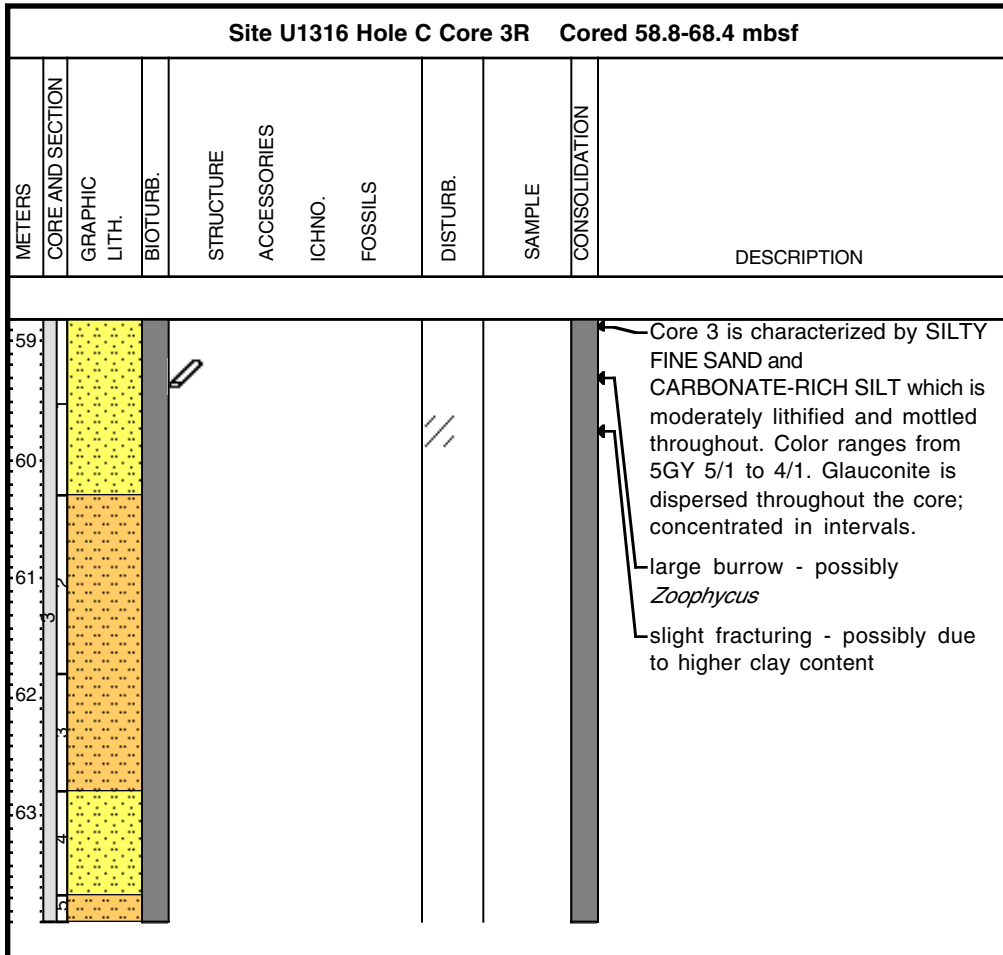
Core Photo

Site U1316 Hole C Core 1R Cored 40.0-49.2 mbsf											
METERS	CORE AND SECTION	GRAPHIC LITH.	BIOTURB.	STRUCTURE	ACCESSORIES	ICHNO.	FOSSILS	DISTURB.	SAMPLE	CONSOLIDATION	DESCRIPTION
											Core 1: one small section of silty clay: 5Y 4/1 in color and few shell fragments.

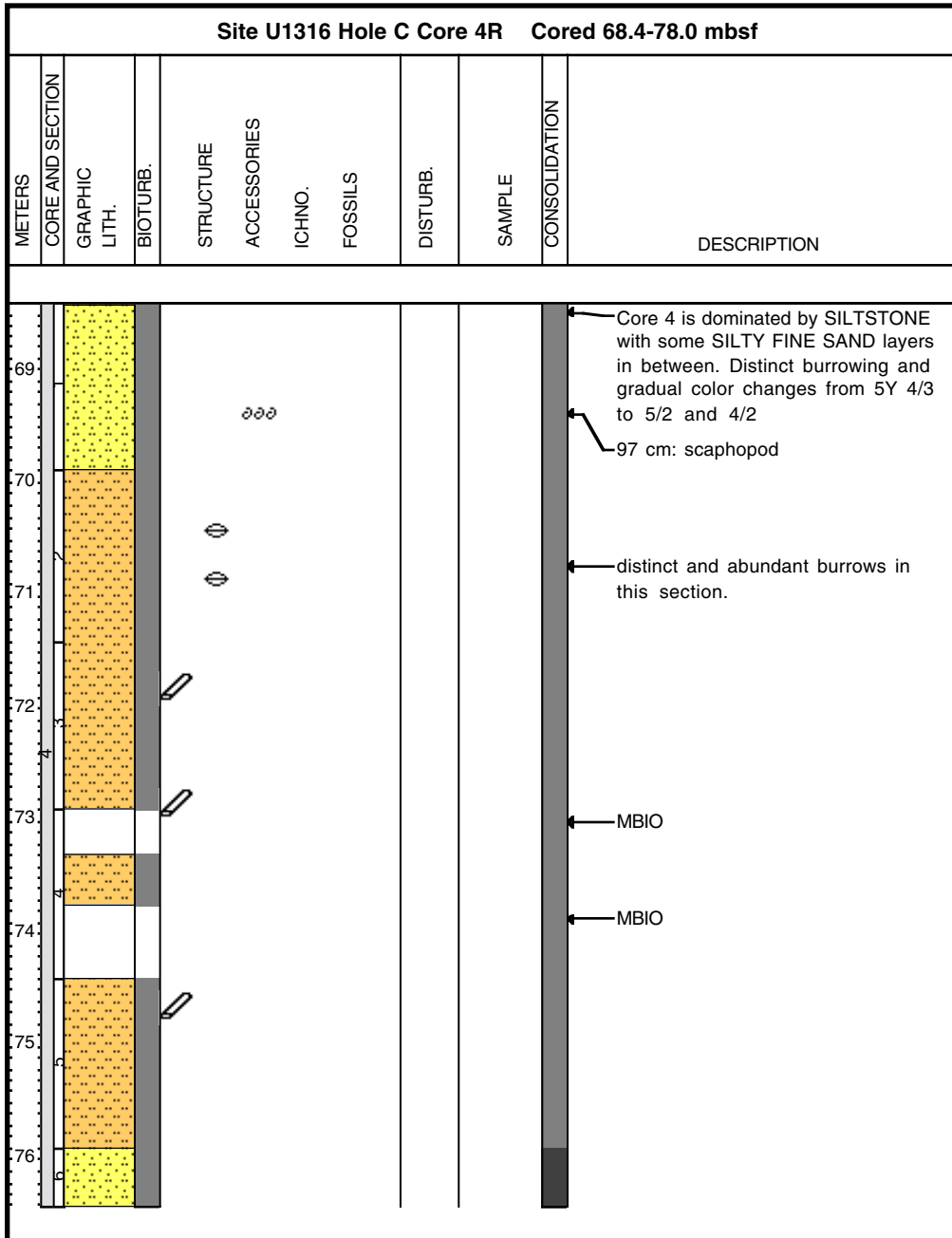
Core Photo

Site U1316 Hole C Core 2R Cored 49.2-58.8 mbsf											
METERS	CORE AND SECTION	GRAPHIC LITH.	BIOTURB.	STRUCTURE	ACCESSORIES	ICHNO.	FOSSILS	DISTURB.	SAMPLE	CONSOLIDATION	DESCRIPTION
50											<p>Core 2: ~2.4 m of drill disturbance at top - most likely sediment washed down during RCB. Mound boundary? just below the drill disturbance? Lithology dominated by CLAYEY SILTSTONE.</p> <p>section 1 and 2 up to 90 cm: drill disturbance. At 70 cm erosive boundary and from 70-90 black part filled with sediment from above.</p> <p>distint color change just below end of disturbed section -> possible mound base boundary.</p>
51											
52											
53											

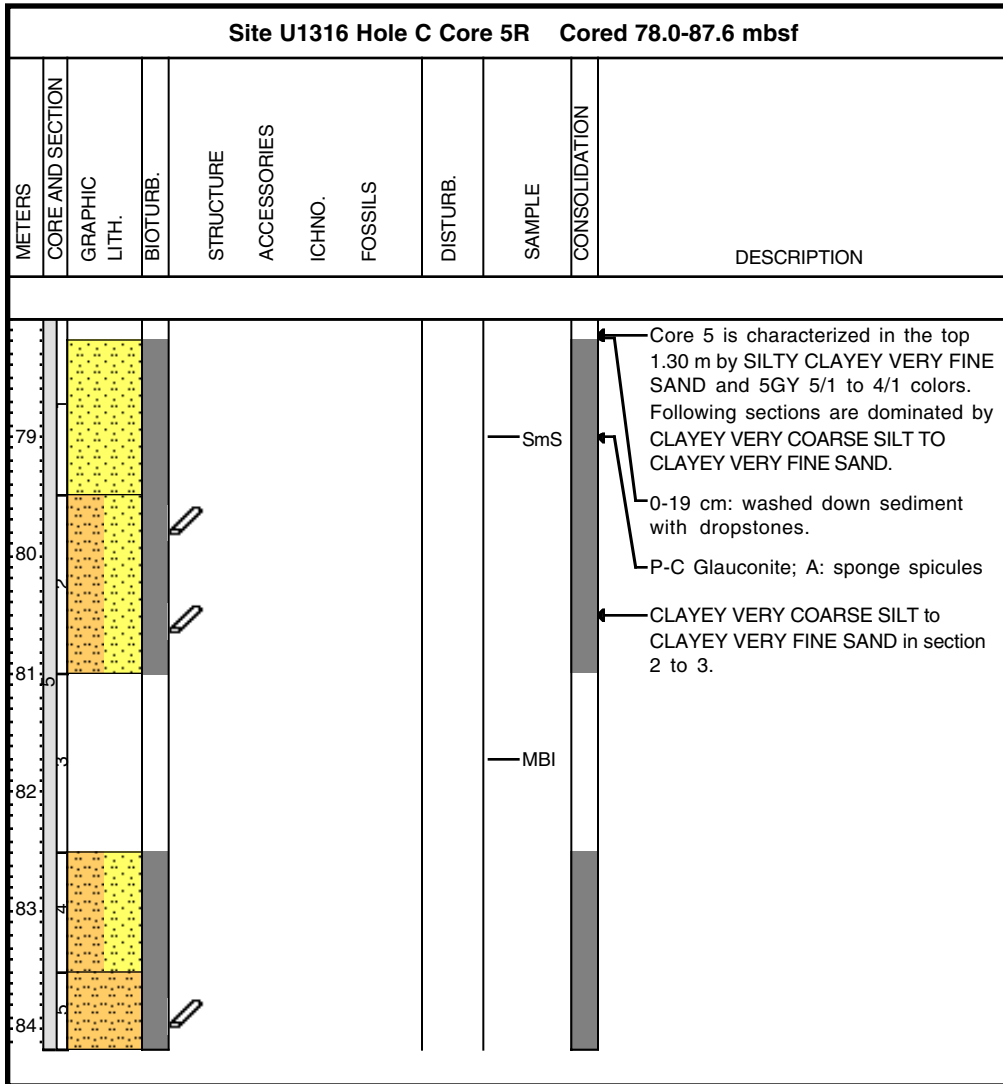
Core Photo



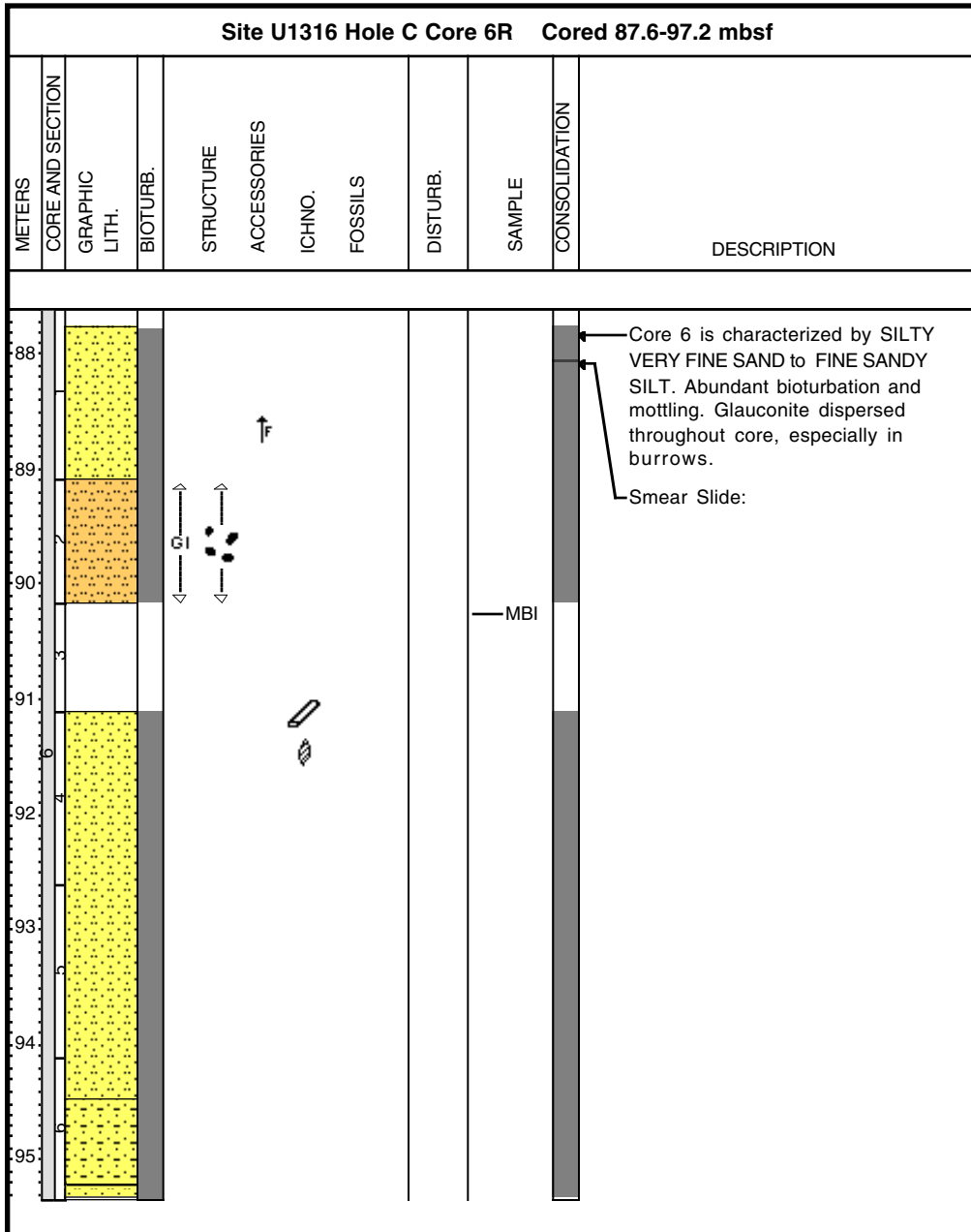
Core Photo



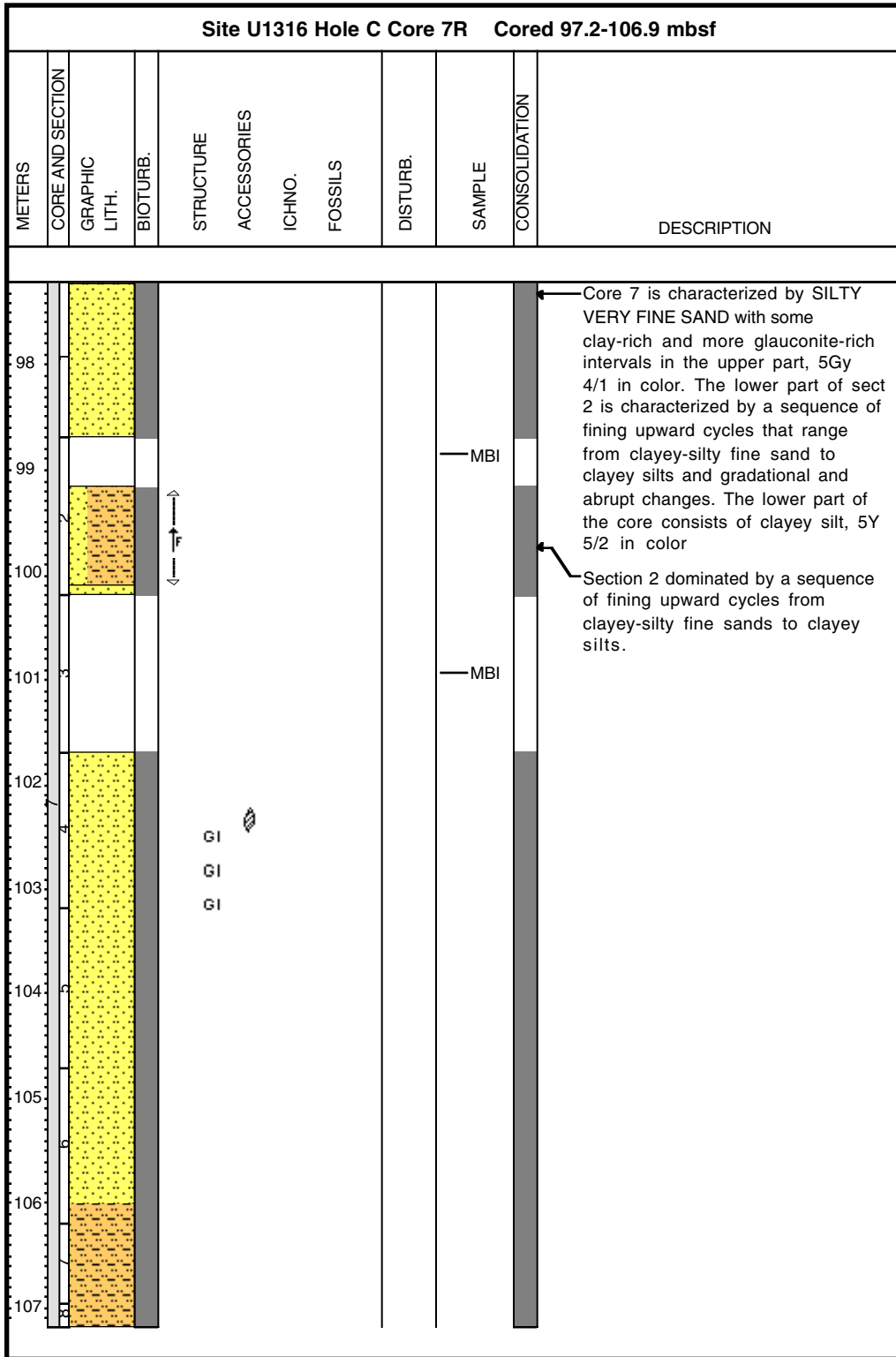
Core Photo



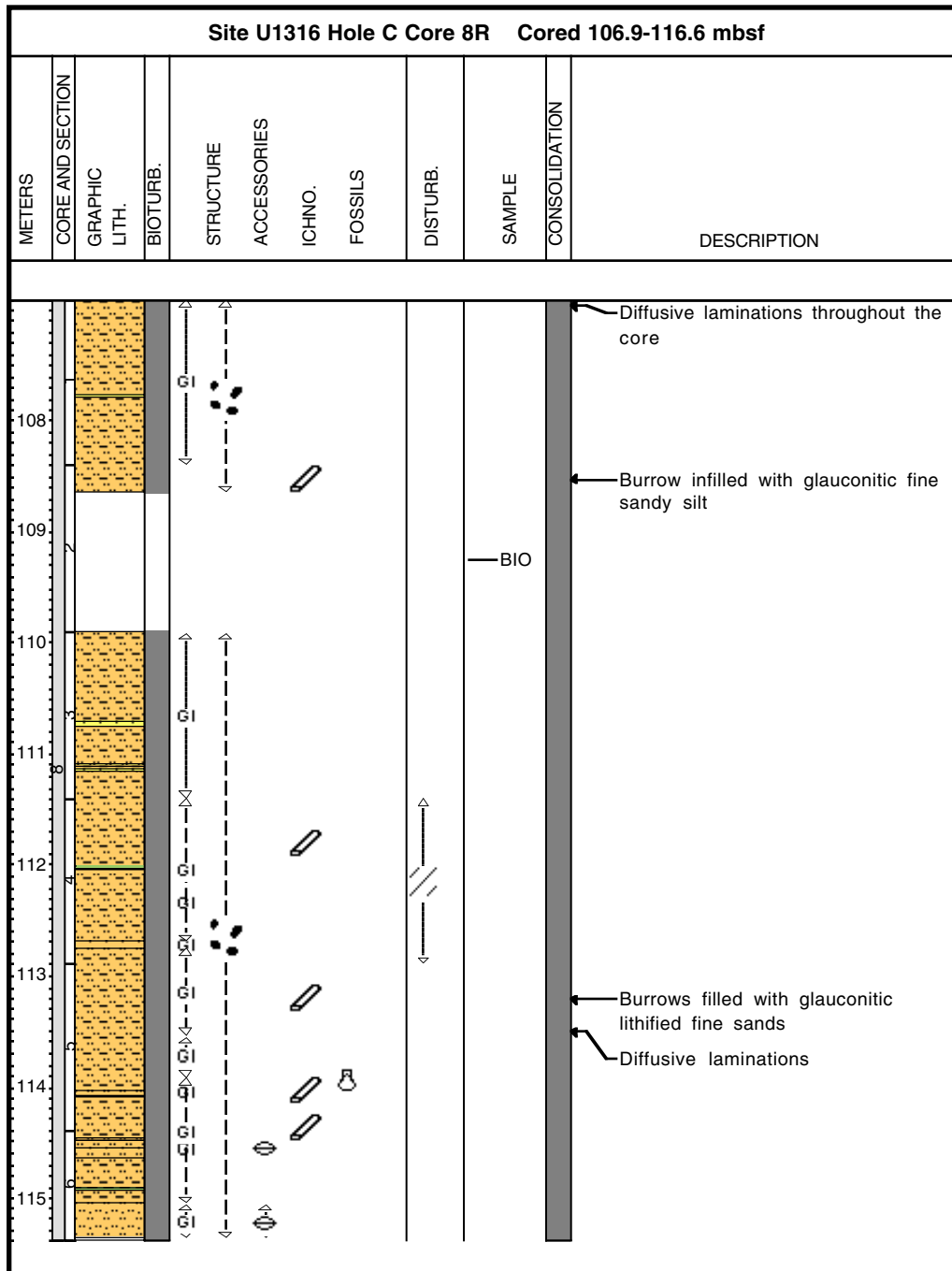
Core Photo



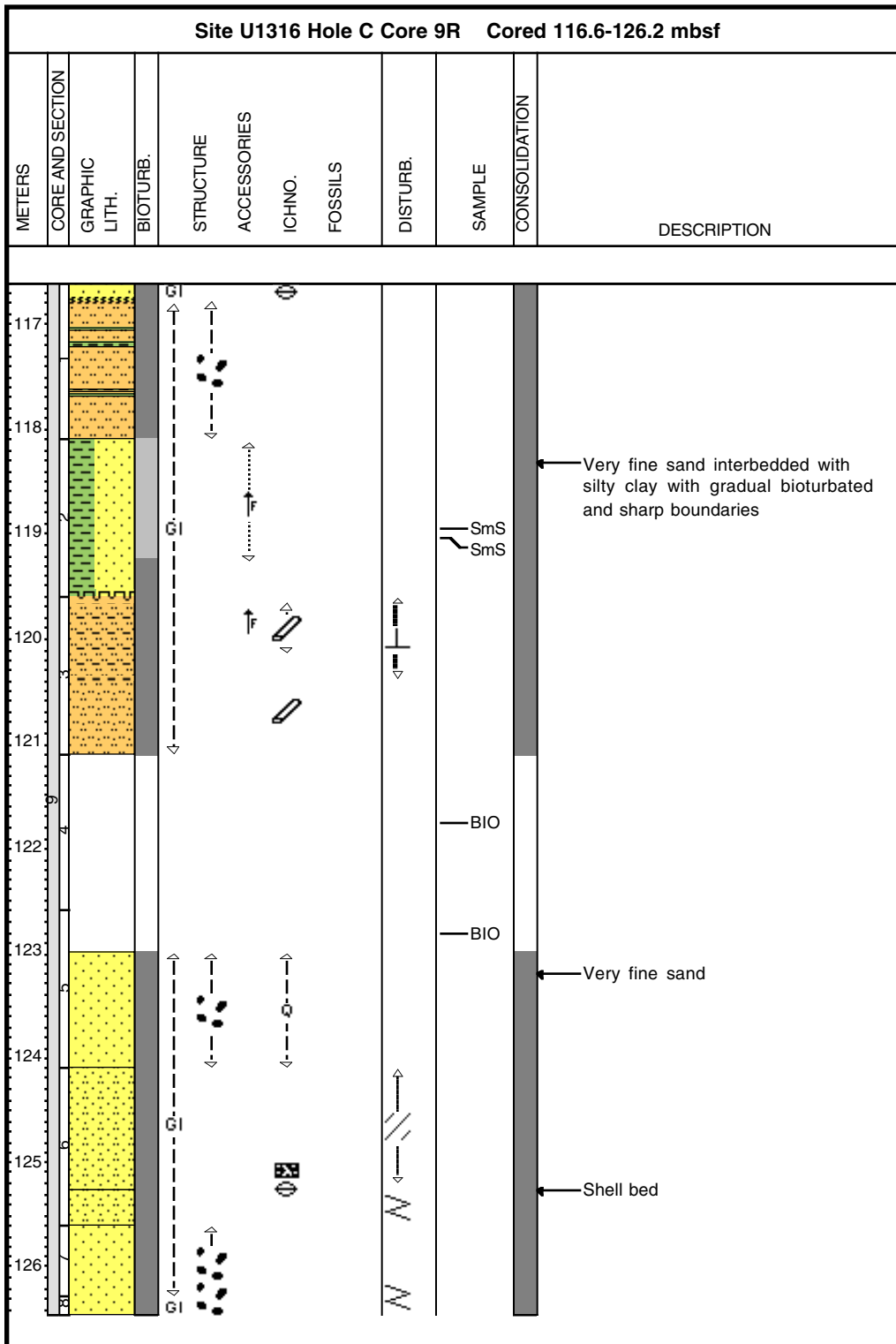
Core Photo



Core Photo



Core Photo



U1316C-10R No recovery



Core Photo

