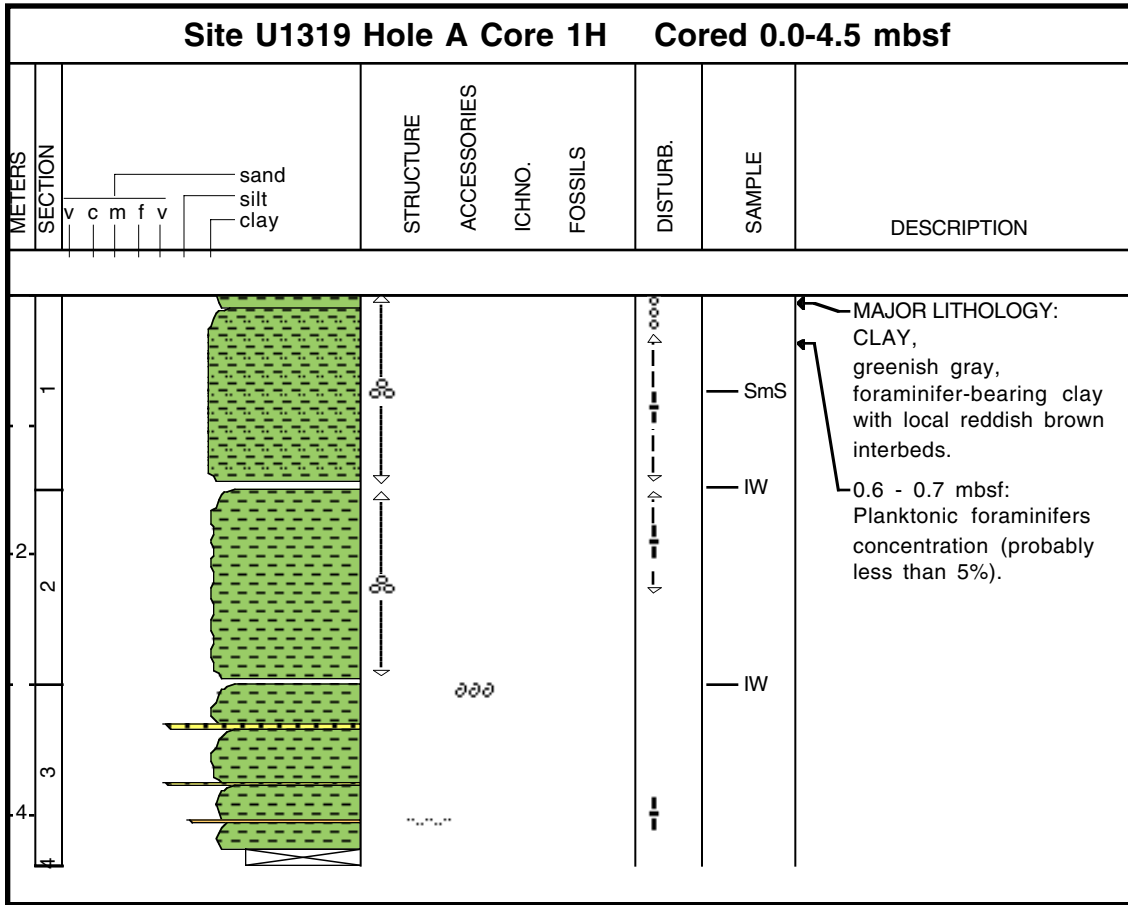
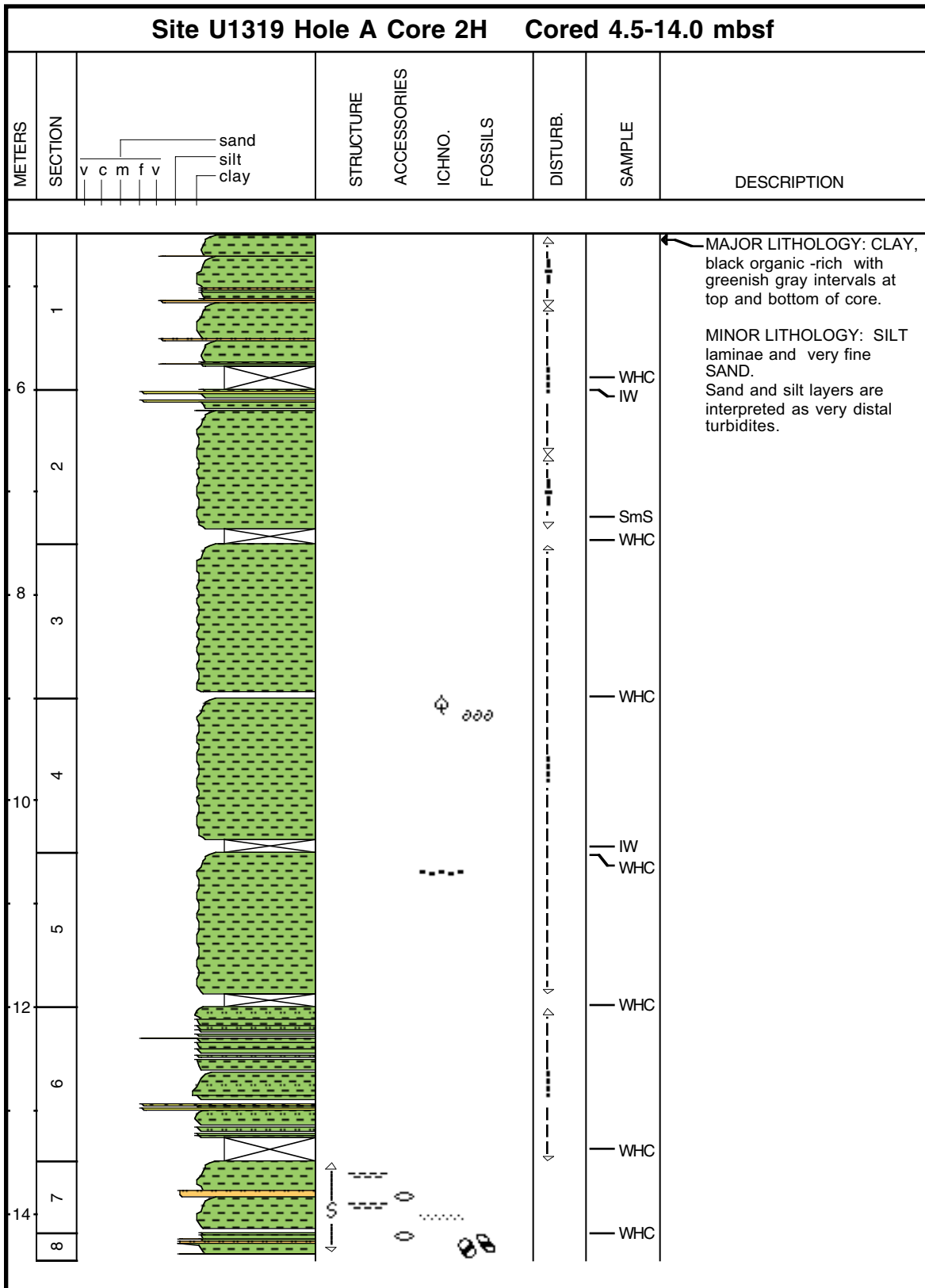


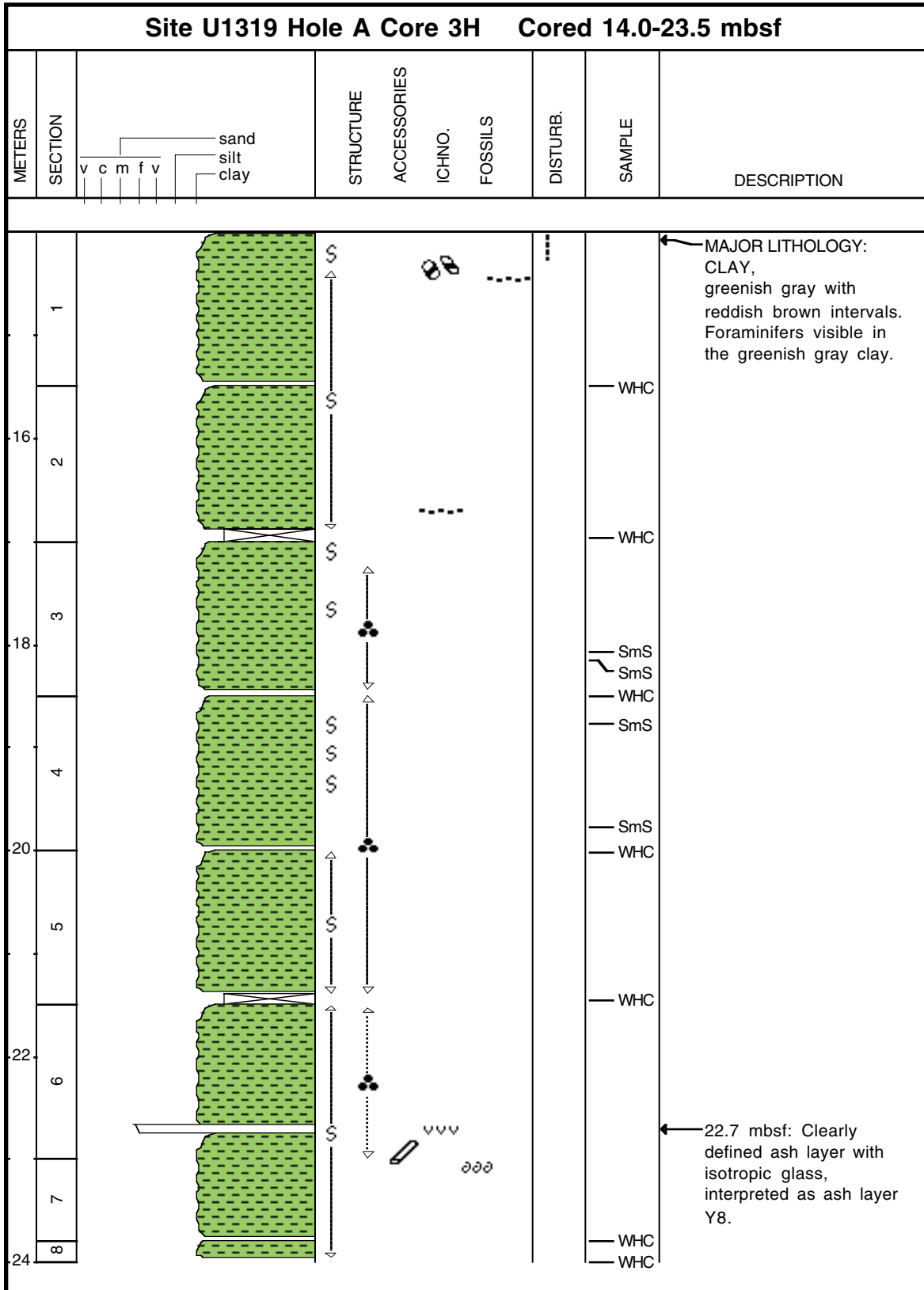
Core Photo



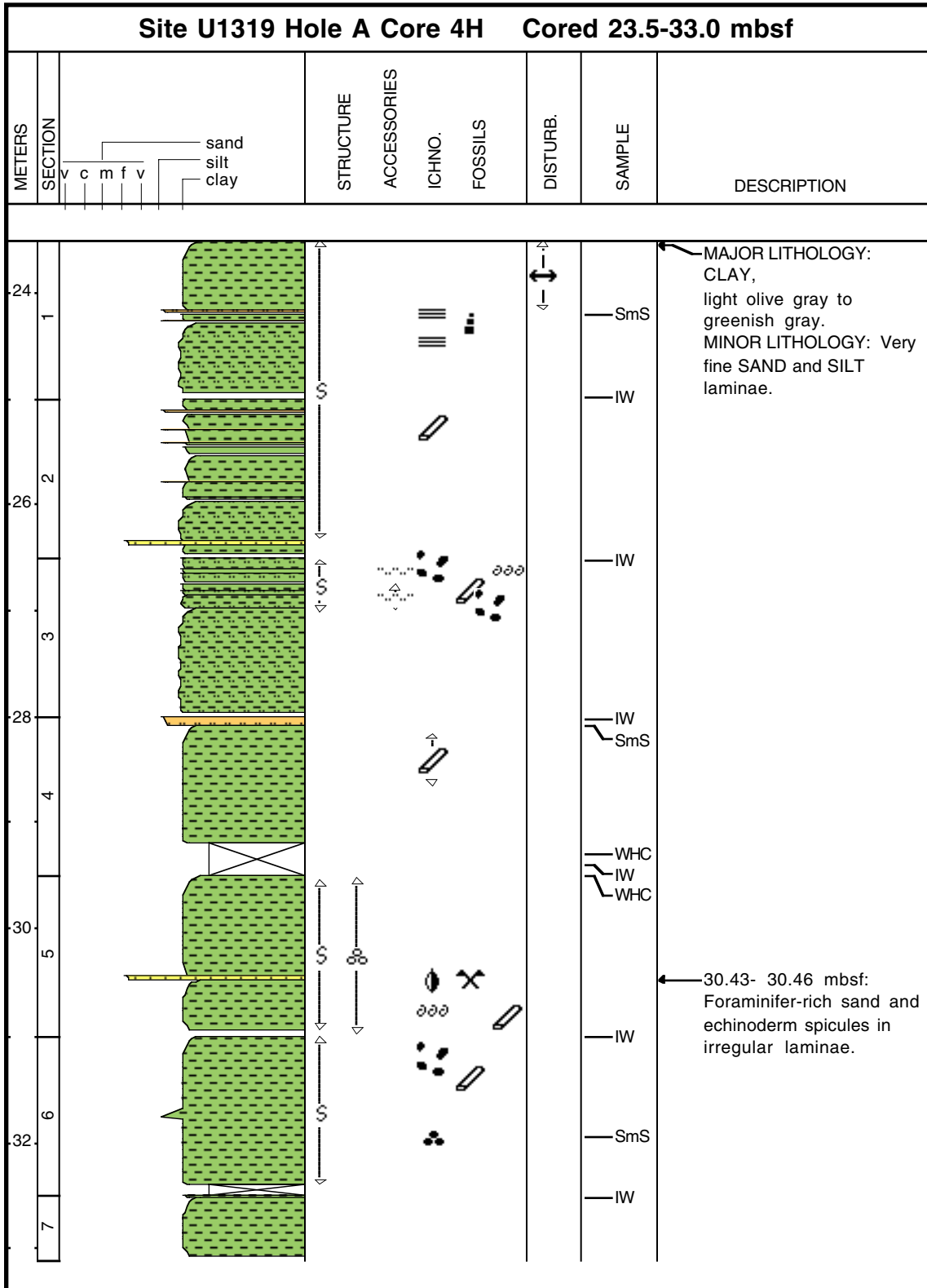
Core Photo



Core Photo



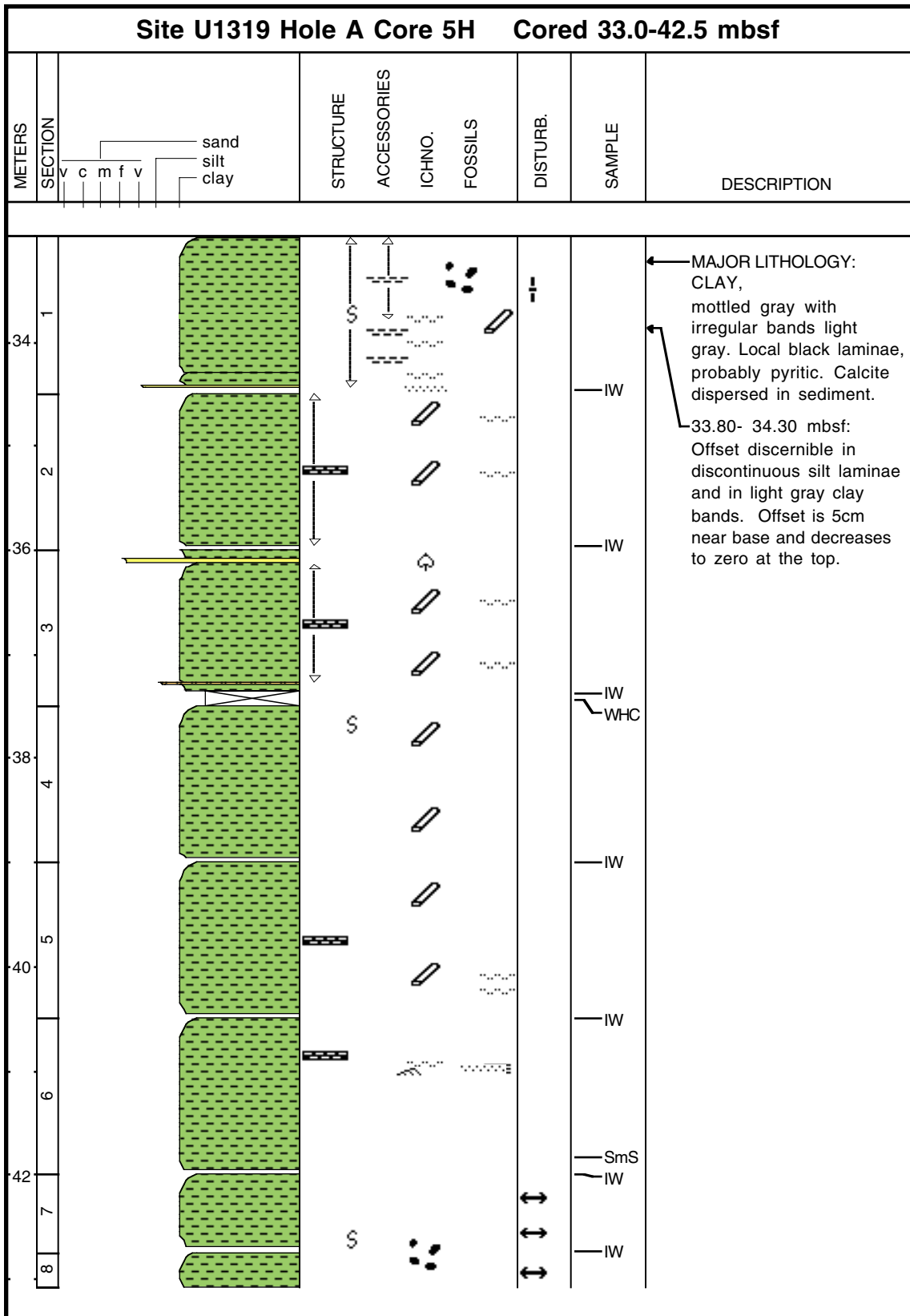
Core Photo



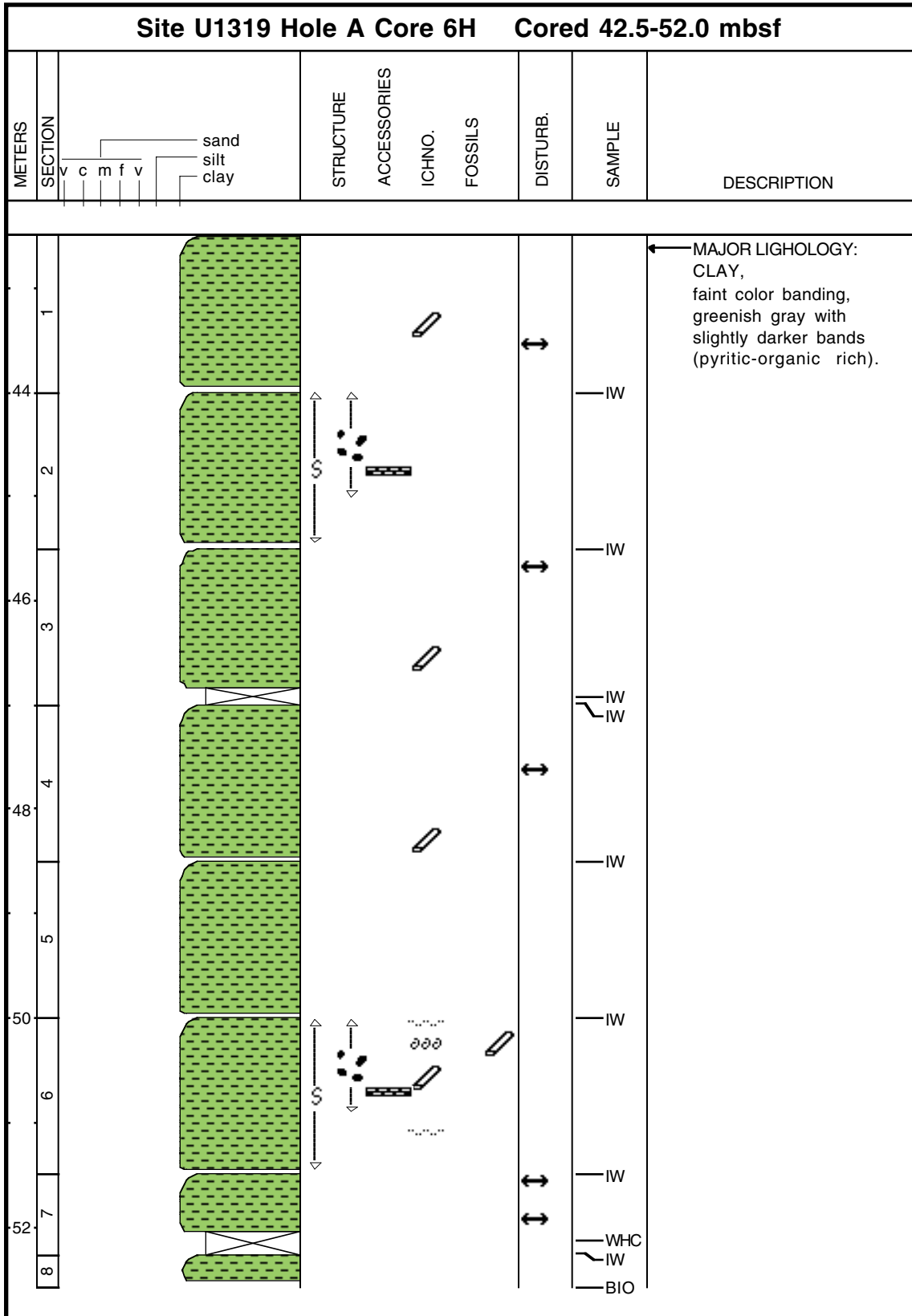
30.43- 30.46 mbsf:
Foraminifer-rich sand and
echinoderm spicules in
irregular laminae.



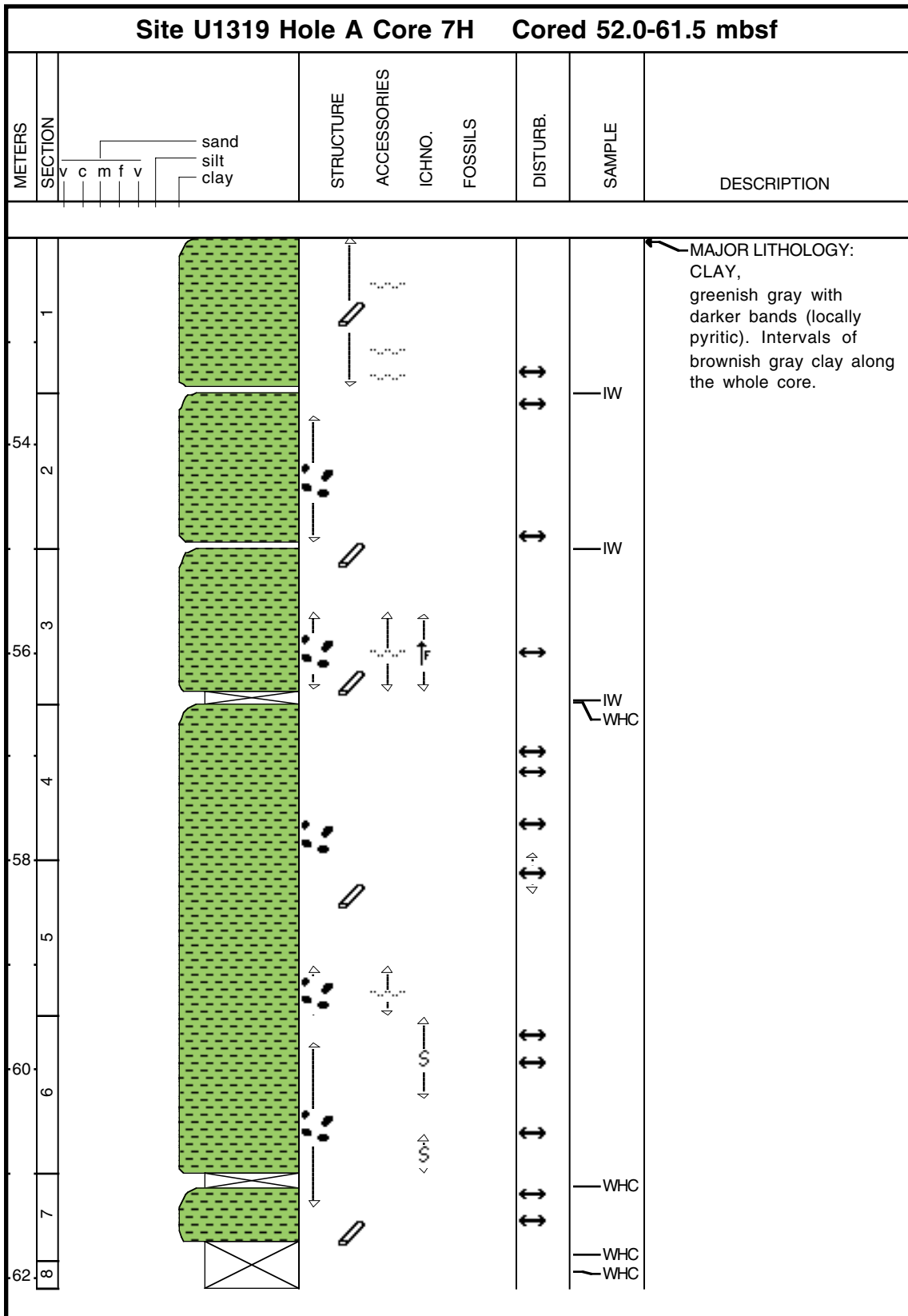
Core Photo



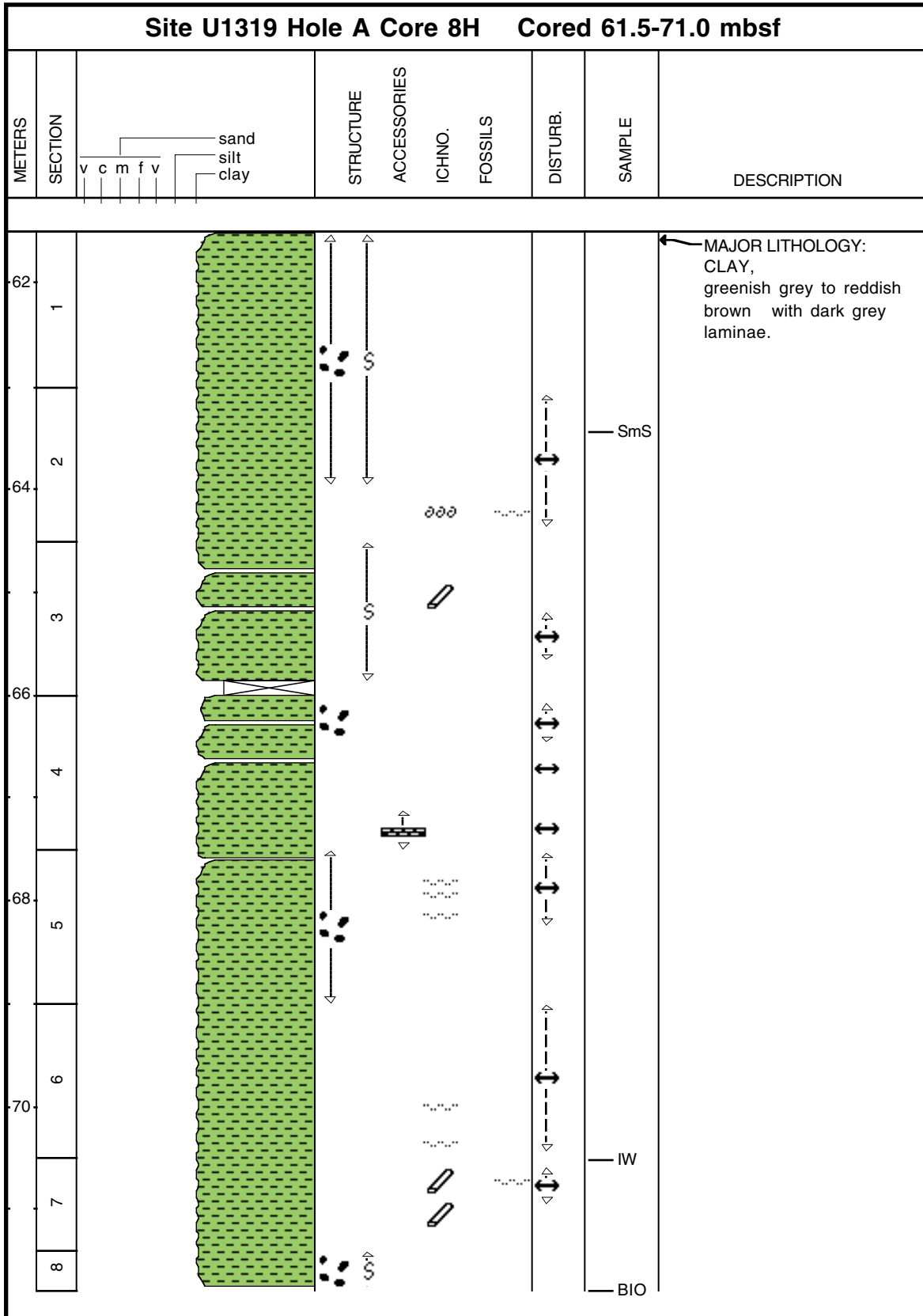
Core Photo



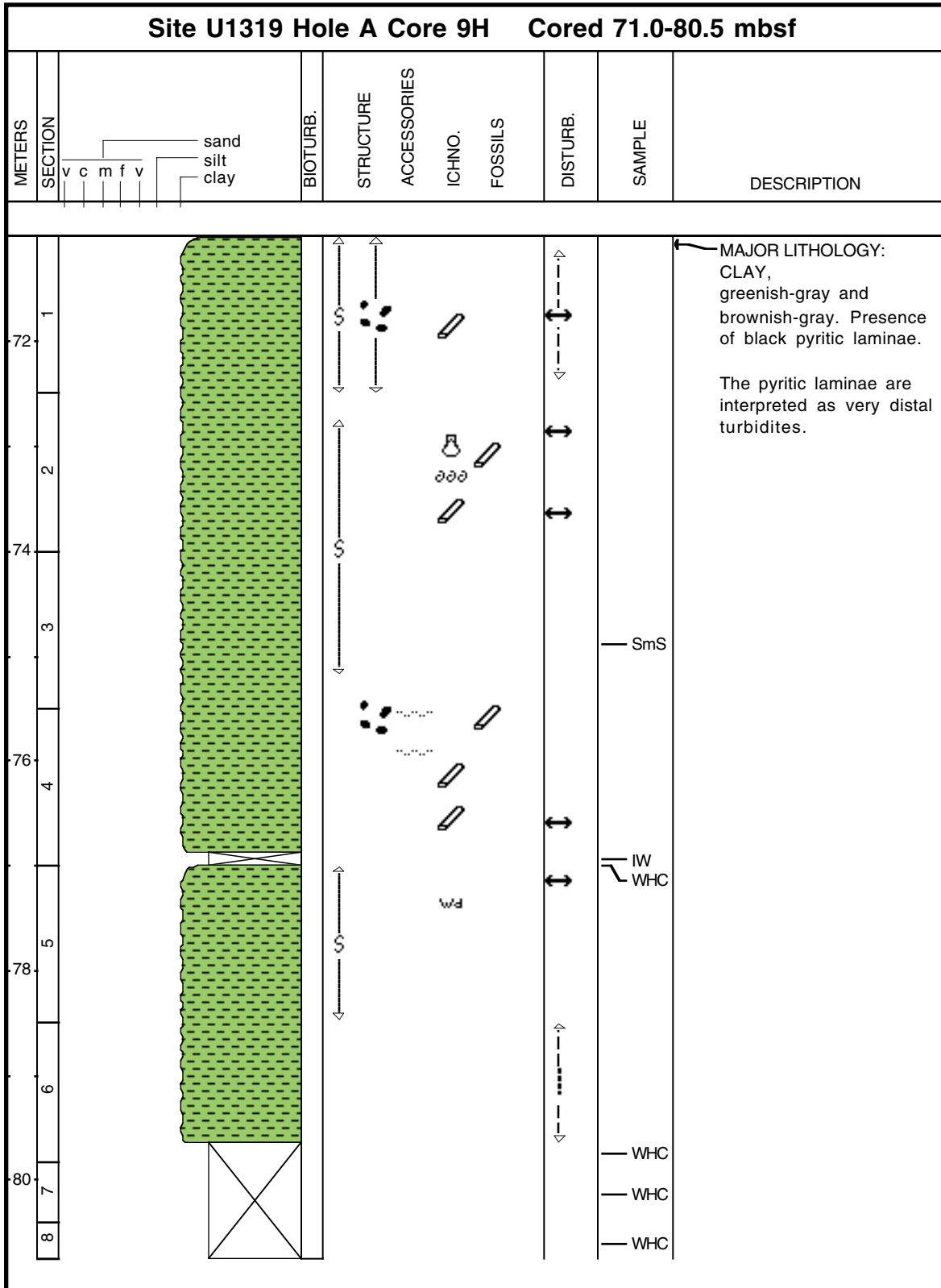
Core Photo



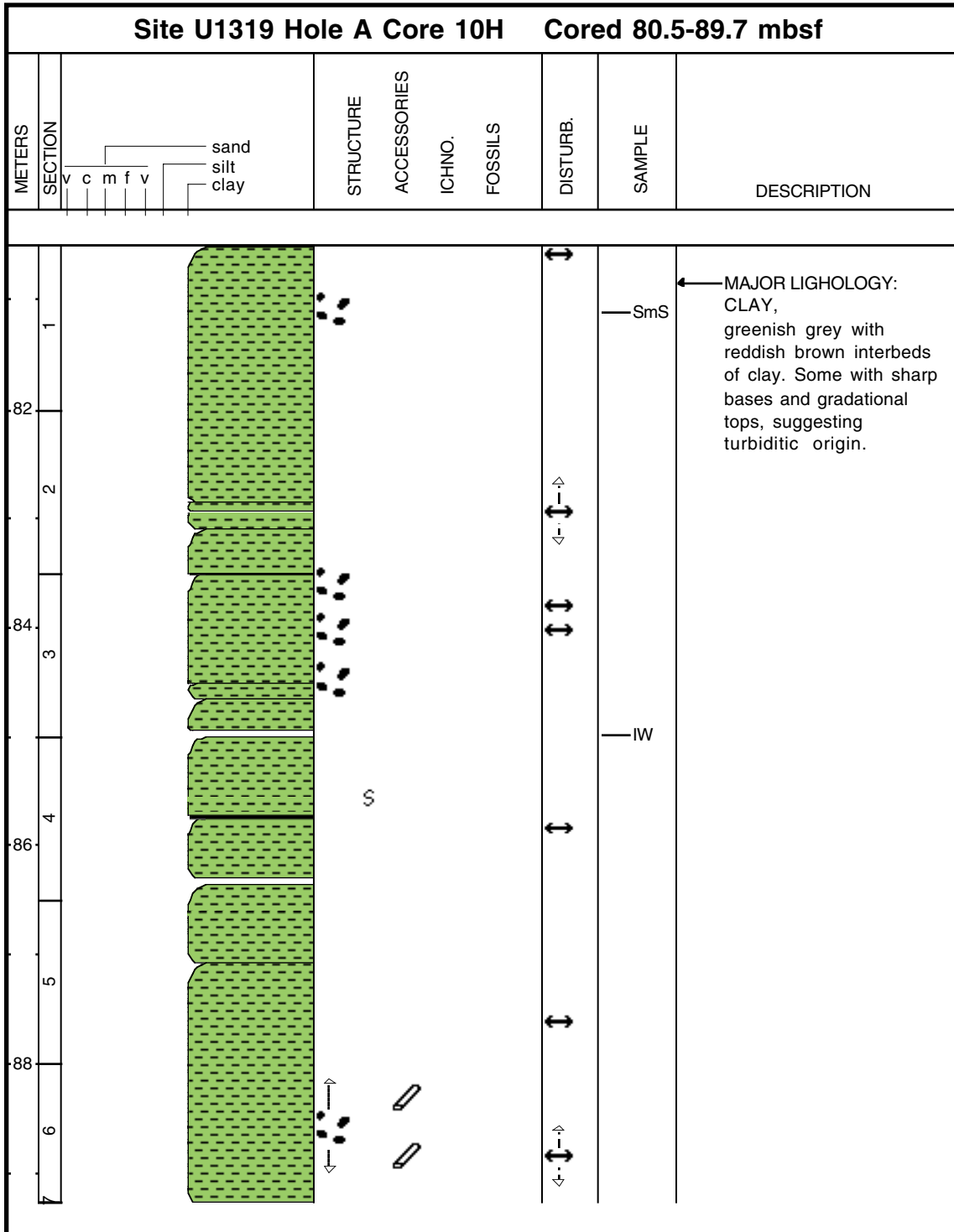
Core Photo



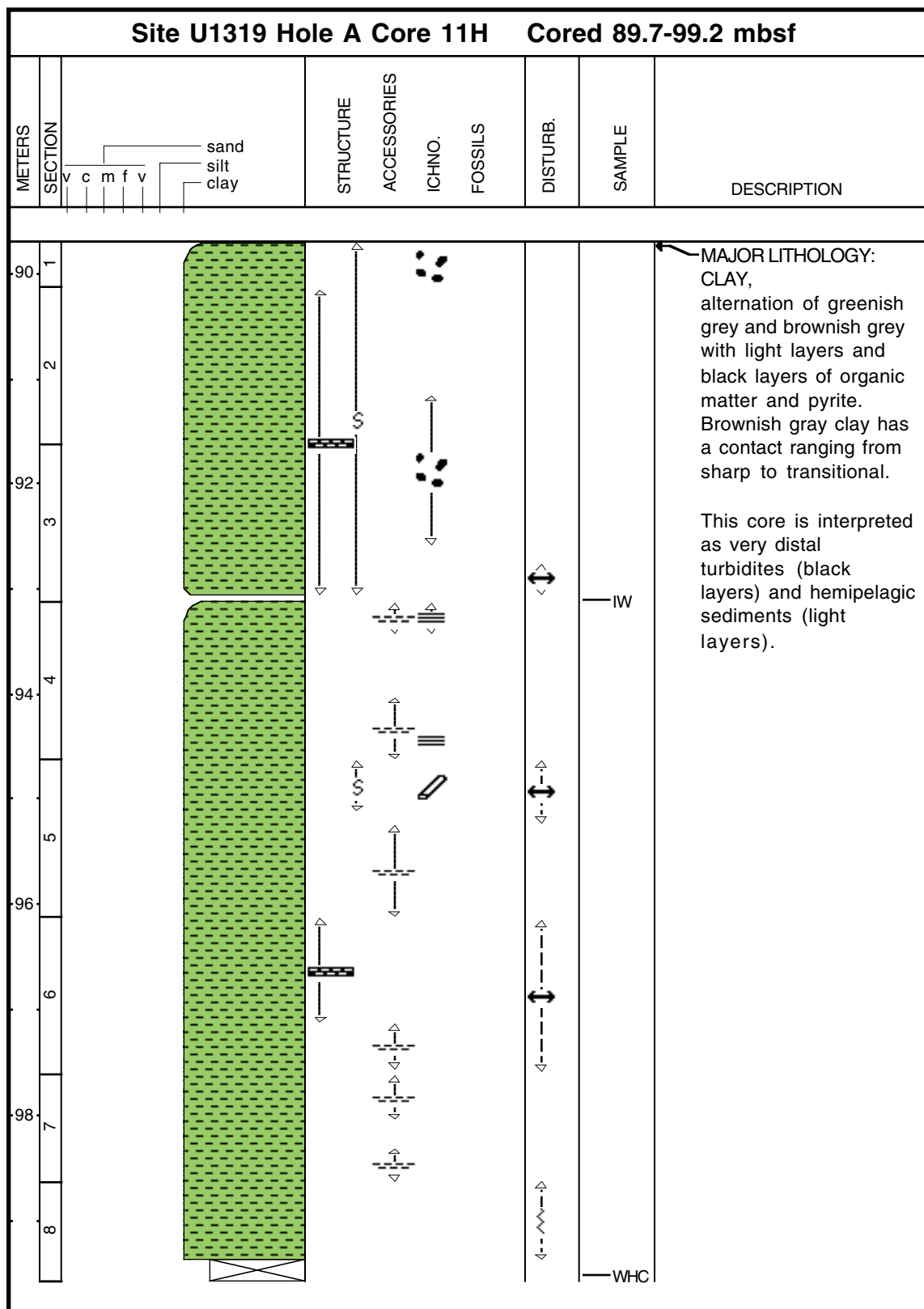
Core Photo



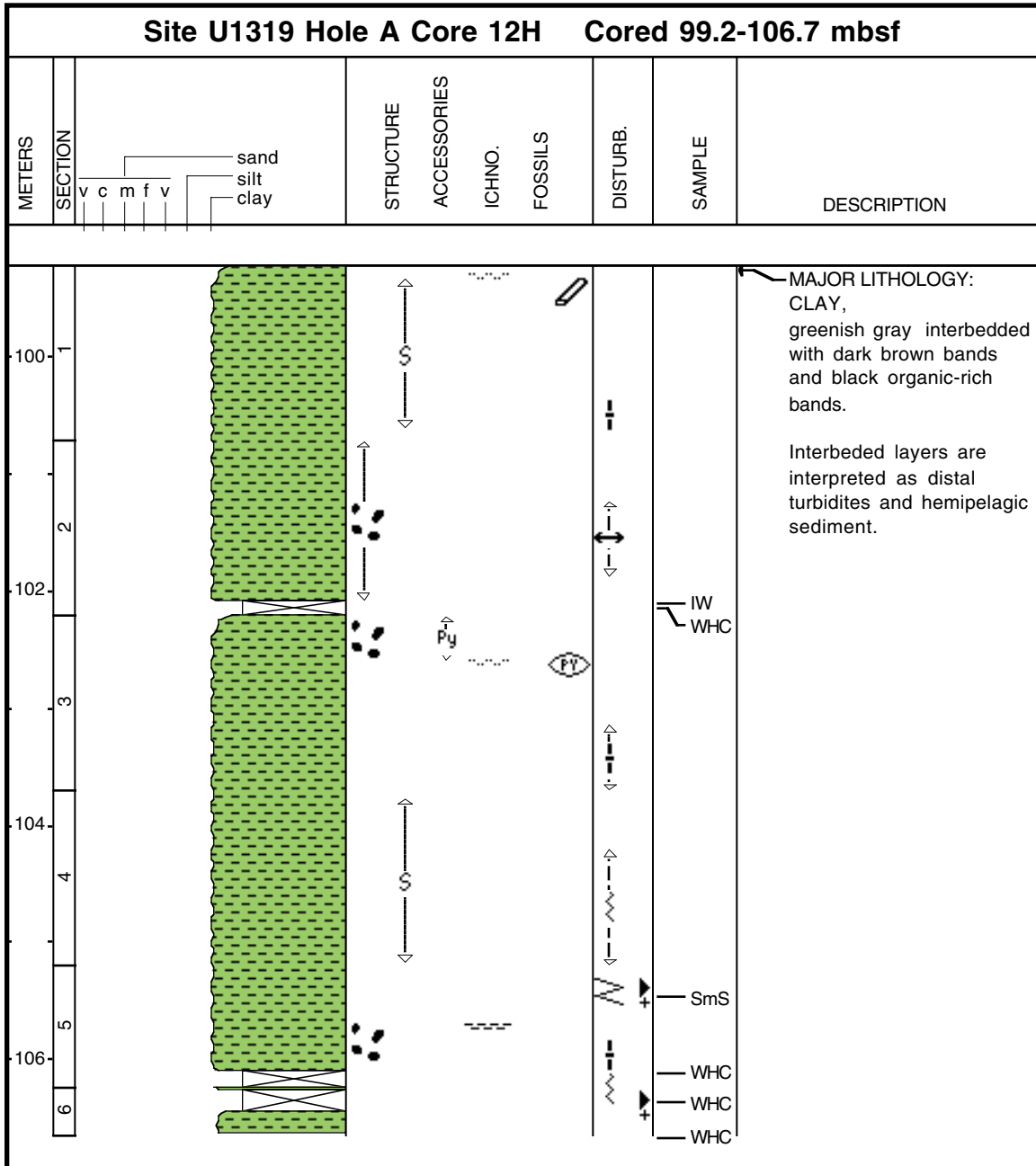
Core Photo



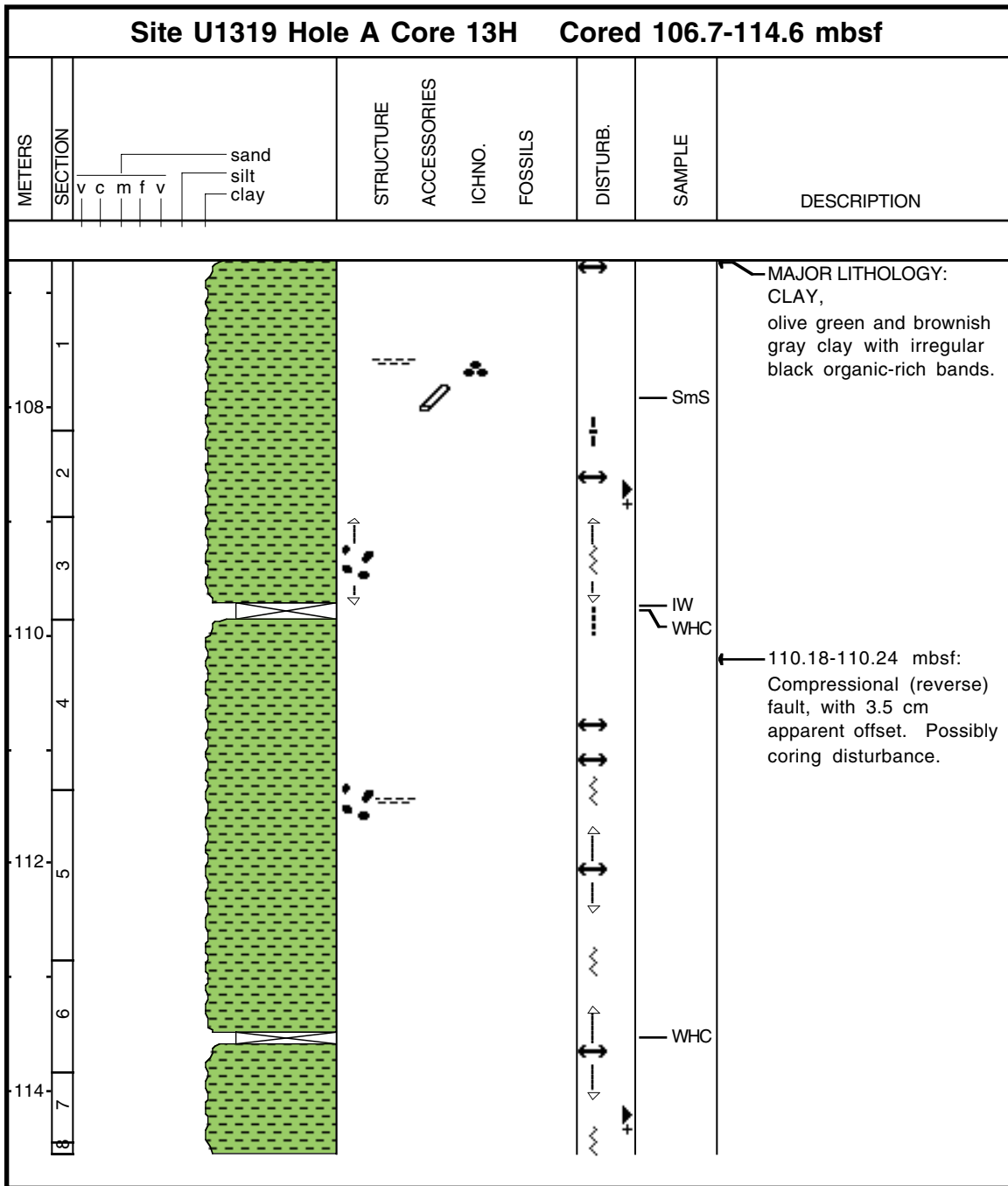
Core Photo



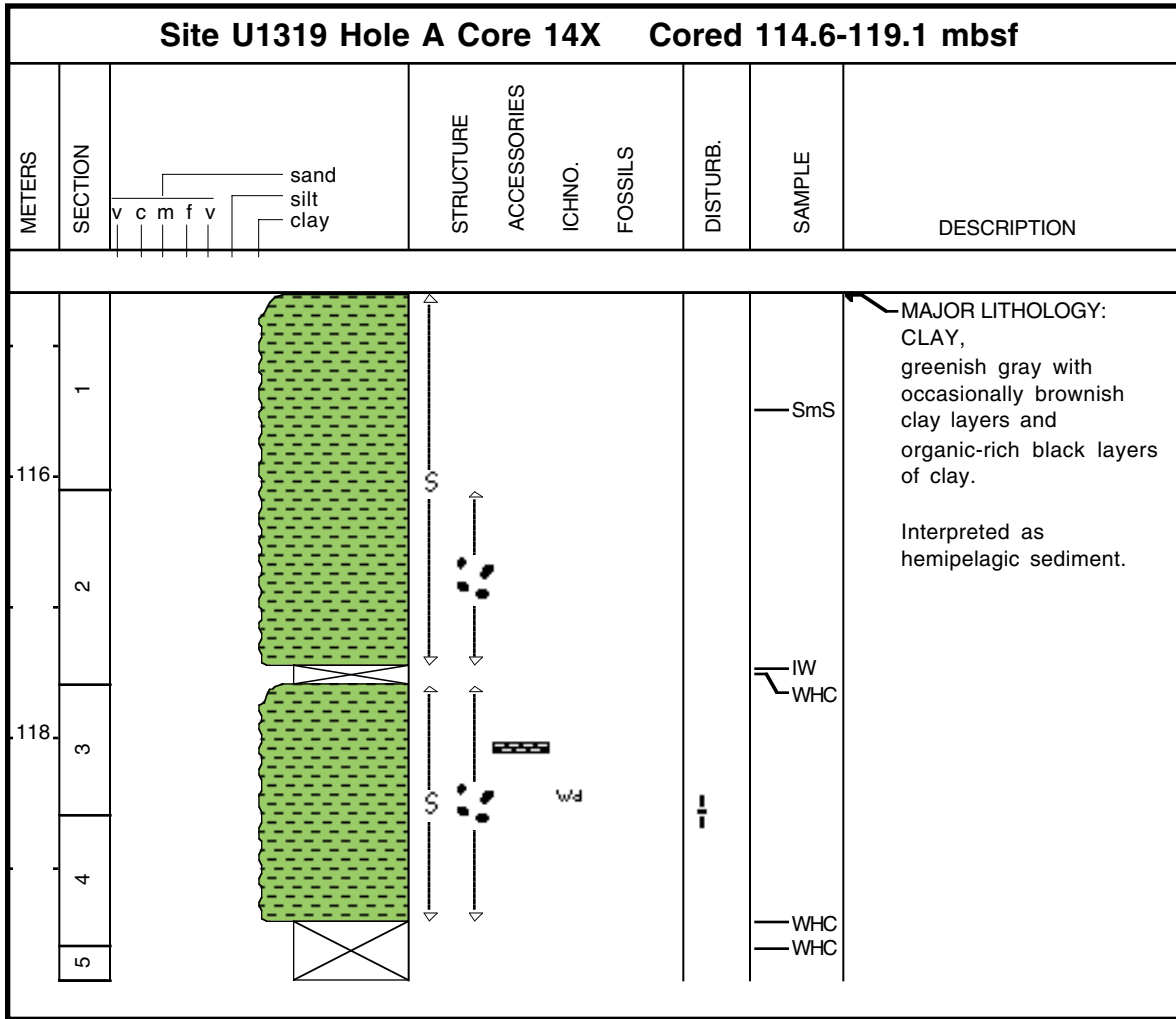
Core Photo



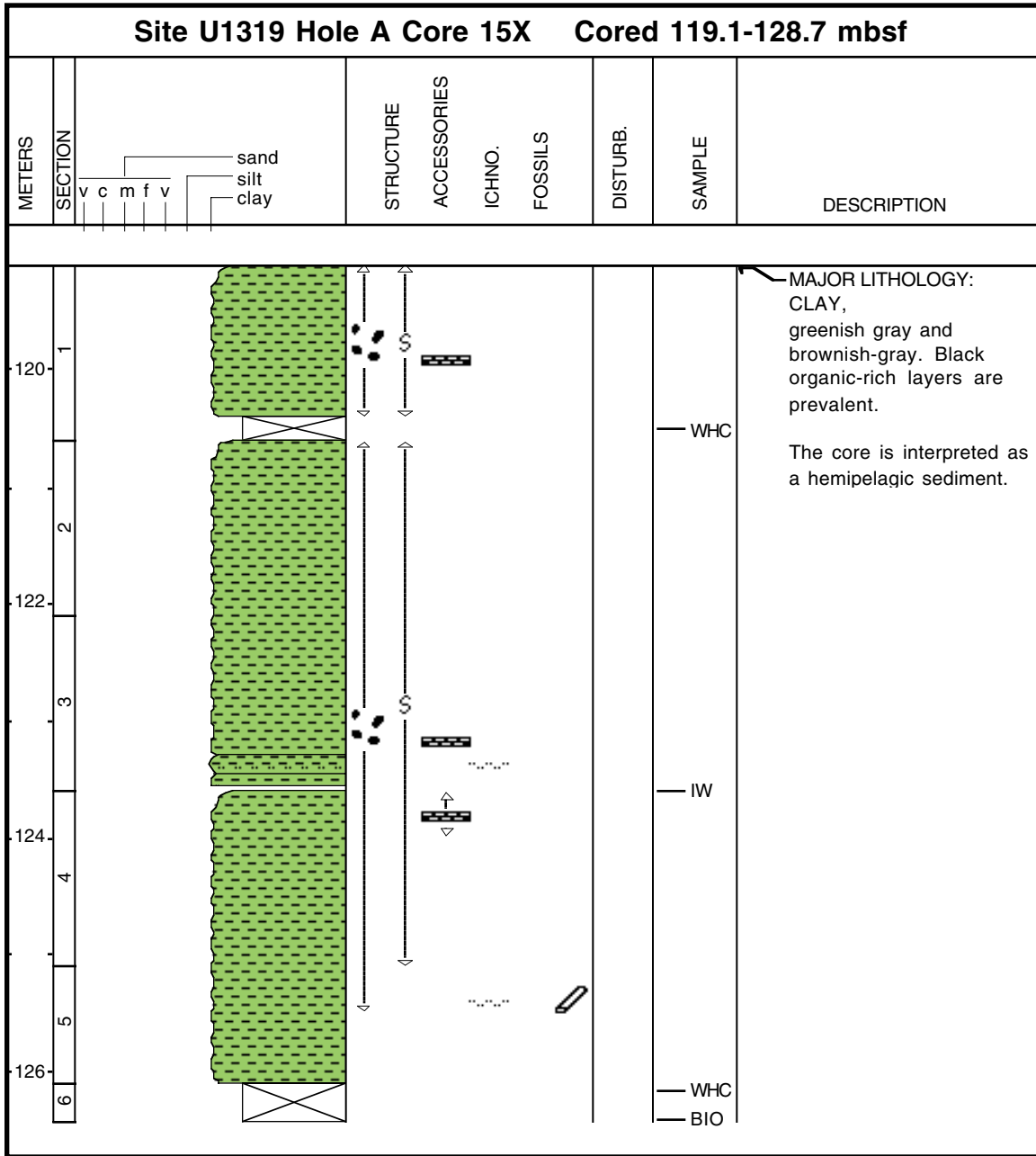
Core Photo



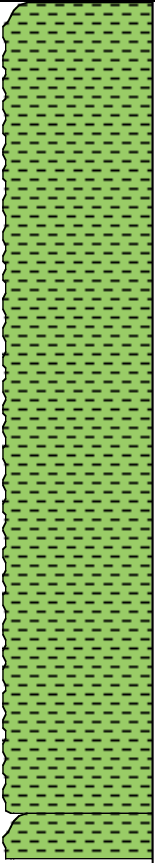
Core Photo



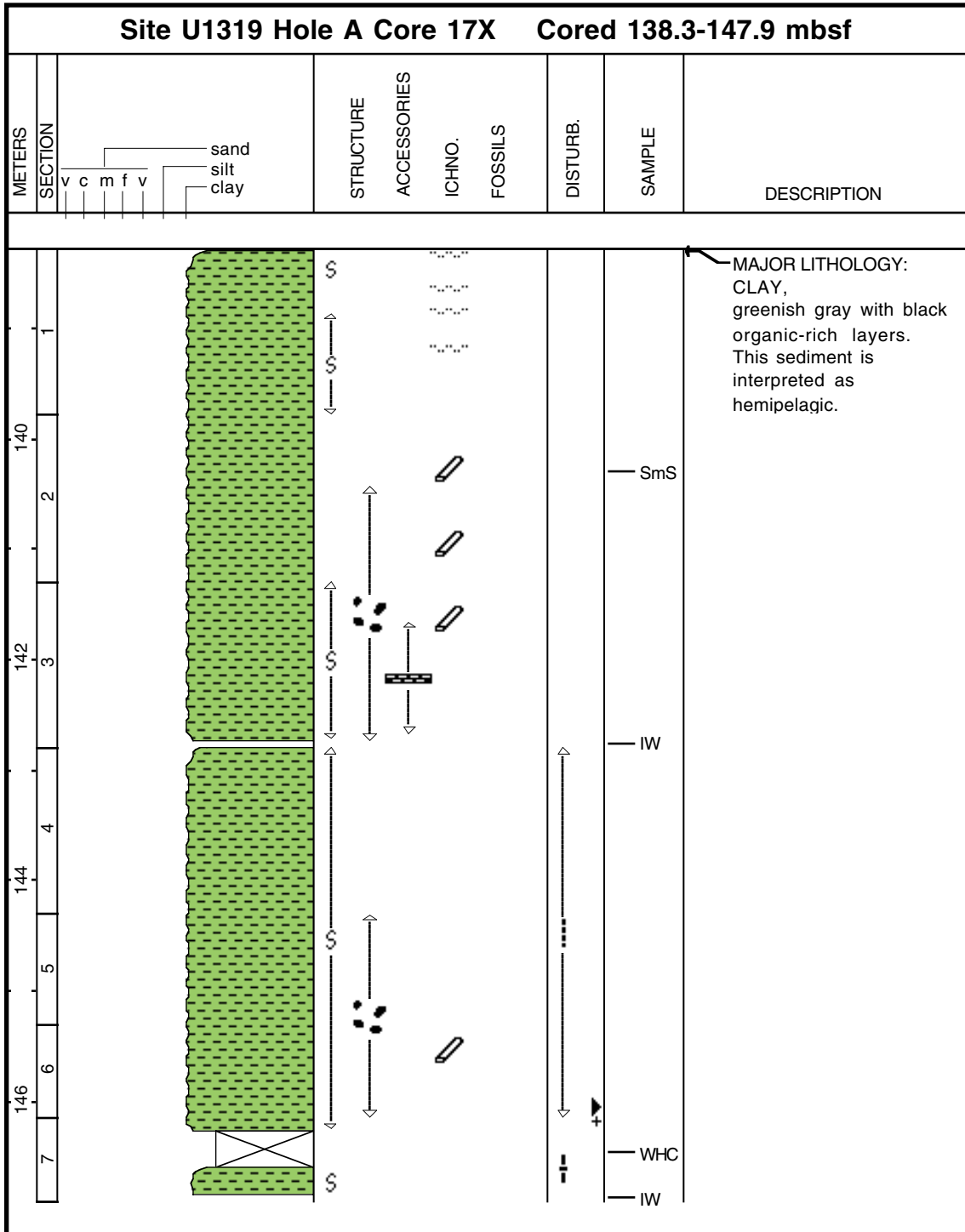
Core Photo



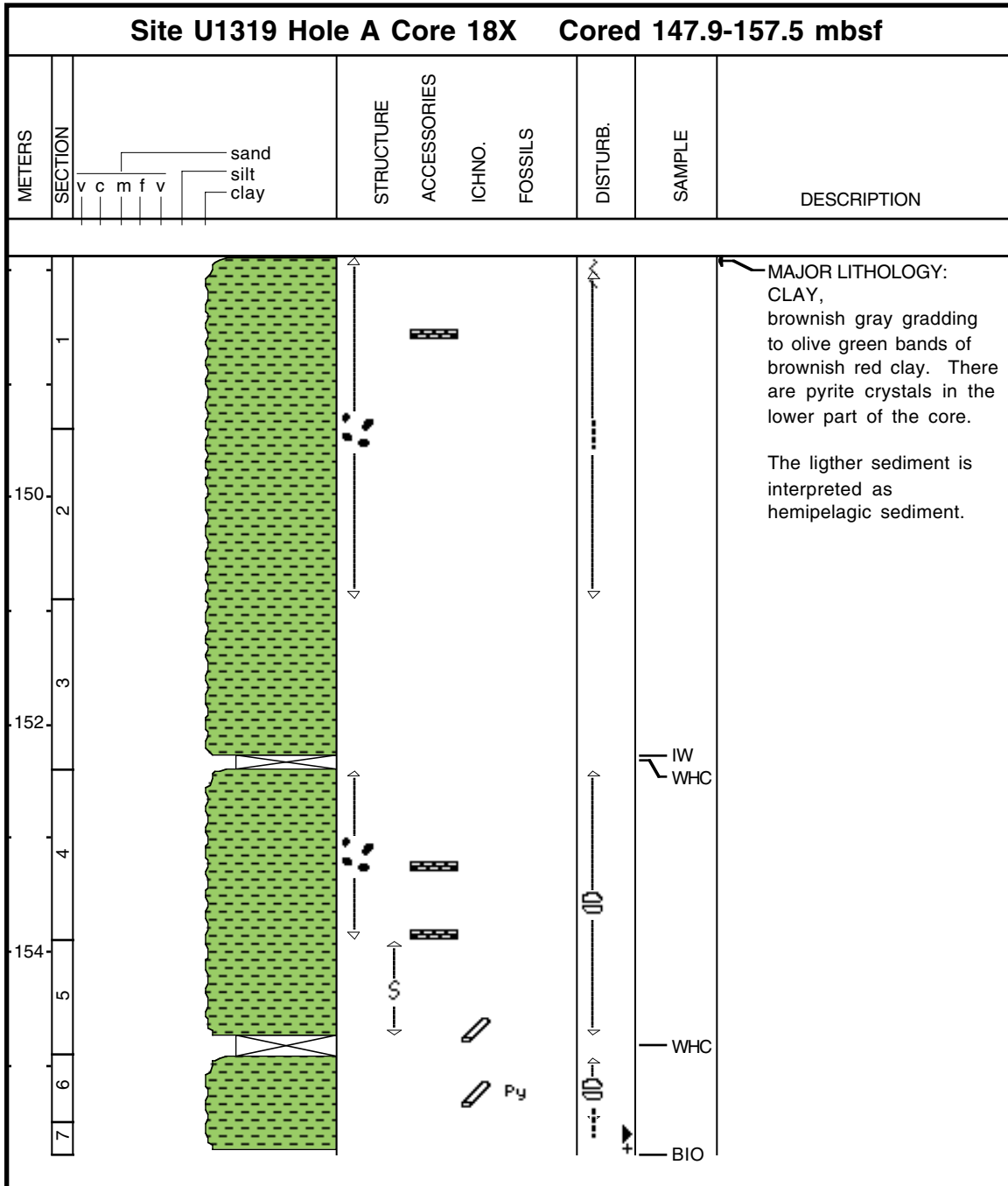
Core Photo

Site U1319 Hole A Core 16X Cored 128.7-138.3 mbsf									
METERS	SECTION	sand silt clay	STRUCTURE	ACCESSORIES	ICHNO. FOSSILS	DISTURB.	SAMPLE	DESCRIPTION	
									v
130.0	1							<p>MAJOR LITHOLOGY: CLAY, greenish gray, mottled with redish brown intervals and small calcite concretions. Intervals of darker clay are pyritic.</p> <p>Py</p> <p>S</p> <p>BIO</p>	
132.0	2								
	3								
	4								
134.0	5								
	6								

Core Photo



Core Photo





Leg	Site	H	Cor	T	Sc	Top (cm)	Depth (mbsf)	Lithology	Texture			Minerals										Biogenic					Remark								
									Sand	Silt	Clay	Quartz	Feldspar	Carbonate	Chlorite	Clay mineral	Mica	Calcite	Glauconite	Pyrite	Volcanic glass	Foraminifers	Diatoms	Radiolarians	Nannofossils	Sponge spic		Organic debris	Pelecypod	Silicoflagellates					
308	1319	A	1	H	1	71	0.71	D	R	P	D																							Light greenish gray clay.	
308	1319	A	1	H	3	33	3.33	M	D	C	P					P																		Thin fine sand bed.	
308	1319	A	2	H	2	18	6.18	D	D	P	P																							laminated silt sand	
308	1319	A	2	H	2	80	6.8	D		A	D													P										light gray clay	
308	1319	A	2	H	CC	10	14.29	M	A	A	A					A			A															very fine sand-silt	
308	1319	A	3	H	3	106	18.06	D		C	D													P			*	C						reddish brown clay	
308	1319	A	3	H	3	115	18.15	D		C	D									A														reddish brown clay	
308	1319	A	3	H	4	27	18.77	D		A	D													P				P						bioturbation pale red mud	
308	1319	A	3	H	4	125	19.75	D		A	D													P										reddish clay	
308	1319	A	3	H	5	50	20.5	D		A	D					C	*	D																greenish gray clay	
308	1319	A	3	H	5	137	21.37	M	A	C	A					C			A						A									greenish gray clay	
308	1319	A	3	H	6	120	22.7	M	D	C	P					P			P					D										ash layer	
308	1319	A	4	H	1	68	24.18	M	C	A	D													C										very fine lower silt	
308	1319	A	4	H	4	7	28.07	D		C	D					P																		dark greenish gray clay	
308	1319	A	4	H	5	40	29.9	D	*	C	D					C		R	D					P										gray clay	
308	1319	A	4	H	5	93	30.43	D	*	C	D					C			D					P		R								irregularly laminaed clay with sand	
308	1319	A	4	H	6	50	31.5	M	*	C	D					C			D					P		R								reddish brown clay	
308	1319	A	4	H	6	140	32.4	D	*	C	D													P								*		gray clay	
308	1319	A	5	H	2	60	35.1	D		A	D					P			D						R									gray dark mud	
308	1319	A	5	H	2	62.5	35.13	D		A	D								R															gray dark mud	
308	1319	A	5	H	3	12	36.12	M		C	D																							clay lighter and mud darker	
308	1319	A	5	H	6	45	40.95	M		C	D																								silt laminae
308	1319	A	5	H	6	45.5	40.96	M		C	A								R																silt laminae
308	1319	A	5	H	6	46	40.96	M		R	D								D																mud laminae
308	1319	A	5	H	6	48	40.98	M		A	D																								clay laminae
308	1319	A	8	H	2	43	63.43	D		R	D								P																red clay layer
308	1319	A	9	H	3	87	74.87	M		C	A																								black clay layer
308	1319	A	10	H	1	59	81.09	M		D	P																								mottled appearance; silt
308	1319	A	11	H	6	20	96.32	D		A	D																								dark olive green mud
308	1319	A	11	H	6	21	96.33	D	*	A	D									C		R	D												dark olive green mud
308	1319	A	12	H	5	25	105.45	D	*	A	D																								brownish clay
308	1319	A	13	H	1	120	107.9	M		A	D																								white burrow; mud
308	1319	A	14	X	1	86	115.46	D		A	D																								greenish gray clay
308	1319	A	15	X	4	16	123.76	D		A	D																								greenish clay
308	1319	A	16	X	1	87	129.57	D		A	D									C		R	D												greenish gray clay
308	1319	A	17	X	2	49	140.29	D		C	D																								light greenish clay