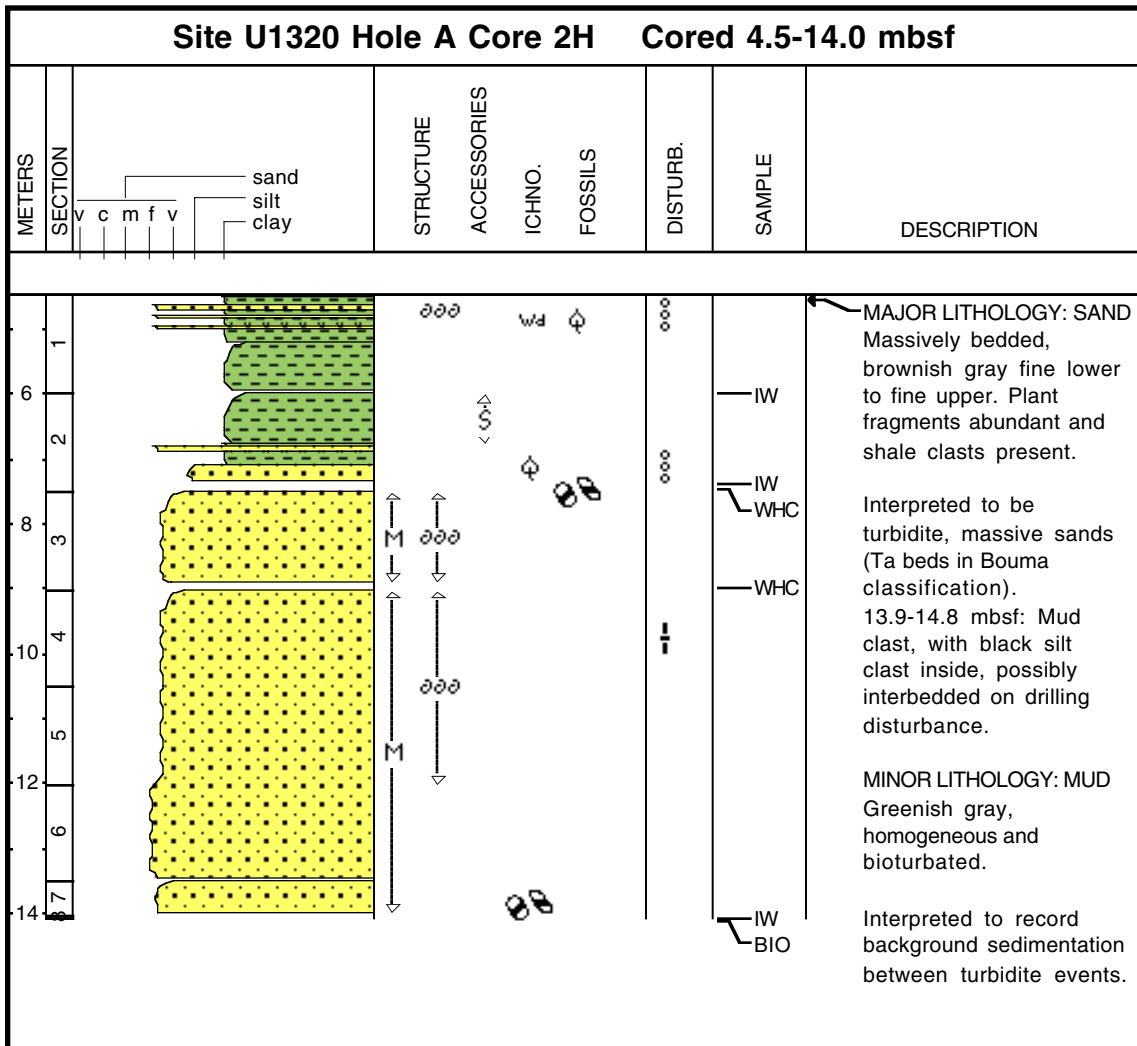


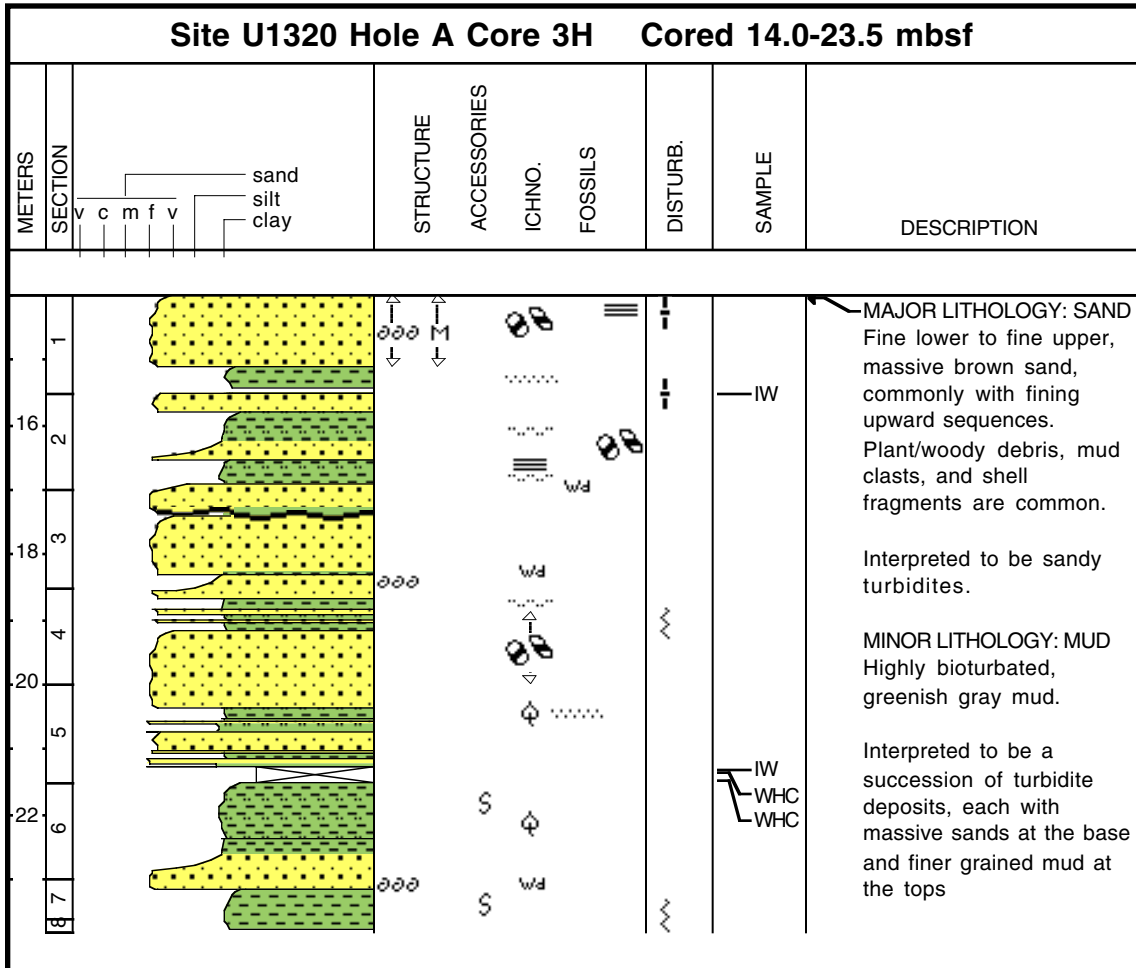
Core Photo

Site U1320 Hole A Core 1H Cored 0.0-4.5 mbsf								
METERS	SECTION	STRUCTURE	ACCESSORIES	ICHNO.	FOSSILS	DISTURB.	SAMPLE	DESCRIPTION
1	v							<p>MAJOR LITHOLOGY: CLAY Greenish gray and brownish gray clay with sponge spicules and foraminifers present.</p> <p>Interpreted to be Holocene hemipelagic drape.</p> <p>MINOR LITHOLOGY: SAND Very fine lower to very fine upper sand beds containing plant material.</p>
2	c m f v							
3	v							
4								
4.5								

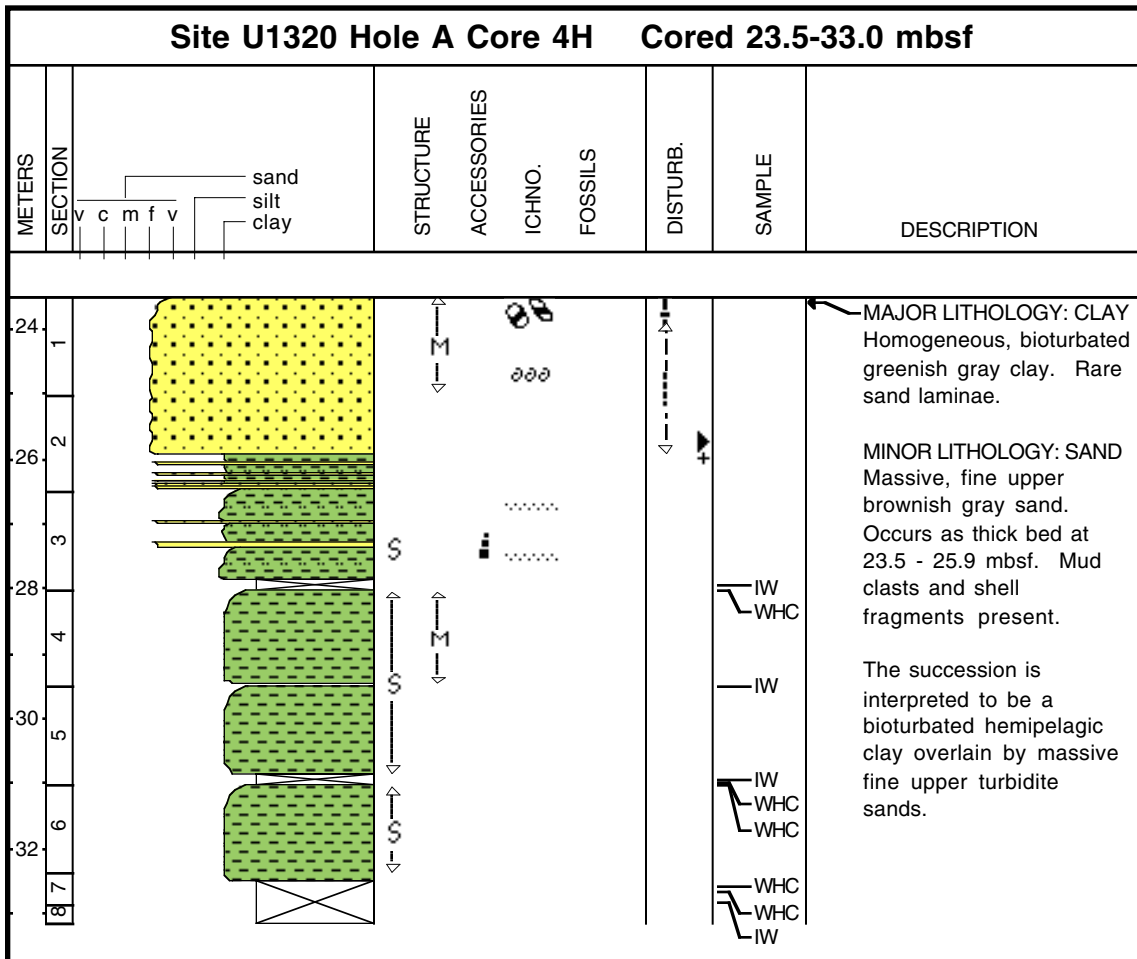
Core Photo



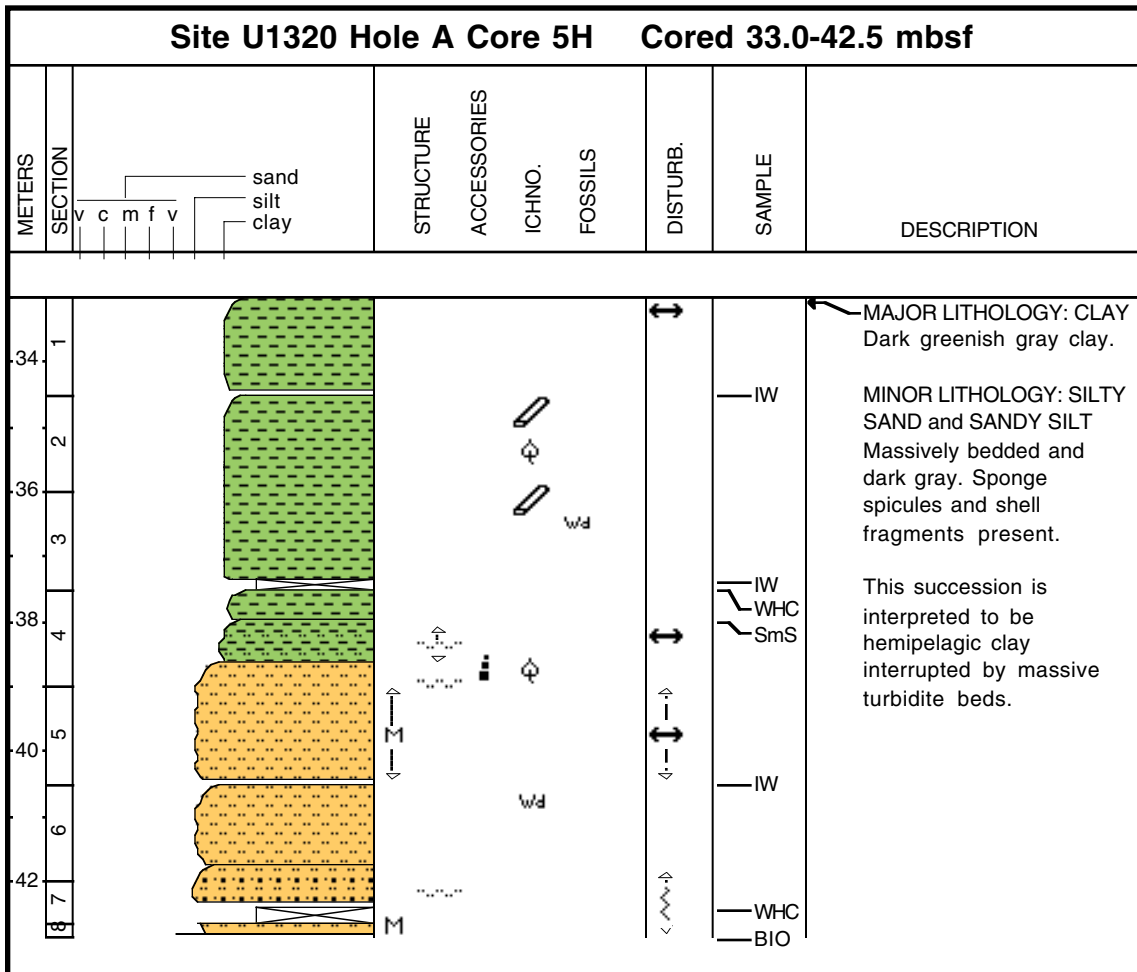
Core Photo



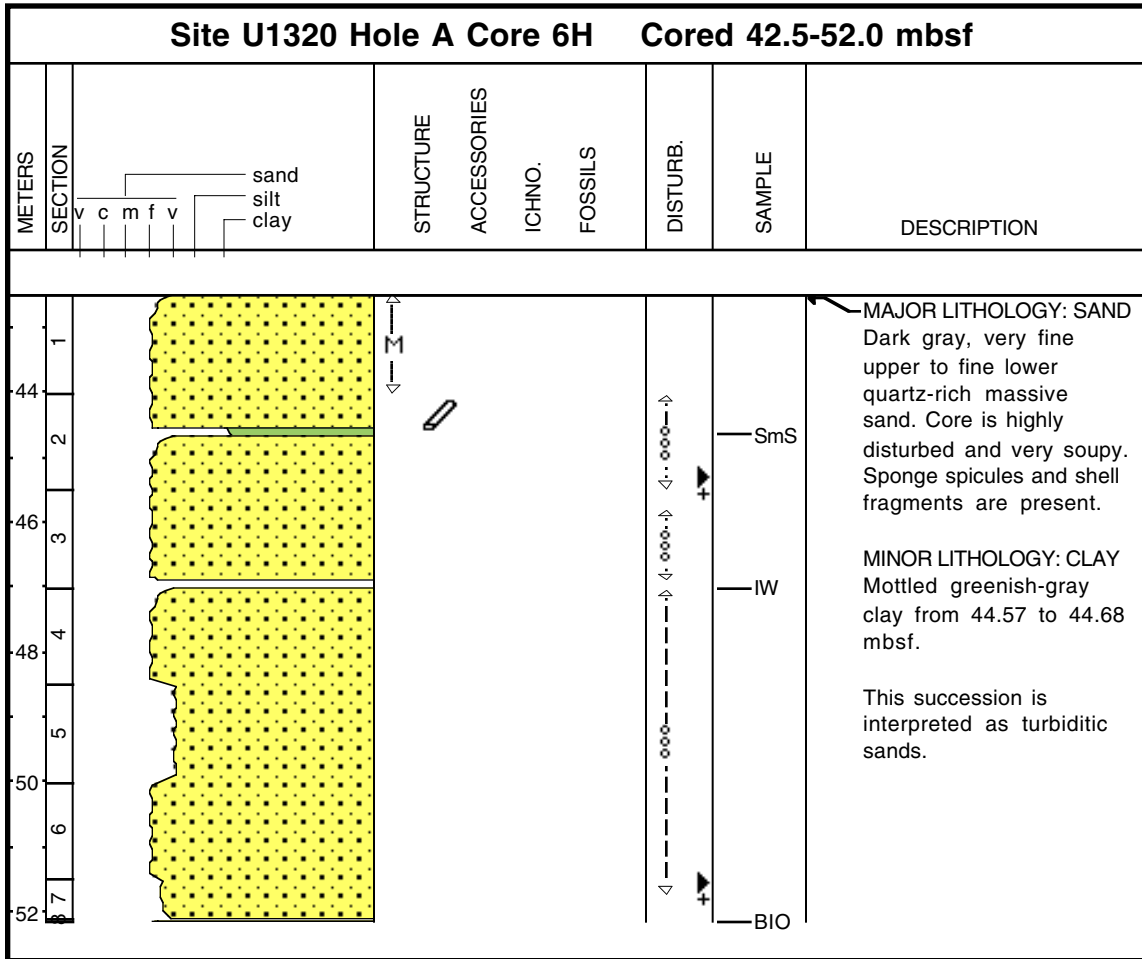
Core Photo



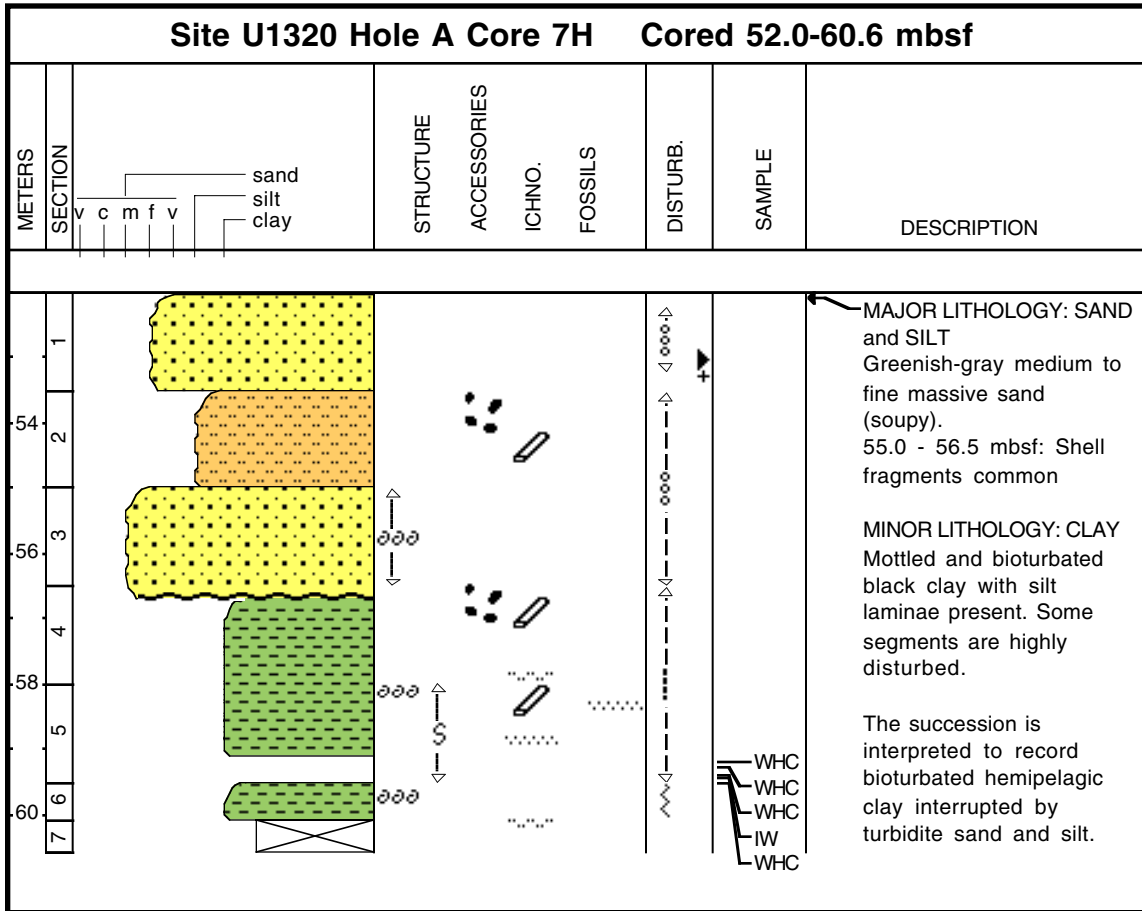
Core Photo



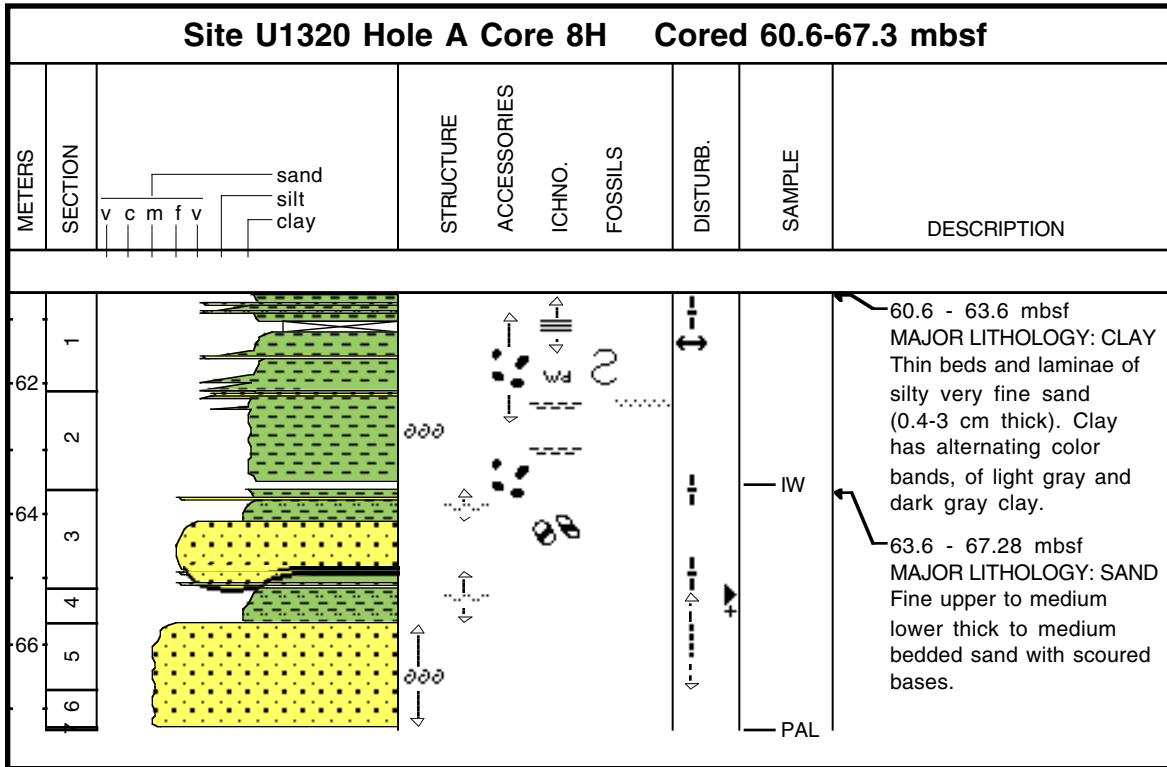
Core Photo



Core Photo



Core Photo



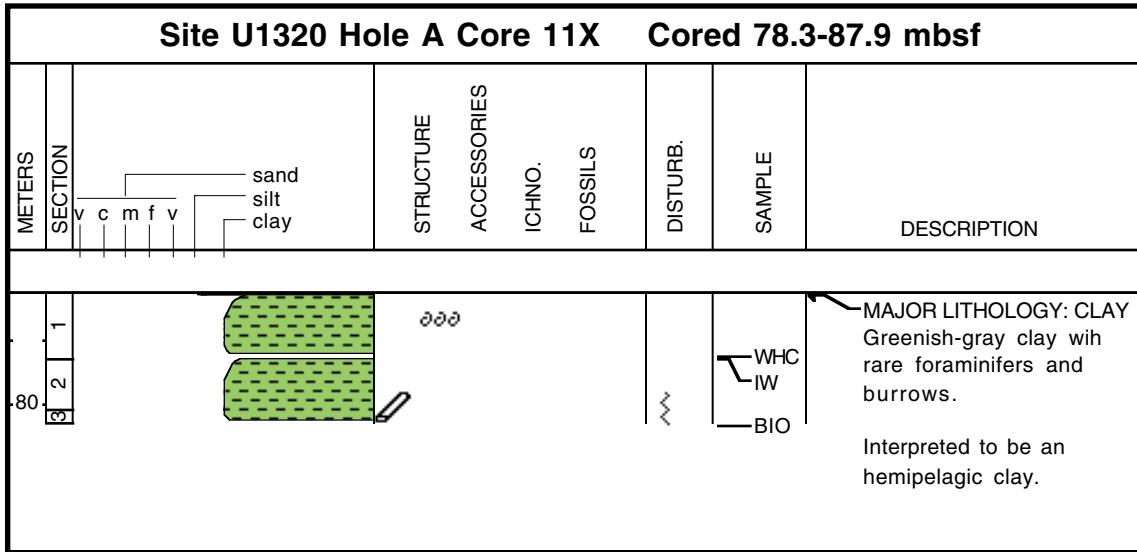
Core Photo

METERS		SECTION		sand silt clay	STRUCTURE	ACCESSORIES	ICHNO.	FOSSILS	DISTURB.	SAMPLE	DESCRIPTION
		v	c								
68	1									IW	<p>MAJOR LITHOLOGY: SAND Fine upper massive sand.</p> <p>This succession is interpreted as very thick turbidite sands.</p>

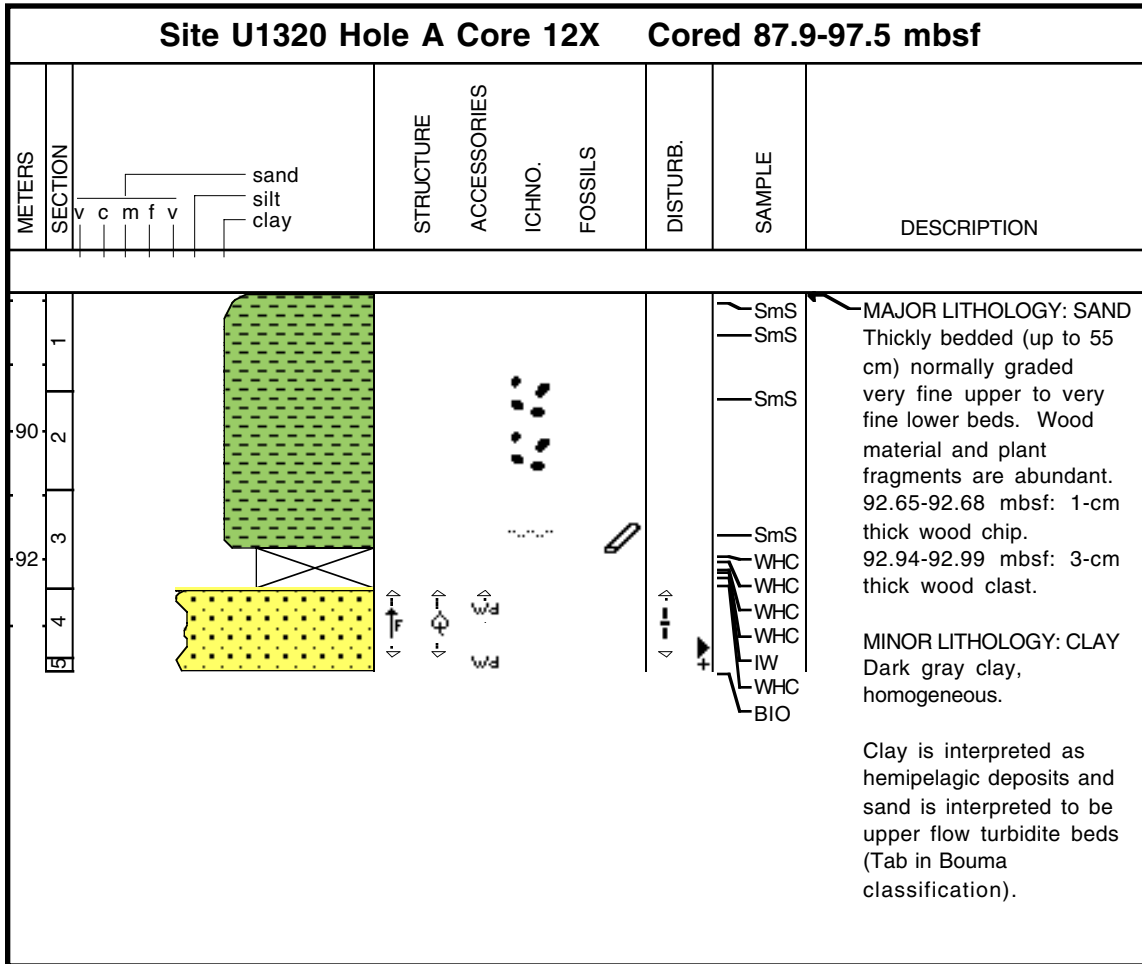
U1320A-10H NO RECOVERY




Core Photo



Core Photo

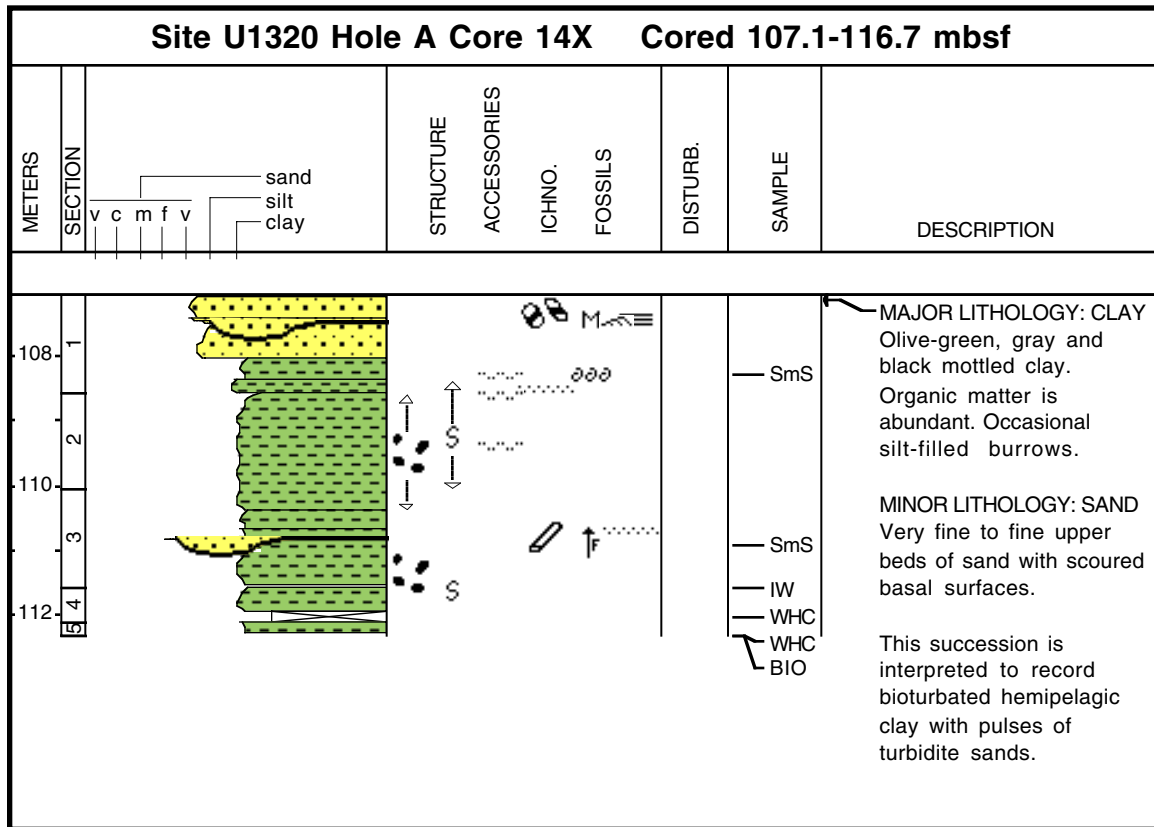


Core Photo

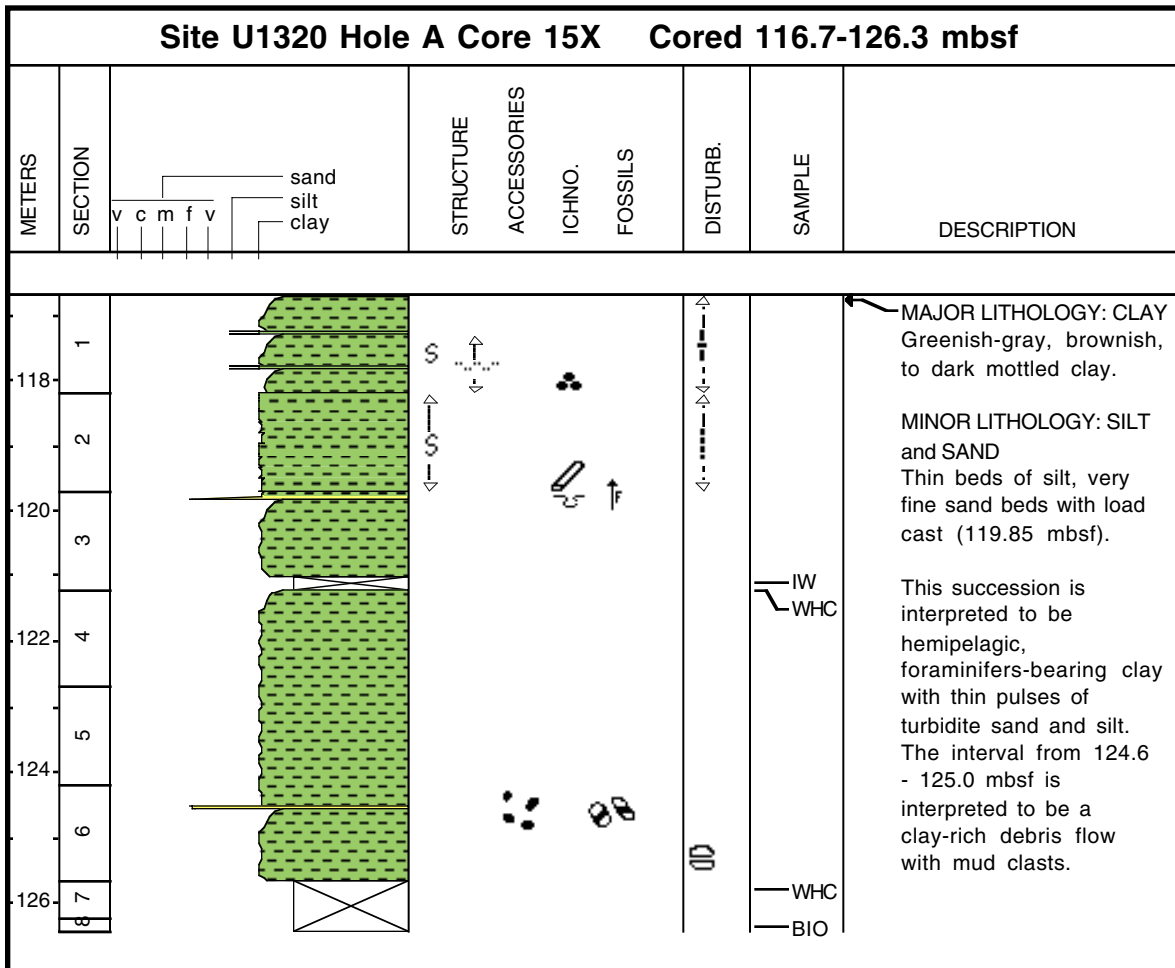
Site U1320 Hole A Core 13X Cored 97.5-107.1 mbsf									
METERS	SECTION		STRUCTURE	ACCESSORIES	ICHNO.	FOSSILS	DISTURB.	SAMPLE	DESCRIPTION
	v c m f v	sand silt clay							
									
<p>Core catcher had sand, according to the paleo report. Nannofossils present.</p>									



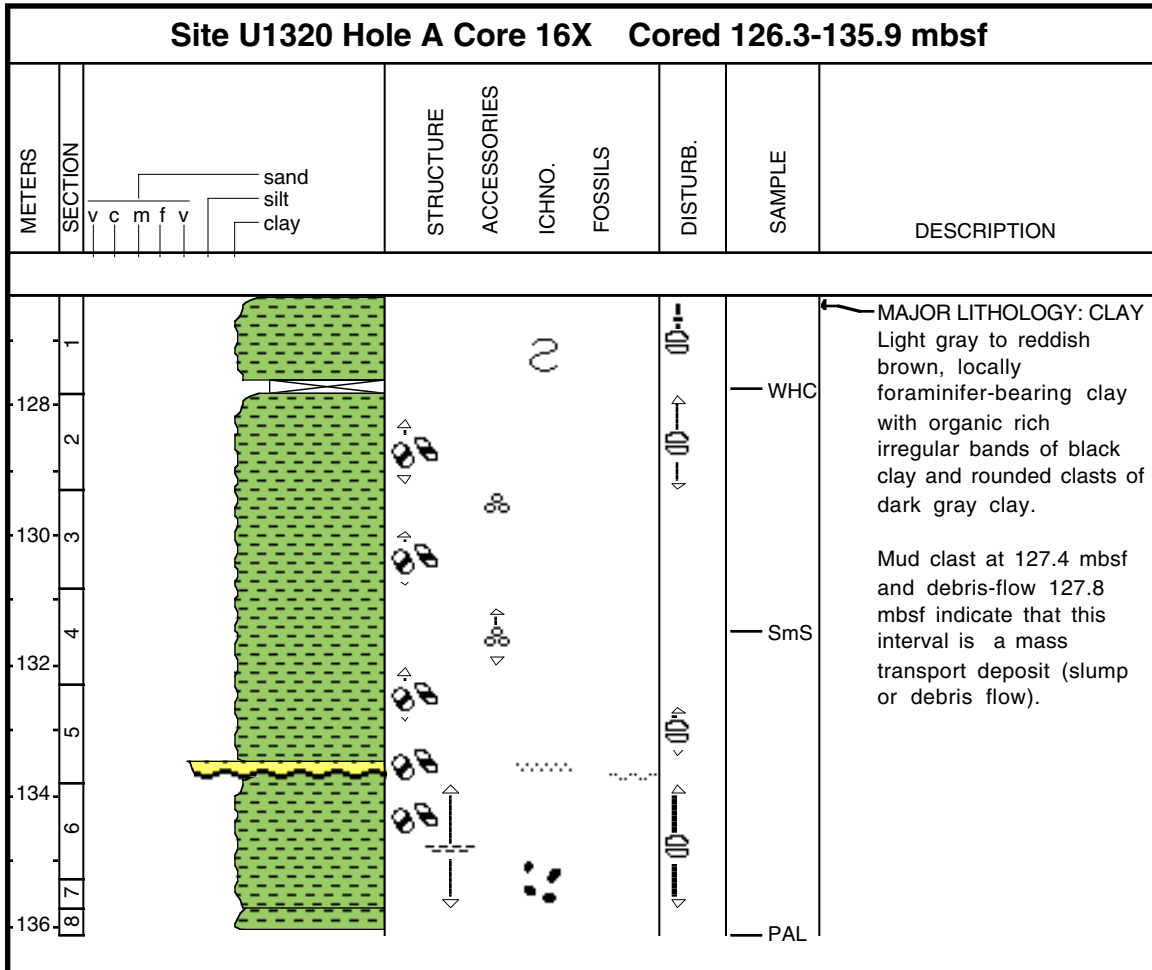
Core Photo



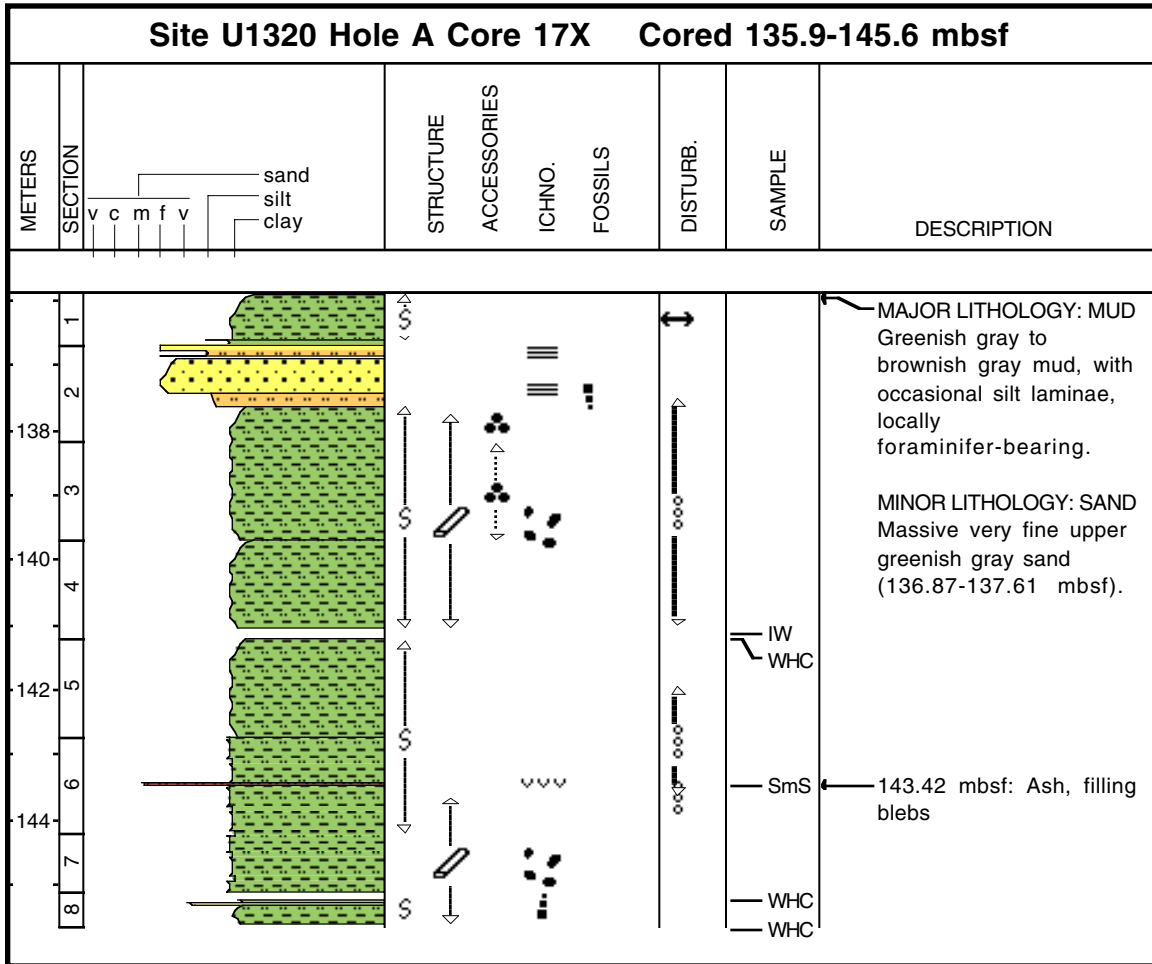
Core Photo



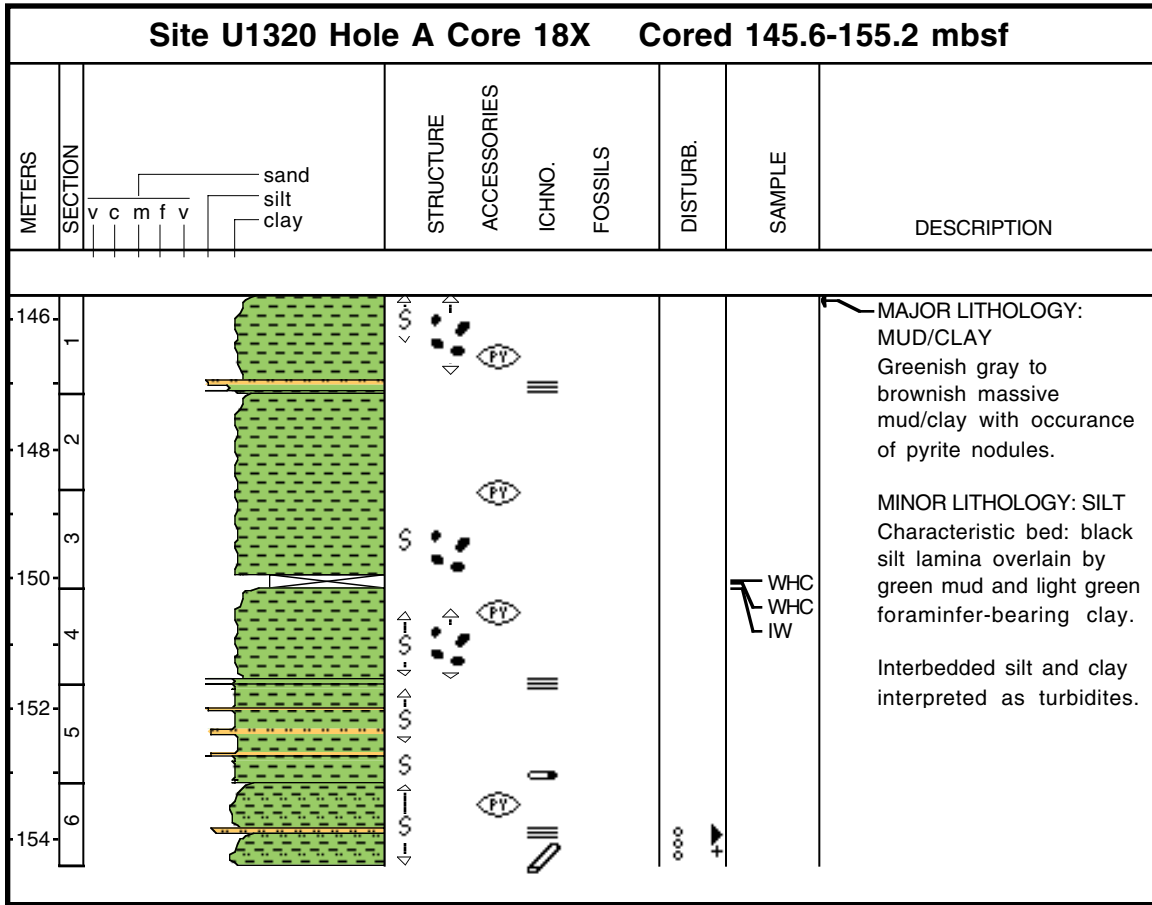
Core Photo



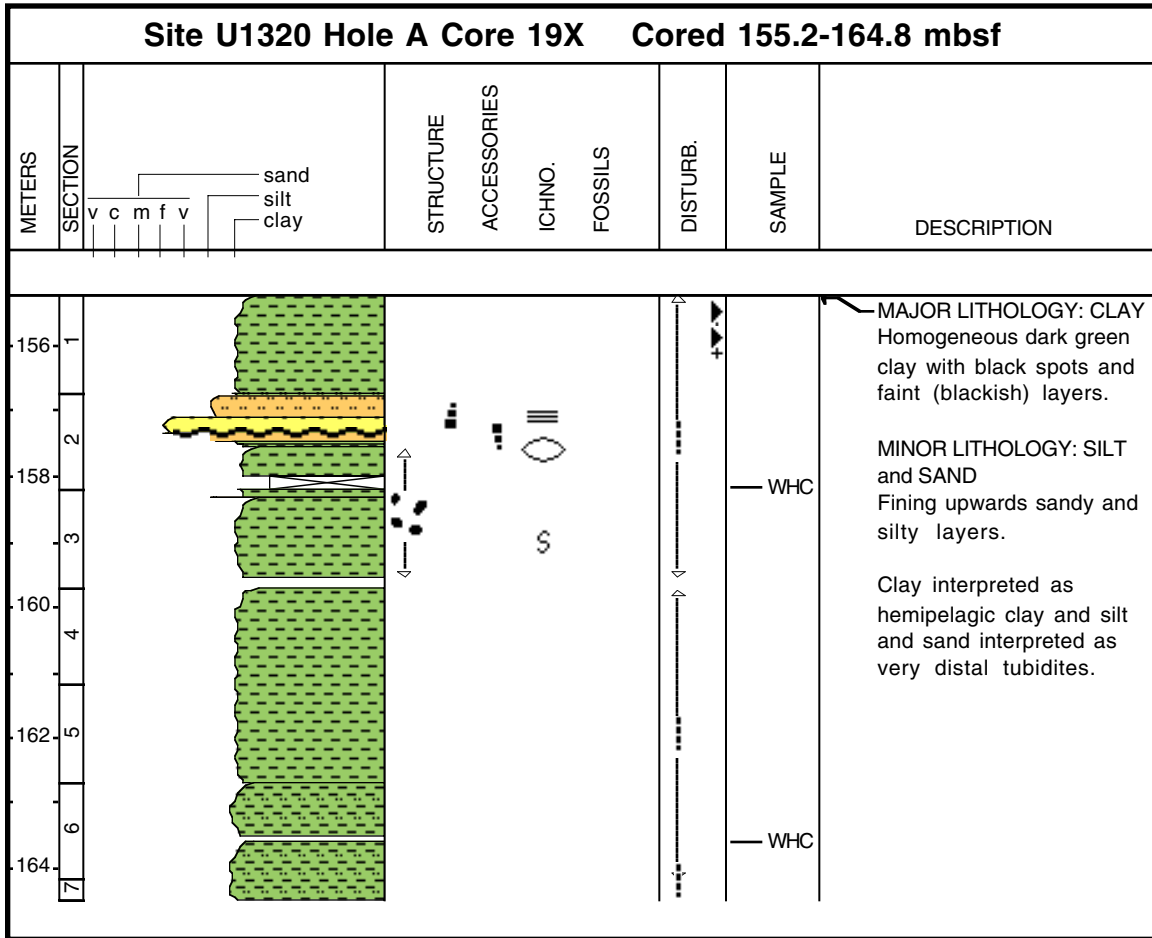
Core Photo



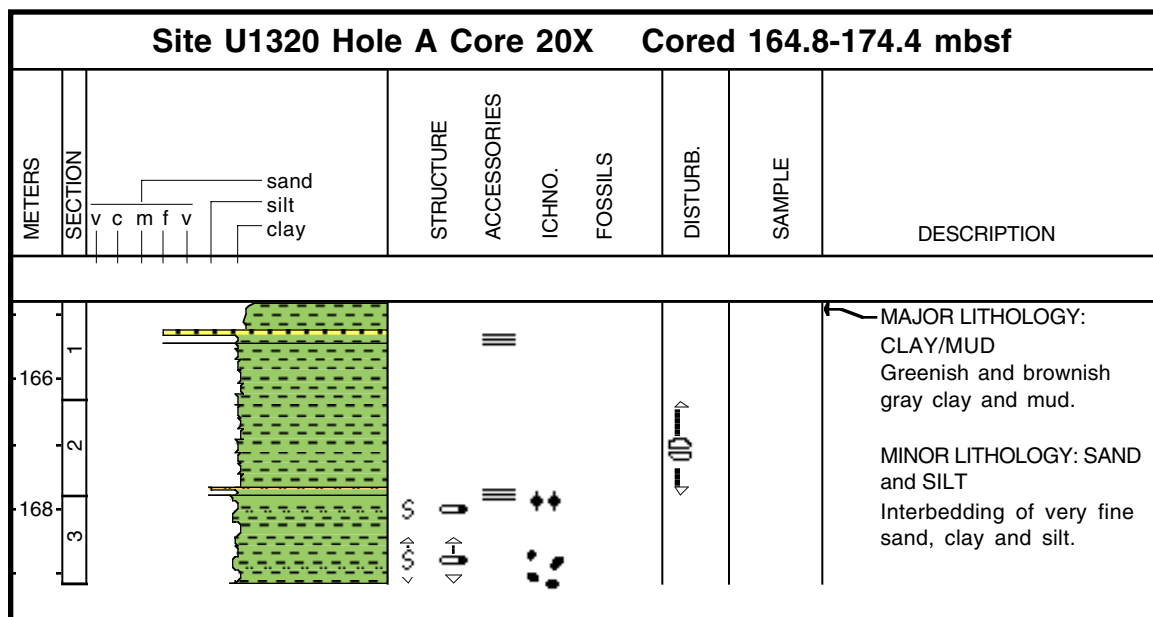
Core Photo



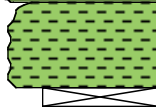
Core Photo



Core Photo

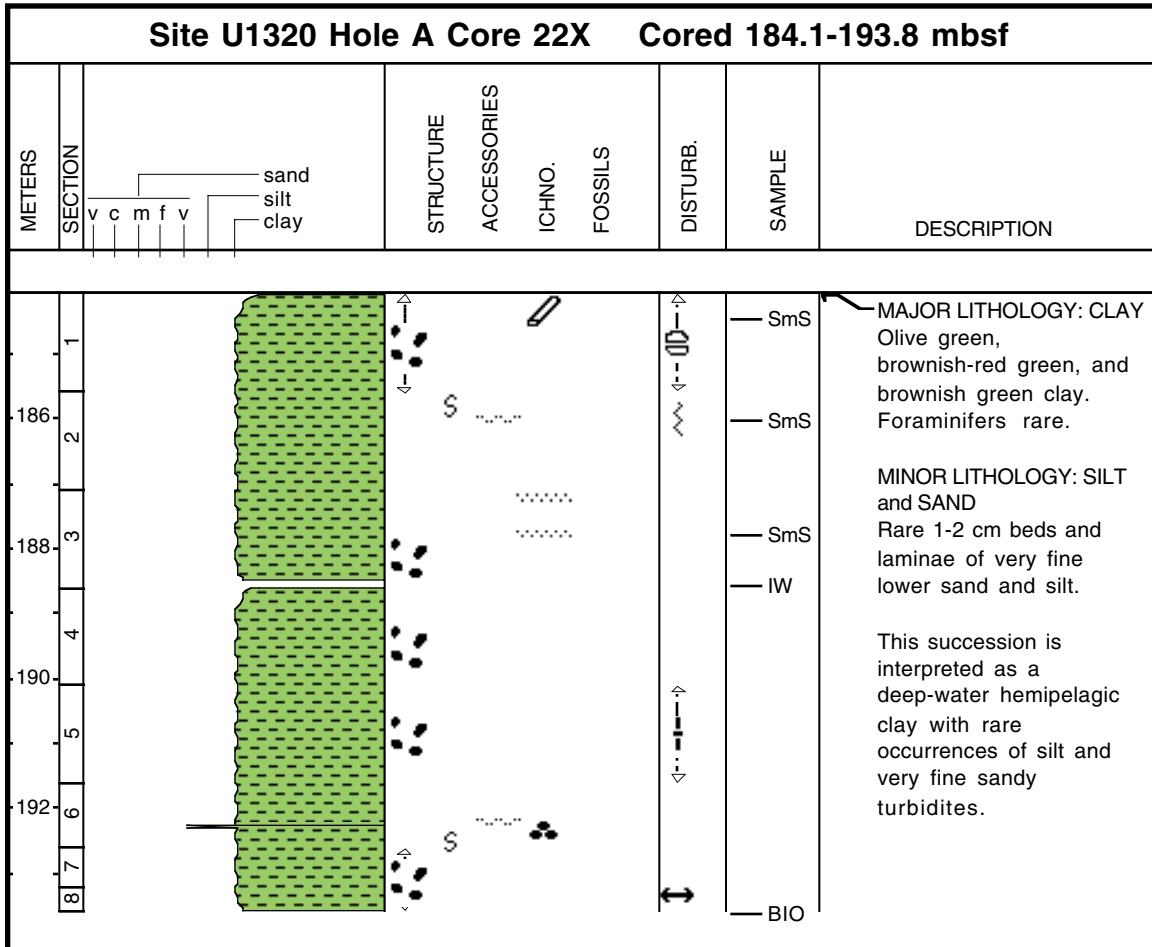


Core Photo

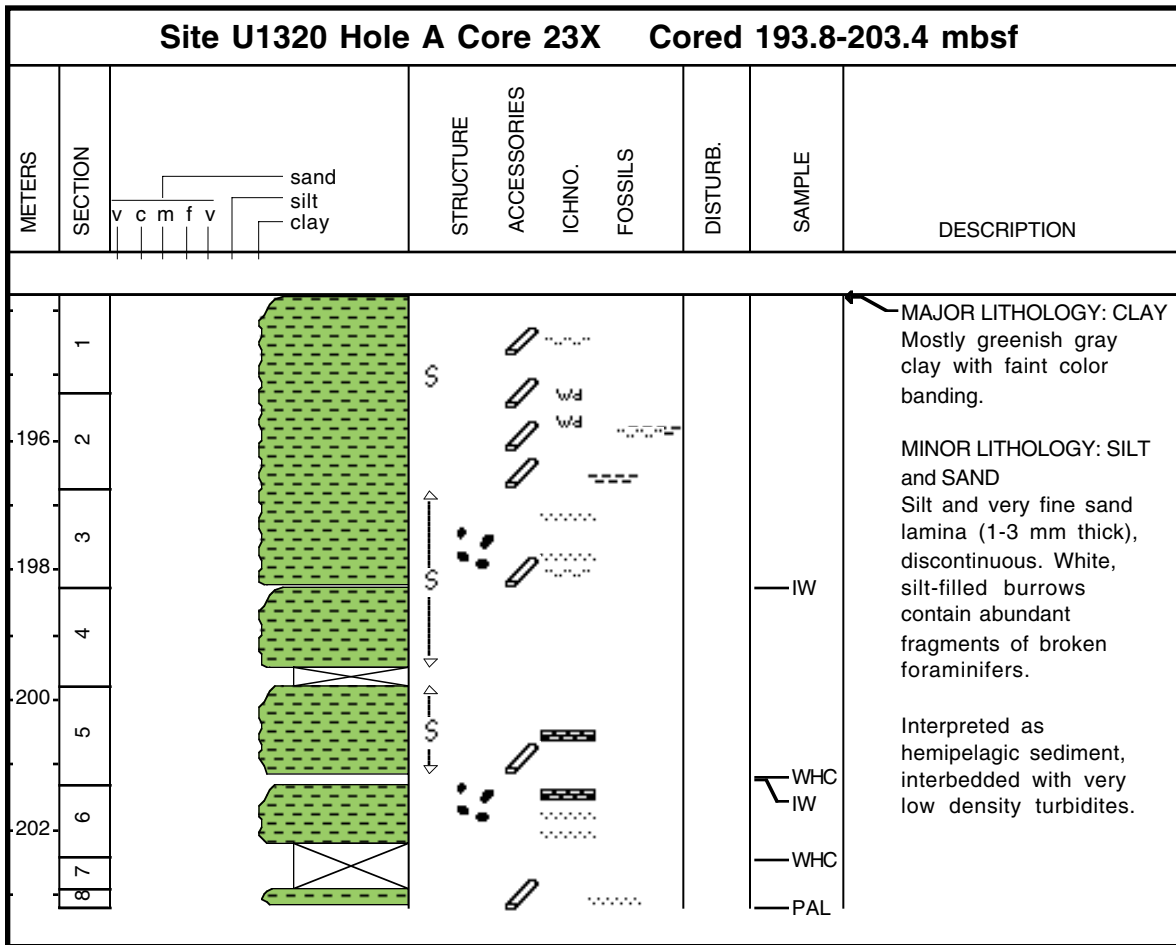
Site U1320 Hole A Core 21X Cored 174.4-184.1 mbsf									
METERS	SECTION		STRUCTURE	ACCESSORIES	ICHNO.	FOSSILS	DISTURB.	SAMPLE	DESCRIPTION
	v c m f v	sand silt clay							
176	1							IW WHC	<p>MAJOR LITHOLOGY: CLAY Greenish-gray and reddish-brown clay. Laminae of mud.</p> <p>Interpreted as hemipelagic clay.</p>



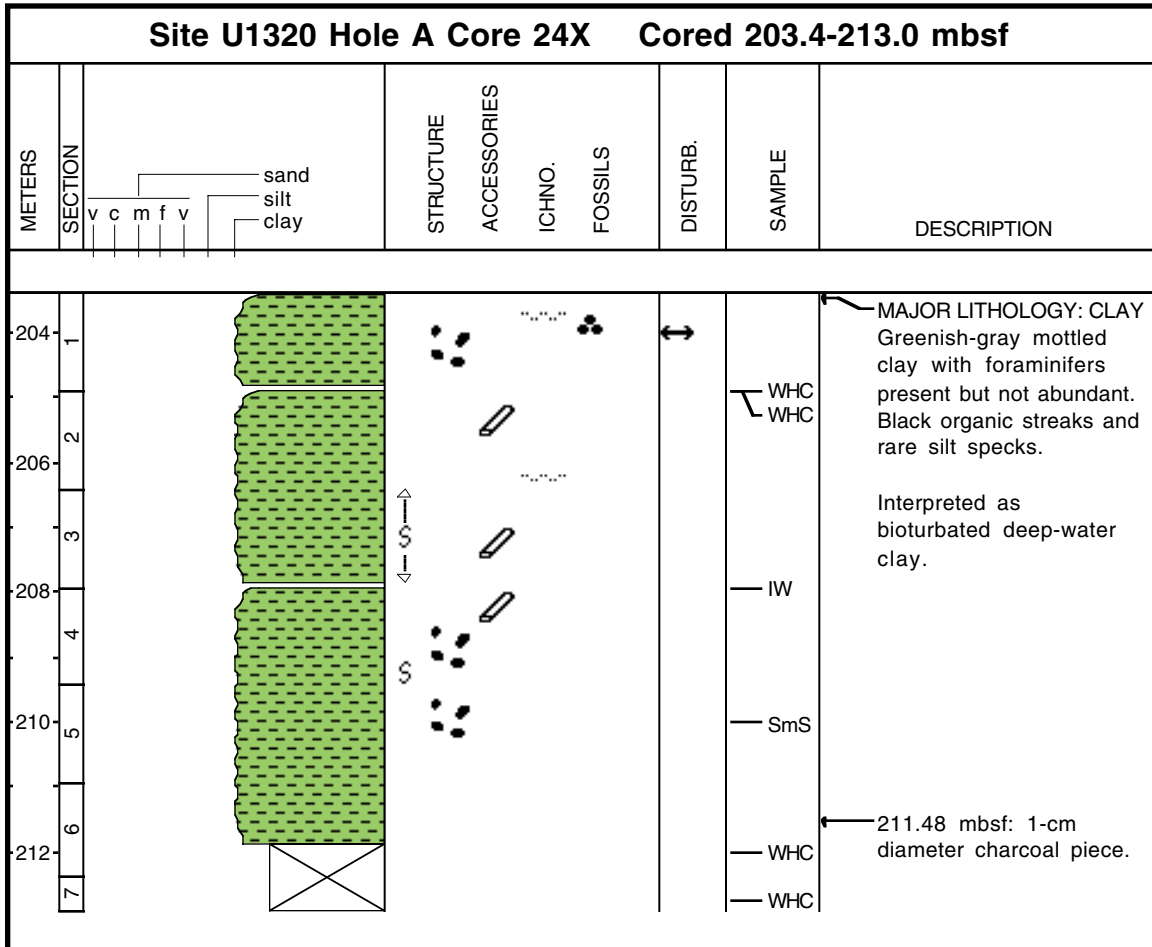
Core Photo



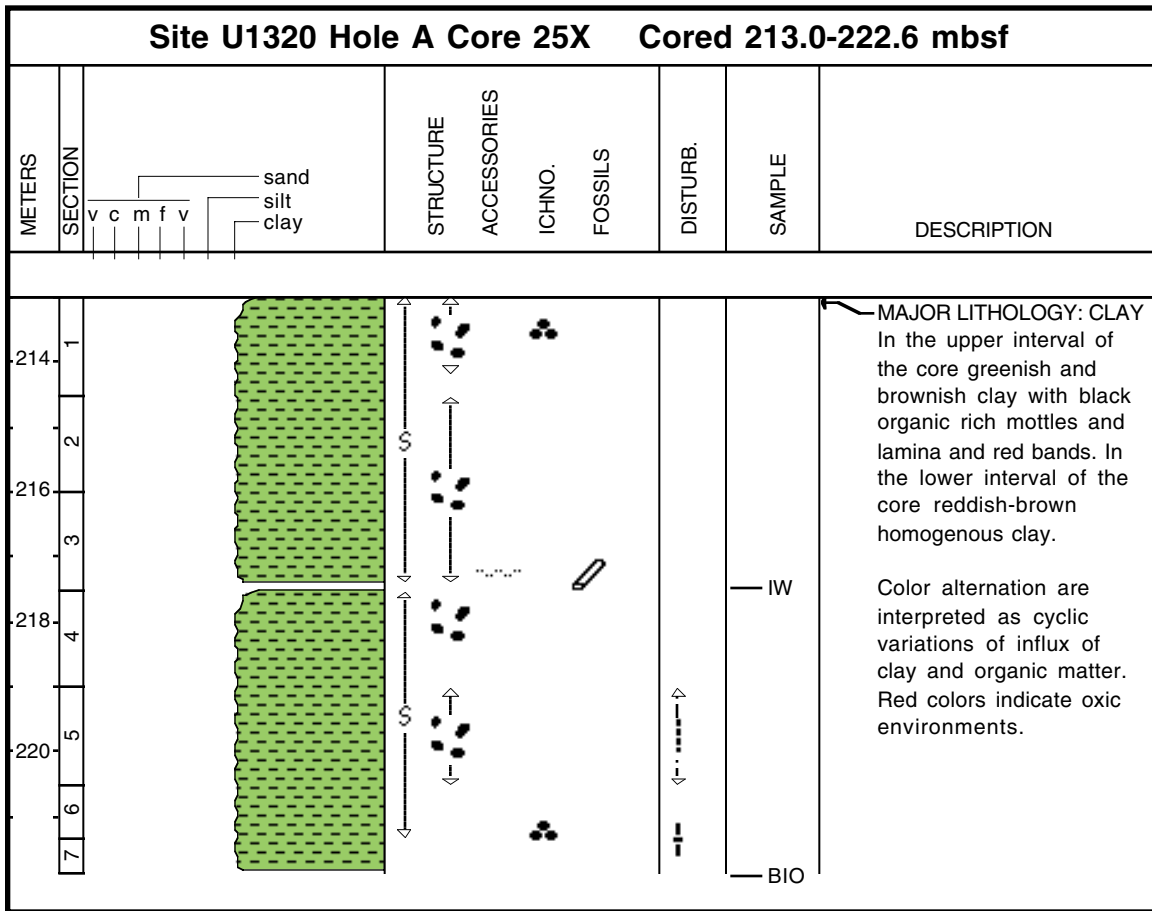
Core Photo



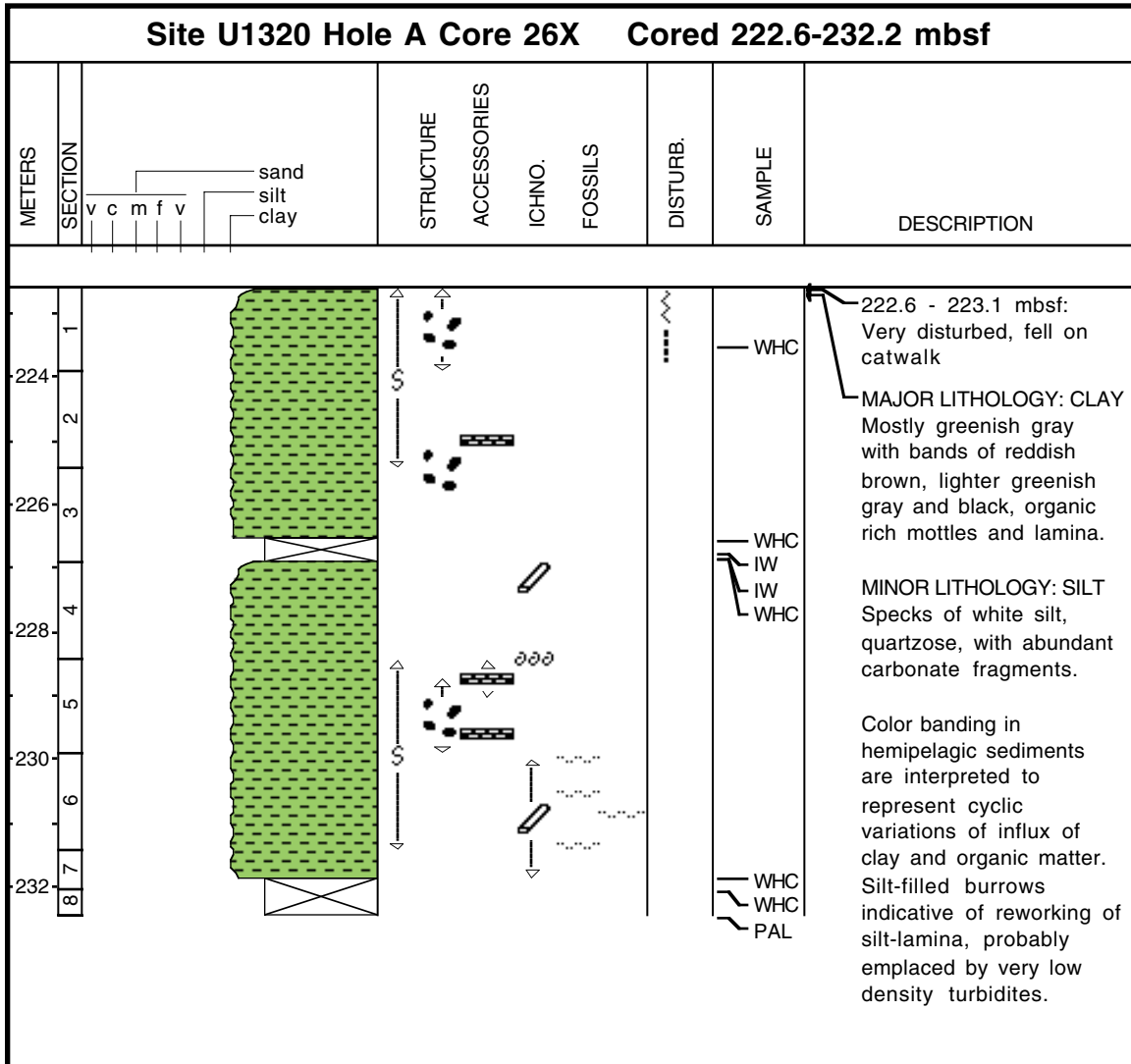
Core Photo



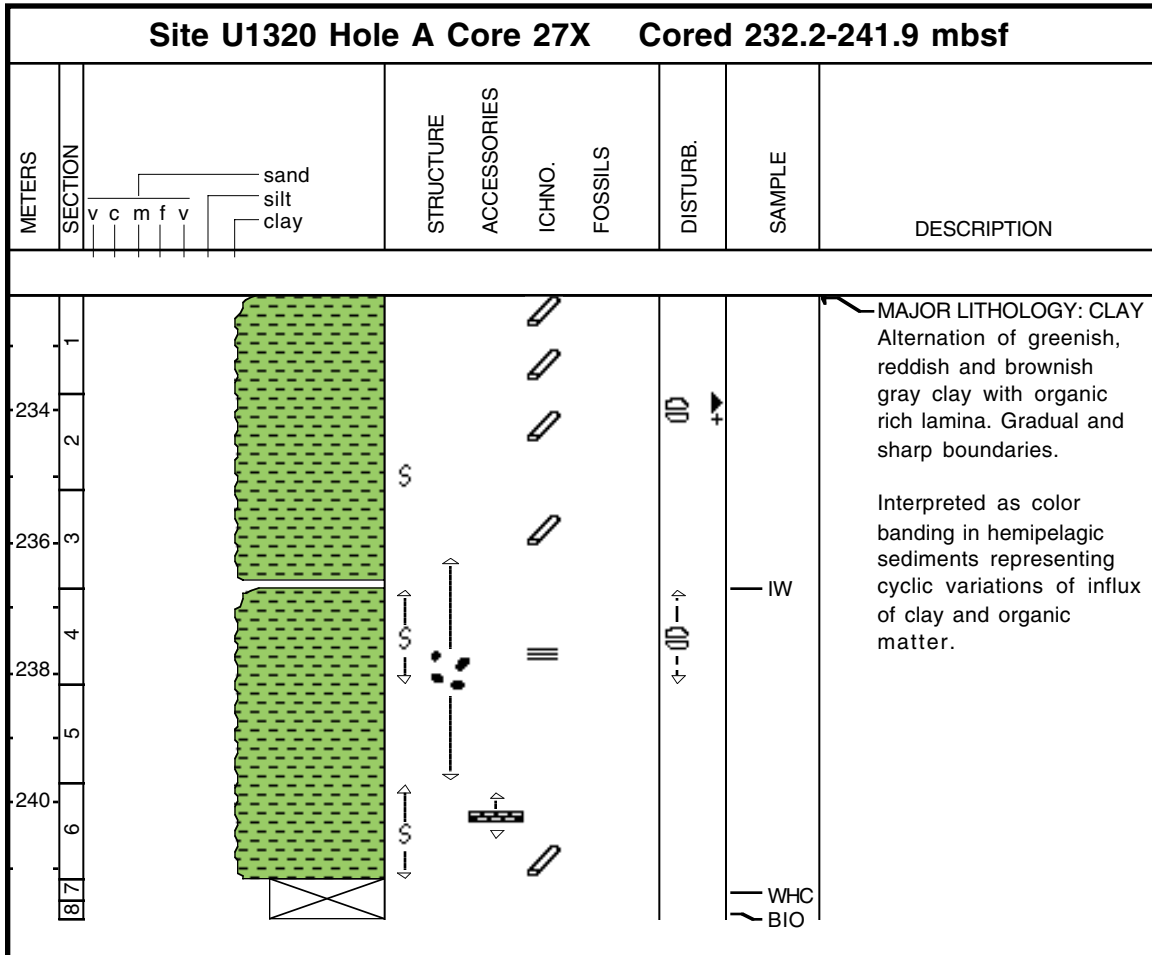
Core Photo



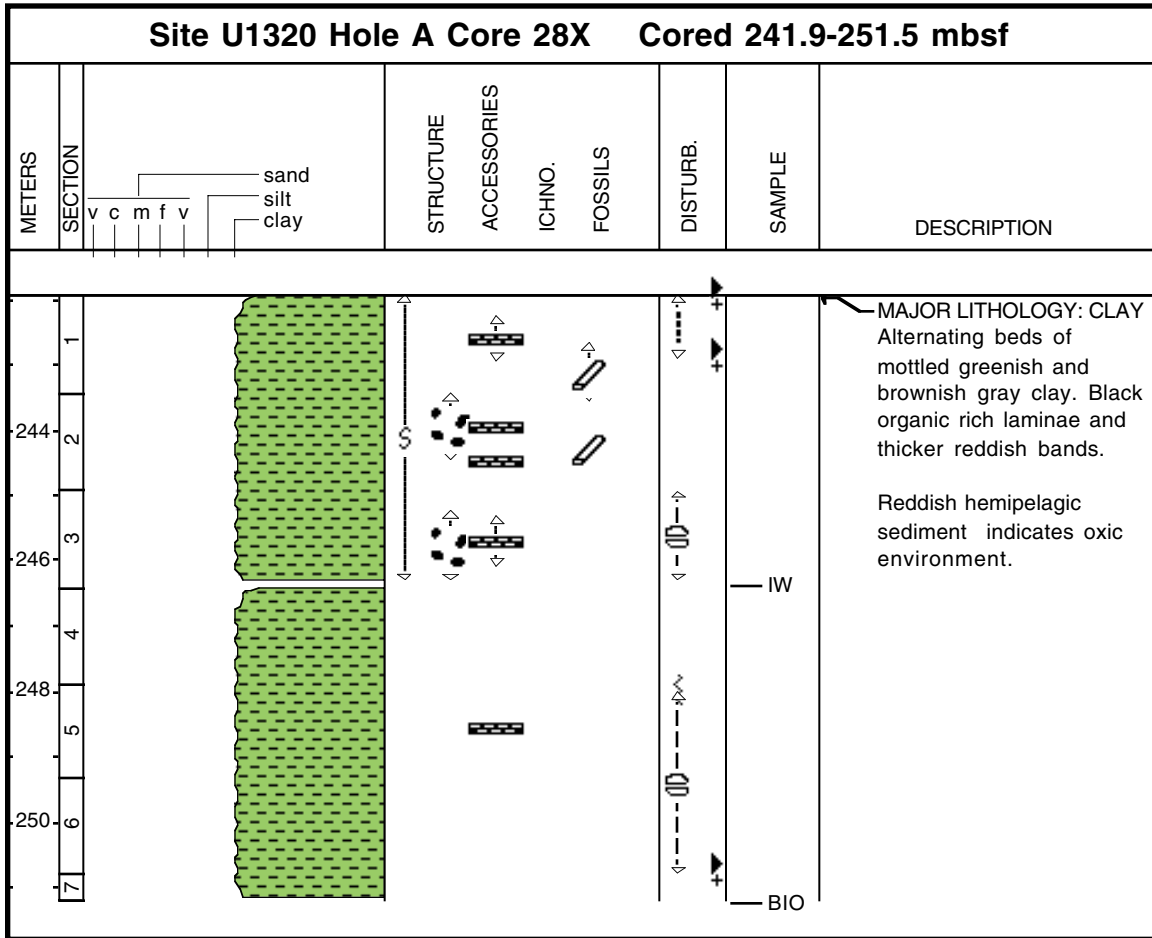
Core Photo



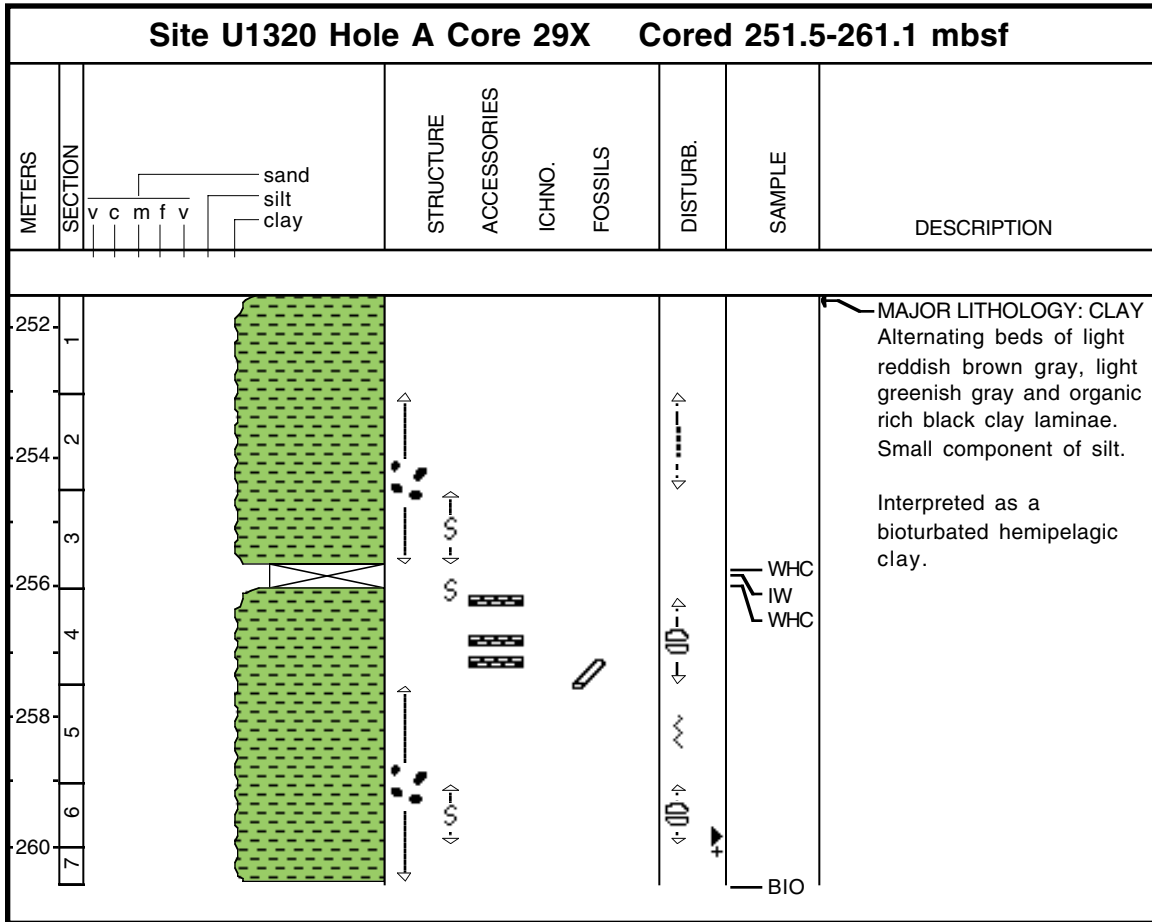
Core Photo



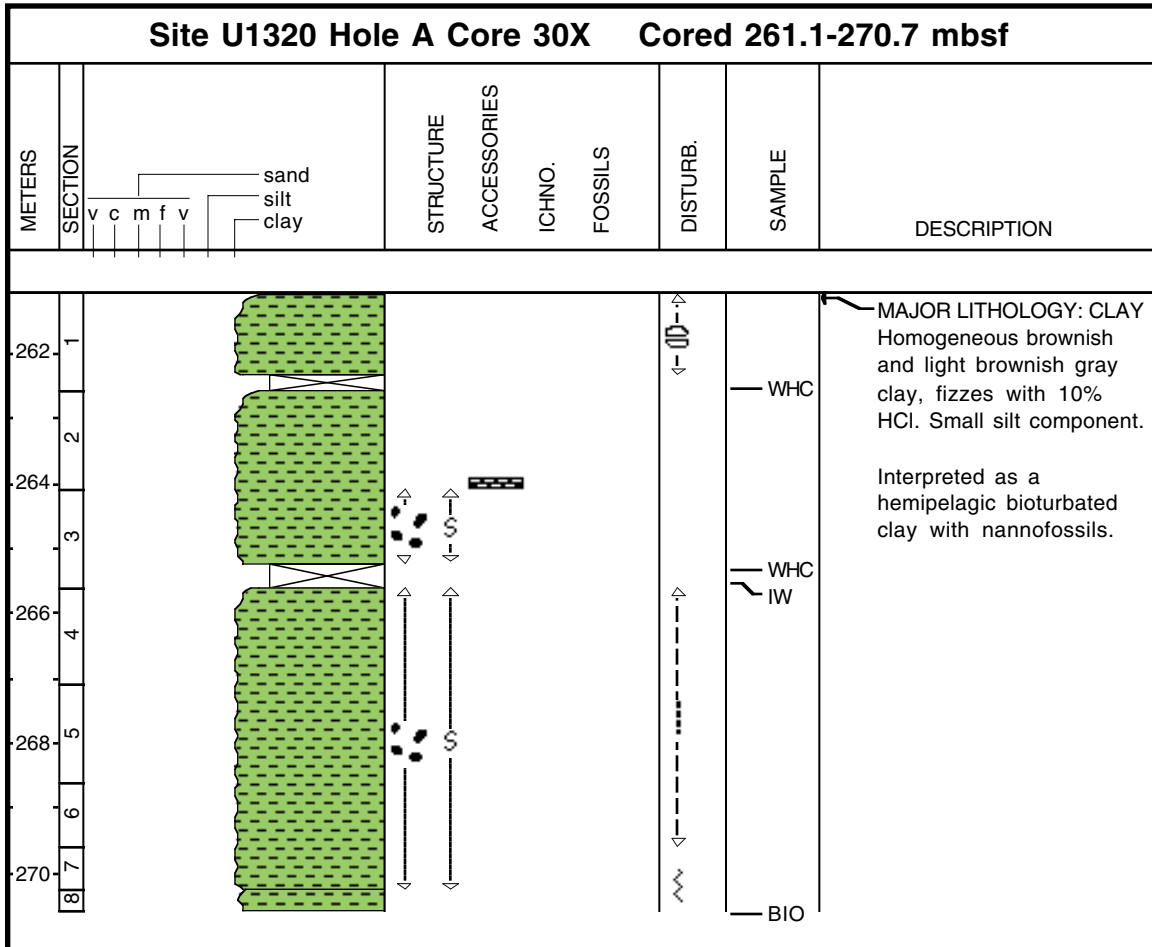
Core Photo



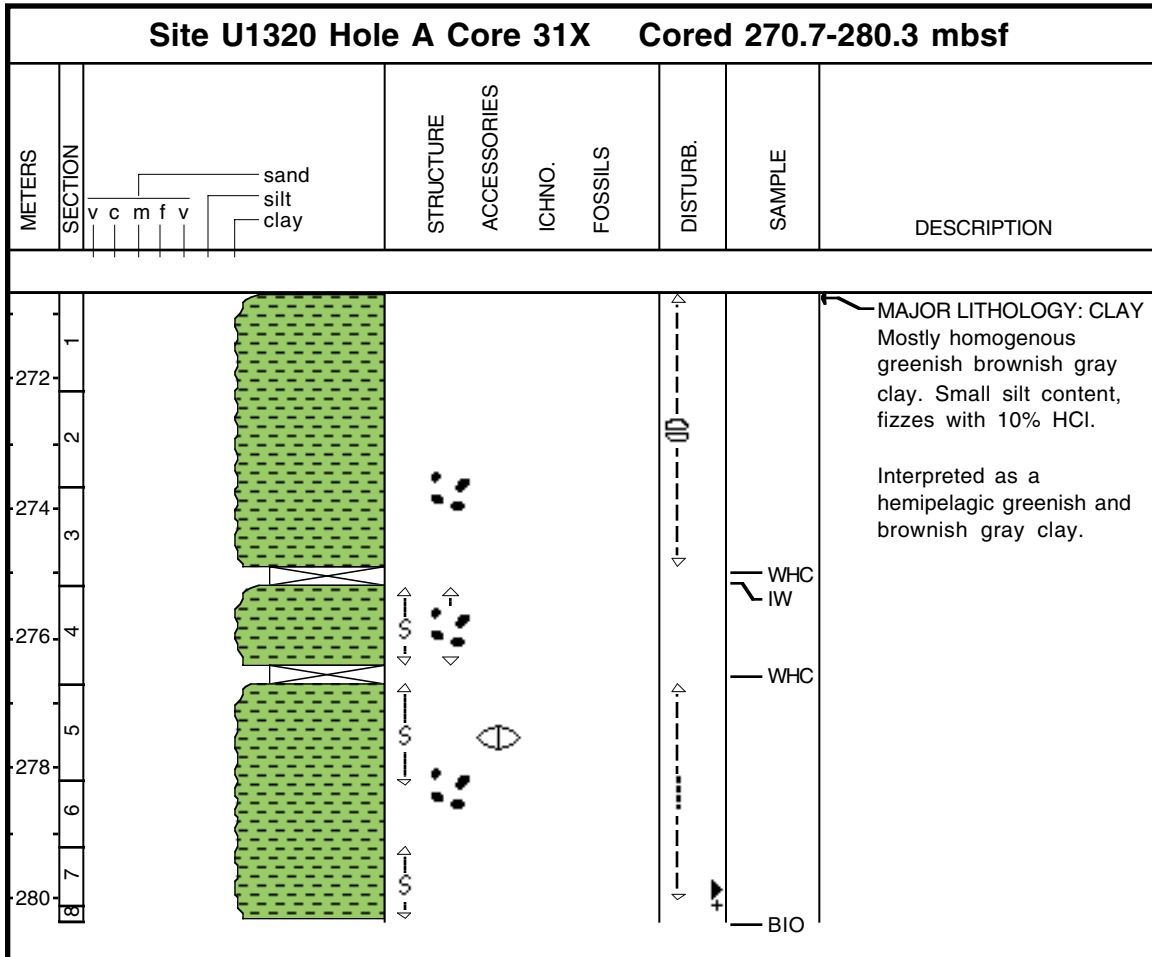
Core Photo



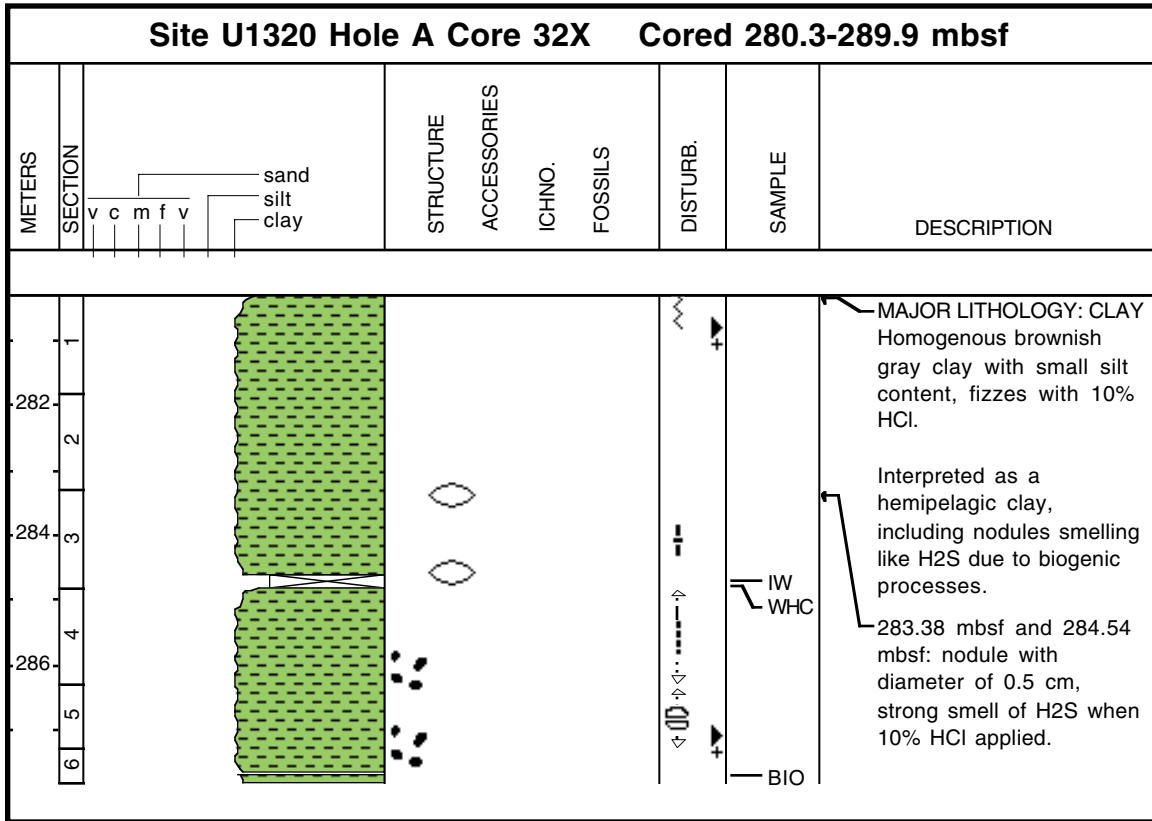
Core Photo



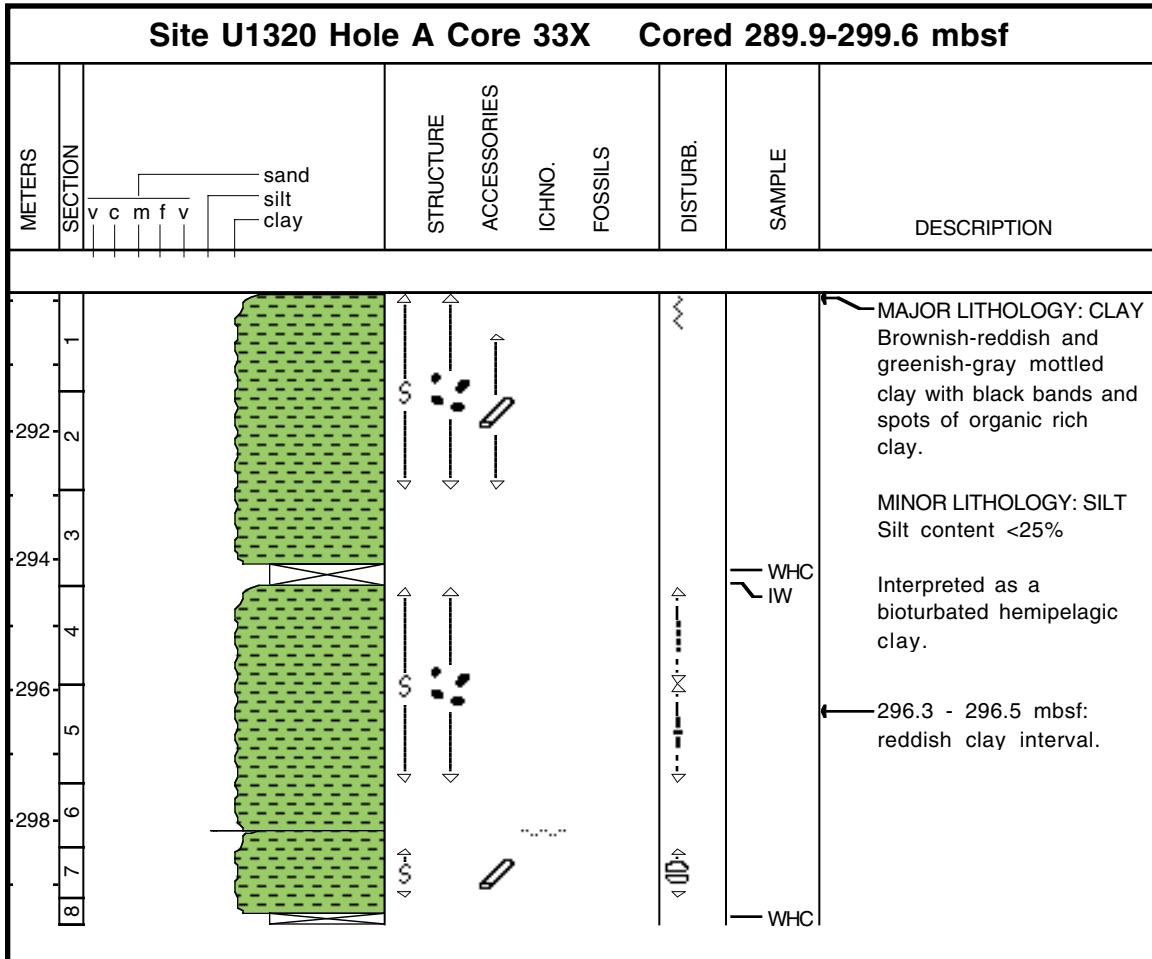
Core Photo



Core Photo



Core Photo





Leg	Site	H	Cor	T	Sc	Top (cm)	Depth (mbsf)	Lithology	Texture			Minerals										Biogenic							Remark						
									Sand	Silt	Clay	Quartz	Feldspar	Carbonate	Chlorite	Clay mineral	Mica	Calcite	Glauconite	Amphibole	Opaques	Volcanic glass	Foraminifers	Diatoms	Radiolarians	Nannofossils	Sponge spic	Organic debris		Silicoflagellates					
308	1320	A	1	H	2	65	2.15	D			D	P					D																		greenish clay
308	1320	A	1	H	3	65	3.65	D		R	D	R					D																	greenish clay	
308	1320	A	5	H	4	48	37.98	D		A	D	A		C		A	P															P	black mud		
308	1320	A	6	H	1	62.5	43.13	D	P	D	A	A	P	C		C																P	black silt		
308	1320	A	6	H	2	63	44.63	D		C	D	P		P		D																	mottled gray clay		
308	1320	A	12	X	1	60.5	88.51	D		C	D	C				D																	dark gray clay		
308	1320	A	12	X	2	9	89.49	D		C	D	C		C		D		P															dark gray clay		
308	1320	A	12	X	3	63	91.53	D	P	D	C	D		P		C				P													disturbed dark silt		
308	1320	A	14	X	1	117	108.27	D		C	D	P		C		D																	greenish gray clay		
308	1320	A	14	X	3	83	110.93	D		A	A	D				A	R																black clay layer		
308	1320	A	16	X	4	65	131.45	D		R	D	R				D		R															clay with abundant foraminifers		
308	1320	A	17	X	2	108	137.78	M	C	D	C	D		C																			discontinuous silt laminae		
308	1320	A	17	X	2	113	137.83	M	P	D	C	D		P																			continous silt laminae		
308	1320	A	17	X	5	150	142.7	M	P	D	P	D					P																greenish gray mud		
308	1320	A	17	X	6	1	142.71	M	D	C	P	P					P																greenish gray mud and brownish greenish gray mud		
308	1320	A	17	X	6	72	143.42	M		D	C	P					P																white silt		
308	1320	A	17	X	6	147	144.17	D		C	D	D					C																greenish gray mud and brownish greenish gray mud		
308	1320	A	17	X	7	47	144.67	M	D	C	C	D		C		C																	slightly rounded quartz; small black burrow		
308	1320	A	17	X	CC	21	145.32	M	A	A	C	A					D																greenish gray very fine sand layer		
308	1320	A	20	X	2	144	167.74	D		A	D	A	P			A	P																silt with high clay content		
308	1320	A	22	X	1	37	184.47	M	*	D	A	C				D		C							P	P							white burrow; mud		
308	1320	A	22	X	2	41	186.01	M		D	C	C		P	P	A		A							P	P							white burrow; silt		
308	1320	A	22	X	3	68	187.78	M		A	D	C		A		D											*						light interval mud		
308	1320	A	24	X	1	25	203.65	D		C	D	P		P		D																	light greenish clay		
308	1320	A	24	X	5	24	209.64	D		C	D	P		C		D																	black clay (abundant org. matter)		
308	1320	A	25	X	6	71.5	221.22	M		D	C	A		C		C										P	C						white burrow; silt		