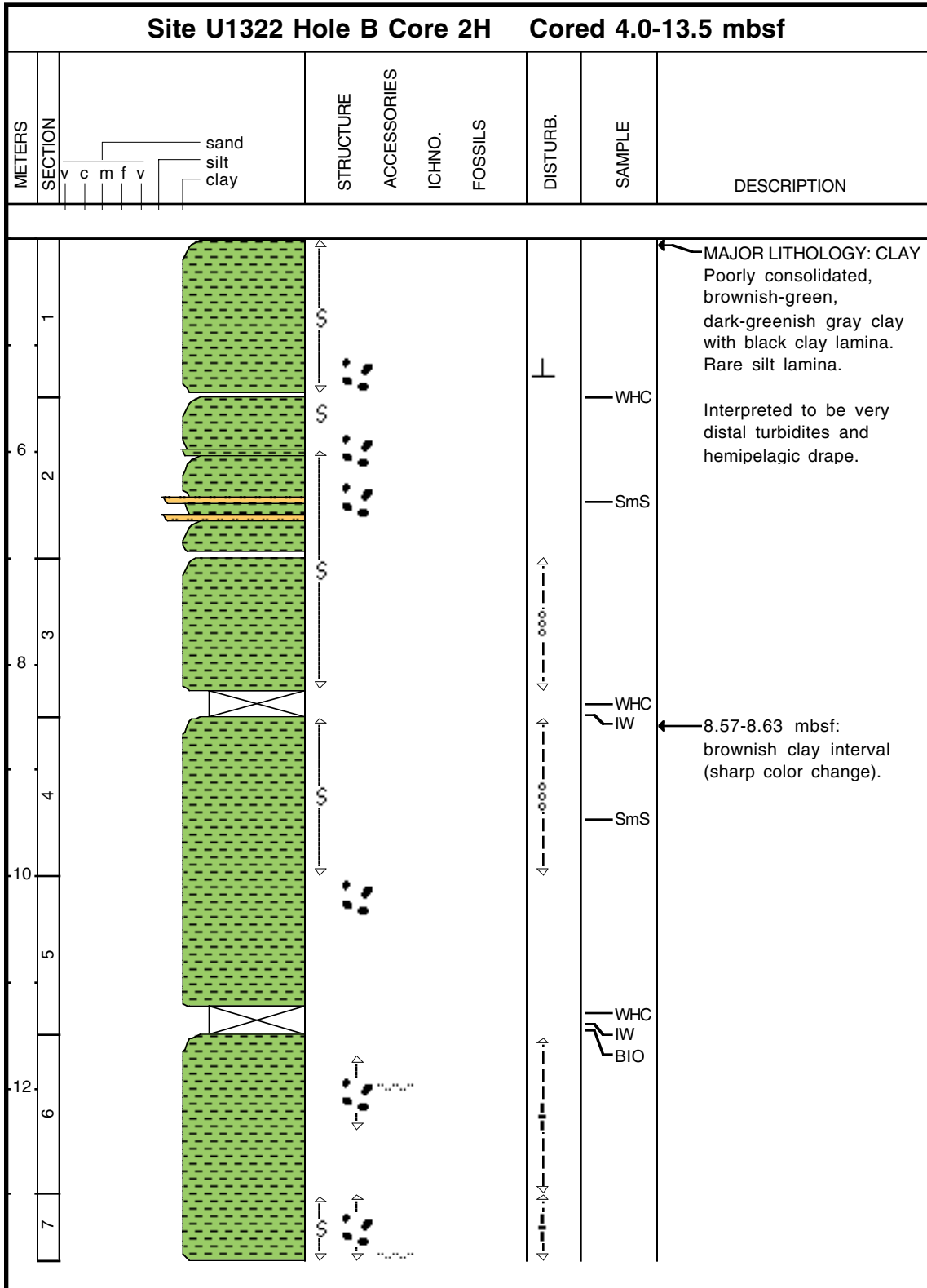
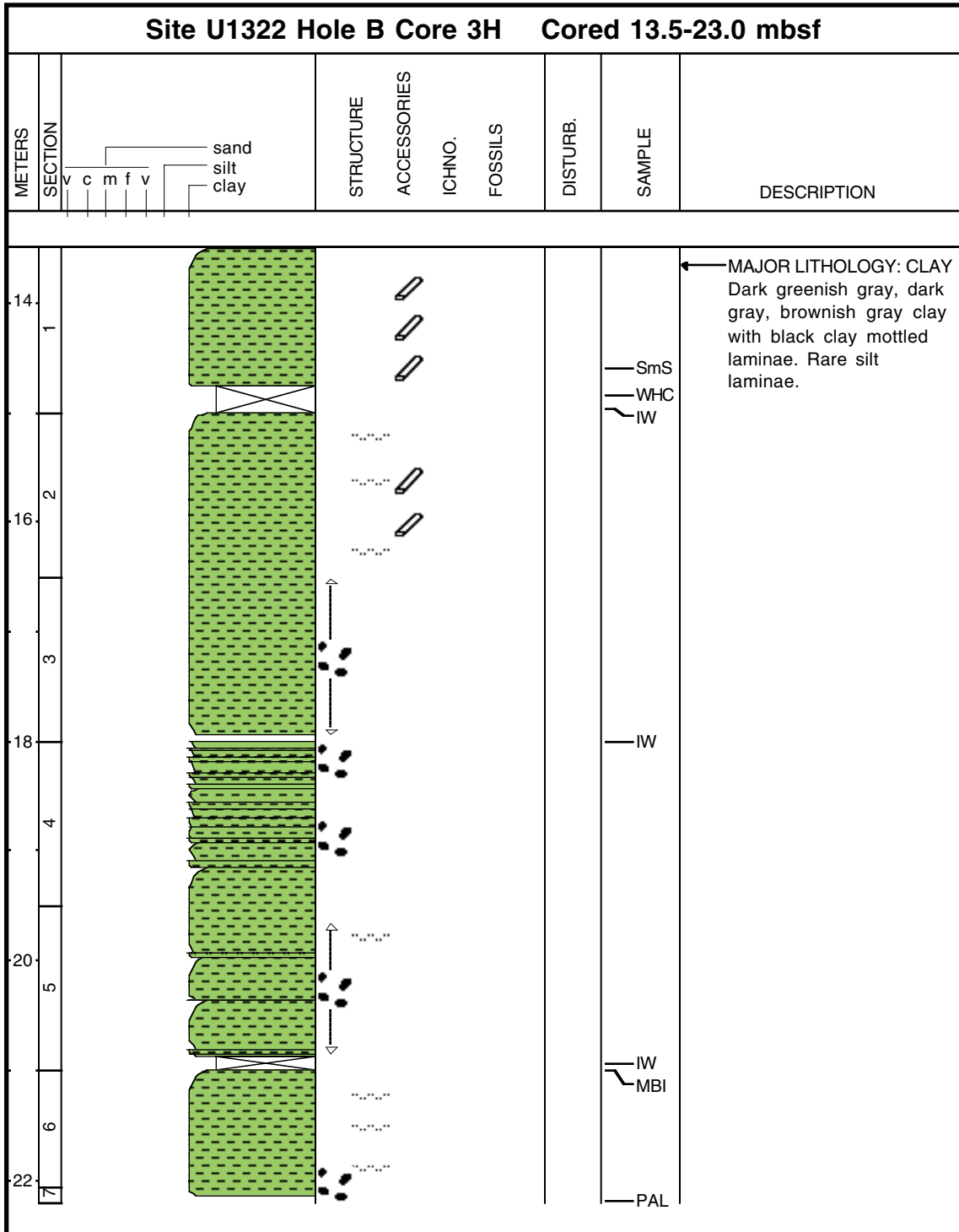


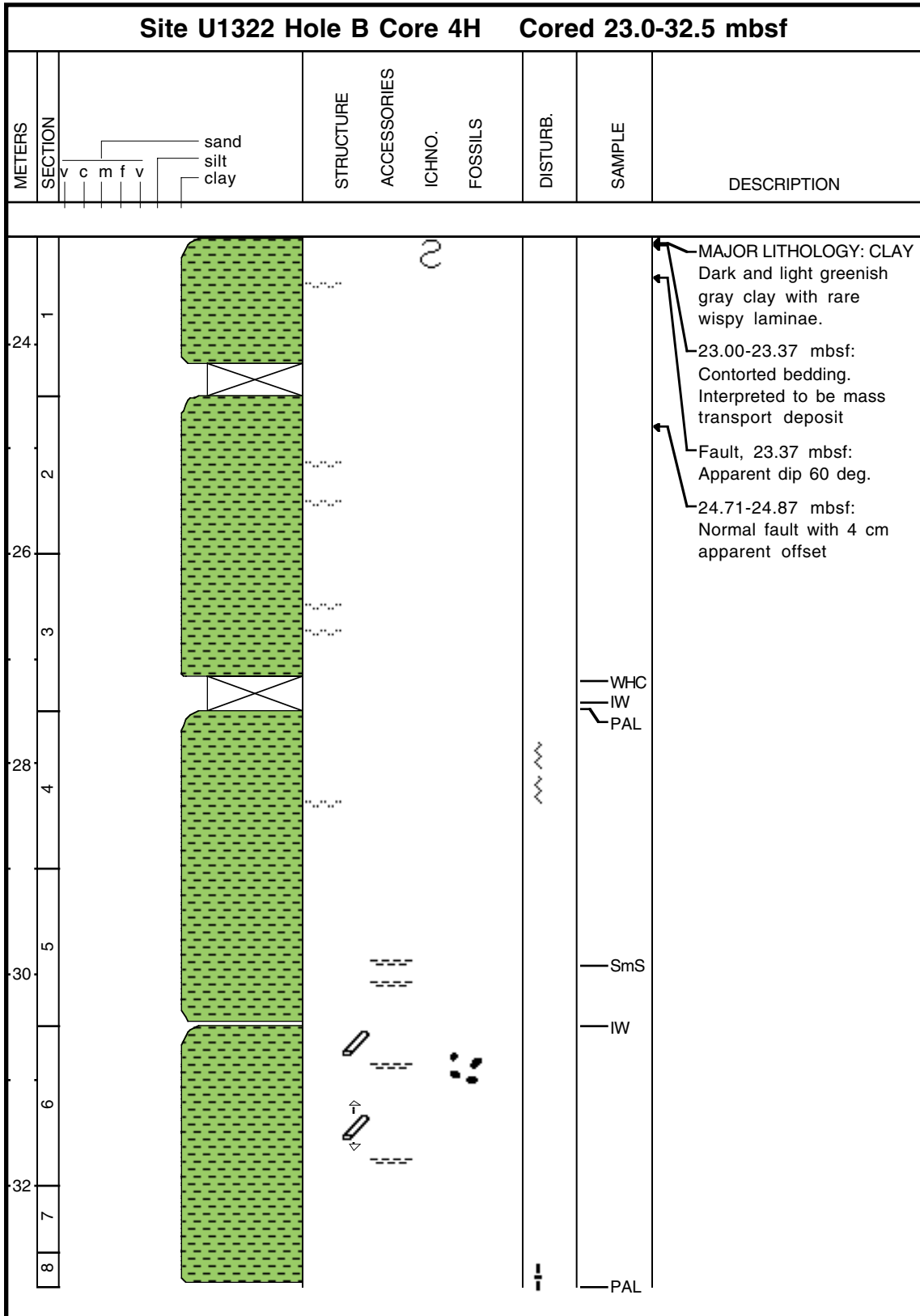
Core Photo



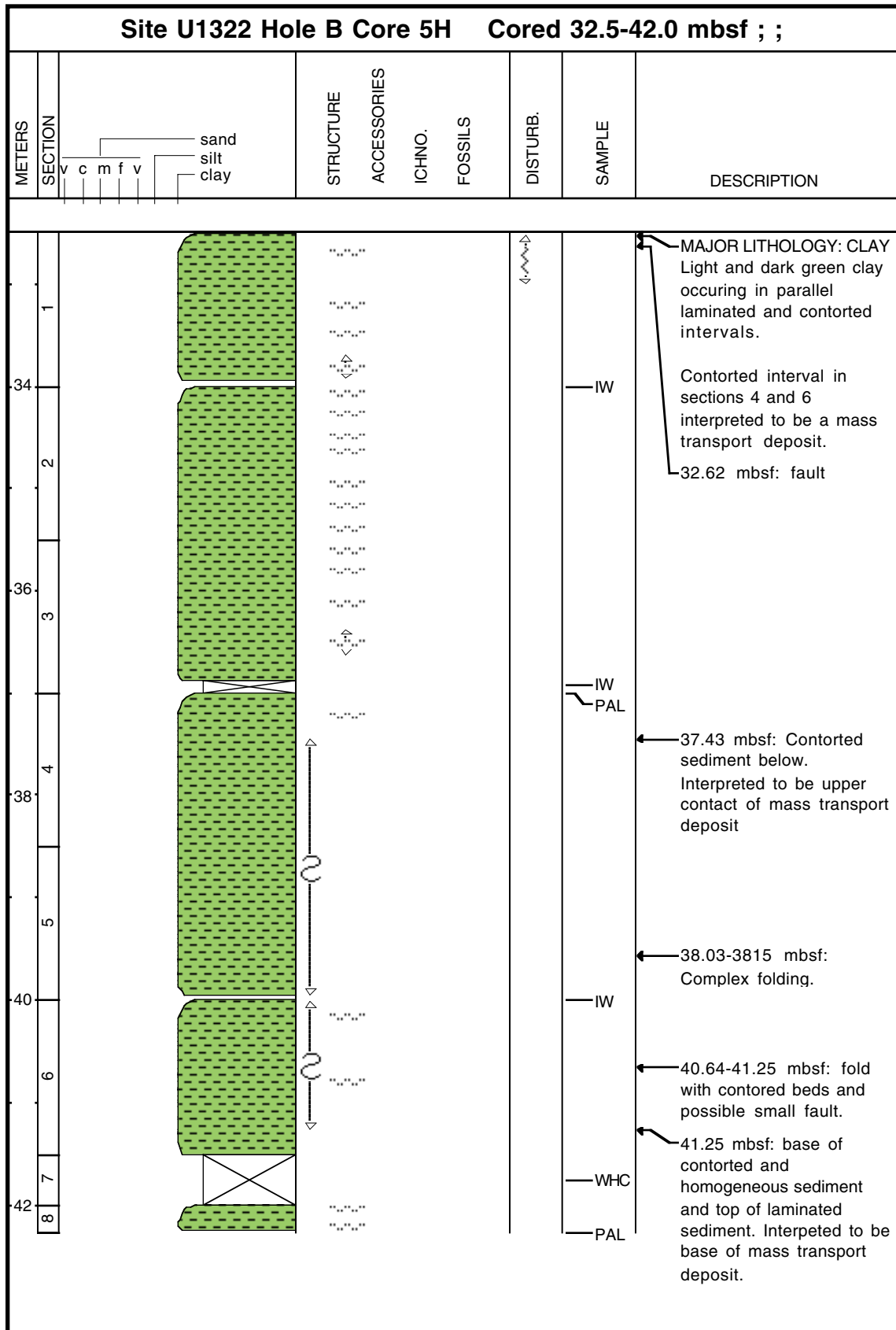
Core Photo



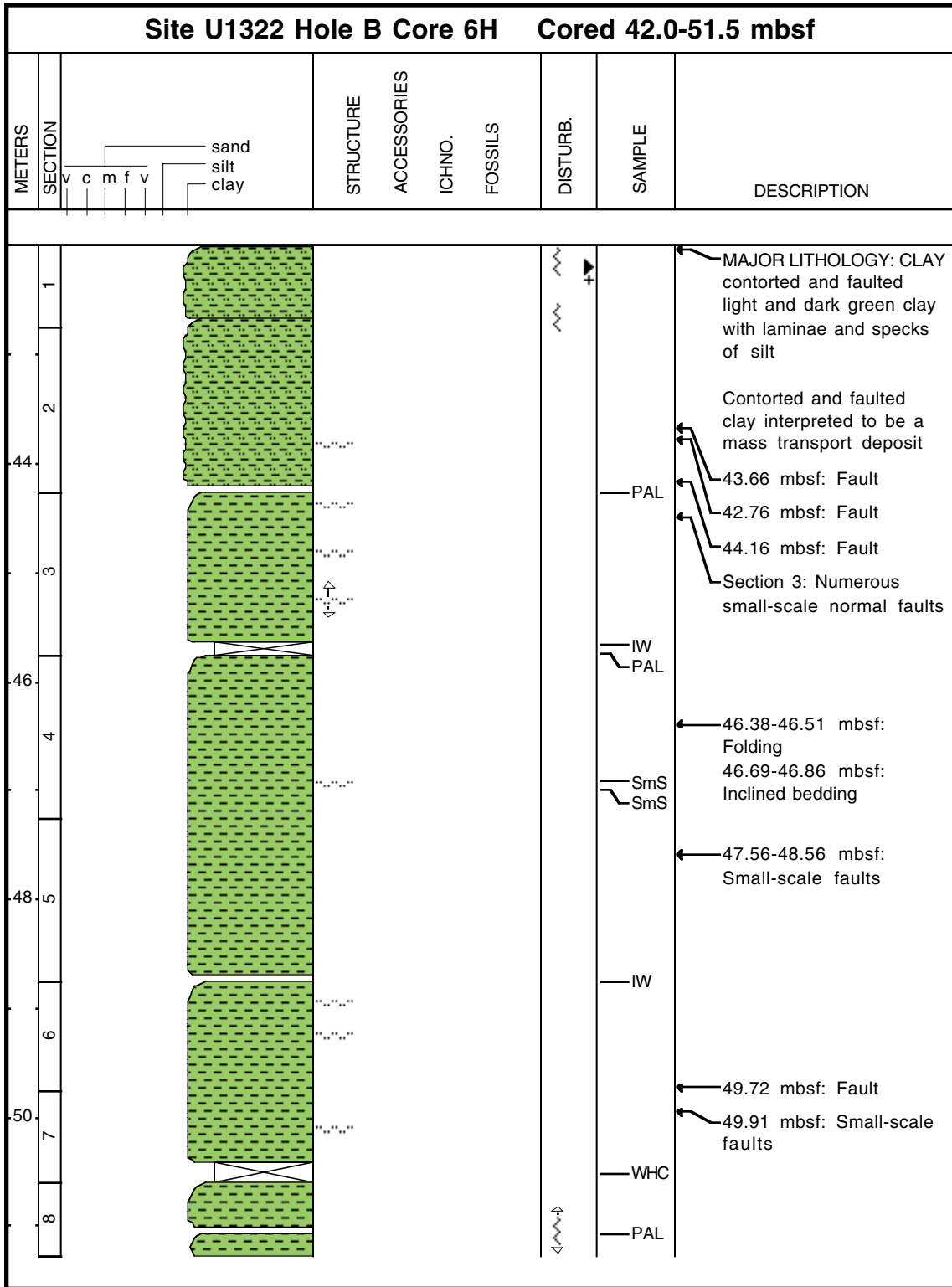
Core Photo



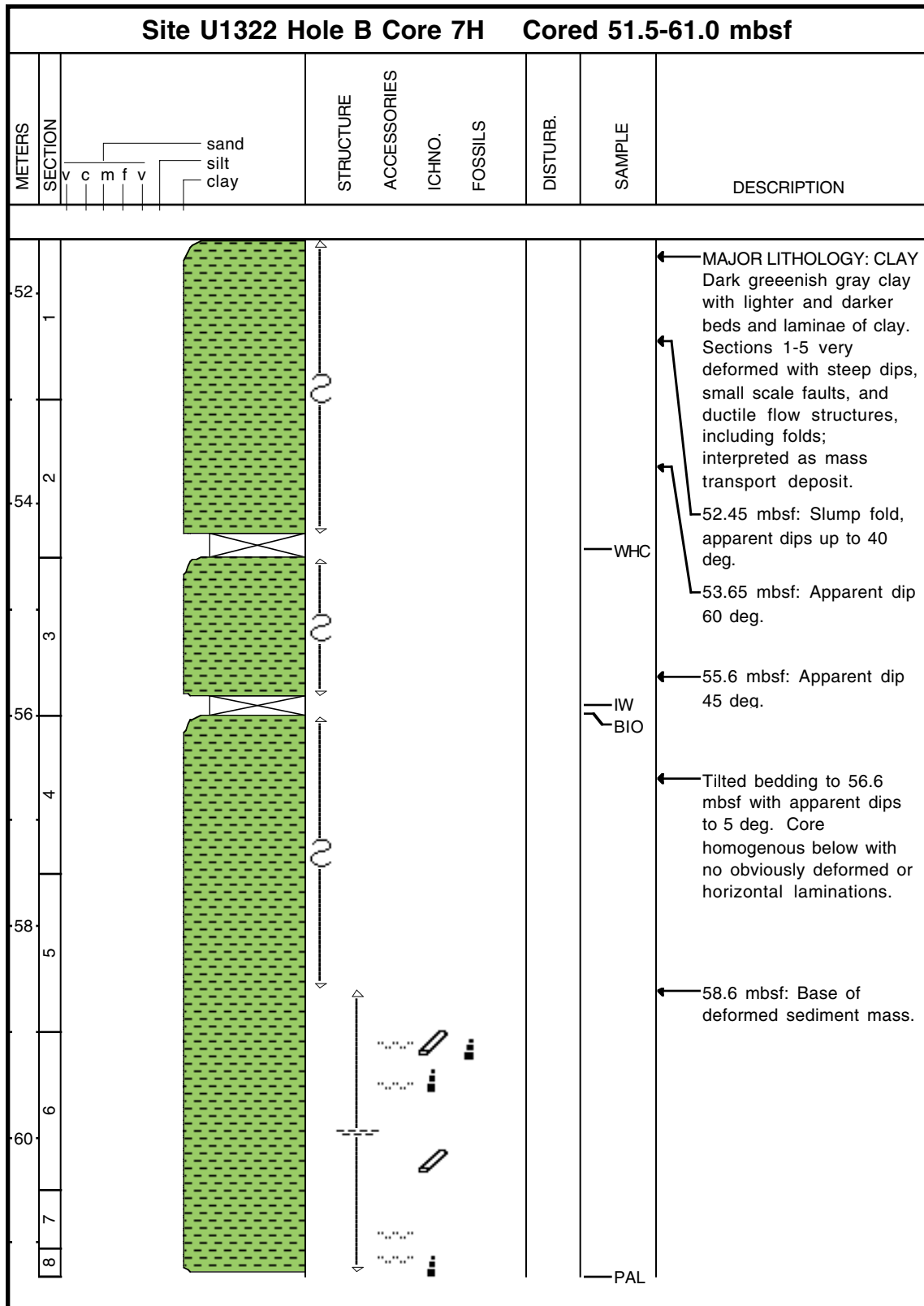
Core Photo



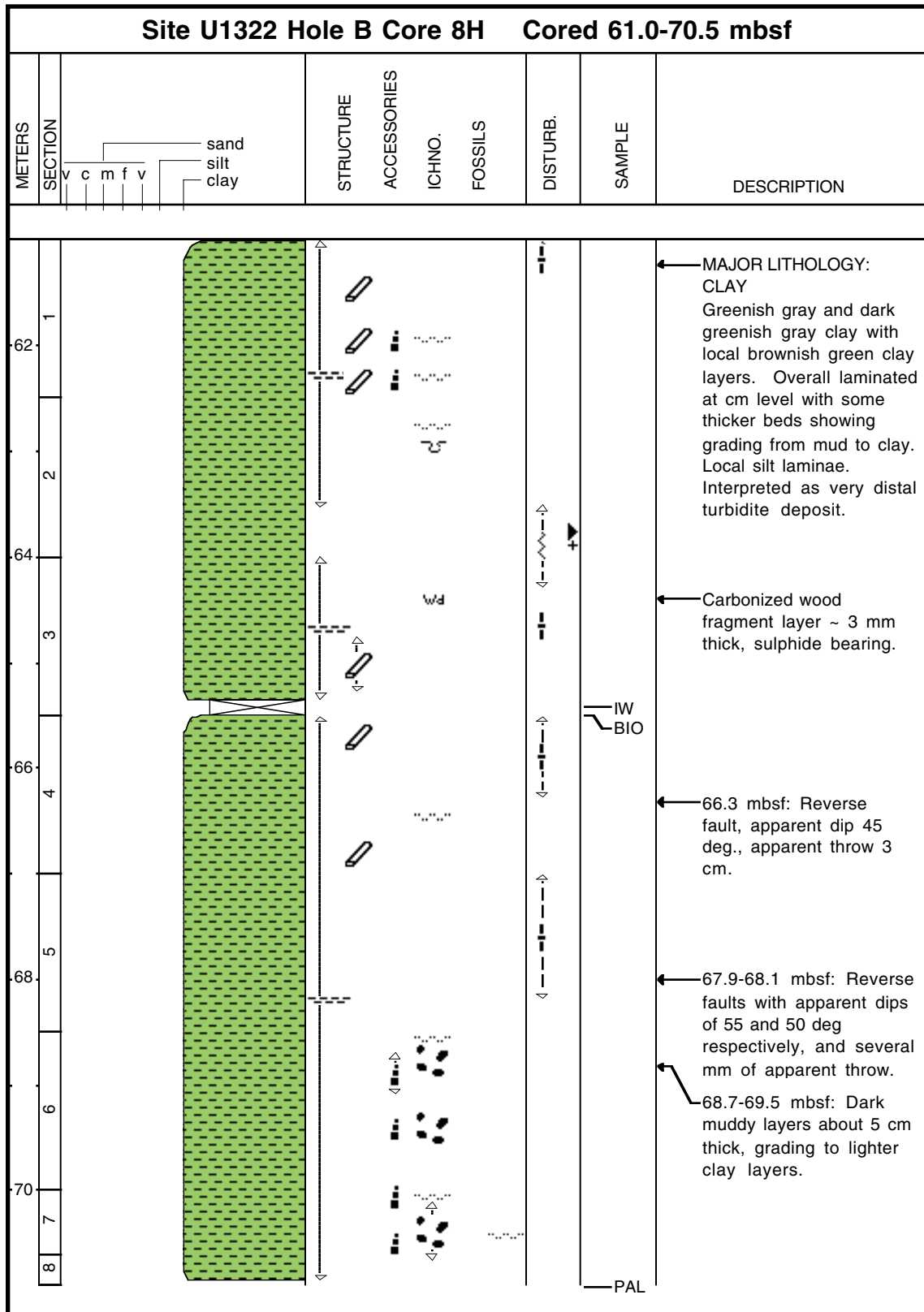
Core Photo



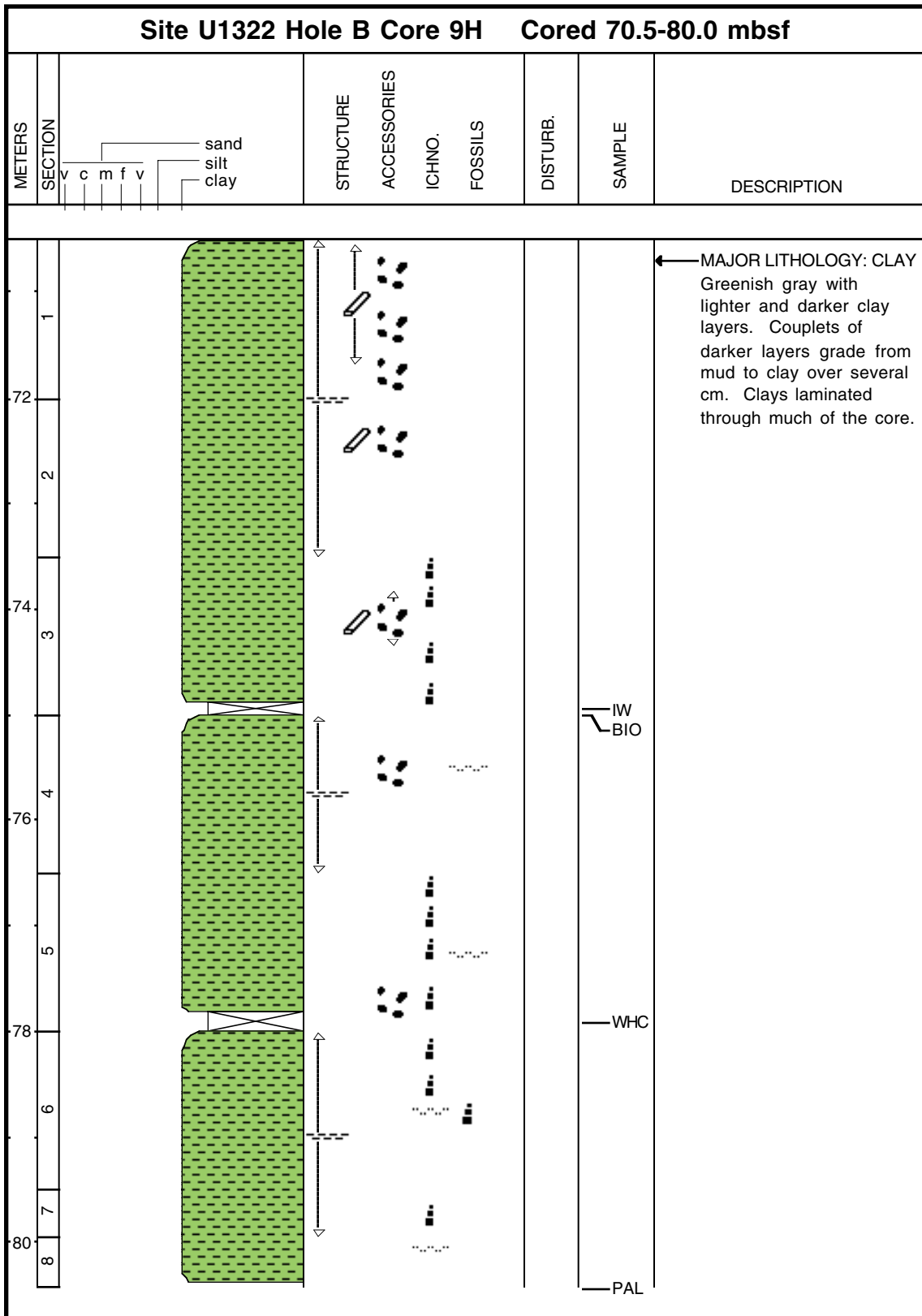
Core Photo



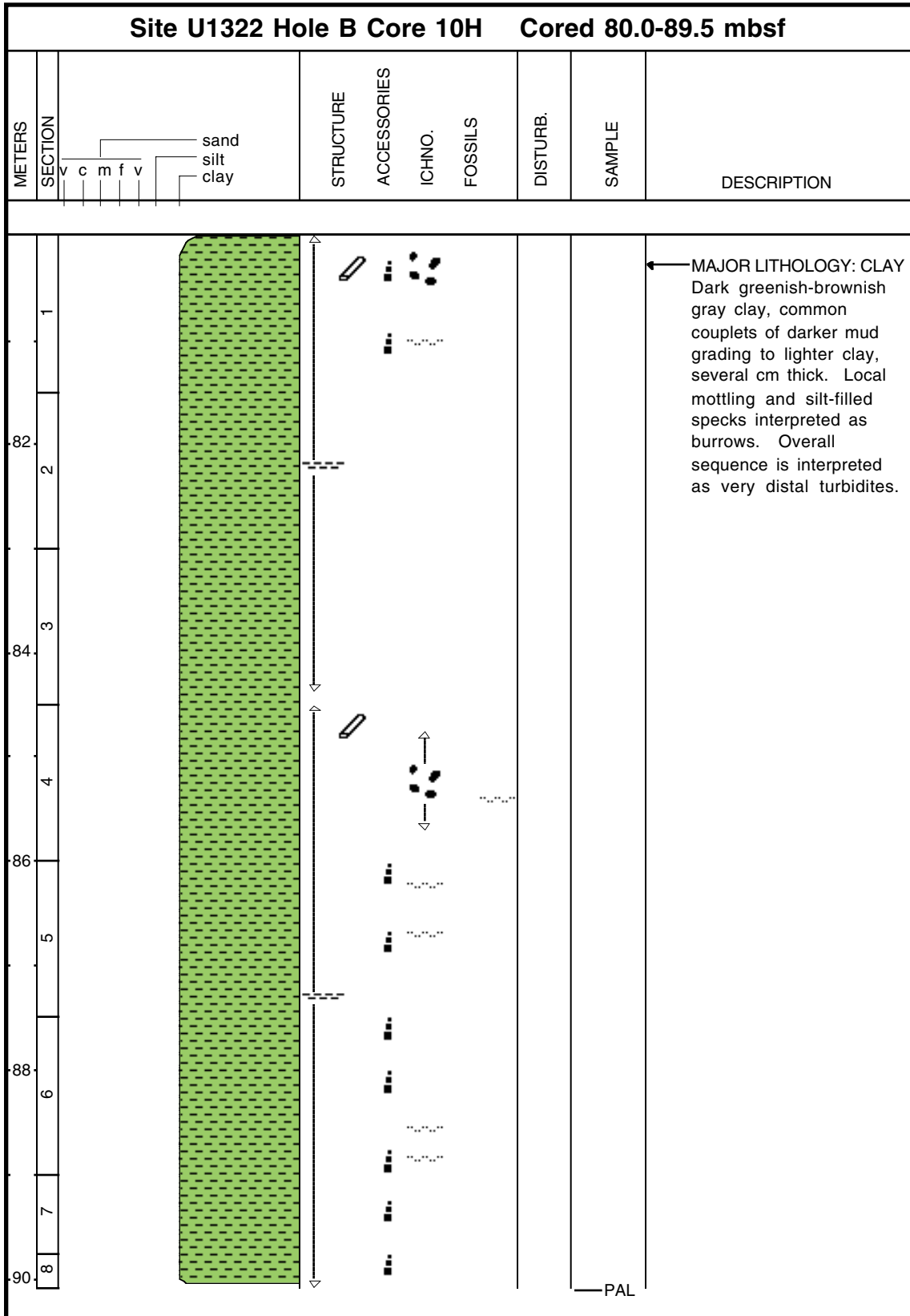
Core Photo



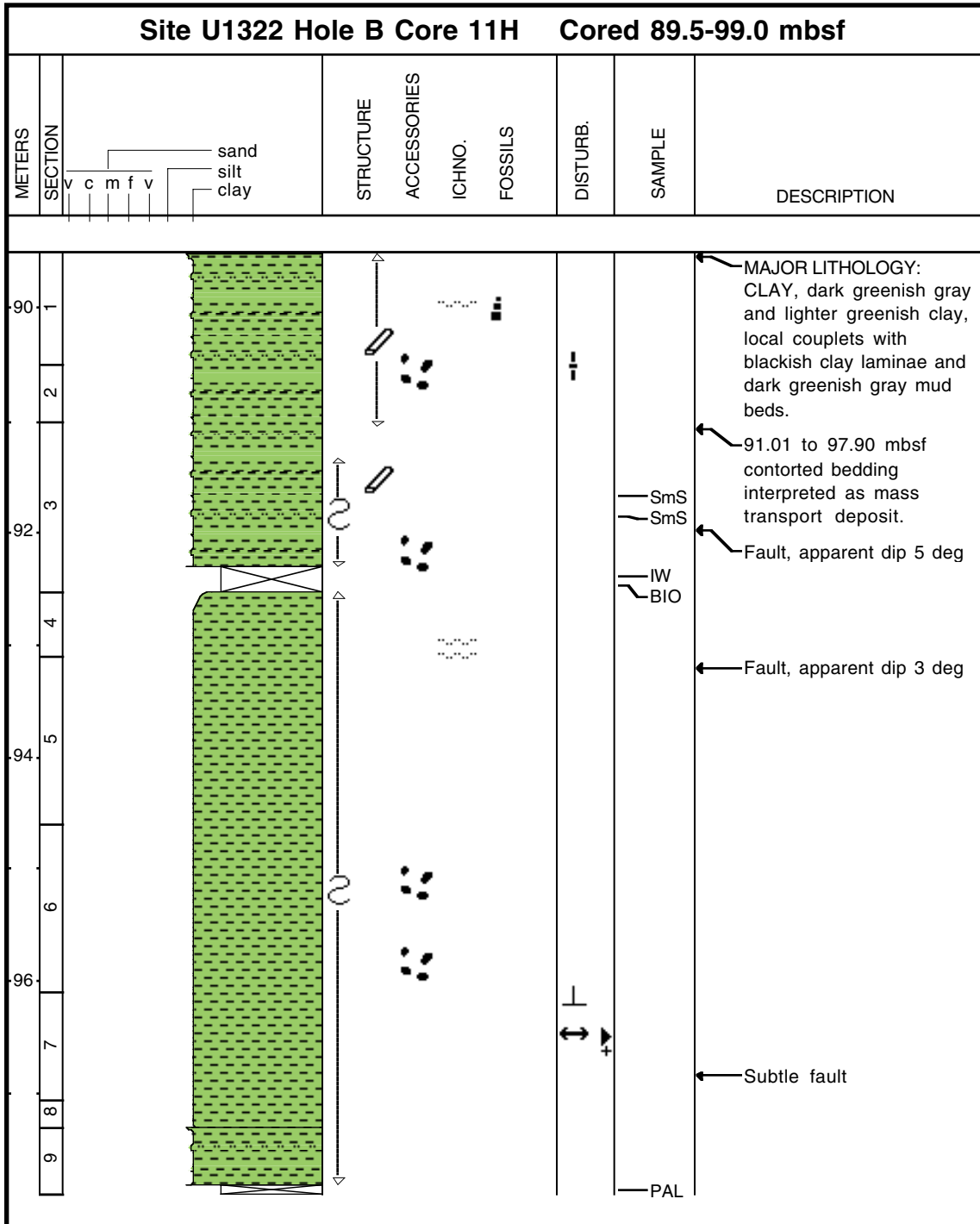
Core Photo



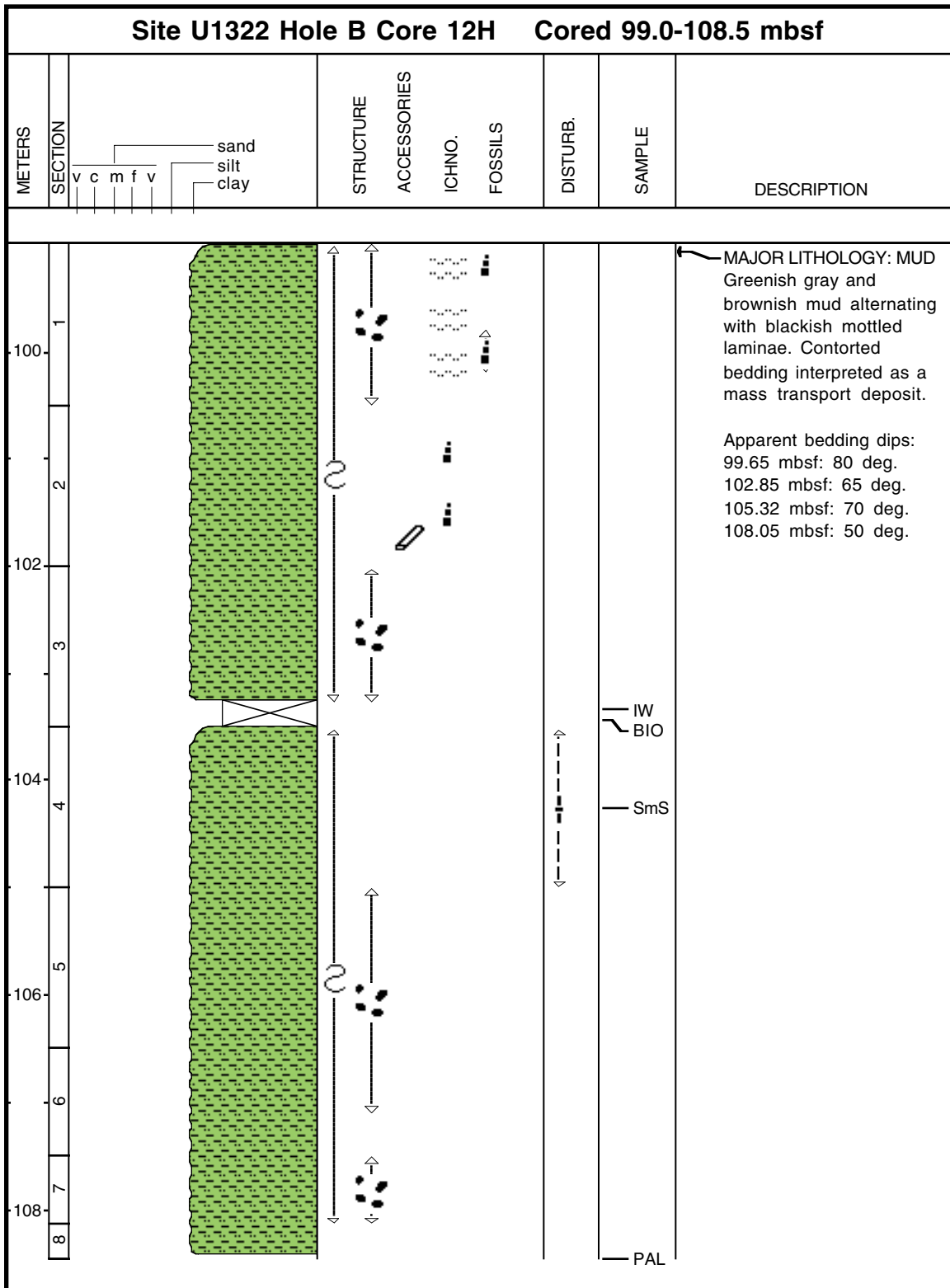
Core Photo



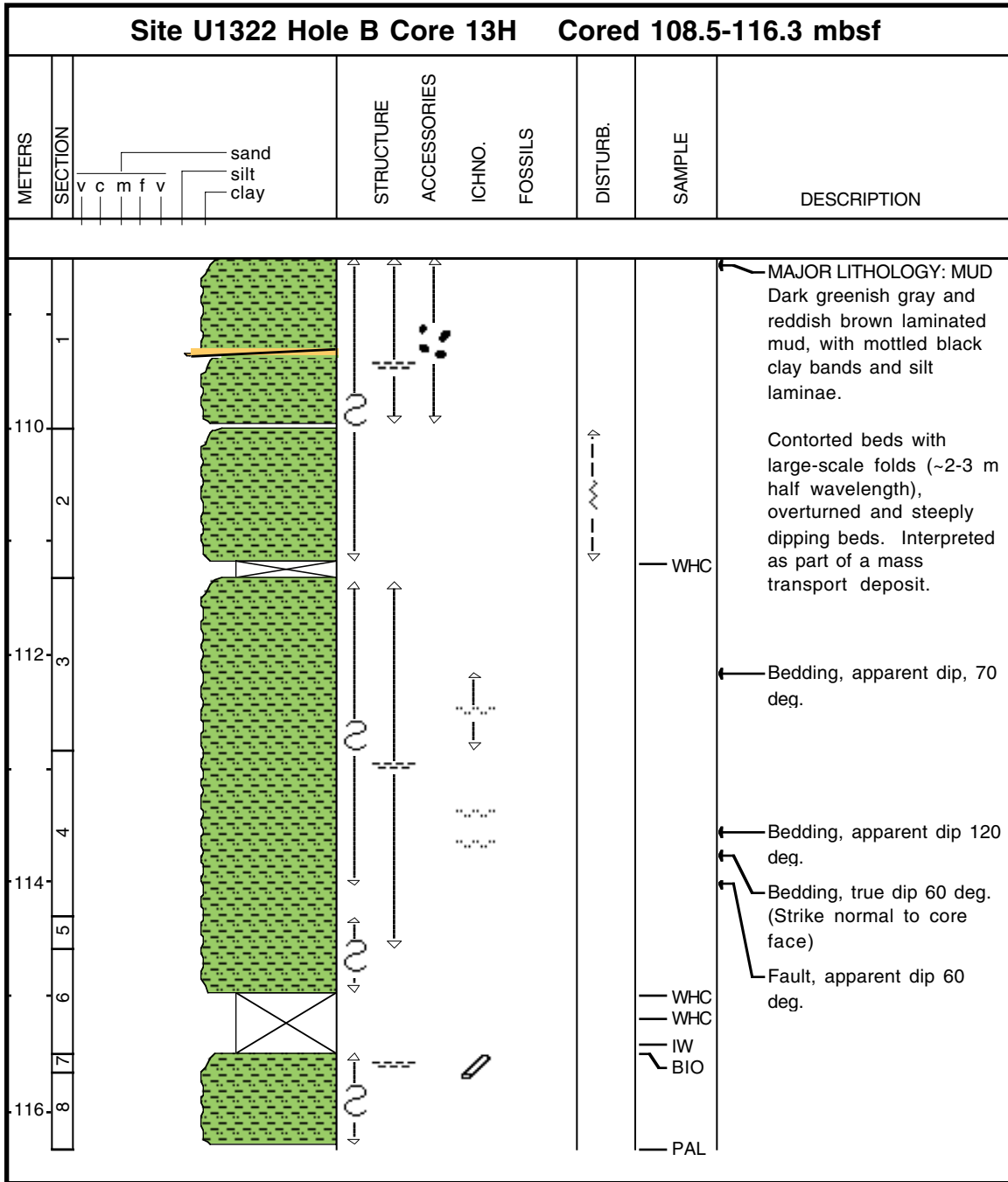
Core Photo



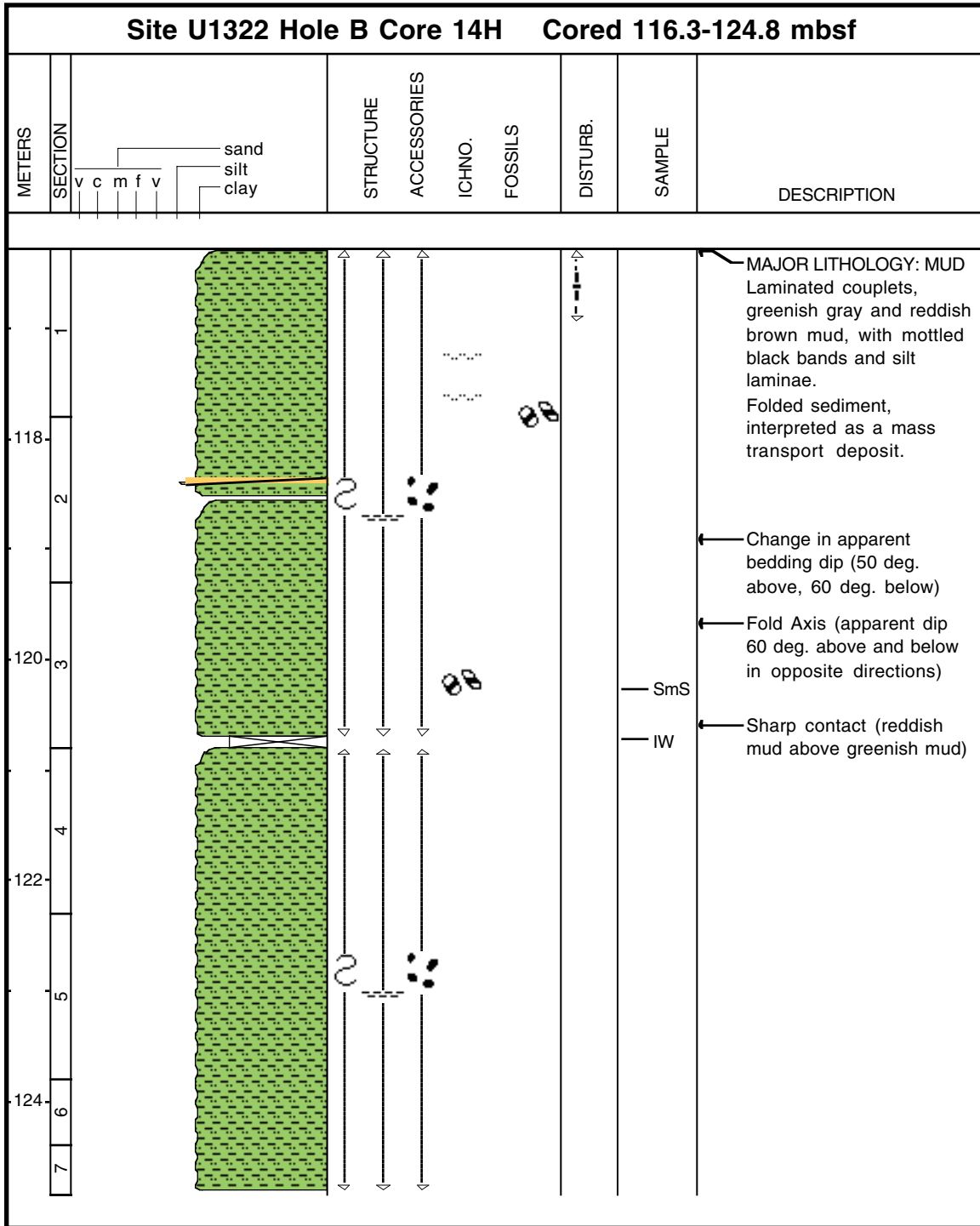
Core Photo



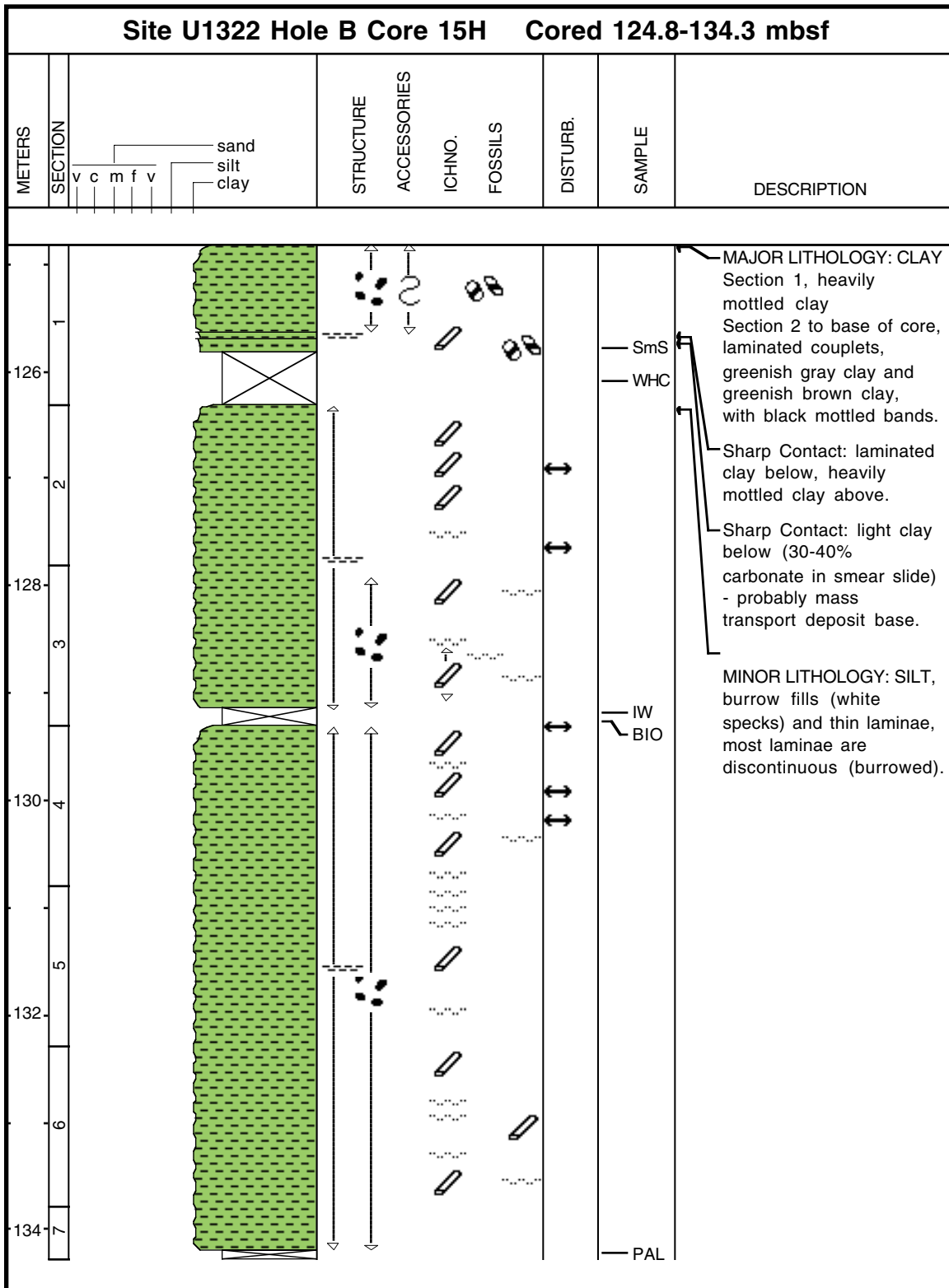
Core Photo



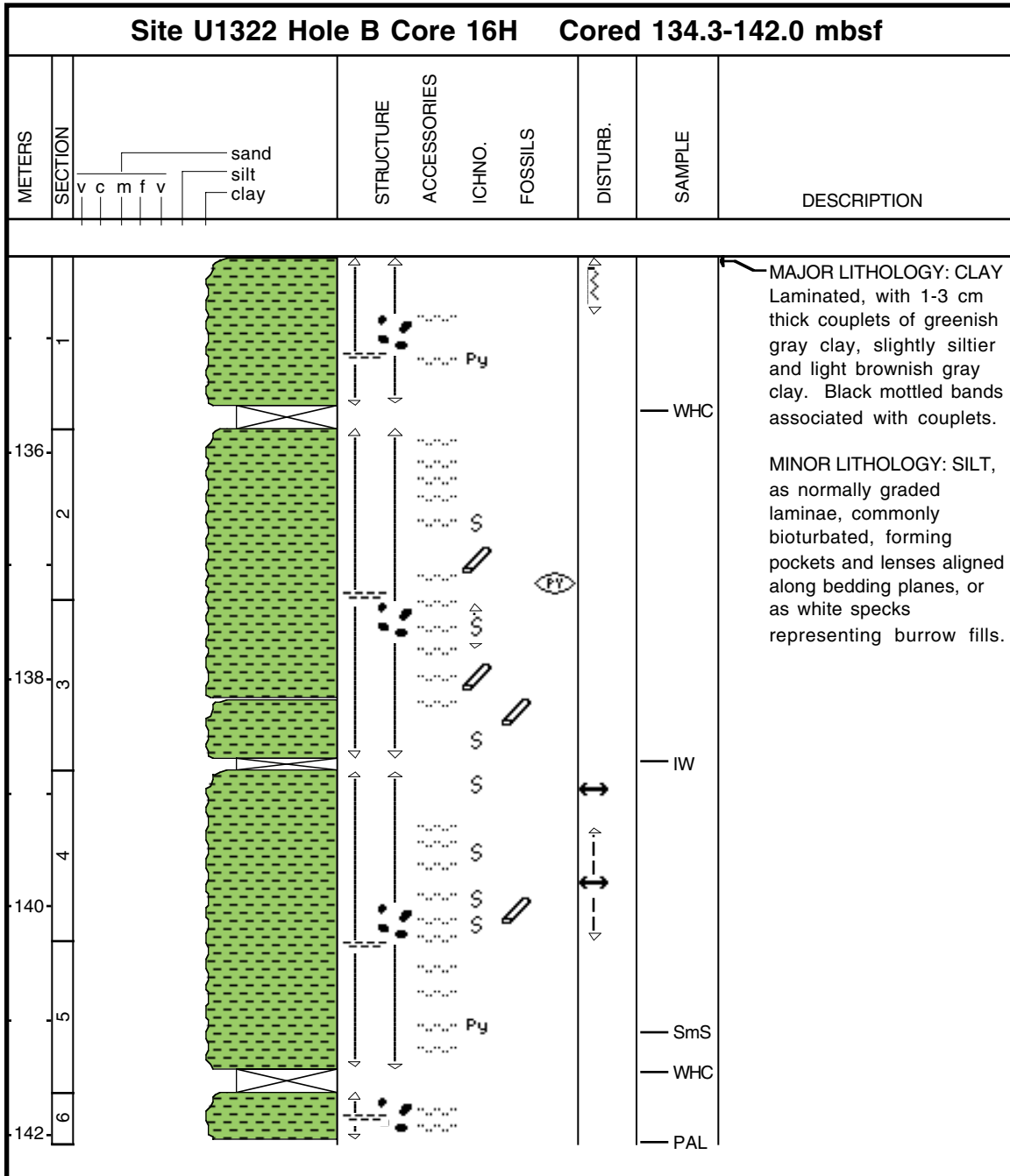
Core Photo



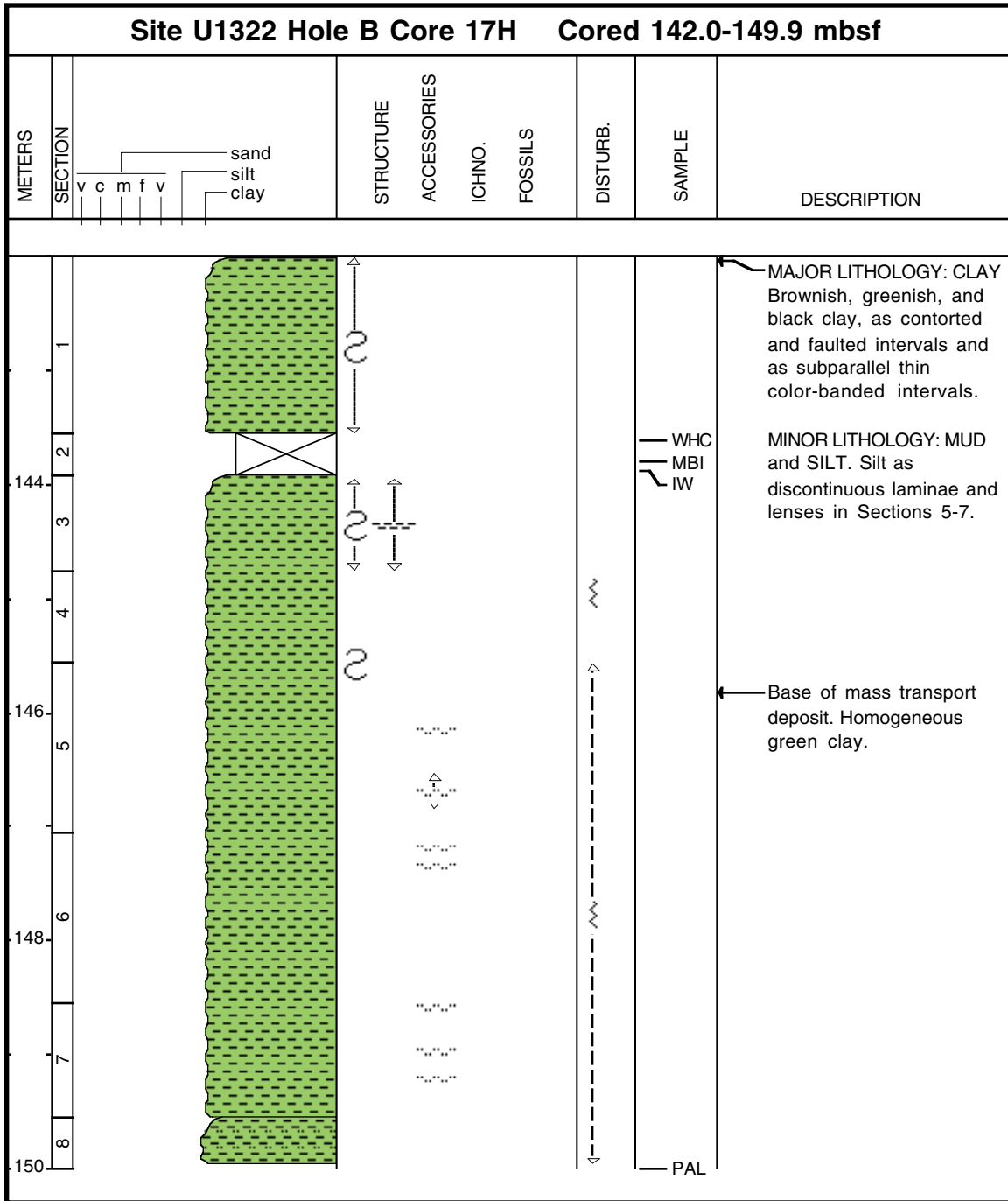
Core Photo



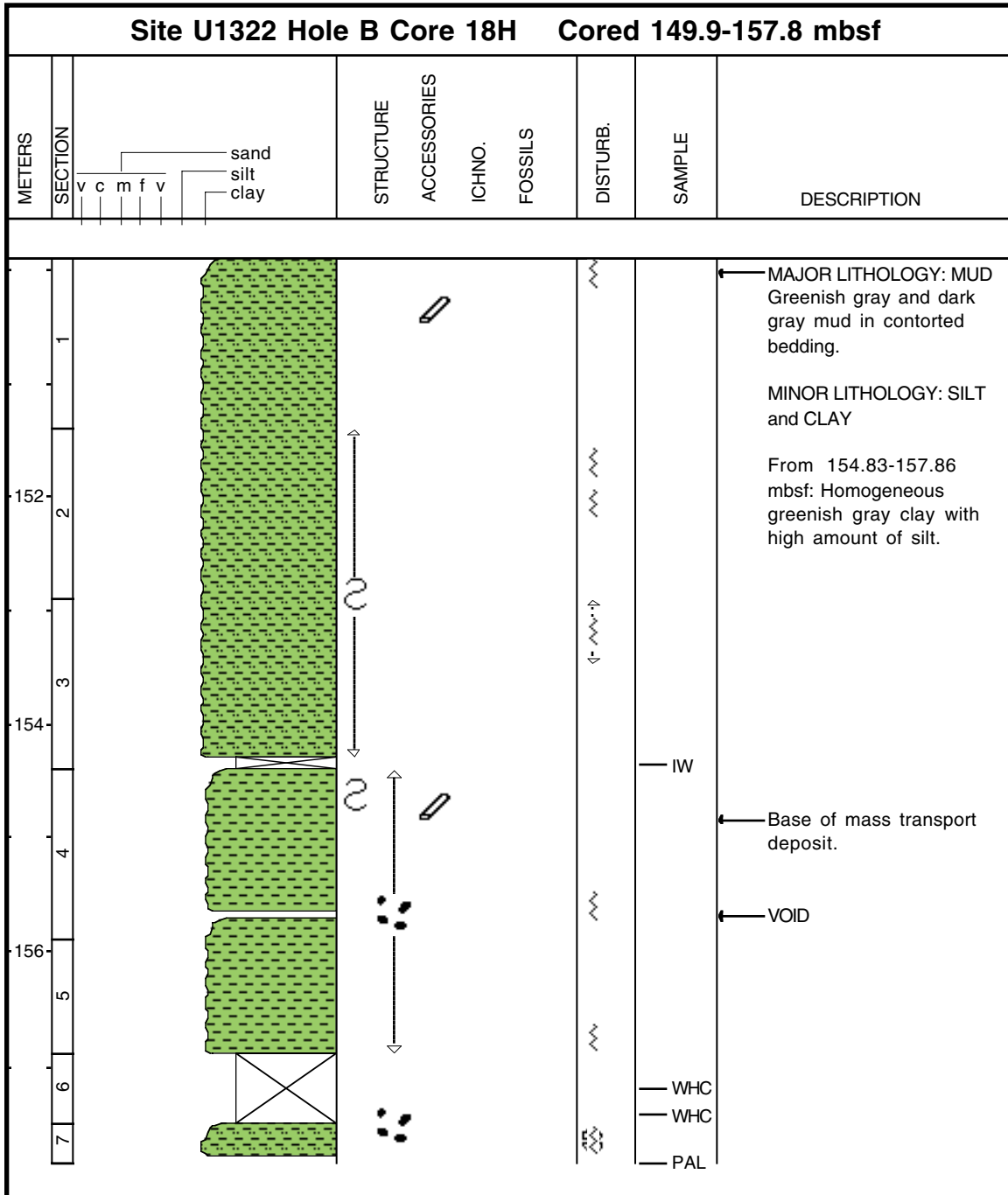
Core Photo



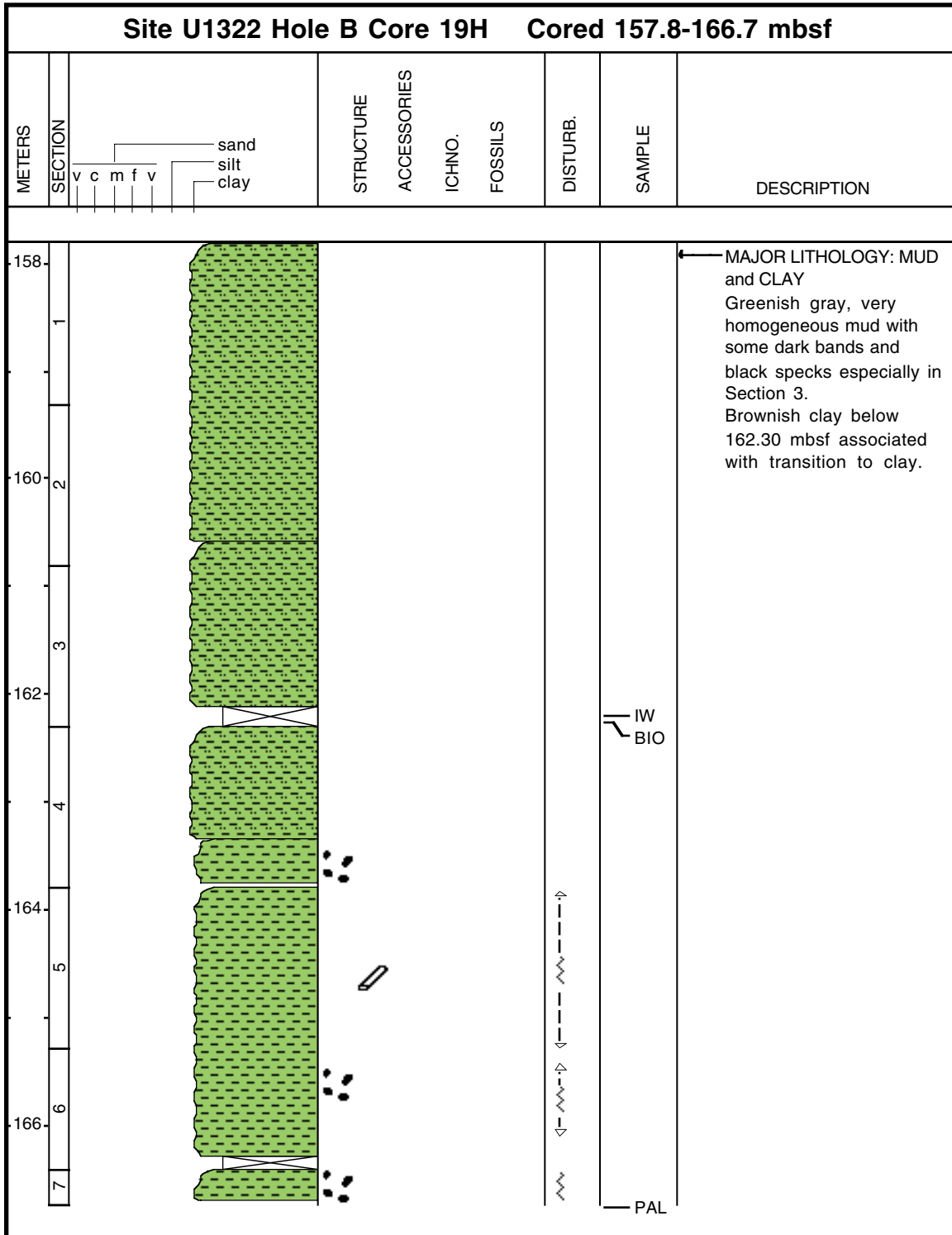
Core Photo



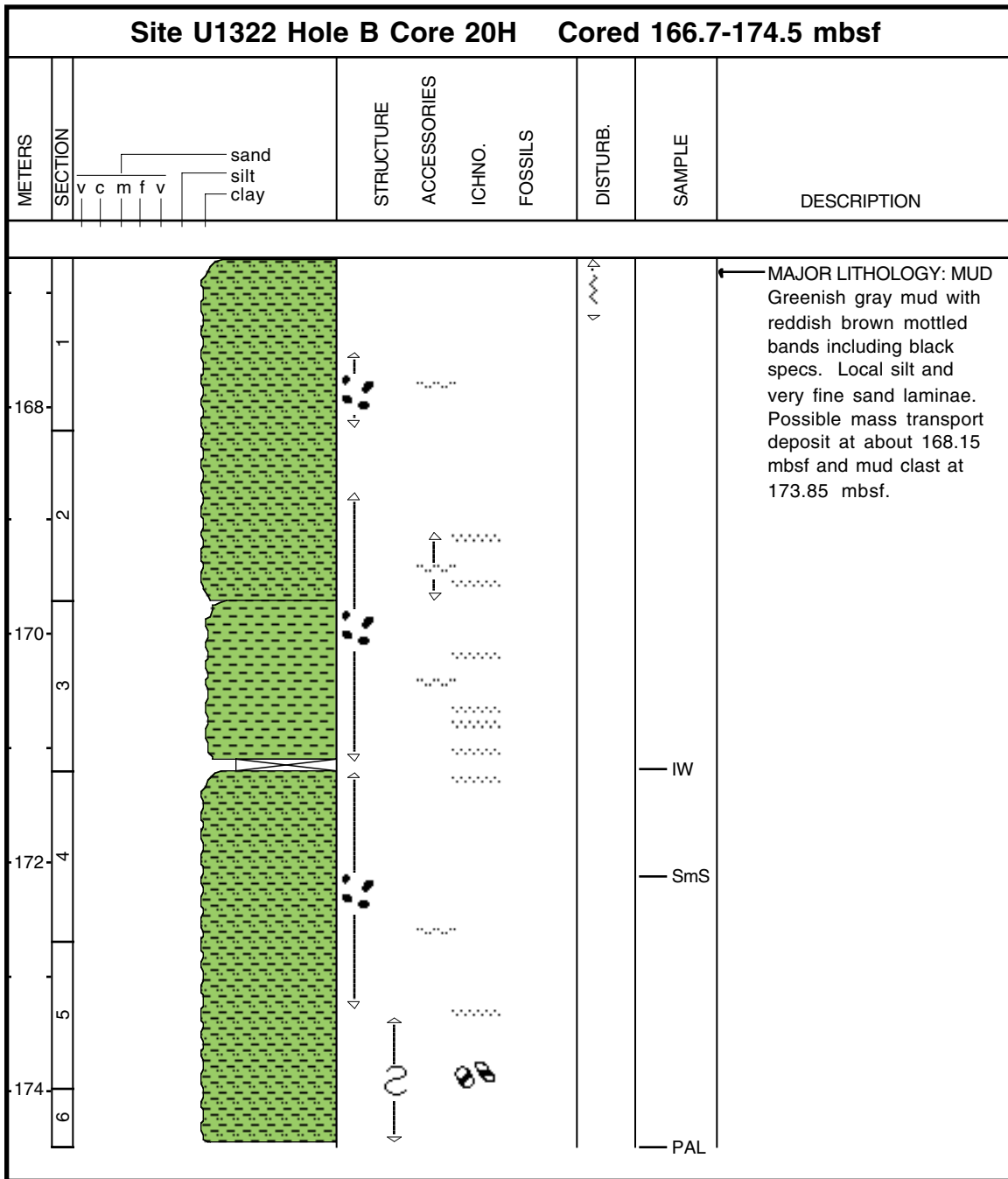
Core Photo



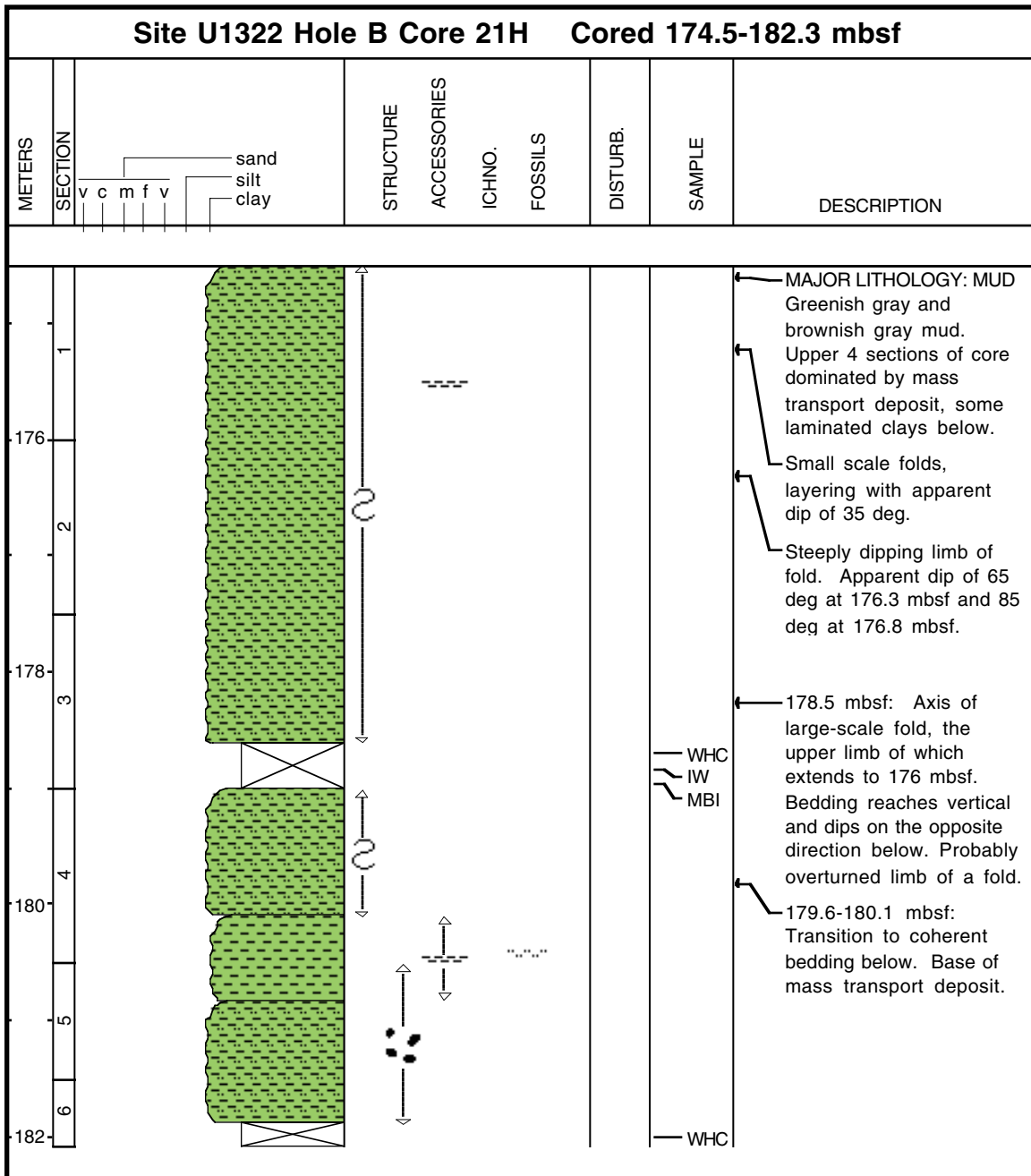
Core Photo



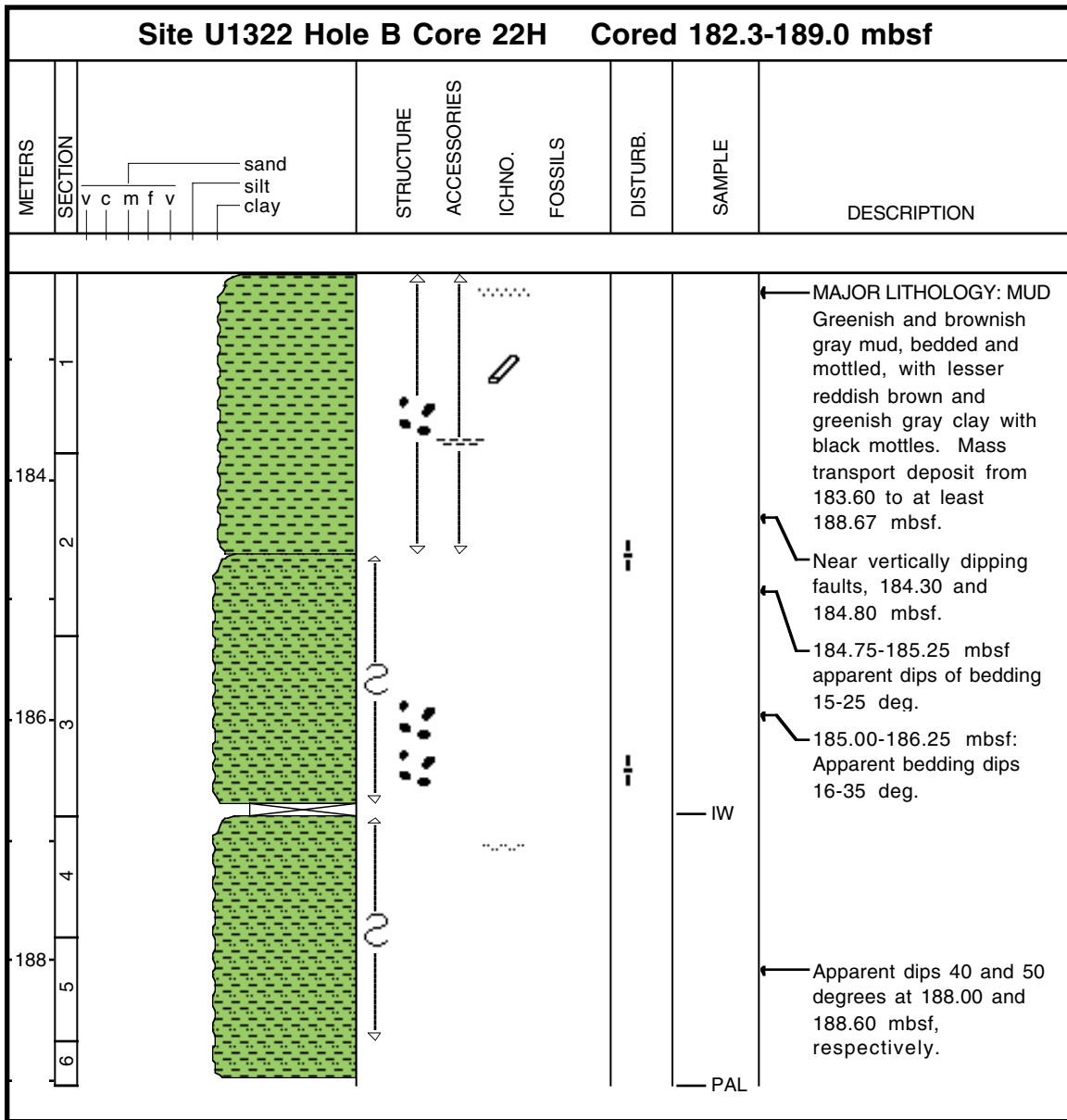
Core Photo



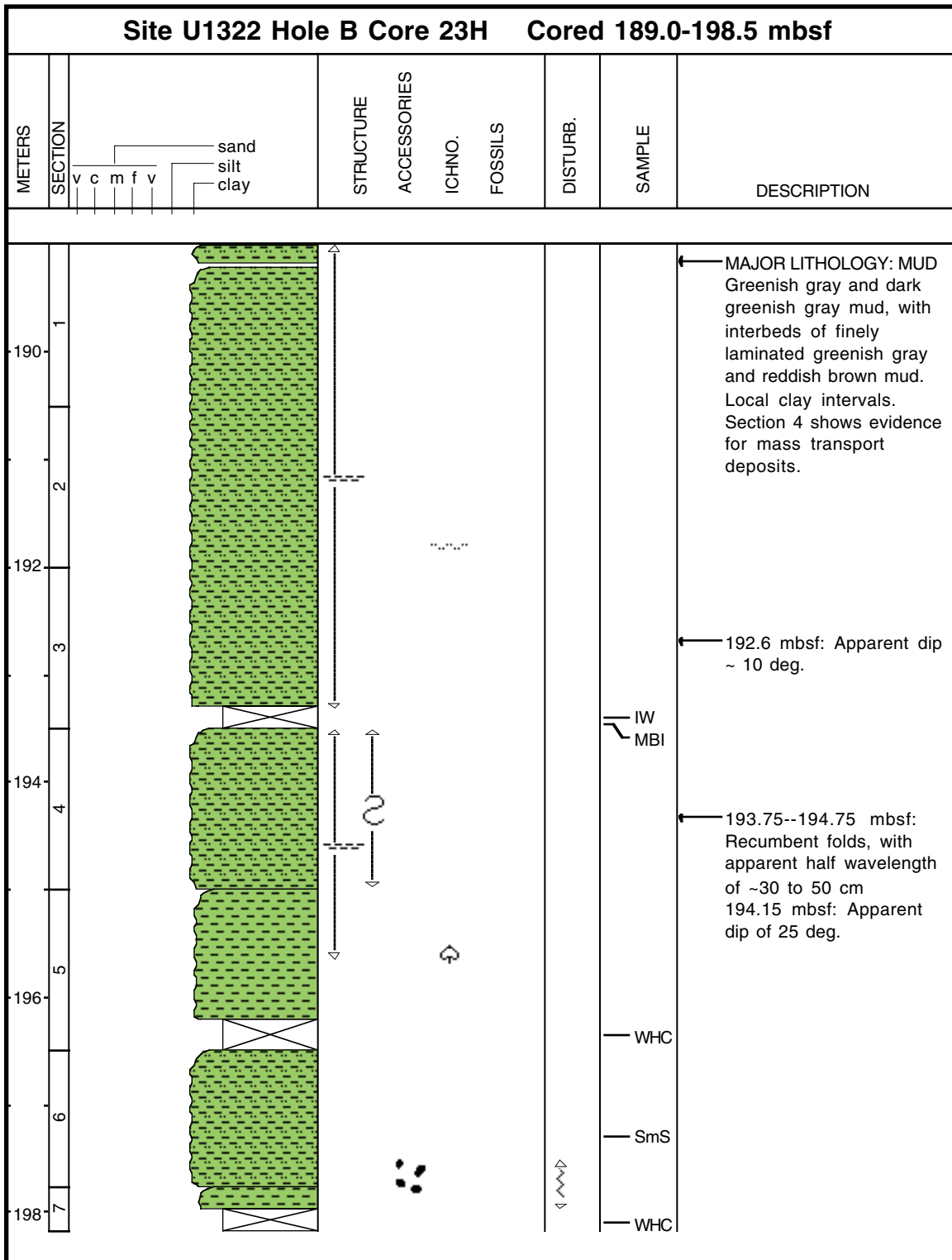
Core Photo



Core Photo



Core Photo

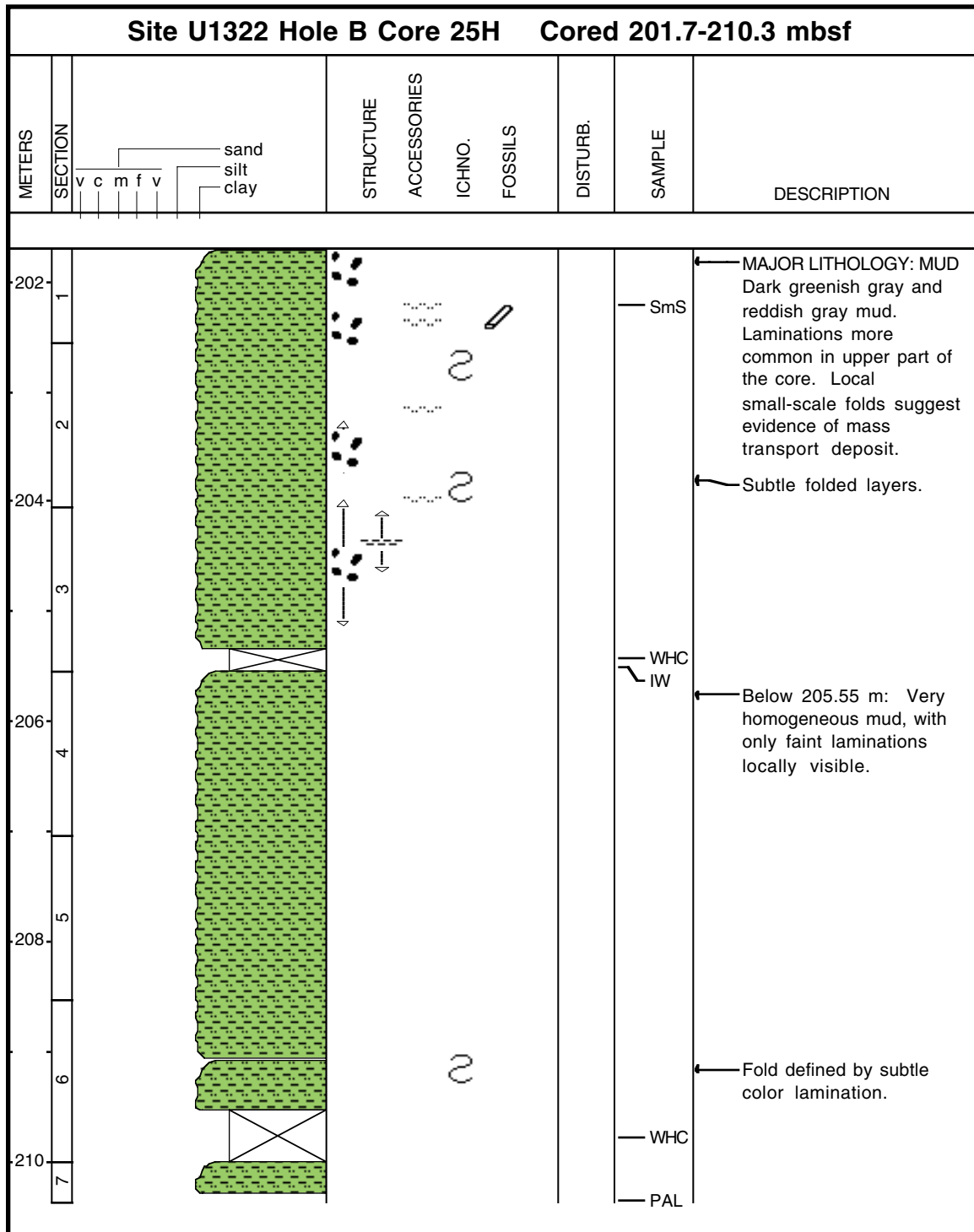


Core Photo

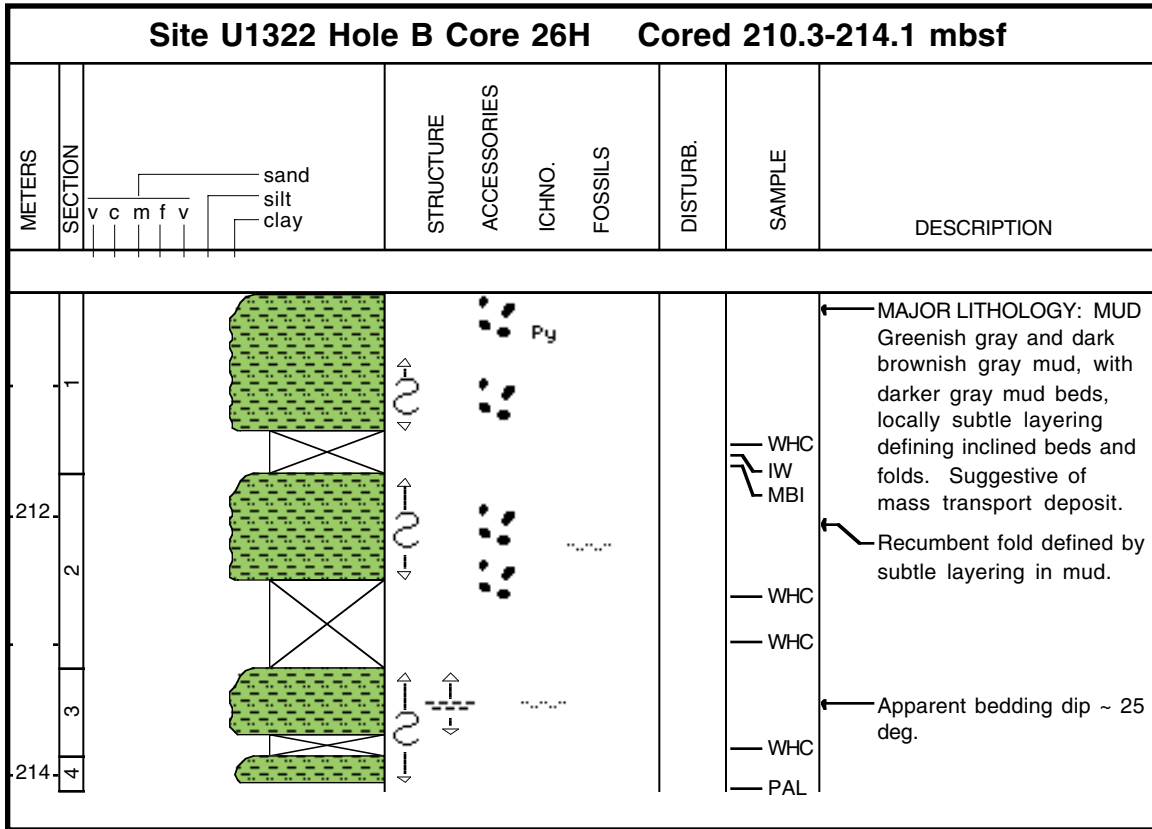
Site U1322 Hole B Core 24H Cored 198.5-201.7 mbsf									
METERS	SECTION		STRUCTURE	ACCESSORIES	ICHNO.	FOSSILS	DISTURB.	SAMPLE	DESCRIPTION
	v c m f v	sand silt clay							
1 200 2 3								WHC IW WHC PAL	<p>MAJOR LITHOLOGY: CLAY AND MUD</p> <p>Dark brown to dark greenish gray. Laminations subtle but folds and deformed laminae apparent in all sections. Deformed intervals interpreted as mass transport deposit.</p>



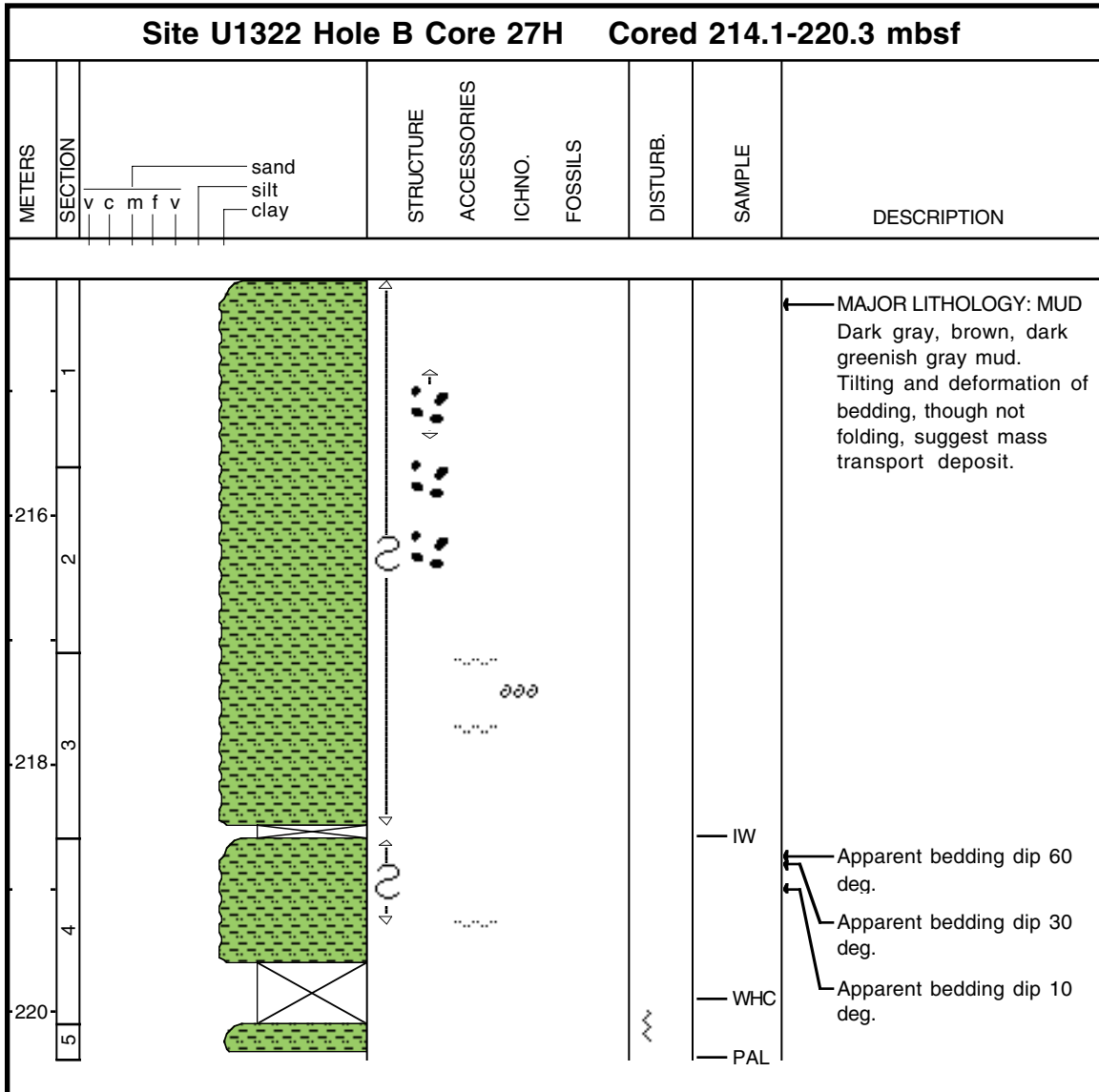
Core Photo



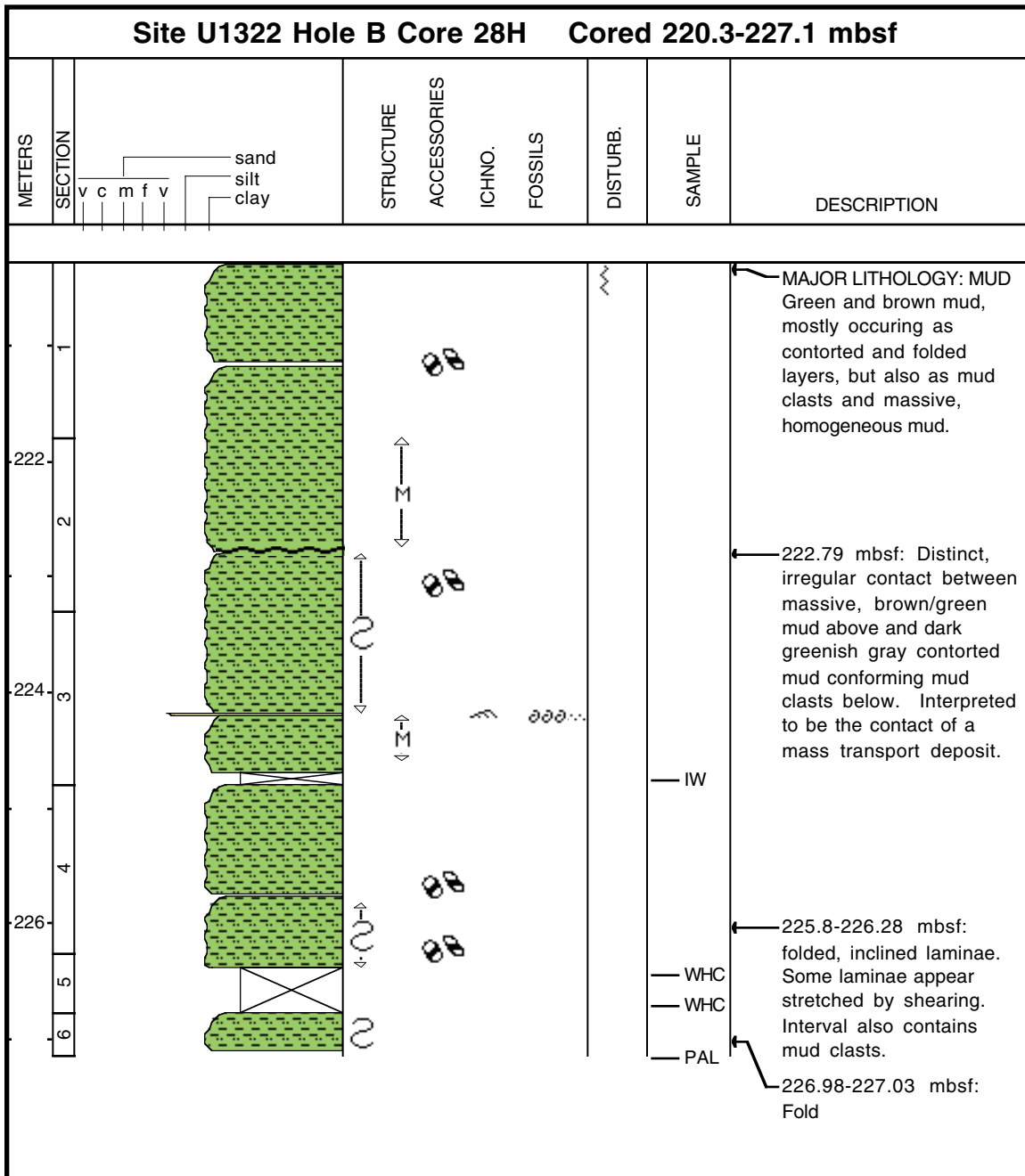
Core Photo



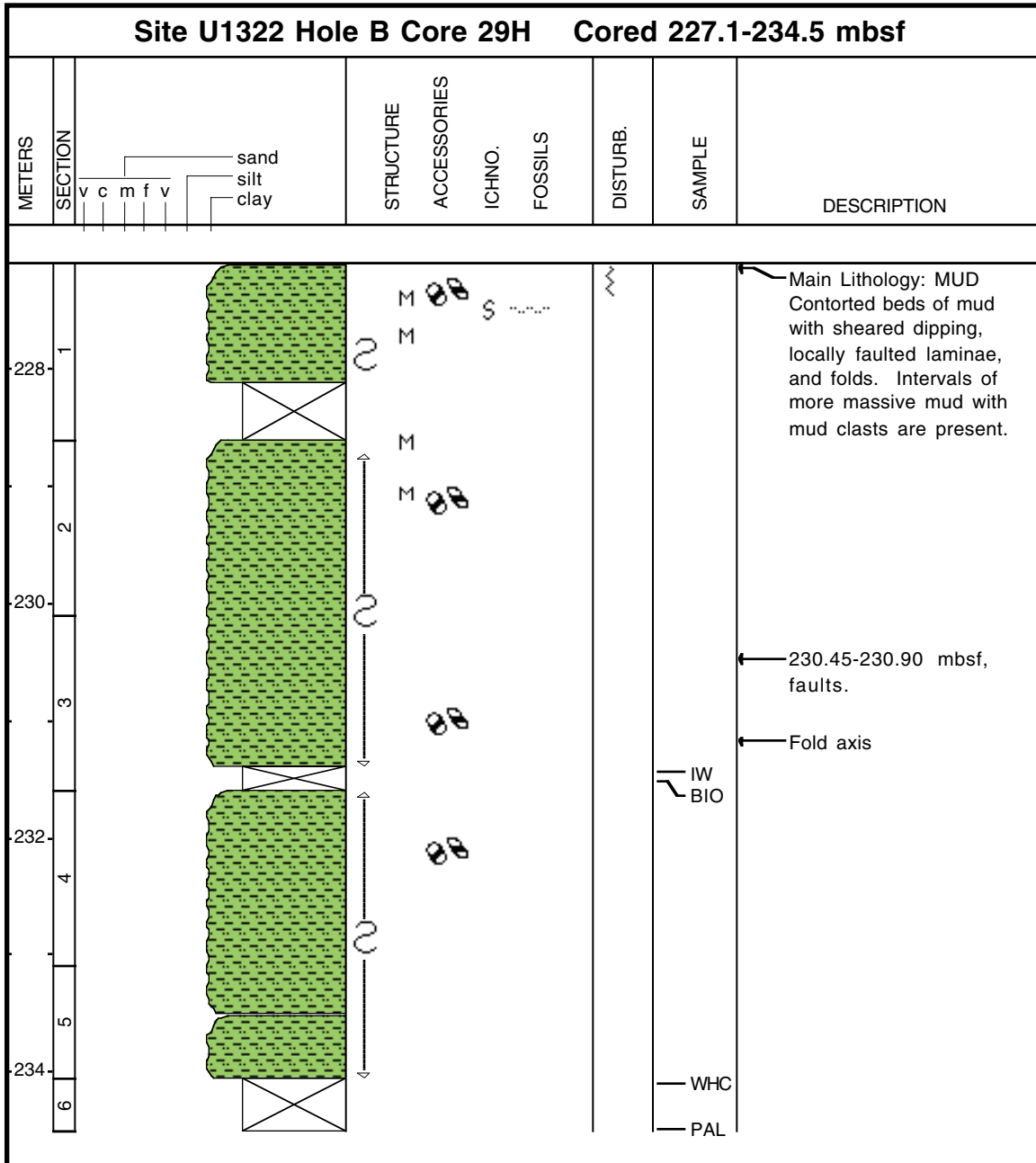
Core Photo



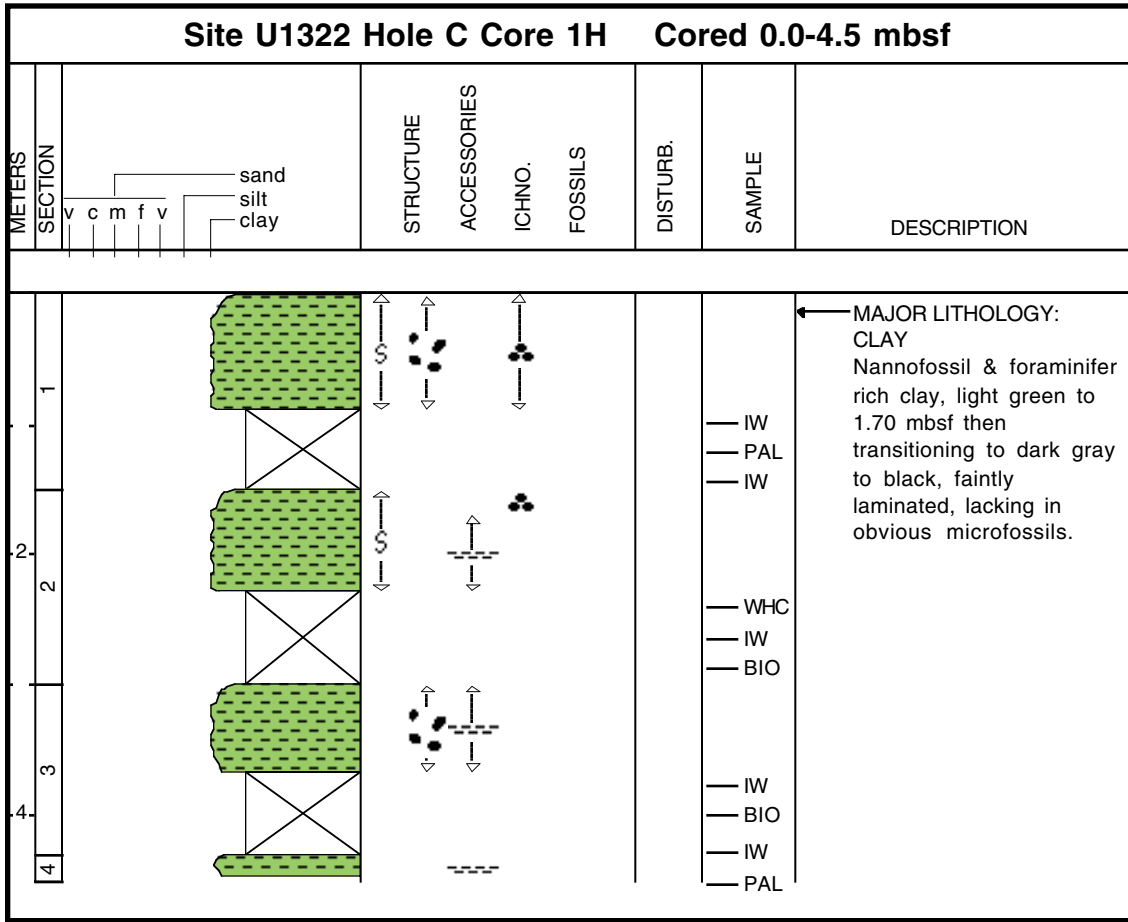
Core Photo



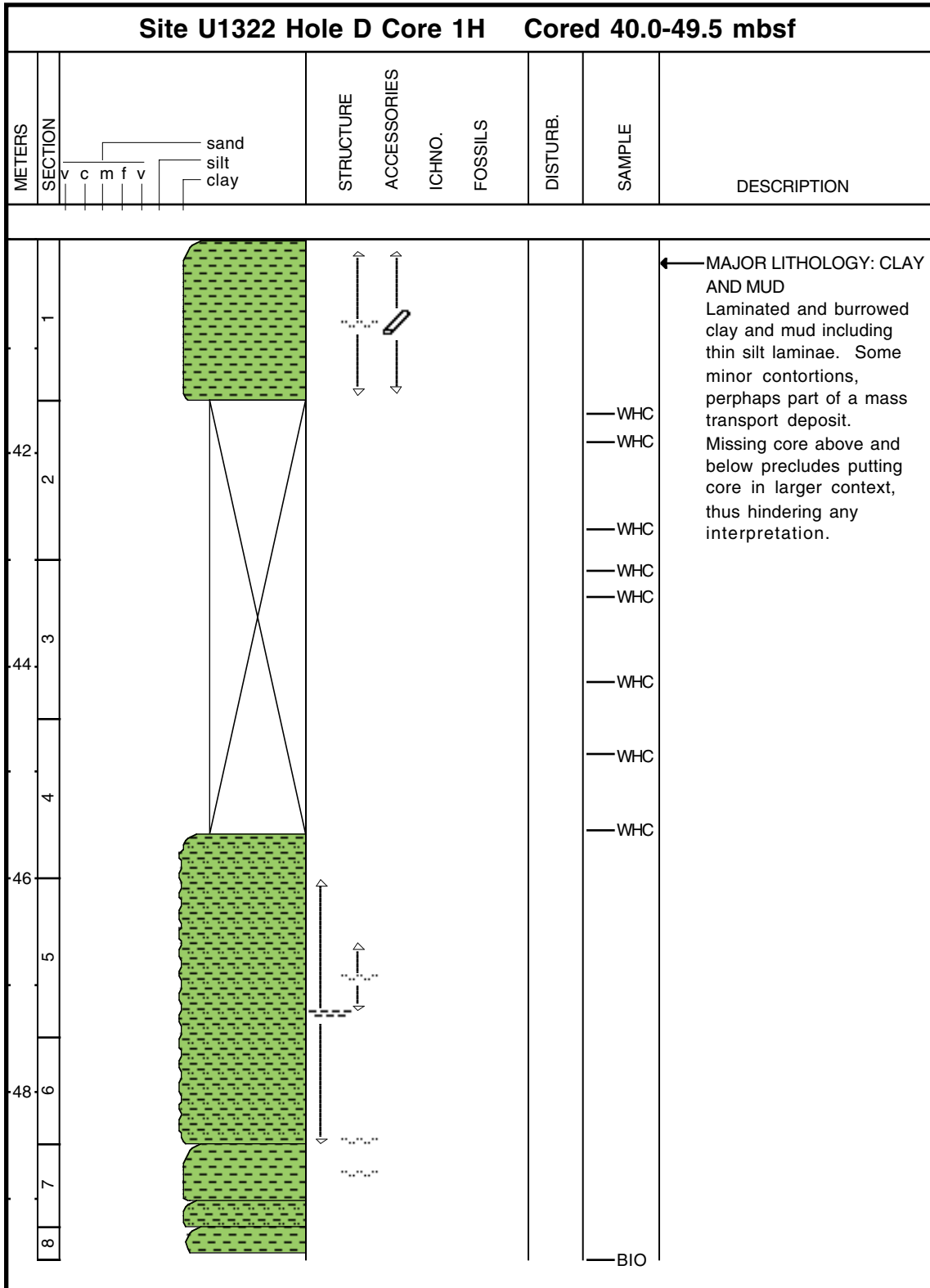
Core Photo



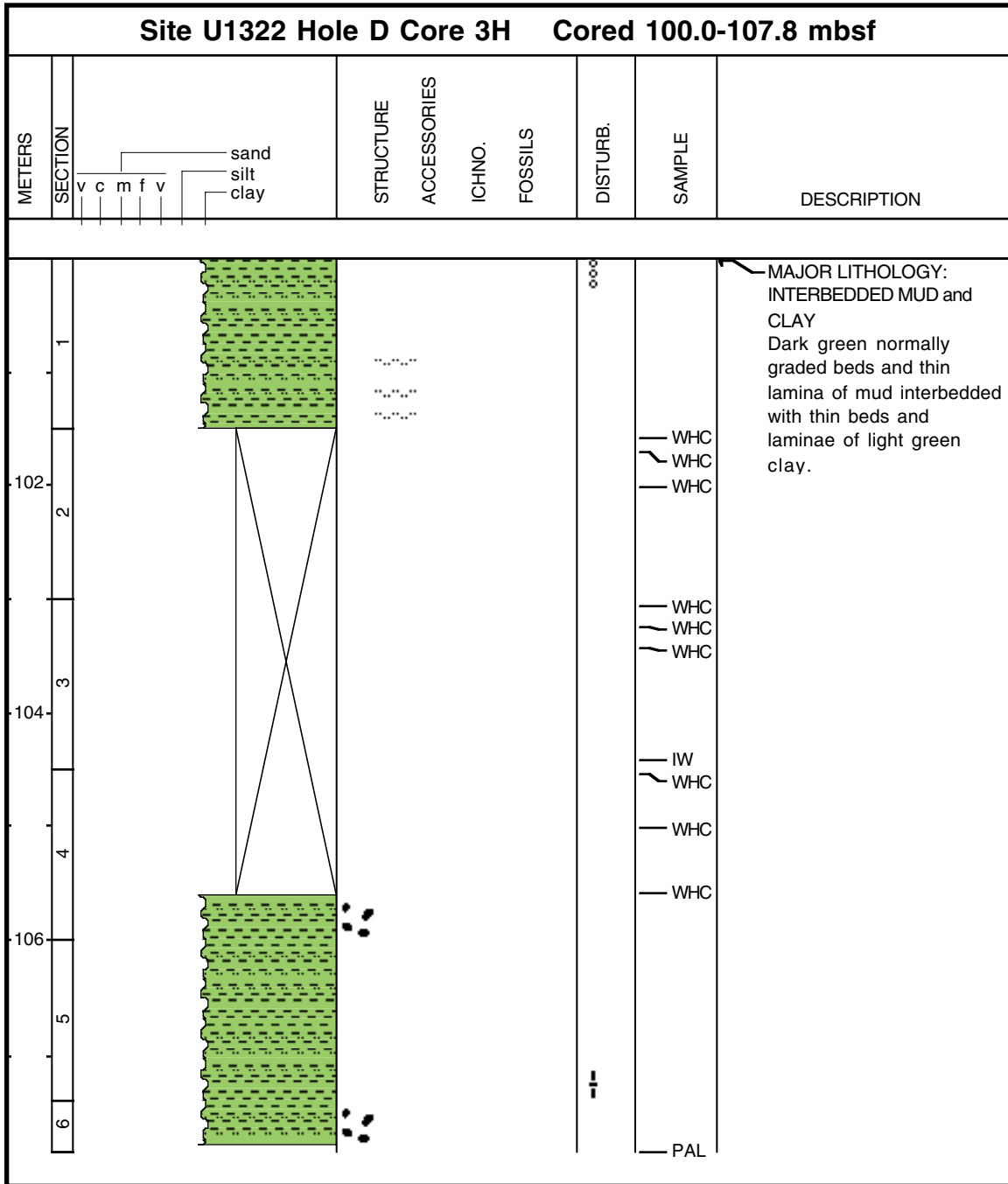
Core Photo



Core Photo



Core Photo





Leg	Site	H	Cor	T	Sc	Top (cm)	Depth (mbsf)	Lithology	Texture			Minerals					Biogenic				Remark	
									Sand	Silt	Clay	Quartz	Feldspar	Carbonate	Chlorite	Clay mineral	Mica	Foraminifers	Nannofossils	Sponge spic		Organic debris
308	1322	B	1	H	1	47	0.47	D		P	D	P				D		C				Clay; foram rich
308	1322	B	1	H	2	21	1.71	D		P	D	P		P		D		C		P		Clay; foram rich
308	1322	B	2	H	2	95	6.45	M		D	C	D		P					R	P		light gray brown silt
308	1322	B	2	H	4	75	9.25	D		C	D	P		P		D				R		clay
308	1322	B	3	H	1	108	14.58	M		C	D	C		C		C					A	black clay
308	1322	B	6	H	4	116	46.92	M		A	D	D		P			C		R	*	P	white speck
308	1322	B	6	H	4	121	46.97	M		D	A	D				C	A		P		*	silt lamina
308	1322	B	11	H	3	65	91.66	M		D	P	D									P	white burrow mud
308	1322	B	11	H	3	81	91.82	D		C	D	A		C		C			P		C	black clay
308	1322	B	11	H	3	82	91.83	D		A	D	D		C		C			P	P	C	light brown mud
308	1322	B	12	H	4	75	104.25	D		A	D	C	P	C		D						mud
308	1322	B	14	H	1	96	117.26	D		A	D	A		A		A			P		P	"white reddish mud, carbonate rich"
308	1322	B	14	H	3	91	120.21	M		A	D	C		C		D			P		P	white clay mud clast
308	1322	B	16	H	5	78	141.08	M	A	D		D				P						"white burrow quartz-rich, sandy silt"
308	1322	B	20	H	4	87	172.07	D		A	D	A		A		C					C	dark brown mud
308	1322	B	23	H	6	78	197.28	M		C	D	D		P							C	yellow clay lamina
308	1322	B	25	H	1	50	202.2	M	D	C		D		C							C	"white silty sand, sand lamina"
308	1322	B	25	H	2	32	202.87	D		A	D	A		C		A			P		C	dark gray mud
308	1322	B	25	H	2	34	202.89	D		A	D	A		C		A				R	A	reddish mud
308	1322	B	25	H	4	60	206.15	D		P	D	C				A					A	dark gray clay
308	1322	B	27	H	2	60	216.2	D		A	D	A		C		D		P		R	P	brownish mud
308	1322	B	27	H	2	62	216.22	M	P	A	A	A		C		C			P		C	black lamina of mud
308	1322	B	29	H	1	38	227.48	M	C	D		D		C							P	white brownish silt lamina
308	1322	B	29	H	2	47	229.07	D		A	D	C		C		D			R		C	greenish gray mud