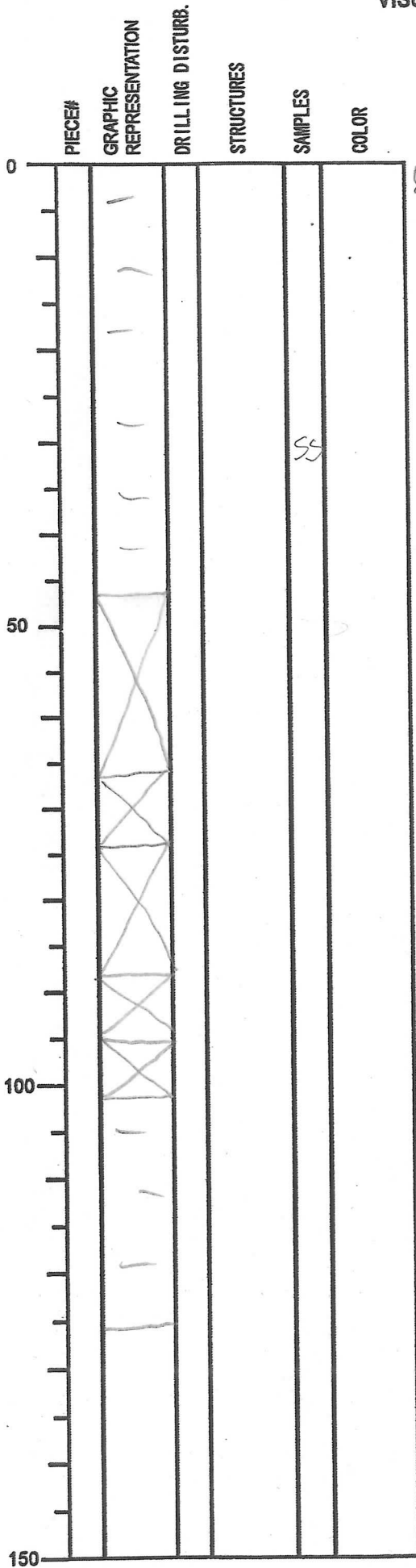


INTEGRATED OCEAN DRILLING PROGRAM
VISUAL CORE DESCRIPTION

NO.
DATE: 29/12/2007
EXP: 316
SITE/HOLE: C0006C
CORE: 14
SECTION: 1
OBSERVER: CLF



SECTION DESCRIPTION

4m Forams
Dark greenish gray silty clay

INAW

Cult

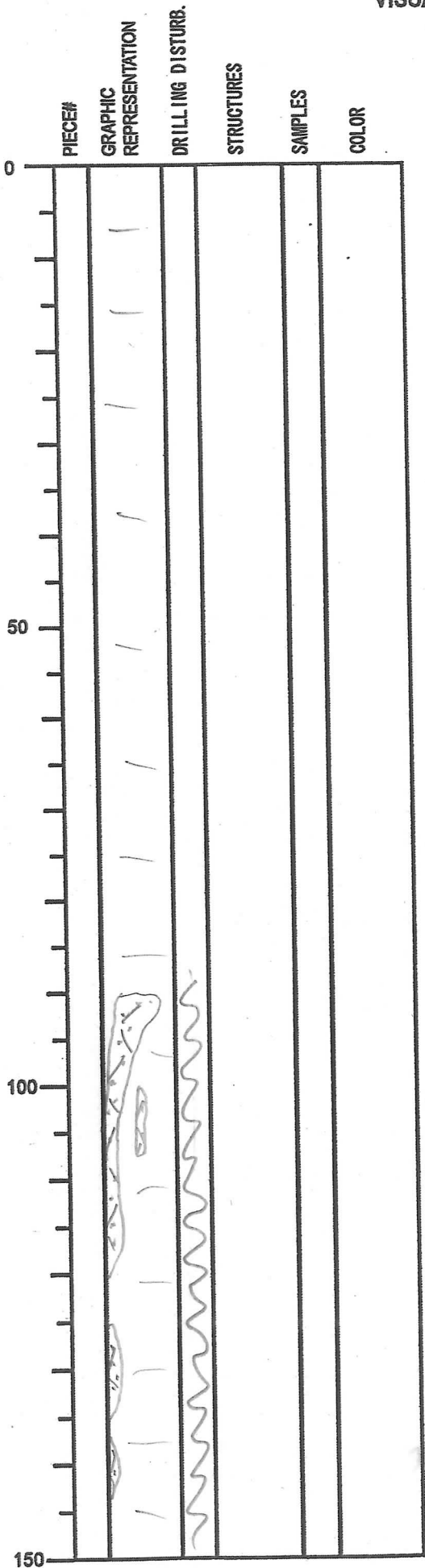
Anna

NR

House

INTEGRATED OCEAN DRILLING PROGRAM
VISUAL CORE DESCRIPTION

NO.
DATE: 29/12/2007
EXP: 316
SITE/HOLE: C0006C
CORE: 1H
SECTION: 3
OBSERVER: CLF



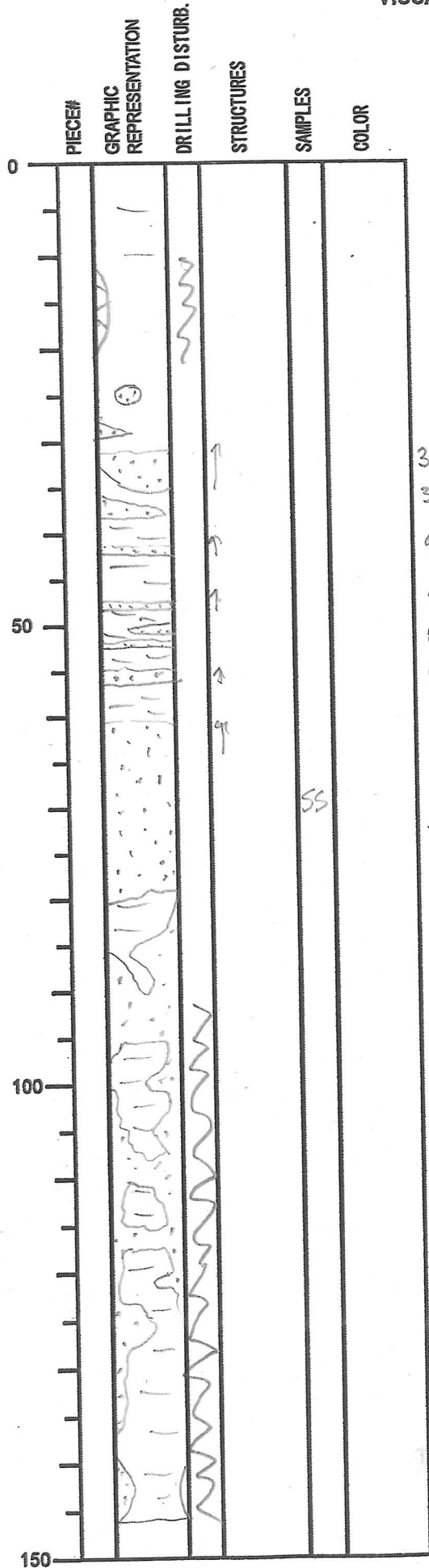
SECTION DESCRIPTION

Dark greenish-gray silty clay

Brown-yy and greenish-gray
colouration down side of core -
rich in glass, - clayey ash, but
are disrupted.

INTEGRATED OCEAN DRILLING PROGRAM
VISUAL CORE DESCRIPTION

NO.
DATE: 29 11/2007
EXP: 216
SITE/HOLE: C0006C
CORE: 1H
SECTION: 4
OBSERVER: CLF



SECTION DESCRIPTION

Dk greenish-gray silty clay

Balls + disrupted layers of

Fine sands - dk olive gy

- graded tops

show disruption in lower half of section

drilling or natural?

Some moderate drilling disturbance

36-31cm

38-36cm

42-41cm

47-46cm

52-51cm

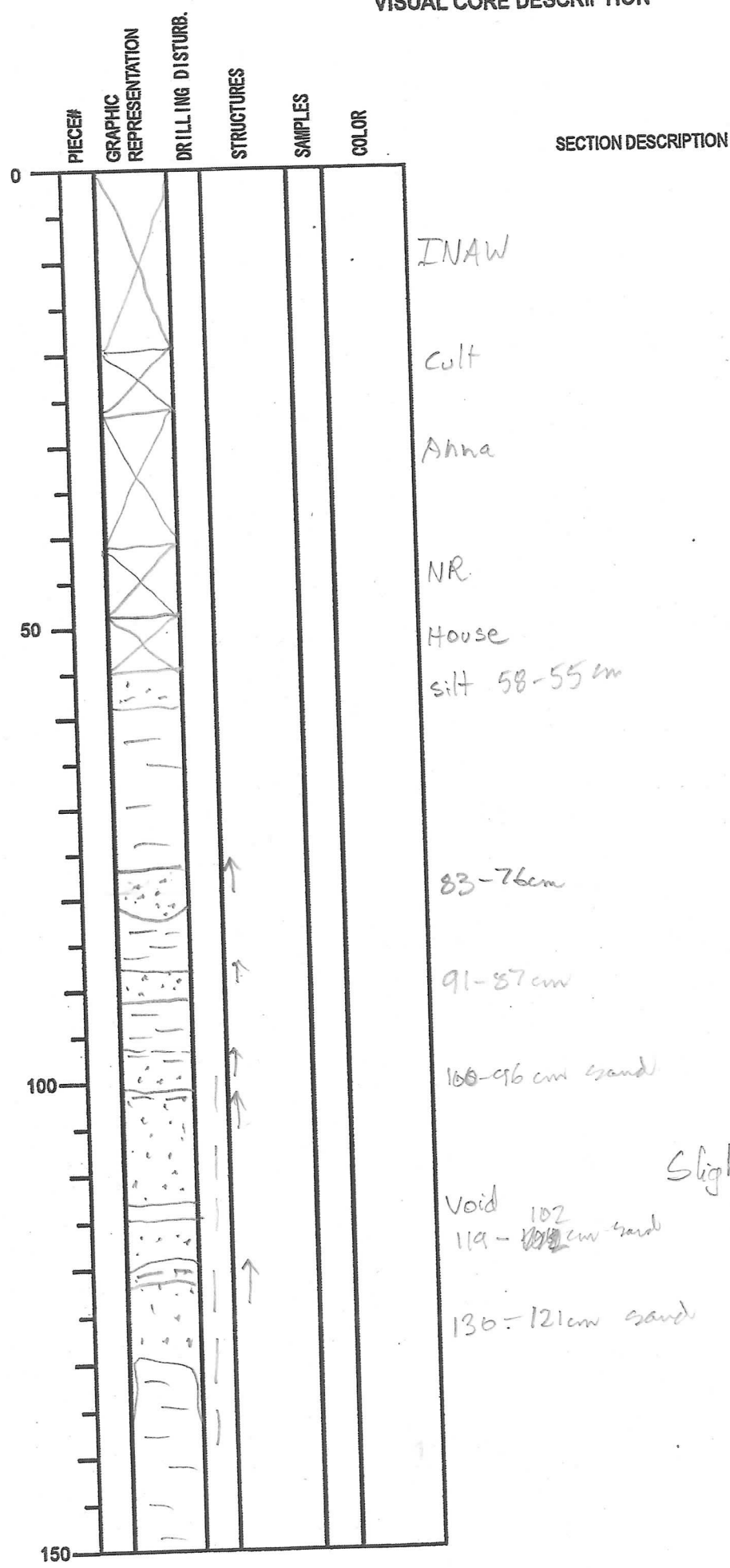
56-55cm

79-68cm

SS

INTEGRATED OCEAN DRILLING PROGRAM
VISUAL CORE DESCRIPTION

NO.
DATE: 29/12/2007
EXP: 316
SITE/HOLE: C0006
CORE: 14
SECTION: 5
OBSERVER: CUP



Slight drilling disruption

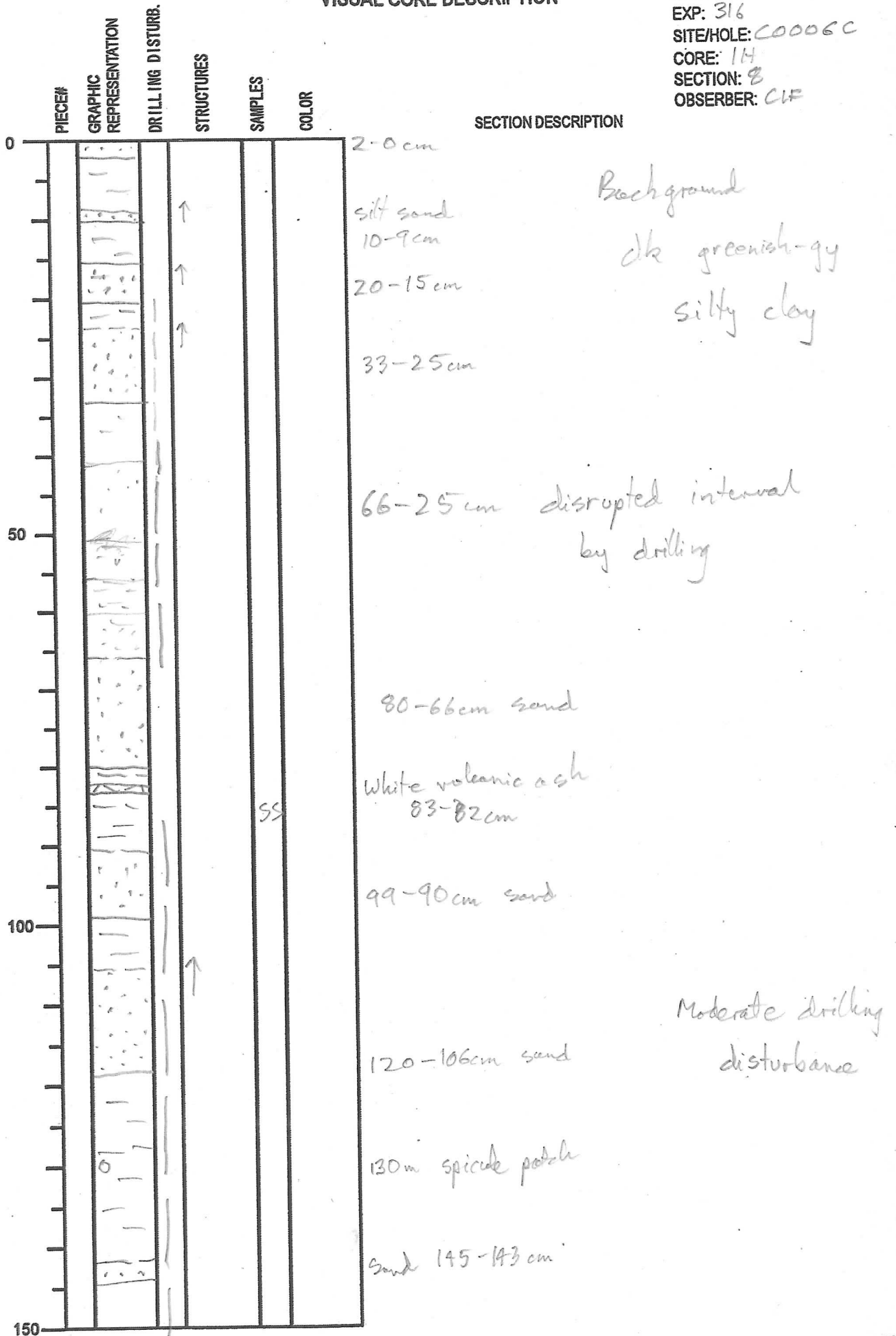
INTEGRATED OCEAN DRILLING PROGRAM
VISUAL CORE DESCRIPTION

NO.
DATE: 29 / 12 / 20 07
EXP: 316
SITE/HOLE: C0006C
CORE: 14
SECTION: 7
OBSERVER: CLP

PIECE#	GRAPHIC REPRESENTATION	DRILLING DISTURB.	STRUCTURES	SAMPLES	COLOR	SECTION DESCRIPTION
0						Dk greenish-gy silty clay
			↑			Silt/v. fine sand 35-25cm
			↑			47-45cm silt/sand
50			↑			55-50 silt/sand
						67-65cm Gy. volcanic ash + sponge spicule tube
			↑			80-78cm silt-sand
			↑			116-110cm silt-sand
100			↑			124-119cm silt sand
			↑			131-125 silt/sand
150						

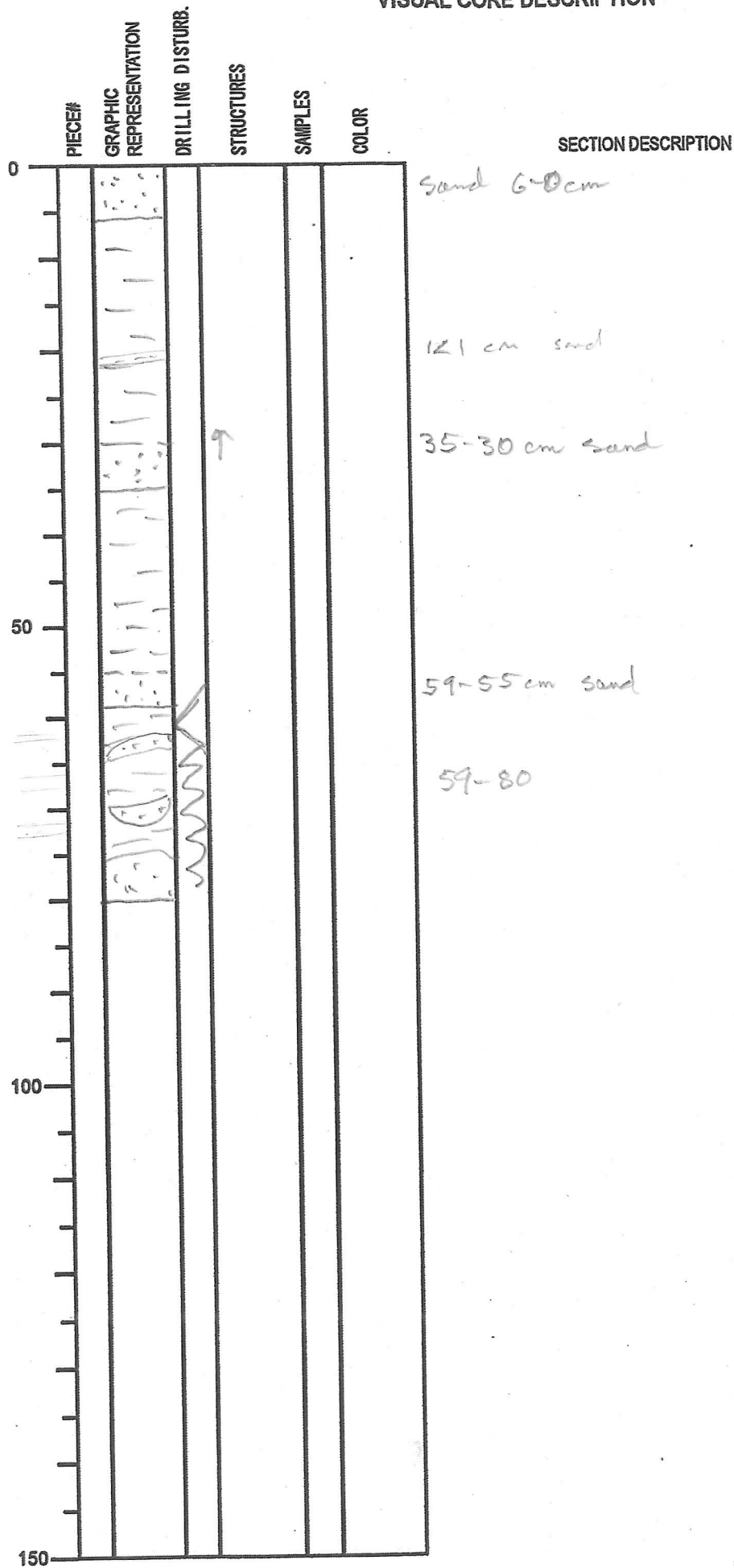
INTEGRATED OCEAN DRILLING PROGRAM
VISUAL CORE DESCRIPTION

NO.
DATE: 29 11 2007
EXP: 316
SITE/HOLE: C0006C
CORE: 14
SECTION: 8
OBSERVER: CIF



INTEGRATED OCEAN DRILLING PROGRAM
VISUAL CORE DESCRIPTION

NO.
DATE: 29/12/2007
EXP: 316
SITE/HOLE: C0006C
CORE: 11
SECTION: 9
OBSERVER: CLF



Silty clay

INTEGRATED OCEAN DRILLING PROGRAM
VISUAL CORE DESCRIPTION

NO.
DATE: 29/12/2007
EXP: 316
SITE/HOLE: C0006C
CORE: 1H
SECTION: 10
OBSERVER: CLF

PIECE#	GRAPHIC REPRESENTATION	DRILLING DISTURB.	STRUCTURES	SAMPLES	COLOR	SECTION DESCRIPTION
0						Sand 10-2cm
						Sand 15-13cm
						Silt-sand 23-29cm Same sand-sand mixture - drilling disturbance
						28-27cm sand
						45-38cm sand-mud mixture drilling disturbance
50						52-51cm sand
						Sand 70-68cm
100						
150						

Silty clay

INTEGRATED OCEAN DRILLING PROGRAM
VISUAL CORE DESCRIPTION

NO.
DATE: 29/12/2007
EXP: 316
SITE/HOLE: C0006C
CORE: 114
SECTION: 10CC
OBSERVER: CLR

PIECE#	GRAPHIC REPRESENTATION	DRILLING DISTURB.	STRUCTURES	SAMPLES	COLOR	SECTION DESCRIPTION
0	PAL					9-5cm sand
						Silty clay
						sand 16-15cm
						sand 28-23cm
50						
100						
150						