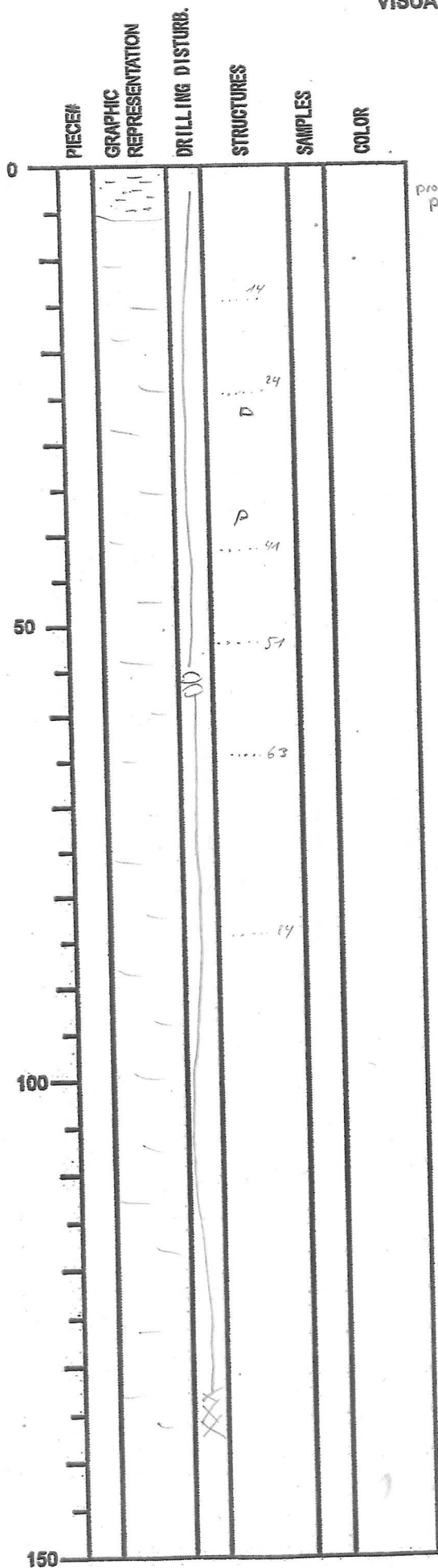


INTEGRATED OCEAN DRILLING PROGRAM
VISUAL CORE DESCRIPTION

NO.
DATE: 9/11/2007
EXP: 316
SITE/HOLE: C0006F
CORE: 1R
SECTION: 1
OBSERVER: MS/KM



SECTION DESCRIPTION

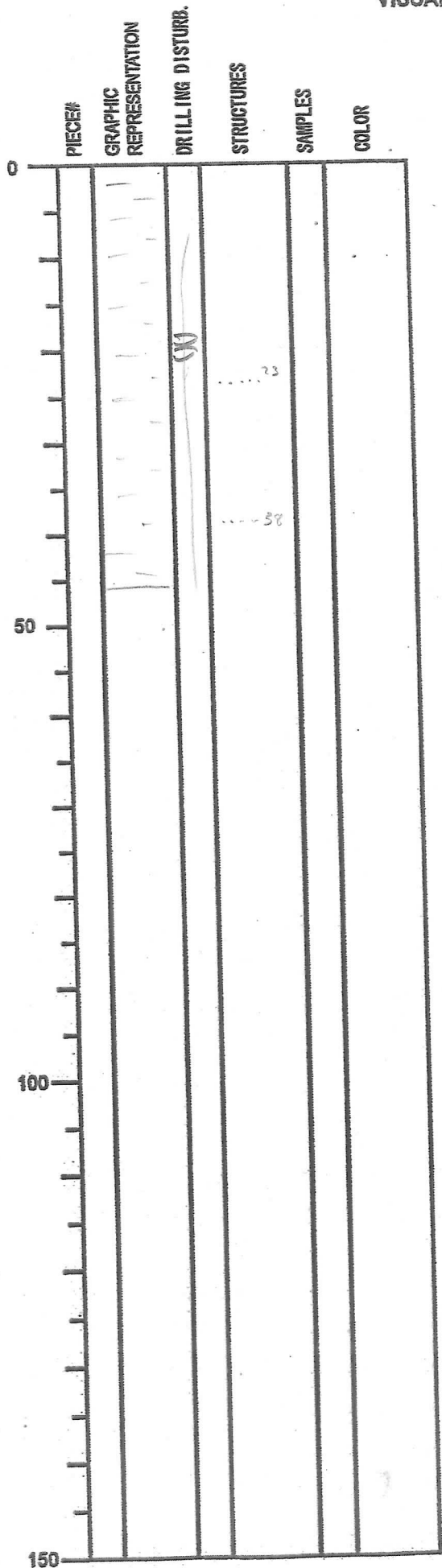
probably filled in piece

dark greenish gray silty claystone
with thin 0.5 to 1cm thick
silt laminae (often at biscuits breaks)

slightly to moderately bioturbated
with condities and ^{thought} subhorizontal
borrow structures and occasionally
pyritization (along borrows).

INTEGRATED OCEAN DRILLIGN PROGRAM
VISUAL CORE DESCRIPTION

NO.
DATE: 1 / 20
EXP: 316
SITE/HOLE: C0006F
CORE: 1R
SECTION: 2
OBSERBER: MS/KLM




SECTION DESCRIPTION

rs above

INTEGRATED OCEAN DRILLIGN PROGRAM
VISUAL CORE DESCRIPTION

NO.
DATE: / / 20
EXP:
SITE/HOLE: C0006E
CORE: 1R
SECTION: CC
OBSERBER: MS/KM

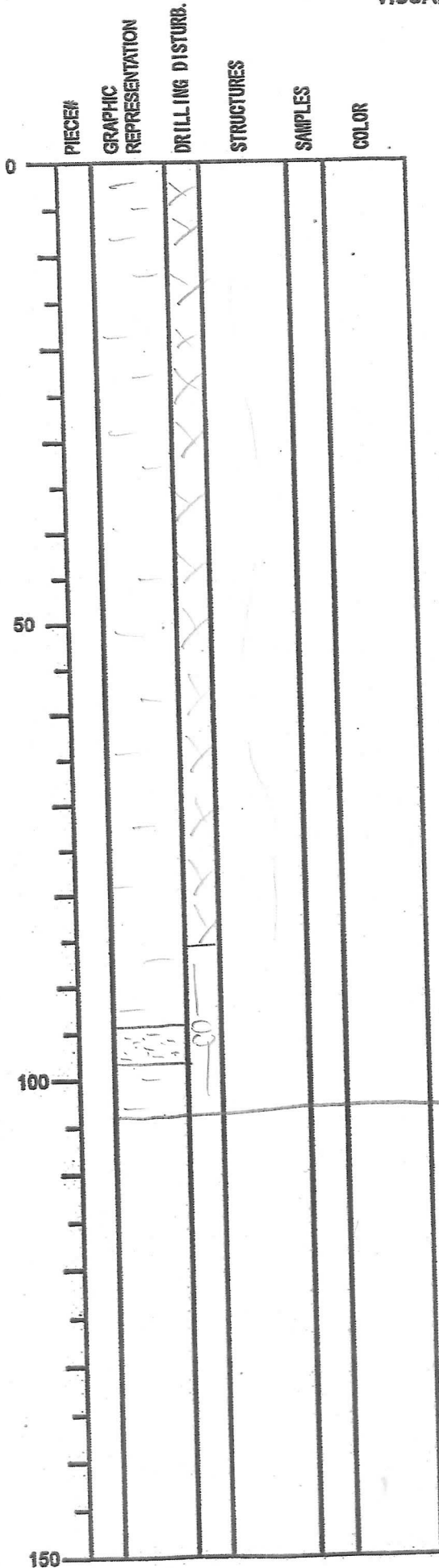
PIECE#	GRAPHIC REPRESENTATION	DRILLING DISTURB.	STRUCTURES	SAMPLES	COLOR
0	PAL				
50					
100					
150					

SECTION DESCRIPTION

as above

INTEGRATED OCEAN DRILLING PROGRAM
VISUAL CORE DESCRIPTION

NO.
DATE: 3/11/2008
EXP: 316
SITE/HOLE: C0006 F
CORE: 2R
SECTION: 1
OBSERVER: MS



SECTION DESCRIPTION

dark greenish gray silty clay
~~slightly bioturbated~~
only small chips in the first 85cm
(=> potentially present thin silt layer
might be missed)

54-97

INTEGRATED OCEAN DRILLIGN PROGRAM
VISUAL CORE DESCRIPTION

NO.
DATE: / / 20
EXP:
SITE/HOLE:
CORE: 2R
SECTION: 2
OBSERBER:

PIECE#	GRAPHIC REPRESENTATION	DRILLING DISTURB.	STRUCTURES	SAMPLES	COLOR
0					
50					
100					
150					

SECTION DESCRIPTION



INTEGRATED OCEAN DRILLING PROGRAM
VISUAL CORE DESCRIPTION

NO.
DATE: 1 / 20
EXP:
SITE/HOLE: C000 BF
CORE: 2R
SECTION: 3
OBSERVER: MS

PIECE#	GRAPHIC REPRESENTATION	DRILLING DISTURB.	STRUCTURES	SAMPLES	COLOR	SECTION DESCRIPTION
0						as above
20						
50						
50-81						
93						→ could be drilley mud probably drilley mud mixed with small clips
100						
150						

INTEGRATED OCEAN DRILLING PROGRAM
VISUAL CORE DESCRIPTION

NO.
DATE: 1 / 20
EXP:
SITE/HOLE:
CORE: 2R
SECTION: CC
OBSERVER:

PIECE#	GRAPHIC REPRESENTATION	DRILLING DISTURB.	STRUCTURES	SAMPLES	COLOR
0	PAL				
50					
100					
150					

SECTION DESCRIPTION

as above
nice shear bands in coherent piece

INTEGRATED OCEAN DRILLING PROGRAM
VISUAL CORE DESCRIPTION

NO.
DATE: 1 120
EXP:
SITE/HOLE: C0006F
CORE: 3R
SECTION: 4
OBSERVER: MS/KUM

PIECE#	GRAPHIC REPRESENTATION	DRILLING DISTURB.	STRUCTURES	SAMPLES	COLOR	SECTION DESCRIPTION
0						W
150						

INTEGRATED OCEAN DRILLING PROGRAM
VISUAL CORE DESCRIPTION

NO. DATE: 5 11 2008
EXP: 316
SITE/HOLE: C0006F
CORE: 3R
SECTION: 2
OBSERVER: MS/KM

PIECE#	GRAPHIC REPRESENTATION	DRILLING DISTURB.	STRUCTURES	SAMPLES	COLOR
0	WR				
50	WR	X			
100					
150					

SECTION DESCRIPTION

heavily drilled disturbed
(probably due to in situ fractured rock?)
dark greenish gray silty
claystone, slightly fractured

INTEGRATED OCEAN DRILLING PROGRAM VISUAL CORE DESCRIPTION

NO.
 DATE: 1 / 20
 EXP:
 SITE/HOLE:
 CORE: 3 R
 SECTION: 3
 OBSERVER: MS/KLM

	PIECES	GRAPHIC REPRESENTATION	DRILLING DISTURB.	STRUCTURES	SAMPLES	COLOR
0			X X X X			
50						
100						
150						

SECTION DESCRIPTION

INTEGRATED OCEAN DRILLING PROGRAM
VISUAL CORE DESCRIPTION

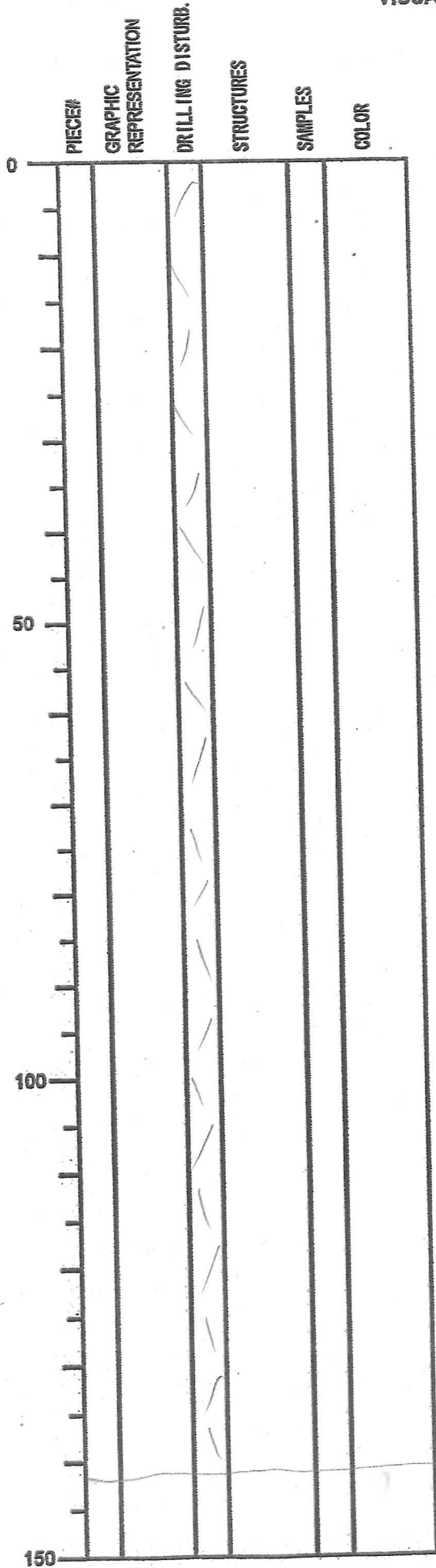
NO.
DATE: 1 / 20
EXP:
SITE/HOLE:
CORE: 3R
SECTION: CC
OBSERVER:

PIECE#	GRAPHIC REPRESENTATION	DRILLING DISTURB.	STRUCTURES	SAMPLES	COLOR
0					
50					
100					
150					

SECTION DESCRIPTION

INTEGRATED OCEAN DRILLING PROGRAM
VISUAL CORE DESCRIPTION

NO.
DATE: 1 109 120 08
EXP: 316
SITE/HOLE: C0006 F
CORE: 4R
SECTION: 1
OBSERVER: MS/KW




SECTION DESCRIPTION

0-141
greenish grey silty clay
Strong drilling disturbance;
coherent fragments @
14-40
55-60
114-120
122-125
130-135
a few fragments show vague
parallel lamin. and
burrows (up to 1-cm diam)

INTEGRATED OCEAN DRILLIGN PROGRAM
VISUAL CORE DESCRIPTION

NO.
DATE: 1 10912008
EXP: 316
SITE/HOLE: C0006F
CORE: 4R
SECTION: 3
OBSERBER:

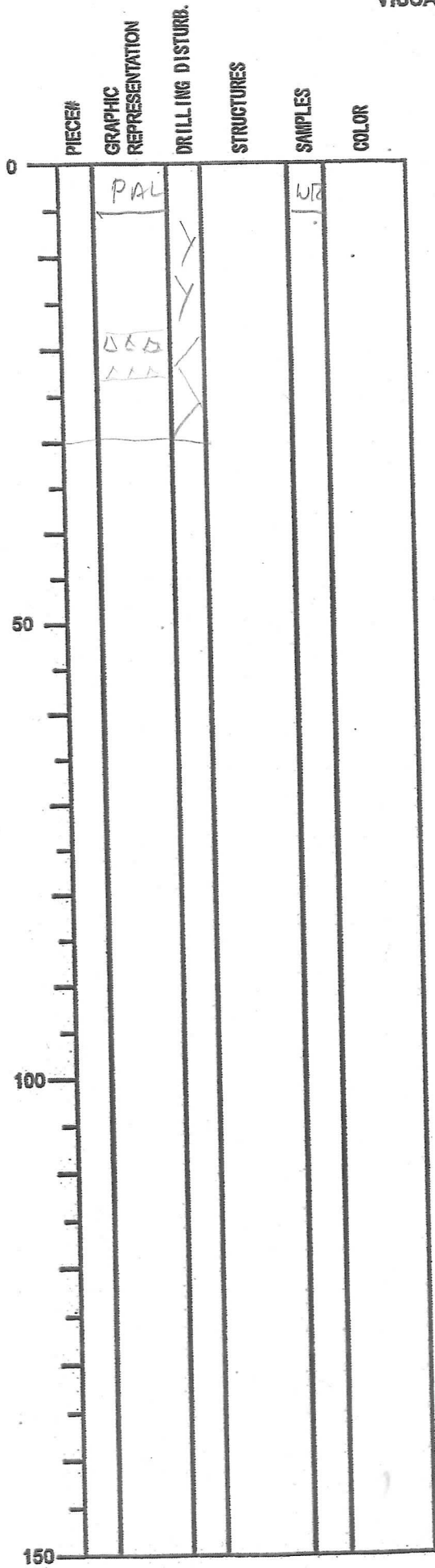
PIECE#	GRAPHIC REPRESENTATION	DRILLING DISTURB.	STRUCTURES	SAMPLES	COLOR
					

SECTION DESCRIPTION

0-13
extreme drilling brecciation
of gray silty clay

INTEGRATED OCEAN DRILLING PROGRAM
VISUAL CORE DESCRIPTION

NO.
DATE: 1 09/20 08
EXP: 316
SITE/HOLE: C0006 F
CORE: 4R^{CC}
SECTION:
OBSERVER:

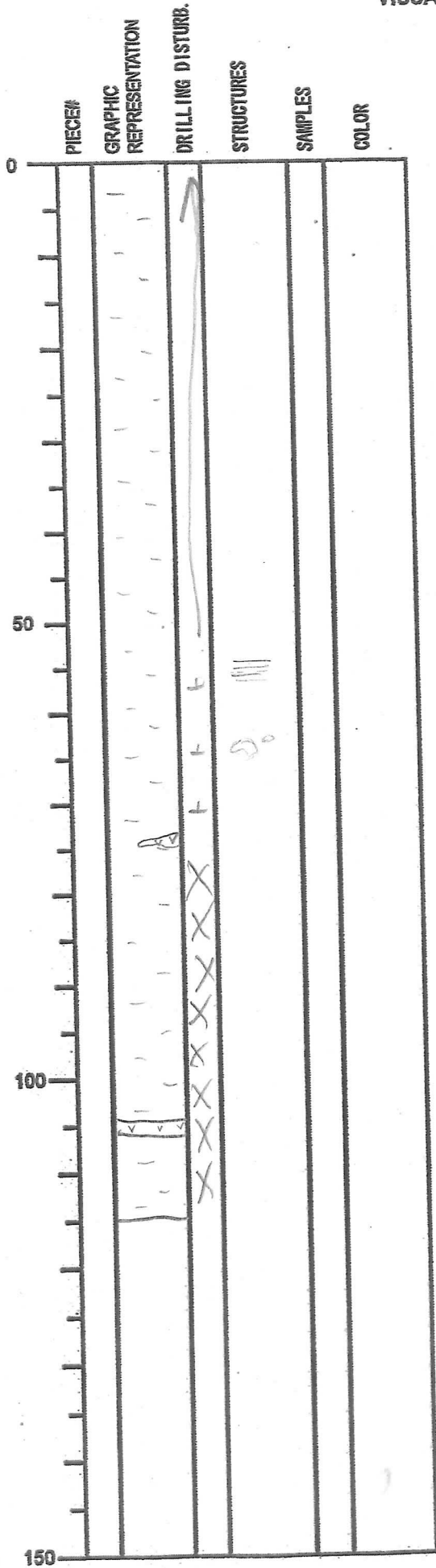


SECTION DESCRIPTION

0-5
extreme drilling disturbance
of gray silty clay
ash @ 19-23

INTEGRATED OCEAN DRILLING PROGRAM
VISUAL CORE DESCRIPTION

NO.
DATE: 10/01/2008
EXP: 316
SITE/HOLE: 00006F
CORE: SR
SECTION: 1
OBSERVER: UN



SECTION DESCRIPTION

dark greenish-gray silty claystone, green
colour banding and mottling/bioturbation
are common.

colour banding

- mottling

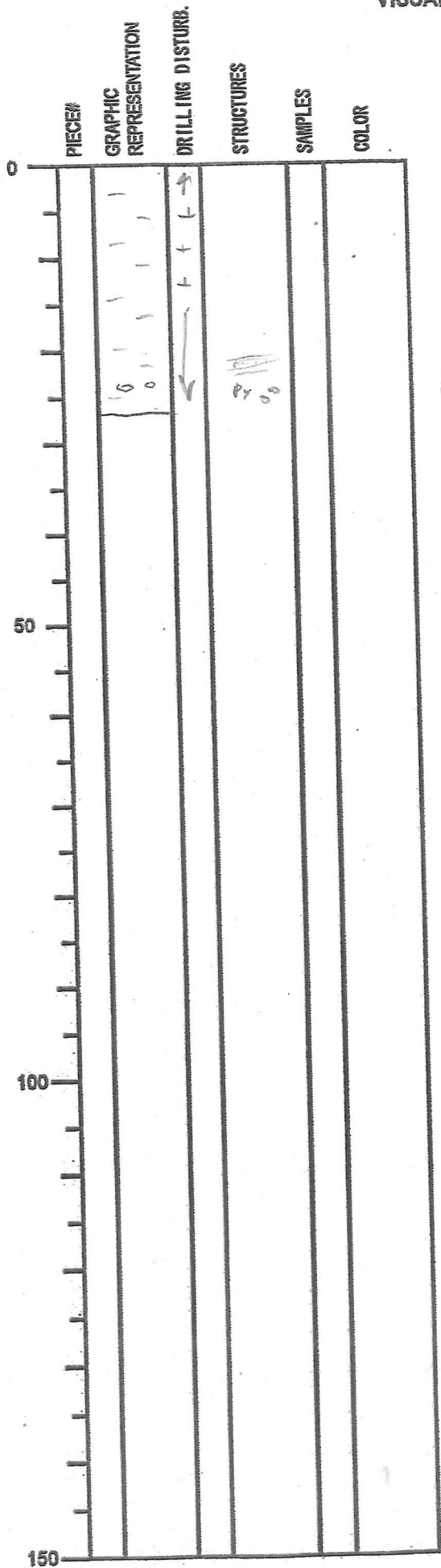
- minor patch of ash - top is mottled.

ash bed with green band near base

XRD samples from whole-round only. WR samples should all be used.

INTEGRATED OCEAN DRILLING PROGRAM
VISUAL CORE DESCRIPTION

NO.
DATE: 10 / 01 / 20 08
EXP: 316
SITE/HOLE: C 0006 F
CORE: SR
SECTION: 2
OBSERVER: UN



SECTION DESCRIPTION

INTEGRATED OCEAN DRILLING PROGRAM
VISUAL CORE DESCRIPTION

NO.
DATE: 10/01/2008
EXP: 3/6
SITE/HOLE: C0006F
CORE: 5R
SECTION: CC (3)
OBSERVER: UN

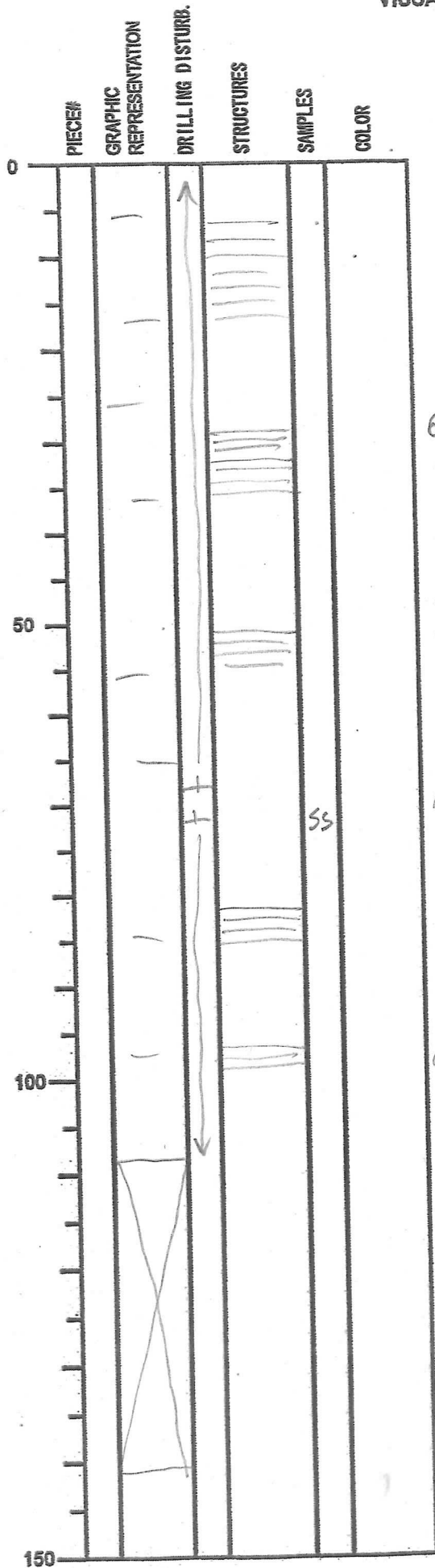
PIECE#	GRAPHIC REPRESENTATION	DRILLING DISTURB.	STRUCTURES	SAMPLES	COLOR
0		↑			
		↑			
		↑			
		↑			
		↑			
		↓			
50					
100					
150					

SECTION DESCRIPTION

- brecciated by drilling but there also appear to be a microbreccia in shatter pieces - fault breccia?

INTEGRATED OCEAN DRILLING PROGRAM
VISUAL CORE DESCRIPTION

NO.
DATE: 10 10 11 20 08
EXP: 316
SITE/HOLE: C0006F
CORE: 6R
SECTION: 1
OBSERVER: CLF



SECTION DESCRIPTION

Greenish-gray silty claystone
with green color bands

Some sponge spicule
bundles plus
abundant small
forams.

Green
color band

Green color
band

Abundant forams

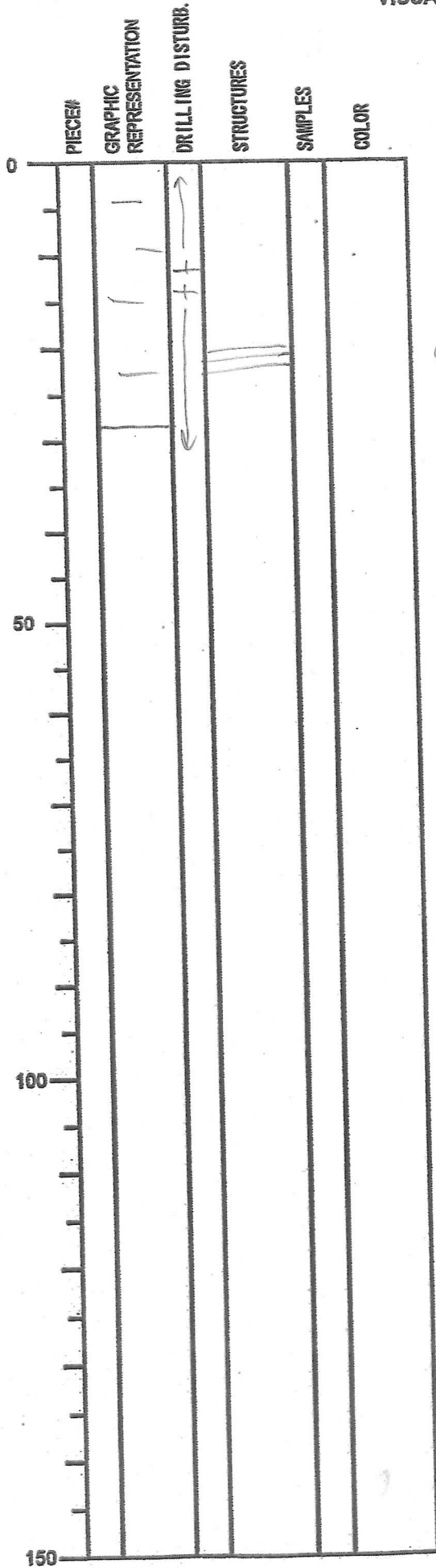
Gr color band

Green color band

IW

INTEGRATED OCEAN DRILLING PROGRAM
VISUAL CORE DESCRIPTION

NO.
DATE: 10 11 20 08
EXP: 316
SITE/HOLE: C0006F
CORE: 6R
SECTION: 1
OBSERVER: CLF



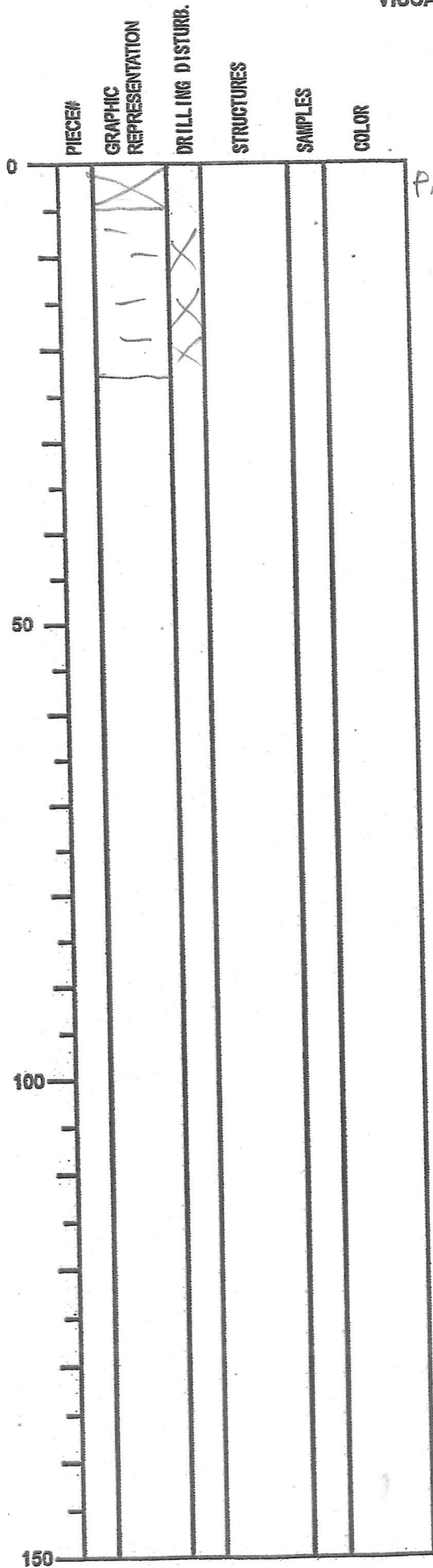
SECTION DESCRIPTION

Silty claystone

Green color band

INTEGRATED OCEAN DRILLING PROGRAM
VISUAL CORE DESCRIPTION

NO.
DATE: 10 10 120
EXP: 316
SITE/HOLE: C0006F
CORE: 6R
SECTION: CC
OBSERVER: CLF

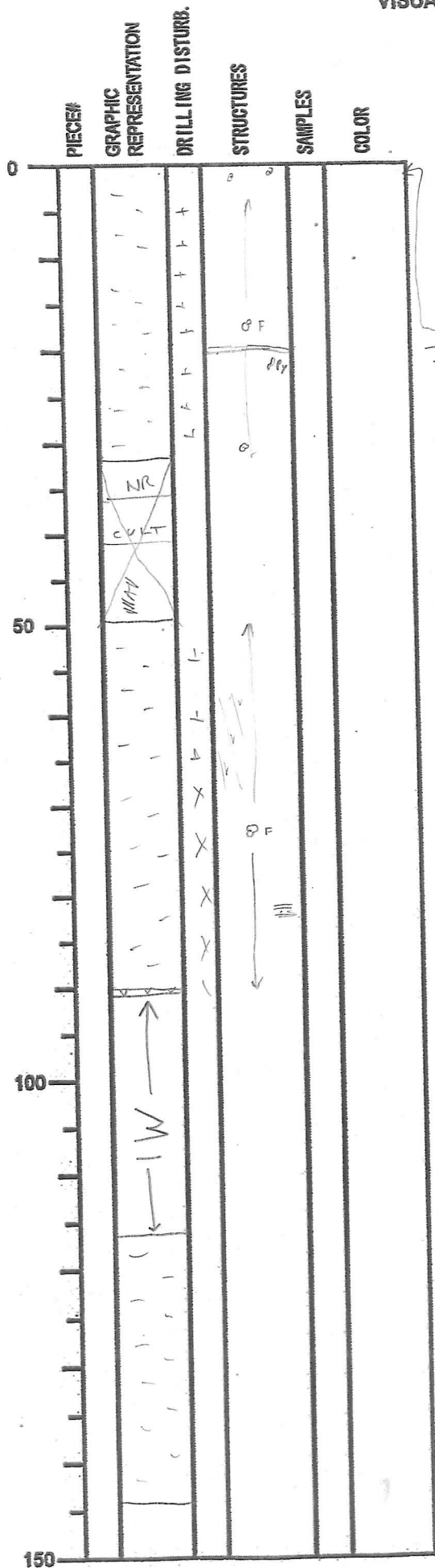


SECTION DESCRIPTION

Brecciated (drilling) greenish-gy
silty claystone

INTEGRATED OCEAN DRILLING PROGRAM
VISUAL CORE DESCRIPTION

NO.
DATE: 10/01/2008
EXP: 316
SITE/HOLE: C0006F
CORE: 7R
SECTION: 1
OBSERVER: UN



SECTION DESCRIPTION

Greenish grey silty clay with green colour banding and abundant foraminifera test and test fragments.

- small ash lapilli - (2-3 mm)
- Black laminae - (D) (fine)
- lyritised burrows.

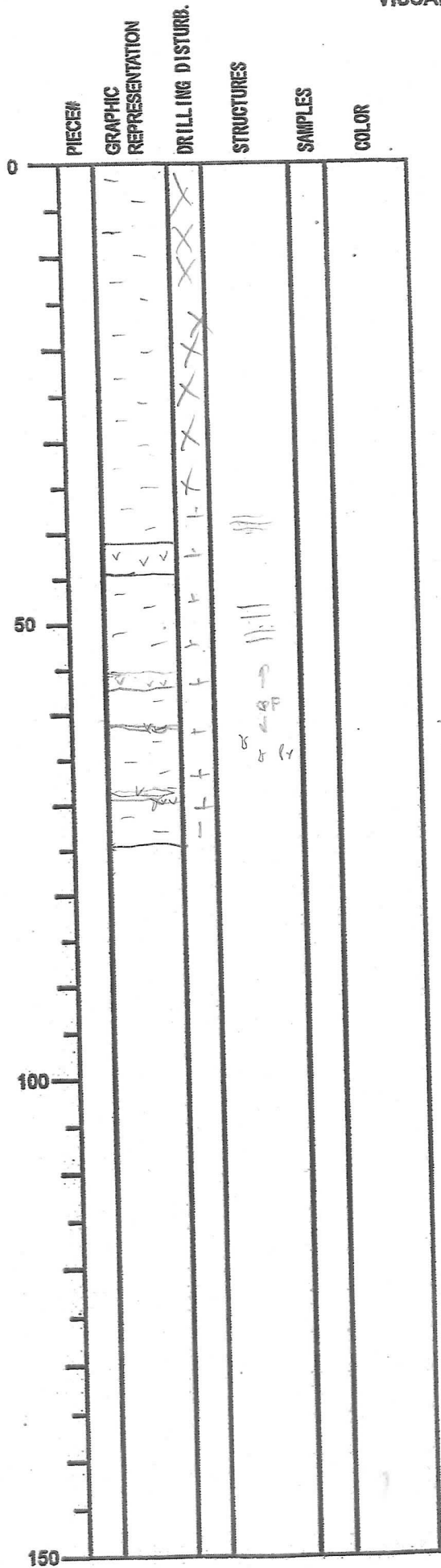
- largest foam - 2mm in diameter.

faulted section (1-3 cm throw)

colour band

INTEGRATED OCEAN DRILLING PROGRAM
VISUAL CORE DESCRIPTION

NO.
DATE: 10/10/2008
EXP: 316
SITE/HOLE: C0006F
CORE: 7R
SECTION: 2
OBSERVER: UN



SECTION DESCRIPTION

colour banding.

-green band with ash-rich in large Fe-Mg minerals.
fynitised borrows.

green band associated with ash. - Green band is ash
to green ash.

INTEGRATED OCEAN DRILLING PROGRAM
VISUAL CORE DESCRIPTION

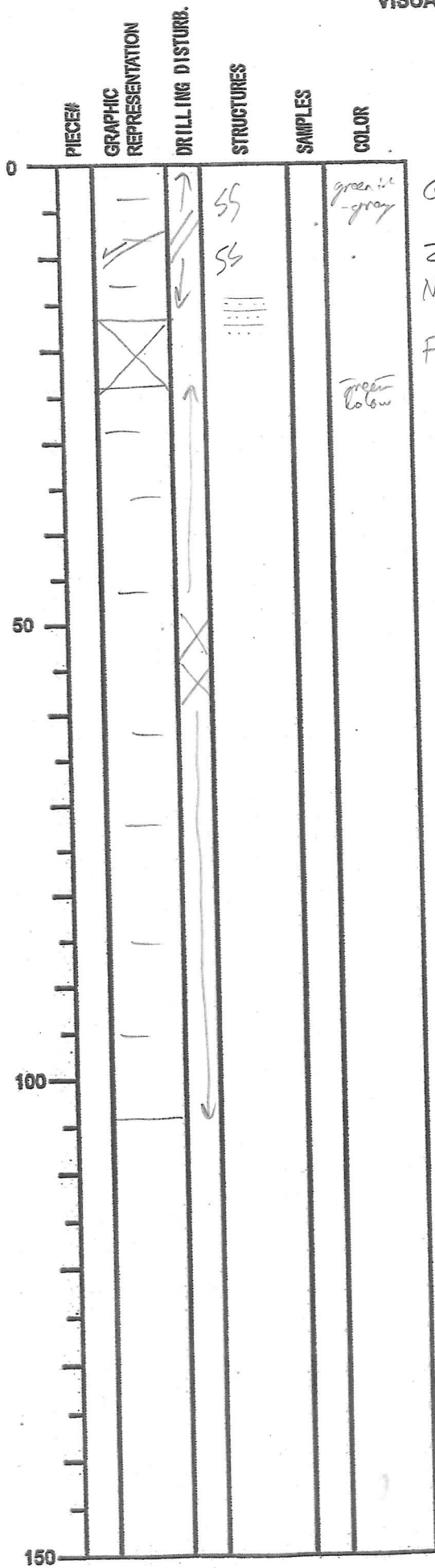
NO.
DATE: 10/01/2008
EXP: 3/6
SITE/HOLE: 20006F
CORE: 7R
SECTION: 3 (CC)
OBSERVER: UN.

PIECE#	GRAPHIC REPRESENTATION	DRILLING DISTURB.	STRUCTURES	SAMPLES	COLOR
0	RAI				
10					
20					
30					
40					
50					
60					
70					
80					
90					
100					
110					
120					
130					
140					
150					

SECTION DESCRIPTION

INTEGRATED OCEAN DRILLING PROGRAM
VISUAL CORE DESCRIPTION

NO.
DATE: 10/01/2008
EXP: 316
SITE/HOLE: C0006F
CORE: 8R
SECTION: 1
OBSERVER: CLF



SECTION DESCRIPTION

Green color bands
Zoophycos
Normal fault
Fred
Green color
Greenish-gy silty claystone ± green color bands moderate bioturbation (Zoophycos)
Drilling breccia (or fault breccia? slickensided surfaces - nodules)

INTEGRATED OCEAN DRILLING PROGRAM
VISUAL CORE DESCRIPTION

NO. _____
DATE: 10 10 20 08
EXP: 316
SITE/HOLE: C0006F
CORE: BK
SECTION: 2
OBSERVER: CLF

PIECE#	GRAPHIC REPRESENTATION	DRILLING DISTURB.	STRUCTURES	SAMPLES	COLOR
0		x			
50		x	6		
100					
150					

SECTION DESCRIPTION

greenish gray silty clay
with ~~dots~~ color banding to molting

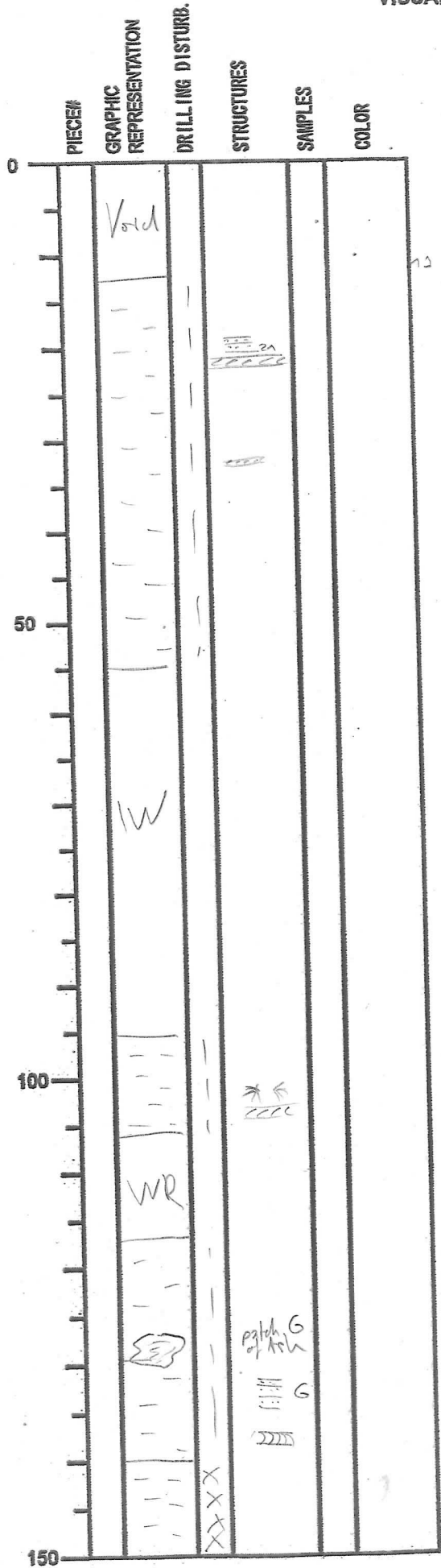
INTEGRATED OCEAN DRILLIGN PROGRAM
VISUAL CORE DESCRIPTION

NO.
DATE: 1 / 20
EXP:
SITE/HOLE:
CORE: BR
SECTION: CC
OBSERBER: MS/KLM

PIECE#	GRAPHIC REPRESENTATION	DRILLING DISTURB.	STRUCTURES	SAMPLES	COLOR	SECTION DESCRIPTION
0						
50						
100						
150						

INTEGRATED OCEAN DRILLING PROGRAM
VISUAL CORE DESCRIPTION

NO. DATE: 10/11/2008
EXP: 316
SITE/HOLE: C0006F
CORE: JR
SECTION: 1
OBSERVER: MS



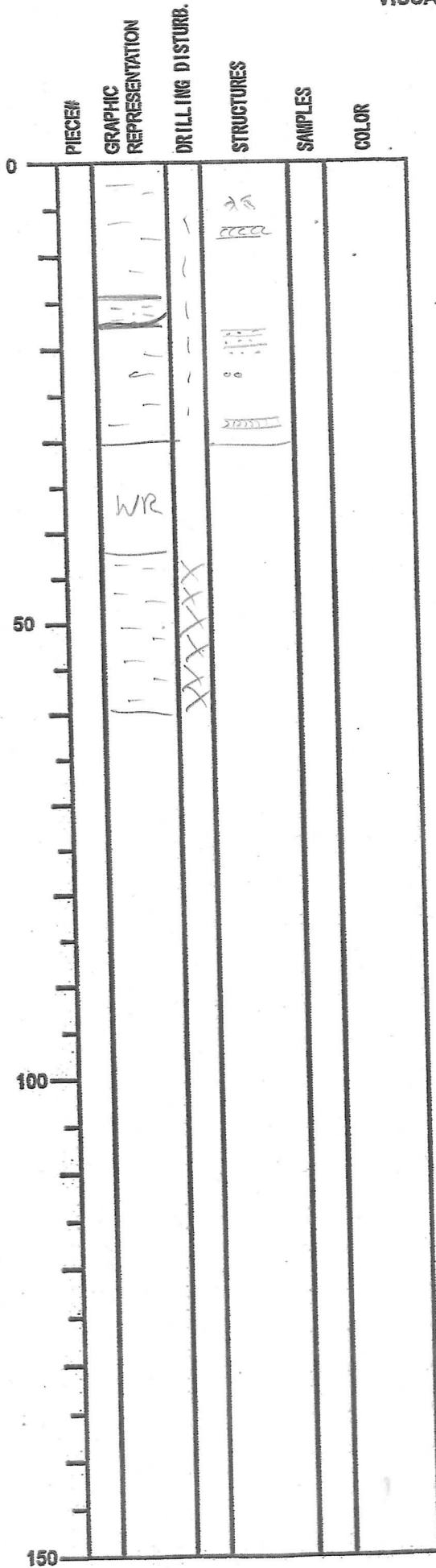
SECTION DESCRIPTION

greenish gray silty claystone
moderately to heavily bioturbated
(Zoophycos and Chondrites)
greenish color sands and silt
mottling (Glauconite?).

greenish halo around light gray filled ? Gorrrow?

INTEGRATED OCEAN DRILLING PROGRAM
VISUAL CORE DESCRIPTION

NO.
DATE: 1 / 20
EXP:
SITE/HOLE:
CORE: 9R
SECTION: 2
OBSERVER: MS



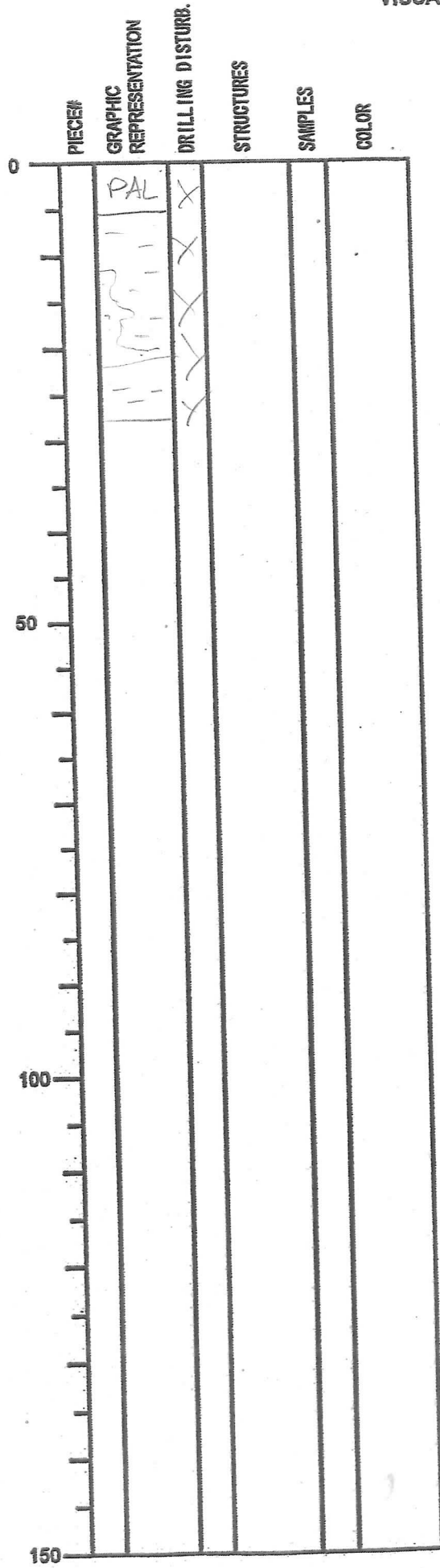
SECTION DESCRIPTION

14-18 homogeneous not bioturbated
→ clayey silt layer

16-18 ? possible erosion surface
on glauconized layer ??

INTEGRATED OCEAN DRILLIGN PROGRAM
VISUAL CORE DESCRIPTION

NO.
DATE: / / 20
EXP:
SITE/HOLE:
CORE: GR
SECTION: CC
OBSERBER: MS



SECTION DESCRIPTION

volcanic ash?

INTEGRATED OCEAN DRILLING PROGRAM
VISUAL CORE DESCRIPTION

NO. DATE: 11/10/2008
EXP: 316
SITE/HOLE: C0006 F
CORE: 10R
SECTION: 1
OBSERVER: MS/KC

PIECE#	GRAPHIC REPRESENTATION	DRILLING DISTURB.	STRUCTURES	SAMPLES	COLOR
0					
L12	WR	WR			
L14D		WR			
50					
100					
150					

SECTION DESCRIPTION

35-53
greenish gray silty clay w/
abundant traces; incl. Zoophy.; color
mottled w/ greenish layers
ash aggregates - lapilli?
near-vert. sigmoidal vein structures

highly fragmented greenish gray
silty clay

slightly coarser sand 74-84cm

95-125
more coherent pieces of greenish
gray silty clay, burrowed & color-
mottled throughout; many agglutinates

INTEGRATED OCEAN DRILLING PROGRAM
VISUAL CORE DESCRIPTION

NO.
DATE: / / 20
EXP:
SITE/HOLE:
CORE: 10R
SECTION: 2
OBSERVER: MS/KUM

PIECE#	GRAPHIC REPRESENTATION	DRILLING DISTURB.	STRUCTURES	SAMPLES	COLOR	SECTION DESCRIPTION
0						to above
50						
100						
150						

INTEGRATED OCEAN DRILLING PROGRAM VISUAL CORE DESCRIPTION

NO. _____
 DATE: 1 / 20
 EXP: _____
 SITE/HOLE: _____
 CORE: 10 R
 SECTION: 3
 OBSERVER: MS/KLM

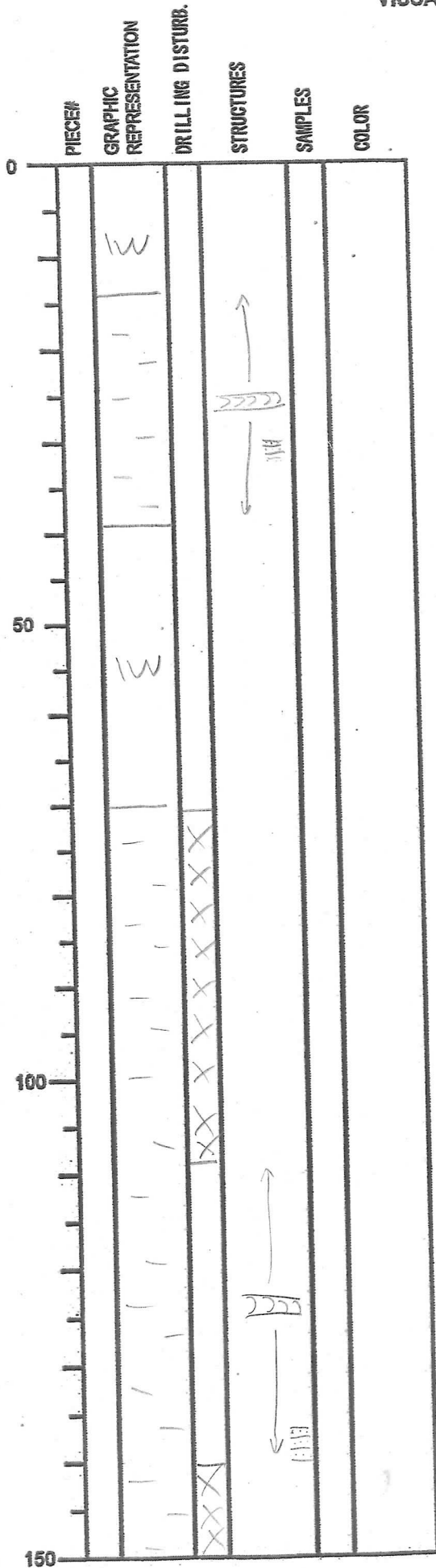
	PIECE#	GRAPHIC REPRESENTATION	DRILLING DISTURB.	STRUCTURES	SAMPLES	COLOR
0		PAL				
50						
100						
150						

SECTION DESCRIPTION

Handwritten: A = 1000

INTEGRATED OCEAN DRILLING PROGRAM
VISUAL CORE DESCRIPTION

NO.
DATE: 10/11/2008
EXP: 3
SITE/HOLE: C000 6F
CORE: 11R
SECTION: 1
OBSERVER: MS/KLM

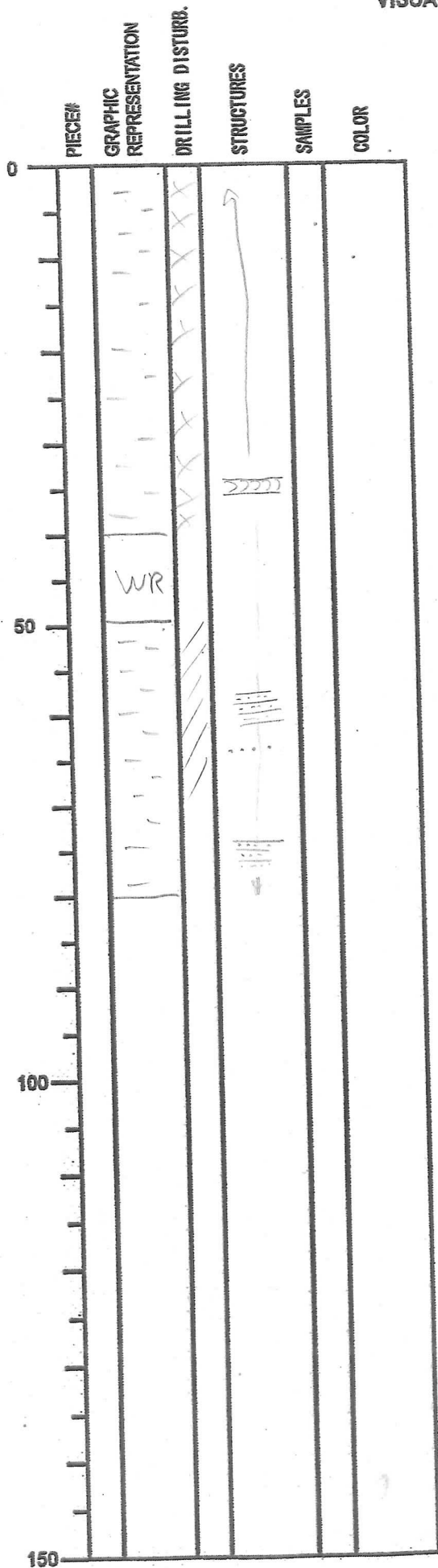


SECTION DESCRIPTION

greenish gray claystone
heavily bioturbated (subhorizontal)
zoophycos every 1-2cm)
greenish to greenishgray mottling
with few greenish color bands
(glaucouite?)

INTEGRATED OCEAN DRILLIGN PROGRAM
VISUAL CORE DESCRIPTION

NO.
DATE: 1 / 20
EXP:
SITE/HOLE:
CORE: MR
SECTION: 2
OBSERBER: MS/KLM



SECTION DESCRIPTION

20 above

INTEGRATED OCEAN DRILLING PROGRAM
VISUAL CORE DESCRIPTION

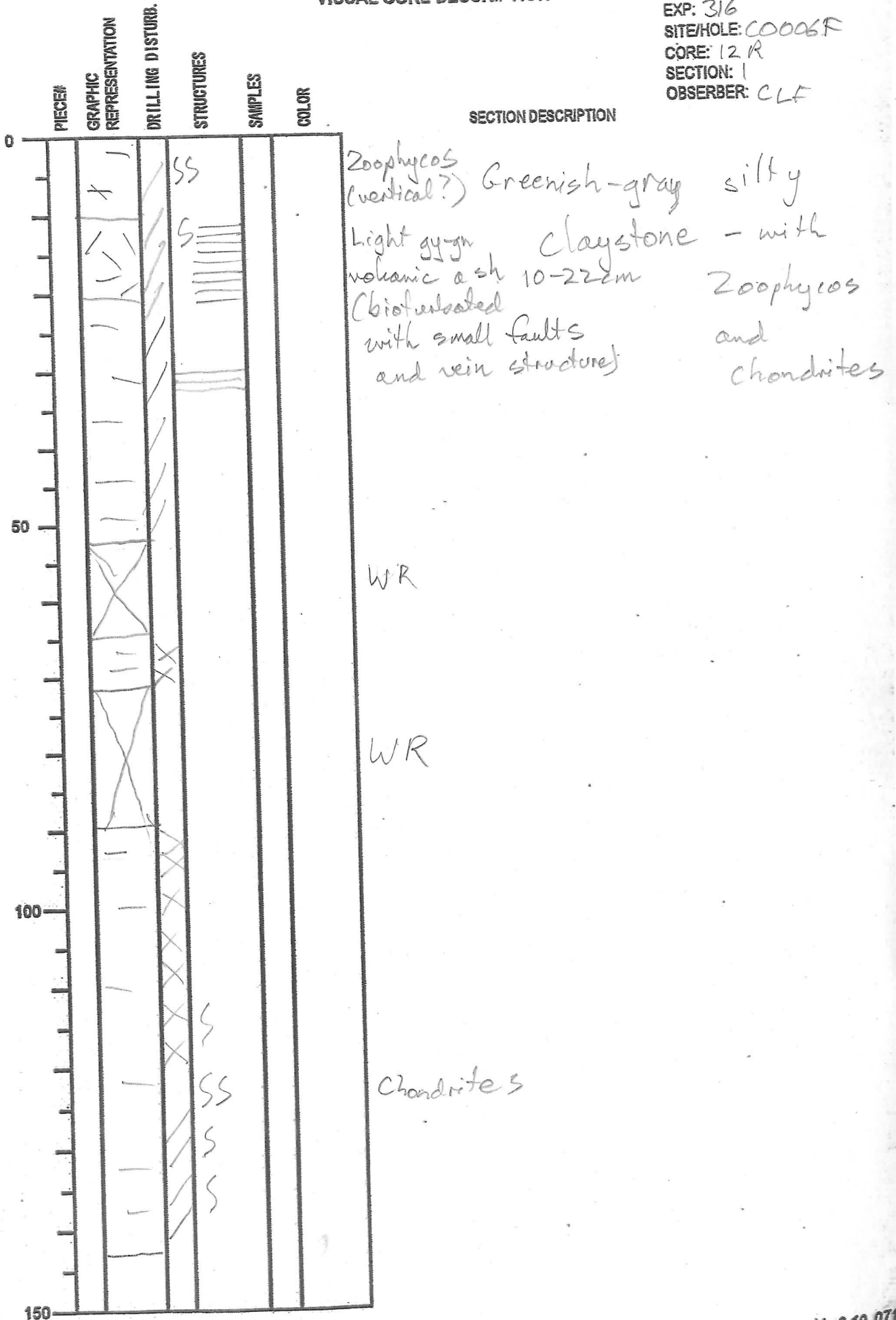
NO.
DATE: / / 20
EXP:
SITE/HOLE:
CORE: 11K
SECTION: CC
OBSERVER: MS/KUM

PIECE#	GRAPHIC REPRESENTATION	DRILLING DISTURB.	STRUCTURES	SAMPLES	COLOR
0	WR				
50					
100					
150					

SECTION DESCRIPTION

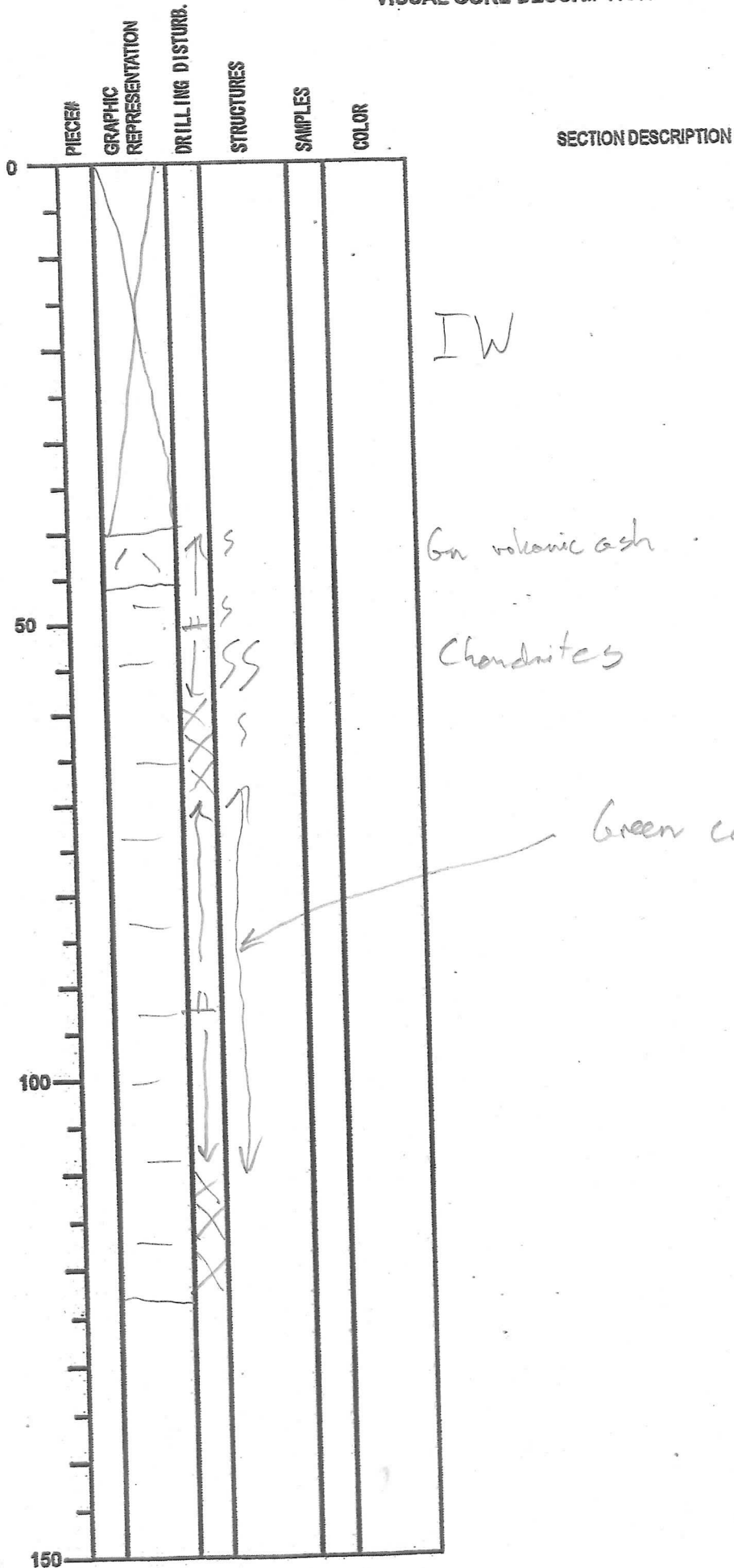
INTEGRATED OCEAN DRILLING PROGRAM
VISUAL CORE DESCRIPTION

NO.
DATE: 11/10/2008
EXP: 316
SITE/HOLE: C0006F
CORE: 12R
SECTION: 1
OBSERVER: CLF



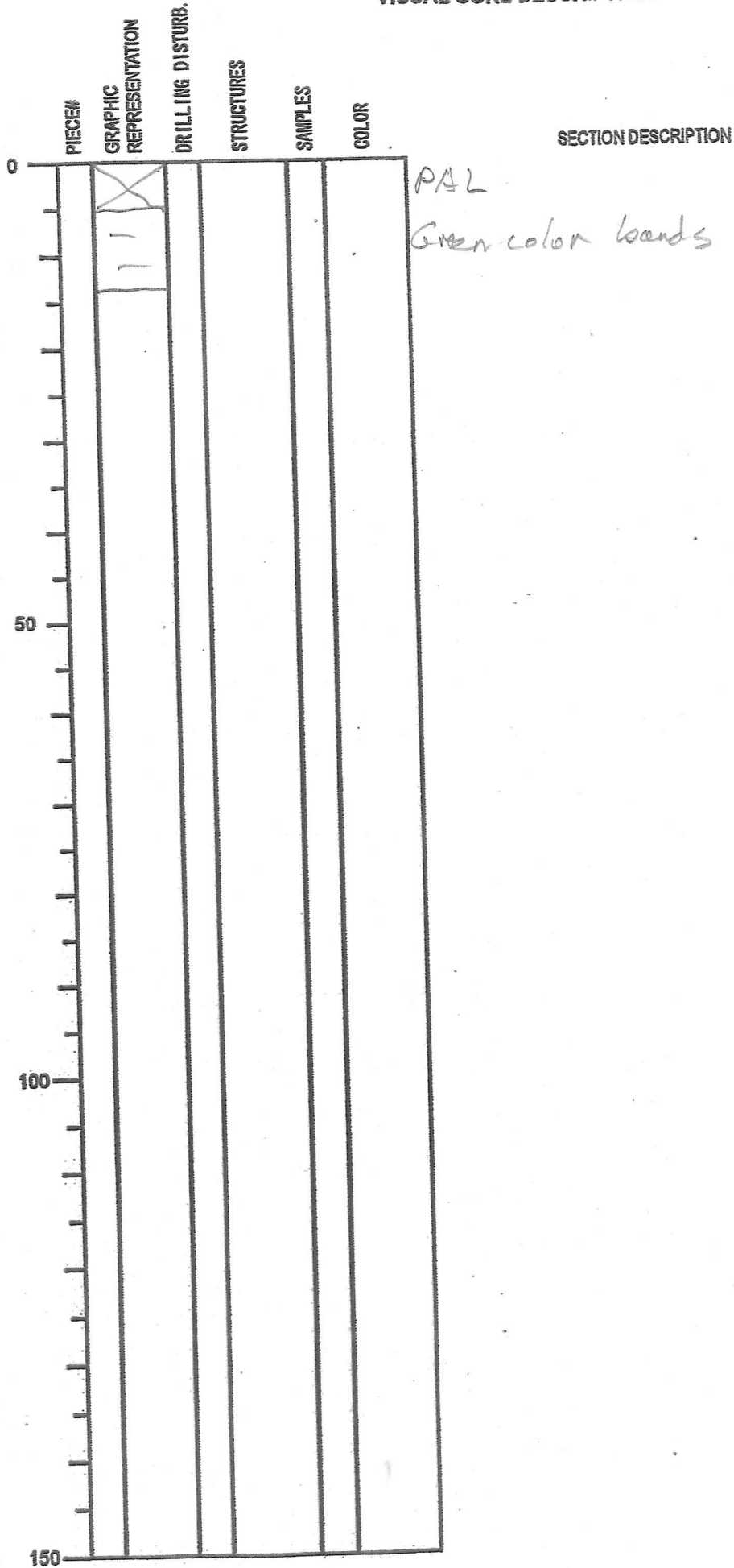
INTEGRATED OCEAN DRILLING PROGRAM
VISUAL CORE DESCRIPTION

NO.
DATE: 11 10/12008
EXP: 316
SITE/HOLE: C0006 F
CORE: 12R
SECTION: 2
OBSERVER: CLF



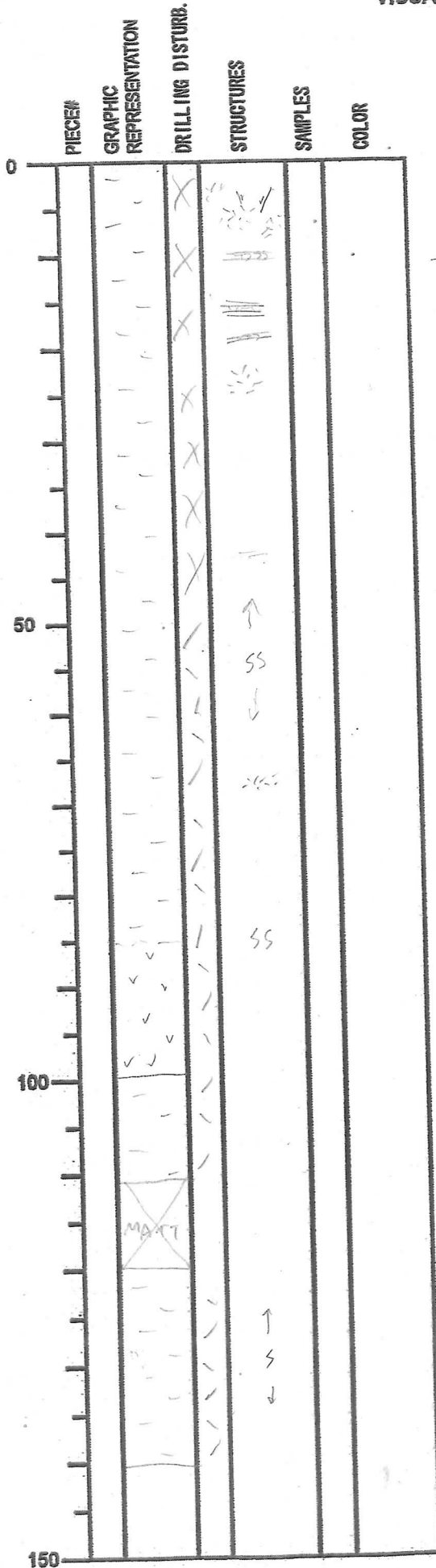
INTEGRATED OCEAN DRILLING PROGRAM
VISUAL CORE DESCRIPTION

NO.
DATE: 11 10 11 20 02.
EXP: 316
SITE/HOLE: C10006F
CORE: 12R
SECTION: CC
OBSERVER: CLF



INTEGRATED OCEAN DRILLING PROGRAM
VISUAL CORE DESCRIPTION

NO.
DATE: 11/01/2008
EXP: 3/6
SITE/HOLE: C0006F
CORE: 13R
SECTION: 1
OBSERVER: VN



SECTION DESCRIPTION

Greenish-grey silty claystone with grey-white volcanic ash layers. Disturbance is moderate-heavy in places.
-agglutinated zoophytes, abundant chondrites - microfossils appear to be mostly normal.
-colour banding (green) - glauconitic layers.

occasional dark grey laminations

volcanic ash less indistinct here due to heavy disturbance

INTEGRATED OCEAN DRILLING PROGRAM
VISUAL CORE DESCRIPTION

NO.
DATE: 11 / 01 / 20 08
EXP: 316
SITE/HOLE: C 006 6F
CORE: 13R
SECTION: 2
OBSERVER: UN

PIECE#	GRAPHIC REPRESENTATION	DRILLING DISTURB.	STRUCTURES	SAMPLES	COLOR
0					
	W				
50			SS		
			SS		
100			SS		
150					

SECTION DESCRIPTION

- fractured to ashstone
Dolomite

- green glauconitic nodules

rotted

INTEGRATED OCEAN DRILLING PROGRAM
VISUAL CORE DESCRIPTION

NO.
DATE: 01/01/2008
EXP: 316
SITE/HOLE: 0006F
CORE: 13R
SECTION: 3(22)
OBSERVER: UN

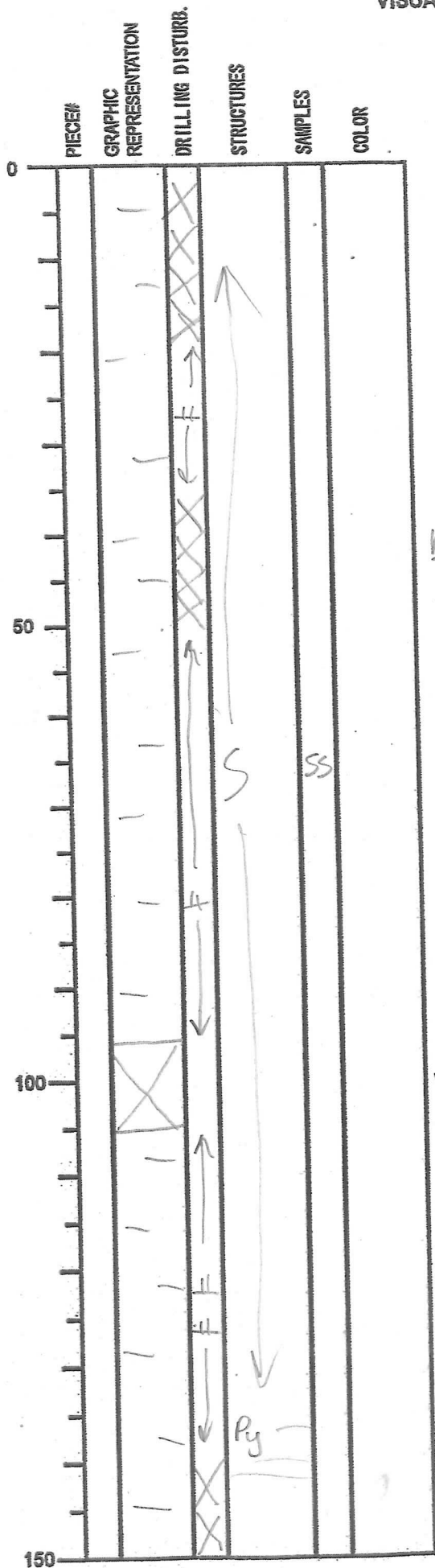
PIECE#	GRAPHIC REPRESENTATION	DRILLING DISTURB.	STRUCTURES	SAMPLES	COLOR
		X	↑		
		X	SS		
		X	SSSS		
		X			
	PAL				

SECTION DESCRIPTION

closely spaced bed structures

INTEGRATED OCEAN DRILLING PROGRAM
VISUAL CORE DESCRIPTION

NO.
DATE: 11/10/12 08.
EXP: 316
SITE/HOLE: C0006F
CORE: 14R
SECTION: 1
OBSERVER: CLR



SECTION DESCRIPTION

Greenish-gy silty
claystone

± some burrows,
pyrite, gn color
bands.

Dispersed ash

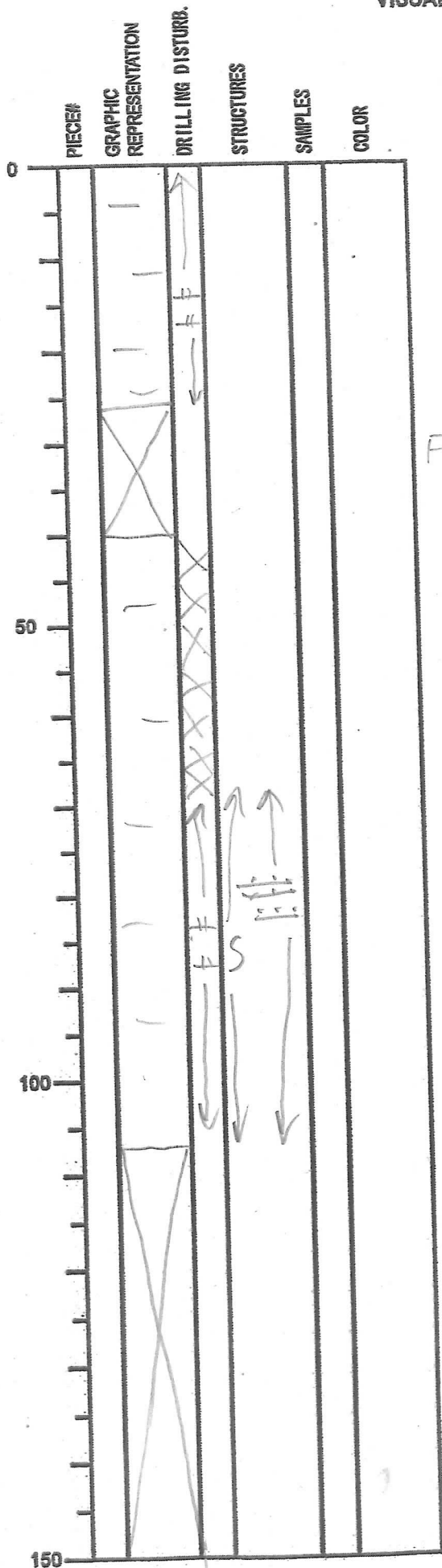
Highly fractured

WR

Pyrite vein/lens
Color bands

INTEGRATED OCEAN DRILLING PROGRAM
VISUAL CORE DESCRIPTION

NO.
DATE: 11/12/08
EXP: 316
SITE/HOLE: C0006F
CORE: 14R
SECTION: 2
OBSERVER: CLF



SECTION DESCRIPTION

Fred

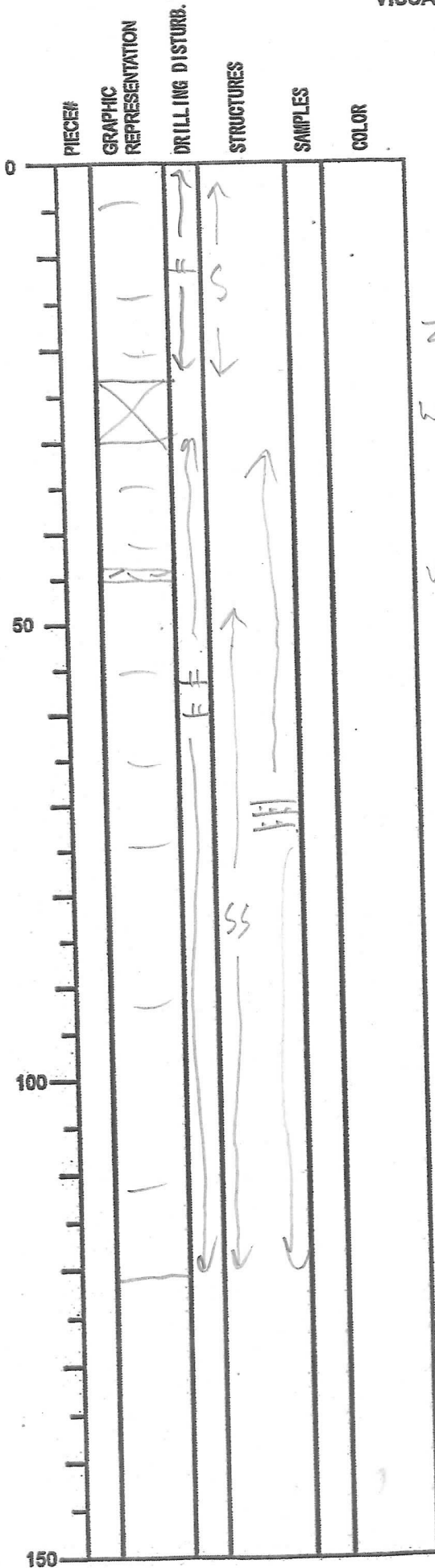
Green color bands

Normal fault

IW

INTEGRATED OCEAN DRILLING PROGRAM
VISUAL CORE DESCRIPTION

NO.
DATE: 11/11/2008
EXP: 316
SITE/HOLE: C0006
CORE: 14R
SECTION: 3
OBSERVER: CLF



SECTION DESCRIPTION

Silty claystone
bioturbated.
Zoophycos
WR
Volcanic ash 44-45 cm
Green color bands

INTEGRATED OCEAN DRILLING PROGRAM
VISUAL CORE DESCRIPTION

NO.
DATE: 11/10/2008
EXP: 316
SITE/HOLE: C0006R
CORE: 14R
SECTION: CL
OBSERVER: CLF

PIECE#	GRAPHIC REPRESENTATION	DRILLING DISTURB.	STRUCTURES	SAMPLES	COLOR

SECTION DESCRIPTION

Silty claystone
burrows + pyrite

INTEGRATED OCEAN DRILLING PROGRAM
VISUAL CORE DESCRIPTION

NO.
DATE: ~~11~~ 11 / 2008
EXP: 316
SITE/HOLE: C0006 E
CORE: 15R
SECTION: 1
OBSERVER: MSJLW

PIECE#	GRAPHIC REPRESENTATION	DRILLING DISTURB.	STRUCTURES	SAMPLES	COLOR
0					
	W				
50					
100	WR				
150					

SECTION DESCRIPTION

greenish gray silty clay
moderately indurated with zoophytes
and chondrites

INTEGRATED OCEAN DRILLIGN PROGRAM
VISUAL CORE DESCRIPTION

NO.
DATE: 1 / 20
EXP:
SITE/HOLE:
CORE: 15R
SECTION: 2
OBSERBER: MS/KLM

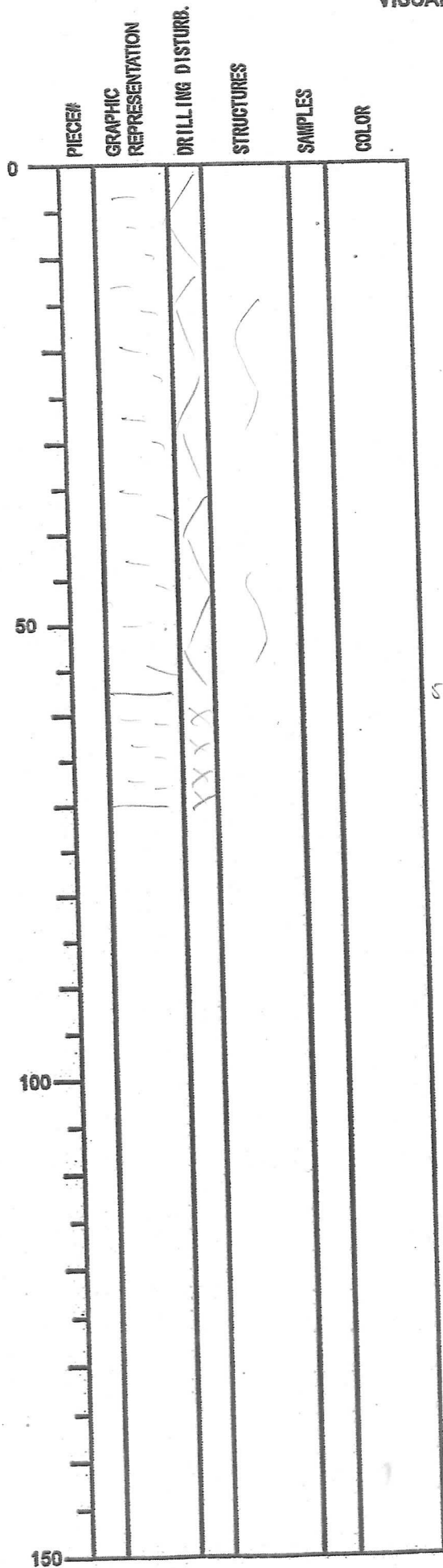
PIECE#	GRAPHIC REPRESENTATION	DRILLING DISTURB.	STRUCTURES	SAMPLES	COLOR
0					
50	WR				
100					
150					

SECTION DESCRIPTION

75
84

INTEGRATED OCEAN DRILLING PROGRAM
VISUAL CORE DESCRIPTION

NO.
DATE: 1 / 20
EXP:
SITE/HOLE:
CORE: 15R
SECTION: 3
OBSERVER: MS/KLM



SECTION DESCRIPTION

57

light gray to greenish gray
contains more abundant coccoliths

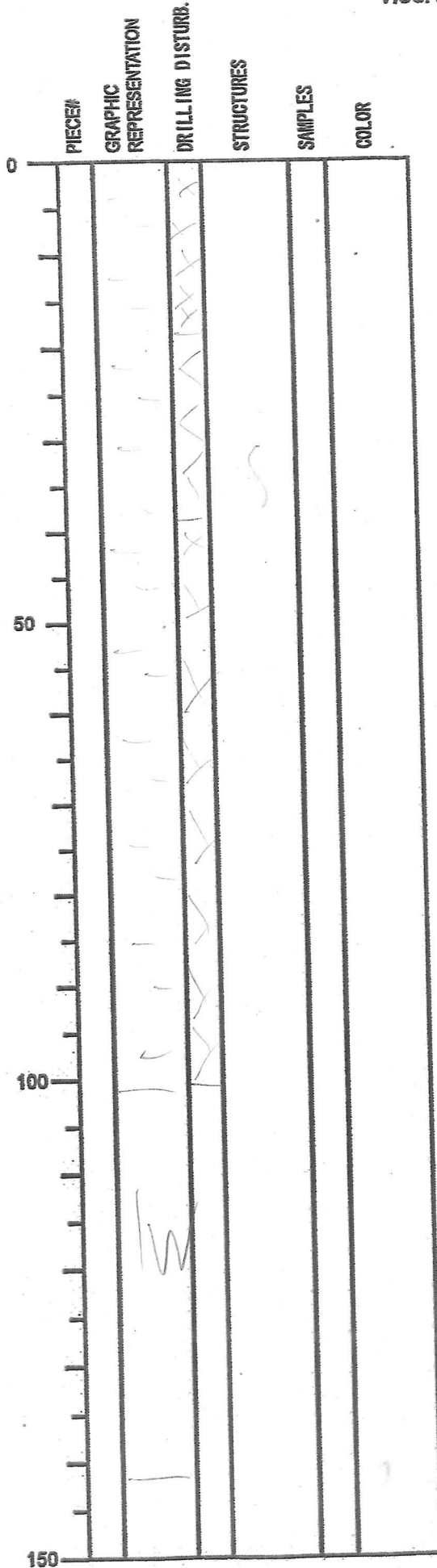
INTEGRATED OCEAN DRILLIGN PROGRAM
VISUAL CORE DESCRIPTION

NO.
DATE: / / 20
EXP:
SITE/HOLE:
CORE: 15R
SECTION: CC
OBSERBER: MS/KCM

PIECE#	GRAPHIC REPRESENTATION	DRILLING DISTURB.	STRUCTURES	SAMPLES	COLOR	SECTION DESCRIPTION
0	PAL					
50						
100						
150						

INTEGRATED OCEAN DRILLING PROGRAM
VISUAL CORE DESCRIPTION

NO.
DATE: 11/11/2008
EXP: 31
SITE/HOLE: C0006F
CORE: 16R
SECTION: 1
OBSERVER: MS/KLM



SECTION DESCRIPTION

heavily fractured and drilling disturbed
greenish gray silty claystone
only one coherent piece between 30
and 34 cm showing moderate porosity
(porphyco=)

INTEGRATED OCEAN DRILLIGN PROGRAM
VISUAL CORE DESCRIPTION

NO.
DATE: 1 / 20
EXP:
SITE/HOLE:
CORE: 16R
SECTION: CC
OBSERBER: MS / km

PIECE#	GRAPHIC REPRESENTATION	DRILLING DISTURB.	STRUCTURES	SAMPLES	COLOR
0					
50					
100					
150					

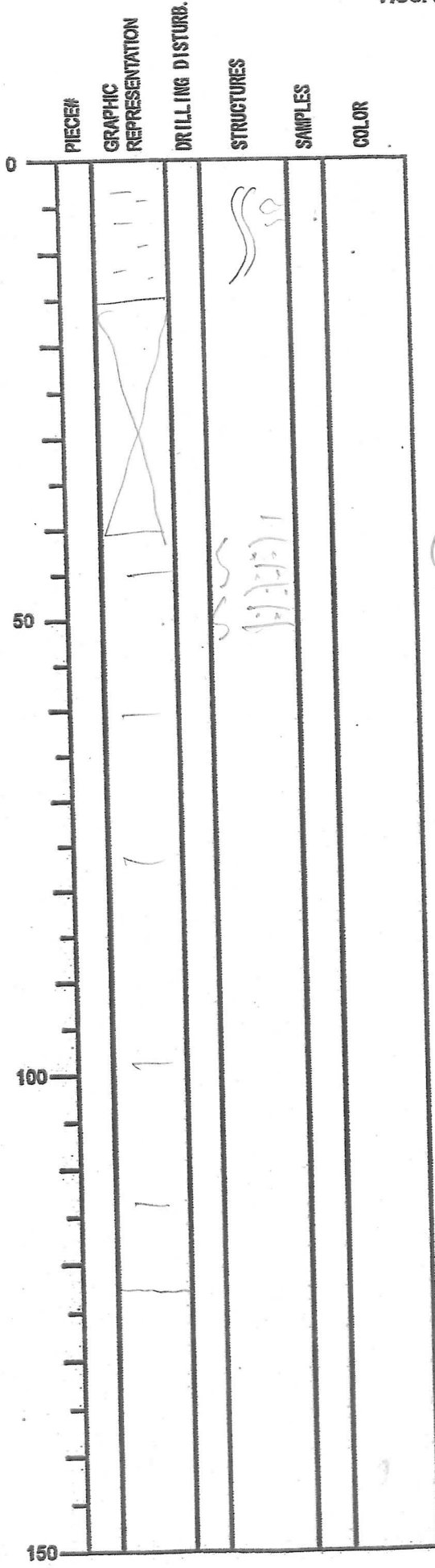
SECTION DESCRIPTION

Greenishgray silty
claystone

IW

INTEGRATED OCEAN DRILLING PROGRAM
VISUAL CORE DESCRIPTION

NO.
DATE: 11/11/2008
EXP: 316
SITE/HOLE: C0006F
CORE: 17
SECTION: 1
OBSERVER: MS



SECTION DESCRIPTION

Silty claystone

1W

Fault breccia

Green color bands

57-123 cm

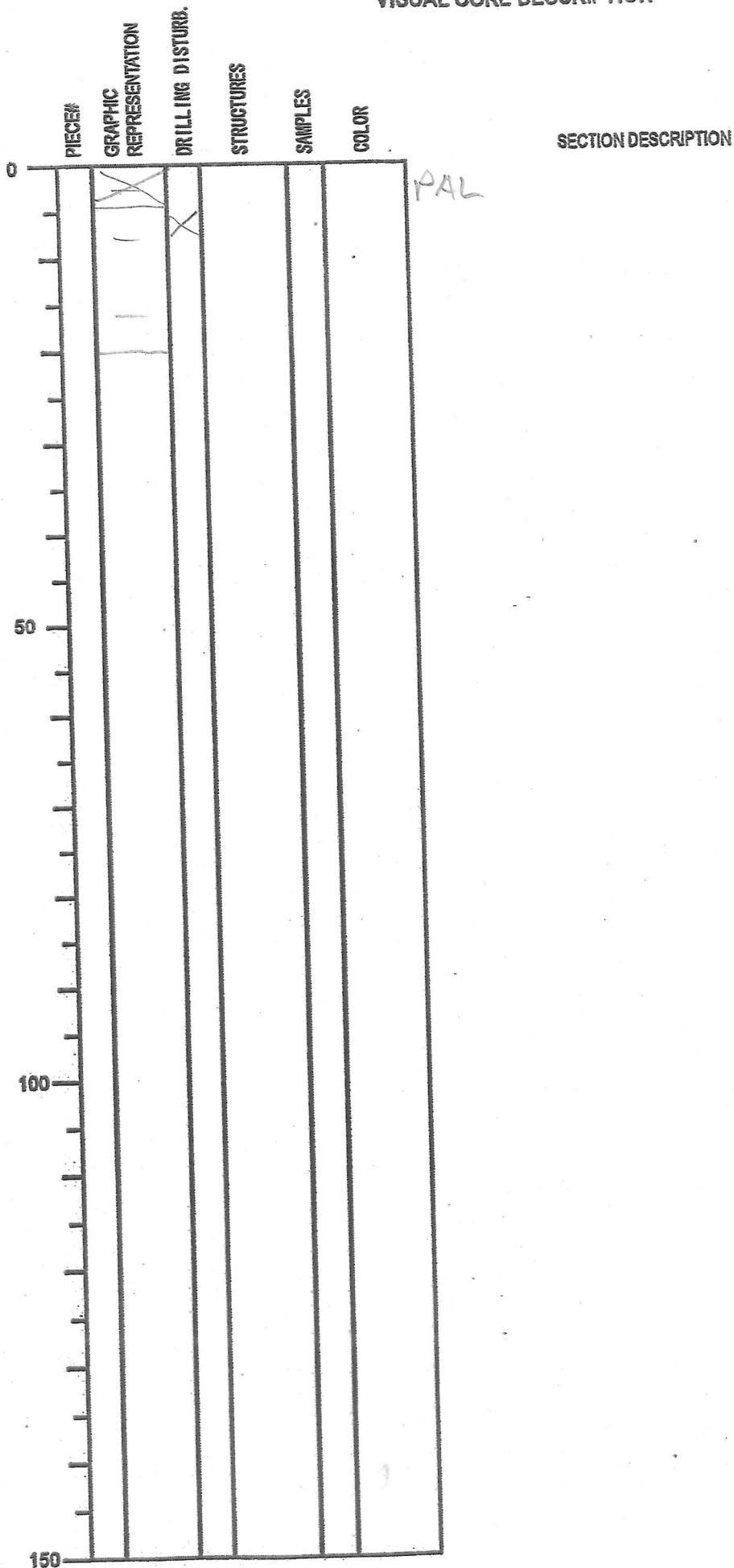
INTEGRATED OCEAN DRILLIGN PROGRAM
VISUAL CORE DESCRIPTION

NO.
DATE: 12 10 11 20 08
EXP: 316
SITE/HOLE: C0006F
CORE: 17
SECTION: 2
OBSERBER: CLF

PIECE#	GRAPHIC REPRESENTATION	DRILLING DISTURB.	STRUCTURES	SAMPLES	COLOR	SECTION DESCRIPTION
0						Silty claystone highly brecciated (Fault breccia)
50						
100						
150						

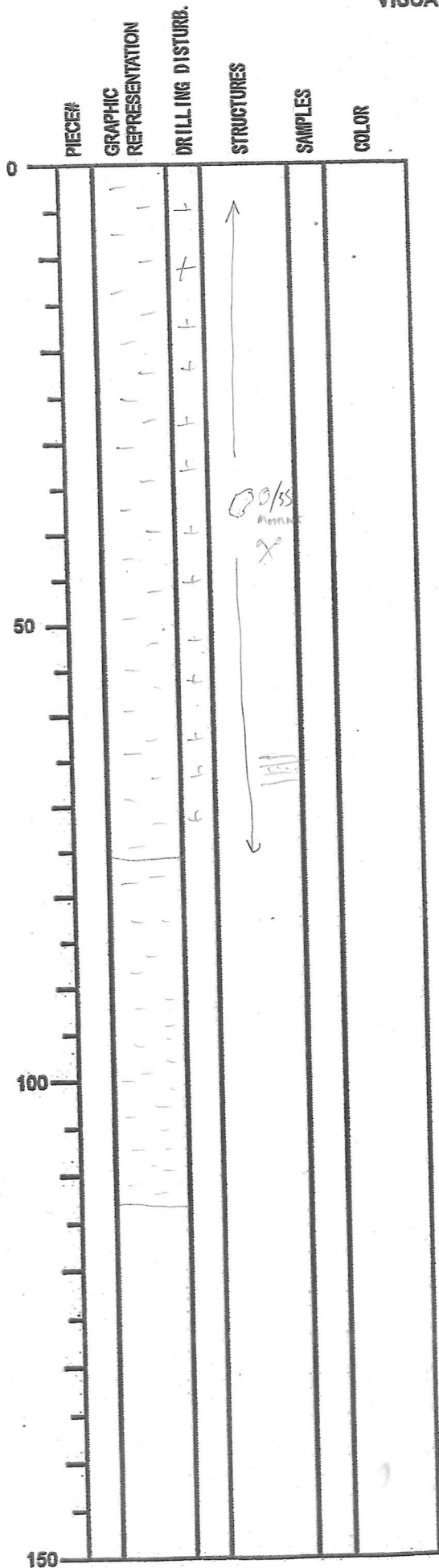
INTEGRATED OCEAN DRILLING PROGRAM
VISUAL CORE DESCRIPTION

NO.
DATE: 12/10/2008
EXP: 316
SITE/HOLE: C0006F
CORE: 17R
SECTION: CC
OBSERVER: CLF



INTEGRATED OCEAN DRILLING PROGRAM
VISUAL CORE DESCRIPTION

NO.
DATE: 12/01/2008
EXP: 3/6
SITE/HOLE: C0006F
CORE: 18R
SECTION: 1
OBSERVER: UN



SECTION DESCRIPTION

Dark greenish-gray silty claystone, heavily
bioturbated/mottled

High angle deformation bands are common.

Discontinuous green color band, mottled appearance

- sponge spicule burrows.

Flakes of organic matter common throughout.

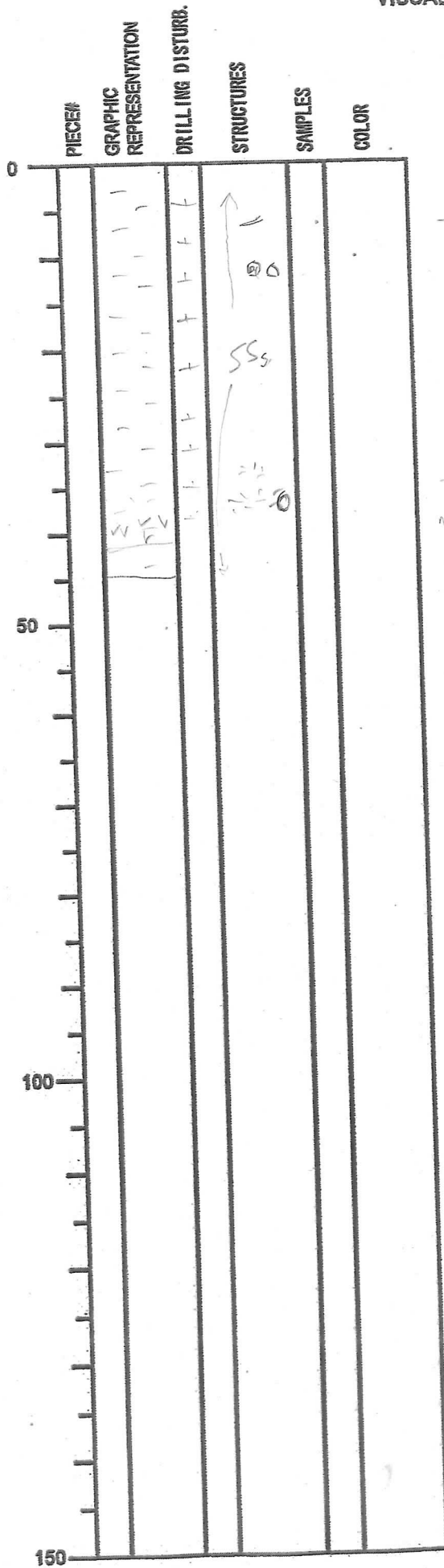
75-113

hot cut, natural split

dark greenish-gray silty claystone,

INTEGRATED OCEAN DRILLING PROGRAM
VISUAL CORE DESCRIPTION

NO.
DATE: 12/01/2008
EXP: 316
SITE/HOLE: C0006F
CORE: 18R
SECTION: 2
OBSERVER: UN



SECTION DESCRIPTION

as previous.
-pyritized, sub-horizontal burrows - unidentified.

-chondrites burrows
mixed ash + silty clay, heavily bioturbated
py-nodes @ 11, 13, 40

INTEGRATED OCEAN DRILLING PROGRAM
VISUAL CORE DESCRIPTION

NO.
DATE: 12/01/2008
EXP: 316
SITE/HOLE: C0006F
CORE: 18R
SECTION: 5(CC)
OBSERVER: UN

PIECE#	GRAPHIC REPRESENTATION	DRILLING DISTURB.	STRUCTURES	SAMPLES	COLOR	SECTION DESCRIPTION
0	PAL					
50						
100						
150						

Change in colour and ash content between
have and 19R?

INTEGRATED OCEAN DRILLING PROGRAM
VISUAL CORE DESCRIPTION

NO.
DATE: 12 11 2008
EXP: 316
SITE/HOLE: C00062
CORE: 10R
SECTION: 1
OBSERVER: MS/KCN

PIECE	GRAPHIC REPRESENTATION	DRILLING DISTURB.	STRUCTURES	SAMPLES	COLOR
0					
50					
100					
150					

SECTION DESCRIPTION

~~homogeneous~~ to slightly bioturbated (partly mottled)
gray-greenish gray silty claystone

(greenish nodule at 4cm
1cm diameter
with greenish halo
=> borrow? nodule?) (o) => T

occasionally agglutinated white specks

91 agglutinated sand speck borrow PM

INTEGRATED OCEAN DRILLING PROGRAM
VISUAL CORE DESCRIPTION

NO.
DATE: / / 20
EXP:
SITE/HOLE:
CORE: 19R
SECTION: 2
OBSERVER: RLS / KLM

0	PIECE#	GRAPHIC REPRESENTATION	DRILLING DISTURB.	STRUCTURES	SAMPLES	COLOR
0						
10						
20						
30						
40						
50						
60						
70						
80						
90						
100						
110						
120						
130						
140						
150						

SECTION DESCRIPTION

INTEGRATED OCEAN DRILLIGN PROGRAM
VISUAL CORE DESCRIPTION

NO.
DATE: 1 / 20
EXP:
SITE/HOLE:
CORE: 19R
SECTION: 3
OBSERBER: ms/km

PIECE#	GRAPHIC REPRESENTATION	DRILLING DISTURB.	STRUCTURES	SAMPLES	COLOR
0					
50	WR				
100	lw				
150					

SECTION DESCRIPTION

27 greenish mottling

INTEGRATED OCEAN DRILLING PROGRAM
VISUAL CORE DESCRIPTION

NO.
DATE: 1 / 20
EXP:
SITE/HOLE:
CORE: 19R
SECTION: 4
OBSERVER: MS/KLM

PIECE#	GRAPHIC REPRESENTATION	DRILLING DISTURB.	STRUCTURES	SAMPLES	COLOR
0					
			P/P		
50					
			P		
			P		
100					
150					

SECTION DESCRIPTION

P_y - nodules. 0.5 cm in diameter

INTEGRATED OCEAN DRILLING PROGRAM
VISUAL CORE DESCRIPTION

NO.
DATE: / / 20
EXP:
SITE/HOLE:
CORE: 13R
SECTION: 5
OBSERVER: MS/KLM

0	PIECE	GRAPHIC REPRESENTATION	DRILLING DISTURB.	STRUCTURES	SAMPLES	COLOR
0						
5						
10						
15						
20						
25						
30						
35						
40						
45						
50						
55						
60						
65						
70						
75						
80						
85						
90						
95						
100						
105						
110						
115						
120						
125						
130						
135						
140						
145						
150						

SECTION DESCRIPTION

INTEGRATED OCEAN DRILLING PROGRAM
VISUAL CORE DESCRIPTION

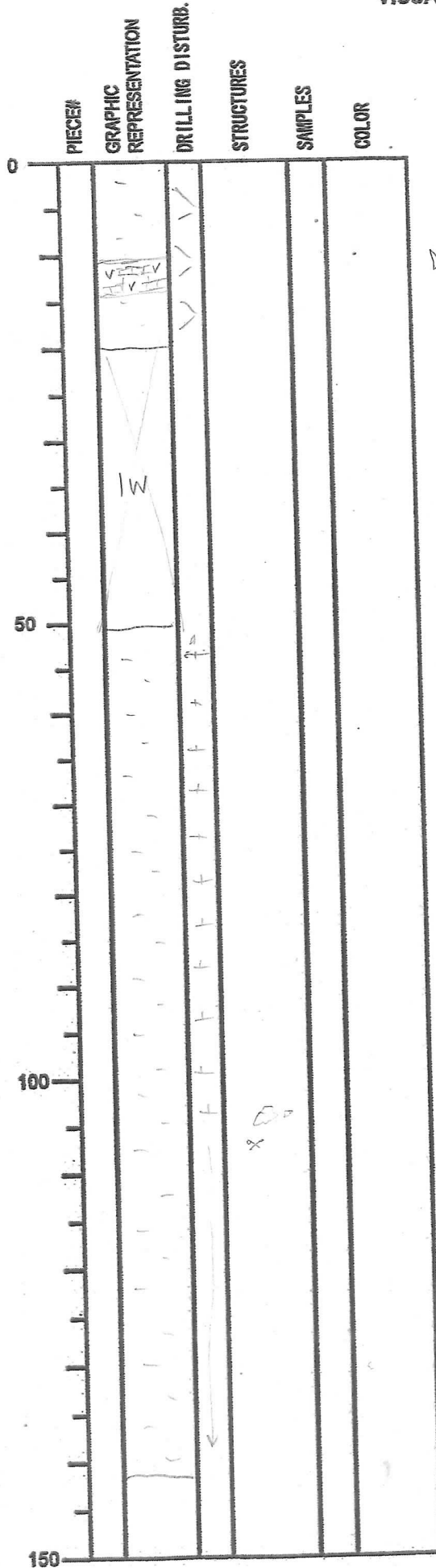
NO.
DATE: / / 20
EXP:
SITE/HOLE:
CORE: 19R
SECTION: EC
OBSERVER:

PIECE#	GRAPHIC REPRESENTATION	DRILLING DISTURB.	STRUCTURES	SAMPLES	COLOR
0					
	WR		3		
	PAL				
50					
100					
150					

SECTION DESCRIPTION

**INTEGRATED OCEAN DRILLING PROGRAM
VISUAL CORE DESCRIPTION**

NO.
DATE: 13 10 / 2008
EXP: 316
SITE/HOLE: C0006F
CORE: ZOR
SECTION: 1
OBSERVER: UN



SECTION DESCRIPTION

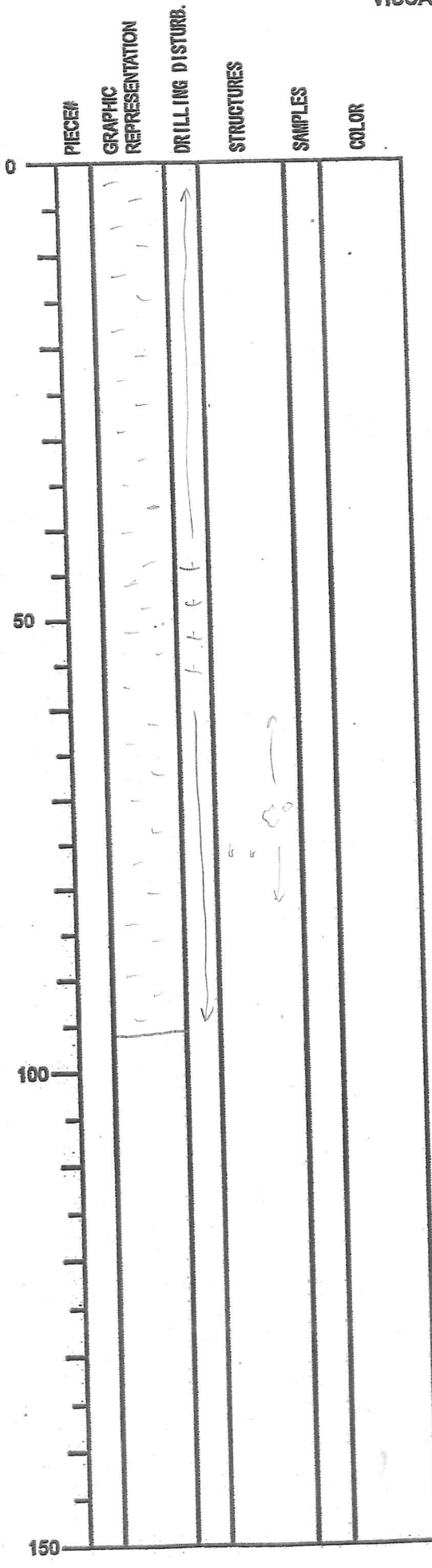
Grey silty(?) claystone, very little silt content, slickensides are common. Green colour bands/mottled patches are occasionally present.

Dolomite cemented ash layer. Bright white - very hard, unable to make smear slide (thin section).

- mottled.
- sponge spicule borrow.

INTEGRATED OCEAN DRILLING PROGRAM
VISUAL CORE DESCRIPTION

NO.
DATE: 13 101 / 20 08
EXP: 316
SITE/HOLE: C0006F
CORE: 20R
SECTION: 2
OBSERVER: JN



SECTION DESCRIPTION

nothing.
- unidentified burrows.

INTEGRATED OCEAN DRILLING PROGRAM
VISUAL CORE DESCRIPTION


NO.
DATE: 13 / 01 / 20 08
EXP: 316
SITE/HOLE: C0006F
CORE: 20R
SECTION: 3(cc)
OBSERVER: VN.

PIECE#	GRAPHIC REPRESENTATION	DRILLING DISTURB.	STRUCTURES	SAMPLES	COLOR
0	PAL	↑ ↓			
50					
100					
150					

SECTION DESCRIPTION

INTEGRATED OCEAN DRILLING PROGRAM
VISUAL CORE DESCRIPTION

NO.
DATE: 1310112008
EXP: 316
SITE/HOLE: C0006F
CORE: 21R
SECTION: CC
OBSERVER: CLF

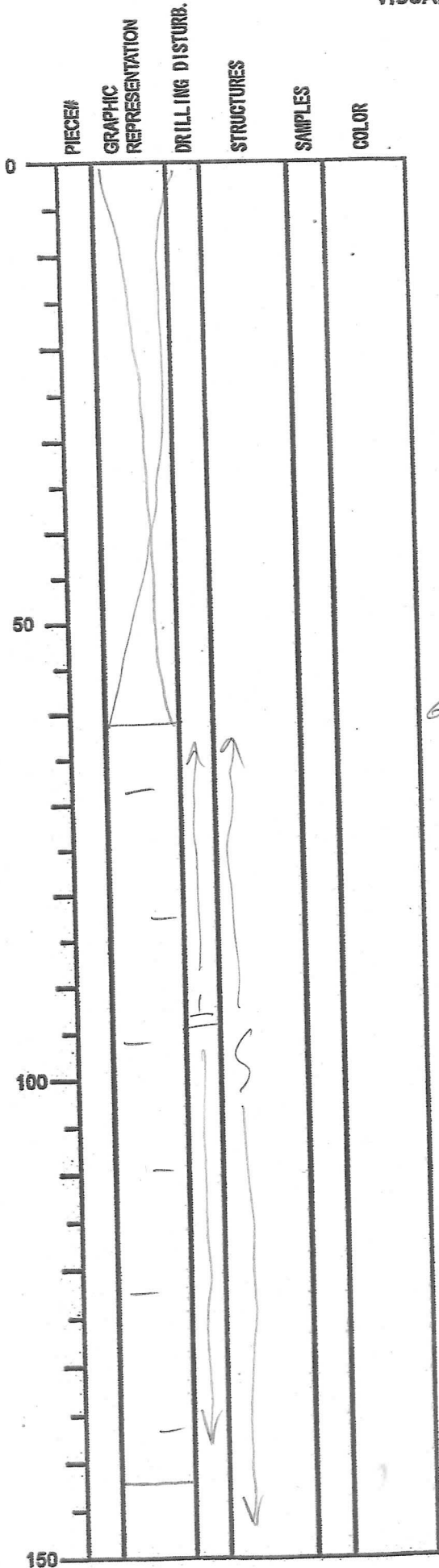
PIECE#	GRAPHIC REPRESENTATION	DRILLING DISTURB.	STRUCTURES	SAMPLES	COLOR
0					
50					
100					
150					

SECTION DESCRIPTION

Gray silty claystone

INTEGRATED OCEAN DRILLING PROGRAM
VISUAL CORE DESCRIPTION

NO.
DATE: 13/01/2008
EXP: 316
SITE/HOLE: C0006F
CORE: 22R
SECTION: 1
OBSERVER: CLF



SECTION DESCRIPTION

Greenish gray claystone
with sponge spicule lined
circular spots, bioturbated

IW

61.5 cm

Matural fractures
at high angle to
core axis,
early vein-type
features & offsets
(post-dated by
fractures)

INTEGRATED OCEAN DRILLING PROGRAM
VISUAL CORE DESCRIPTION

NO.
DATE: 13 10/12008
EXP: 316
SITE/HOLE: C0006F
CORE: 22R
SECTION: 2
OBSERVER: CLF

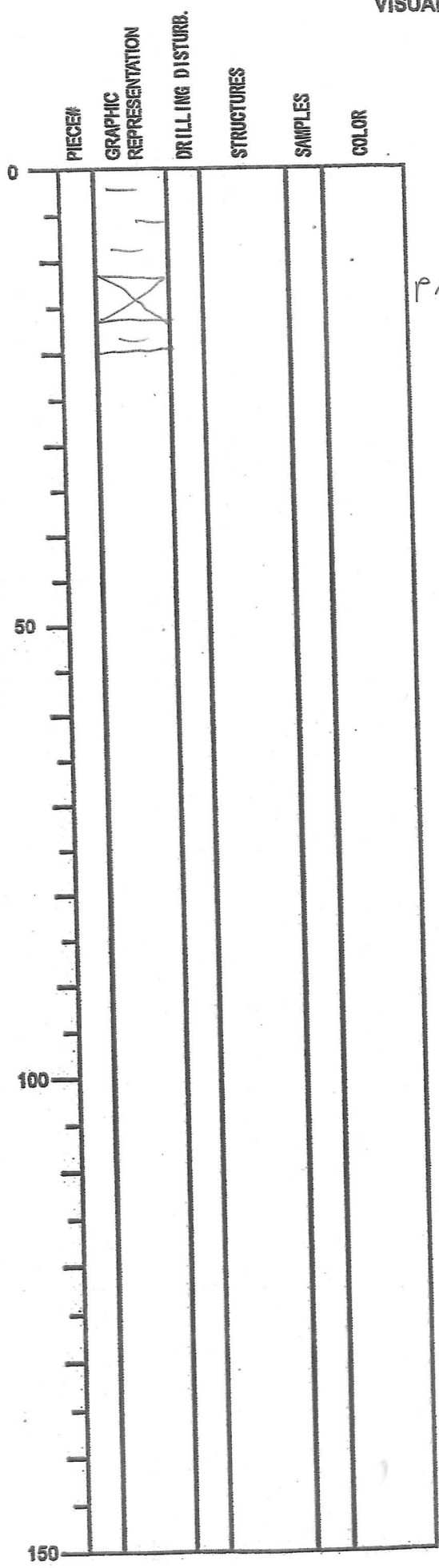
PIECE#	GRAPHIC REPRESENTATION	DRILLING DISTURB.	STRUCTURES	SAMPLES	COLOR

SECTION DESCRIPTION

claystone with
natural fractures.

INTEGRATED OCEAN DRILLING PROGRAM
VISUAL CORE DESCRIPTION

NO.
DATE: 13 101 12008
EXP: 316
SITE/HOLE: C0006F
CORE: 22 R
SECTION: CC
OBSERVER: CLF

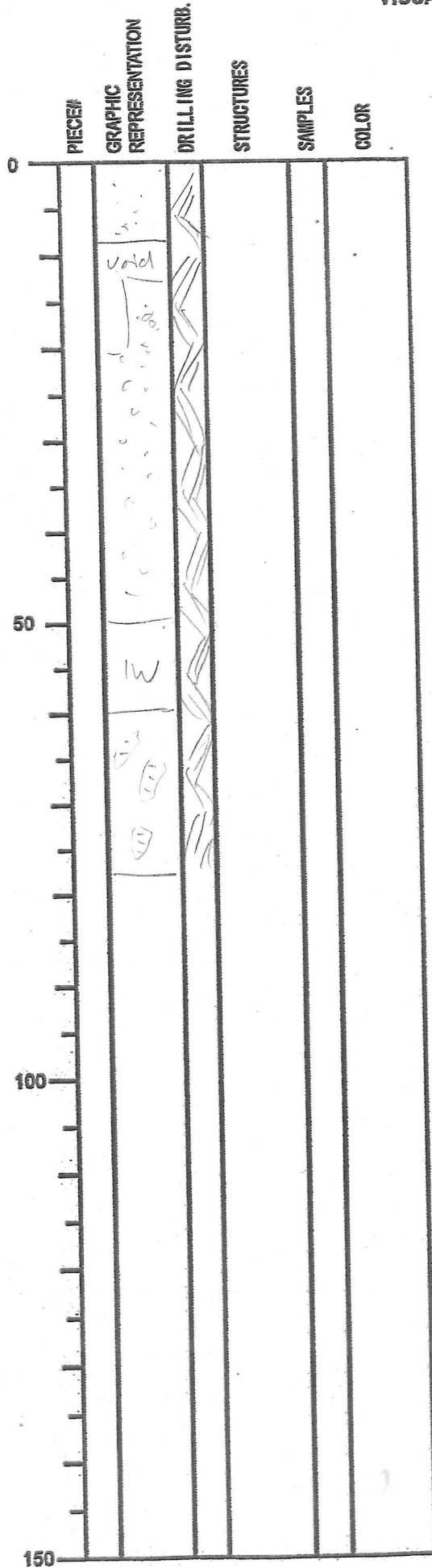


SECTION DESCRIPTION

claystone

INTEGRATED OCEAN DRILLING PROGRAM
VISUAL CORE DESCRIPTION

NO.
DATE: 13/11/2008
EXP: 316
SITE/HOLE: C0006F
CORE: 23R
SECTION: 1
OBSERVER: TJS/KLM



SECTION DESCRIPTION

heavily disturbed, ground to powder, sand and chips
chips are mainly ~~stone~~ chrystone
but also contain pieces of dolomite and even iron (→ from the drill bit?)
bigger pieces in the lower part show melting and moderate to heavy distortion

INTEGRATED OCEAN DRILLING PROGRAM
VISUAL CORE DESCRIPTION

NO.
DATE: 1 120
EXP: 316
SITE/HOLE: C0006A
CORE: 25 R
SECTION: CC
OBSERVER: Ms JKM

