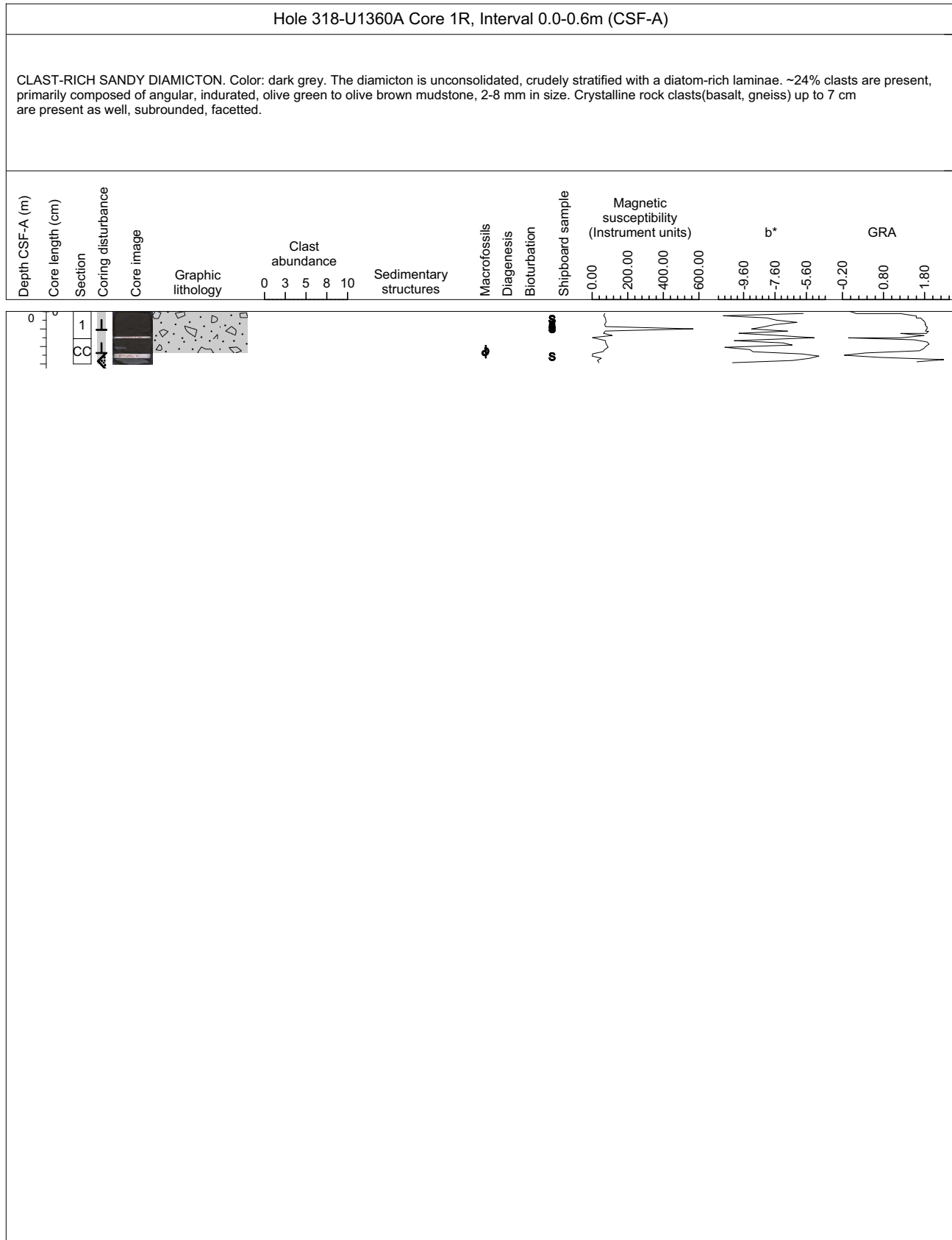
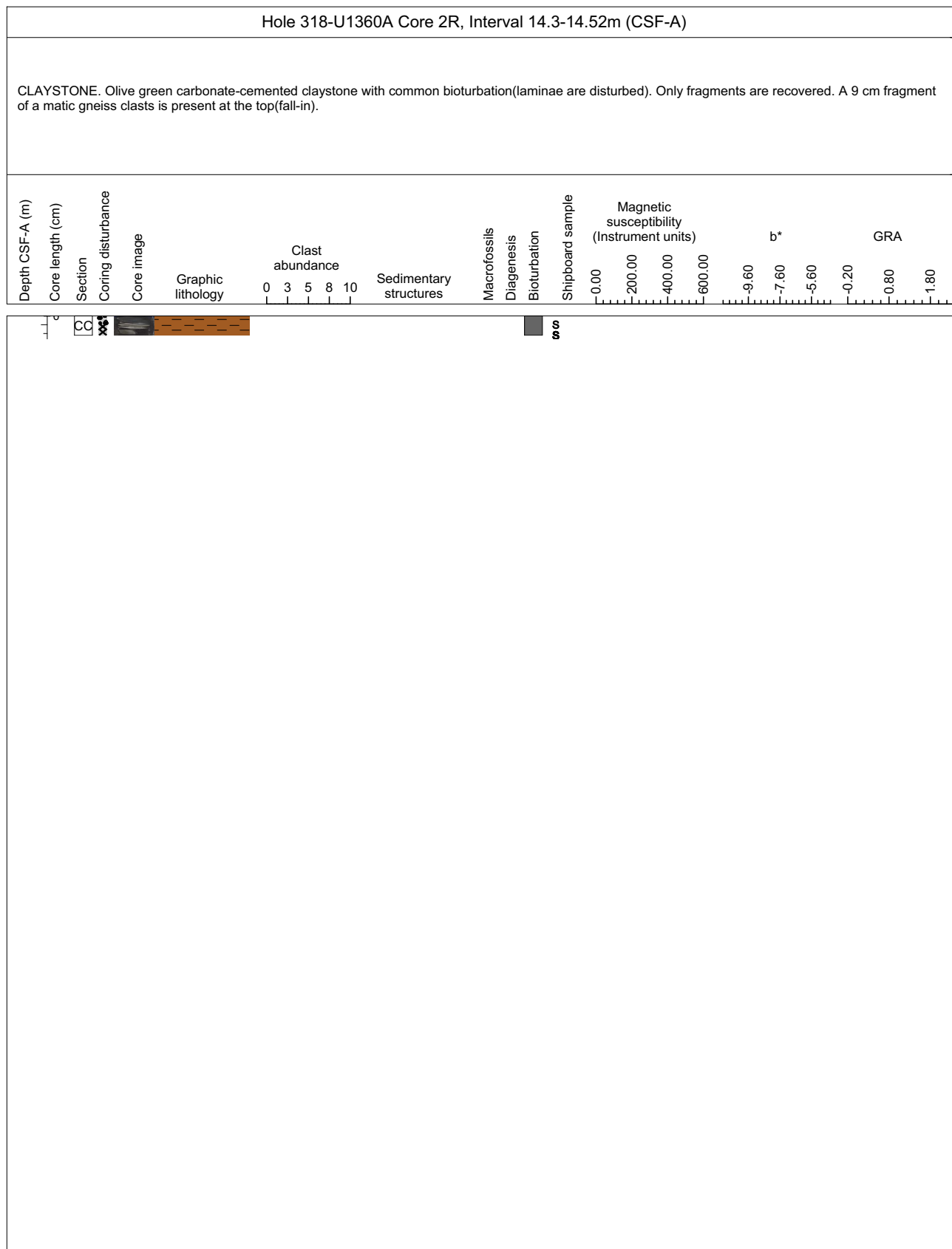


Core Photo



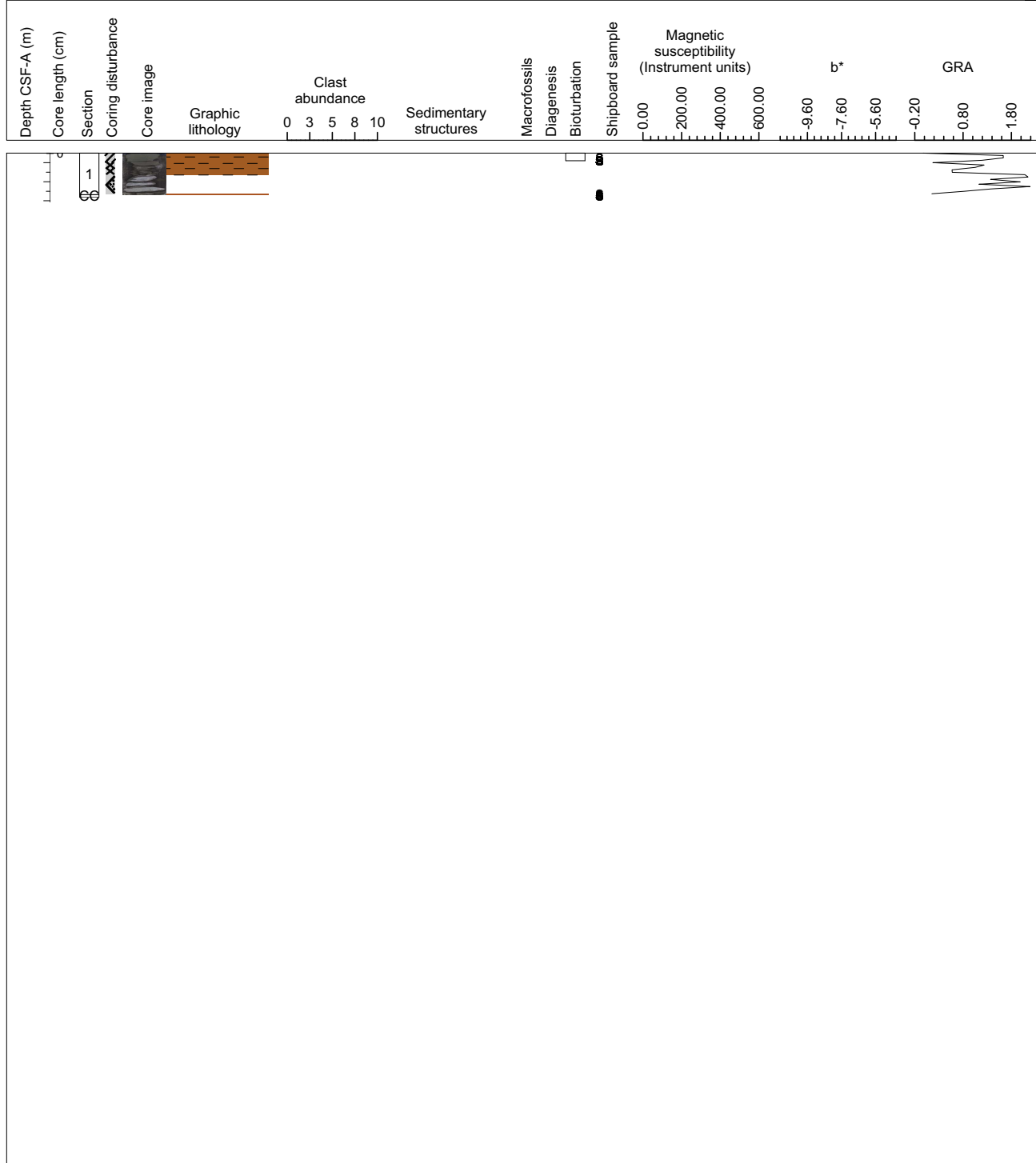
Core Photo



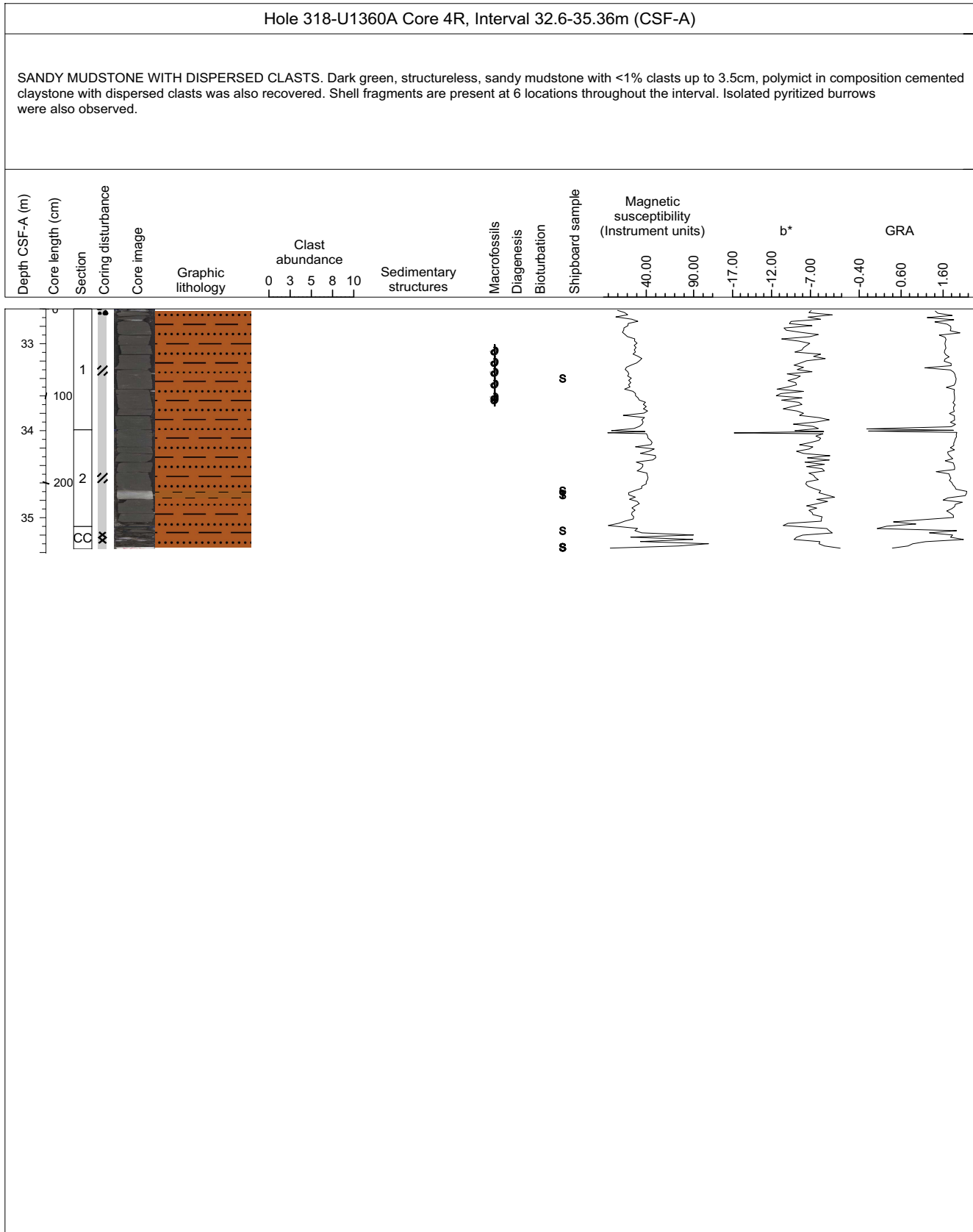
Core Photo

Hole 318-U1360A Core 3R, Interval 23.3-23.765m (CSF-A)

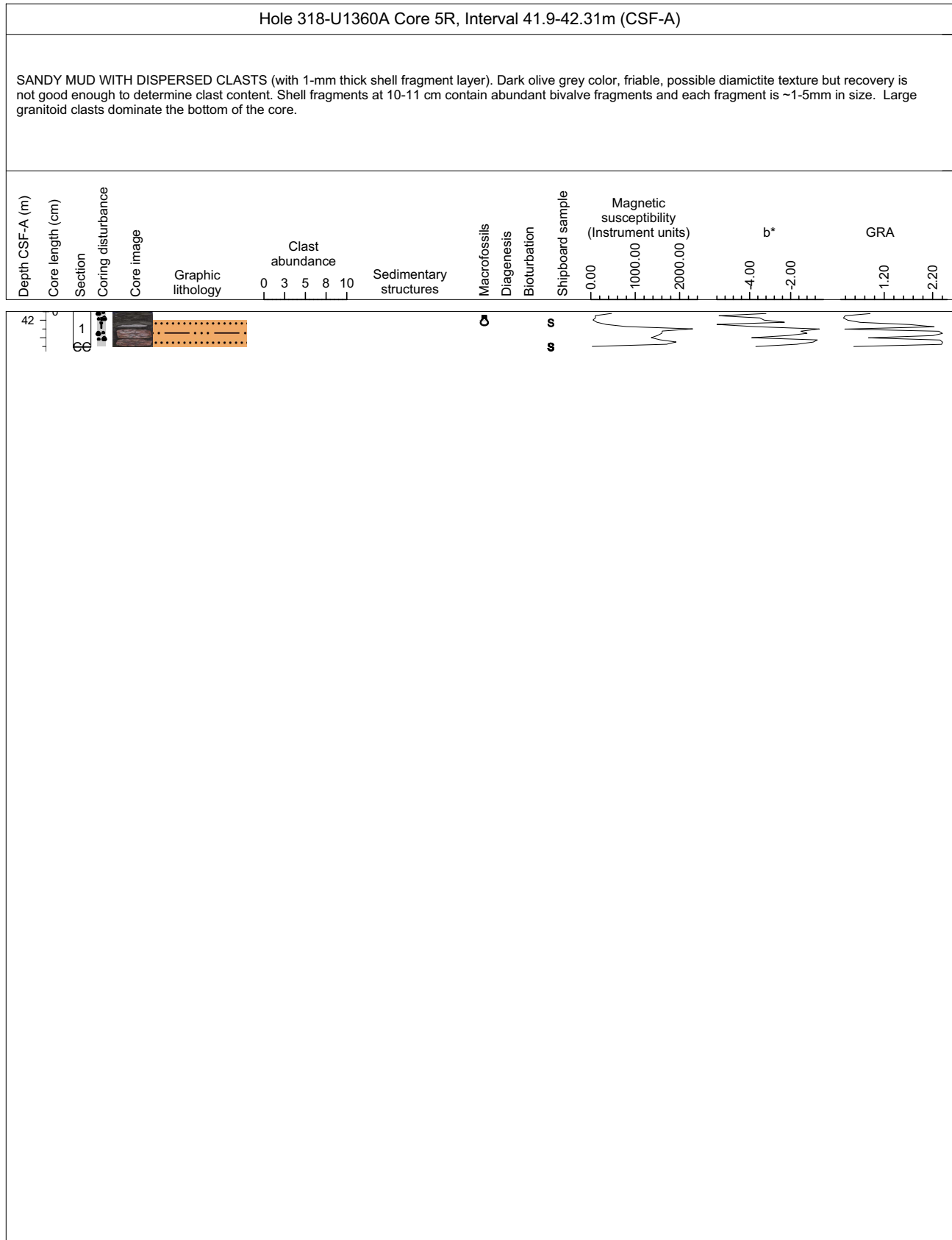
CLAYSTONE WITH DISPERSED CLASTS. Dark green in color with dispersed sand grains and granule-sized clasts. Bioturbation is moderate with pyritized burrows. One fragment of a carbonate-cemented SANDY MUDSTONE is also present below 3 washed pebbles, up to 7 cm, of matic composition.



Core Photo



Core Photo



Core Photo





Site	Samples			Texture			Mineral										Biogenic								Rock		Lithology						
	Core	Section	Depth in section (cm)	Depth (m)	% Volcanic sediments	% Terrigenous sediments	% Biogenic sediments	Quartz	Feldspar	Micas	Clay	Glauconite	Ferromagnesian minerals	Dense minerals	Pyrite	Opaque minerals	Carbonate	Micrite	Foraminifers	Nannofossils	Calcareous sponge spicules	Radiolarians	Diatoms	Silicoflagellates	Spicules	Siliceous debris	Dinoflagellates	Fish remains	Rock fragments	Volcanic glass	Lithology abundance	Lithology name	
U1360A	1	1	15	0.2	0	89	11	12	3	1	65				8																	Ma	diatom-bearing silty clay
U1360A	1	1	20	0.2	0	47	53	8	10		30		1	3									10	1	2							Mi	clay-rich diatom ooze
U1360A	2	CC	10	14	0	100	0	2	1		30					67																D	clay-rich limestone
U1360A	3	1	5	23	0	100	0	5			89			6																		Ma	claystone
U1360A	3	1	43	24	0	90	10	51			30	1		8									10									Mi	sandy mudstone
U1360A	4	1	80	33	0	100	0	22	5	1	64		1	7																		D	sandy mud diamictite
U1360A	4	2	75	35	0	100	0	8			50					42																Mi	carbonate cemented claystone
U1360A	5	1	13	42	0	100	0	15		1	59	5		5														15			Ma	sandy mud with dispersed clasts	
U1360A	6	1	30	52	0	100	0	70	3		15	5		5														2			Ma	sandy silt with dispersed clasts	
U1360A	6	2	75	53	0	100	0	10			5	7		8		70																Ma	carbonate-cement diamictite