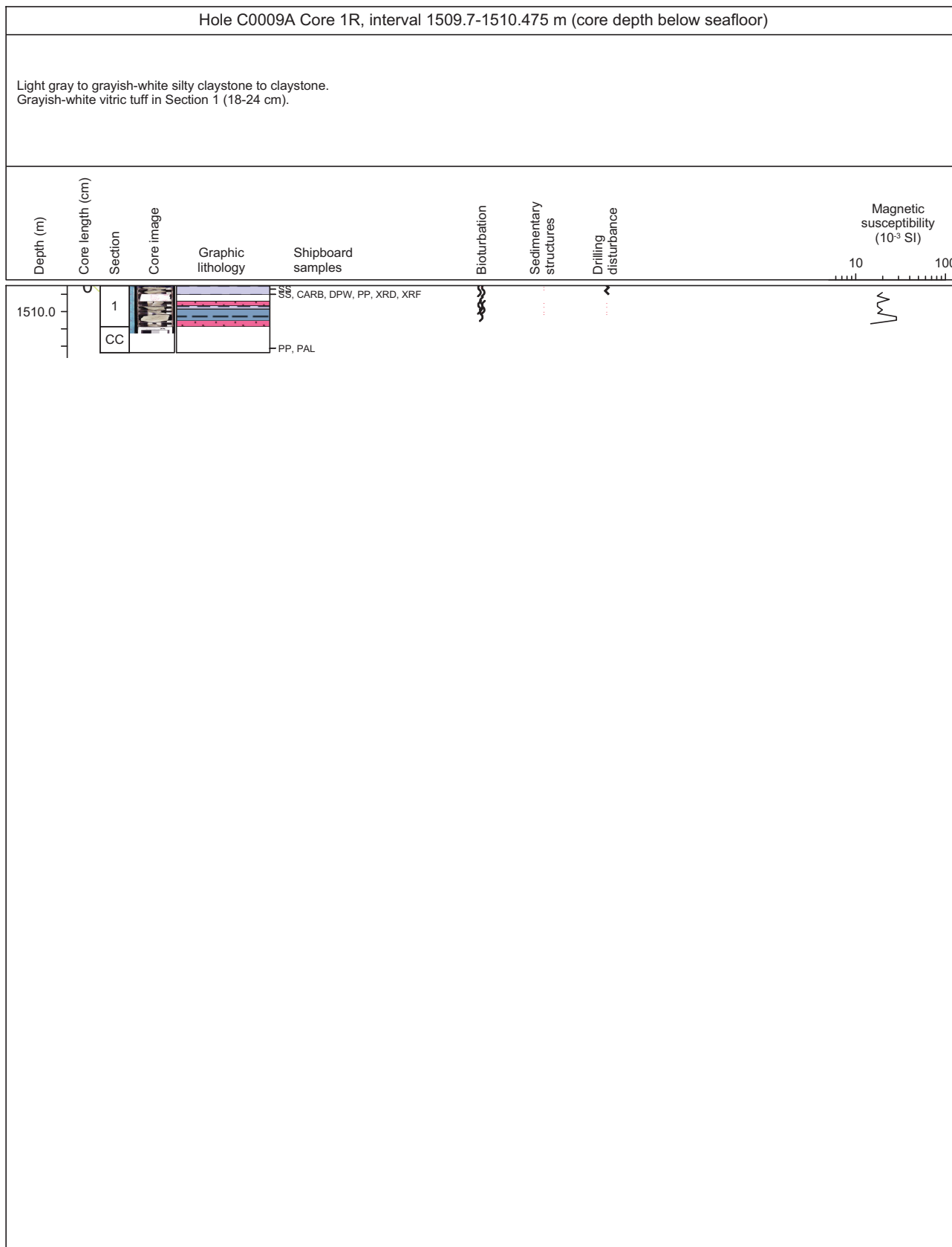
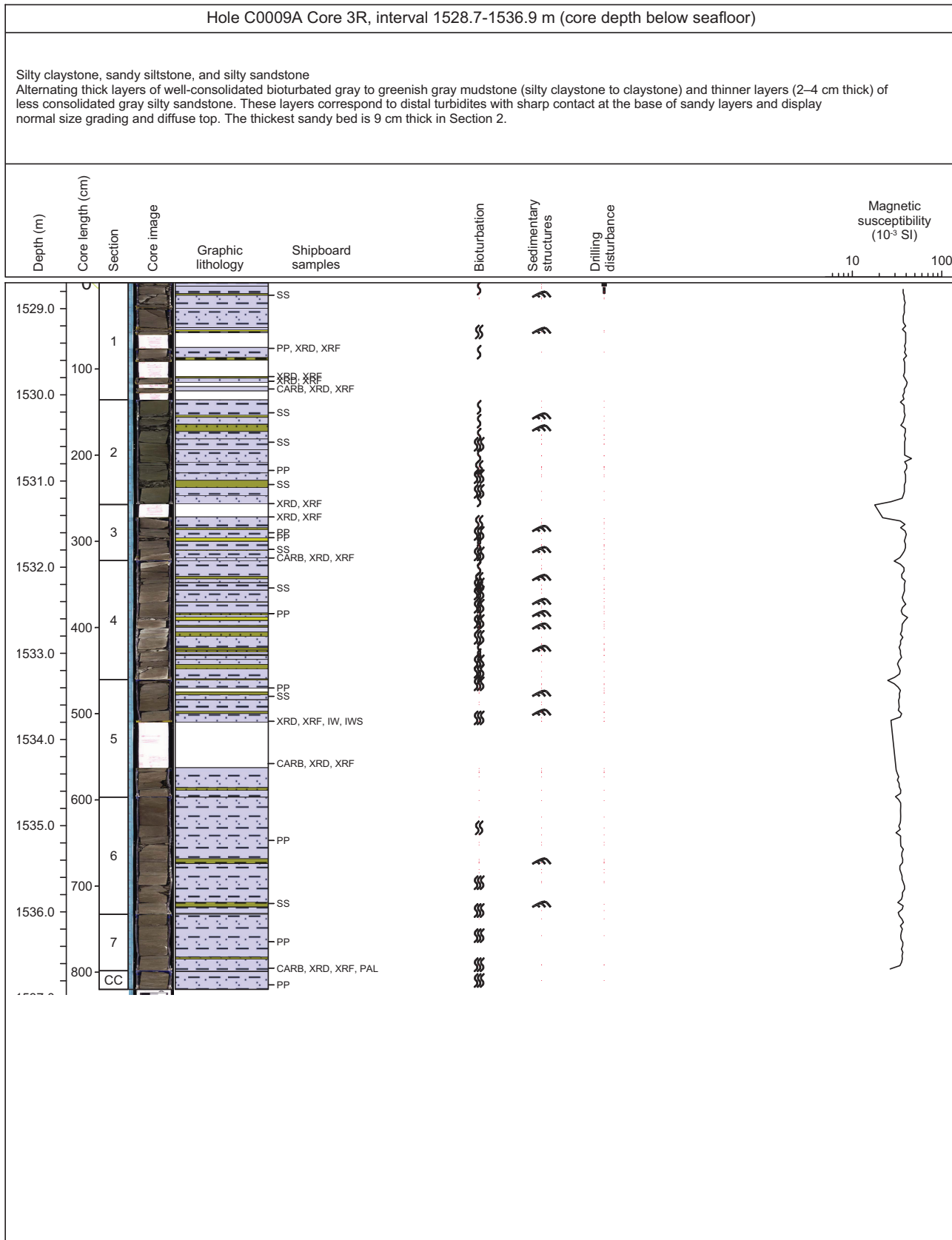


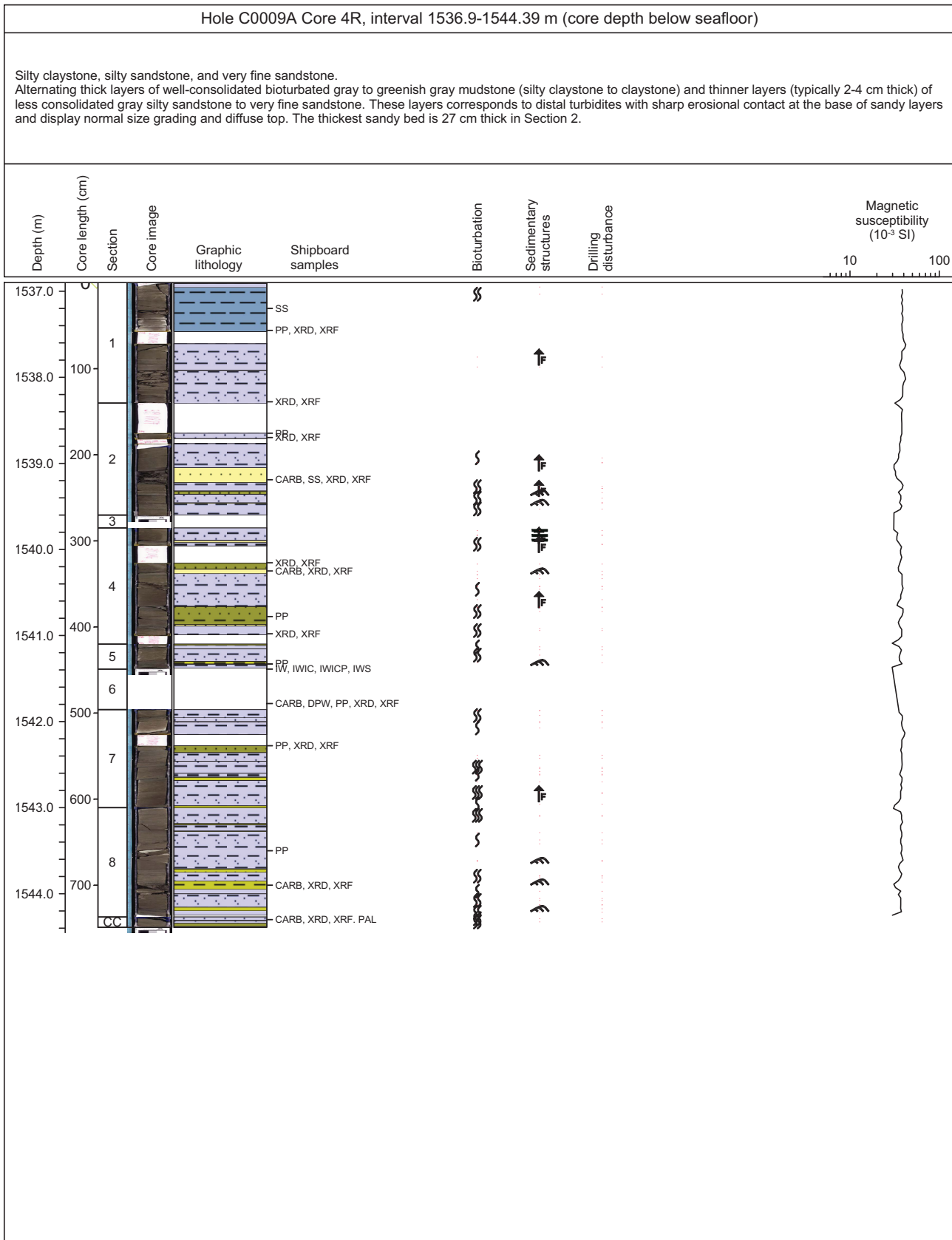
Core Photo



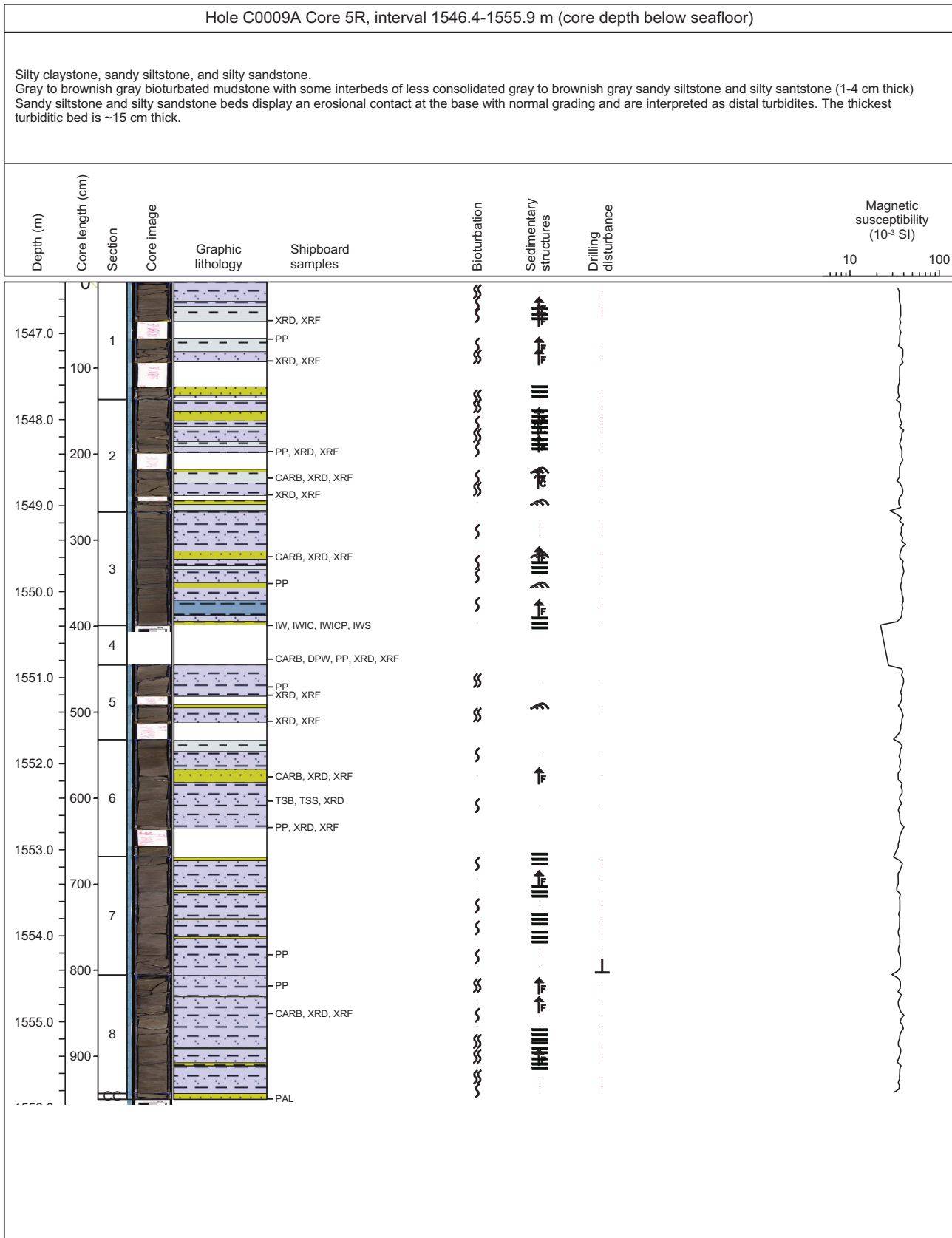
Core Photo



Core Photo



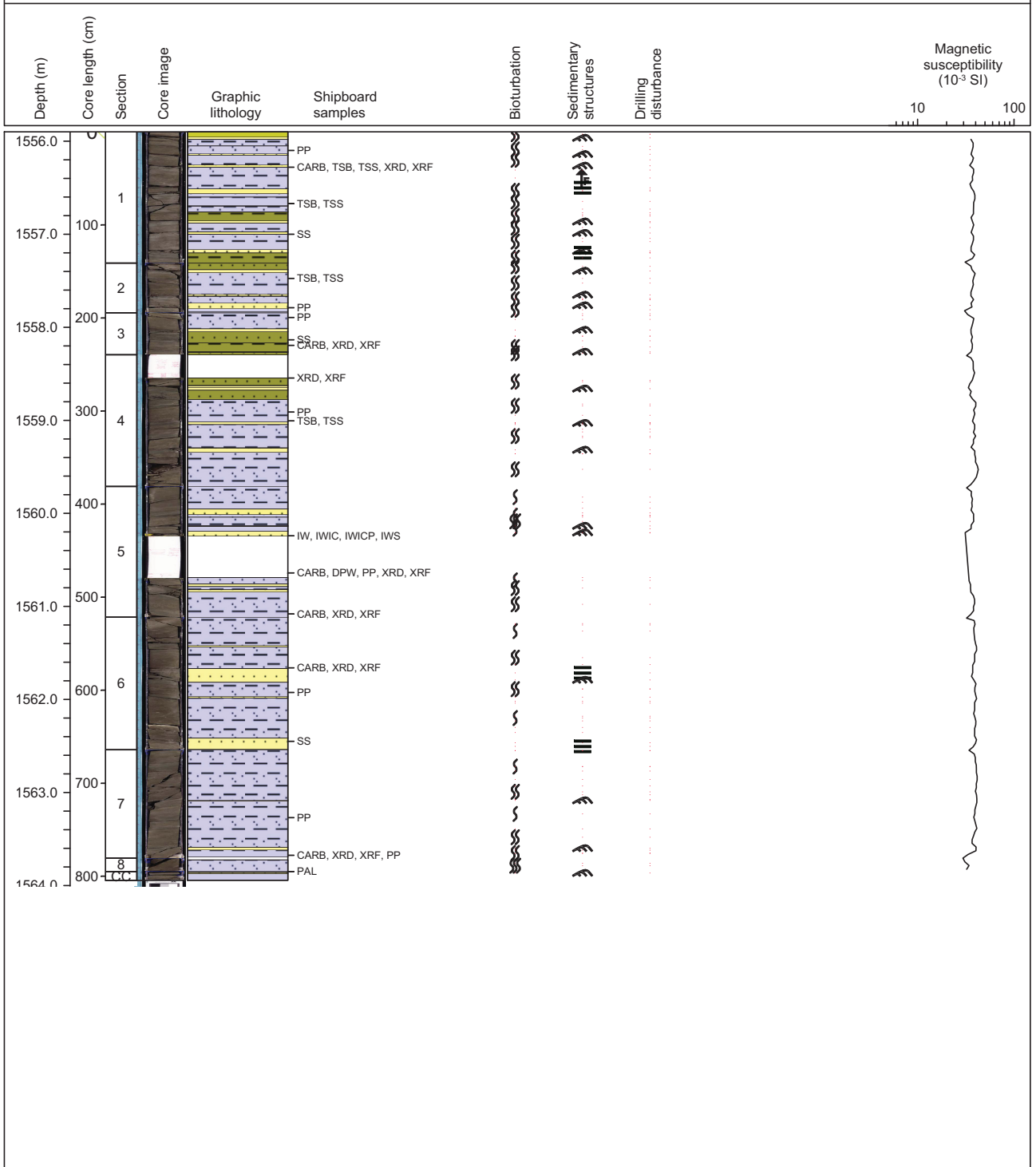
Core Photo



Core Photo

Hole C0009A Core 6R, interval 1555.9-1563.945 m (core depth below seafloor)

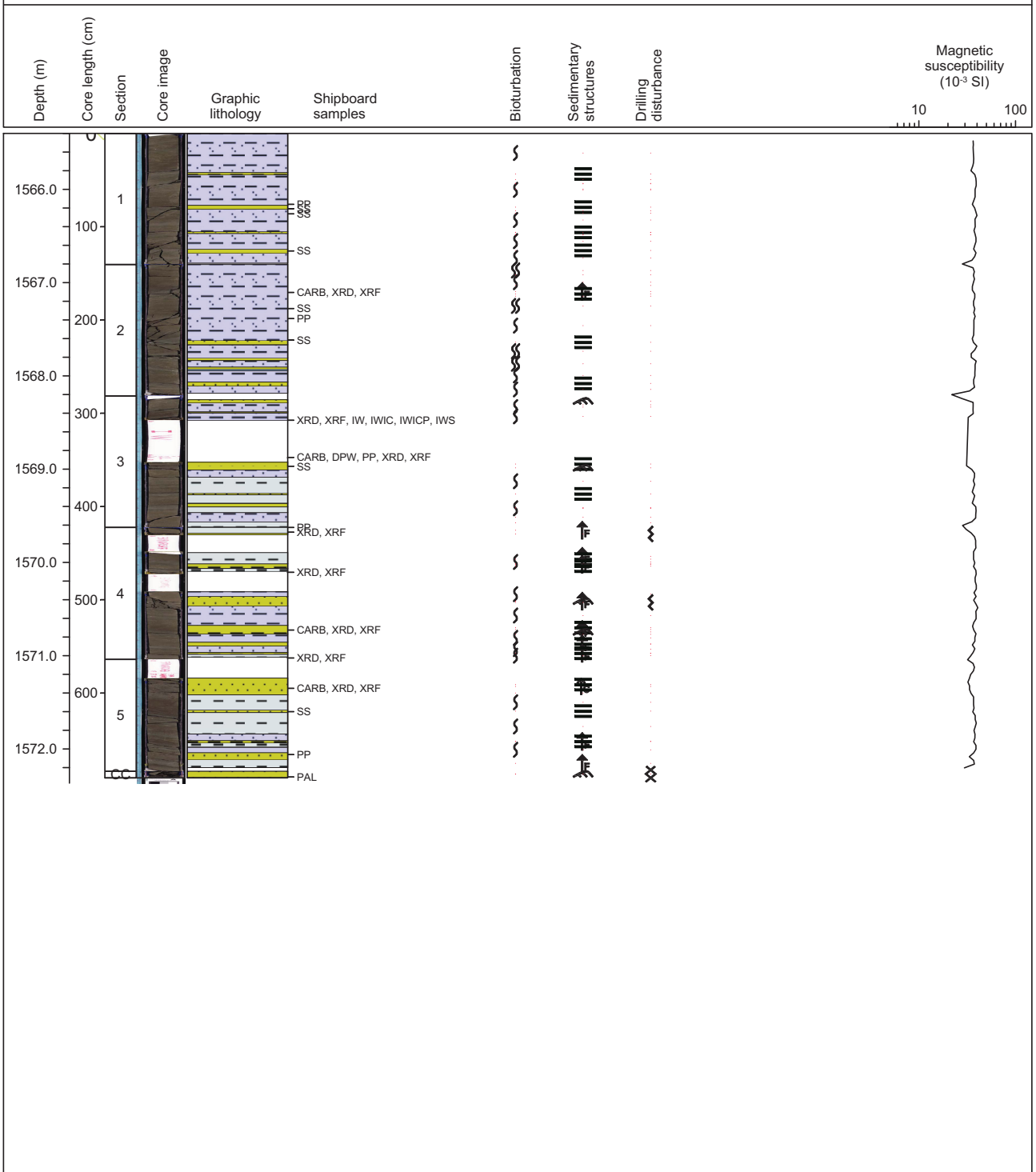
Silty claystone, silty sandstone, sandy siltstone, and very fine sandstone. Alternating thick layers of well-consolidated bioturbated gray to greenish gray silty claystone to silty sandstone and thinner layers (typically 2-4 cm thick) of less consolidated gray silty sandstone to fine sandstone. These layers correspond to distal turbidites with sharp erosional contact at the base of sandy layers and display normal size grading and diffuse top. The thickest sandy bed is ~15 cm thick in Section 6.



Core Photo

Hole C0009A Core 7R, interval 1565.4-1572.31 m (core depth below seafloor)

Silty claystone, sandy siltstone, and silty sandstone.
 Gray to brownish gray bioturbated mudstone with some interbeds of less-consolidated gray to brownish gray sandy siltstone and silty sandstone (2-4 cm thick).
 Sandy siltstone and silty sandstone beds display an erosional contact at the base with normal grading and are interpreted as distal turbidites. The thickest turbiditic bed is ~18 cm thick.



Core Photo

