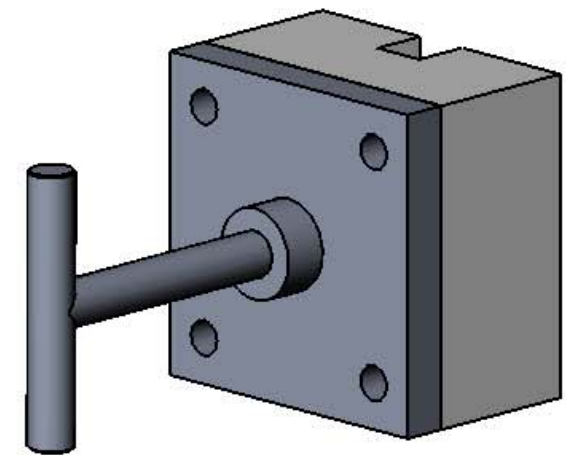
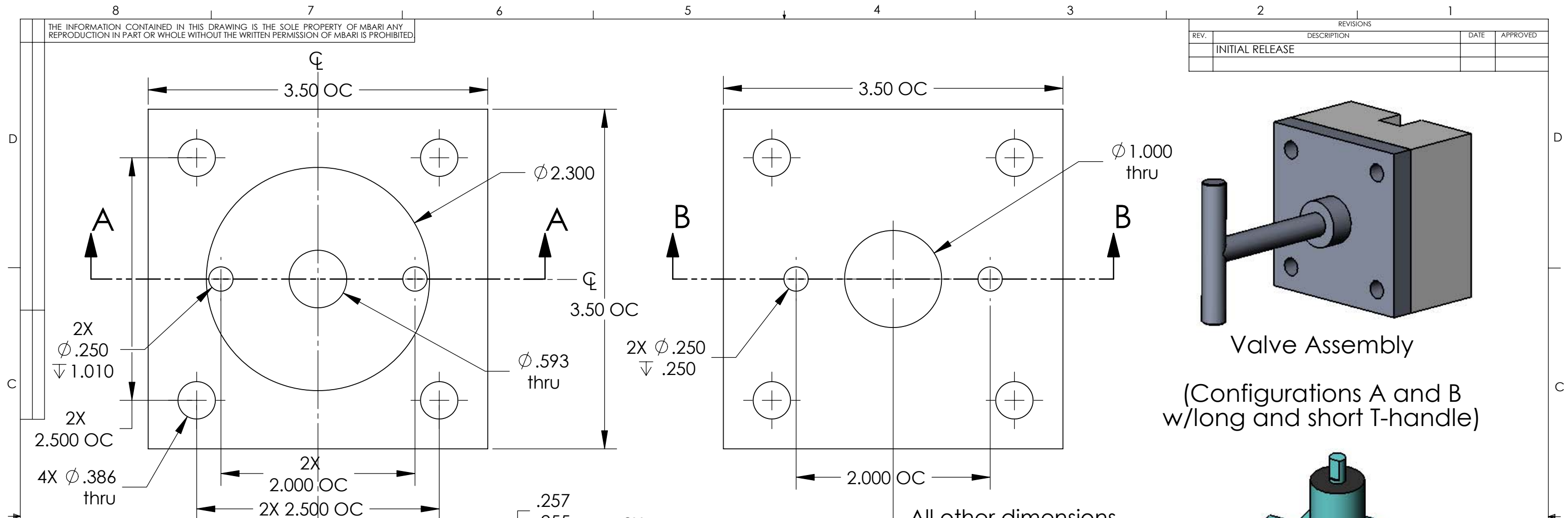


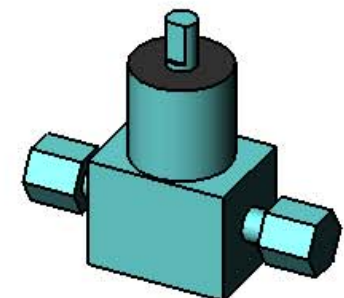
THE INFORMATION CONTAINED IN THIS DRAWING IS THE SOLE PROPERTY OF MBARI ANY REPRODUCTION IN PART OR WHOLE WITHOUT THE WRITTEN PERMISSION OF MBARI IS PROHIBITED

REVISIONS			
REV.	DESCRIPTION	DATE	APPROVED
	INITIAL RELEASE		

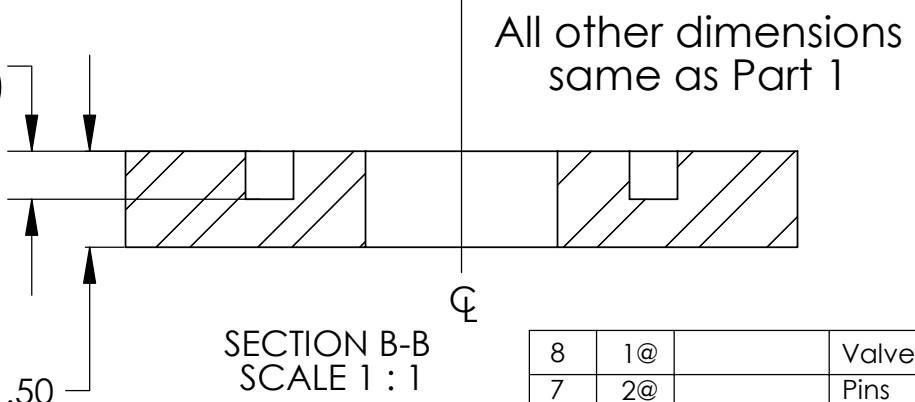


Valve Assembly

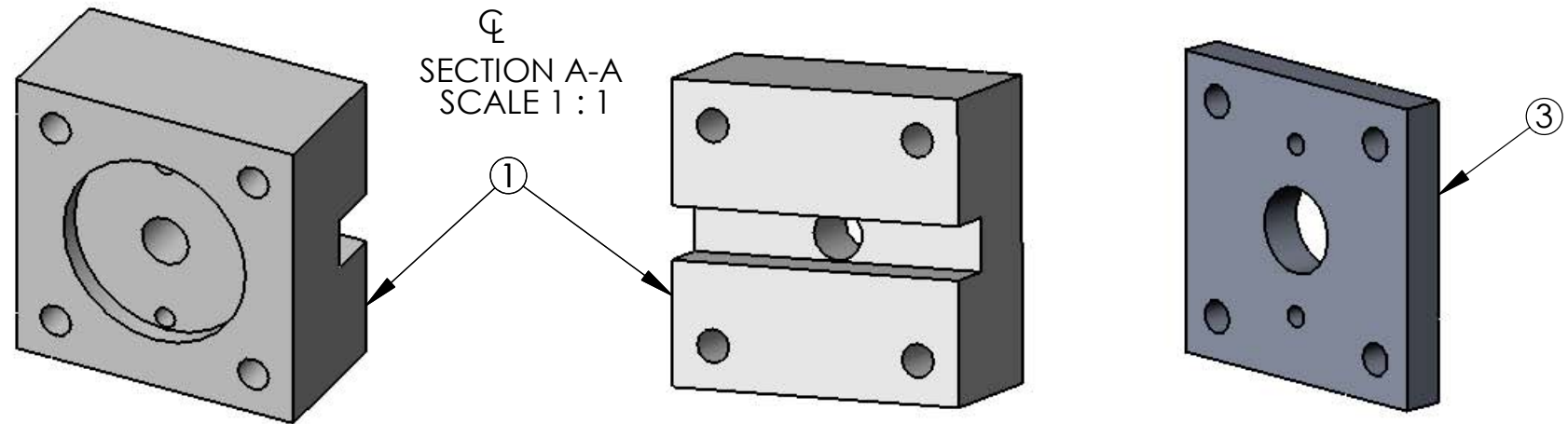
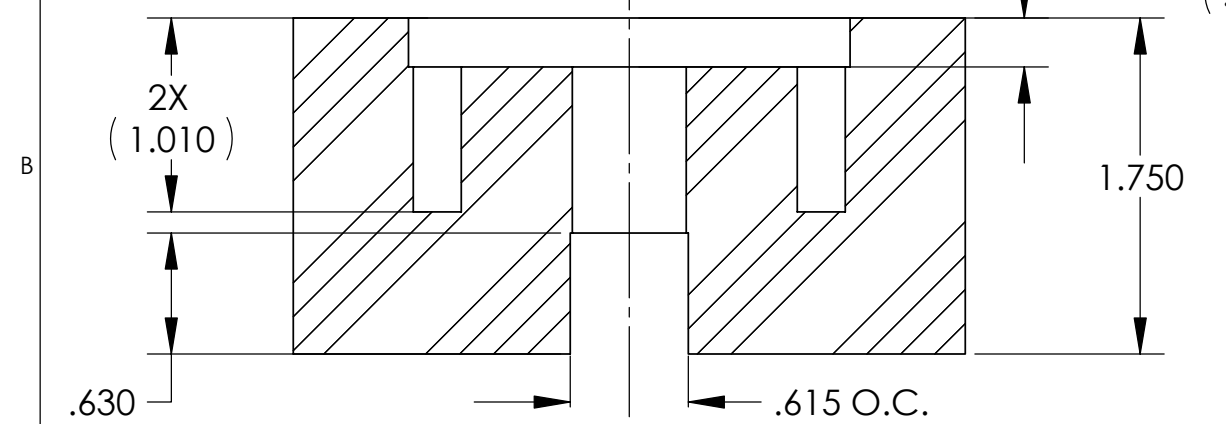
(Configurations A and B w/long and short T-handle)



Swagelok SS-41S1 Valve for 1/16" tubing with .053 bore



All other dimensions same as Part 1

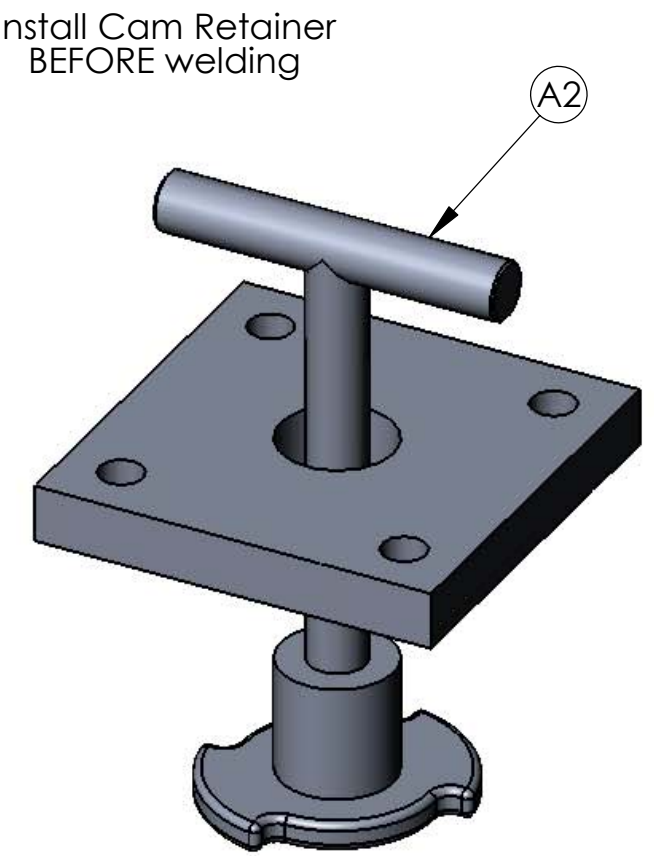
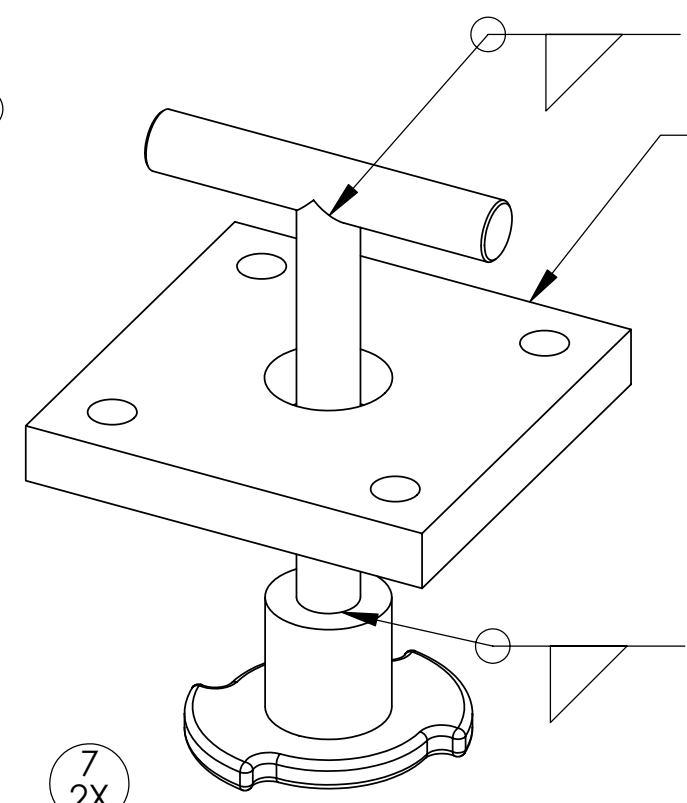
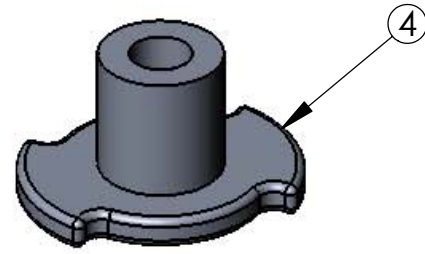
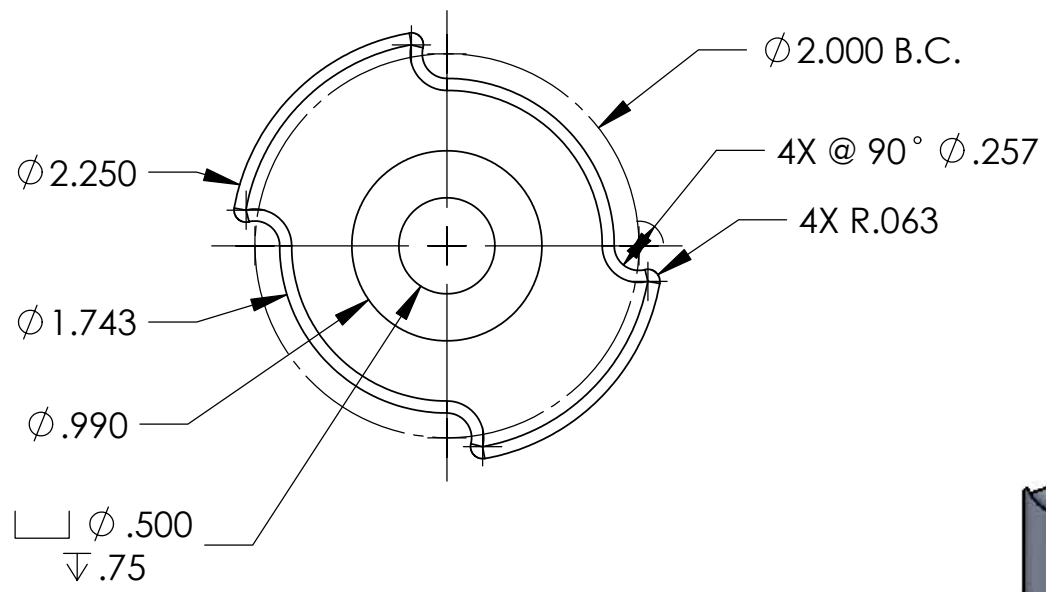


Item No.	Qty.	Part No.	Description	Material Specification
8	1@		Valve	Type 316 Stainless steel
7	2@		Pins	Type 316 Stainless steel
6	1@		T-handle end	Type 316 Stainless steel
5	1@		T-handle shaft (Config A and B)	Type 316 Stainless steel
4	1@		Cam	Type 316 Stainless steel
3	1@		Cam retainer	Type 316 Stainless steel
A2	P3-6		T-handle/Cam Assembly (Config A/B)	Welded Assy
1	1@		Valve Body (Config A and B)	UHMW Polyethylene

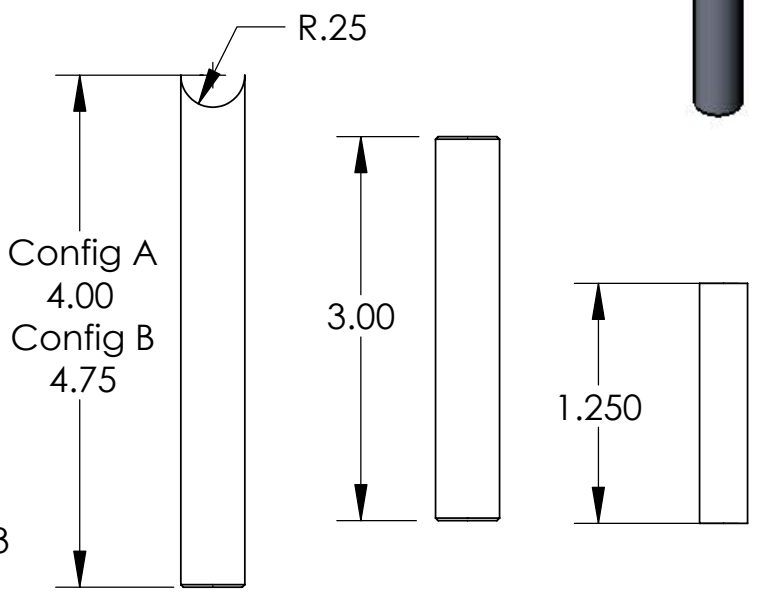
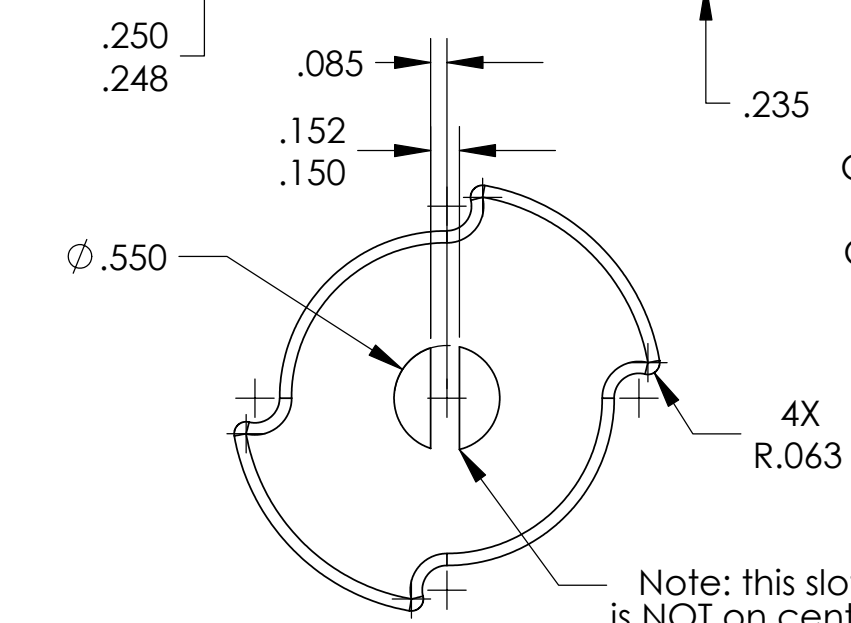
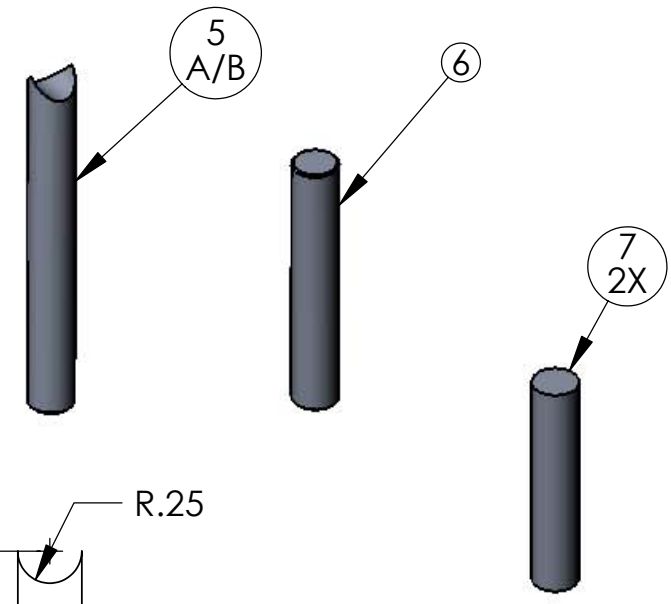
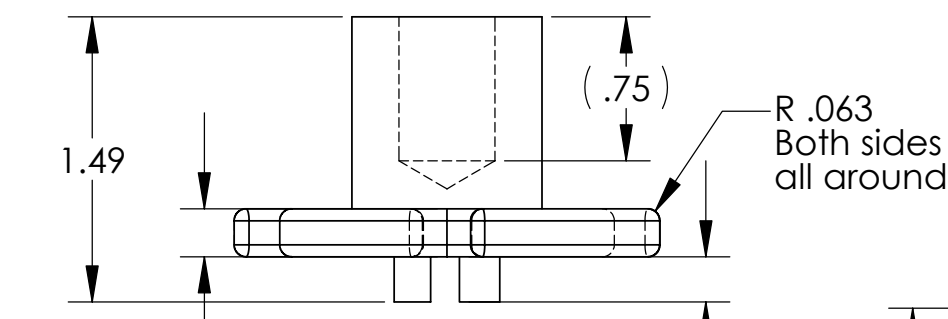
Shop / Q.C.		UNLESS OTHERWISE SPECIFIED TOLERANCES ARE:				APPROVALS	DATE	Monterey Bay Aquarium Research Institute	
Inspector		1 PLACE DIM ±1/16	2 PLACE DIM ±.02	3 PLACE DIM ±.005	ANGLES ±1°	DRAWN	5/10/04	MBARI	
Shop Foreman		1. DIMENSIONS ARE IN INCHES				Hans Jannasch		7700 Sandholdt RD.	
Engineer		2. DIMENSION LIMITS HELD AFTER PLATING.				ENGINEER		Moss Landing, CA 95039	
		3. REMOVE BURRS AND SHARP EDGES .015 MAX.				CHECKED		PH: (831) 775-1700	
		4. MACHINED FILLET RADII .0150-.030.				PROJECT NO.	701145	150jahaSeafloorValve	
NEXT ASSY Description	NEXT ASSY Number	5. MACHINED DIAMETERS ON A COMMON CENTERLINE CONCENTRIC WITHIN .005				PROJECT	Juan de Fuca NSF Grant	MiniValve T-handle	
		6. PERPENDICULARITY & PARALLELISM OF MACHINED SURFACES .002 PER INCH. MAX .012 INCHES FOR SINGLE SURFACE.				SIZE	B	DWG. NO.	150jaha.DWG
Application		DO NOT SCALE DRAWING				WEIGHT		SCALE	1:2
								CAD FILE:	tornado/chem/SWfiles
								SHEET	1 OF 2

THE INFORMATION CONTAINED IN THIS DRAWING IS THE SOLE PROPERTY OF MBARI. ANY REPRODUCTION IN PART OR WHOLE WITHOUT THE WRITTEN PERMISSION OF MBARI IS PROHIBITED.

REVISIONS			
REV.	DESCRIPTION	DATE	APPROVED
INITIAL RELEASE			



T-handle/Cam Assembly
(Configurations A and B w/long and short T-handle)



Item No.	Qty.	Part No.	Description	Material Specification
8	1@		Valve	Type 316 Stainless steel
7	2@		Pins	Type 316 Stainless steel
6	1@		T-handle end	Type 316 Stainless steel
5	1@		T-handle shaft (Config A and B)	Type 316 Stainless steel
4	1@		Cam	Type 316 Stainless steel
3	1@		Cam retainer	Type 316 Stainless steel
A2	P3-6		T-handle/Cam Assembly (Config A/B)	Welded Assy
1	1@		Valve Body (Config A and B)	UHMW Polyethylene

BILL OF MATERIALS

Shop / Q.C.		UNLESS OTHERWISE SPECIFIED TOLERANCES ARE:				APPROVALS	DATE	Monterey Bay Aquarium Research Institute			
Inspector		1 PLACE DIM ±1/16	2 PLACE DIM ±.02	3 PLACE DIM ±.005	ANGLES ±1°	DRAWN	5/10/04	Hans Jannasch			
Shop Foreman		1. DIMENSIONS ARE IN INCHES 2. DIMENSION LIMITS HELD AFTER PLATING. 3. REMOVE BURRS AND SHARP EDGES .015 MAX. 4. MACHINED FILLET RADII .0150-.030. 5. MACHINED DIAMETERS ON A COMMON CENTERLINE CONCENTRIC WITHIN .005 6. PERPENDICULARITY & PARALLELISM OF MACHINED SURFACES .002 PER INCH, MAX .012 INCHES FOR SINGLE SURFACE.				ENGINEER		MBARI 7700 Sandholdt RD. Moss Landing, CA 95039 PH: (831) 775-1700			
Engineer						CHECKED		PROJECT NO. 701145		150jahaSeafloorValve	
NEXT ASSY Description	NEXT ASSY Number							PROJECT	Juan de Fuca NSF Grant	MiniValve T-handle	
Application		DO NOT SCALE DRAWING				WEIGHT		SIZE B	DWG. NO. 150jaha.DWG		
							SCALE 1:2	CAD FILE: tornado/chem/SWfiles	SHEET 2 OF 2		

