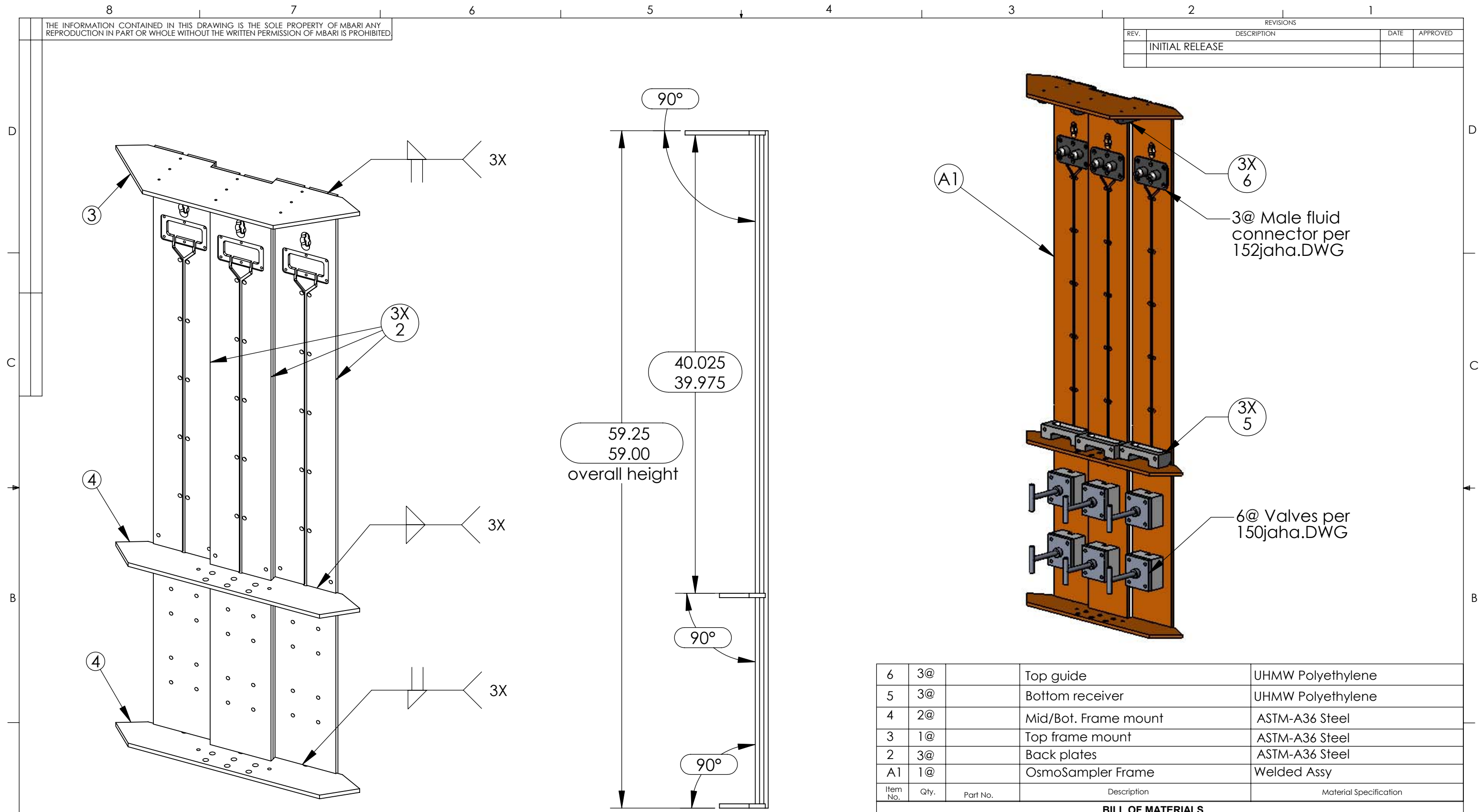


THE INFORMATION CONTAINED IN THIS DRAWING IS THE SOLE PROPERTY OF MBARI ANY REPRODUCTION IN PART OR WHOLE WITHOUT THE WRITTEN PERMISSION OF MBARI IS PROHIBITED

REVISIONS			
REV.	DESCRIPTION	DATE	APPROVED
	INITIAL RELEASE		



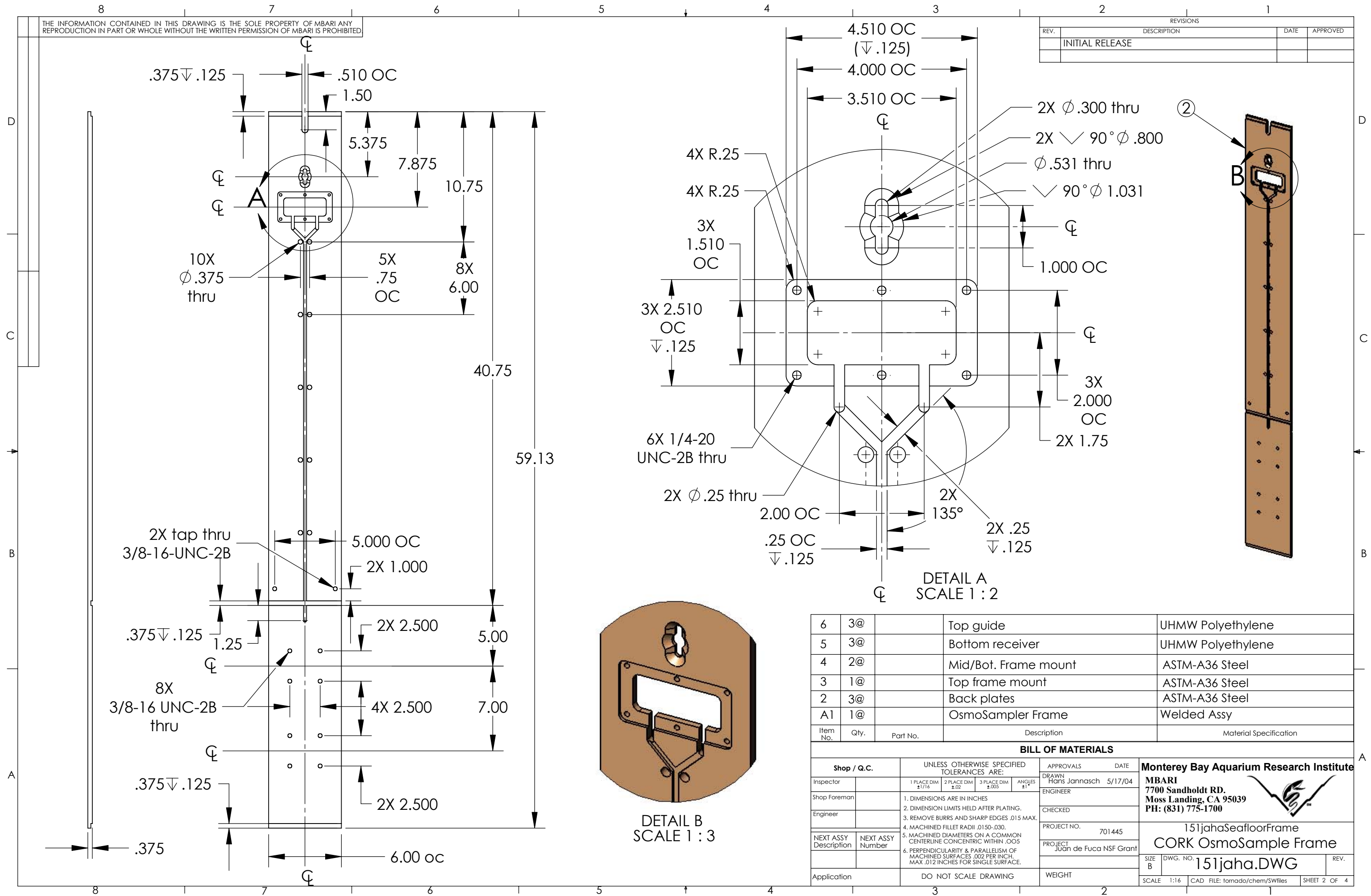
Welding notes:
 7: Keep guide slots at top frame mount clear
 8: Keep grooves at middle frame mounts clear
 9: Clamp frame mounts to keep parallel and perpendicular to back plates.

Item No.	Qty.	Part No.	Description	Material Specification
6	3@		Top guide	UHMW Polyethylene
5	3@		Bottom receiver	UHMW Polyethylene
4	2@		Mid/Bot. Frame mount	ASTM-A36 Steel
3	1@		Top frame mount	ASTM-A36 Steel
2	3@		Back plates	ASTM-A36 Steel
A1	1@		OsmoSampler Frame	Welded Assy

Shop / Q.C.		UNLESS OTHERWISE SPECIFIED TOLERANCES ARE:				APPROVALS	DATE	Monterey Bay Aquarium Research Institute			
Inspector		1 PLACE DIM ±1/16	2 PLACE DIM ±.02	3 PLACE DIM ±.005	ANGLES ±1°	DRAWN	5/17/04	Hans Jannasch			
Shop Foreman		1. DIMENSIONS ARE IN INCHES 2. DIMENSION LIMITS HELD AFTER PLATING. 3. REMOVE BURRS AND SHARP EDGES .015 MAX. 4. MACHINED FILLET RADII .0150-.030. 5. MACHINED DIAMETERS ON A COMMON CENTERLINE CONCENTRIC WITHIN .005 6. PERPENDICULARITY & PARALLELISM OF MACHINED SURFACES .002 PER INCH, MAX .012 INCHES FOR SINGLE SURFACE.				ENGINEER		MBARI 7700 Sandholdt RD. Moss Landing, CA 95039 PH: (831) 775-1700			
Engineer						CHECKED		PROJECT NO. 701445		151jahaSeafloorFrame	
NEXT ASSY Description	NEXT ASSY Number							PROJECT	Juan de Fuca NSF Grant	CORK OsmoSample Frame	
Application		DO NOT SCALE DRAWING		WEIGHT		SIZE B	DWG. NO. 151jaha.DWG	REV.			
		SCALE 1:16		CAD FILE: tornado/chem/SWfiles		SHEET 1 OF 4					

THE INFORMATION CONTAINED IN THIS DRAWING IS THE SOLE PROPERTY OF MBARI ANY REPRODUCTION IN PART OR WHOLE WITHOUT THE WRITTEN PERMISSION OF MBARI IS PROHIBITED

REVISIONS			
REV.	DESCRIPTION	DATE	APPROVED
INITIAL RELEASE			



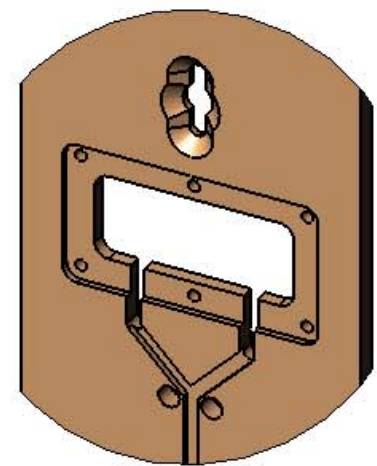
Item No.	Qty.	Part No.	Description	Material Specification
6	3@		Top guide	UHMW Polyethylene
5	3@		Bottom receiver	UHMW Polyethylene
4	2@		Mid/Bot. Frame mount	ASTM-A36 Steel
3	1@		Top frame mount	ASTM-A36 Steel
2	3@		Back plates	ASTM-A36 Steel
A1	1@		OsmoSampler Frame	Welded Assy

BILL OF MATERIALS

Shop / Q.C.		UNLESS OTHERWISE SPECIFIED TOLERANCES ARE:				APPROVALS		DATE
Inspector		1 PLACE DIM ±1/16	2 PLACE DIM ±.02	3 PLACE DIM ±.005	ANGLES ±1°	DRAWN		
Shop Foreman		1. DIMENSIONS ARE IN INCHES				Hans Jannasch	5/17/04	
Engineer		2. DIMENSION LIMITS HELD AFTER PLATING.				ENGINEER		
		3. REMOVE BURRS AND SHARP EDGES .015 MAX.				CHECKED		
		4. MACHINED FILLET RADII .0150-.030.				PROJECT NO.	701445	
NEXT ASSY Description	NEXT ASSY Number	5. MACHINED DIAMETERS ON A COMMON CENTERLINE CONCENTRIC WITHIN .005				PROJECT	Juan de Fuca NSF Grant	
		6. PERPENDICULARITY & PARALLELISM OF MACHINED SURFACES .002 PER INCH. MAX .012 INCHES FOR SINGLE SURFACE.				SIZE	B	
Application		DO NOT SCALE DRAWING				WEIGHT		

Monterey Bay Aquarium Research Institute
MBARI
 7700 Sandholdt RD.
 Moss Landing, CA 95039
 PH: (831) 775-1700

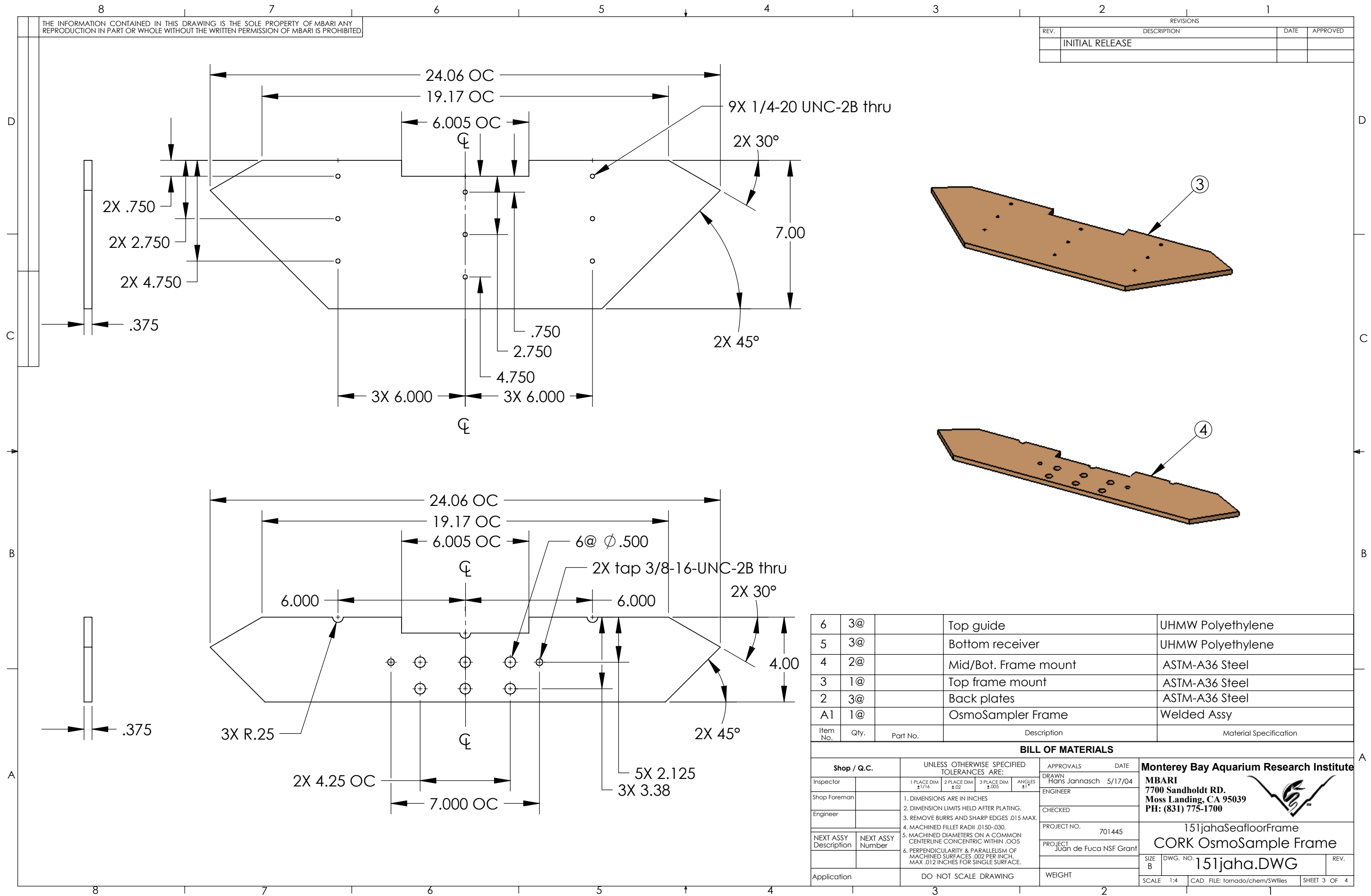
151jahaSeafloorFrame
CORK OsmoSample Frame
 DWG. NO. 151jaha.DWG
 SCALE 1:16 CAD FILE: tornado/chem/SWfiles SHEET 2 OF 4



DETAIL B
SCALE 1:3

THE INFORMATION CONTAINED IN THIS DRAWING IS THE SOLE PROPERTY OF MBARI. ANY REPRODUCTION IN PART OR WHOLE WITHOUT THE WRITTEN PERMISSION OF MBARI IS PROHIBITED.


REVISIONS			
REV.	DESCRIPTION	DATE	APPROVED
	INITIAL RELEASE		



6	3@		Top guide	UHMW Polyethylene
5	3@		Bottom receiver	UHMW Polyethylene
4	2@		Mid/Bot. Frame mount	ASTM-A36 Steel
3	1@		Top frame mount	ASTM-A36 Steel
2	3@		Back plates	ASTM-A36 Steel
A1	1@		OsmoSampler Frame	Welded Assy
Item No.	Qty.	Part No.	Description	Material Specification

BILL OF MATERIALS					
Shop / Q.C.		UNLESS OTHERWISE SPECIFIED TOLERANCES ARE:		APPROVALS	DATE
Inspector		1 PLACE DIM ±1/16	2 PLACE DIM ±.02	3 PLACE DIM ±.005	ANGLES ±1°
Shop Foreman		DRAWN: Hans Jannasch 5/17/04			
Engineer		ENGINEER			
NEXT ASSY Description		NEXT ASSY Number		CHECKED	
				PROJECT NO.	701445
				PROJECT	Juan de Fuca NSF Grant
				WEIGHT	
				SCALE	1:4
				CAD FILE:	tornado/chem/SWfiles
				SHEET	3 OF 4

Monterey Bay Aquarium Research Institute
MBARI
 7700 Sandholdt RD.
 Moss Landing, CA 95039
 PH: (831) 775-1700

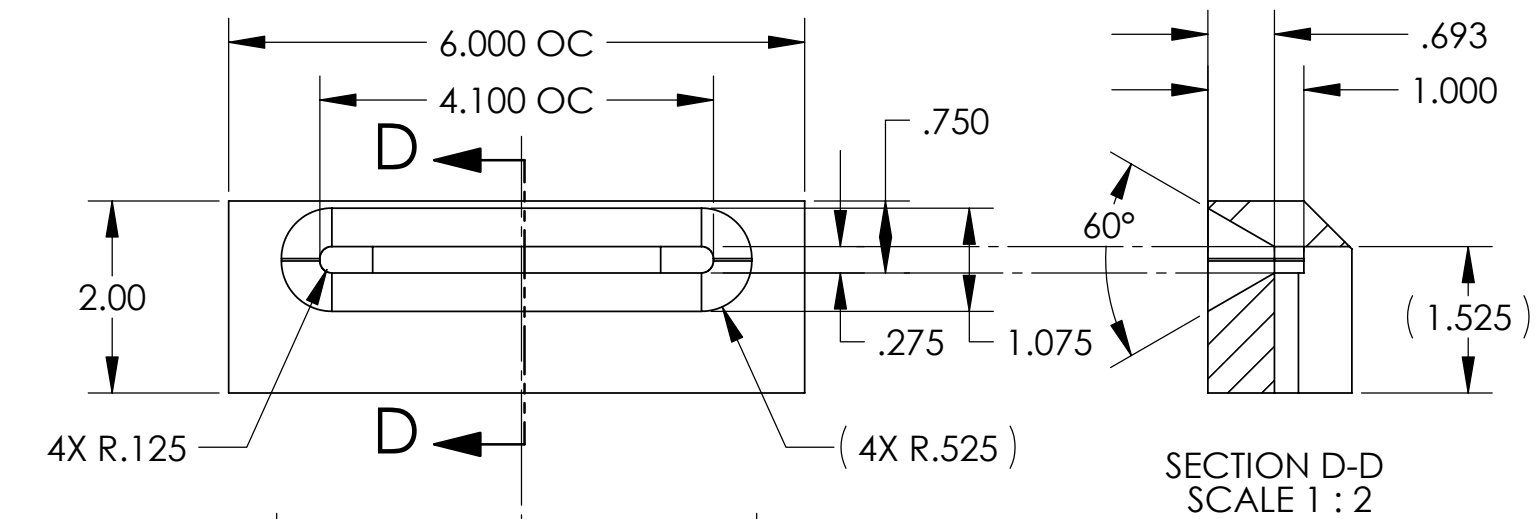


151jahaSeafloorFrame
CORK OsmoSample Frame

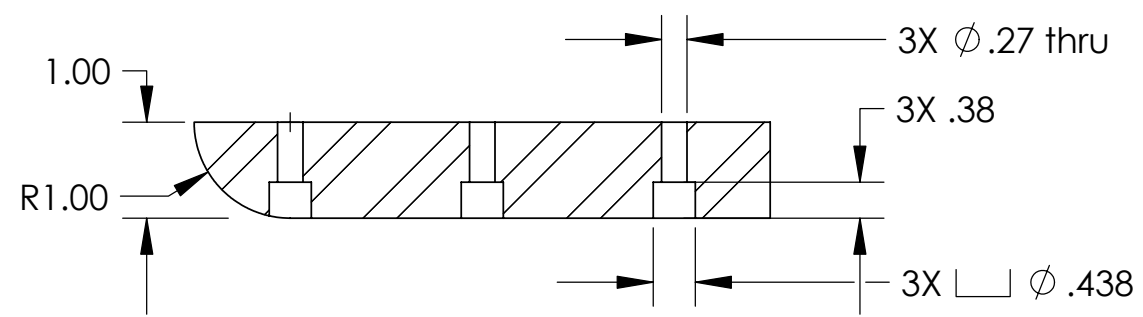
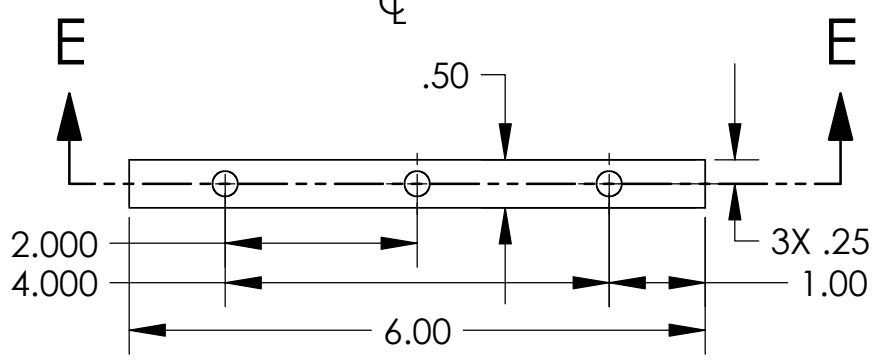
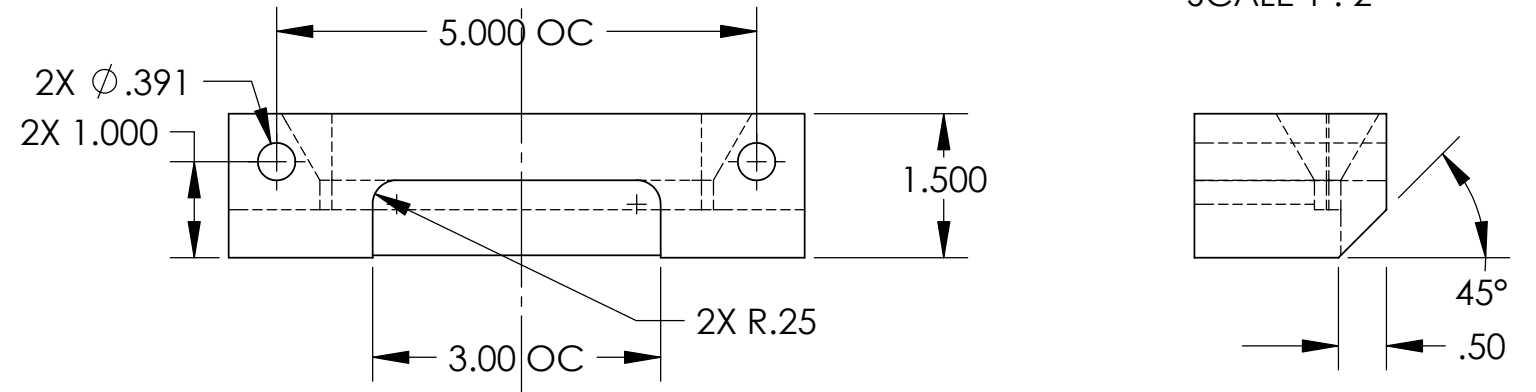
SIZE B DWG. NO. **151jaha.DWG** REV.

THE INFORMATION CONTAINED IN THIS DRAWING IS THE SOLE PROPERTY OF MBARI ANY REPRODUCTION IN PART OR WHOLE WITHOUT THE WRITTEN PERMISSION OF MBARI IS PROHIBITED

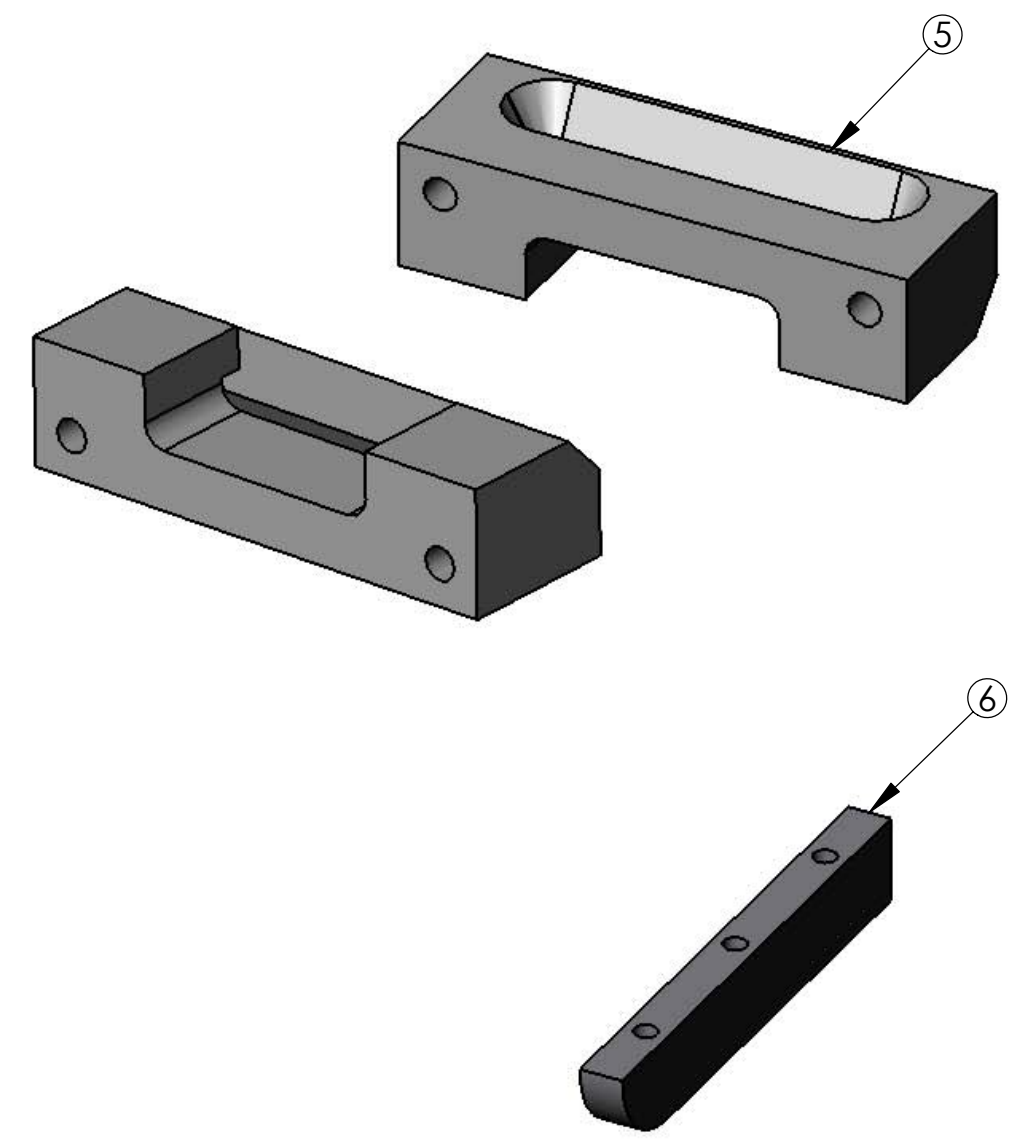
REVISIONS			
REV.	DESCRIPTION	DATE	APPROVED
	INITIAL RELEASE		




SECTION D-D
SCALE 1 : 2



SECTION E-E
SCALE 1 : 2



Item No.	Qty.	Part No.	Description	Material Specification
6	3@		Top guide	UHMW Polyethylene
5	3@		Bottom receiver	UHMW Polyethylene
4	2@		Mid/Bot. Frame mount	ASTM-A36 Steel
3	1@		Top frame mount	ASTM-A36 Steel
2	3@		Back plates	ASTM-A36 Steel
A1	1@		OsmoSampler Frame	Welded Assy

Shop / Q.C.					UNLESS OTHERWISE SPECIFIED TOLERANCES ARE:		APPROVALS	DATE	Monterey Bay Aquarium Research Institute	
Inspector		1 PLACE DIM ±1/16	2 PLACE DIM ±.02	3 PLACE DIM ±.005	ANGLES ±1°	DRAWN	Hans Jannasch	5/17/04	MBARI 7700 Sandholdt RD. Moss Landing, CA 95039 PH: (831) 775-1700	
Shop Foreman		1. DIMENSIONS ARE IN INCHES				ENGINEER				
Engineer		2. DIMENSION LIMITS HELD AFTER PLATING.				CHECKED				
NEXT ASSY Description	NEXT ASSY Number	3. REMOVE BURRS AND SHARP EDGES .015 MAX.				PROJECT NO.	701445		151jahaSeafloorFrame	
		4. MACHINED FILLET RADII .0150-.030.				PROJECT	Juan de Fuca NSF Grant		CORK OsmoSample Frame	
		5. MACHINED DIAMETERS ON A COMMON CENTERLINE CONCENTRIC WITHIN .005				SIZE	B	DWG. NO.	151jaha.DWG	REV.
		6. PERPENDICULARITY & PARALLELISM OF MACHINED SURFACES .002 PER INCH. MAX .012 INCHES FOR SINGLE SURFACE.				Application	DO NOT SCALE DRAWING	WEIGHT	SCALE	1:1
								CAD FILE:	tornado/chem/SWfiles	SHEET 4 OF 4