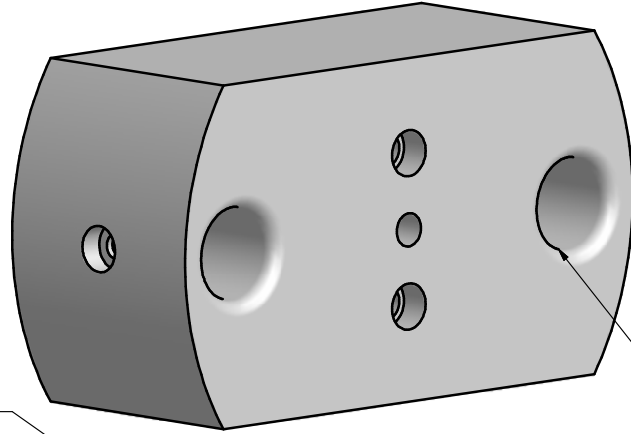


REVISED AEROQUIP DESIGN:
ALL DRAWINGS PREDATING
THIS DRAWING ARE OBSOLETE

REVISION HISTORY				
ZONE	REV	DESCRIPTION	DATE	APPROVED
	1	BREAK SHARP EDGE WITH RADIUS (.125)	1/10/2011	

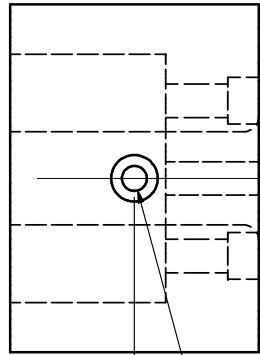
FINAL DRAWING
APPROVED: JPC

NOTES:
MODIFY EXISTING PARTS: ADD .125 RADIUS



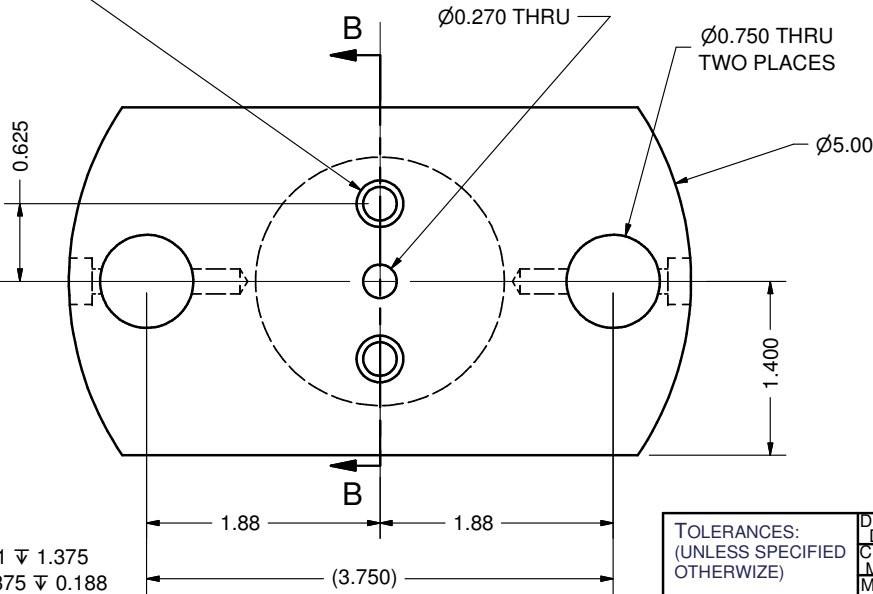
RADIUS .125 TYP
TWO PLACES

$\varnothing 0.270$ THRU
 $\sqcup \varnothing 0.375 \mp 0.250$
TWO PLACES

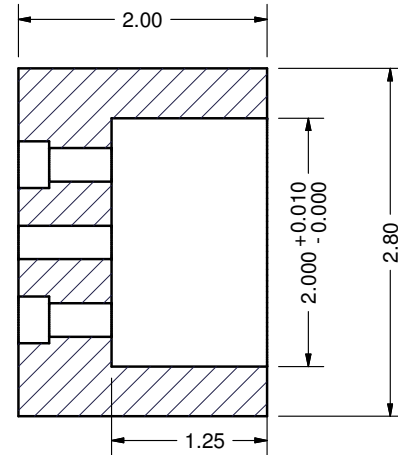


1.00

$\varnothing 0.201 \mp 1.375$
 $\sqcup \varnothing 0.375 \mp 0.188$
DRILL AND TAP 1/4-20
FULL DEPTH
BOTH SIDES



SECTION B-B
SCALE 1



<p>TOLERANCES: (UNLESS SPECIFIED OTHERWISE)</p> <p>.X = ± .030 .XX = ± .010 .XXX = ± .005 A/B = ± .0625 X' = ± 1'</p>	DRAWN	DC	1/31/2011	<p>University of Hawaii-SOEST</p> <p>TITLE</p> <p>Quick Conect Handle Chassis</p>		
	CHECKED	MW				
	APPROVED	DC				
	MFG					
	SIZE	B	DWG NO	QC-HandleChassisRev1	REV	1
	SCALE					