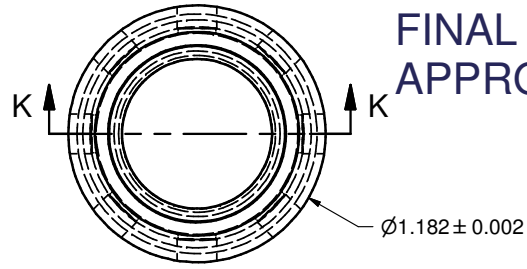


REVISED AEROQUIP DESIGN:  
ALL DRAWINGS PREDATING  
THIS DRAWING ARE OBSOLETE

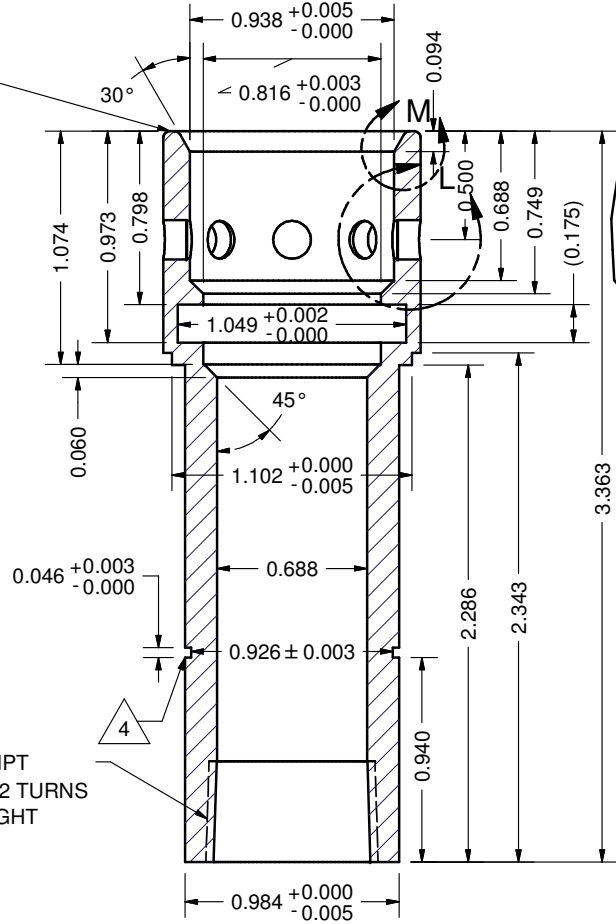
FINAL DRAWING  
APPROVED: JPC

REVISION HISTORY				
ZONE	REV	DESCRIPTION	DATE	APPROVED
	4	SWITCH TO .177 BALLS W LARGER STEP	1/31/2011	
		REMOVE STEP AND ADD RETAINER RING		
		INCREASE LEAD IN DEPTH		

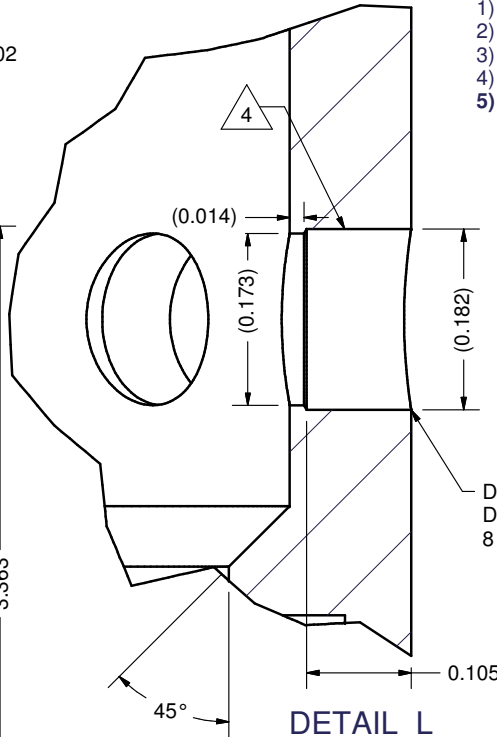
- NOTES:  
 1) MAKE 1 Gr 2 PART, TIODIZE TYPE IV  
 2) MAKE 2 316SST PARTS  
 3) SURFACE FINISH SHALL BE 32 MICROINCH APPROX  
 4) BREAK ORING GROOVE EDGES .005 APPROX (-211 ORING)  
 5) TEST FIRST PART FOR FIT AND FUNCTION



SECTION K-K  
SCALE 1.75



1/2 - 14 NPT  
3 TO 3-1/2 TURNS  
HAND TIGHT



DETAIL L  
SCALE 8

RADIUS THESE EDGES .03 APPROX  
 RADIUS THIS EDGE .01 APPROX

DETAIL M  
SCALE 5

TOLERANCES: (UNLESS SPECIFIED OTHERWISE) .X = ± .030 .XX = ± .010 .XXX = ± .005 A/B = ± .0625 X' = ± 1'	DRAWN	DC	1/31/2011	University of Hawaii-SOEST	
	CHECKED				
	MFG			TITLE	
	APPROVED			Geo Microbe Quick Disconnect Inner Tube	
	SIZE	B	DWG NO	QCInnerTubeExtendedR4	REV
	SCALE				4
			SHEET 1 OF 1		