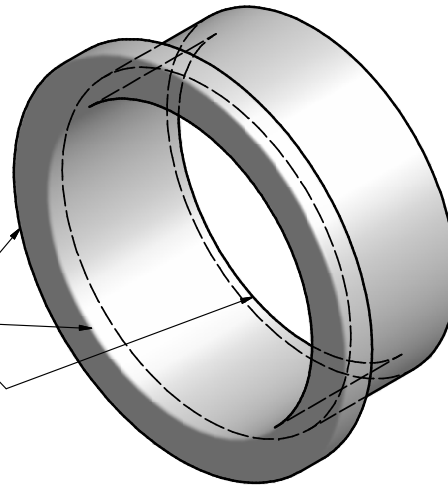
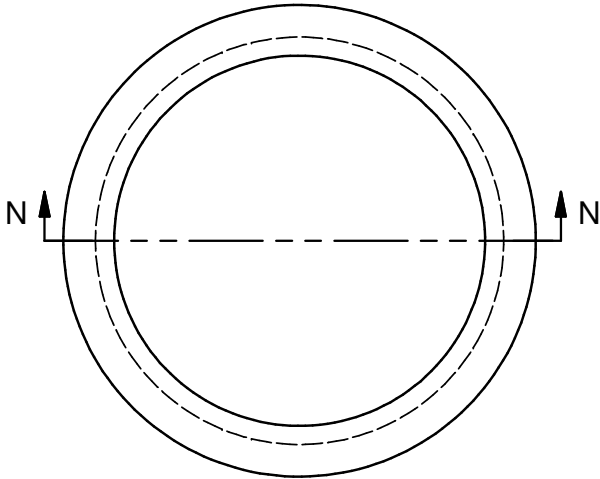


REVISED AEROQUIP DESIGN:
ALL DRAWINGS PREDATING
THIS DRAWING ARE OBSOLETE

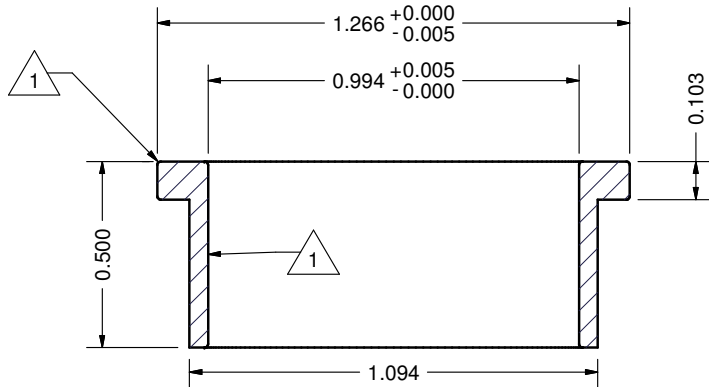
FINAL DRAWING
APPROVED: JPC

REVISION HISTORY				
ZONE	REV	DESCRIPTION	DATE	APPROVED
	1	ID MOD TO RIDE ON STEPLESS INNER SLV	1/31/2011	
		INCREASED BEARING LENGTH		
		ADDED ANTI-GALL RADII		

- NOTES:
 1) MAKE 1 GR2 TITANIUM PART, TIODIZE TYPE IV
 2) MAKE 2 316SS PARTS
 3) SURFACE FINISH SHALL BE 32 MICROINCH APPROX
 4) TEST FIRST PART FOR FIT AND FUNCTION



RADIUS THESE EDGES .01 APPROX



SECTION N-N
SCALE 3

TOLERANCES: (UNLESS SPECIFIED OTHERWISE) .X = ± .030 .XX = ± .010 .XXX = ± .005 A/B = ± .0625 X' = ± 1'	DRAWN	1/31/2011	University of Hawaii-SOEST	
	DC			
	CHECKED		TITLE	
	MFG			
APPROVED		Geo Microbe Quick Disconnect Spring Sleeve		
		SIZE	DWG NO	REV
		B	QCSpringSleeveR1	1
		SCALE	SHEET 1 OF 1	