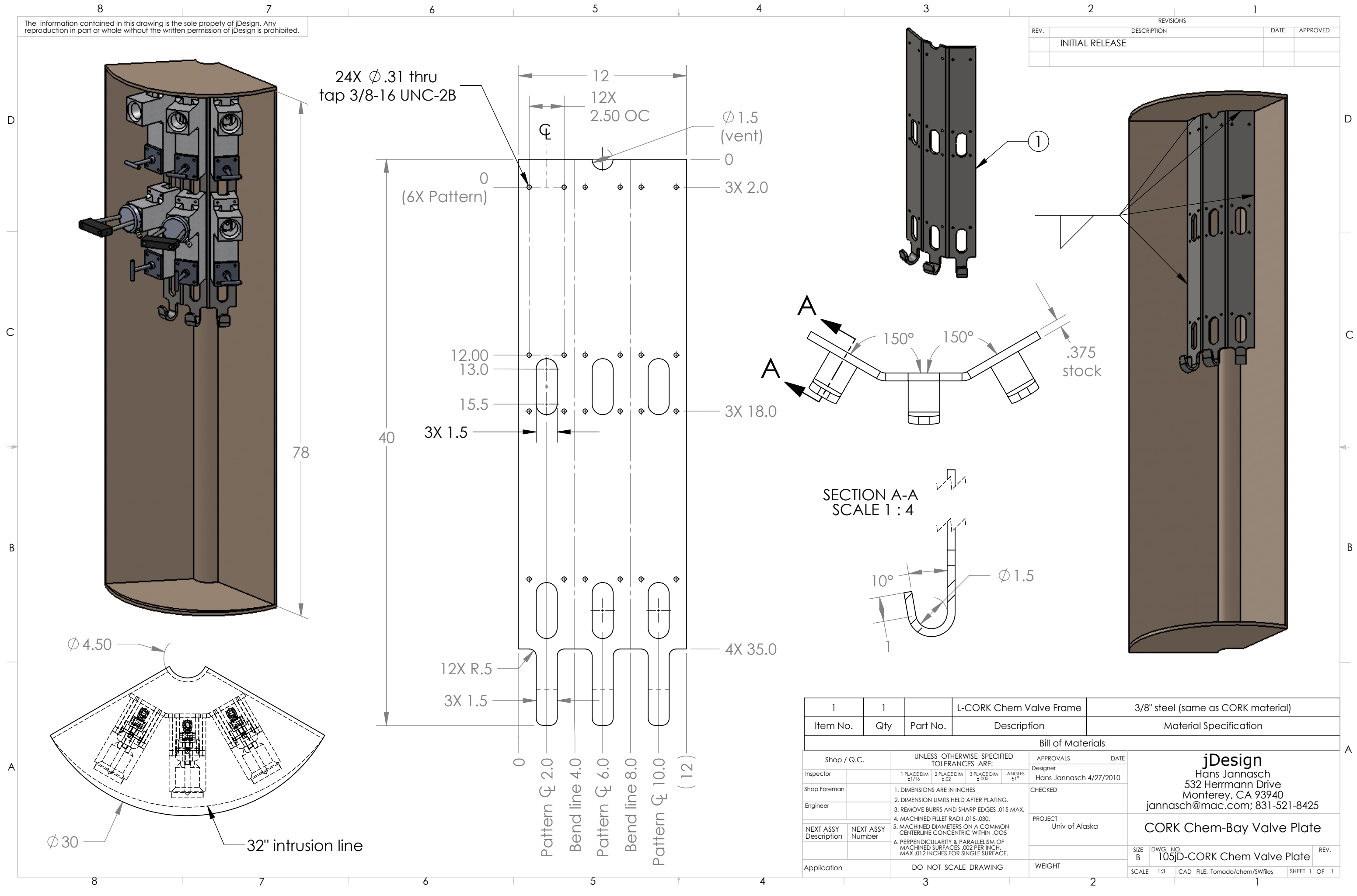


The information contained in this drawing is the sole property of jDesign. Any reproduction in part or whole without the written permission of jDesign is prohibited.

REVISIONS			
REV.	DESCRIPTION	DATE	APPROVED
	INITIAL RELEASE		



1	1	L-CORK Chem Valve Frame	3/8" steel (same as CORK material)
Item No.	Qty	Part No.	Description
			Material Specification

Bill of Materials			
Shop / Q.C.	UNLESS OTHERWISE SPECIFIED TOLERANCES ARE:	APPROVALS	DATE
Inspector	1 PLACE DIM ±.1/16 2 PLACE DIM ±.02 3 PLACE DIM ±.005 ANGLES ±1°	Designer Hans Jannasch 4/27/2010	
Shop Foreman	1. DIMENSIONS ARE IN INCHES 2. DIMENSION LIMITS HELD AFTER PLATING. 3. REMOVE BURRS AND SHARP EDGES .015 MAX. 4. MACHINED FILLET RADII .015-.030.	CHECKED	
Engineer	5. MACHINED DIAMETERS ON A COMMON CENTERLINE CONCENTRIC WITHIN .005 6. PERPENDICULARITY & PARALLELISM OF MACHINED SURFACES .002 PER INCH. MAX .012 INCHES FOR SINGLE SURFACE.	PROJECT Univ of Alaska	
NEXT ASSY Description	NEXT ASSY Number	CORK Chem-Bay Valve Plate	
Application	DO NOT SCALE DRAWING	WEIGHT	

**jDesign**  
Hans Jannasch  
532 Herrmann Drive  
Monterey, CA 93940  
jannasch@mac.com; 831-521-8425

**CORK Chem-Bay Valve Plate**

SIZE B DWG. NO. 105jD-CORK Chem Valve Plate REV.  

SCALE 1:3 CAD FILE: Tornado/chem/SWfiles SHEET 1 OF 1