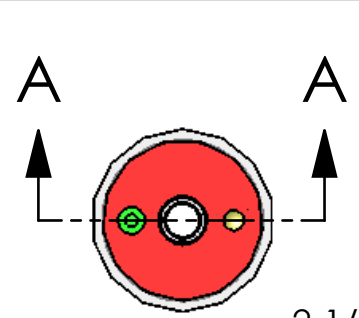
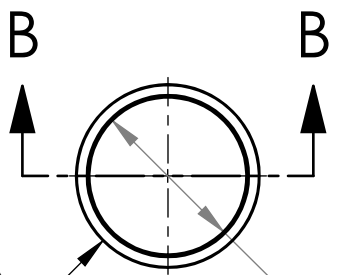


THE INFORMATION CONTAINED IN THIS DRAWING IS THE SOLE PROPERTY OF MBARI ANY REPRODUCTION IN PART OR WHOLE WITHOUT THE WRITTEN PERMISSION OF MBARI IS PROHIBITED.

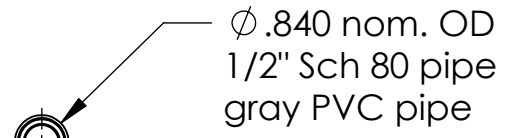
REVISIONS			
REV.	DESCRIPTION	DATE	APPROVED
	INITIAL RELEASE		



Ø 2.875 nom OD
2-1/2" Sch 40 clear PVC pipe

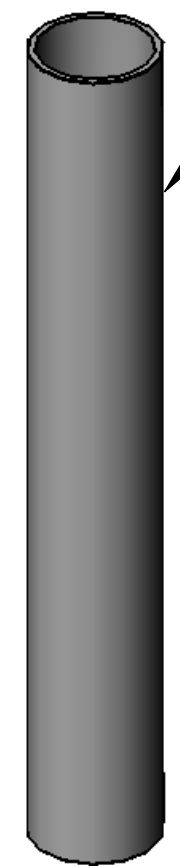


Ø 2.445 nom. ID



Ø .840 nom. OD
1/2" Sch 80 pipe
gray PVC pipe

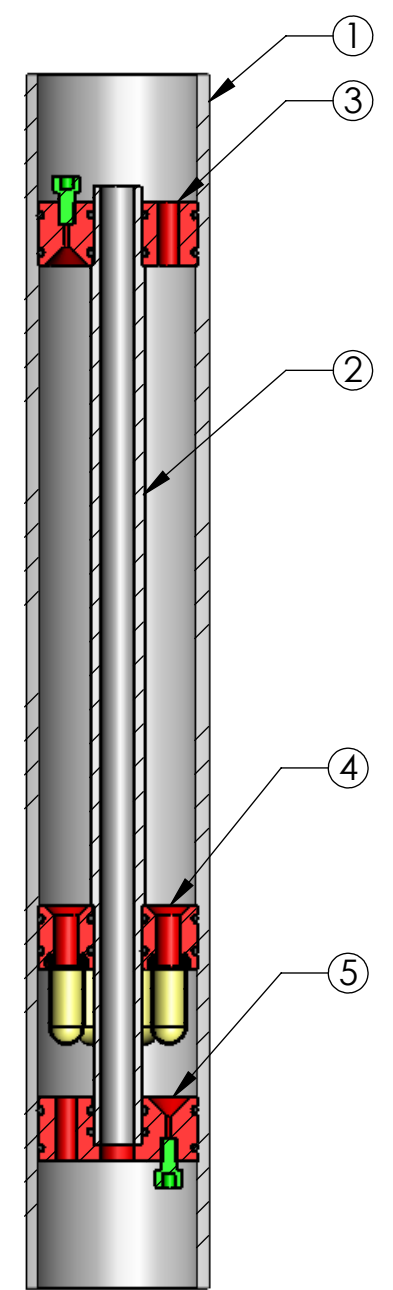
Ø .530 nom. ID
thru



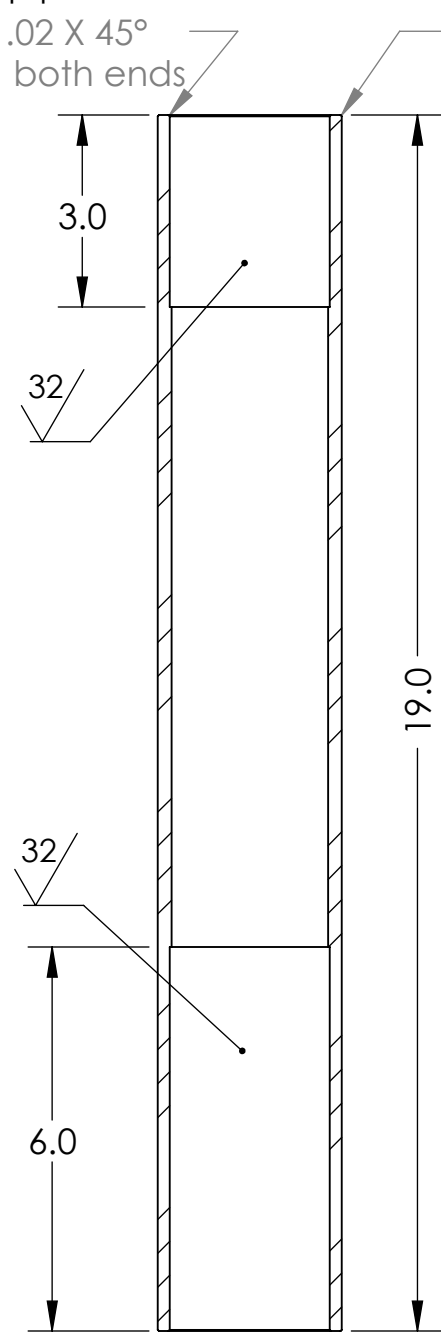
①



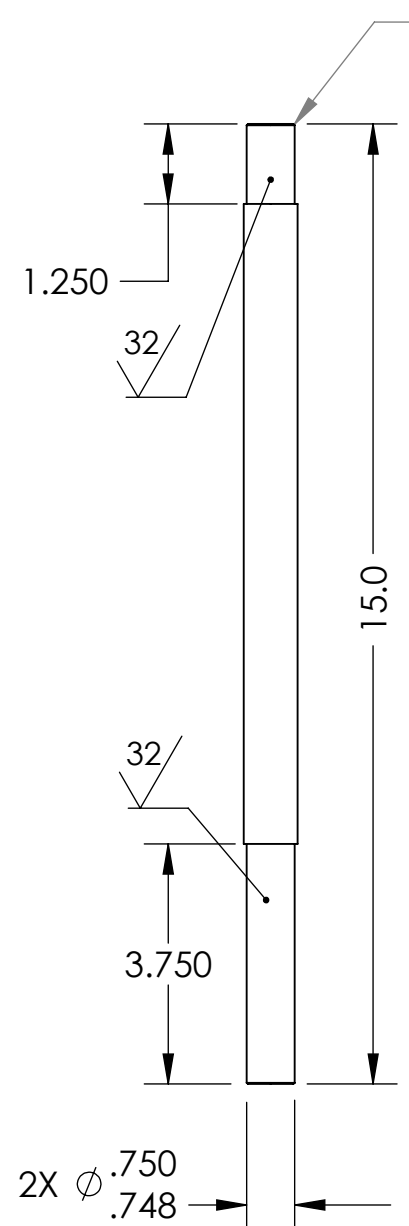
②



SECTION A-A
SCALE 1 : 3




SECTION B-B
SCALE 1 : 3



2X Ø .750
.748
(both ends)

Item No.	Qty	Part No.	Description	Material Specification
5	1		OS pump Bottom	1" PVC plate
4	1		OS pump Middle	1" PVC plate
3	1		OS pump Top	1" PVC plate
2	1		OS pump core	1/2" Sch 80 Gray PVC pipe
1	1		OS pump housing	2-1/2" Sch 40 Clear PVC pipe

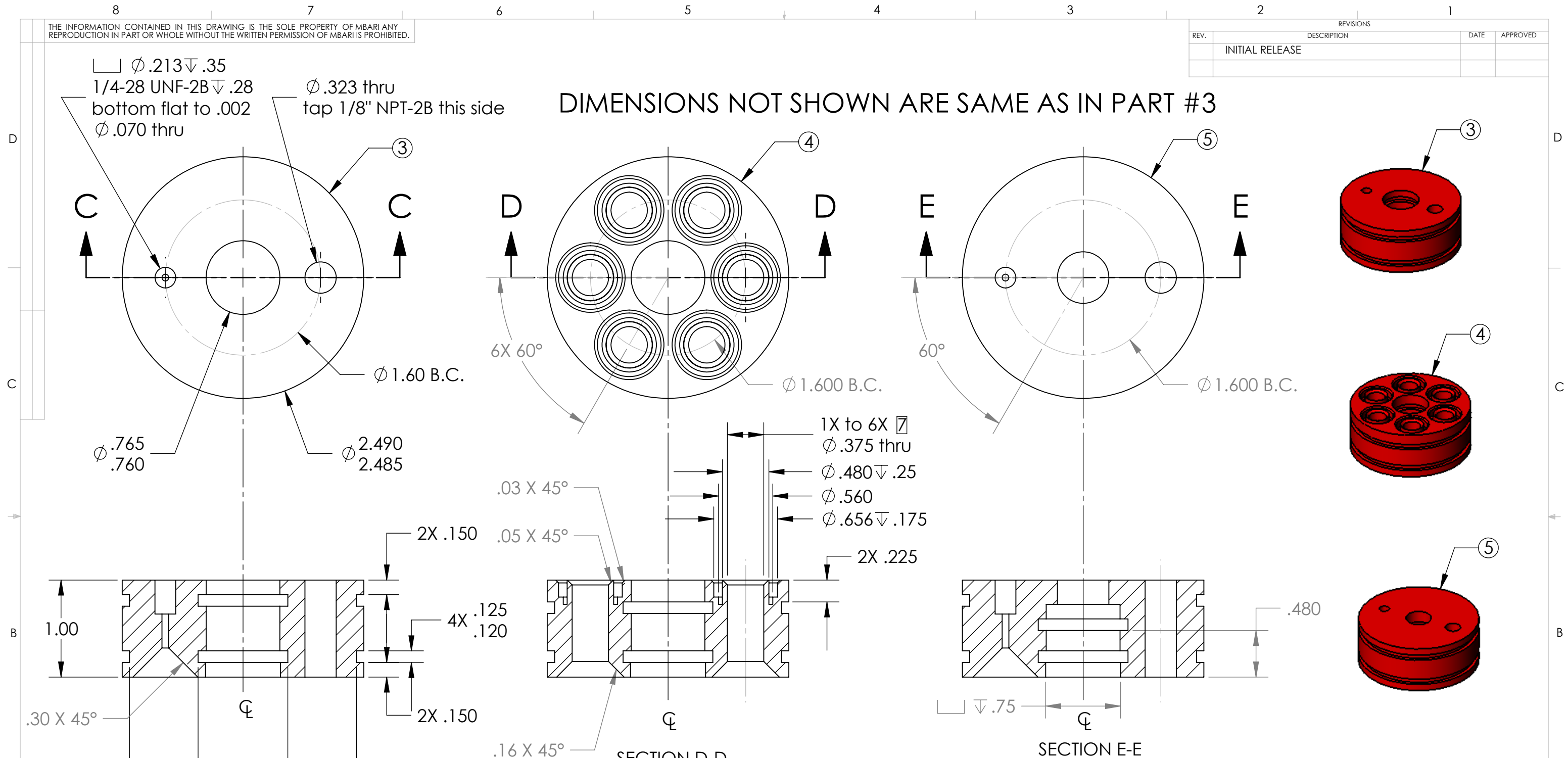
Bill of Materials

Shop / Q.C.	UNLESS OTHERWISE SPECIFIED TOLERANCES ARE:	APPROVALS	DATE	Monterey Bay Aquarium Research Institute MBARI 7700 Sandholdt RD. Moss Landing, CA 95039 PH: (831) 775-1700 
Inspector	1 PLACE DIM ±.1/16	DRAWN	06/12/09	
Shop Foreman	2 PLACE DIM ±.02	Hans Jannasch	ENGINEER	
Engineer	3 PLACE DIM ±.005	CHECKED		
NEXT ASSY Description	ANGLES ±1°	PROJECT NO.		
NEXT ASSY Number	1. DIMENSIONS ARE IN INCHES 2. DIMENSION LIMITS HELD AFTER PLATING. 3. REMOVE BURRS AND SHARP EDGES .015 MAX. 4. MACHINED FILLET RADII .015-.030. 5. MACHINED DIAMETERS ON A COMMON CENTERLINE CONCENTRIC WITHIN .005 6. PERPENDICULARITY & PARALLELISM OF MACHINED SURFACES .002 PER INCH. MAX .012 INCHES FOR SINGLE SURFACE.	PROJECT	NSF OsmoSamplers	
Application	DO NOT SCALE DRAWING	WEIGHT		SIZE B DWG. NO. 231jaha-pvcOS-JdF-2009 SCALE 1:3 CAD FILE: Tomado/chem/SWfiles SHEET 1 OF 2

THE INFORMATION CONTAINED IN THIS DRAWING IS THE SOLE PROPERTY OF MBARI ANY REPRODUCTION IN PART OR WHOLE WITHOUT THE WRITTEN PERMISSION OF MBARI IS PROHIBITED.

REVISIONS			
REV.	DESCRIPTION	DATE	APPROVED
	INITIAL RELEASE		

DIMENSIONS NOT SHOWN ARE SAME AS IN PART #3




2X ϕ .927
 ϕ .925 (-116 O-ring)
 Reduced compression (15%)
 2X ϕ 2.338
 ϕ 2.336 (-141 O-ring)
 Reduced compression (15%)

Note 7: Pumps should be specified with number of membranes, ranging from 1 to 6. Please machine any appropriate number of membrane positions as requested.

5	1		OS pump Bottom	1" PVC plate
4	1		OS pump Middle	1" PVC plate
3	1		OS pump Top	1" PVC plate
Item No.	Qty	Part No.	Description	Material Specification

Bill of Materials			
Shop / Q.C.	UNLESS OTHERWISE SPECIFIED TOLERANCES ARE:		
Inspector	1 PLACE DIM \pm 1/16	2 PLACE DIM \pm .02	3 PLACE DIM \pm .005
Shop Foreman	ANGLES \pm 1°		
Engineer	1. DIMENSIONS ARE IN INCHES		
	2. DIMENSION LIMITS HELD AFTER PLATING.		
	3. REMOVE BURRS AND SHARP EDGES .015 MAX.		
	4. MACHINED FILLET RADII .015-.030.		
	5. MACHINED DIAMETERS ON A COMMON CENTERLINE CONCENTRIC WITHIN .005		
	6. PERPENDICULARITY & PARALLELISM OF MACHINED SURFACES .002 PER INCH. MAX .012 INCHES FOR SINGLE SURFACE.		
NEXT ASSY Description	NEXT ASSY Number	APPROVALS	DATE
		DRAWN	06/12/09
		ENGINEER	
		CHECKED	
		PROJECT NO.	
		PROJECT	NSF OsmoSamplers
Application	DO NOT SCALE DRAWING	WEIGHT	

Monterey Bay Aquarium Research Institute
 MBARI
 7700 Sandholdt RD.
 Moss Landing, CA 95039
 PH: (831) 775-1700



PVC OsmoSampler Pumps
 (for Juan de Fuca 2009)

SIZE B DWG. NO. 231jaha-pvcOS-JdF-2009 REV.

SCALE 1:3 CAD FILE: Tomado/chem/SWfiles SHEET 2 OF 2