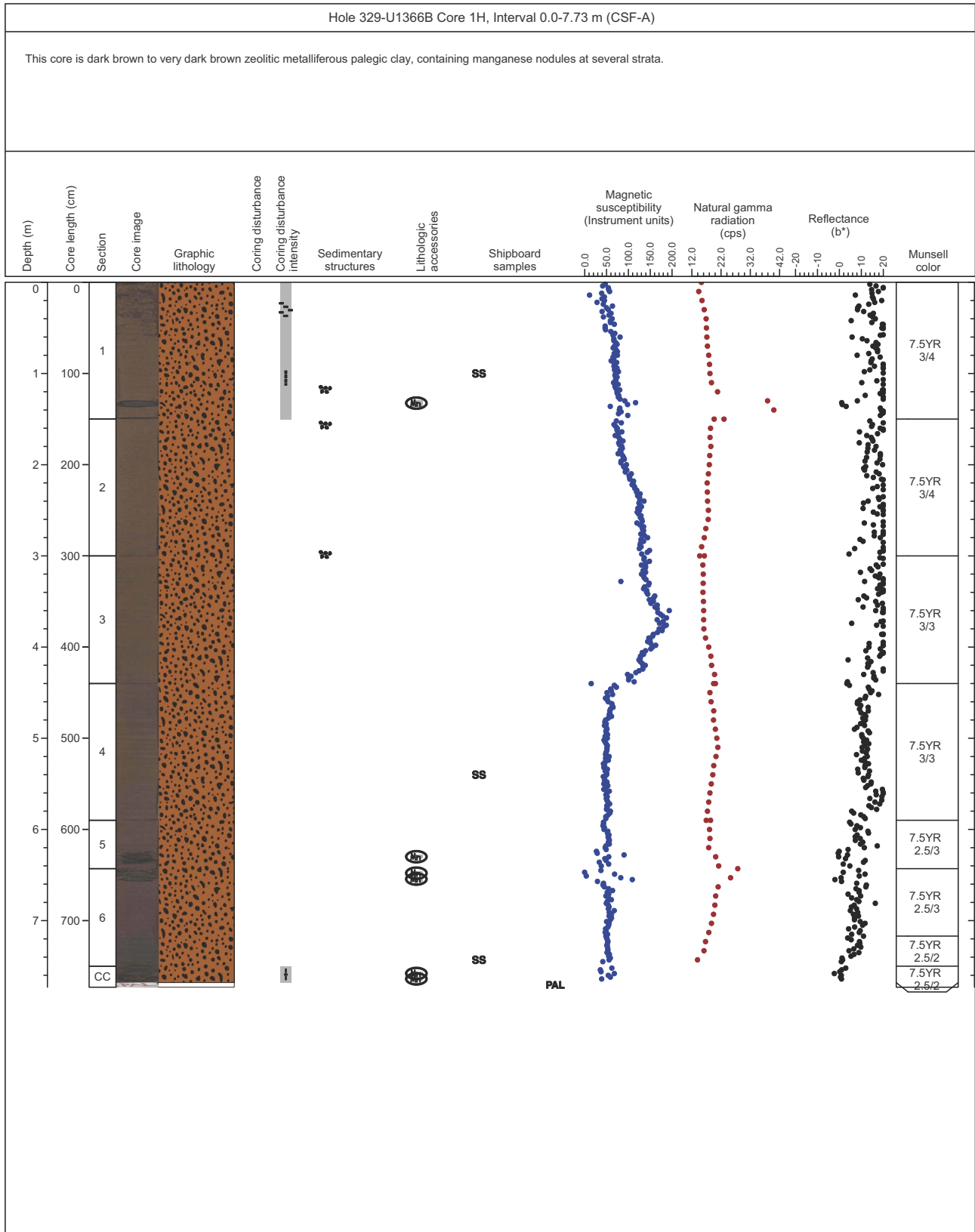
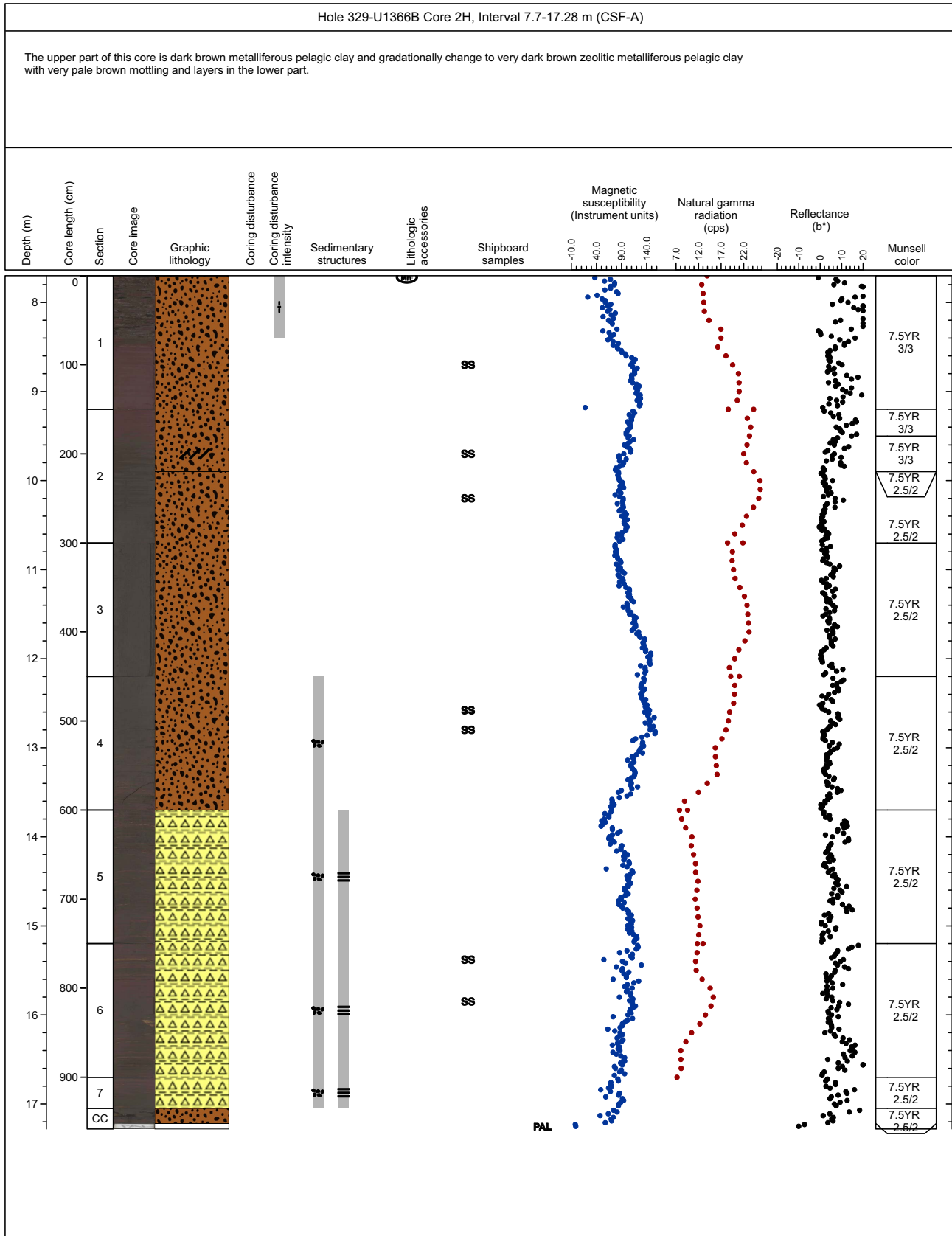


# Core Photo

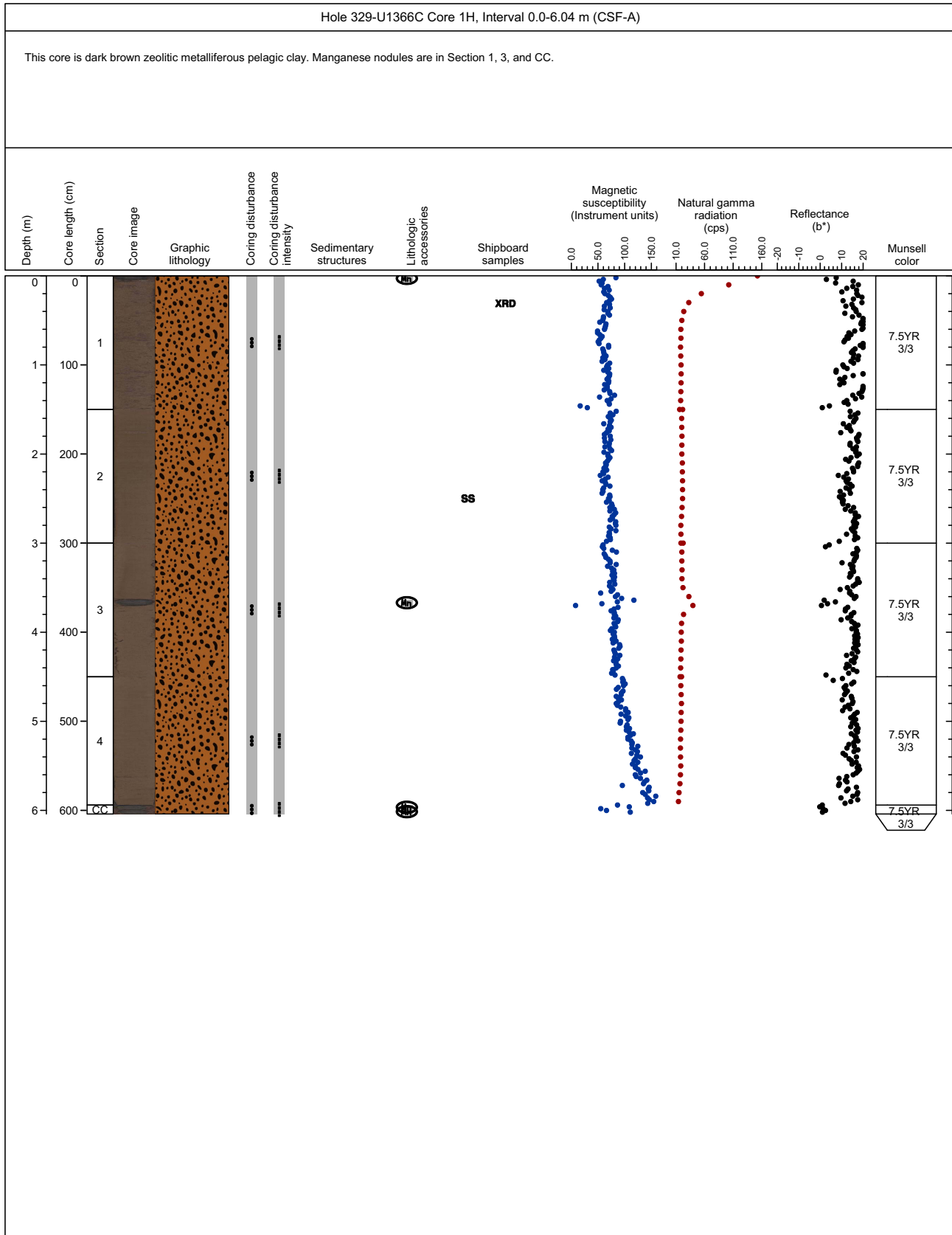
U1366A-1H: NO RECOVERY



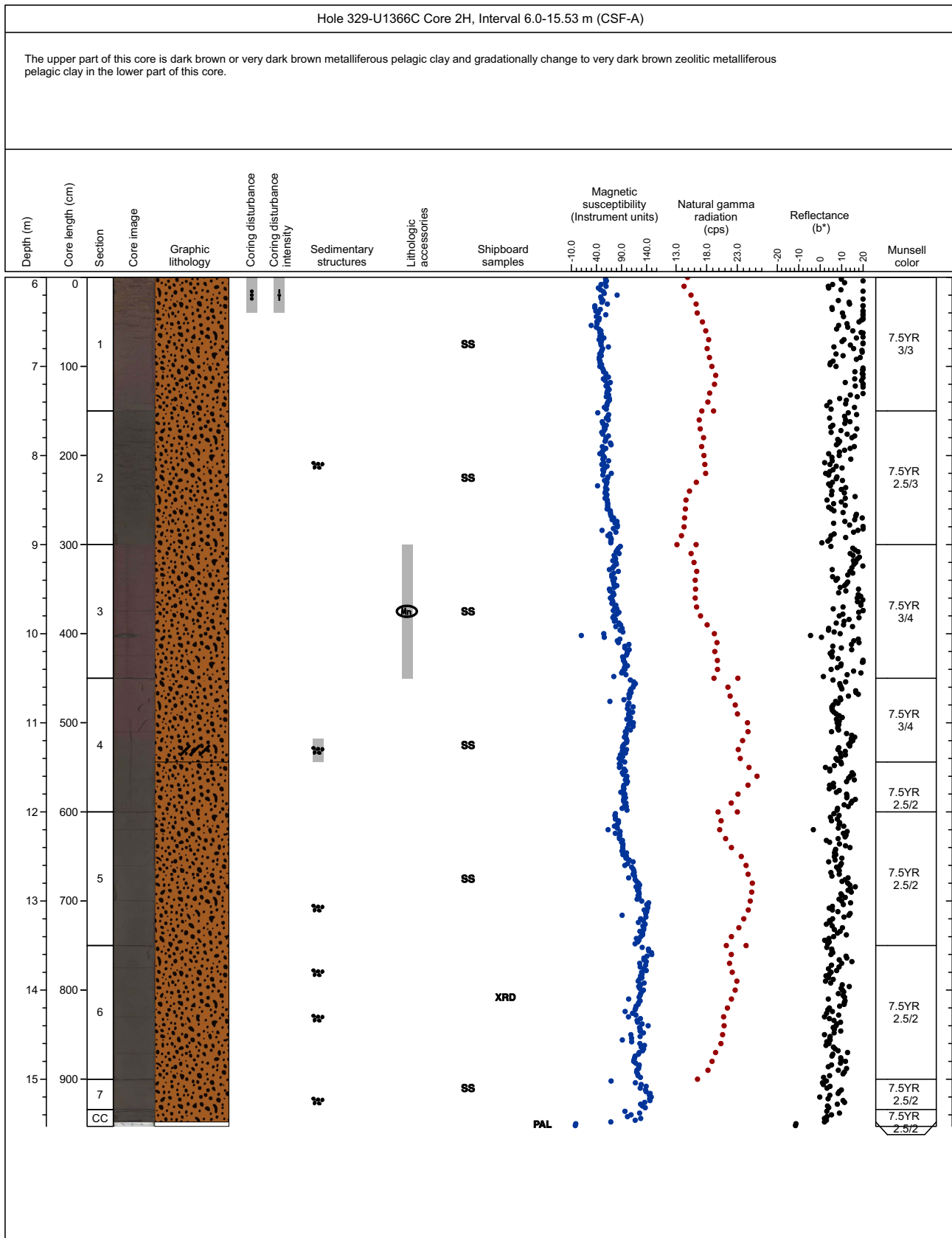
### Core Photo



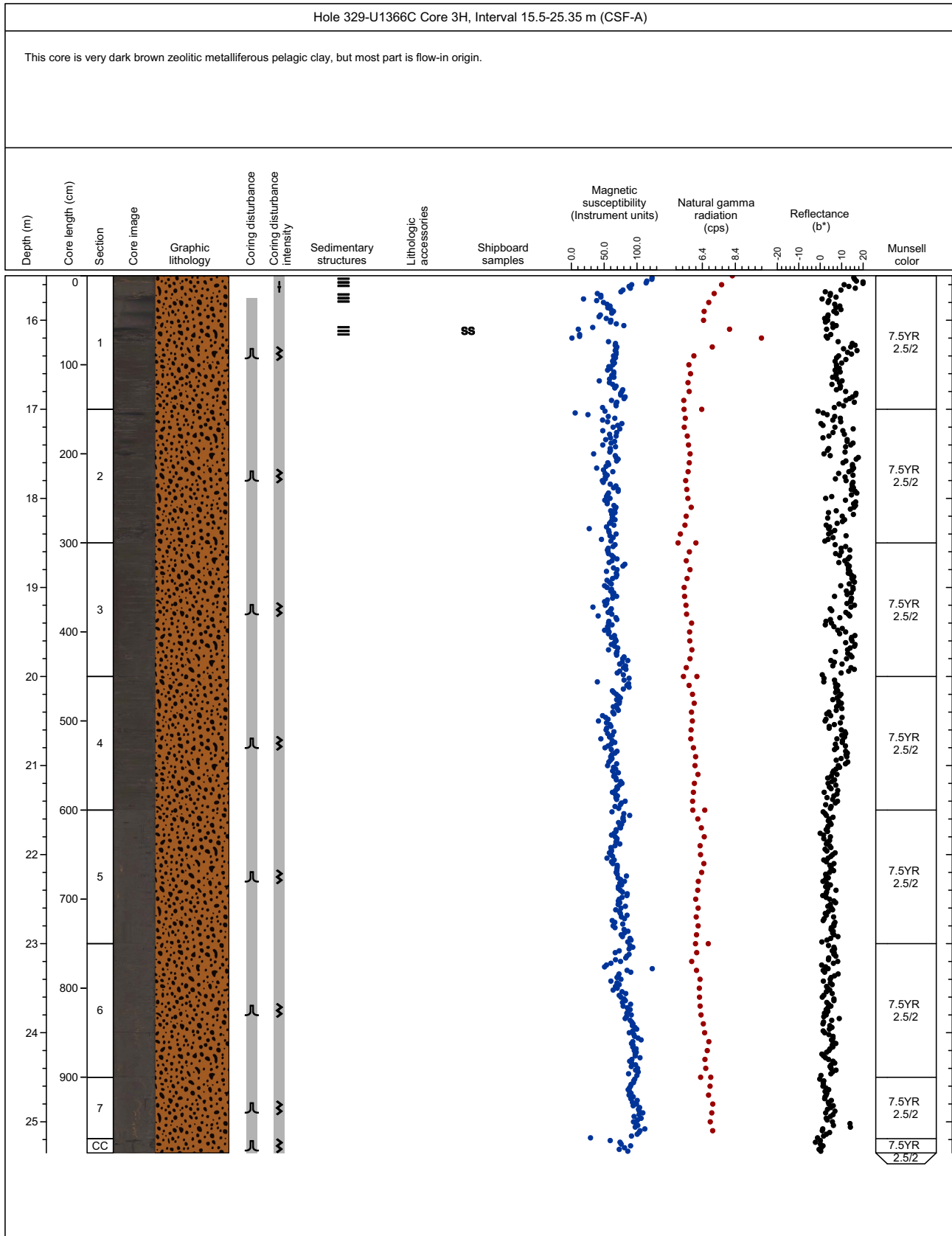
# Core Photo



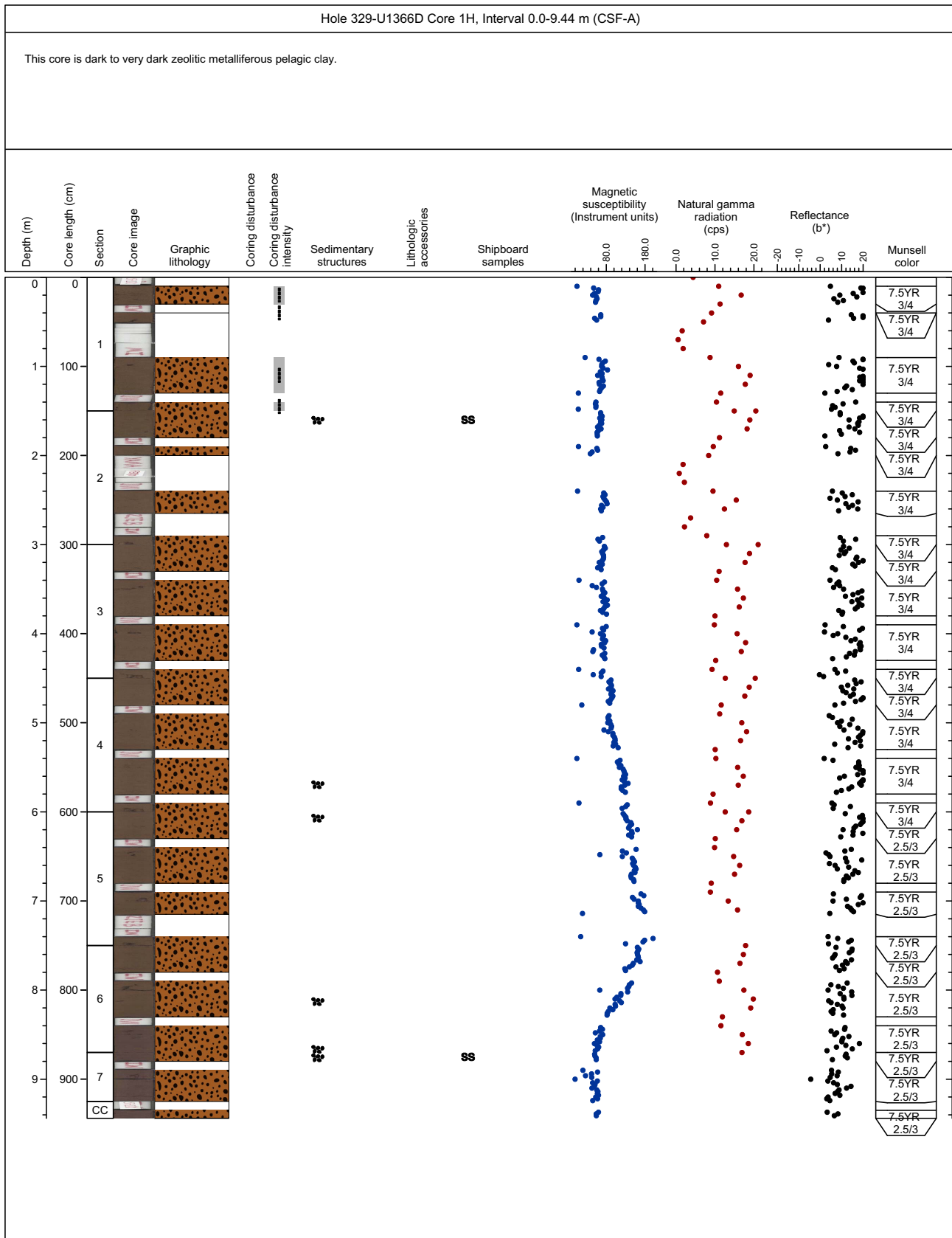
# Core Photo



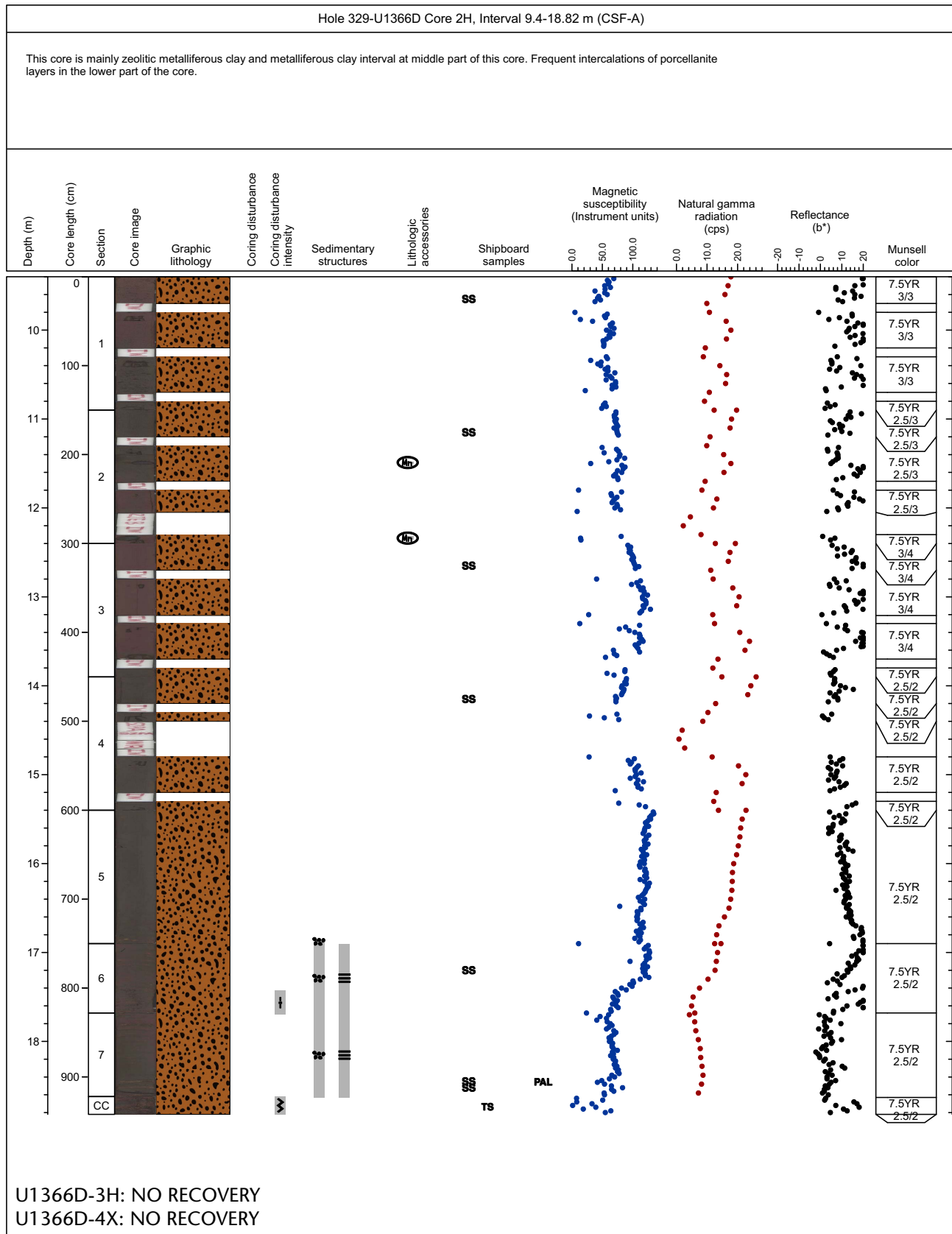
# Core Photo



# Core Photo

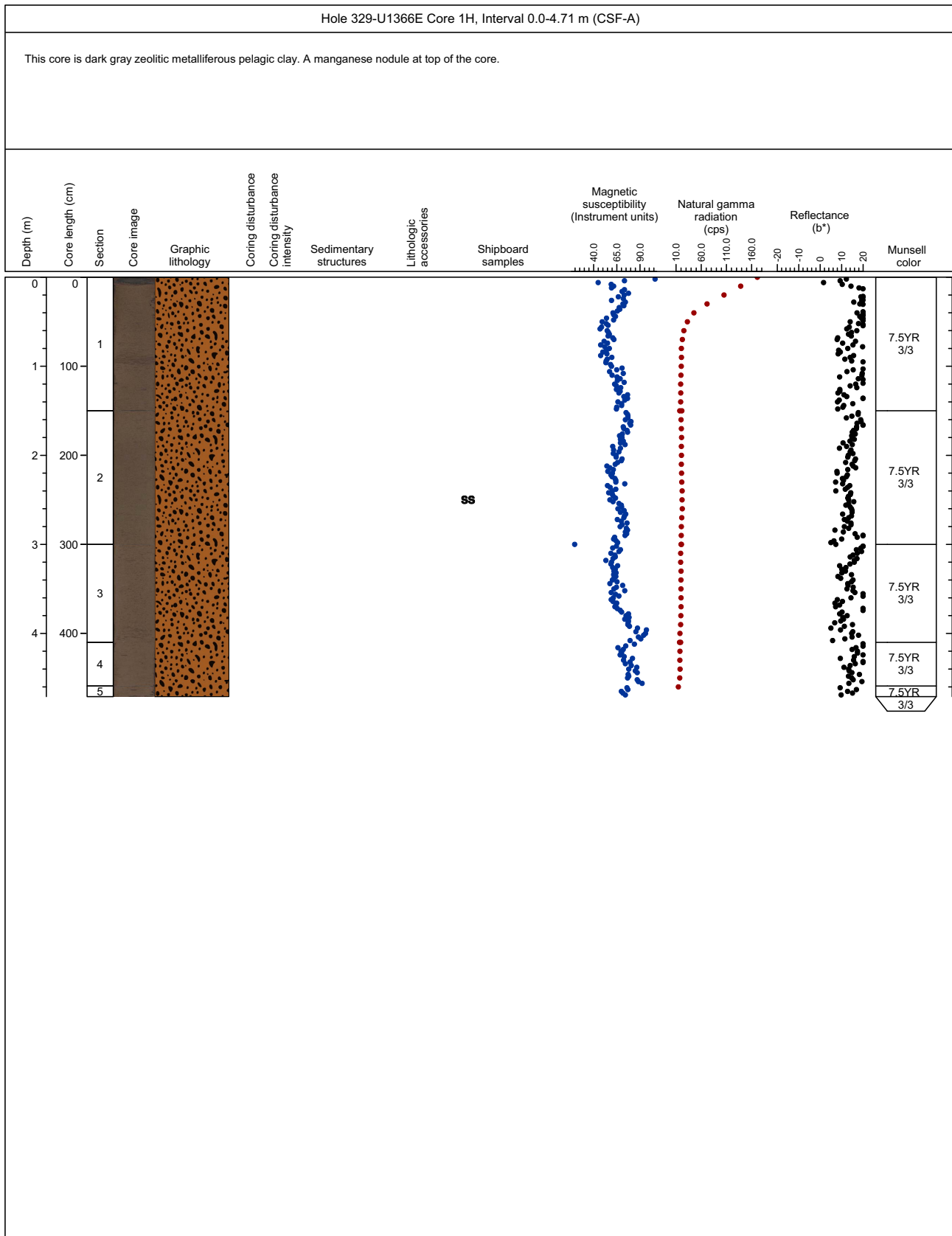


# Core Photo



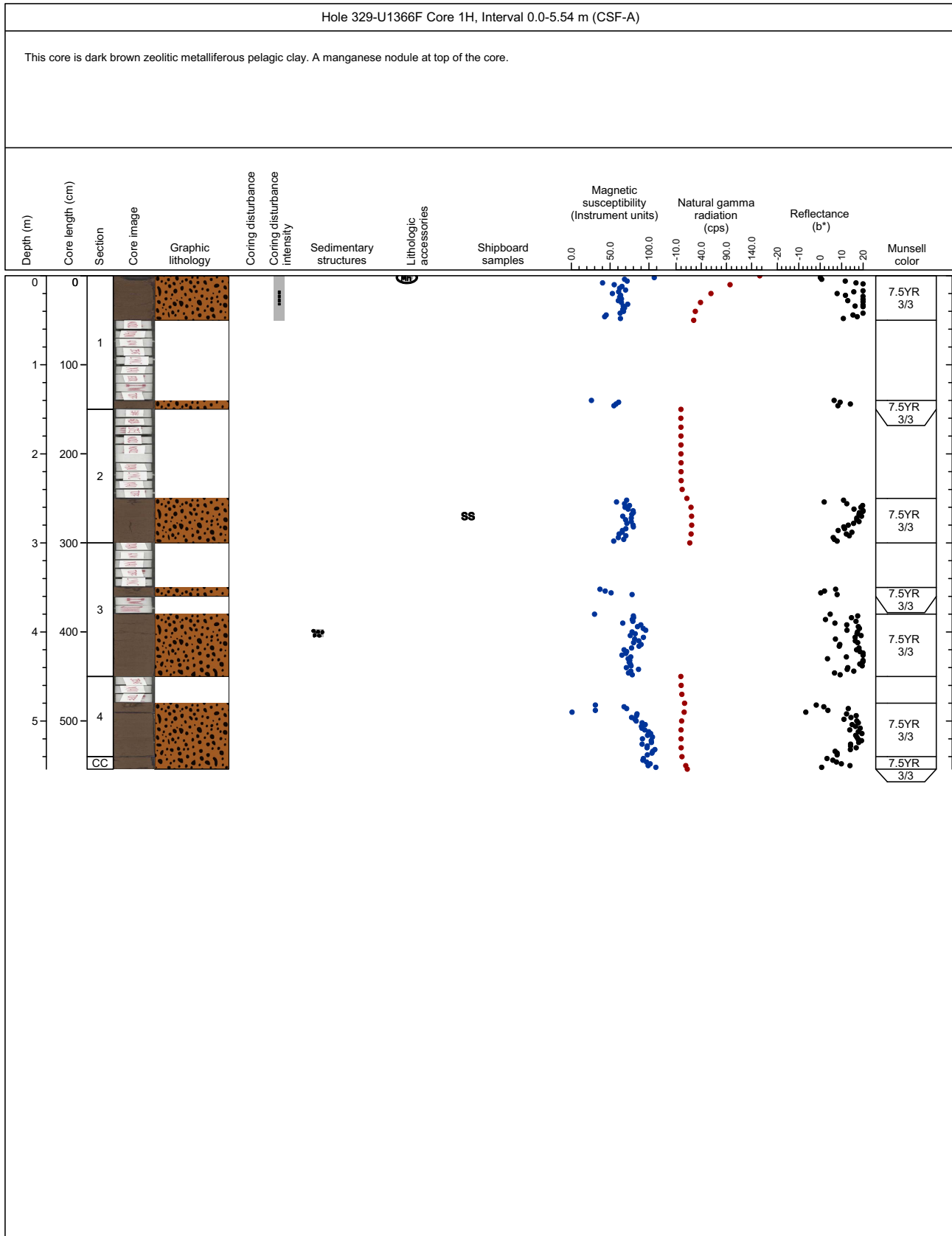


# Core Photo

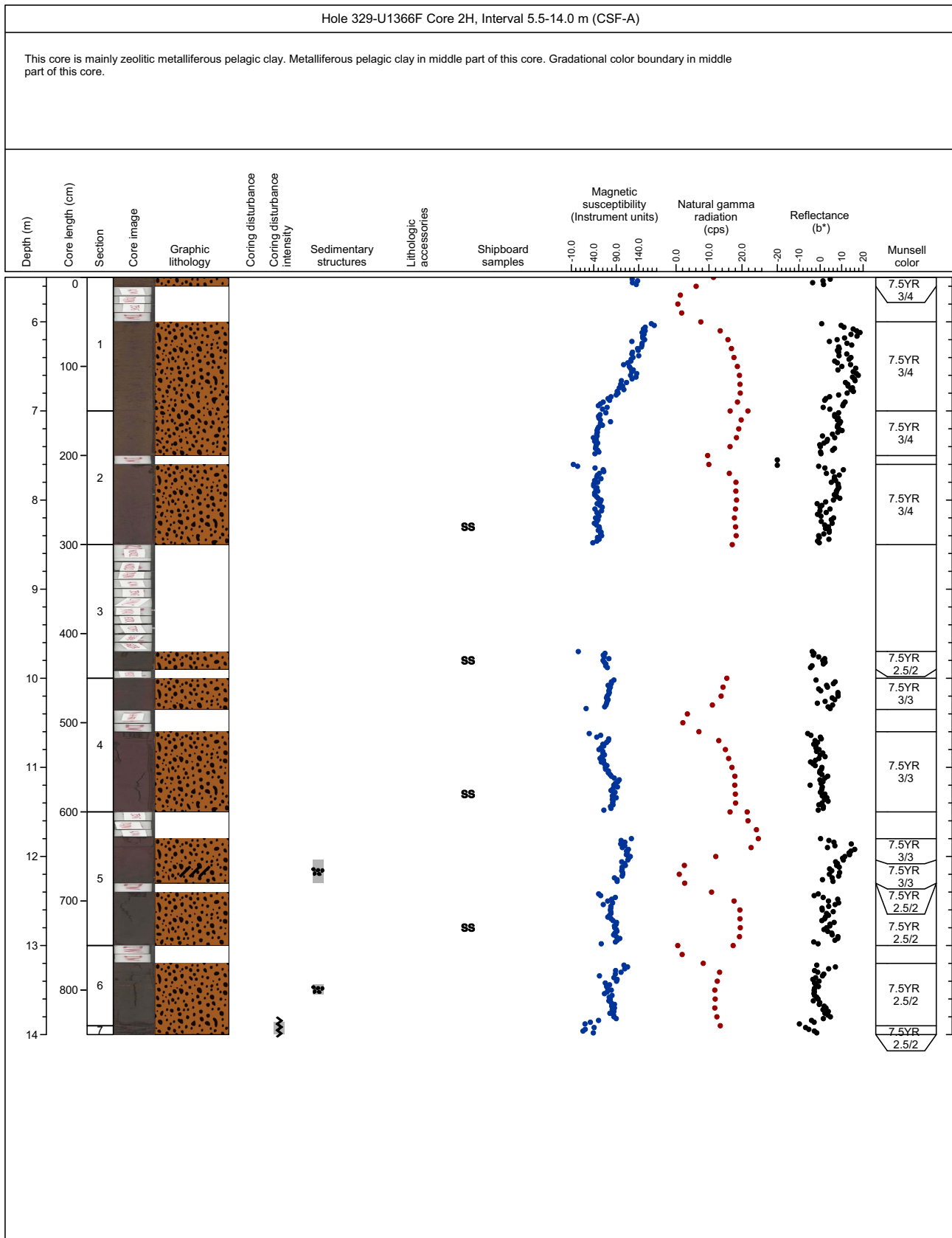




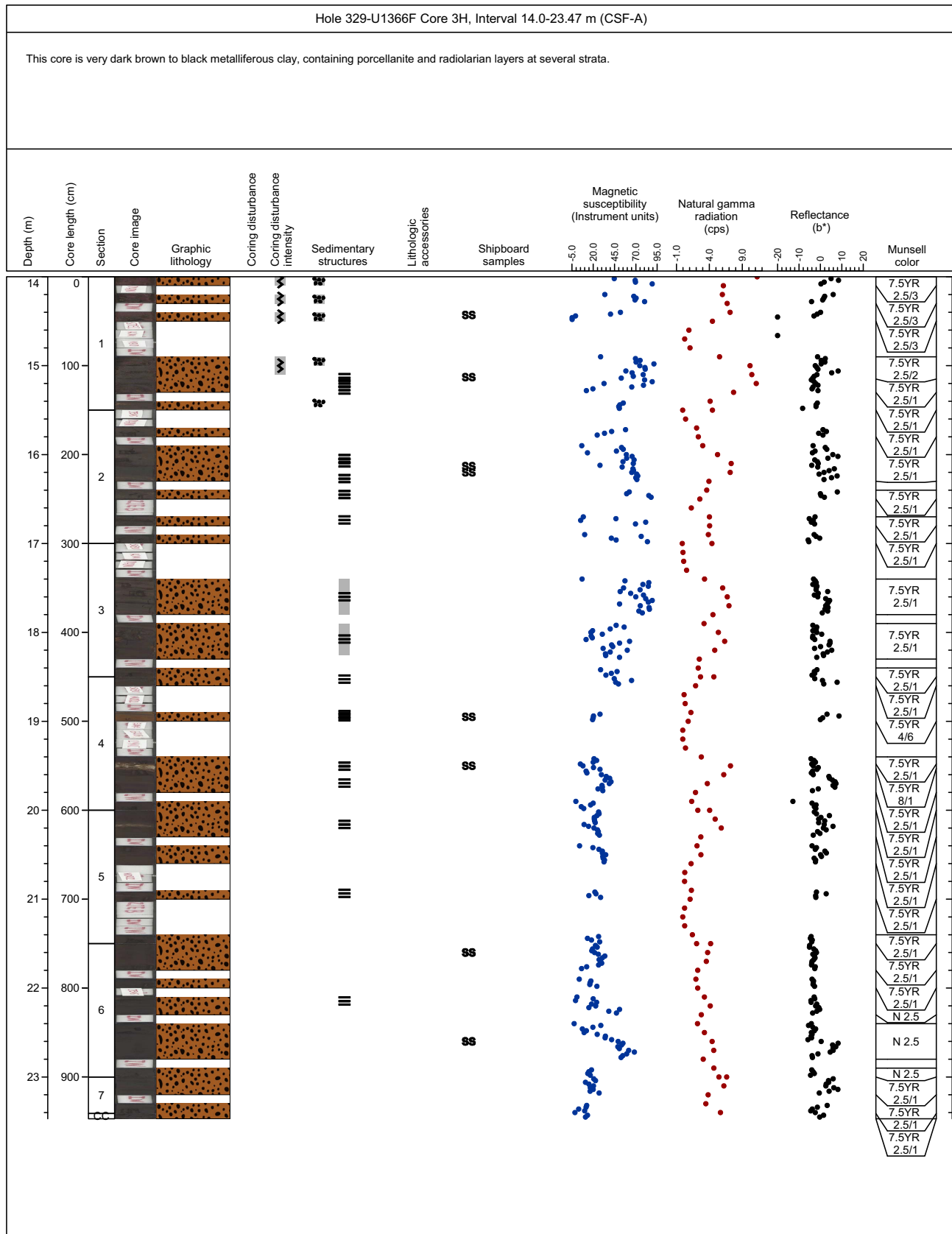
### Core Photo



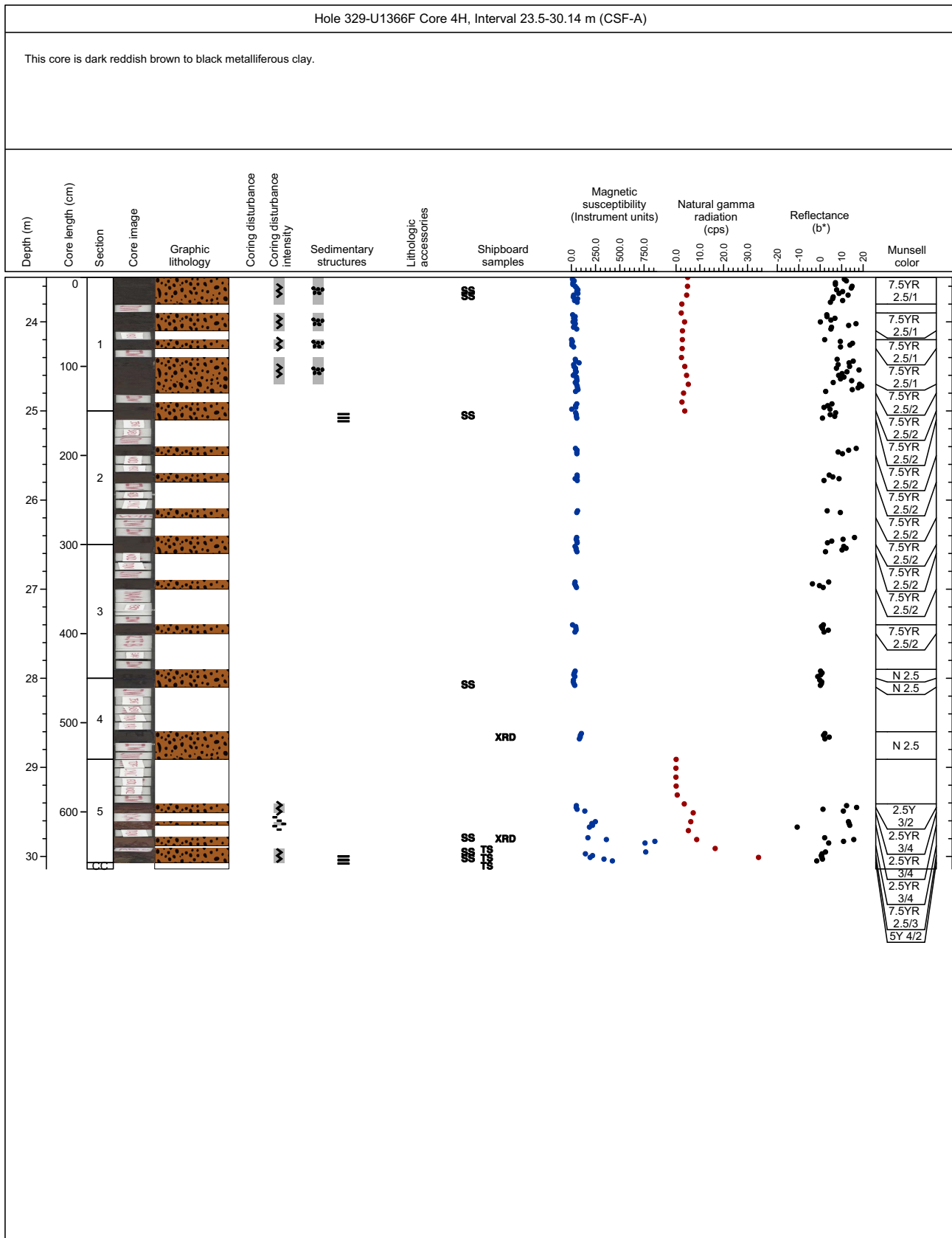
### Core Photo



# Core Photo



# Core Photo





Exp	Site	Hole	Core	Type	Section	Name	TopDepth	BotDepth	Clay	RSO	Zeolite	Opaque Minerals	Volcanic glass	Ichthyoliths	Foraminifera	Radiolaria
329	U1366	B	1	H	1	SED	0.9	1.1	28	36	36	0	0	0	0	0
329	U1366	B	1	H	4	SED	5.3	5.5	33	56	11	0	0	0	0	0
329	U1366	B	1	H	6	SED	7.33	7.53	30	50	20	0	0	0	0	0
329	U1366	B	2	H	1	SED	8.6	8.8	21	71	7	0	0	0	0	0
329	U1366	B	2	H	2	SED	9.6	9.8	17	83	0.1	0.1	0	0.1	0	0
329	U1366	B	2	H	2	SED	9.7	9.7	-	-	-	-	-	0.1	0	0
329	U1366	B	2	H	2	SED	10.1	10.3	17	42	33	0	8	0.1	0	0
329	U1366	B	2	H	2	SED	10.2	10.2	-	-	-	-	-	0.1	0	0
329	U1366	B	2	H	4	SED	12.48	12.68	13	38	38	0	13	0.1	0	0
329	U1366	B	2	H	4	SED	12.58	12.58	-	-	-	-	-	0.1	0	0
329	U1366	B	2	H	4	SED	12.7	12.9	13	13	44	0	31	0	0.1	0
329	U1366	B	2	H	4	SED	12.8	12.8	-	-	-	-	-	0	0.1	0
329	U1366	B	2	H	6	SED	15.28	15.48	40	20	20	0	0	0	0	20
329	U1366	B	2	H	6	SED	15.38	15.38	-	-	-	-	-	0	0	20
329	U1366	B	2	H	6	SED	15.75	15.95	20	33	47	0	0	0	0	0



Exp	Site	Hole	Core	Type	Section	Name	TopDepth	BotDepth	Clay	RSO	Zeolite	Feldspar	Volcanic glass	Radiolaria
329	U1366	C	1	H	2	A	2.4	2.6	23	38	39	0	0	0
329	U1366	C	2	H	1	A	6.65	6.85	23	69	8	0	0	0
329	U1366	C	2	H	2	A	8.15	8.35	27	63	9	0	0	0
329	U1366	C	2	H	3	A	9.65	9.85	20	80	0.1	0	0	0
329	U1366	C	2	H	4	A	11.15	11.35	33	67	0.1	0.1	0	0
329	U1366	C	2	H	5	A	12.65	12.85	22	56	22	0	0	0
329	U1366	C	2	H	7	A	15	15.2	38	38	23	0	0.1	0
329	U1366	C	3	H	1	A	16.02	16.22	13	37	0	0	0	50
329	U1366	C	3	H	1	A	16.12	16.12	-	-	-	-	-	50



Exp	Site	Hole	Core	Type	Section	Name	TopDepth	BotDepth	Clay	RSO	Zeolite	Volcanic glass	Quartz
329	U1366	D	1	H	2	SED	1.6	1.6	25	42	33	0	0
329	U1366	D	1	H	7	SED	8.75	8.75	16	42	42	0	0
329	U1366	D	2	H	1	SED	9.65	9.65	53	37	11	0.1	0
329	U1366	D	2	H	2	SED	11.15	11.15	62	31	6	0.1	0.1
329	U1366	D	2	H	3	SED20	12.65	12.65	20	80	0.1	0	0
329	U1366	D	2	H	4	SED21	14.15	14.15	26	37	26	11	0
329	U1366	D	2	H	6	SED22	17.2	17.2	8	54	38	0	0
329	U1366	D	2	H	7	SED23	18.45	18.45	0	0	0	0	100
329	U1366	D	2	H	7	SED24	18.52	18.52	31	19	19	0	31





Exp	Site	Hole	Core	Type	Section	Name	TopDepth	TD	BotDepth	BD	Clay	RSO	Zeolite	Quartz	Volcanic glass	Porcellanite	Radiolaria
329	U1366	F	1	H	2	A	2.6	2.7	2.8	2.7	28	36	36	0	0	0	0
329	U1366	F	2	H	2	A	8.2	8.3	8.4	8.3	43	43	13	0.1	0	0	0
329	U1366	F	2	H	3	A	9.7	9.8	9.9	9.8	42	42	16	0.1	0.1	0	0
329	U1366	F	2	H	4	A	11.2	11.3	11.4	11.3	42	56	3	0.1	0	0	0
329	U1366	F	2	H	5	A	12.7	12.8	12.9	12.8	20	40	40	0.1	0	0	0
329	U1366	F	3	H	1	A	14.33	14.43	14.53	14.43	23	77	0	0	0	0	0
329	U1366	F	3	H	1	A	15.03	15.13	15.23	15.13	0	9	0	0	8	83	0
329	U1366	F	3	H	2	A	16.03	16.13	16.23	16.13	12	59	0	0	0	0	29
329	U1366	F	3	H	2	A	16.1	16.2	16.3	16.2	15	77	8	0	0	0	0
329	U1366	F	3	H	2	A	16.13	16.13	-	-	-	-	-	-	-	-	29
329	U1366	F	3	H	4	A	18.85	18.95	19.05	18.95	68	32	0	0	0	0	0
329	U1366	F	3	H	4	A	19.4	19.5	19.6	19.5	0	0	0	0	0	100	0
329	U1366	F	3	H	6	A	21.5	21.6	21.7	21.6	34	66	0	0	0	0	0
329	U1366	F	3	H	6	A	22.5	22.6	22.7	22.6	6	94	0	0	0	0	0
329	U1366	F	4	H	1	A	23.55	23.65	23.75	23.65	0	100	0	0	0.1	0	0
329	U1366	F	4	H	1	A	23.61	23.71	23.81	23.71	0	100	0	0	0.1	0	0
329	U1366	F	4	H	2	A	24.95	25.05	25.15	25.05	13	87	0	0	0.1	0	0
329	U1366	F	4	H	4	A	27.97	28.07	28.17	28.07	13	87	0	0	0	0	0
329	U1366	F	4	H	5	A	29.69	29.79	29.89	29.79	0	100	0	0	0	0	0
329	U1366	F	4	H	5	A	29.85	29.95	30.05	29.95	18	64	0	18	0	0	0
329	U1366	F	4	H	5	A	29.92	30.02	30.12	30.02	0	0	0	100	0	0	0



**Thin section:** 329-U1366F-4H-5-TS\_39  
**Depth CSF-A (m):** 29.88-29.96  
**Rock name:** sparsely phyric basalt  
**Grain size:** cryptocrystalline  
**Texture:** spherulitic  
**Where sampled:**

Primary mineralogy	Percent present	Percent original	Size			Shape	Comments
			min	max	mode		
<b>Phenocrysts</b>							
Plagioclase	0.5	2	0.04			lath	

**Groundmass/matrix**  
 Plagioclase the cryptocrystalline groundmass is totally altered

Secondary mineralogy	Percent	Size			Replacing/ filling	Comments
		min	max	mode		
Saponite	5					
FeOx	4					

Vesicles	Modal	Shape	max	min	mode	Fill percent	Comments

Veins	Shape	Generation	Avg. thickness (mm)		Infilling	Comments
			min	max		
VN1	branched		0.2		carbonates	
VN2	planar		0.1		silicates	
VN3	planar		0.1		silicates	

**Comments:** Highly altered cryptocrystalline basalt and basalt glass



**Thin section:** 329-U1366F-4H-5-W 110/111-TS\_38  
**Depth CSF-A (m):** 30.01-30.02  
**Rock name:** not known basalt  
**Grain size:** microcrystalline  
**Texture:** subophitic?  
**Where sampled:** Within sediment basement interface

Primary mineralogy	Percent present	Percent original	Size			Shape	Comments
			min	max	mode		
<b>Phenocrysts</b>							
Plagioclase		<0.1					obliterated - only 1 corroded plagioclase found
<b>Groundmass/matrix</b>							
Plagioclase	65	5	0.02	0.3	0.1	bladed	skeletal and remnant structure only remains, proportions of plagioclase are highly speculative.
Pyroxene	35?	0.1				anhedral	totally altered, only a few globular veins remain.
Opagues	2	0.1		0.2	0.1	irregular	probably all altered to titanomagnetite.

Secondary mineralogy	Percent	min	max	mode	Replacing/filling	Comments
Saponite	80?					total alteration of groundmass - saponite not confirmed (possibly iddingsite)
FeOx	10					

Vesicles	Modal	Shape	max	min	mode	Fill percent	Comments
V1							alteration is total, no vesicles preserved

Veins	Shape	Generation	Avg. thickness (mm)	Infilling	Comments
VN1					No veins present - section is composed of rubble

**Comments:** Totally obliterated basaltic groundmass, Internal structure is not preserved, only small 0.1 to 2 mm flakes of weathered clay of basaltic origin are present. Remnant plagioclase and some pyroxenes are preserved. Clay minerals (Saponite or iddingsite) grew along crystal planes leaving behind skeletal structure.



**Thin section:** 329-U1366F-4H-CC-TS\_36  
**Depth CSF-A (m):** 30.07-30.14  
**Rock name:** sparsely phyric basalt  
**Grain size:** cryptocrystalline  
**Texture:** spinifex  
**Where sampled:**

Primary mineralogy	Percent present	Percent original	Size			Shape	Comments
			min	max	mode		
<b>Phenocrysts</b>							
Plagioclase	2	6	0.1			lath	only remaining primary mineralogy is the plagioclase phenocrysts
Pyroxene	<0.1			0.15		irregular	
<b>Groundmass/matrix</b>							
Plagioclase							groundmass are all altered, no clear evidence for any mineral

Secondary mineralogy	Percent	Size			Replacing/ filling	Comments
		min	max	mode		
Saponite	8					saponite and FeO replaced the groundmass
FeOx	2					

Vesicles	Modal	Shape	max	min	mode	Fill percent	Comments
V1	1	rounded	0.6	0.05	0.1	5	vesicles are not entirely filled, Fe-ox phase may occur alone or secondary to
V2	1	rounded	0.6	0.05	0.1	30	vesicles are not entirely filled

Veins	Shape	Generation	Avg. thickness (mm)	Infilling	Comments
VN1	irregular		0.1	Fe-ox	

**Comments:** highly pervasively altered basalt, only little plagioclase exist, no olivine and only trace of pyroxene