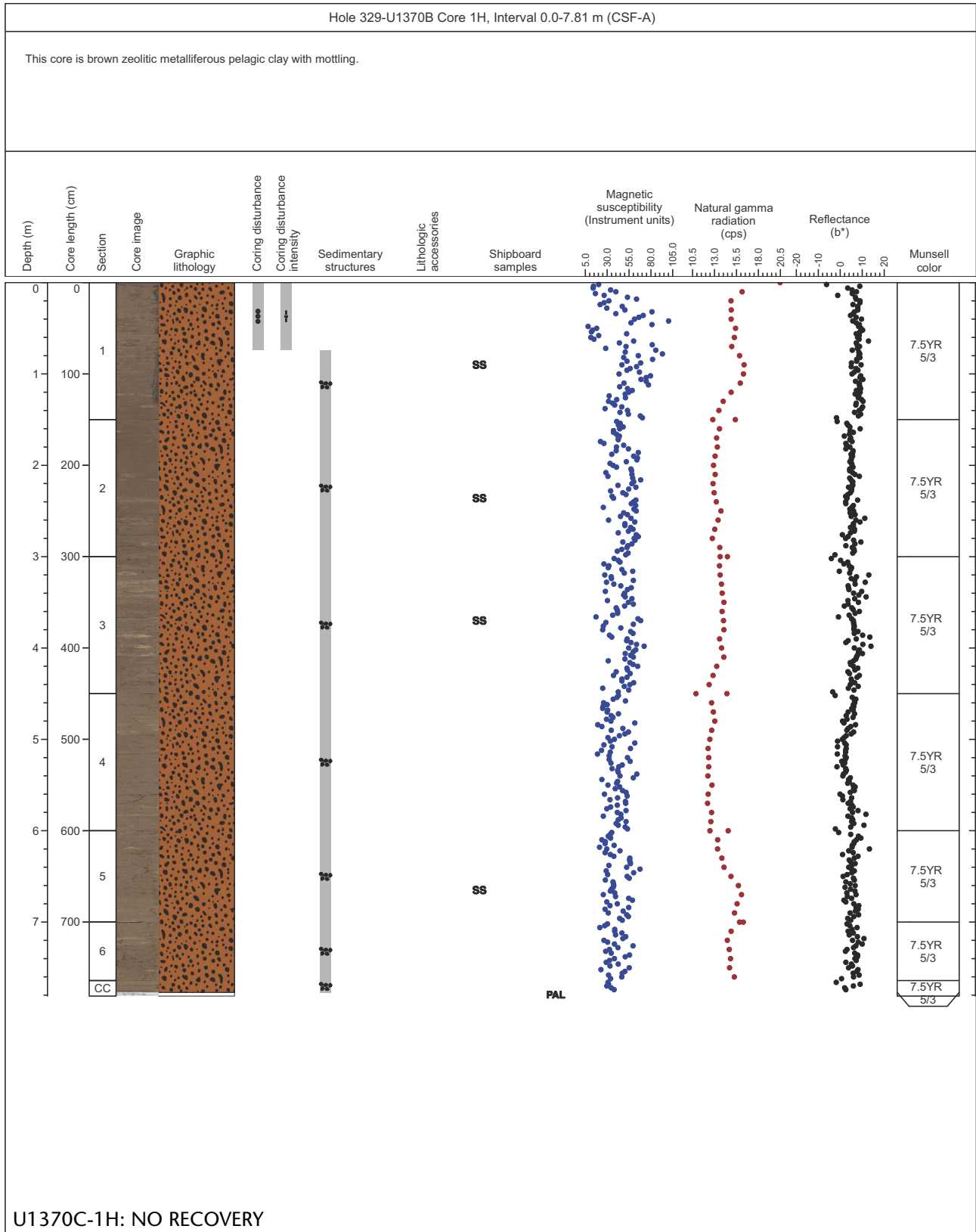
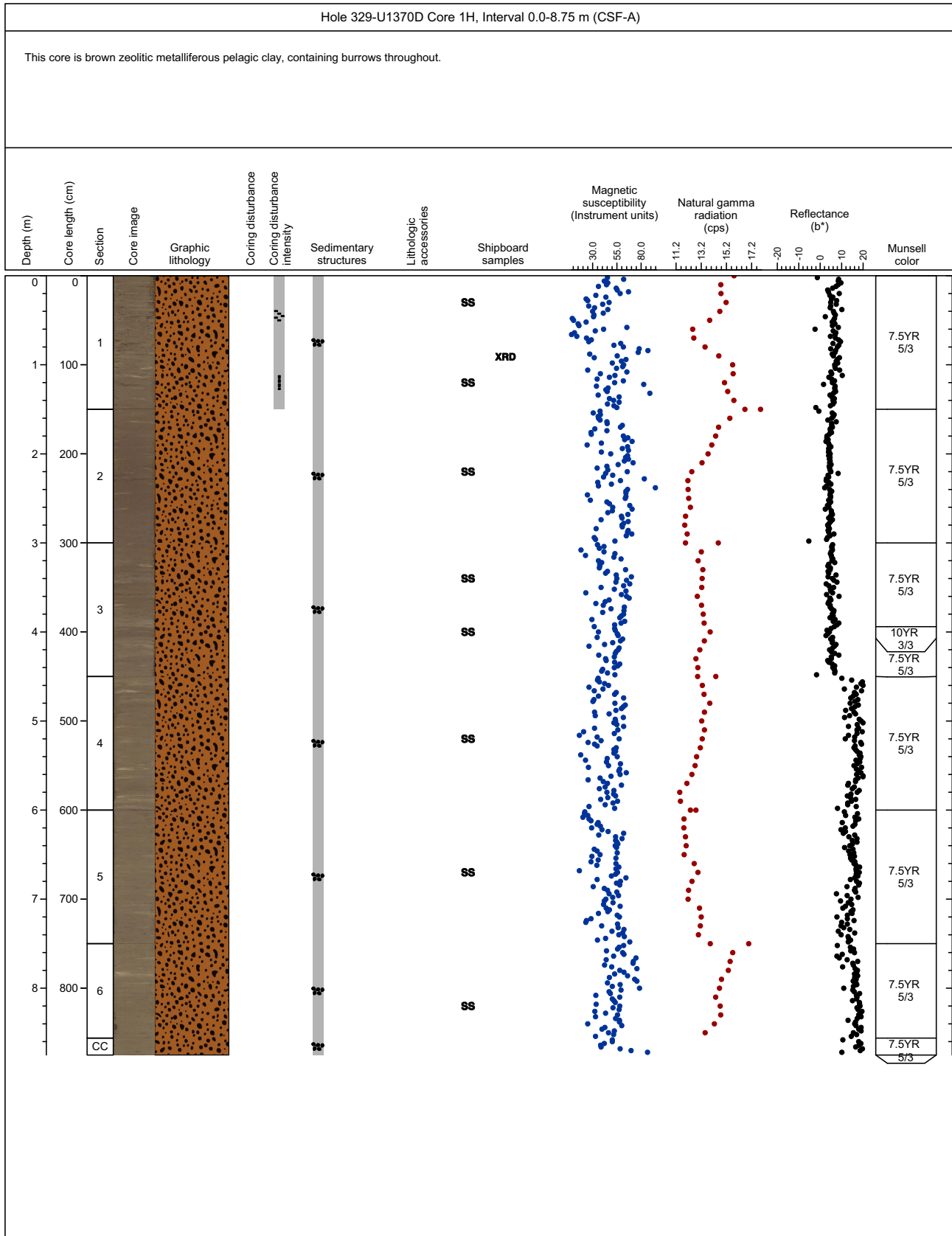


Core Photo

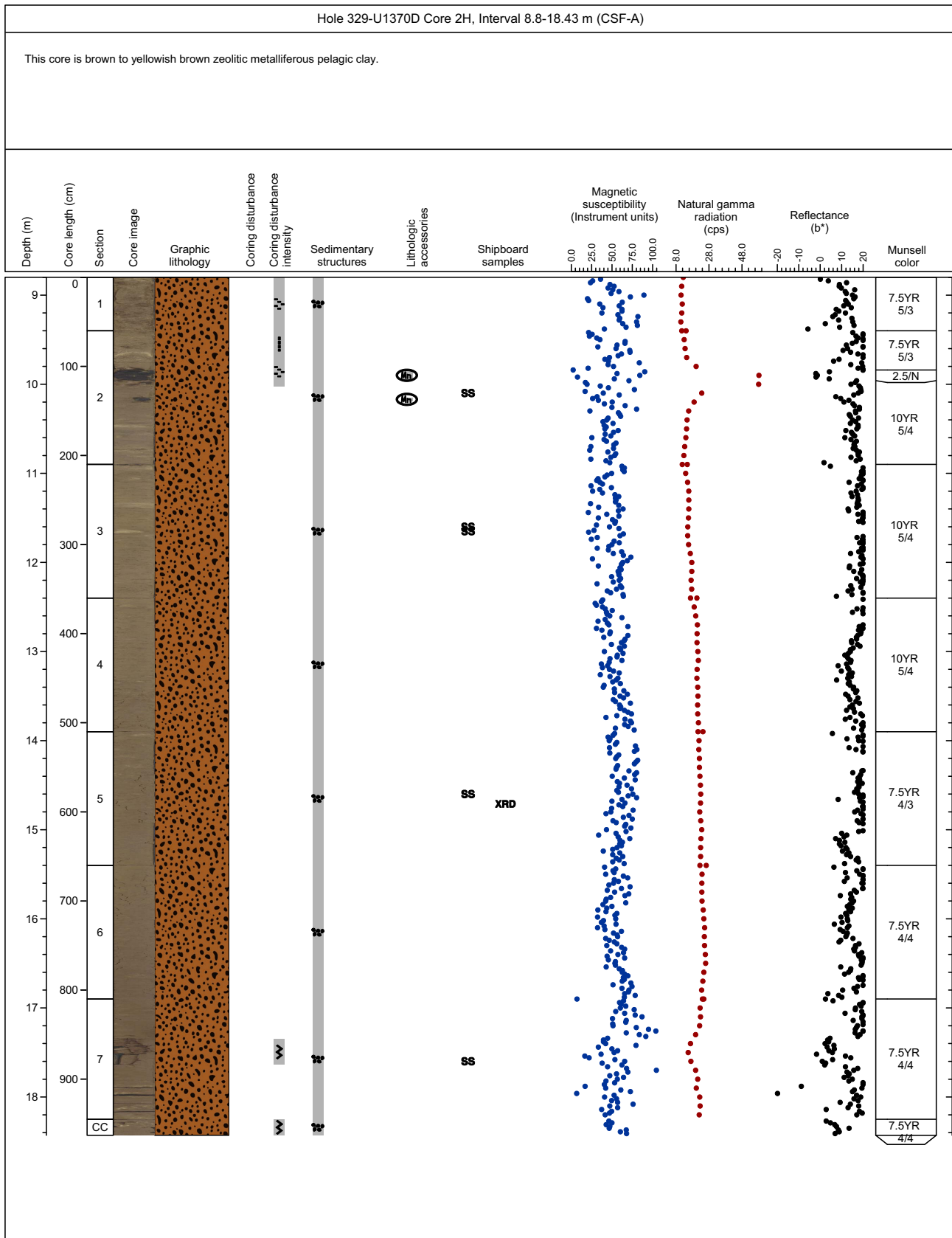
U1370A-1H: NO RECOVERY



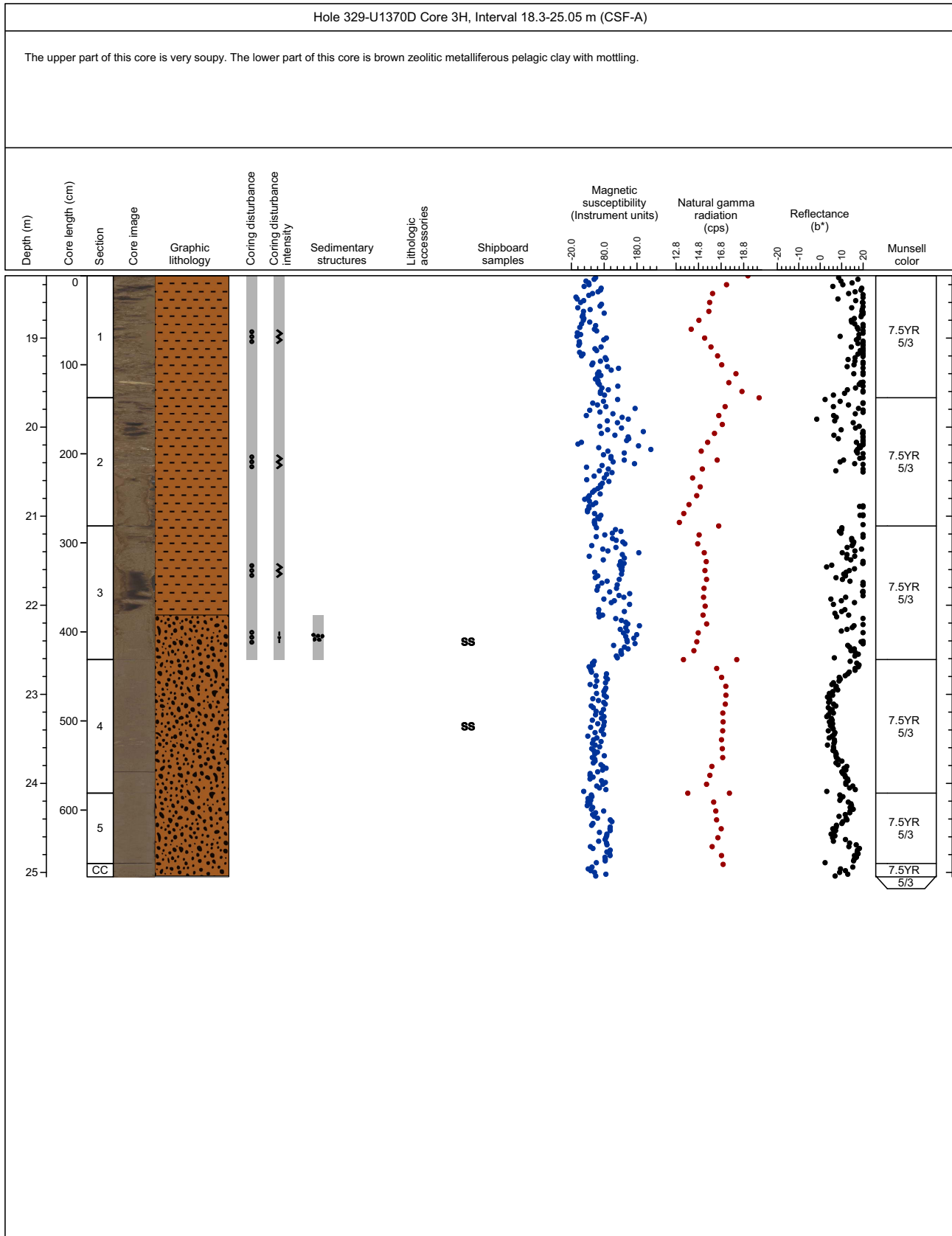
Core Photo



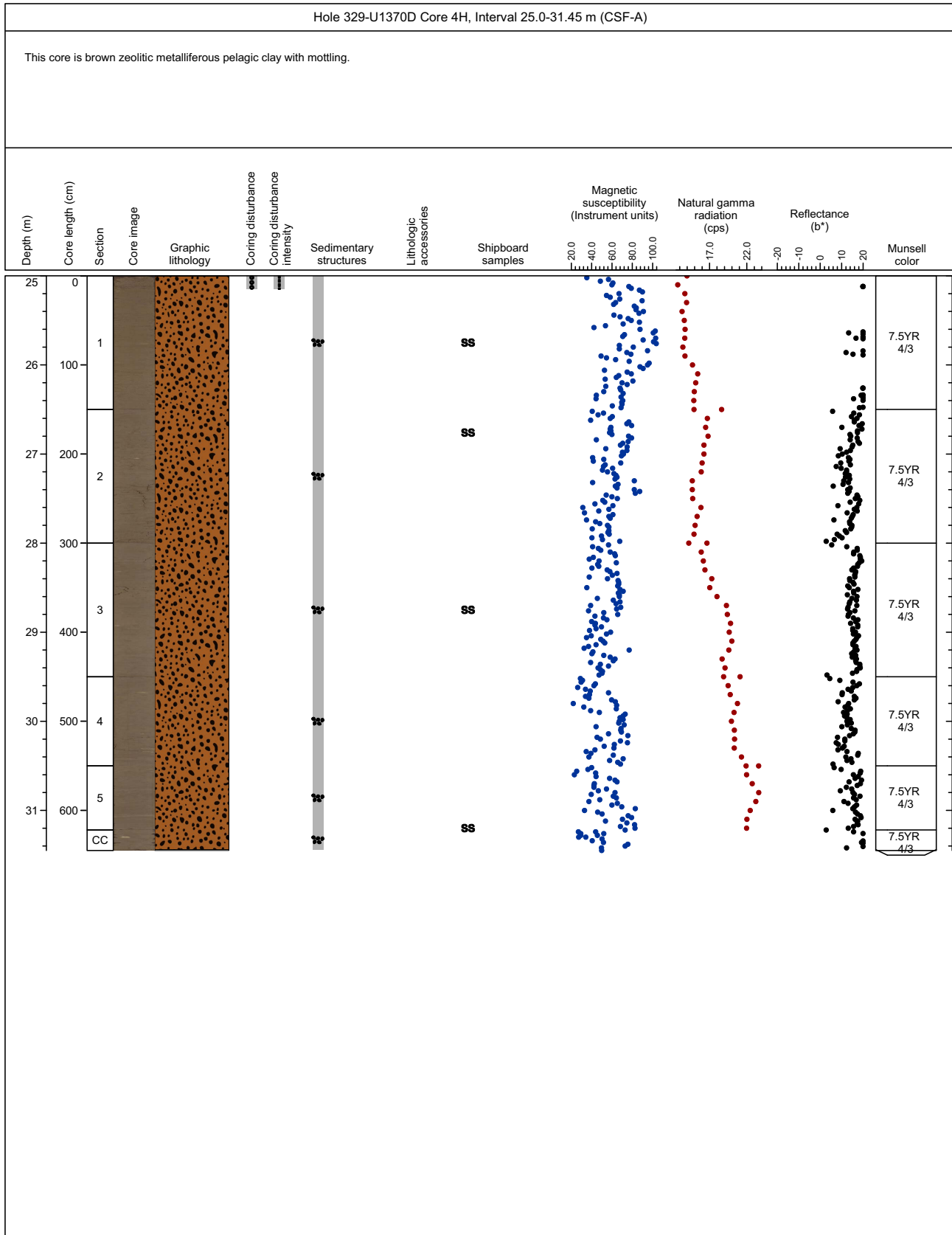
Core Photo



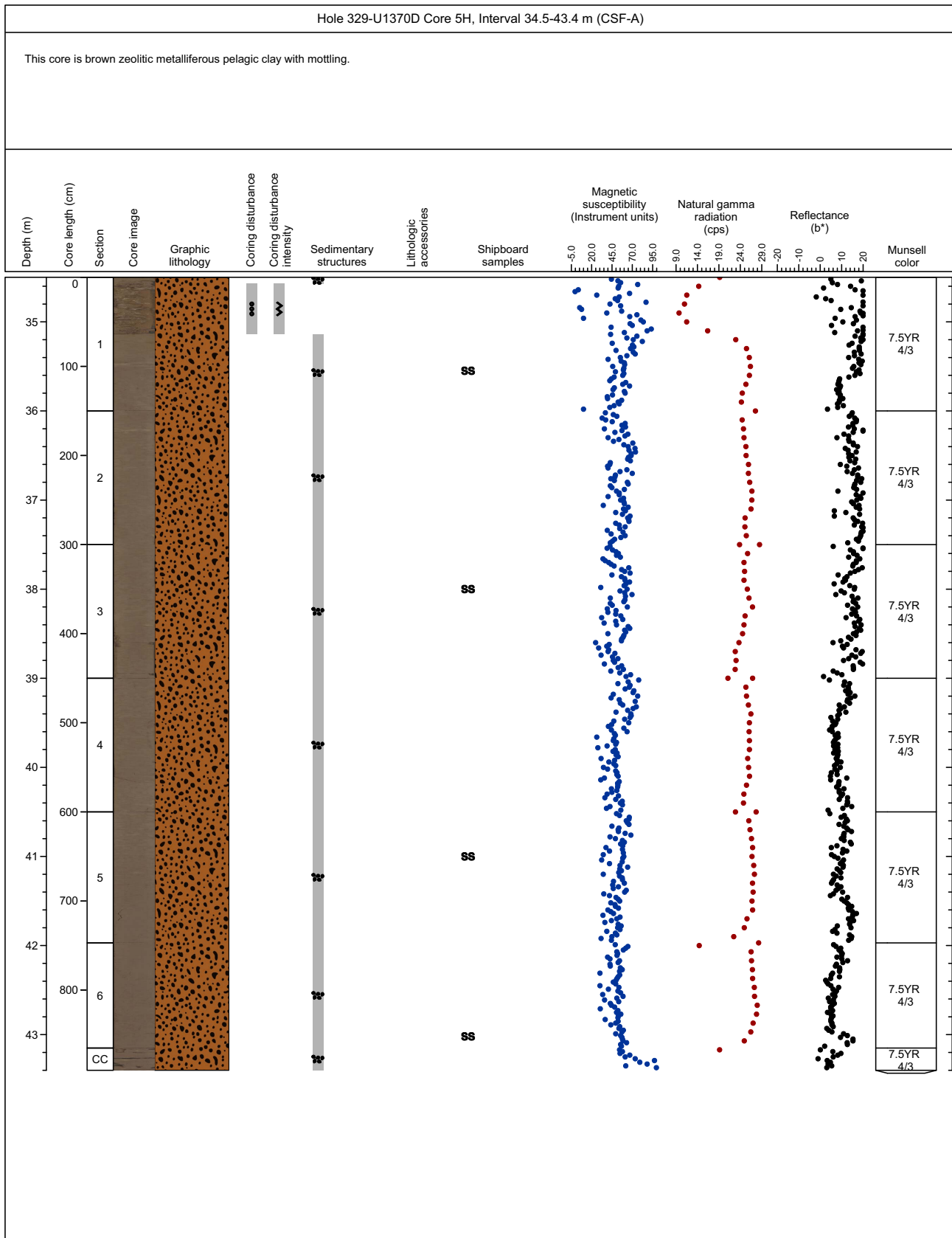
Core Photo



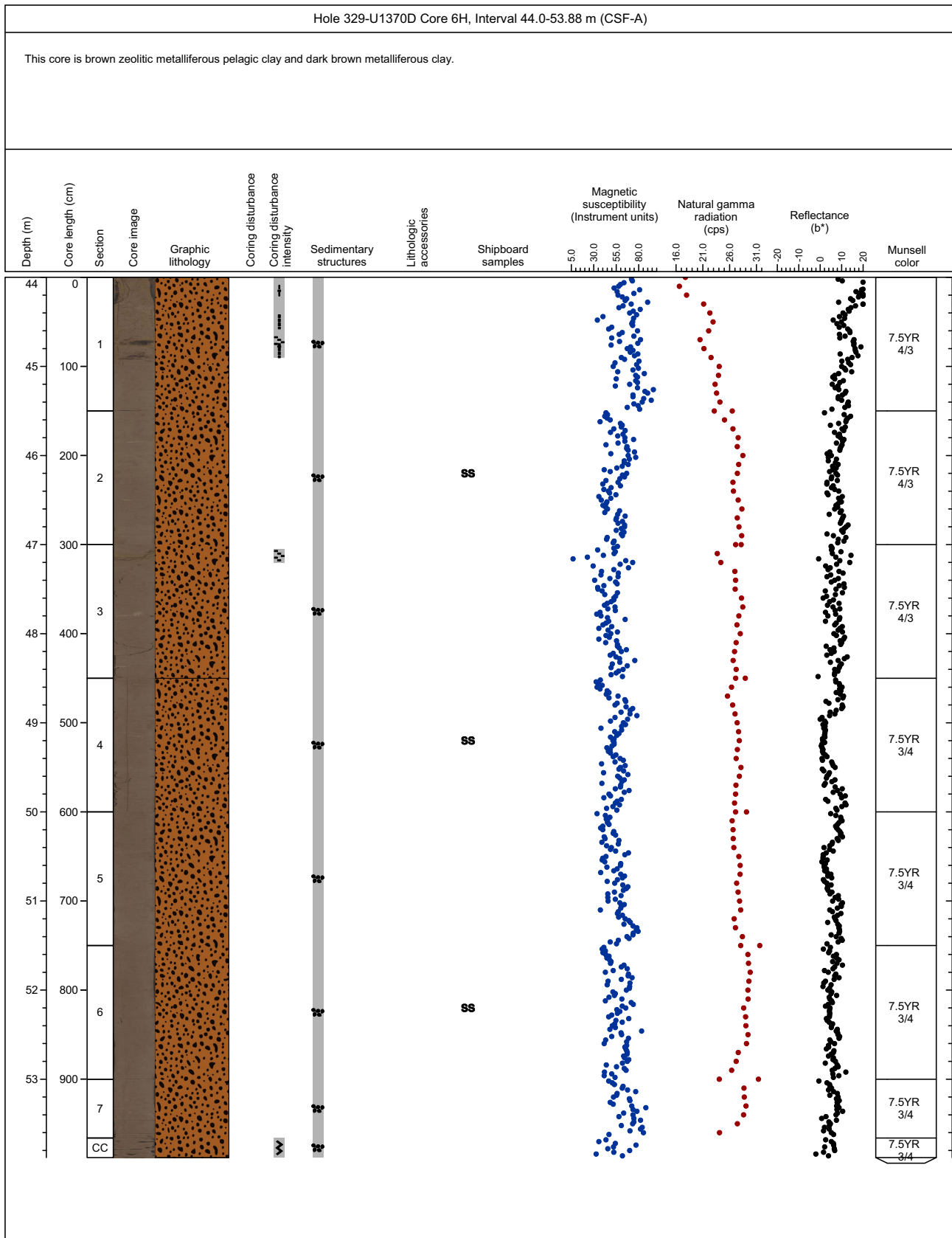
Core Photo



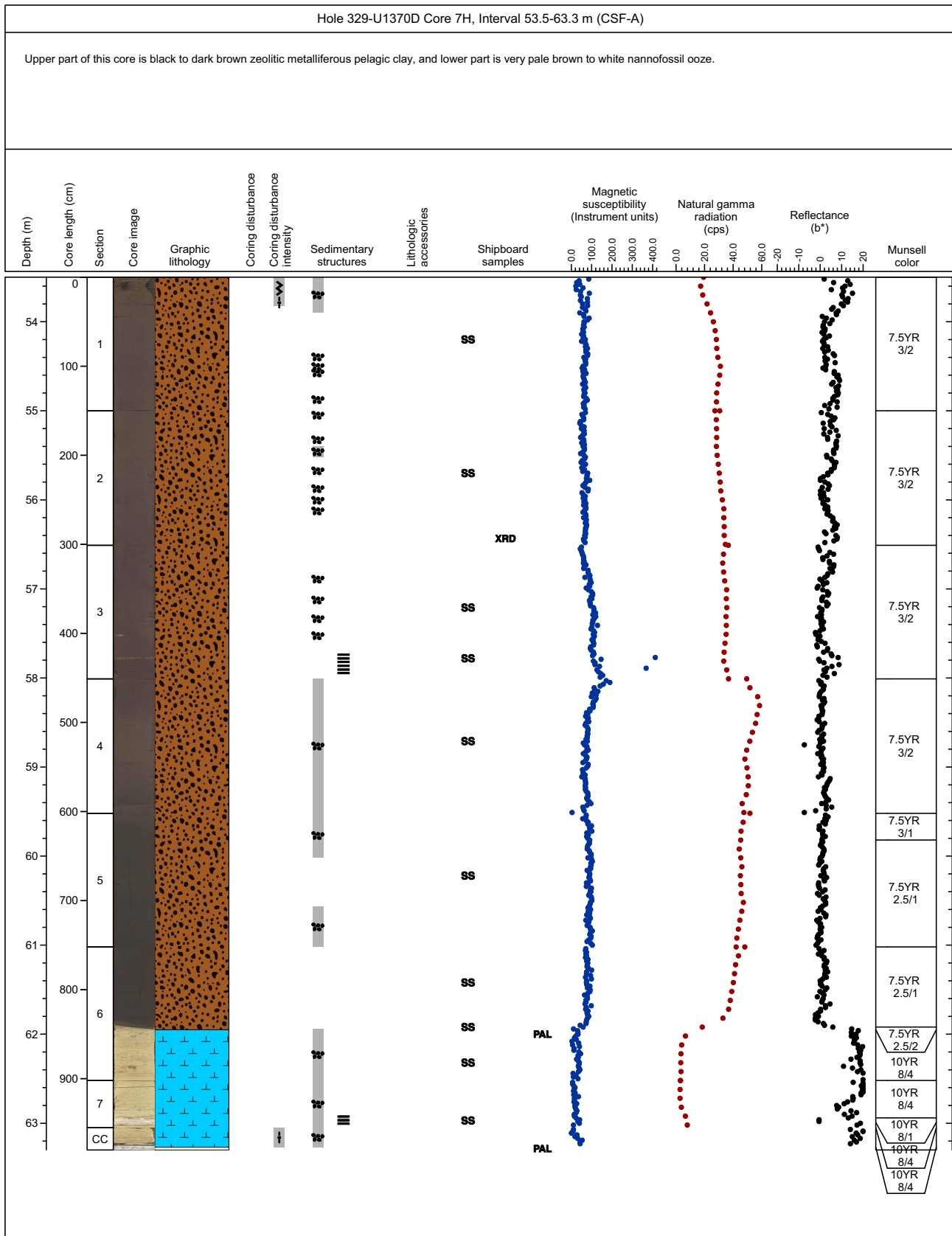
Core Photo



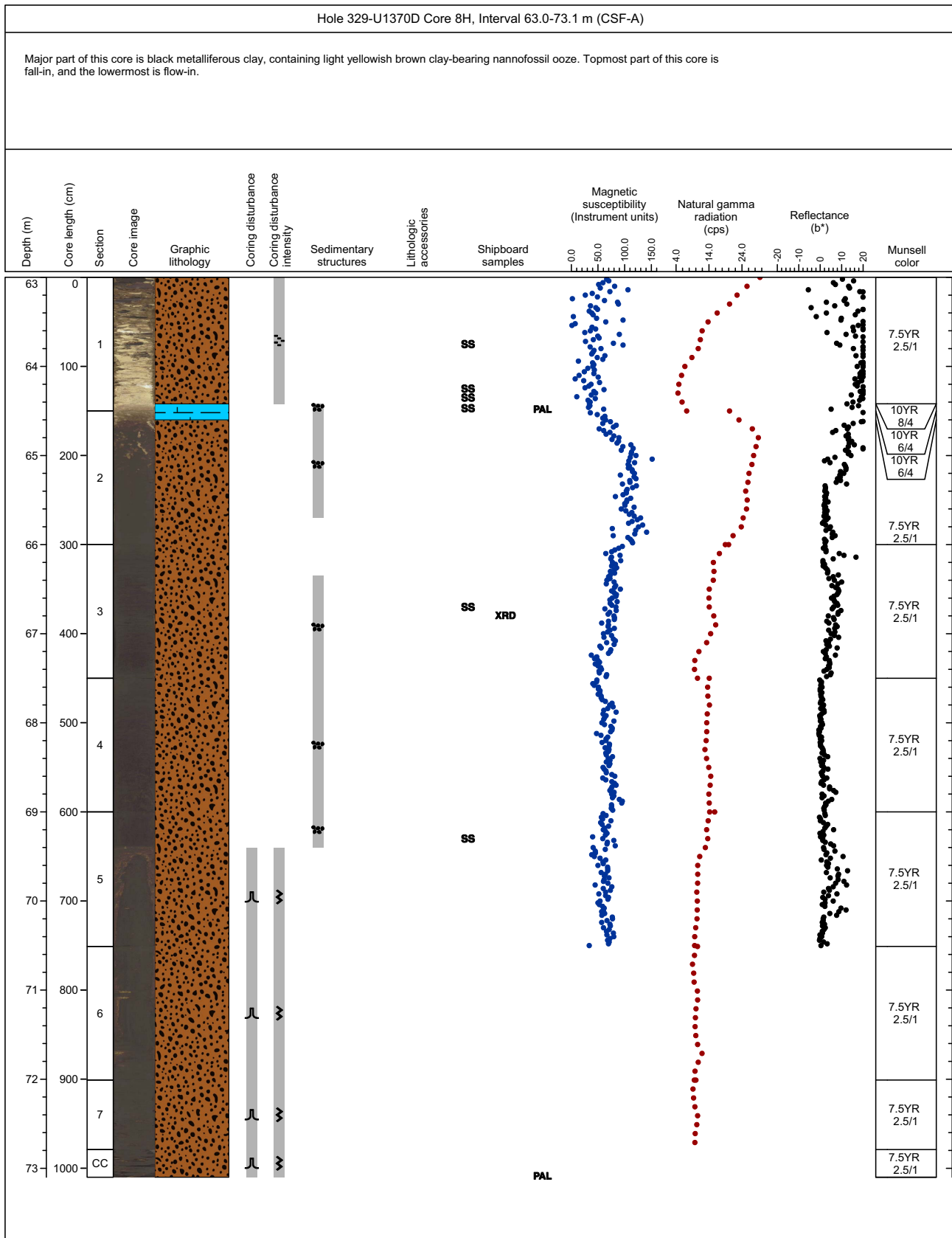
Core Photo



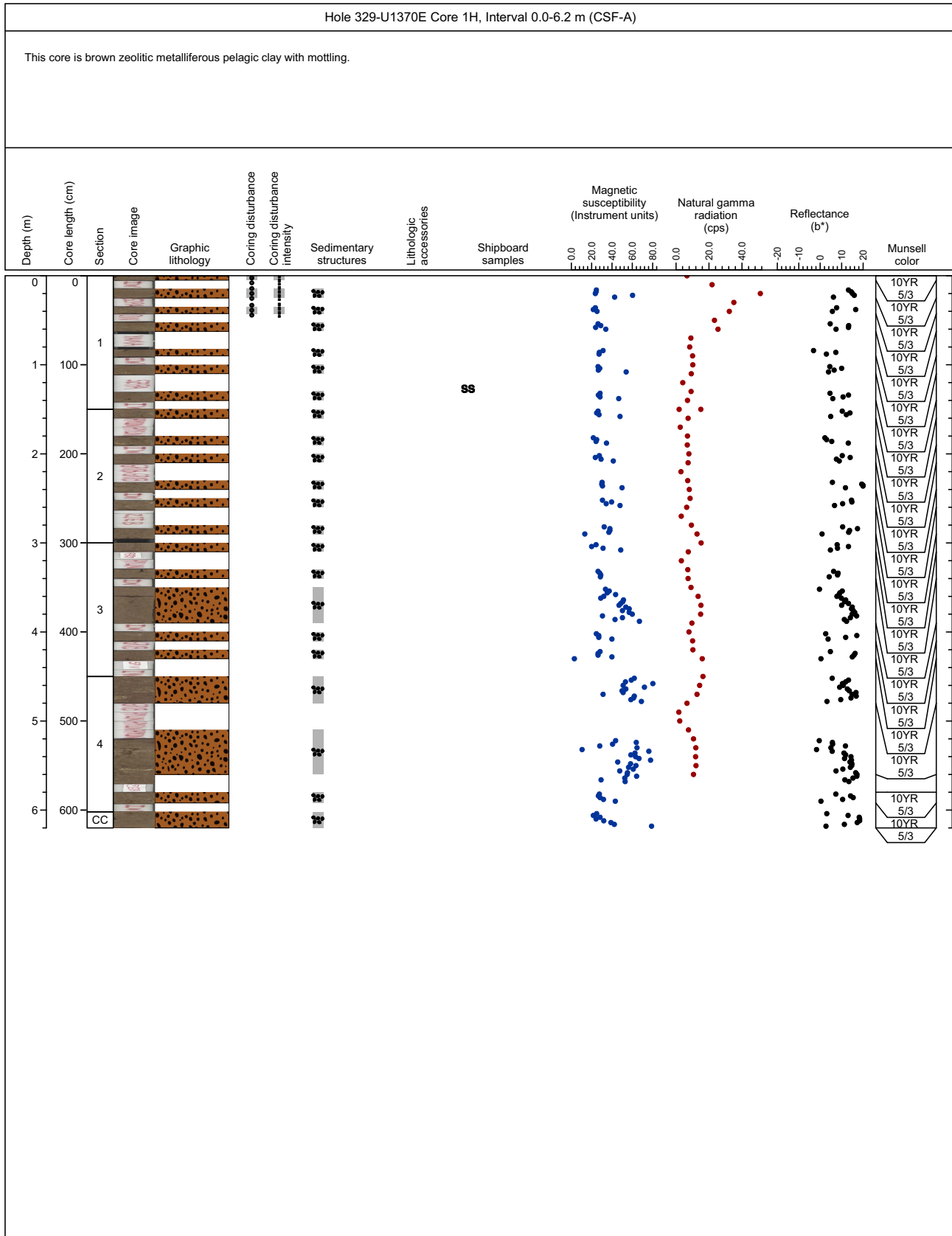
Core Photo



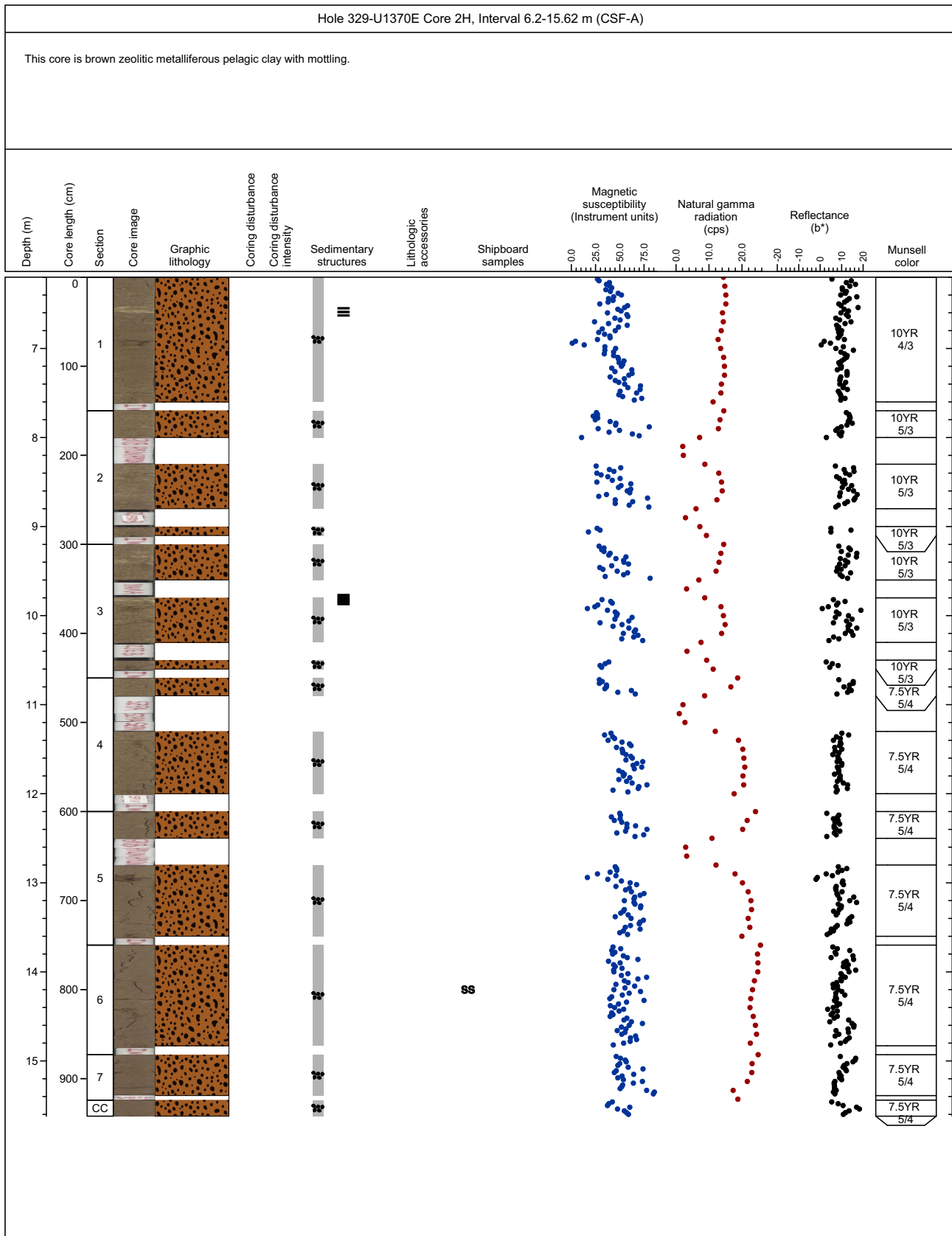
Core Photo



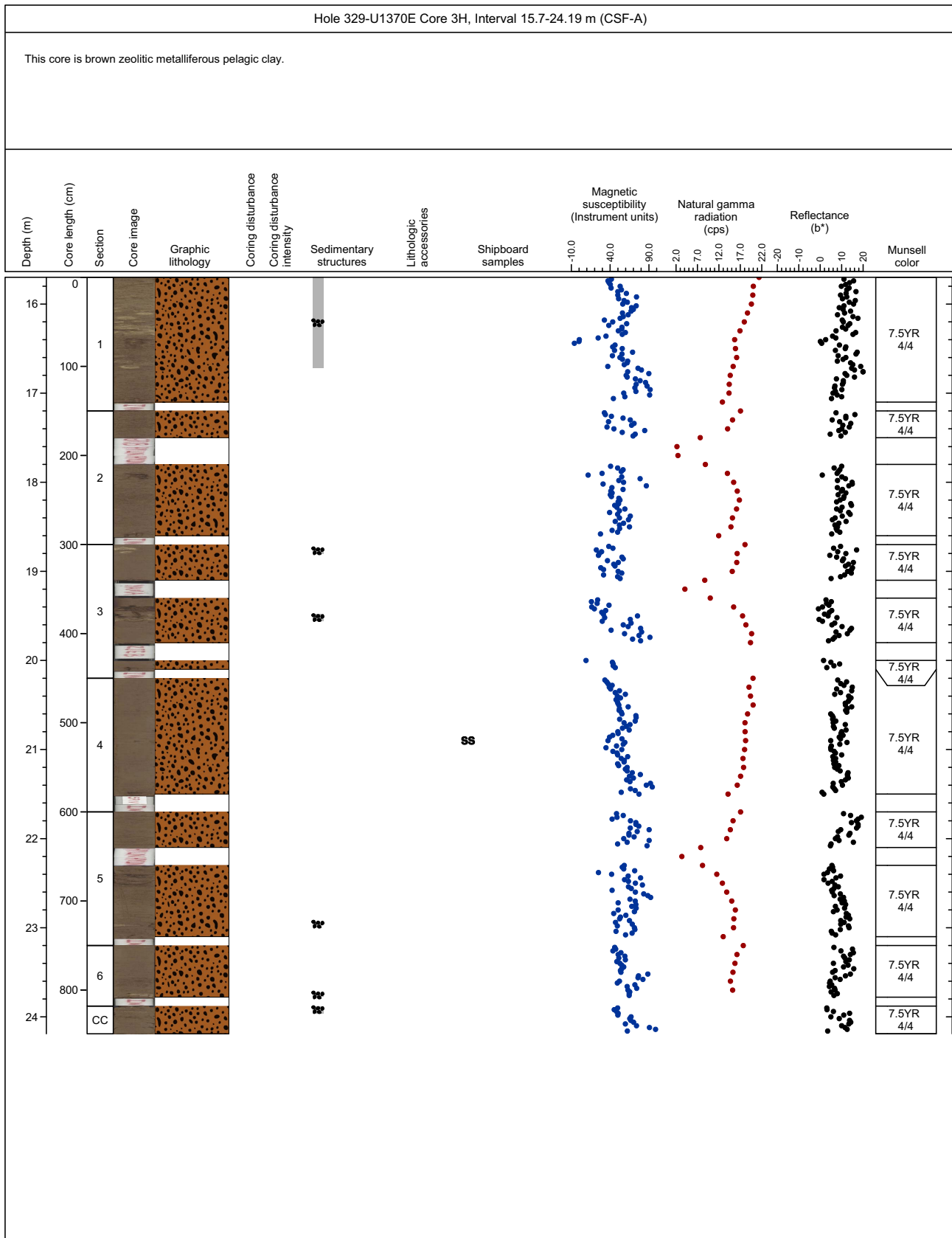
Core Photo



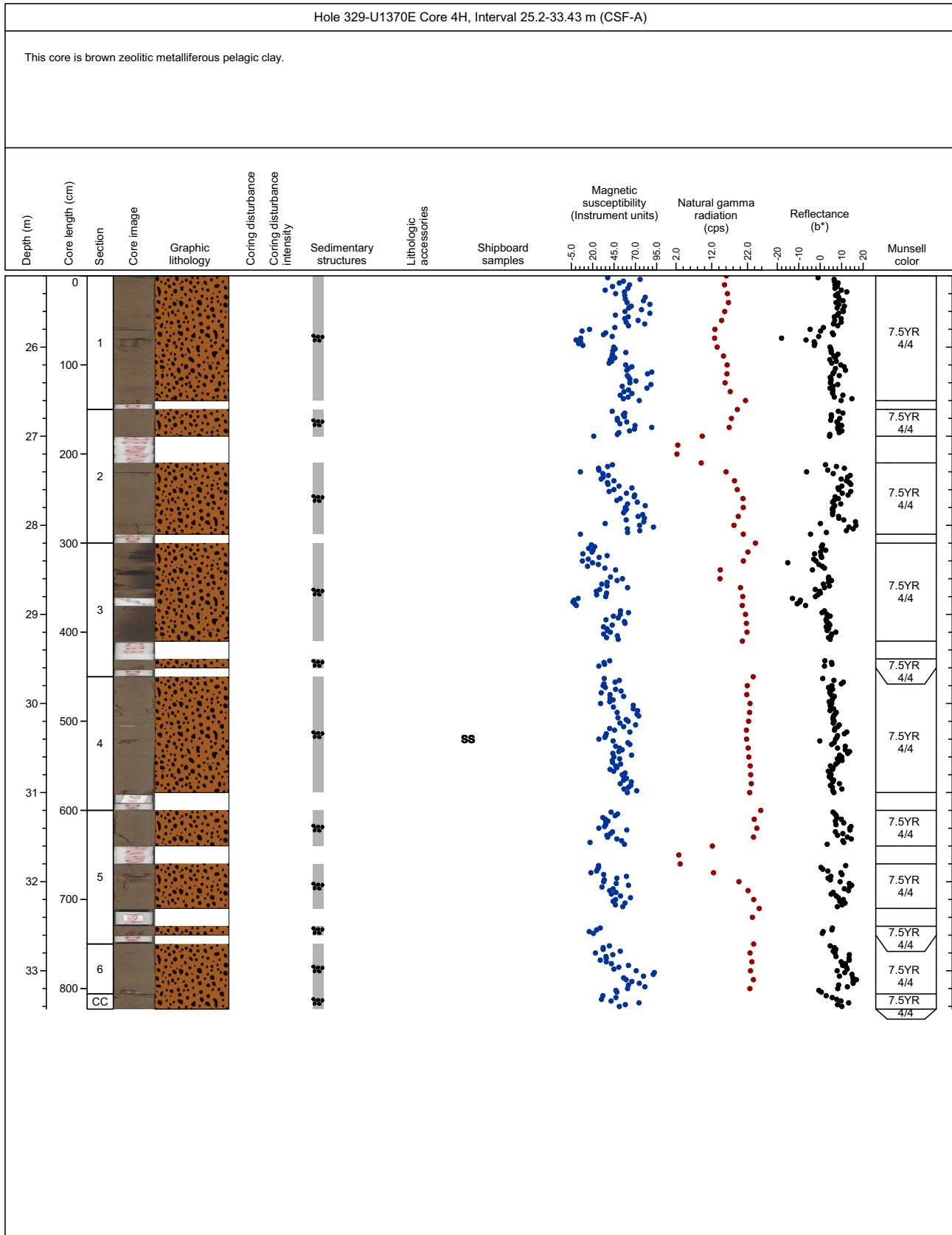
Core Photo



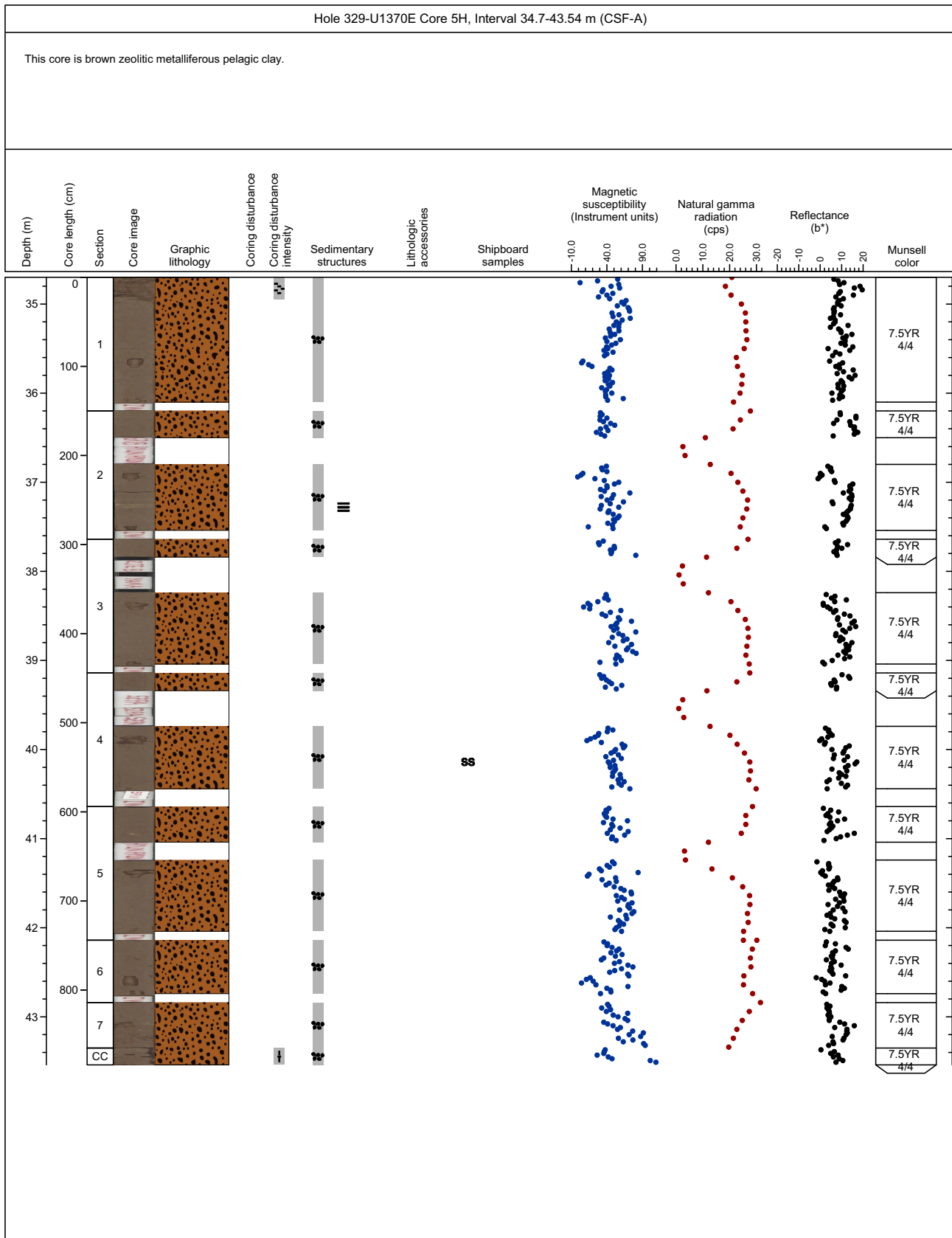
Core Photo



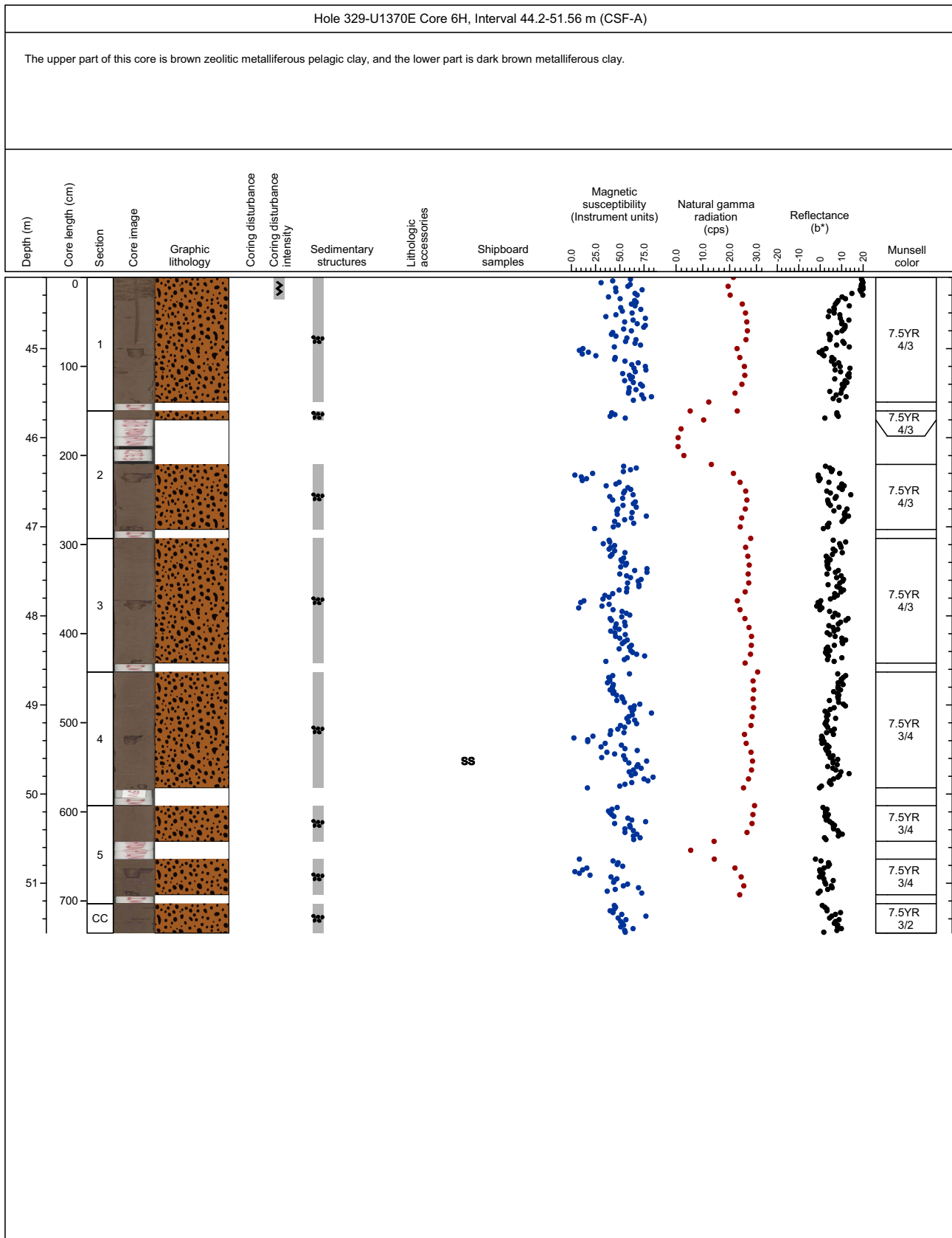
Core Photo



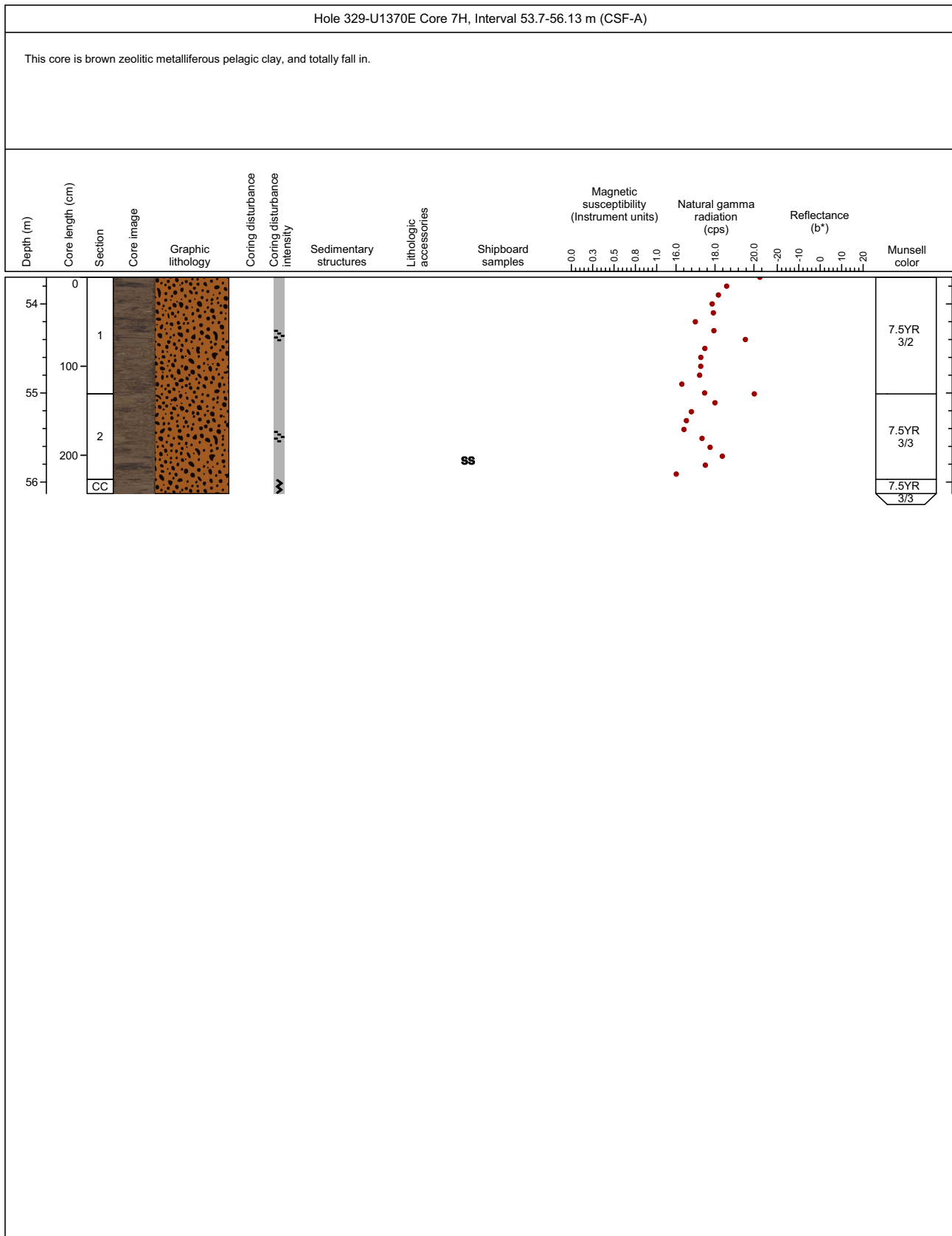
Core Photo



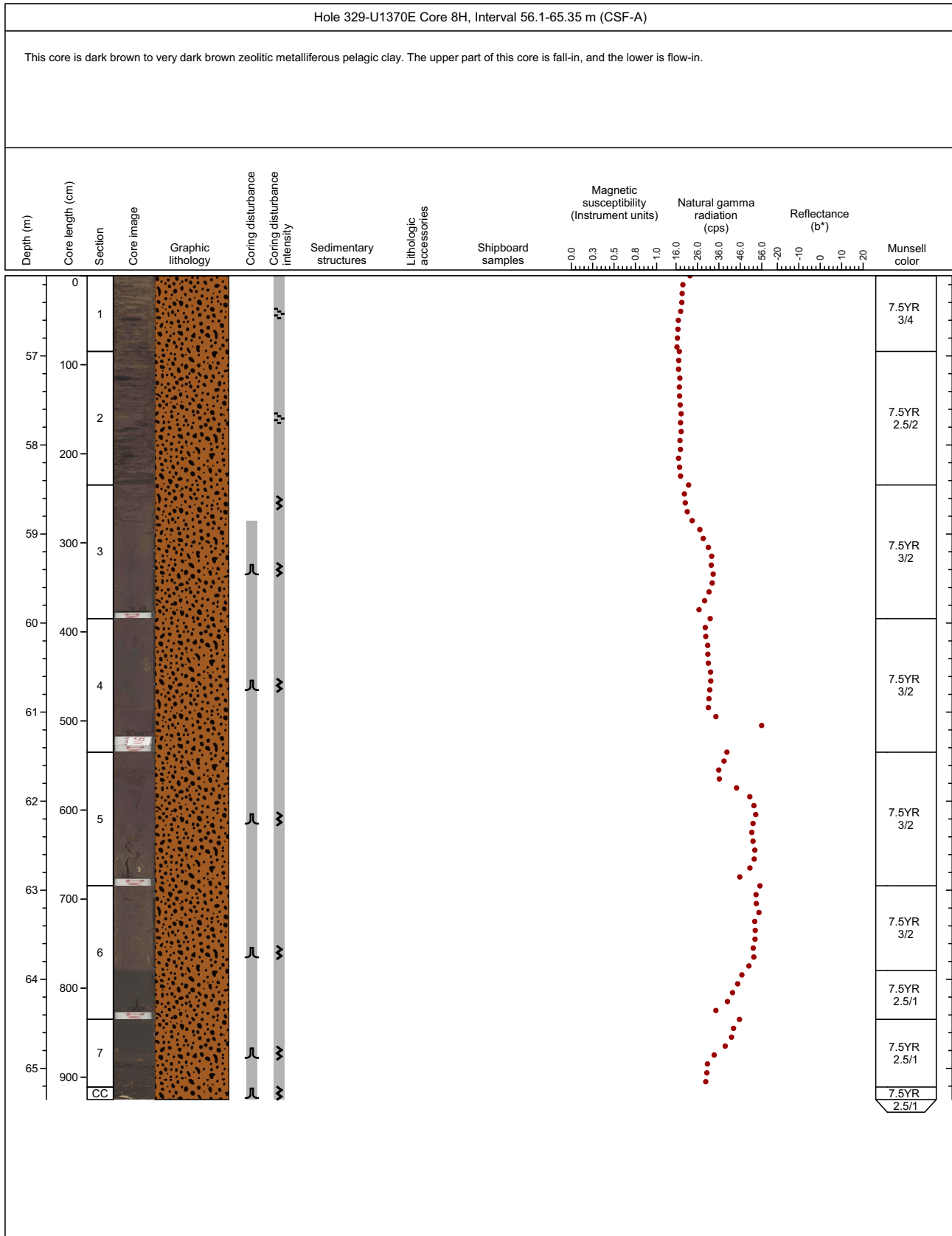
Core Photo



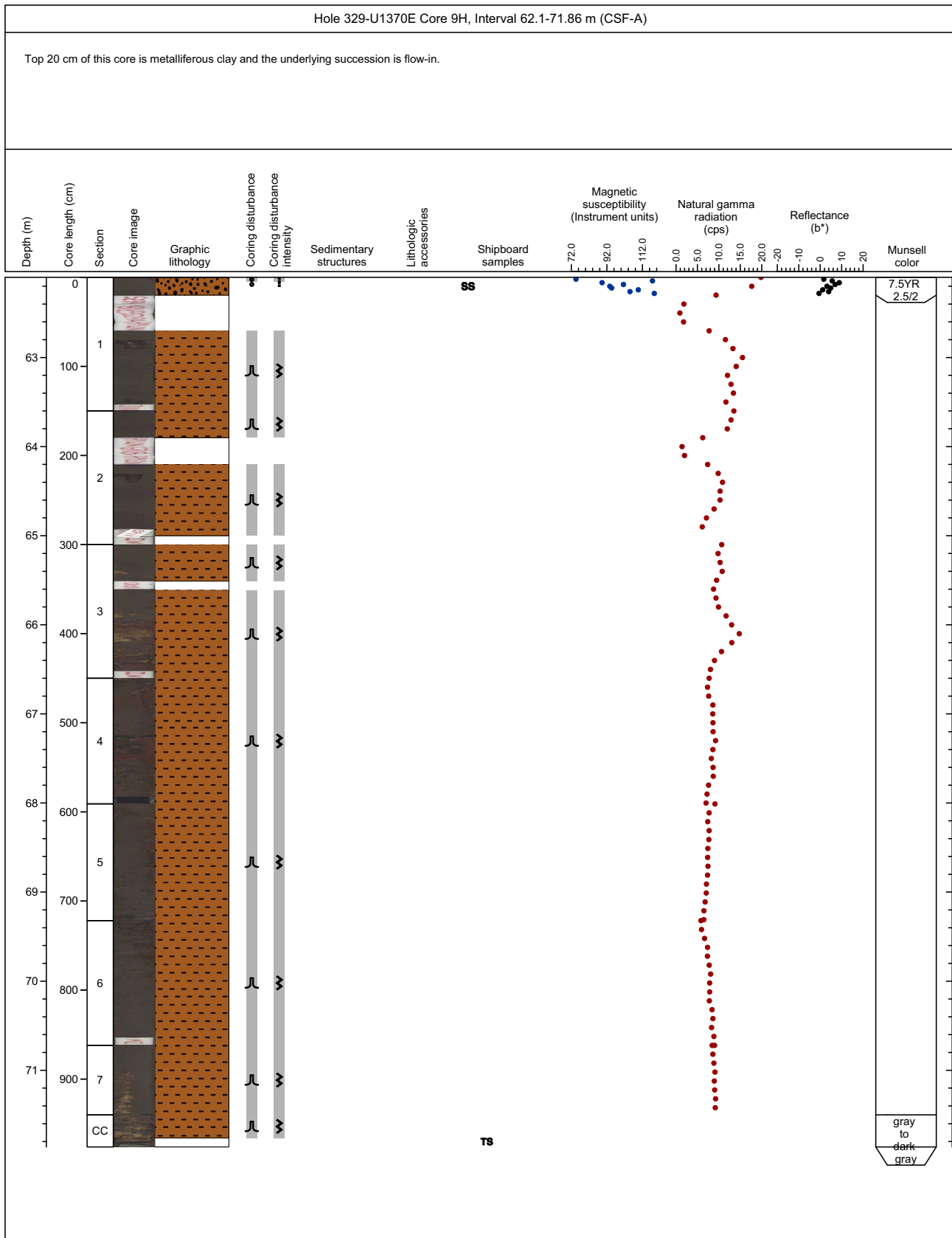
Core Photo



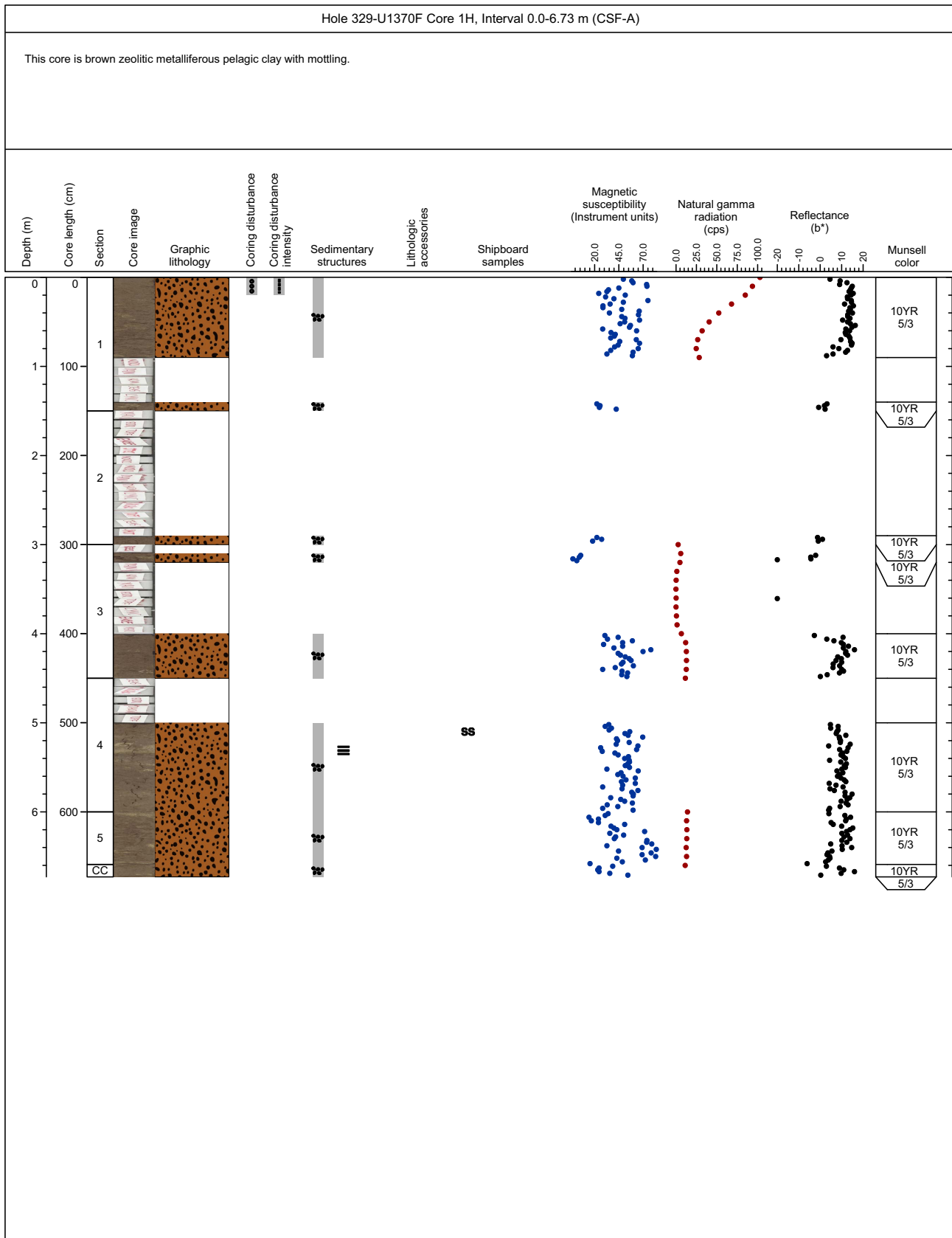
Core Photo



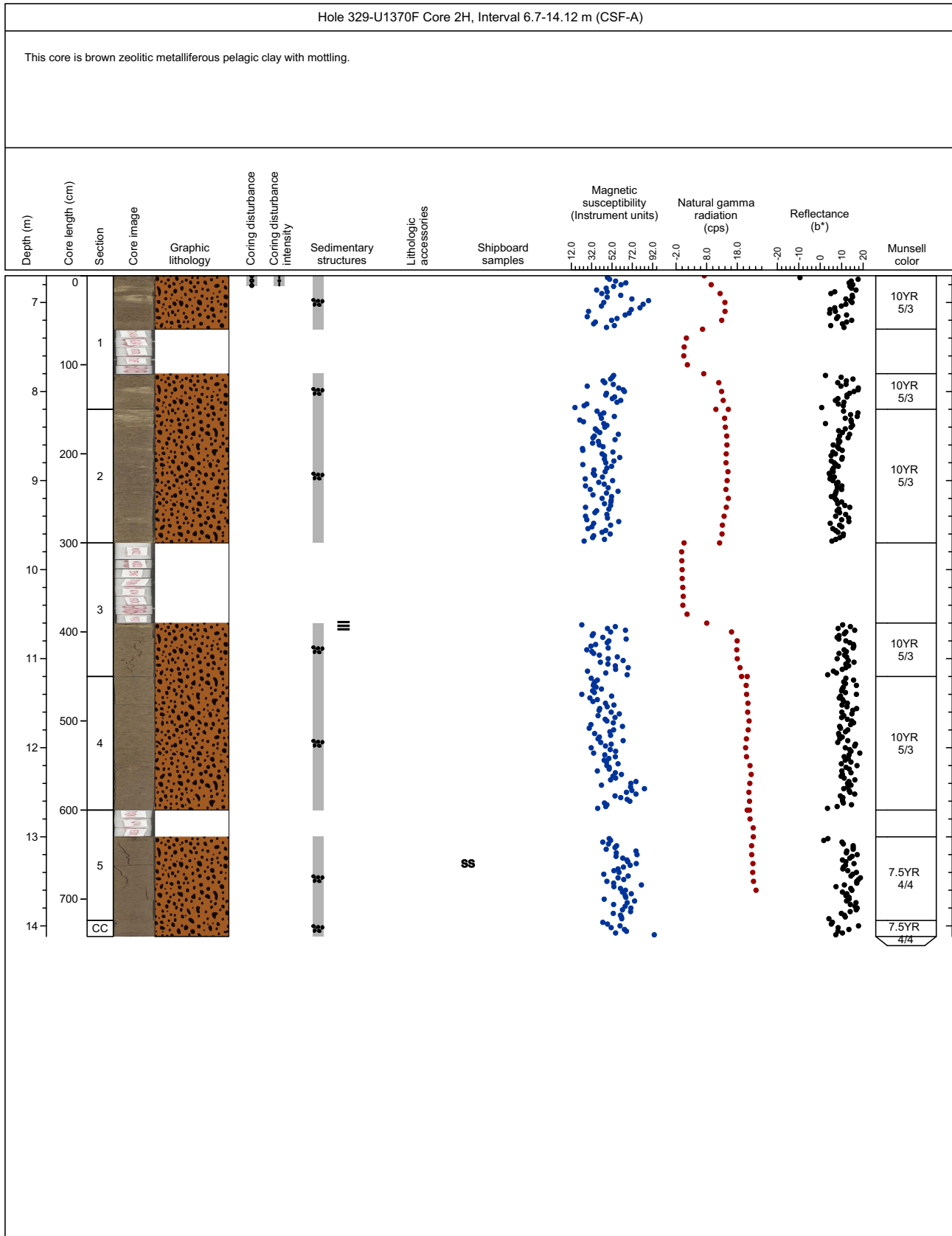
Core Photo



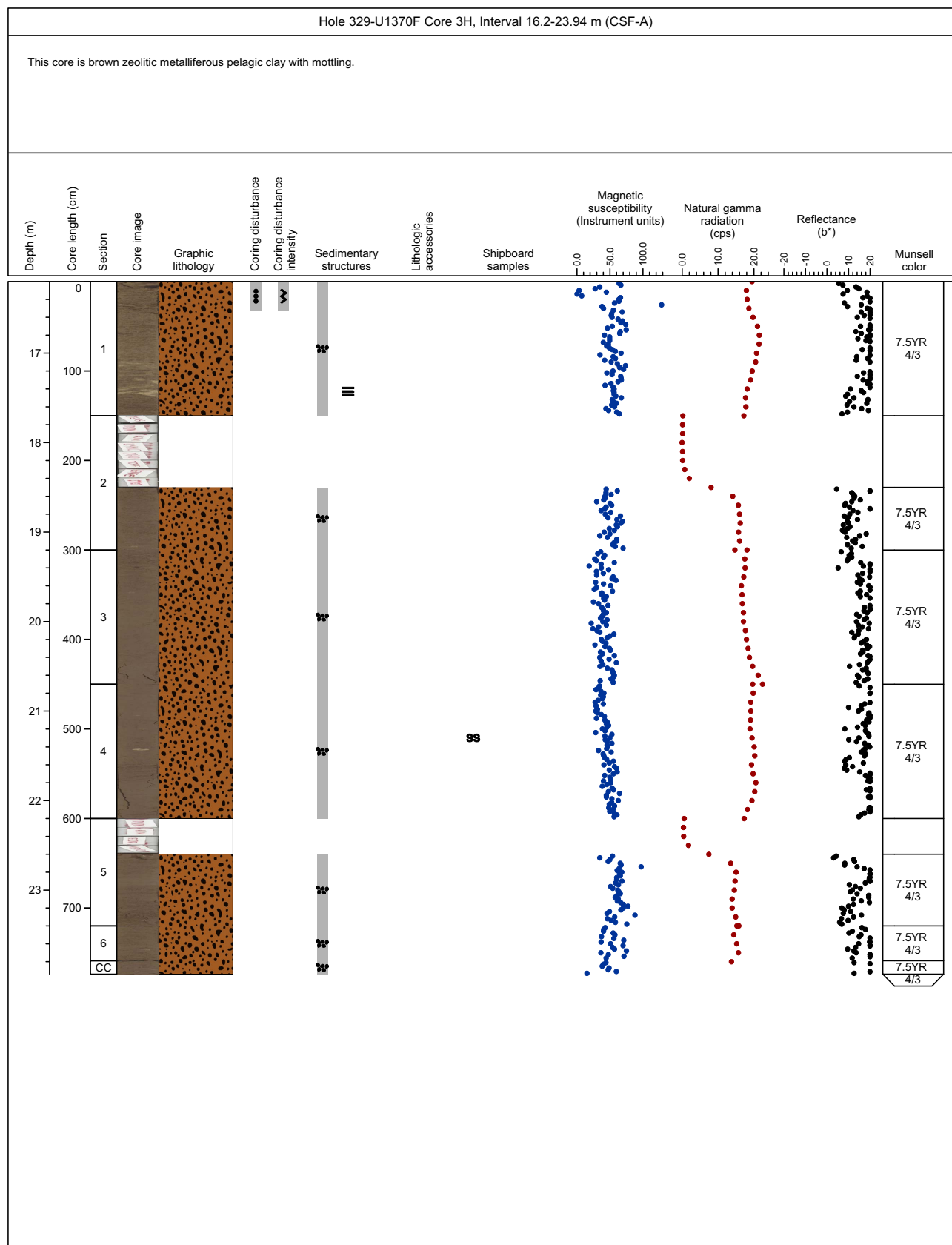
Core Photo



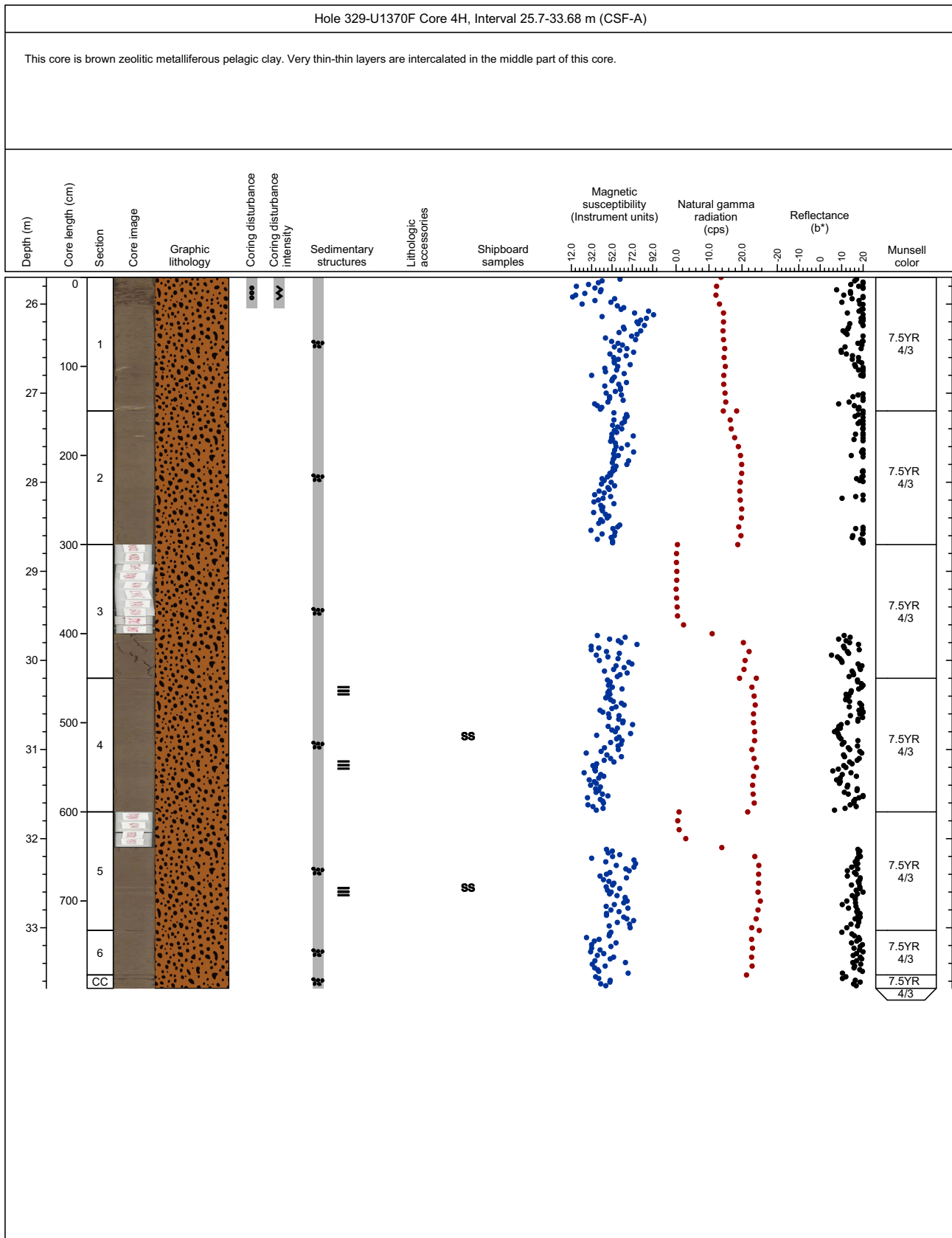
Core Photo



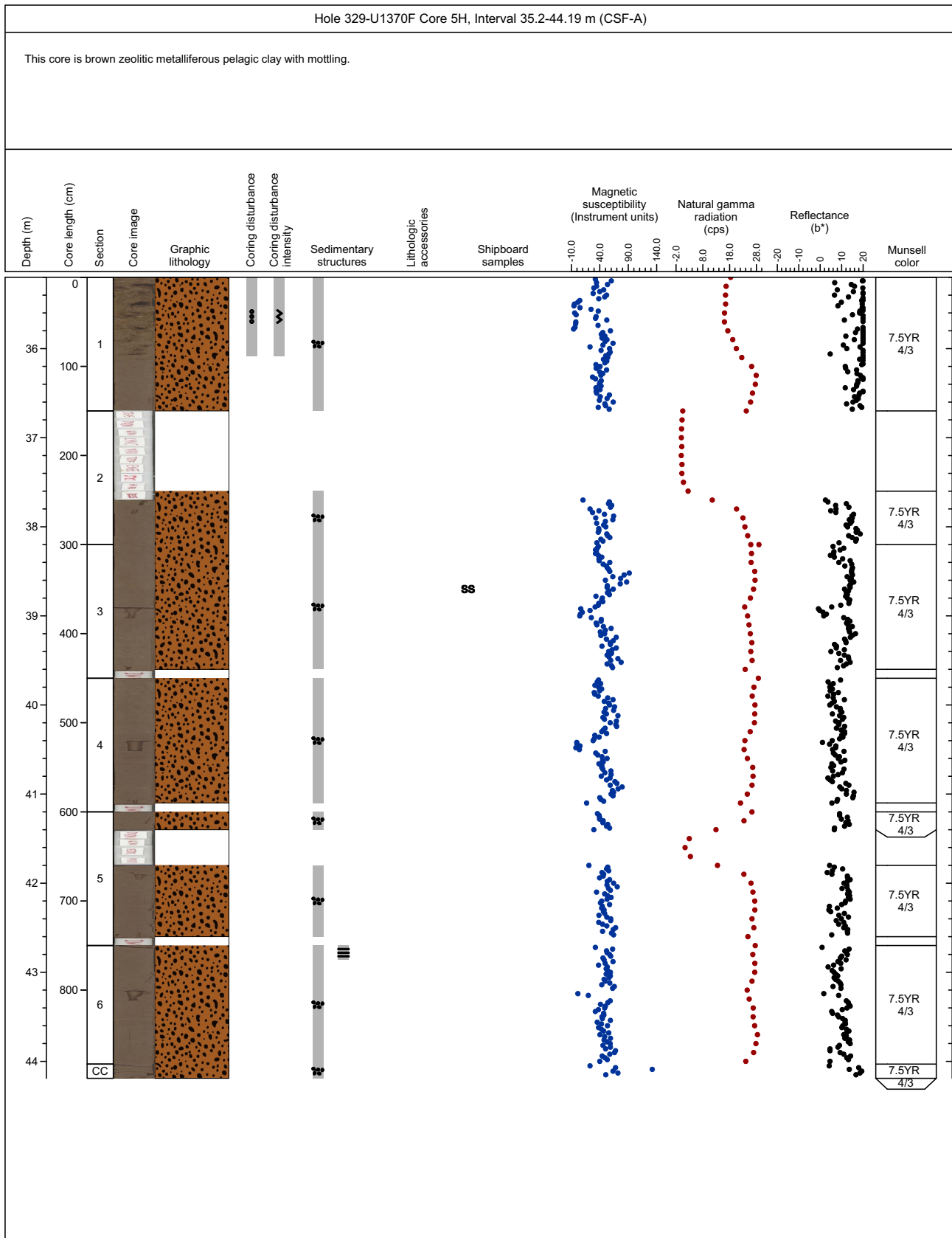
Core Photo



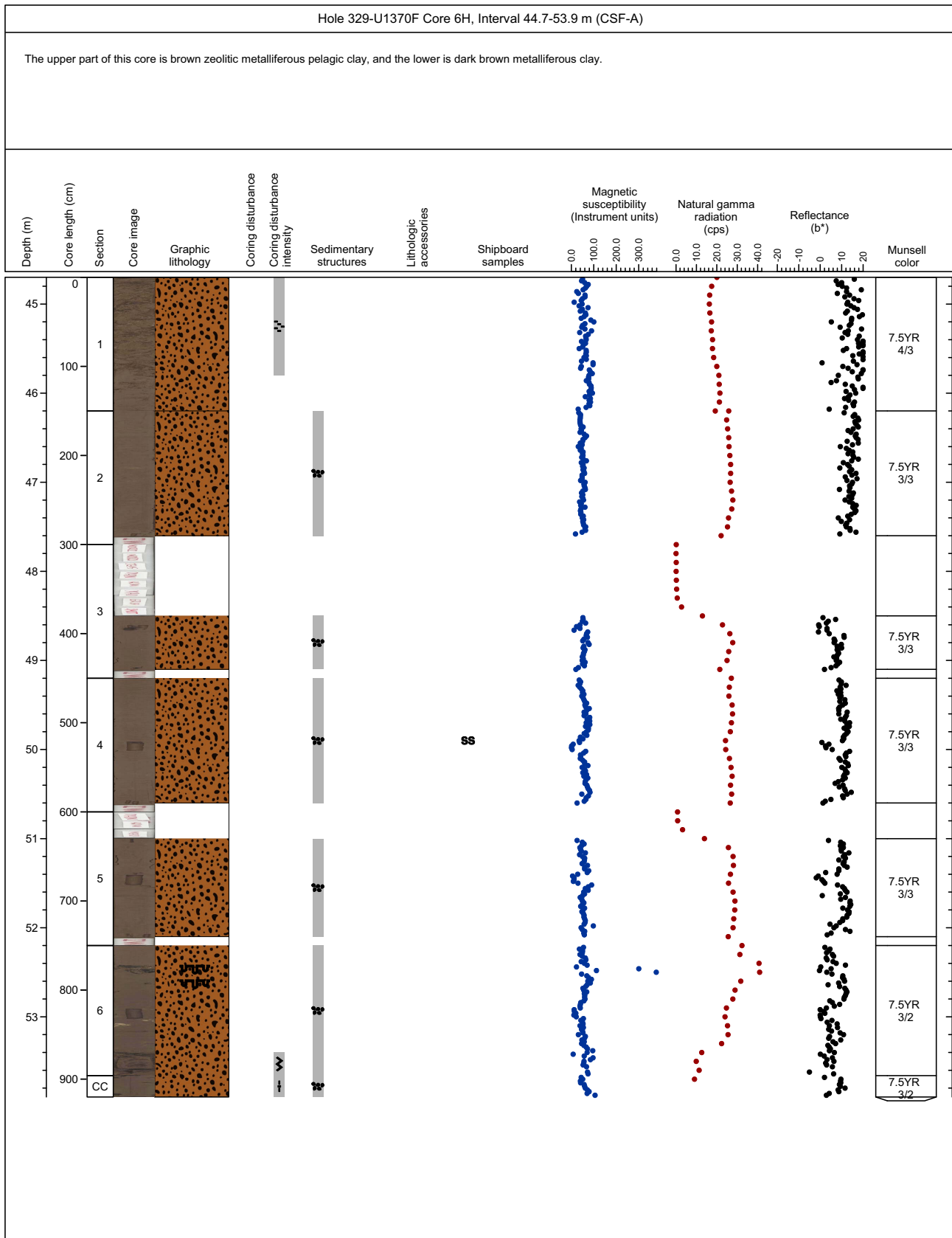
Core Photo



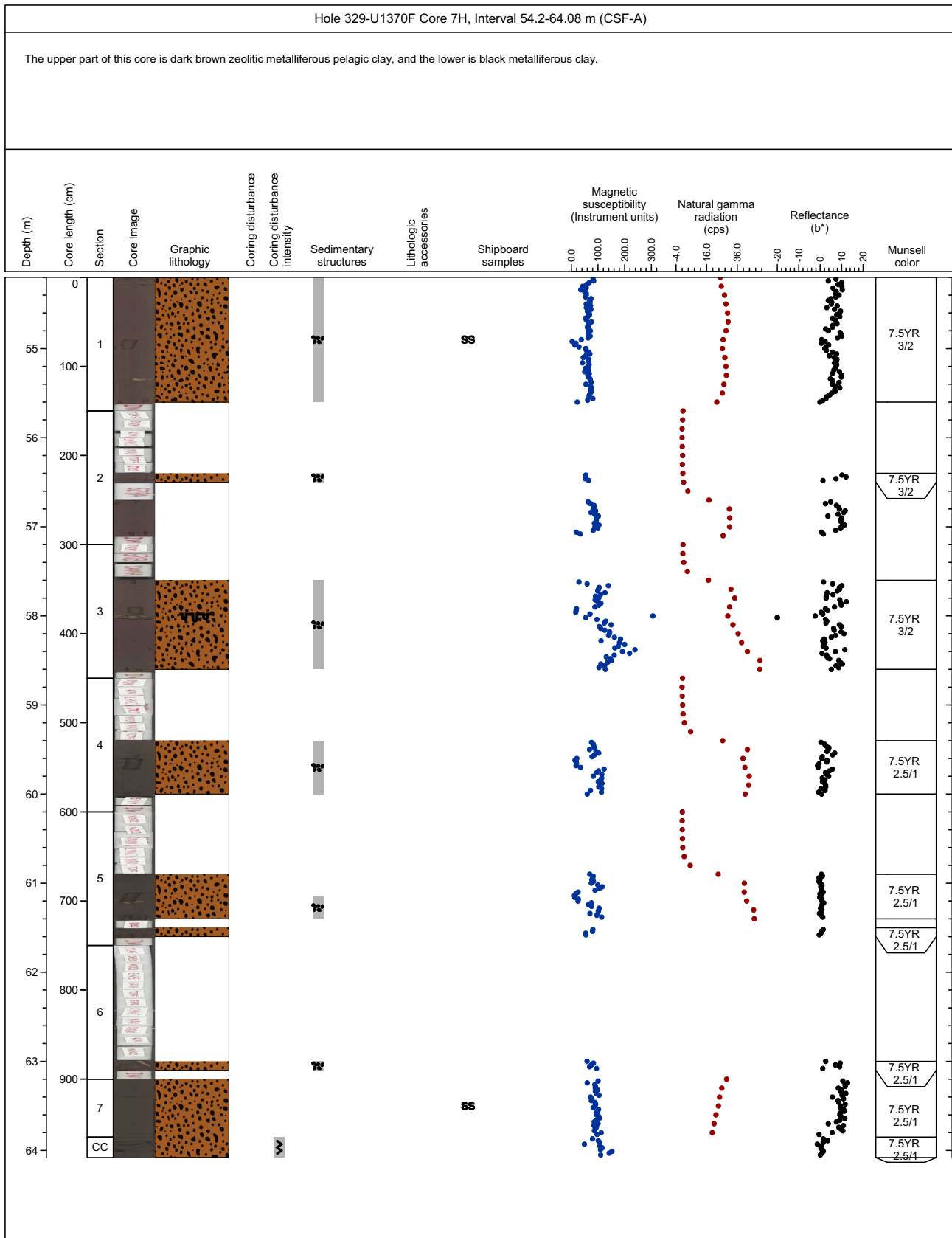
Core Photo



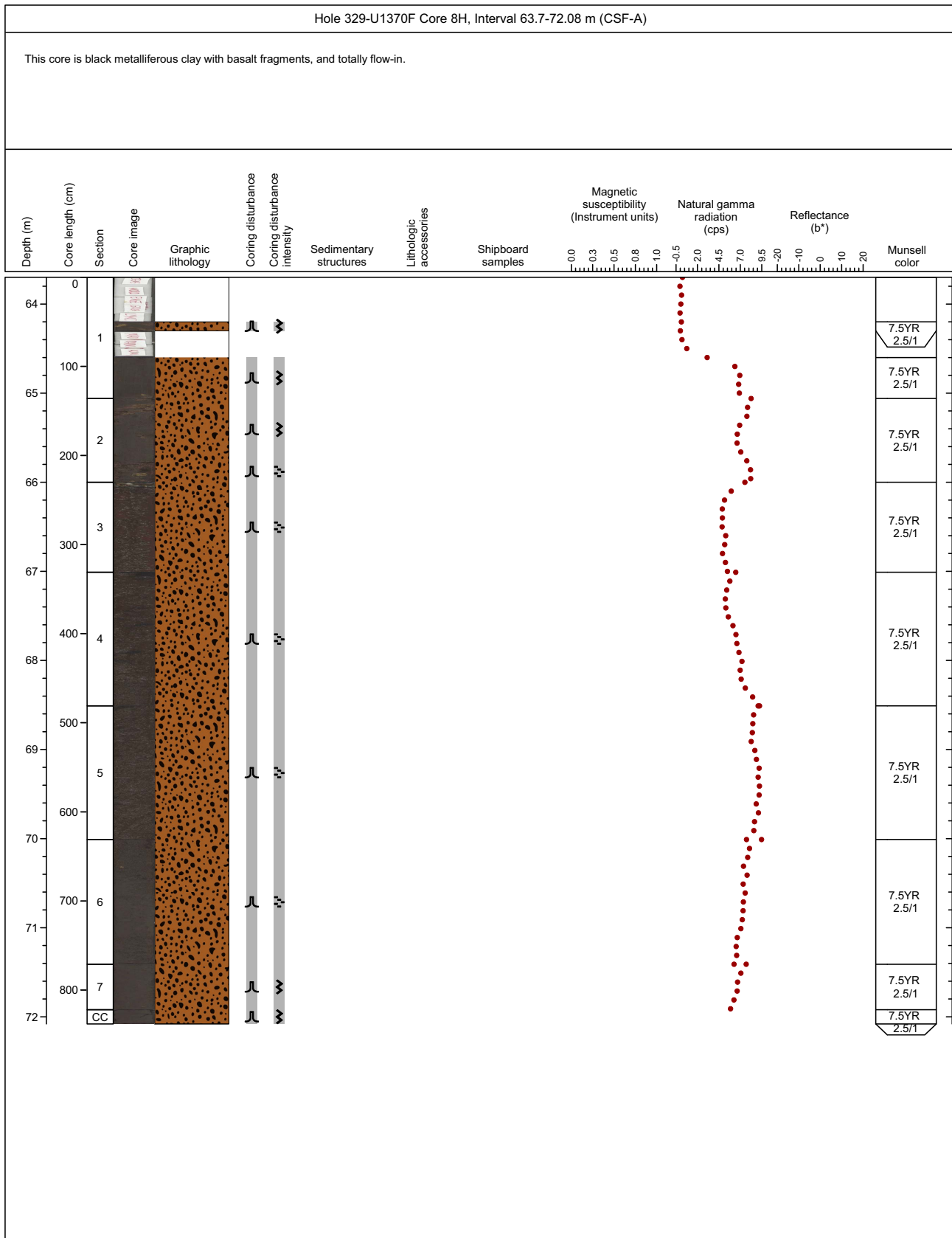
Core Photo



Core Photo



Core Photo





Exp	Site	Hole	Core	Type	Section	Name	TopDepth	BotDepth	Clay	RSO	Zeolite	Volcanic glass	Quartz	Ichthyoliths	Coccolithophores
329	U1370	D	1	H	1	SED	0.1	0.5	38	38	24	0	0	0	0
329	U1370	D	1	H	1	SED	1	1.4	33	33	20	14	0	0	0
329	U1370	D	1	H	2	SED	2	2.4	38	38	15	9	0	0	0
329	U1370	D	1	H	3	SED	3.2	3.6	38	31	25	6	0	0	0
329	U1370	D	1	H	3	SED	3.8	4.2	33	33	27	7	0	0	0
329	U1370	D	1	H	4	SED	5	5.4	31	31	31	7	0	0	0
329	U1370	D	1	H	5	SED	6.5	6.9	38	31	23	8	0	0	0
329	U1370	D	1	H	6	SED	8	8.4	38	38	24	0	0	0	0
329	U1370	D	2	H	2	SED	9.9	10.3	42	33	25	0	0	0	0
329	U1370	D	2	H	3	SED	11.4	11.8	38	38	24	0	0	0	0
329	U1370	D	2	H	3	SED	11.45	11.85	43	5	43	9	0	0	0
329	U1370	D	2	H	5	SED	14.4	14.8	25	35	35	5	0	0	0
329	U1370	D	2	H	7	SED	17.4	17.8	23	32	45	0	0	0	0
329	U1370	D	3	H	3	SED	22.21	22.61	13	40	27	13	7	0	0
329	U1370	D	3	H	4	SED	23.16	23.56	17	42	25	17	0.1	0	0
329	U1370	D	4	H	1	SED	25.55	25.95	26	43	17	9	4	0	0
329	U1370	D	4	H	2	SED	26.56	26.96	17	17	42	25	0	0	0
329	U1370	D	4	H	3	SED	28.55	28.95	26	32	32	6	3	0	0
329	U1370	D	4	H	5	SED	31	31.4	23	38	31	8	0	0	0
329	U1370	D	5	H	1	SED	35.35	35.75	25	42	25	8	0	0	0
329	U1370	D	5	H	3	SED	37.8	38.2	28	39	22	11	0	0.1	0
329	U1370	D	5	H	5	SED	40.8	41.2	31	31	25	13	0	0	0
329	U1370	D	5	H	6	SED	42.82	43.22	35	35	25	5	0	0	0
329	U1370	D	6	H	2	SED	46	46.4	27	33	33	7	0	0	0
329	U1370	D	6	H	4	SED	49	49.4	33	58	9	0	0	0	0
329	U1370	D	6	H	6	SED	52	52.4	29	71	0	0	0	0	0
329	U1370	D	7	H	1	SED	54	54.4	14	32	45	9	0	0	0
329	U1370	D	7	H	2	SED	55.5	55.9	18	45	32	5	0	0	0
329	U1370	D	7	H	3	SED	57.01	57.41	19	48	33	0	0	0	0
329	U1370	D	7	H	3	SED	57.58	57.98	27	45	18	10	0	0	0
329	U1370	D	7	H	4	SED	58.51	58.91	13	43	35	9	0	0	0
329	U1370	D	7	H	5	SED	60.02	60.42	9	30	59	2	0	0	0
329	U1370	D	7	H	6	SED	61.22	61.62	10	36	54	0	0	0	0
329	U1370	D	7	H	6	SED	61.72	62.12	18	45	32	0	0	0	5
329	U1370	D	7	H	6	SED	62.12	62.52	0	0	0	0	0	0	100
329	U1370	D	7	H	7	SED	62.77	63.17	0	0	0	0	0	0	100
329	U1370	D	8	H	1	SED	63.55	63.95	0	1	0	0	0	0	99
329	U1370	D	8	H	1	SED	64.05	64.45	0	2	0	0	0	0	98
329	U1370	D	8	H	1	SED	64.15	64.55	0	1	1	0	0	0	98
329	U1370	D	8	H	1	SED	64.27	64.67	0	3	16	0	0	0	81
329	U1370	D	8	H	3	SED	66.5	66.9	12	88	0	0	0	0	0
329	U1370	D	8	H	5	SED	69.1	69.5	12	88	0	0	0	0	0



Exp	Site	Hole	Core	Type	Section	Name	TopDepth	BotDepth	Clay	RSO	Zeolite	Volcanic glass
329	U1370	E	1	H	1	SED	1.07	1.47	20	47	20	13
329	U1370	E	2	H	6	SED	14	14.4	23	32	32	14
329	U1370	E	3	H	4	SED	20.7	21.1	21	36	36	7
329	U1370	E	4	H	4	SED	30.2	30.6	29	42	29	0
329	U1370	E	5	H	4	SED	39.94	40.34	33	34	33	0
329	U1370	E	6	H	4	SED	49.43	49.83	27	63	0	10
329	U1370	E	7	H	2	SED	55.56	55.96	27	46	27	0
329	U1370	E	9	H	1	SED	62	62.4	23	70	0	7



Exp	Site	Hole	Core	Type	Section	Name	TopDepth	BotDepth	Clay	RSO	Zeolite	Volcanic glass
329	U1370	F	1	H	4	SED	4.9	5.3	15	50	25	10
329	U1370	F	2	H	5	SED	13.1	13.5	21	42	29	8
329	U1370	F	3	H	4	SED	21.1	21.5	24	41	24	12
329	U1370	F	4	H	4	SED	30.65	31.05	31	44	19	6
329	U1370	F	4	H	5	SED	32.35	32.75	30	30	20	20
329	U1370	F	5	H	3	SED	38.5	38.9	23	38	23	15
329	U1370	F	6	H	4	SED	49.7	50.1	30	70	0	0
329	U1370	F	7	H	1	SED	54.7	55.1	12	44	44	0
329	U1370	F	7	H	7	SED	63.3	63.7	23	77	0	0



Thin section: 329-U1370E-9H-CC-W 29/31-TS_63
Depth CSF-A (m): 71.79-71.81
Rock name: sparsely phyrlic basalt
Grain size: cryptocrystalline
Texture: spherulitic
Where sampled: core catcher

Primary mineralogy	Percent present	Percent original	Size			Shape	Comments
			min	max	mode		
Phenocrysts							
Plagioclase	4	4	0.01		0.3	lath	
Pyroxene	1	2	0.01	0.5	0.3	irregular	

Groundmass/matrix

Secondary mineralogy	Percent	min	max	mode	Replacing/ filling	Comments
Saponite	2					groundmass and pyroxene was replaced
FeOx	2					

Vesicles	Modal	Shape	max	min	mode	Fill percent	Comments
V1	2	rounded	0.5	0.1	0.3	50	

Veins	Shape	Generation	Avg. thickness		Infilling	Comments
			(mm)			

Comments: moderately altered sed-base interface pillow basalt, with goundmass and pyroxene been altered very much