



Wackestone  
contains grains of siliceous  
to TT #17 above

↑  
TS#21

SED VCD



99

bottom  
lava flow

bottom  
lava flow

SED #

Pepanitic?  
reddish gray  
basalt breccia  
matrix - supported  
v. poorly - sorted  
micrite - basalt  
sandstone w/  
bioclasts (annelid)  
bedding locally  
preserved







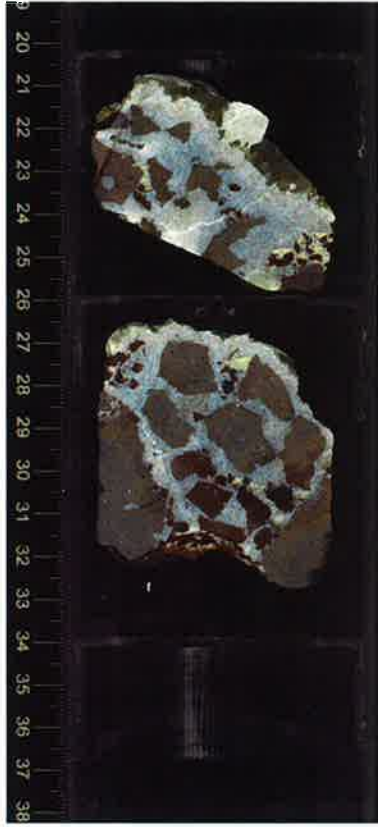
SED GR 2





SED GR3

330-U1374A-6R-4-A\_SHLF2741731\_20110107110648



SED GR4











746  
VA

base of lava flow



72

very dark brown  
vitic sandstone  
coarse sand size  
calcareous

66 VA

same sed  
as below

73 VA

(I) vitric  
basalt  
sandstone  
(with rare  
bioclast)  
cemented

dark yellowish brown  
very coarse sand size  
subangular  
carbonate cemented

75 VA

lamina

74 VA

76 VA

Yellow micrite  
surround clast  
and partly filled  
the intergranular spaces

75 VA

bioclast rich ✓  
bivalve (~9mm)  
gastropod (φ 2-4mm)  
annelid (~3mm)  
alga (~2mm)





(I)  
(continued)

Basalt grains  
bioclast  
bioclast-bearing  
#125 TS  
bioclast rich

bioclast rich

φ5.5  
1A

SS

gastropod  
φ3mm

SS

SS

SS

(J) basalt  
vibric sandst  
one with  
rare bioclast  
cemented

φ6.0mm  
1A

dark reddish brown  
granules in sand  
subangular  
bedded  
vibric SS  
- no bioclast  
- calcite cemented



φ6  
1A

φ4mm  
1A

φ4mm  
1A

φ5.5mm  
1A

φ5.5mm  
1A

φ6  
1A



#127

TS

White  
altered  
grain  
zone  
↓  
Porosity  
high

500

(7) (continued)

φ6mm  
VA

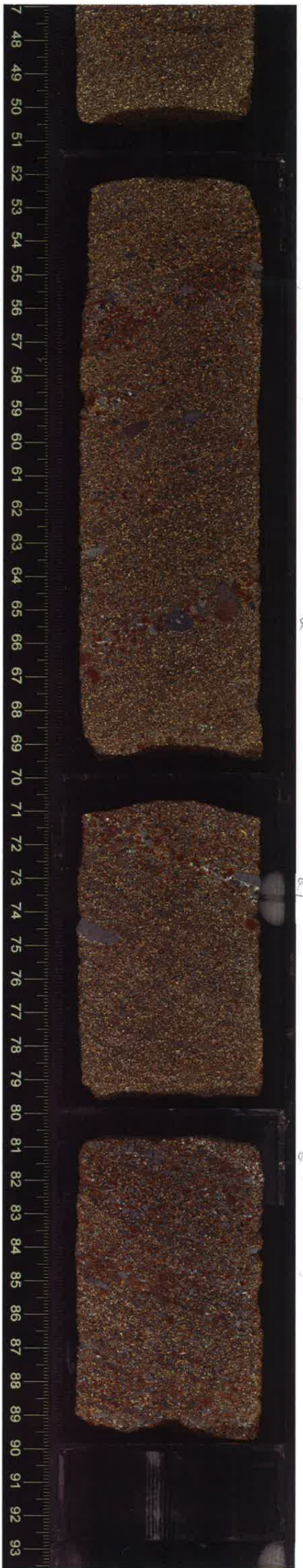
φ6mm  
VA

inclined

φ9mm  
VA

inclined

φ10mm  
A





Continue

330-U1374A-8R-1-A\_SHLF2744201\_20110108012213



(8) continued

#129 TS

φ15mm  
3R

φ9  
VA

VA  
410

VA  
60

φ27mm  
L



φ11mm  
A

erosional  
(opposite side)

φ8mm  
A

MB10

φ9  
VA

φ46mm  
VA

φ37  
A





(continued)

φ 70mm VA

φ 45mm VA

φ 35mm VA

φ 8mm A

φ 5mm VA

# 130

TS

φ 5.5mm VA

φ 9mm VA

φ 4mm VA

bioclast slightly rich (shell fragments, alga)



φ 70mm VA

φ 45mm A

φ 6mm VA

φ 6mm VA

φ 5mm A

φ 5mm VA



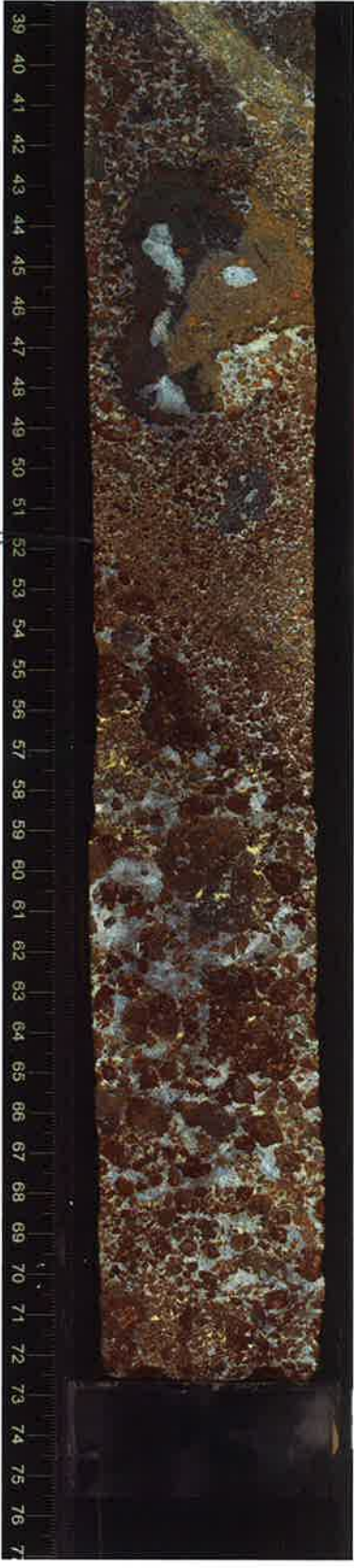
②  
 1cm  
 16cm  
 #B1  
 TS  
 #A  
 Groupetal →



← bioclast  
 clast!!  
 calcite cement and  
 multicolor  
 conglomerate  
 rounded  
 containing  
 many bioclast  
 (in form)  
 bioclasts

Ⓚ  
 multicolor  
 vitric basalt  
 breccia with  
 bioclast,  
 cemented

52  
 cm



#A  
 calcite  
 cemented  
 yellowish  
 micrite  
 s. ll  
 some  
 space

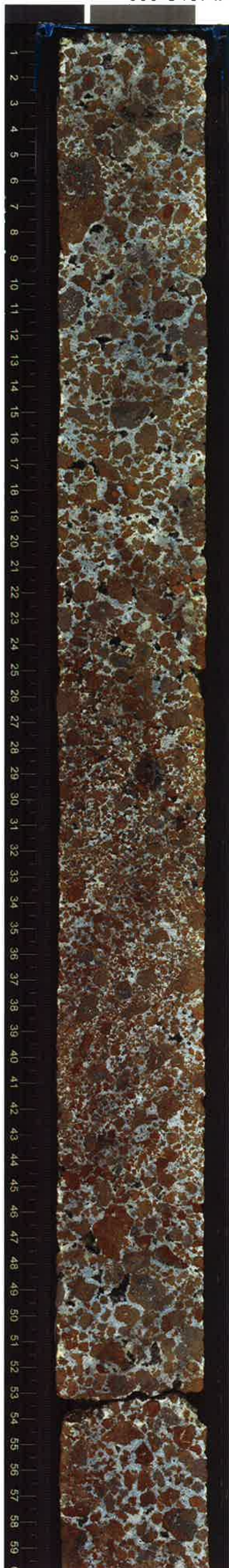
#A  
 #59  
 (conglomerate)  
 VA



calcite  
cemented/voids





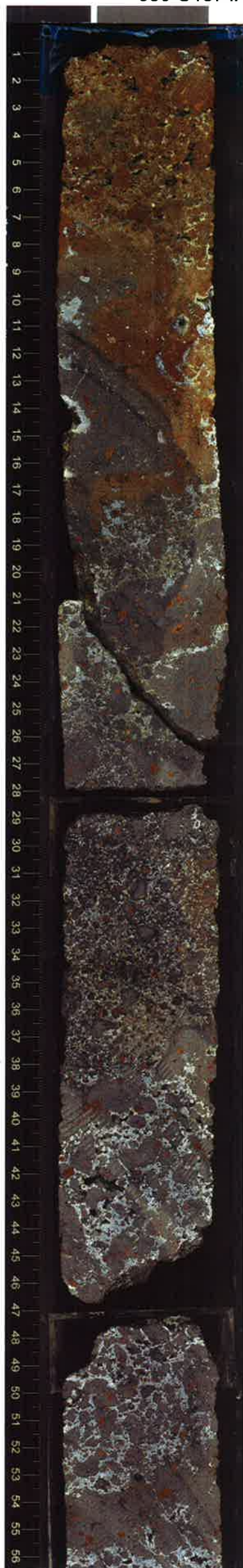


Sand  
~clay  
infilled  
intragrain  
space

clay  
infilled  
void



Yellowish  
clay  
partly  
filled  
the  
interclass  
spaces





330-U1374A-9R-4-A\_SHLF2744741\_20110108074528



↓ yellow clay  
filled  
the void  
after cement

SED  
9R4