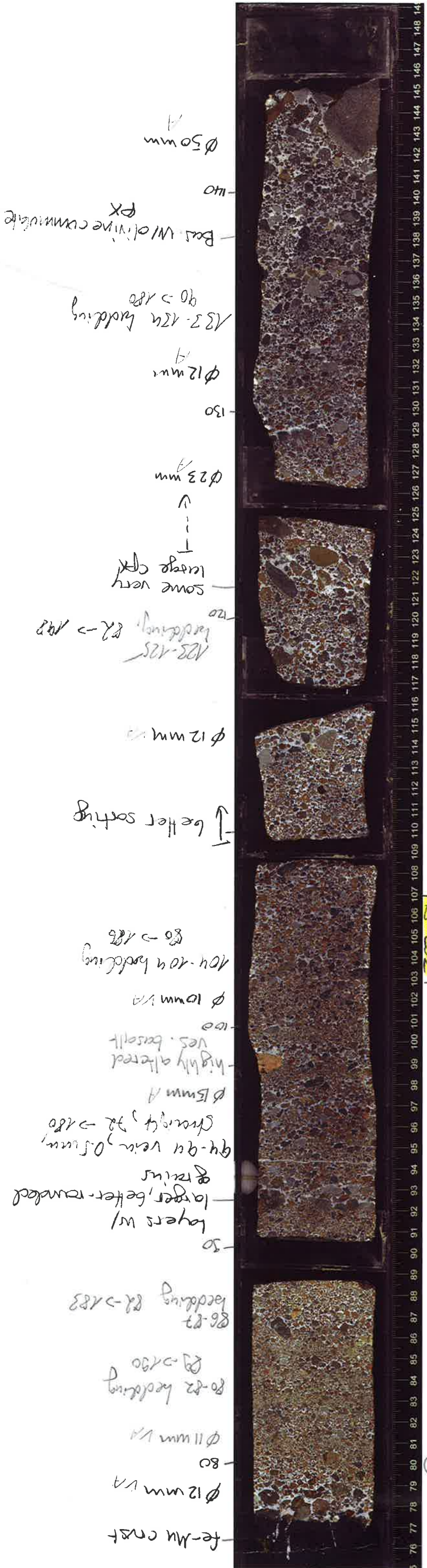
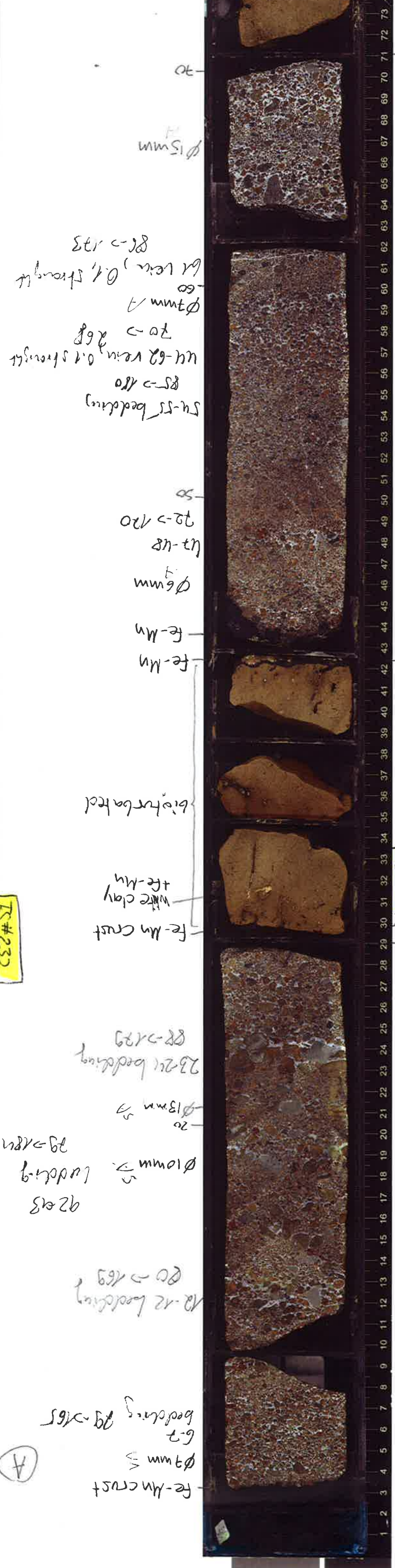


SEDIRI



76-77 Fe-Mn crust
 78-80 ϕ 12 mm VA
 81-82 ϕ 11 mm VA
 83-84 80-82 bedding
 85-86 80-82 bedding
 87-88 bedding 82-83
 89-91 layers w/ larger, better-rounded grains, better sorting
 92-93 94-94 vein, 0.5 mm, strong, 82-83
 94-95 ϕ 15 mm A
 96-99 highly altered ves. basalt
 100-102 ϕ 10 mm VA
 103-104 104-104 bedding 80-83
 105-106 TS #232
 107-108 white clay + Fe-Mn
 109-110 bioturbated
 111-112 ϕ 12 mm VA
 113-114 better sorting
 115-116 ϕ 12 mm VA
 117-118 123-125 bedding, 82-83
 119-120 some very large cpx
 121-122 ϕ 23 mm A
 123-125 123-125 bedding, 82-83
 126-127 some very large cpx
 128-129 ϕ 23 mm A
 130-131 130-130 bedding
 132-133 132-132 bedding
 134-135 132-132 bedding
 136-137 132-132 bedding
 138-139 Bas. w/ olive cumulate
 140-141 ϕ 50 mm A
 142-144 142-144 bedding
 145-146 142-144 bedding
 147-148 142-144 bedding
 149-150 142-144 bedding
 151-152 142-144 bedding
 153-154 142-144 bedding
 155-156 142-144 bedding
 157-158 142-144 bedding
 159-160 142-144 bedding
 161-162 142-144 bedding
 163-164 142-144 bedding
 165-166 142-144 bedding
 167-168 142-144 bedding
 169-170 142-144 bedding
 171-172 142-144 bedding
 173-174 142-144 bedding



1-2 A zone
 3-4 fine-grained grain-supported volcanic breccia (thic-ritic) cemented
 5-6 glassy, med-ves. altered
 7-8 B grains
 9-10 larger grains are better rounded
 11-12 some vends
 13-14 altered "ashuff" (bioturbated)
 15-16 TS #231
 17-18 some grain
 19-20 B. non some w/cpx
 21-22 Fe-Mn
 23-24 Fe-Mn
 25-26 ϕ 6 mm
 27-28 22-24 bedding
 29-30 Fe-Mn crust
 31-32 white clay + Fe-Mn
 33-34 bioturbated
 35-36 Fe-Mn
 37-38 Fe-Mn
 39-40 ϕ 15 mm A
 41-42 42-42 bedding
 43-44 42-42 bedding
 45-46 42-42 bedding
 47-48 42-42 bedding
 49-50 42-42 bedding
 51-52 42-42 bedding
 53-54 42-42 bedding
 55-56 42-42 bedding
 57-58 42-42 bedding
 59-60 42-42 bedding
 61-62 42-42 bedding
 63-64 42-42 bedding
 65-66 42-42 bedding
 67-68 42-42 bedding
 69-70 42-42 bedding
 71-72 42-42 bedding
 73-74 42-42 bedding

76-77 Fe-Mn crust
 78-80 ϕ 12 mm VA
 81-82 ϕ 11 mm VA
 83-84 80-82 bedding
 85-86 80-82 bedding
 87-88 bedding 82-83
 89-91 layers w/ larger, better-rounded grains, better sorting
 92-93 94-94 vein, 0.5 mm, strong, 82-83
 94-95 ϕ 15 mm A
 96-99 highly altered ves. basalt
 100-102 ϕ 10 mm VA
 103-104 104-104 bedding 80-83
 105-106 TS #232
 107-108 white clay + Fe-Mn
 109-110 bioturbated
 111-112 ϕ 12 mm VA
 113-114 better sorting
 115-116 ϕ 12 mm VA
 117-118 123-125 bedding, 82-83
 119-120 some very large cpx
 121-122 ϕ 23 mm A
 123-125 123-125 bedding, 82-83
 126-127 some very large cpx
 128-129 ϕ 23 mm A
 130-131 130-130 bedding
 132-133 132-132 bedding
 134-135 132-132 bedding
 136-137 132-132 bedding
 138-139 Bas. w/ olive cumulate
 140-141 ϕ 50 mm A
 142-144 142-144 bedding
 145-146 142-144 bedding
 147-148 142-144 bedding
 149-150 142-144 bedding
 151-152 142-144 bedding
 153-154 142-144 bedding
 155-156 142-144 bedding
 157-158 142-144 bedding
 159-160 142-144 bedding
 161-162 142-144 bedding
 163-164 142-144 bedding
 165-166 142-144 bedding
 167-168 142-144 bedding
 169-170 142-144 bedding
 171-172 142-144 bedding
 173-174 142-144 bedding

(A)
(continued)

24
Ø 50 mm
VA
6-8 7cm
bedding
85 → 007
(erosional?)
10

Ø 6mm
VA

26

Ø 6mm
VA

29-30
bedding
82 → 015
30

Ø 6mm
VA

40

Ø 4mm
VA

45-49
bedding
non-oriented

50

51-55
bedding, non-oriented

Ø 4mm
A

Volcanic
Sandstone
(rich in glass)

(C)

58-61
bedding,
non-oriented

63-70 bedding
82 → 188

Bas. w/olivine-px
cumulate

(heterolithic)

fresh glass
(not vesiculated)
(merulitic)

rare but
present

Ø 8mm
VA

70

Ø 4mm
VA

75-75
bedding
88 → 354

80

bedding
84-91 80 → 80

Ø 3mm
VA

90

93-100
bedding
60 → 210

Ø 4mm VA

100

Ø 2mm VA

107-112
bedding 74 → 177

110

Ø 17mm
VA

gradual
transition

115-120
bedding 84 → 174
120

Ø 8mm VA

123-129
bedding 88 → 184

← (A')

sandy breccia

(A) continued

φ6mm VA

VA

10

φ4mm VA

VA

20

φ2mm VA

VA

30

φ3mm VA

VA

40

41cm

φ6mm VA

VA

50

φ6mm VA

VA

60

φ6mm VA

VA

68cm

70

(D)



1-11 bedding
90 → 185

78 vein
0.1mm,
straight
90 → 354

98-98
vein, 2mm
90-190 100

24-37
bedding 60 → 197

39-46
bedding 62 → 188

48-53 bedding
81-007
- bioturbated (?)

65-72 bedding
90 → 187

74-79
bedding 89 → 356

75 vein
0.2 straight
82 → 006



φ1mm
(D) continued
well-bedded/layered
volcanic sandstone
grayish/or multic. (below)

80
φ1mm
VA
Turbidite

80-86 bedding
90-180

83-93 vein, 0.2mm
straight
89 → 252

94-96 vein (circular,
u=4, straight, 85 → 184)

99-100 vein, 1mm
slight dip → 189



(C) Subhorizontal deposit

φ7mm VA

110

φ5mm VA

120

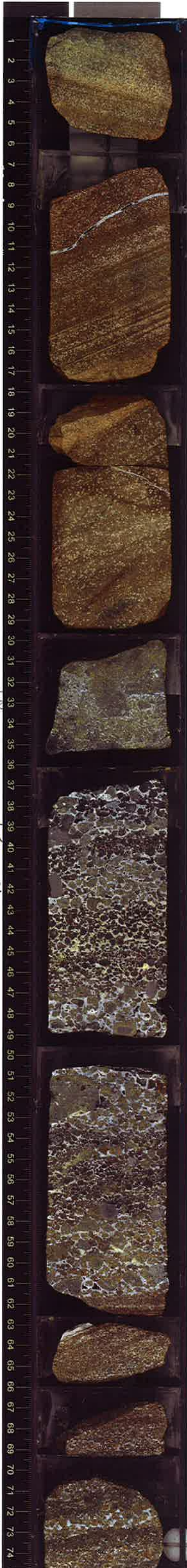
φ2mm VA

130cm

(D) 130-141
vein, 0.2mm
φ2mm straight
← burrow 49-120

φ2mm VA

(D) (continued)



1-5 bedding
62-190
φ 4mm
VA

8-11
vein, u=1, 1.2mm
straight
7-17 bedding
80-336
VA
1/8

18-28 bedding
61-150
2-22
vein, 0.3, straight
65-210

⊙
30cm

⊙
VA
φ 8

rich in large, fresh glass fragments
38-48
bedding 88-166

53-62 bedding
80-350

large (2cm φ)
glass fragment

21-75 bedding
90-179

white spot
Addition?

large
of cummingtonite
x

void
VA
φ 1/2

yellow
clay
void
VA
φ 1/2

void
VA
φ 1/2

yellow
clay
void
VA
φ 1/2

VA
SLP

(D) continued



77-86
bedding
90-181

89-101
bedding
80-179

116-120 bedding
86-180

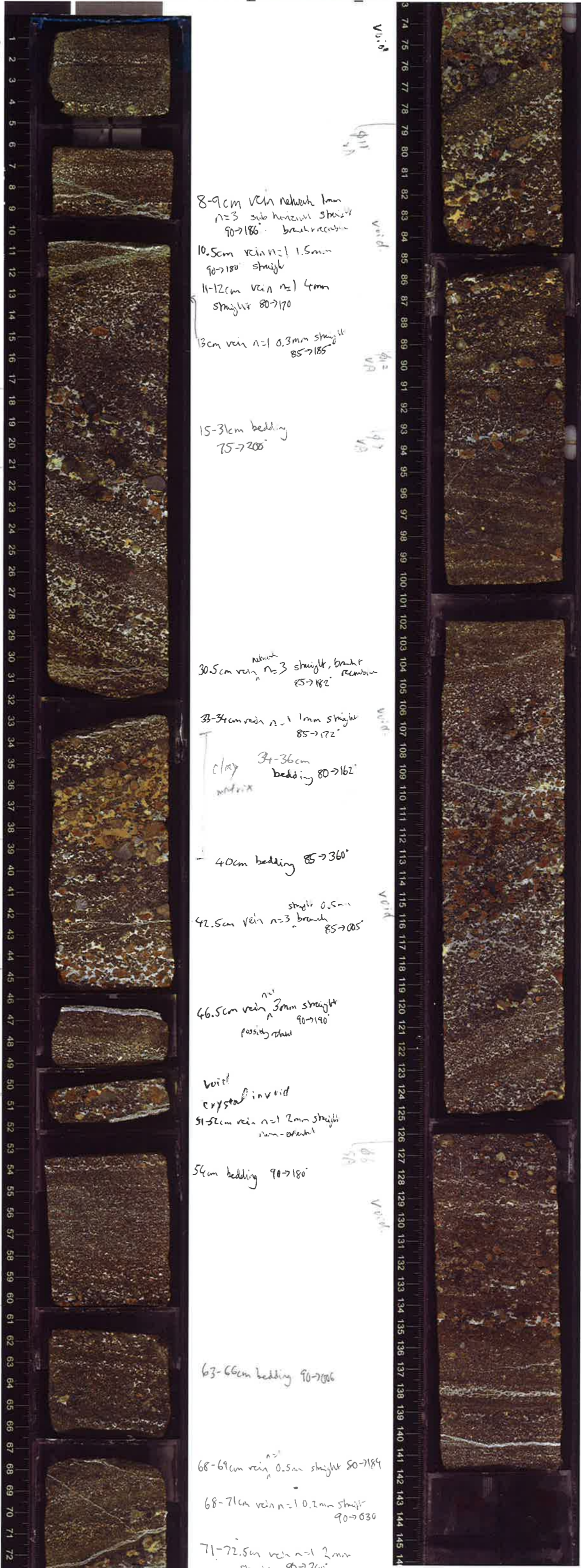
122-123 vein network, u=8
0.1mm, straight 81-208

122-129 bedding
79-185

132-145
bedding
84-336

(A) continue

(A1) continued



42

49

41

45

46

47

48

void

41

void

41

47

void

void

45

void

8-9cm vein network
n=3 sub horizontal straight
90→186° branch recumbent

10.5cm vein n=1 1.5mm
90→180° straight

11-12cm vein n=1 4mm
straight 80→170

3cm vein n=1 0.3mm straight
85→185°

15-31cm bedding
75→200°

30.5cm vein n=3 straight, branch
recumbent 85→182°

33-34cm vein n=1 1mm straight
85→172°

clay matrix 34-36cm
bedding 80→162°

40cm bedding 85→360°

42.5cm vein n=3 straight
branch 85→005°

46.5cm vein n=1 3mm straight
possibly recumbent 90→190°

void crystal in void
51-52cm vein n=1 2mm straight
recumbent

54cm bedding 90→180°

63-66cm bedding 90→006°

68-69cm vein n=1 0.5mm straight
50→184°

68-71cm vein n=1 0.2mm straight
90→030°

71-72.5cm vein n=1 2mm
straight 80→340°

75-78cm bedding 85→154°

91-96cm vein n=1 0.2mm irregular
50→120°

94-99cm vein n=1 0.1mm straight
60→140°

94-100cm bedding 90→188°

98-99cm vein n=1 0.1mm straight
90→190°

103-104cm vein n=2 0.1mm straight
80→170°

109-110cm vein 0.3mm straight 70→015°

111-117cm bedding 80→160

122-123.5cm bedding 78→160°

135-142cm bedding 90→180°

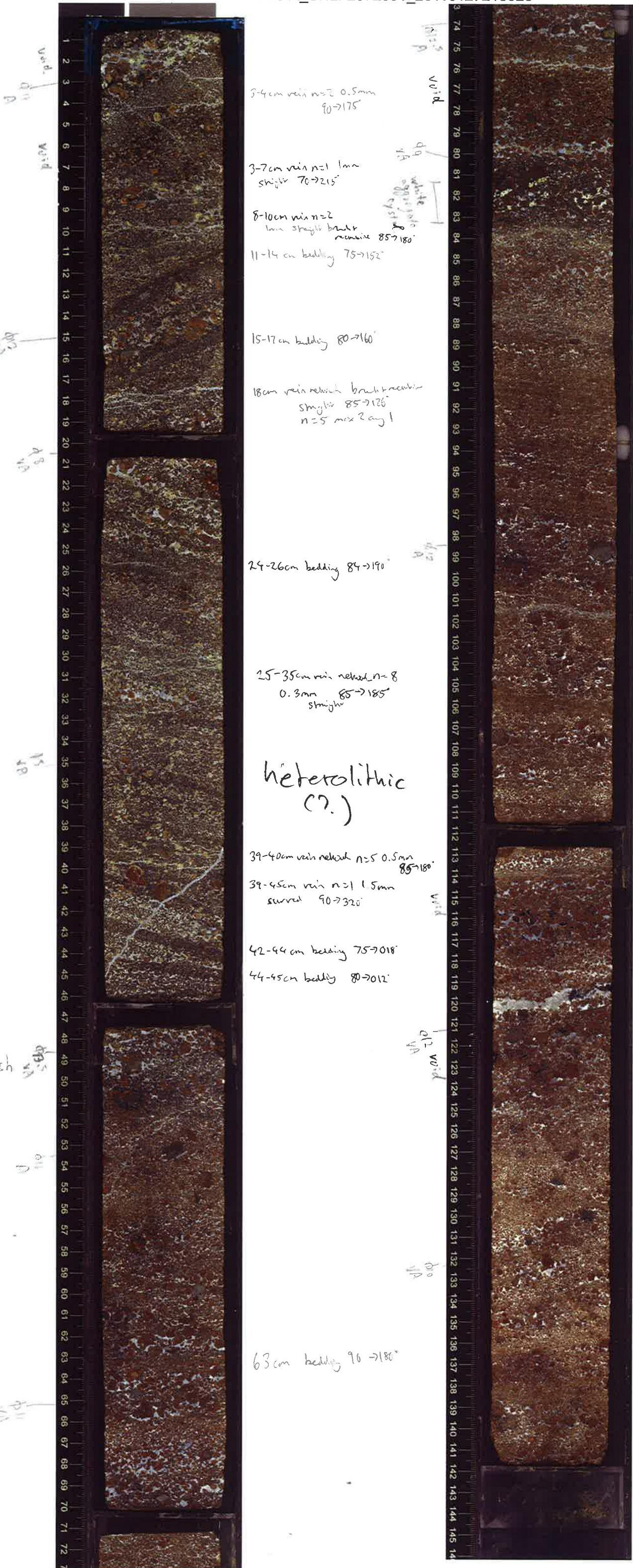
137cm vein n=1 0.2mm straight 85→006°

138cm vein n=1 2-1mm 85→360° straight

140-141cm vein n=1 2mm straight
85→126°

SED IRS

(A) continue

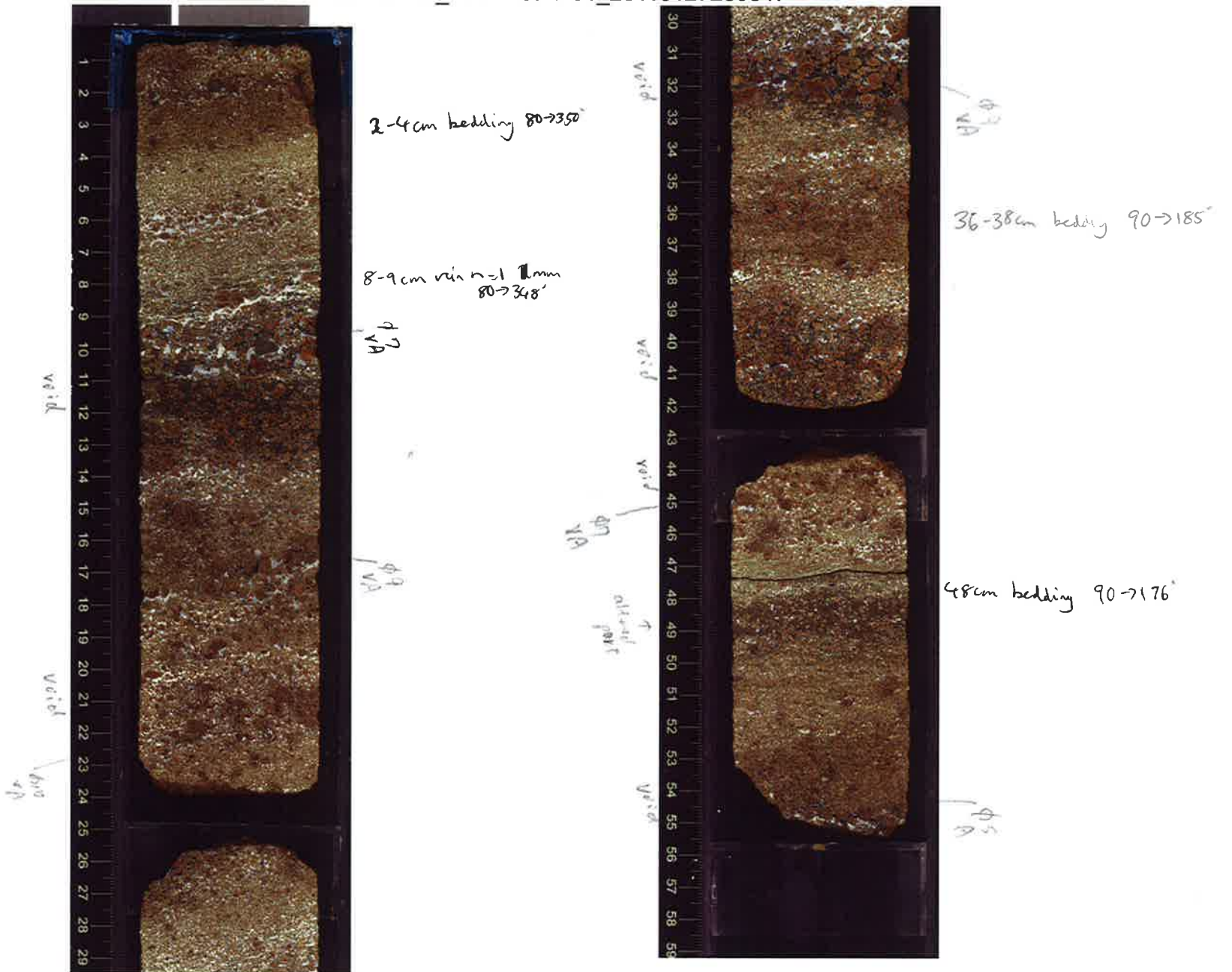


heterolithic (?)

clasts more reddish

(A) continued

330-U1376A-1R-7-A_SHLF2872101_20110127233647



Continued

330-U1376A-2R-1-A_SHLF2874591_20110128011528

? Geopetal

void

void

void

Q11
VA

void

1cm wide
weathered
bedding on
the side of
core

Geopetal

fine sand-silt
filled in spots
86-87cm
bedding
86 → 184
9-11cm vein $n=1$ 0.5mm
irregular 80-152

Q15
VA

void

Q11
VA

Q17
VA

Q19
VA

fine grained
material
void

43-44cm bedding
90 → 172

Q14
VA

49-51cm vein network
14mm straight

57-58cm vein $n=1$ 0.2mm straight
irregular 90-118

59cm bedding 85 → 196

63cm bedding 90 → 178

Q16
VA

82-83cm bedding
85 → 192

Q13
VA

108-110cm bedding
90 → 192

Q13
VA

117-117.5cm bedding
90 → 184

125cm bedding 85 → 360



(A) continue

80
VA



10cm bed 90→184

80
VA

24-25cm bedding 85→174

28-29cm bedding 85→172

fine grain
ind. →

47.5cm vein n=2
spray 2mm

57-58cm bed 85→206

59-64cm bed 86→014

80
VA



83-84cm bed 80→350
← oxidized xerolite

80
VA

94-95cm bed 85→350

99-100cm bed 85→350

117-118cm bedding 85→010

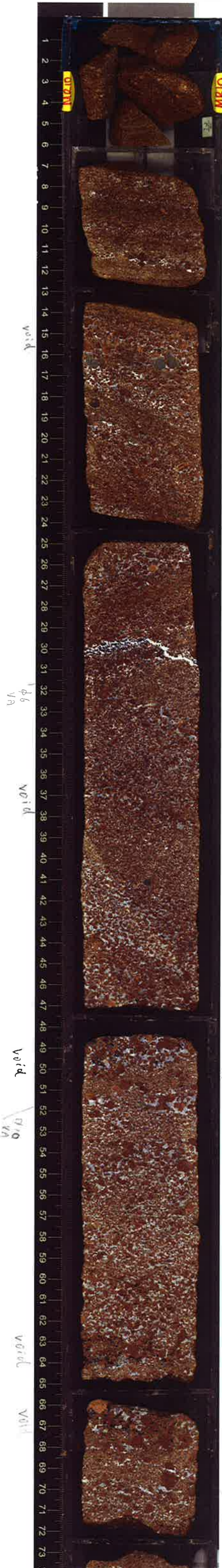
123-124cm bed 82→014

black
dry film

80
VA

U1376A

(A) continue



n=3
8-12cm bedding 90→194°
possibly rotated

14-15cm bedding 89→192°

18-20cm bedding 90→205°

26-27cm bedding

30-31cm vein n=1 2-1mm
irregular 65→205°

void

void

void

void

void

void

void

void

void

void



83cm bedding 90→182°

94-95cm bedding 85→1010

98-100cm bedding 85→1010

109-111cm bedding 90→186°

119-120cm bedding 85→186°

erosional

CROSS
124-126cm bedding
bedding 85→170°

131-133cm bedding 80→160°

erosional 90→186°

140-143cm bedding 90→186°

142-143cm vein 6mm
n=1 straight 90→186°

(A)

(D)

144

Al continue

330-U1376A-2R-4-A_SHLF2874681_20110128055343

cross-bedding
only calcite cement
vitrific with basaltic clasts



5-8 bedding
90 → 176

← d₁
VA
d₂ = 0
VA

16-28 vein, n=1, 1mm,
branched, 80 → 242

↓ d₁
VA

24-33 bedding, n=3
90 → 179

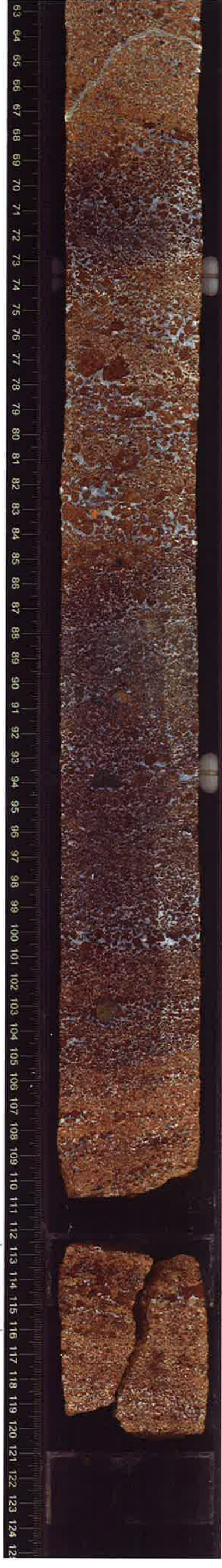
↓ d₁
VA

↓ d₁
VA

47-52
bedding
55 → 199

58-62
bedding n=3
68 → 196

VA ↓ d₁
VA ↓ d₂



64-68 vein, n=1, 1.5mm, 2mm
2u → ± 130

66-68
bedding
61 → 628

73-85
bedding
80-160

↓ d₁
VA

↓ d₁
VA

↓ d₁
VA

101-111
bedding
71-161

↓ d₁
VA

112-120
bedding
non-overlapping

(A) Continue

330-U1376A-2R-6-A_SHLF2874741_20110128061212

