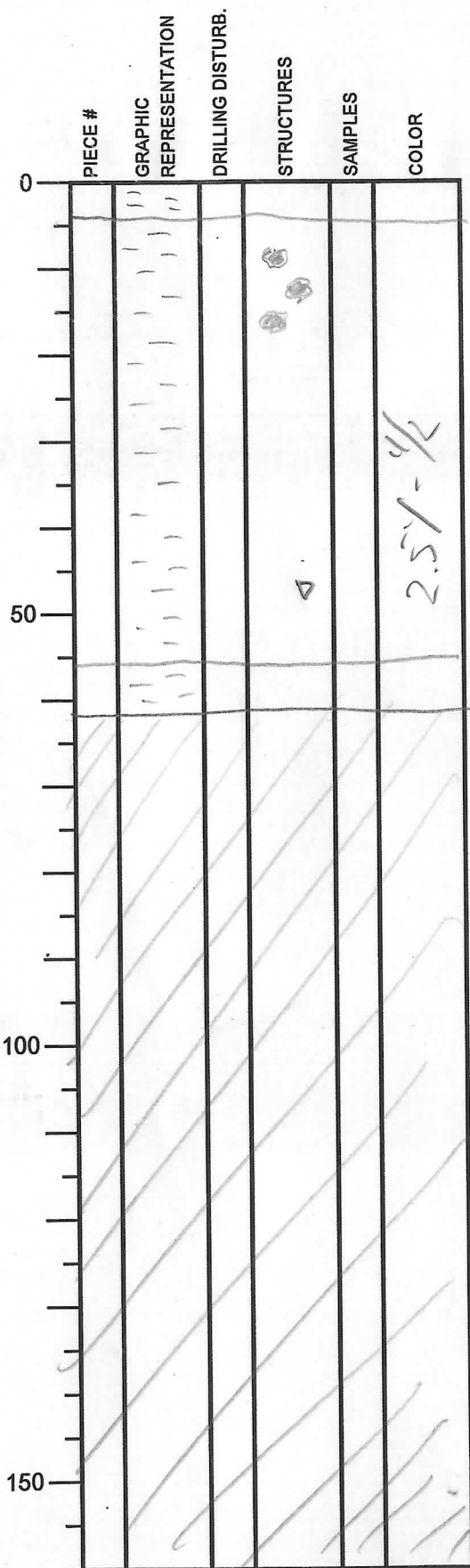


# Integrated Ocean Drilling Program Visual Core Description

NO. 287  
 DATE: 2/17/2010  
 EXP.: 333  
 SITE/HOLE: C0511C  
 CORE: 1H  
 SECTION: 01-A  
 TOP DEPTH (m CSF):



SECTION DESCRIPTION

2.5Y-4/3 Olive brown sandy clay  
 color mottling

Dark grayish yellow clay  
 outsized clast at 46 cm  
 NS gray sandy clay

Heteropelagic sediments,  
 olive brown sandy clay (youngest), dark grayish yellow clay and gray sandy clay at the base

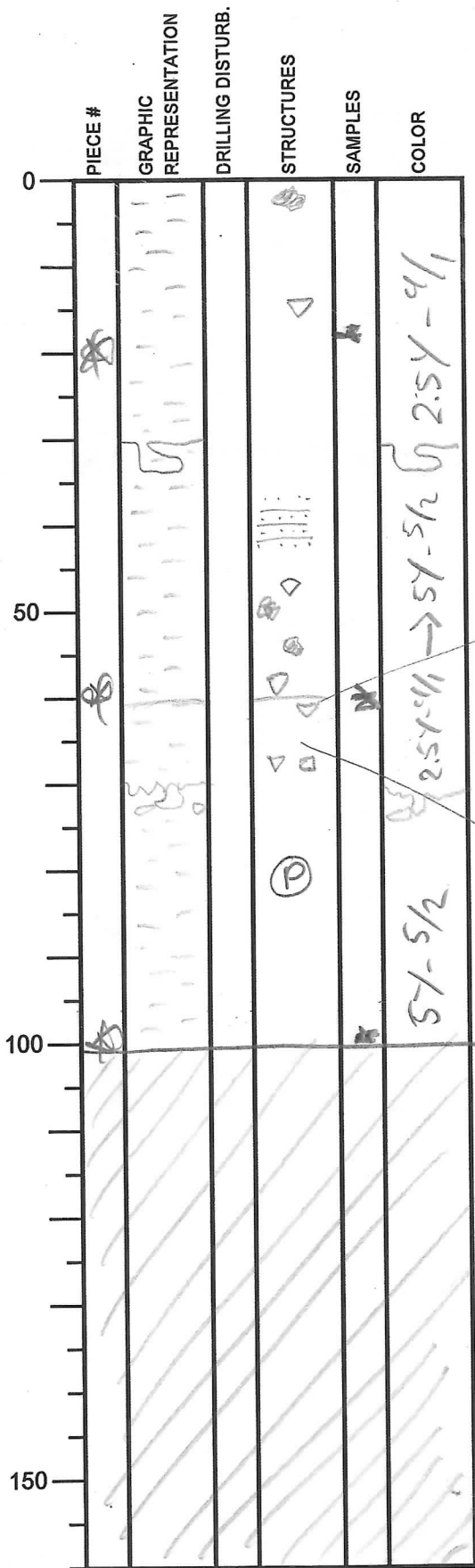
OBSERVER:

Jan L.

# Integrated Ocean Drilling Program

## Visual Core Description

NO. 288  
 DATE: 21/12/20 10  
 EXP.: 333  
 SITE/HOLE: CO011C  
 CORE: 1H  
 SECTION: 3  
 TOP DEPTH (m CSF):



SECTION DESCRIPTION

OBSERVER: *JAL*

Color mottling

Outsized clast at 15cm

Yellowish gray sandy clay

Irregular boundary

Outsized clast at 43cm, 52, 59, 61cm

Thin ash layer

Yellowish-gray → grayish olive sandy clay

Outsized clasts at 66, 68cm

Irregular boundary

Patches of ash

Pumice

Grayish olive sandy clay

\* Smear slides at: 20, 59, 99cm

EOC = 100.5 cm

A succession of sandy clay which can be separated into three intervals based on differences in color. Irregular lower boundaries, color banding and mottling indicates that this may be reworked sediments → MTDs later affected by disturbance

# Integrated Ocean Drilling Program

## Visual Core Description

NO. 289  
 DATE: 21/12/10  
 EXP.: 333  
 SITE/HOLE: COO11C  
 CORE: 1H  
 SECTION: 5  
 TOP DEPTH (m CSF):

PIECE #	GRAPHIC REPRESENTATION	DRILLING DISTURB.	STRUCTURES	SAMPLES	COLOR
0					
			▲		2.54 - 4/1
			● ● ●		5/1
50					← 1/1, 2.54 - 1/1 →
			● ● ●		2.54 - 1/1
			▲		2.54 - 1/1
100			COH COM		
150					

SECTION DESCRIPTION

OBSERVER: *gal*

outsized clast at 12cm  
Thin ash layer

Color mottling

\* Smear slide at 18cm

Thin ash layer

Thin ash layers - truncated

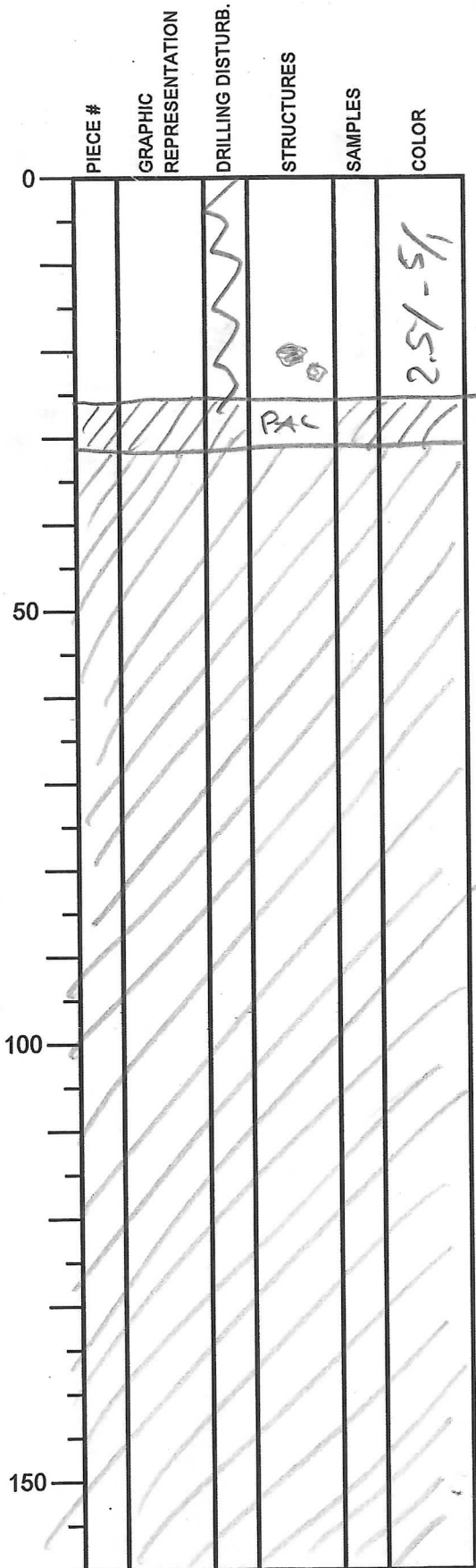
Thin ash layer  
outsized clast at 87cm

A succession of clay which can be separated into three intervals based on differences in color. Irregular lower boundaries of the two upper intervals indicates that these sediments may have been reworked (OITD) - later affected by bioturbation. Both do compare seemingly undisturbed ash layers. Lower interval probably hemipelagic sed.

EOC = 100.5 cm

# Integrated Ocean Drilling Program Visual Core Description

NO. 290  
 DATE: 21/12/2010  
 EXP.: 333  
 SITE/HOLE: C0011C  
 CORE: 1A  
 SECTION: CC  
 TOP DEPTH (m CSF):



SECTION DESCRIPTION

OBSERVER:

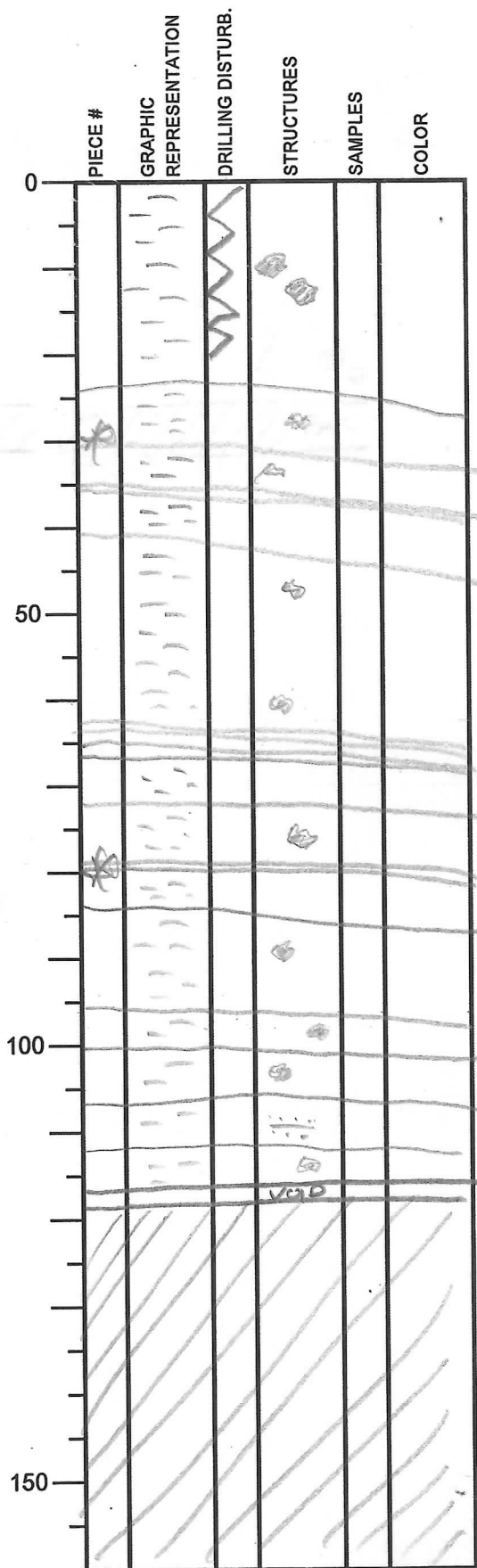
*JAL*

Yellowish gray hemipelagic clay affected by moderate - slight bioturbation.

EOC = 31cm

# Integrated Ocean Drilling Program Visual Core Description

NO. 201  
 DATE: 2/12/2010  
 EXP.: 333  
 SITE/HOLE: C0011C  
 CORE: 2H  
 SECTION: 1  
 TOP DEPTH (m CSF):



SECTION DESCRIPTION

OBSERVER:

JCL

\* Smear slides at 30 & 80 cm

Pink ash

Patches of ash throughout most of this section

LOG-Y-911

Patches of ash

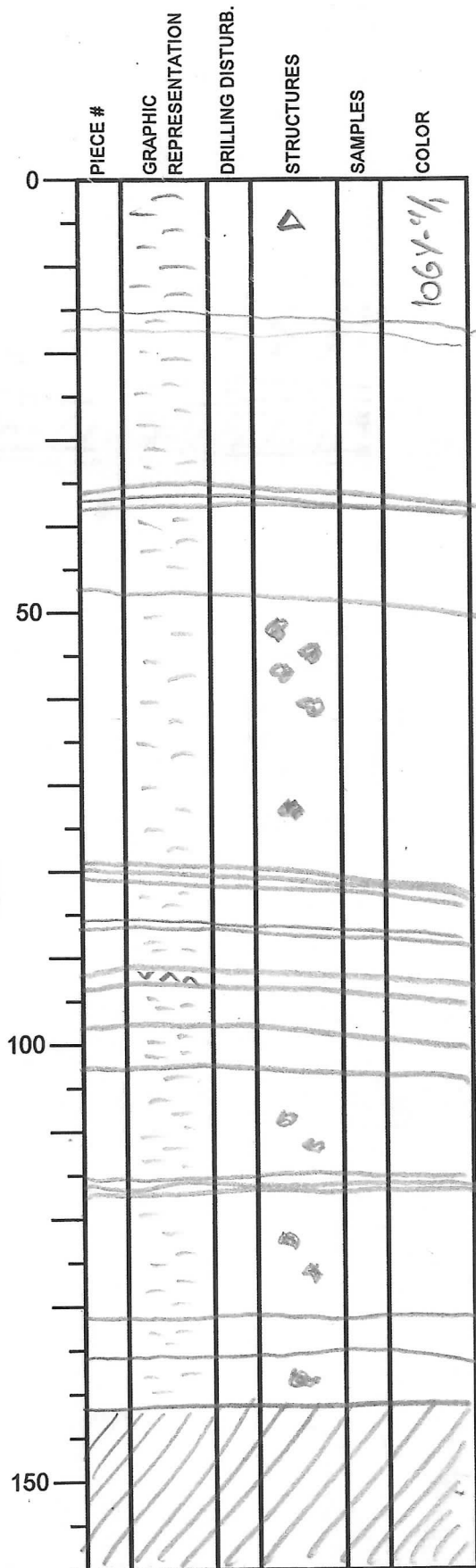
Dark greenish gray clay with a number of thin sand layers and a pink ash layer.

EOC = 118 cm

# Integrated Ocean Drilling Program

## Visual Core Description

NO. 202  
 DATE: 2/12/20 10  
 EXP.: 333  
 SITE/HOLE: COO1C  
 CORE: 2H  
 SECTION: 3  
 TOP DEPTH (m CSF):



SECTION DESCRIPTION

Outsized clast at 3cm

OBSERVER: *fac.*

2.5Y-11

Patches of ash

ash layer  
11-X901

Dominantly dark greenish gray clay with a number of thin sand layers and a yellowish-gray interval from 16-48 cm depth. Frequent color mottling. Hemipelagic sed with thin subtidal sand.

1/2 cm

# Integrated Ocean Drilling Program

## Visual Core Description

NO. 293  
 DATE: 4/12/2010  
 EXP.: 333  
 SITE/HOLE: C0011C  
 CORE: 214  
 SECTION: 4  
 TOP DEPTH (m CSF):

PIECE #	GRAPHIC REPRESENTATION	DRILLING DISTURB.	STRUCTURES	SAMPLES	COLOR
0					
50			1067-11		
100			KMS		
150					

SECTION DESCRIPTION

OBSERVER:

J.L.

Patches of ash

Ash layer

Outsized clast at 56cm

Outsized clast at 79cm (P)

Dark greenish gray clay with a number of thin sand layers and frequent color mottling and some outsized clasts (Punice)

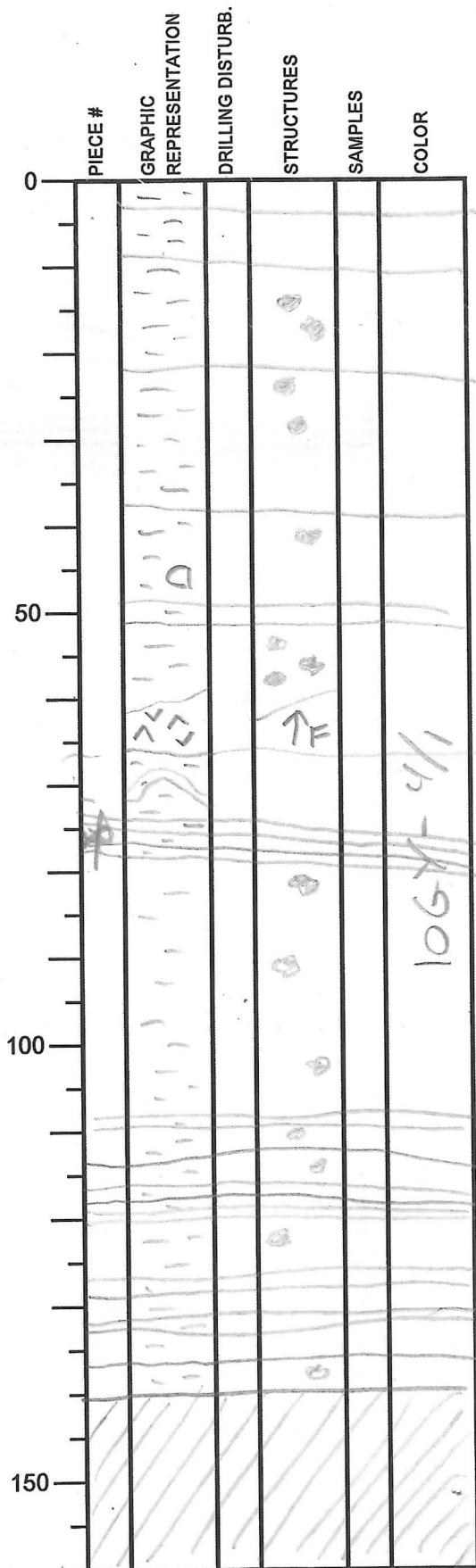
Hemipelagic sed, moderately disturbed, with a number of thin turbiditic sand.

EOC = 121cm

# Integrated Ocean Drilling Program

## Visual Core Description

NO. 241  
 DATE: 2/12/20 10  
 EXP.: 333  
 SITE/HOLE: C0011C  
 CORE: 24  
 SECTION: 6  
 TOP DEPTH (m CSF):



SECTION DESCRIPTION

OBSERVER: *Y.L.*

Pronounced color mottling throughout the section

Patch of ash

Ash layer with a sharp and well defined lower boundary and normal grading

\* Smear slide at 76 cm

Dark greenish gray clay with a number of thin shd layers, frequent color mottling and a ash layer from 62-67.5 cm.

Heteroplastic sediments, moderately bioturbated, with a number of thin turbiditic beds and an ash layer.

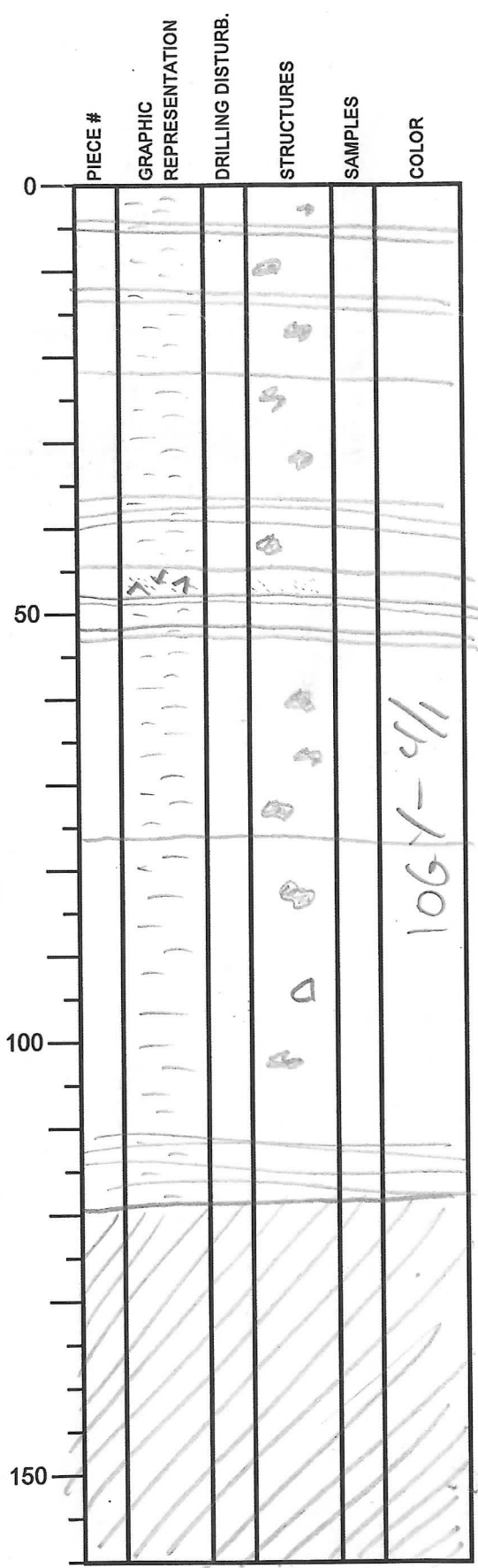
EOC = 191 cm



# Integrated Ocean Drilling Program

## Visual Core Description

NO. 295  
 DATE: 2/12/2010  
 EXP.: 333  
 SITE/HOLE: COO1C  
 CORE: 204  
 SECTION: 7  
 TOP DEPTH (m CSF):



SECTION DESCRIPTION

OBSERVER: *Ja L.*

*Patterns of ash*

*Layer of ash*

Dark greenish gray clay - sandy clay with a number of thin sand layers, frequent color mottling and an ash layer at 44.5-47.5 cm.

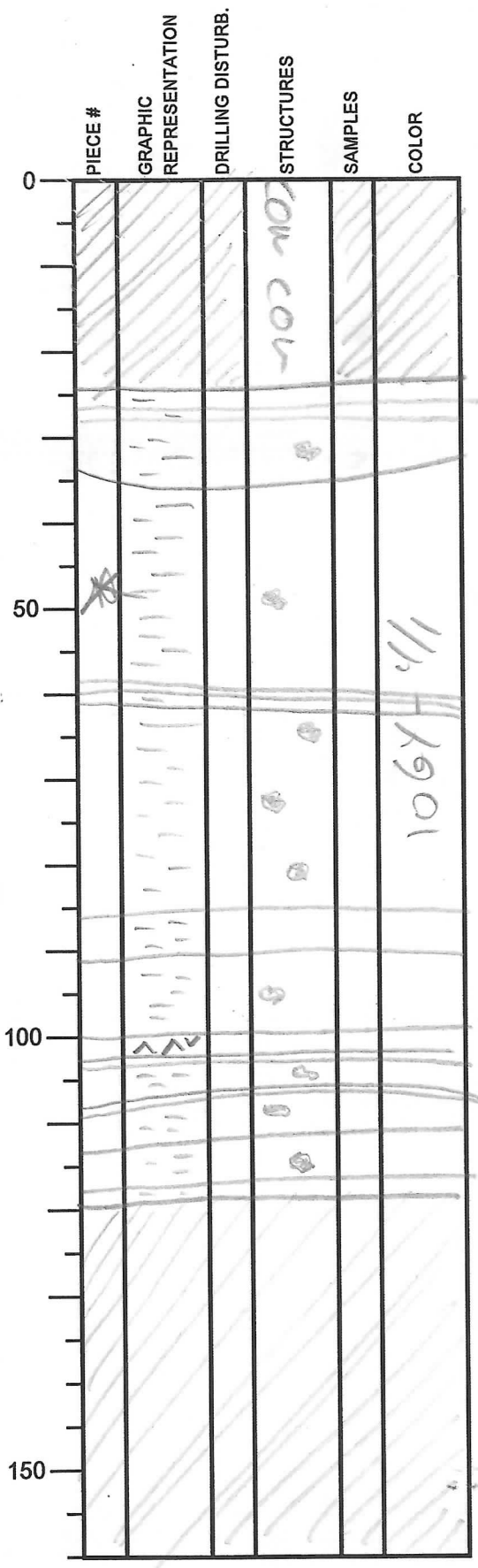
Heripelagic sediments, moderately bioturbated, with a number of thin turbiditic sands and an ash layer.

EOC = 119.5 cm

# Integrated Ocean Drilling Program

## Visual Core Description

NO. 296  
 DATE: 2/12/20 10  
 EXP.: 333  
 SITE/HOLE: COO1C  
 CORE: 214  
 SECTION: 9  
 TOP DEPTH (m CSF):



SECTION DESCRIPTION

OBSERVER: *Y. L.*

Smear slide at 98c -  
and 101. cm.)

Patches of ash

Ash layer, black

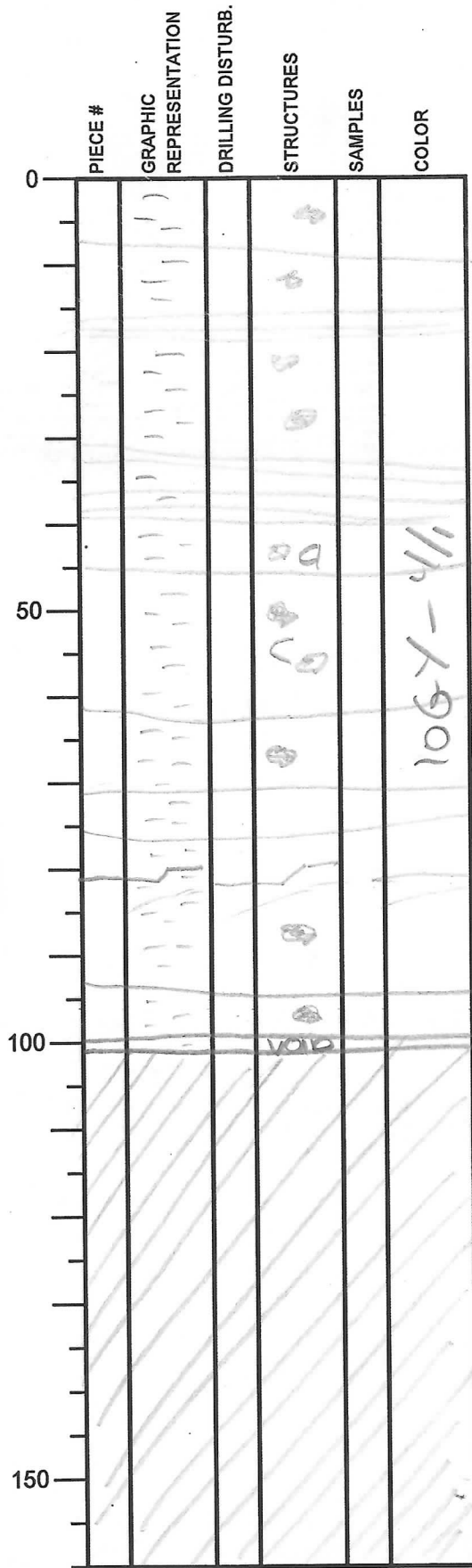
Dark greenish gray clay with  
a number of thin sand layers,  
frequent color mottling and a  
ash layer at 99-102 cm.

Atenipelagic clay,  
moderately disturbed, with  
a number of thin turbiditic  
sands and an ash layer.

EOC = 119.5 cm

# Integrated Ocean Drilling Program Visual Core Description

NO. 297  
 DATE: 21/12/2010  
 EXP.: 333  
 SITE/HOLE: COO11C  
 CORE: 2H  
 SECTION: 11  
 TOP DEPTH (m CSF):



SECTION DESCRIPTION

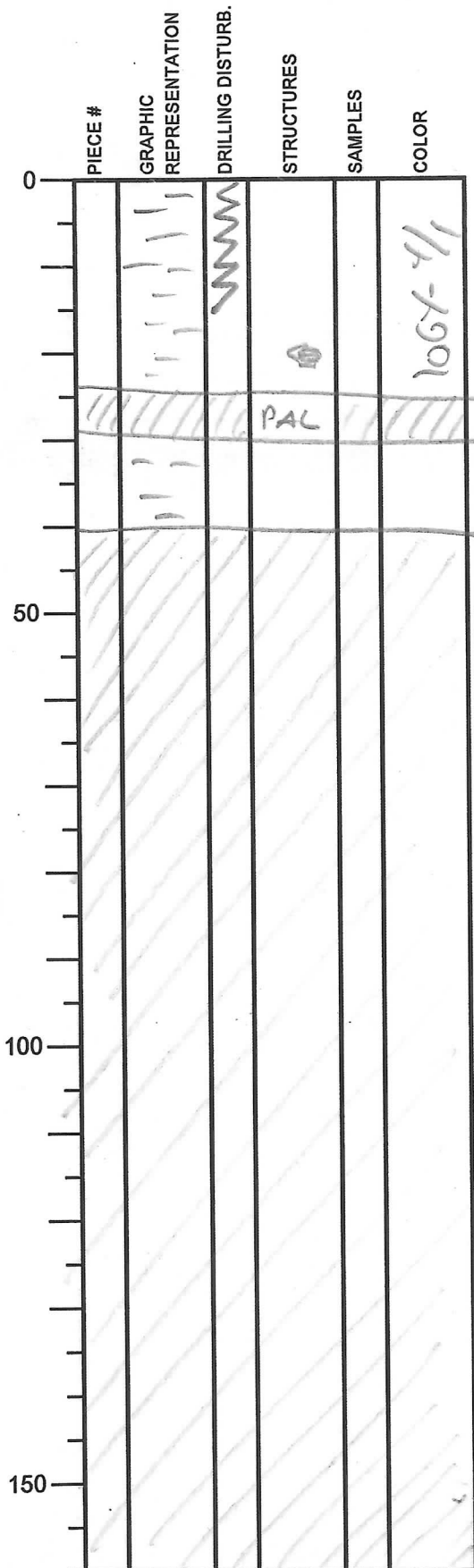
OBSERVER: *J.C.*

Dark greenish gray clay with a number of thin sand layers, frequent color mottling and patches of ash.

Hemipelagic siltstone, moderately bioturbated, with a number of thin tubular sands.

# Integrated Ocean Drilling Program Visual Core Description

NO. 298  
 DATE: 21/12/2010  
 EXP.: 333  
 SITE/HOLE: COOLIC  
 CORE: 2H  
 SECTION: CC  
 TOP DEPTH (m CSF):



SECTION DESCRIPTION

OBSERVER: JCL

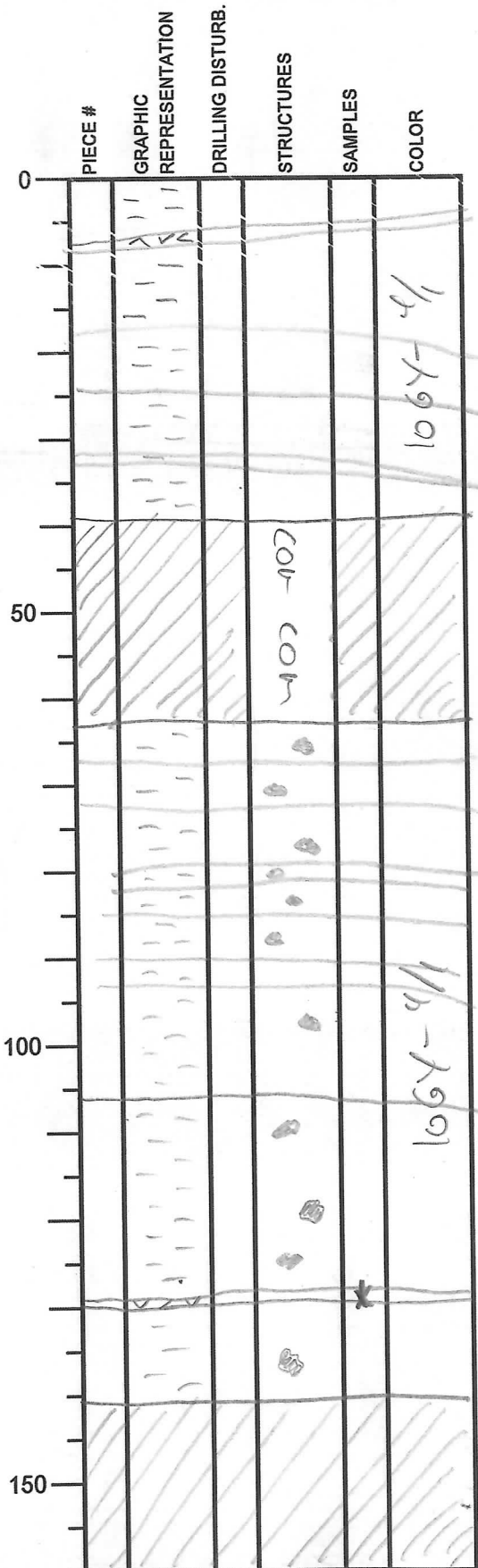
hemipelagic sediments,  
moderately disturbed.

EOC = 40cm

# Integrated Ocean Drilling Program

## Visual Core Description

NO. 299  
 DATE: 2/12/2010  
 EXP.: 333  
 SITE/HOLE: C0011C  
 CORE: 3#  
 SECTION: 01  
 TOP DEPTH (m CSF):



SECTION DESCRIPTION

OBSERVER: JAL

Ash layer, black

1/2-1991

COR-COM

1/2-1991

Dark greenish gray clay with a number of thin sand layers and two ash layers

of terrigenous clay including thin tubularitic sand and two layers of ash

Ash layer, light gray SS = 129 cm (ash)

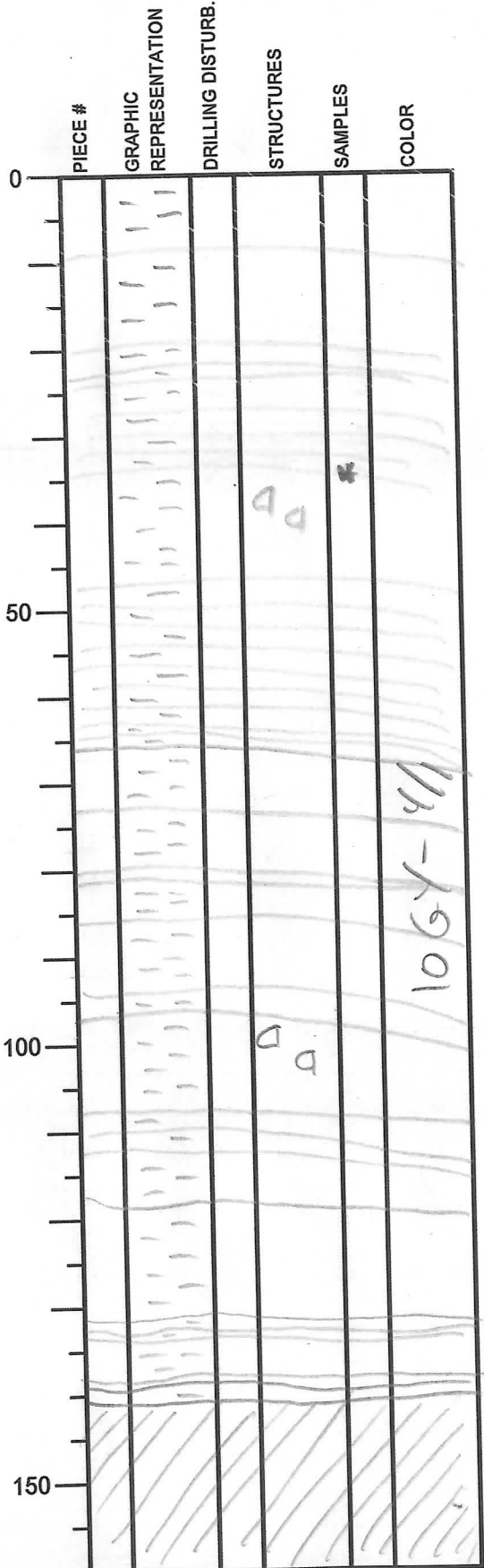
Slightly - moderately bioturbated

EOC = 141 cm

# Integrated Ocean Drilling Program

## Visual Core Description

NO. 300  
 DATE: 4/12/2010  
 EXP.: 333  
 SITE/HOLE: C0011C  
 CORE: 314  
 SECTION: 02  
 TOP DEPTH (m CSF):



SECTION DESCRIPTION

OBSERVER: *JAL*

SS = 32 cm (volcaniclastic sand/silt)

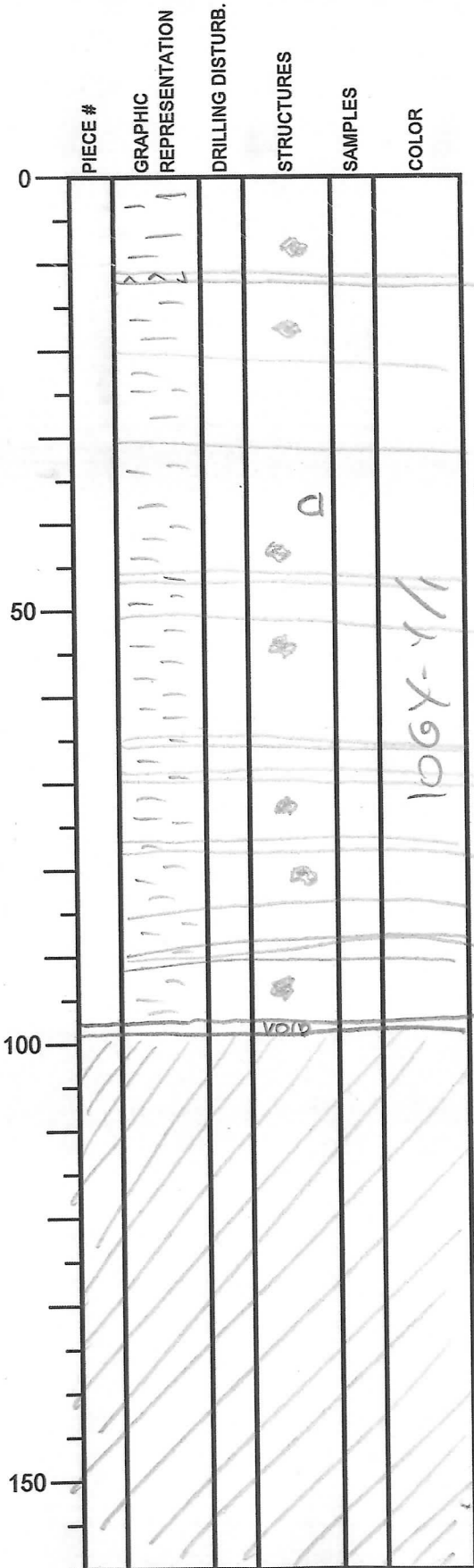
Dark greenish gray clay with a number of thin sand/silt layers

Henipalgic clay including thin turbidite sand/silt. The clay is slightly - moderately bioturbated.

EOC = 141 cm

# Integrated Ocean Drilling Program Visual Core Description

NO. 301  
 DATE: 2/12/2010  
 EXP.: 333  
 SITE/HOLE: C0011C  
 CORE: 3H  
 SECTION: 3  
 TOP DEPTH (m CSF):



## SECTION DESCRIPTION

OBSERVER: *Jal*

Dark greenish gray clay with a number of thin sand/silt layers, the clay comprise color mottling and patches of ash

⇒ Slightly - moderately undisturbed micropelagic clay including turbidite sand/silt.

# Integrated Ocean Drilling Program

## Visual Core Description

NO. 302  
 DATE: 21/12/2010  
 EXP.: 333  
 SITE/HOLE: C0011C  
 CORE: 3H  
 SECTION: 4  
 TOP DEPTH (m CSF):

	PIECE #	GRAPHIC REPRESENTATION	DRILLING DISTURB.	STRUCTURES	SAMPLES	COLOR
0						1064-1/1
50						1064-1/1
100						1064-1/1
150						1064-1/1

SECTION DESCRIPTION

OBSERVER: *Jal*

Hemipelagic clay including  
 thin layers of turbiditic  
 sand/silt

EOC = 29/cm



# Integrated Ocean Drilling Program

## Visual Core Description

NO. 303  
 DATE: 2/12/2010  
 EXP.: 333  
 SITE/HOLE: COO11C  
 CORE: 3H  
 SECTION: 5  
 TOP DEPTH (m CSF):

	PIECE #	GRAPHIC REPRESENTATION	DRILLING DISTURB.	STRUCTURES	SAMPLES	COLOR
0				A		1/2-X001
50		/ / / / /				
100		/ / / / /				
150		/ / / / /				

**SECTION DESCRIPTION**

Pack of ash

Hemipelagic clay including thin layers of bioturbated sand/silt

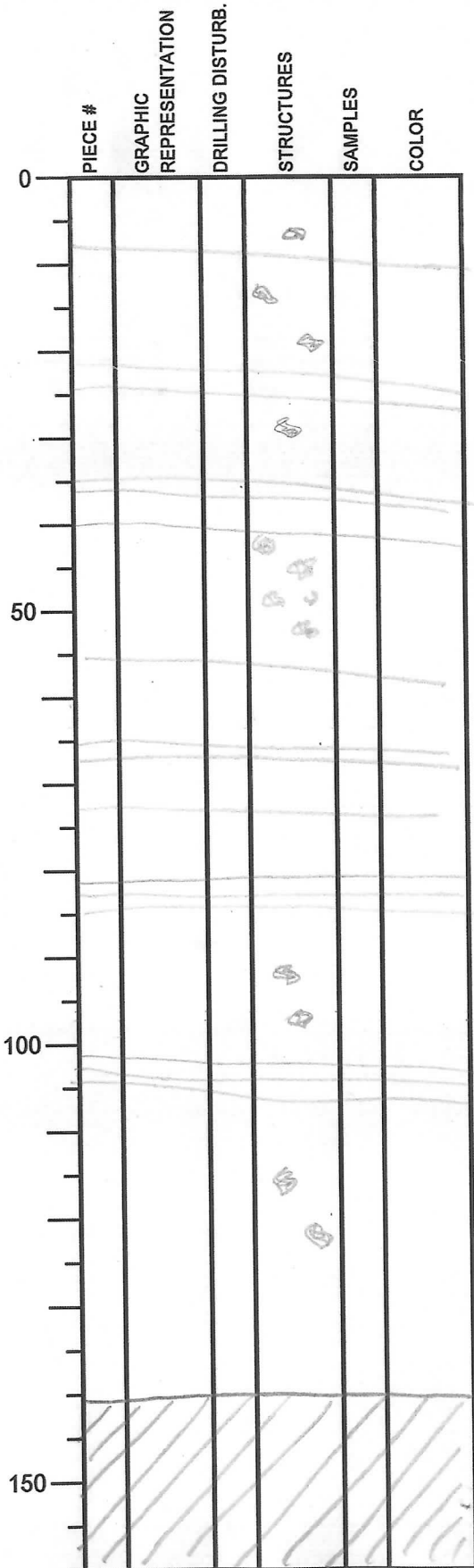
OBSERVER: *YAL*

COO-22 CL

# Integrated Ocean Drilling Program

## Visual Core Description

NO. 304  
 DATE: 2/12/2010  
 EXP.: 333  
 SITE/HOLE: COO11C  
 CORE: 3H  
 SECTION: 6  
 TOP DEPTH (m CSF):



SECTION DESCRIPTION

OBSERVER:

Patches of ash in various forms

Dark greenish gray clay with a number of thin sand/silt layers

Hemipelagic clay including thin ferruginous sand/silt. The clay is moderately bioturbated.

EOC = 140.5 cm

# Integrated Ocean Drilling Program

## Visual Core Description

NO. 305  
 DATE: 21/12/2010  
 EXP.: 333  
 SITE/HOLE: COO11C  
 CORE: 3H  
 SECTION: 7  
 TOP DEPTH (m CSF):

	PIECE #	GRAPHIC REPRESENTATION	DRILLING DISTURB.	STRUCTURES	SAMPLES	COLOR
0		-				
50		-				log 4/1
100		-		ash $\Delta$	*	log 3/1
150		-		mud chert	*	log 4/1

SECTION DESCRIPTION

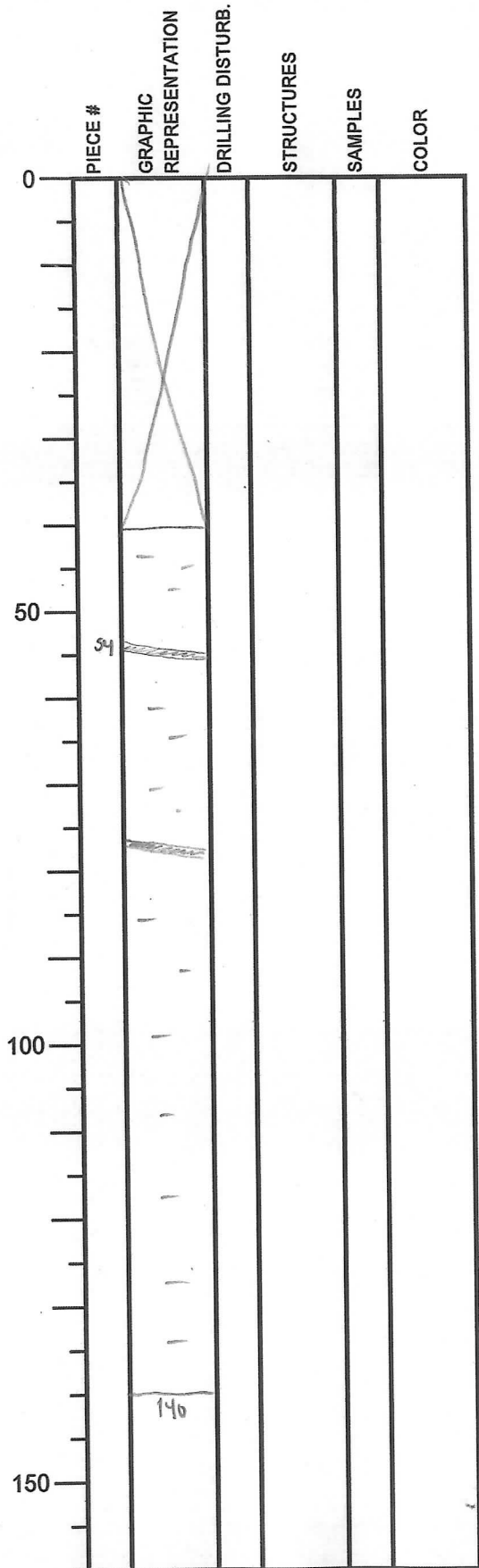
OBSERVER:

Silty clay, with a < 4 cm interval of volcanic ash.

SS= 80 cm (hemipelagic mud)

# Integrated Ocean Drilling Program Visual Core Description

NO. 306  
 DATE: 21/12/2010  
 EXP.: 333  
 SITE/HOLE: Co06A  
 CORE: 3H  
 SECTION: 3  
 TOP DEPTH (m CSF):



SECTION DESCRIPTION

OBSERVER:

*Silty mud. Some intercalated  
sh laminae.*

# Integrated Ocean Drilling Program Visual Core Description

NO. 307  
 DATE: 21/12/2010  
 EXP.: 333  
 SITE/HOLE: Coo11A  
 CORE: 3H  
 SECTION: 10  
 TOP DEPTH (m CSF):

PIECE #	GRAPHIC REPRESENTATION	DRILLING DISTURB.	STRUCTURES	SAMPLES	COLOR
0					106y 4/1
27				27 106y 3/1	(SS=25cm)
50					106y 4/1
63			Thin ash stone & ash		
65					
92					
97					
113					
150					

SECTION DESCRIPTION

OBSERVER:

Silty clay w intercalated  
 volcaniclastic sand and  
 ash.

# Integrated Ocean Drilling Program Visual Core Description

NO. 308  
 DATE: 21 / 12 / 2010  
 EXP.: 333  
 SITE/HOLE: COO11A  
 CORE: 34  
 SECTION: CC  
 TOP DEPTH (m CSF):

PIECE #	GRAPHIC REPRESENTATION	DRILLING DISTURB.	STRUCTURES	SAMPLES	COLOR	SECTION DESCRIPTION
0						
9	-				1064 3/1	Sandy clay
13	X				X	
23	.			**	N8	ash
	-				1074 4/2	Volcaniclastic sand
	-				1064 4/1	Silty clay
	-					(SS = 16 cm)
40 cm						
50						
100						
150						

OBSERVER: