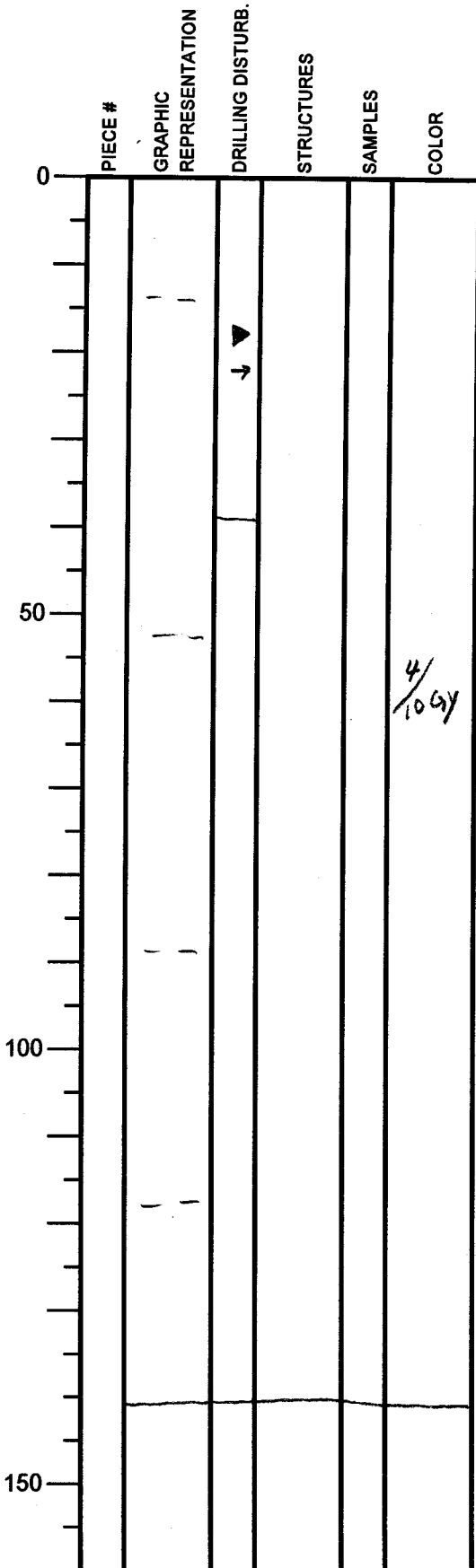


Integrated Ocean Drilling Program

Visual Core Description

NO. 771
 DATE: 31/12/2010
 EXP.: 333
 SITE/HOLE: C0012D
 CORE: 2H
 SECTION: 01
 TOP DEPTH (m CSF):



SECTION DESCRIPTION

OBSERVER: S Gao

Silty clay, with
 green and brown layers
 of ash-related materials.
 The top 40cm was heavily
 disturbed by drilling.

Integrated Ocean Drilling Program

Visual Core Description

NO. 772
 DATE: 3/12/2010
 EXP.: 335
 SITE/HOLE: C0012D
 CORE: 2H
 SECTION: 02
 TOP DEPTH (m CSF):

	PIECE #	GRAPHIC REPRESENTATION	DRILLING DISTURB.	STRUCTURES	SAMPLES	COLOR
0						
50						4/ 10GY
100						
150						

SECTION DESCRIPTION

Silty clay, with
 green/brown layers;
 Distorted beds.

OBSERVER: J Gan

Integrated Ocean Drilling Program Visual Core Description

NO. 773
 DATE: 3/12/2010
 EXP.: 333
 SITE/HOLE: C0012D
 CORE: 2H
 SECTION: 4
 TOP DEPTH (m CSF):

OBSERVER: SGao

	PIECE #	GRAPHIC REPRESENTATION	DRILLING DISTURB.	STRUCTURES	SAMPLES	COLOR
0		X				
50		*			4/1064	
100						
150						

SECTION DESCRIPTION

The same as the last section.

- SS (57cm)

Integrated Ocean Drilling Program Visual Core Description

NO. 774
 DATE: 3/12/2010
 EXP.: 333
 SITE/HOLE: C0012D
 CORE: 2H
 SECTION: 5
 TOP DEPTH (m CSF):

	PIECE #	GRAPHIC REPRESENTATION	DRILLING DISTURB.	STRUCTURES	SAMPLES	COLOR
0						
50						4/106y
100						
150						

SECTION DESCRIPTION

The same as the last section, with colorful deformation patterns.

OBSERVER:

Integrated Ocean Drilling Program

Visual Core Description

NO. 775
 DATE: 3/11/2010
 EXP.: 333
 SITE/HOLE: C0012D
 CORE: 214
 SECTION: 6
 TOP DEPTH (m CSF):

OBSERVER: SGao

	PIECE #	GRAPHIC REPRESENTATION	DRILLING DISTURB.	STRUCTURES	SAMPLES	COLOR
0						
50						4 /1064
100				(S)		Ash clast
150						

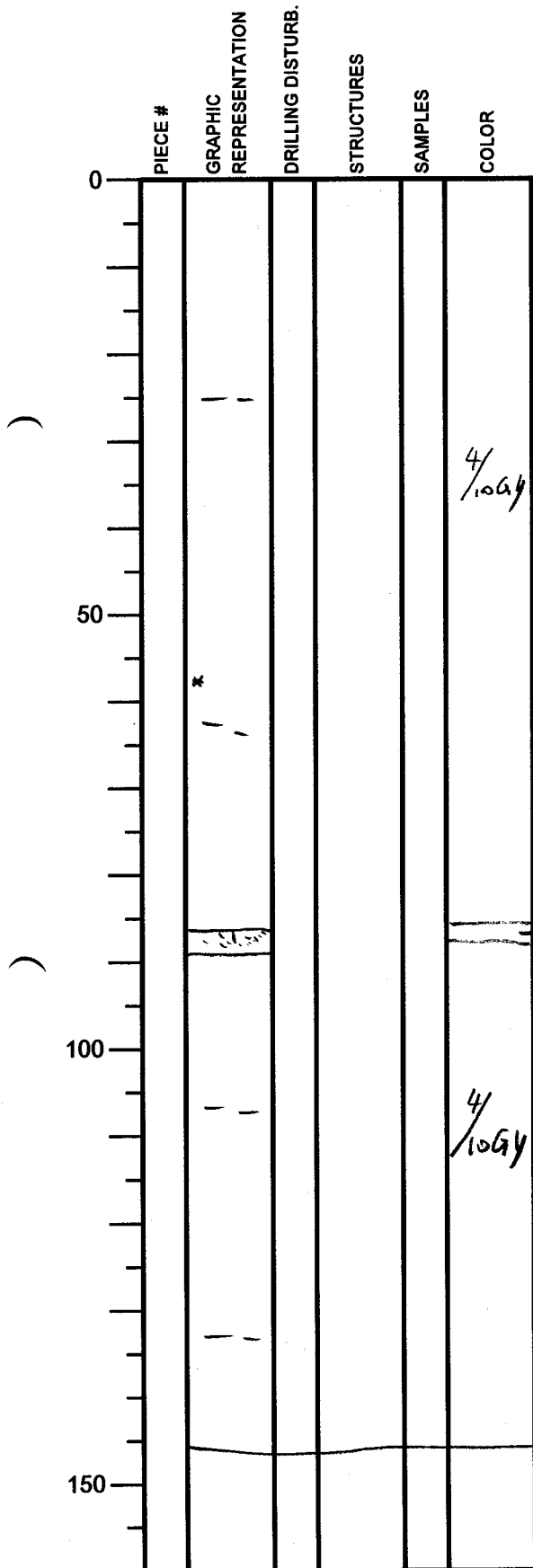
SECTION DESCRIPTION

The same as the last section.

Integrated Ocean Drilling Program

Visual Core Description

NO. 776
 DATE: 3/12/2010
 EXP.: 333
 SITE/HOLE: C0012D
 CORE: 2H
 SECTION: 7
 TOP DEPTH (m CSF):



SECTION DESCRIPTION

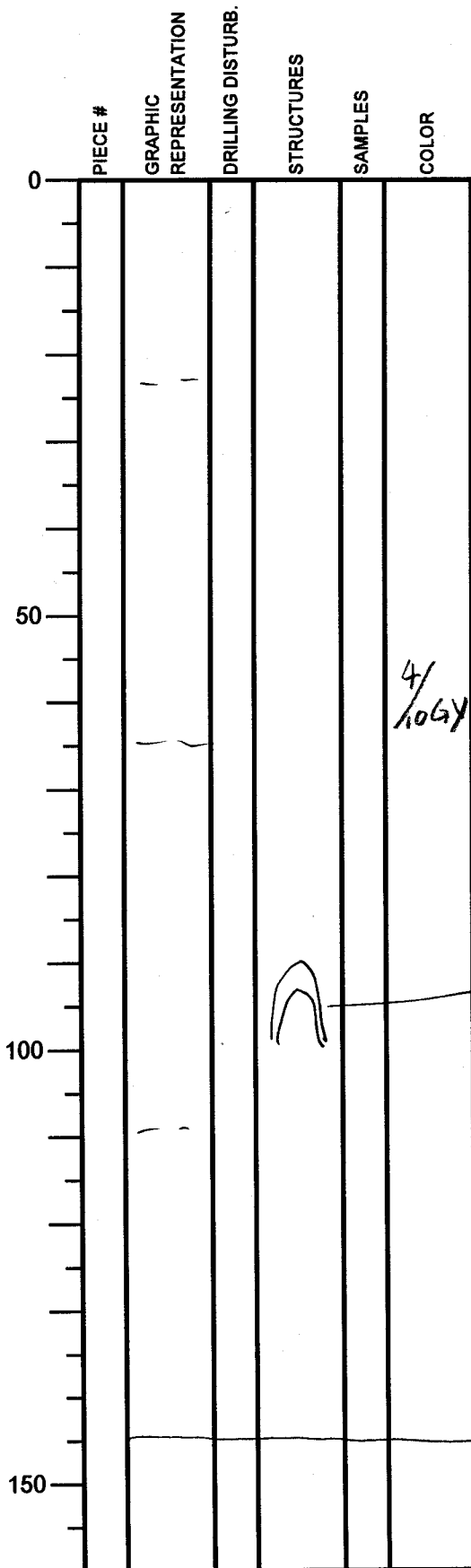
OBSERVER: SGao

Silty clay, with
 the same features
 as 2H-02. An ash
 layer is present
 in 86.5 ~ 88.5 cm
 (consisting of silts).

Integrated Ocean Drilling Program

Visual Core Description

NO. 777
 DATE: 31/12/2010
 EXP.: 333
 SITE/HOLE: C0012D
 CORE: 2H
 SECTION: 8
 TOP DEPTH (m CSF):



SECTION DESCRIPTION

OBSERVER: SGao

The same as
 the last section,
 but with a more colorful
 pattern of deformation
 features.

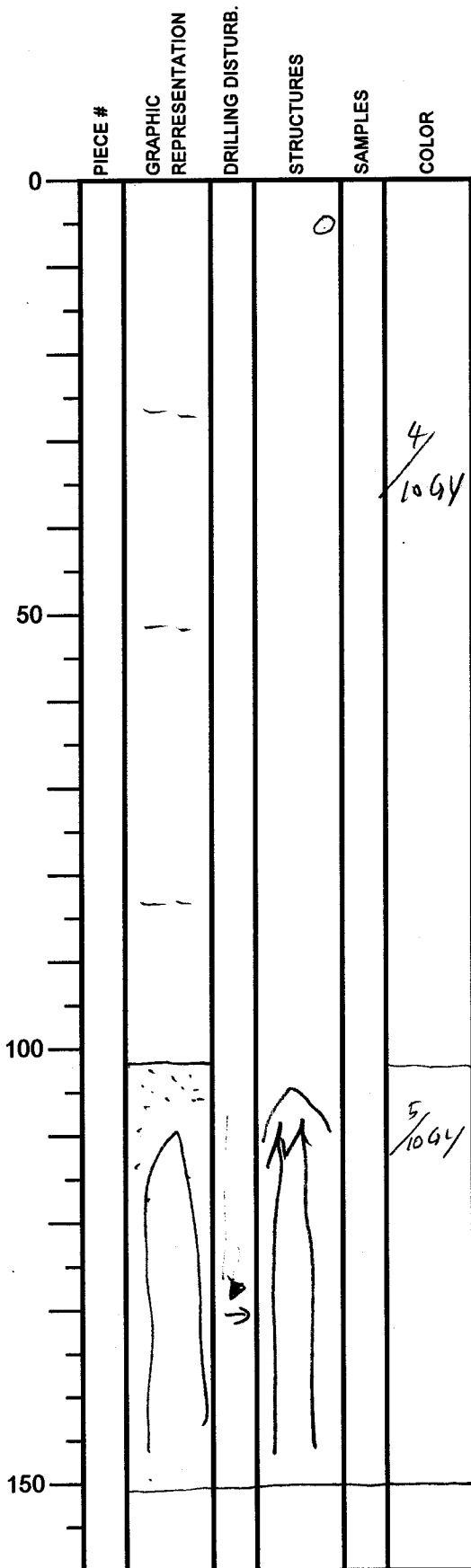
Large bend.

Integrated Ocean Drilling Program

Visual Core Description

NO. 778
 DATE: 3/12/2010
 EXP.: 333
 SITE/HOLE: C0012D
 CORE: 2H
 SECTION: 9
 TOP DEPTH (m CSF):

OBSERVER: S Gao



SECTION DESCRIPTION




Silty clay,
 the same as
 the last section.
 A nodule (1.5cm
 in diameter) at
 6-7cm.

Ash sands, destroyed
 by "flow in" material,
 otherwise may be
 distributed towards
 the end of the section.

Integrated Ocean Drilling Program

Visual Core Description

NO. 779
 DATE: 3/12/2010
 EXP.: 733
 SITE/HOLE: C0012D
 CORE: 2H
 SECTION: CC-AA
 TOP DEPTH (m CSF):

	PIECE #	GRAPHIC REPRESENTATION	DRILLING DISTURB.	STRUCTURES	SAMPLES	COLOR
0						?
50						
100						
150						

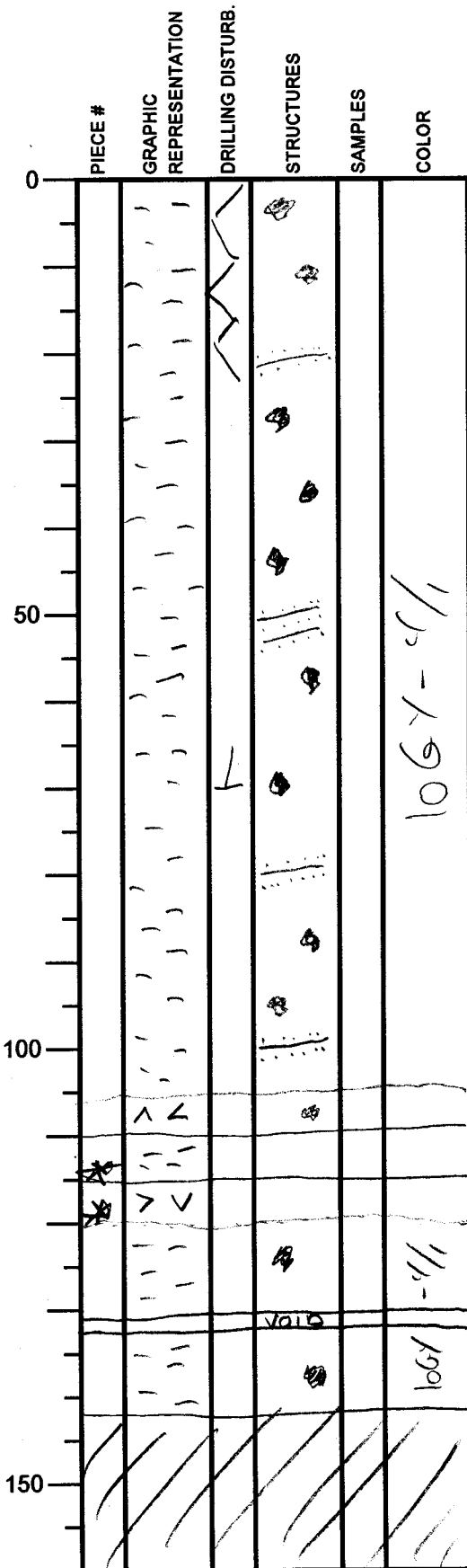
SECTION DESCRIPTION

The section is contaminated by flow-in material; otherwise, the material may be ash sands.

OBSERVER: S. Gao

Integrated Ocean Drilling Program Visual Core Description

NO. 780
 DATE: 11/2011
 EXP.: 333
 SITE/HOLE: C00120
 CORE: 3H
 SECTION: 1
 TOP DEPTH (m CSF):



SECTION DESCRIPTION

OBSERVER: *JEL*

Dark greenish gray clay
 with some color banding (grey-)
 and profound color mottling
 → heavily disturbed

Two layers of ash over- and
 under lying a dark grayish
 yellow clay layer.

106Y-6/1
 2.5Y-7/2 Dark grayish yellow
 106Y-6/1

* Smear slide at 114 cm and
 119 cm

EOC = 142 cm

Integrated Ocean Drilling Program

Visual Core Description

NO. 781
 DATE: 11/1/2011
 EXP.: 333
 SITE/HOLE: C00120
 CORE: 34
 SECTION: 2
 TOP DEPTH (m CSF):

	PIECE #	GRAPHIC REPRESENTATION	DRILLING DISTURB.	STRUCTURES	SAMPLES	COLOR
0						
50	*		L			10G-Y-4/1
100				ESUR COW CON		
150						

SECTION DESCRIPTION

OBSERVER:

JAL

Same as above

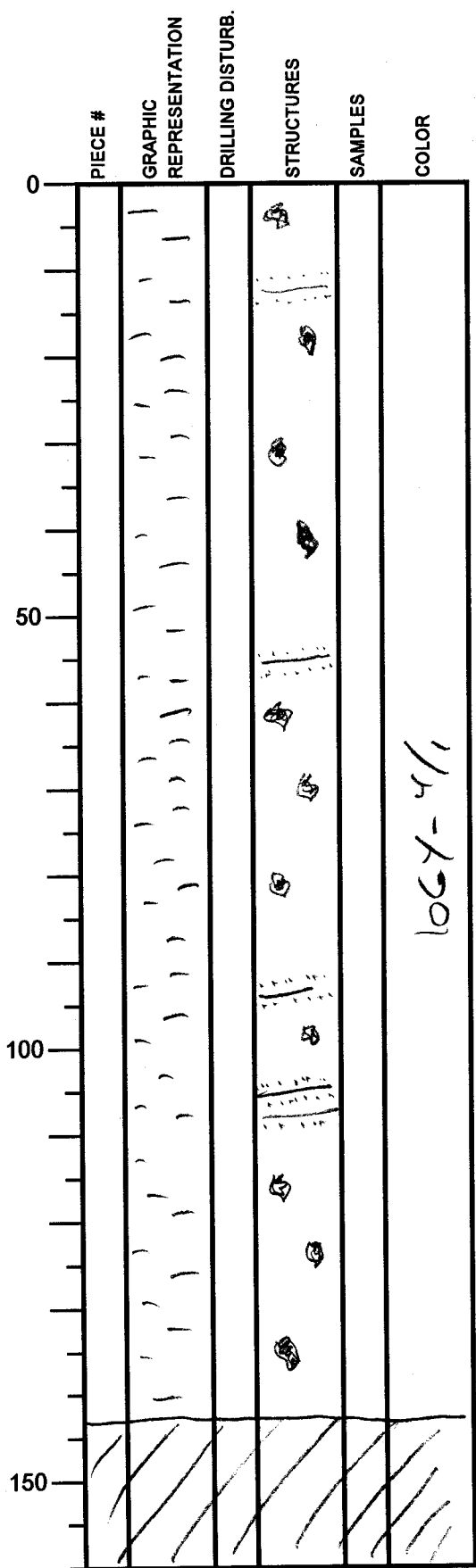
* Smear slide at 30 cm

EOC = 141.5 cm

Integrated Ocean Drilling Program

Visual Core Description

NO. 782
 DATE: 11/2011
 EXP.: 333
 SITE/HOLE: C00121D
 CORE: 346
 SECTION: 4
 TOP DEPTH (m CSF):



SECTION DESCRIPTION

OBSERVER:

Jal

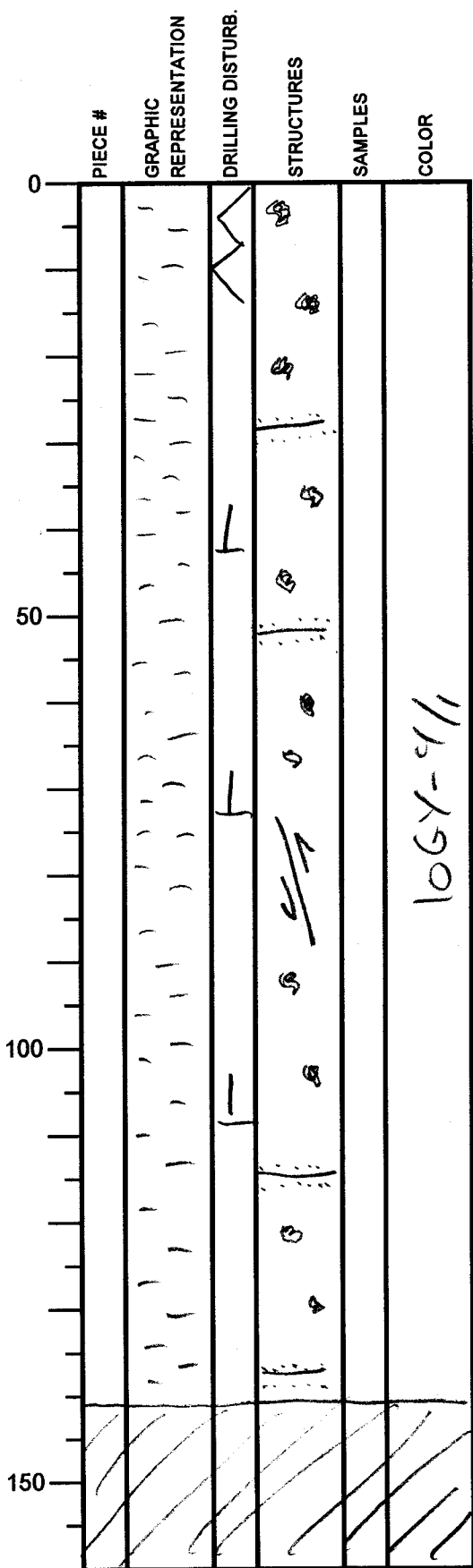
Same as above

EOC = 143m

Integrated Ocean Drilling Program

Visual Core Description

NO. 783
 DATE: 1/1/2011
 EXP.: 333
 SITE/HOLE: C00120
 CORE: 3H
 SECTION: 5
 TOP DEPTH (m CSF):



SECTION DESCRIPTION

OBSERVER: *Yan L*

Same as above

Small fault - offset of bedding / notching

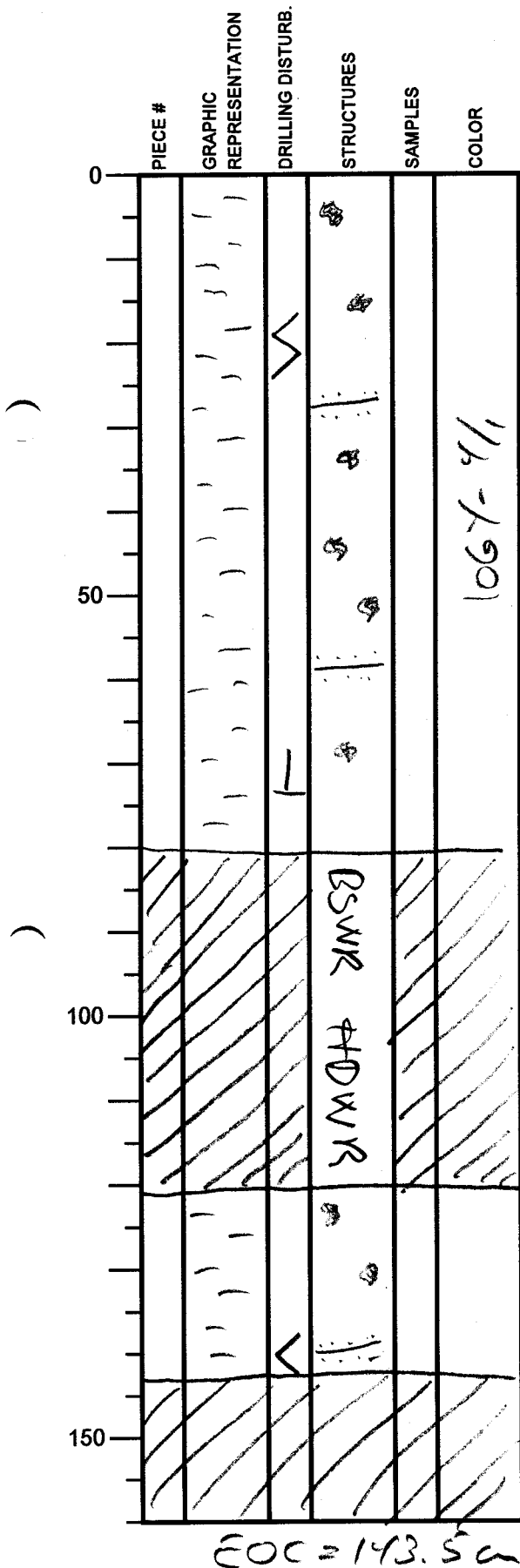
106X-911

EOC = 141m

Integrated Ocean Drilling Program

Visual Core Description

NO. 784
 DATE: 11/20/11
 EXP.: 333
 SITE/HOLE: C00/20
 CORE: 34
 SECTION: 6
 TOP DEPTH (m CSF):



SECTION DESCRIPTION

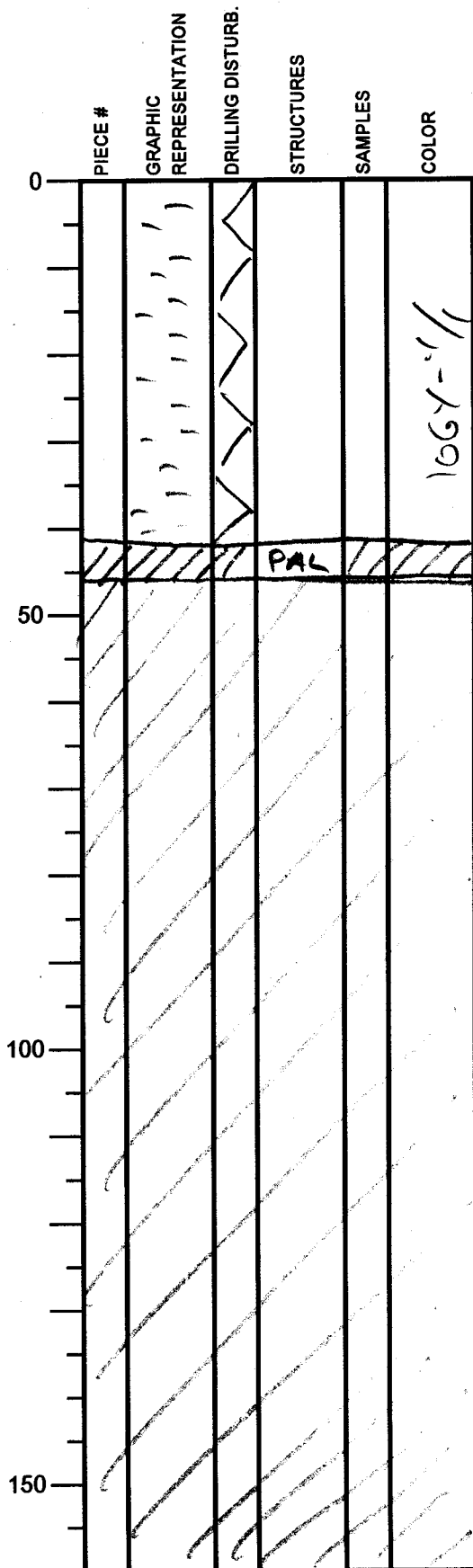
OBSERVER: *yal*

Same as above

Integrated Ocean Drilling Program

Visual Core Description

NO. 785
 DATE: 1/1/20 11
 EXP.: 333
 SITE/HOLE: C0012D
 CORE: 3H
 SECTION: CC
 TOP DEPTH (m CSF):



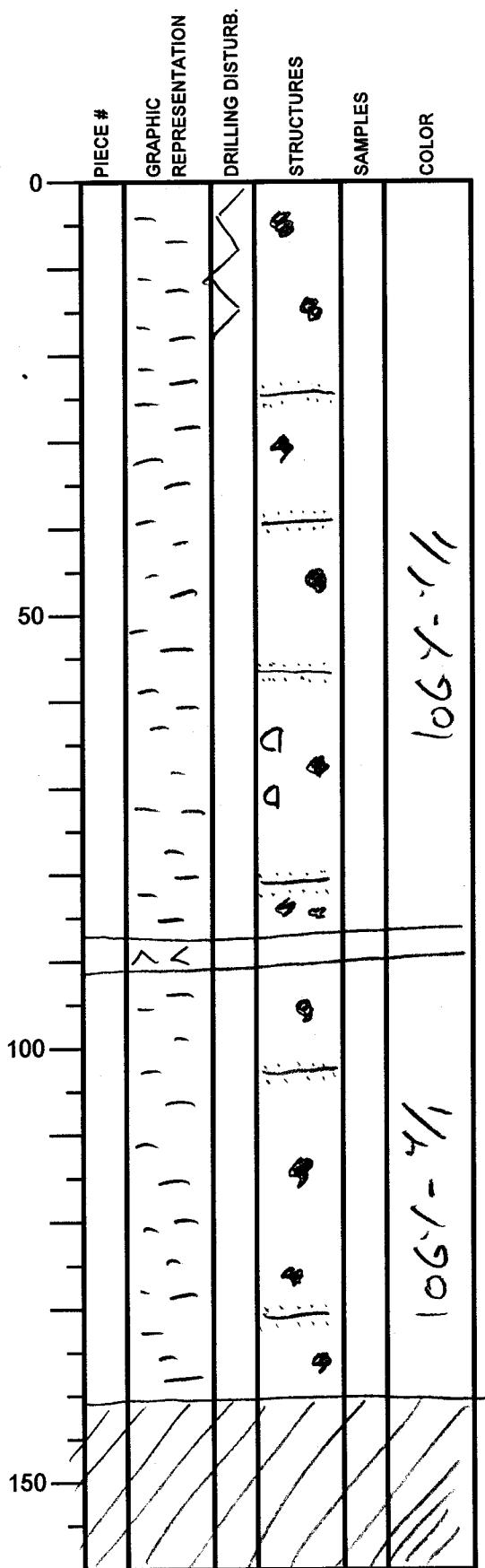
SECTION DESCRIPTION

OBSERVER: *gcl.*

EOC = 16.5 cm

Integrated Ocean Drilling Program Visual Core Description

NO. 786
 DATE: 1/1/2011
 EXP.: 333
 SITE/HOLE: C00120
 CORE: 4H
 SECTION: 1
 TOP DEPTH (m CSF):



SECTION DESCRIPTION

Core disturbance

OBSERVER:

Jal

*Dark greenish gray clay
 with green bands and color
 mottling & profound bioturbation*

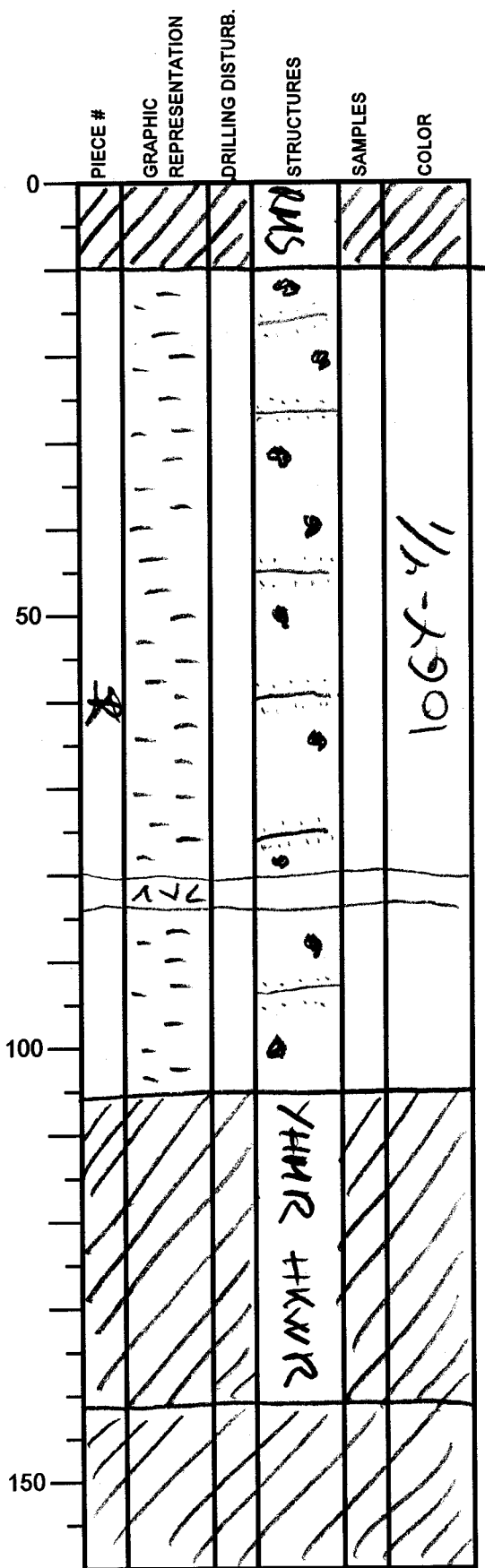
Ash layer, altered ash

EOC = 141 cm

Integrated Ocean Drilling Program

Visual Core Description

NO. 789
 DATE: 11/2011
 EXP.: 333
 SITE/HOLE: C00120
 CORE: 4#
 SECTION: 5
 TOP DEPTH (m CSF):



SECTION DESCRIPTION

OBSERVER: *Jal*

Same as above

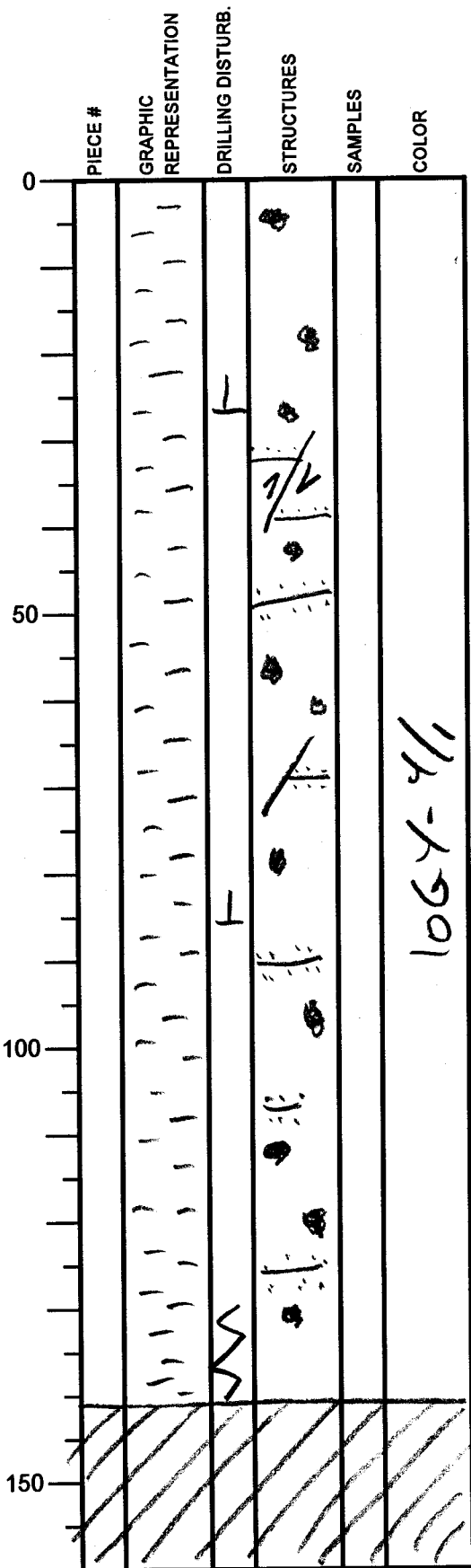
Smear slide of 60cm

EOC = 141.5 cm

Integrated Ocean Drilling Program

Visual Core Description

NO. 790
 DATE: 11/2011
 EXP.: 333
 SITE/HOLE: C0012D
 CORE: 4H
 SECTION: 6
 TOP DEPTH (m CSF):



SECTION DESCRIPTION

OBSERVER: *Ja L.*

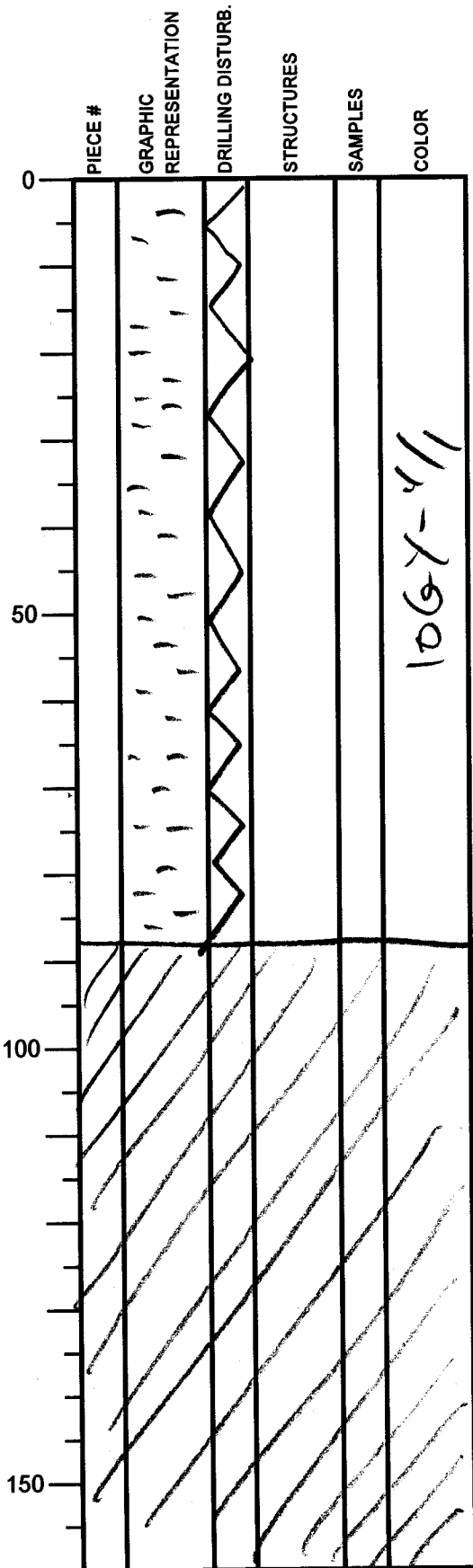
Same as above

1064-4/1

EOC = 141 cm

Integrated Ocean Drilling Program Visual Core Description

NO. 791
 DATE: 11/20/11
 EXP.: 333
 SITE/HOLE: C00120
 CORE: 4H
 SECTION: 2
 TOP DEPTH (m CSF):



SECTION DESCRIPTION

OBSERVER: JEL

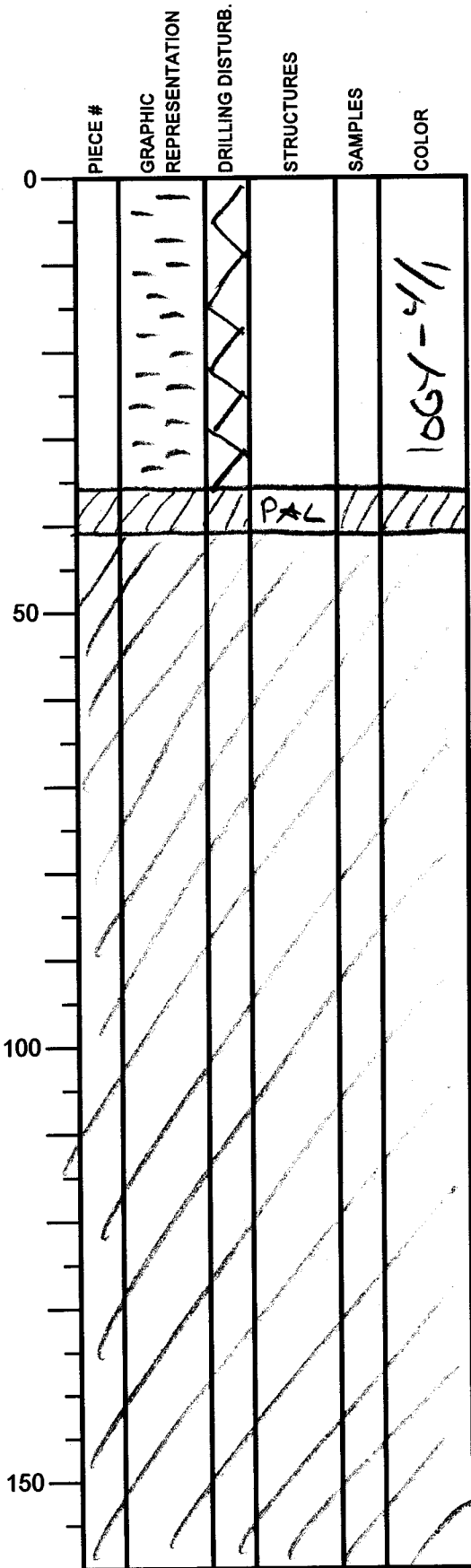
Flow in

1067-4/1

EOC = 88 cm

Integrated Ocean Drilling Program Visual Core Description

NO. 792
 DATE: 1/1/2011
 EXP.: 333
 SITE/HOLE: C0012D
 CORE: 4M
 SECTION: CC
 TOP DEPTH (m CSF):



SECTION DESCRIPTION

Flow in

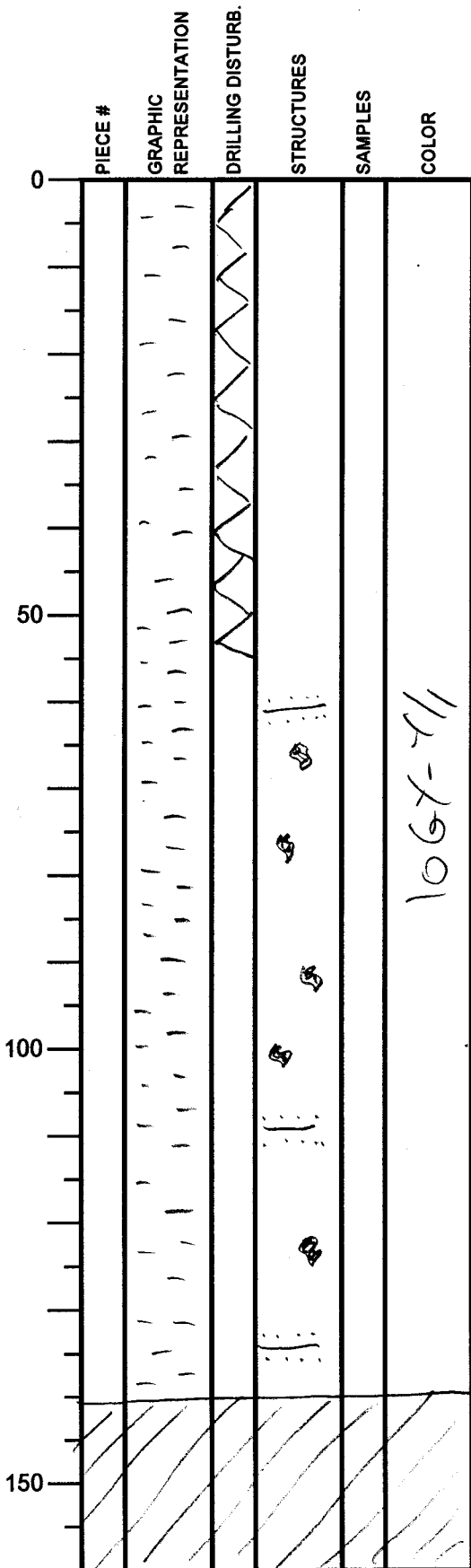
OBSERVER: *JCL*

EOC = 41 cm

Integrated Ocean Drilling Program

Visual Core Description

NO. 793
 DATE: 1/11/2011
 EXP.: 333
 SITE/HOLE: C0012D
 CORE: SH
 SECTION: 1
 TOP DEPTH (m CSF):



SECTION DESCRIPTION

OBSERVER:

J. C.

Dark greenish gray clay
 with green beds and profound
 bioturbation
 - The core is severely
 disturbed in the upper
 ~55 cm.

1067-211

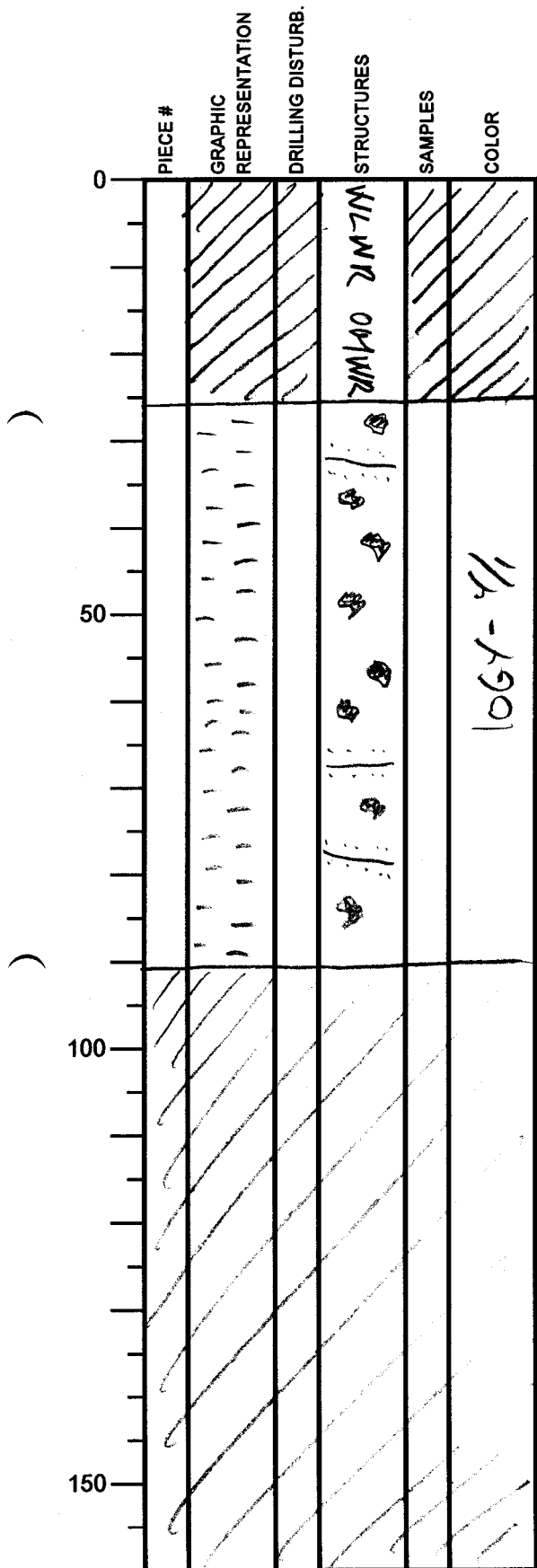
EOC = 141 cm

Integrated Ocean Drilling Program

Visual Core Description

NO. 295
 DATE: 1/1/2011
 EXP.: 333
 SITE/HOLE: C00120
 CORE: 54
 SECTION: 3
 TOP DEPTH (m CSF):

OBSERVER: *JCL*



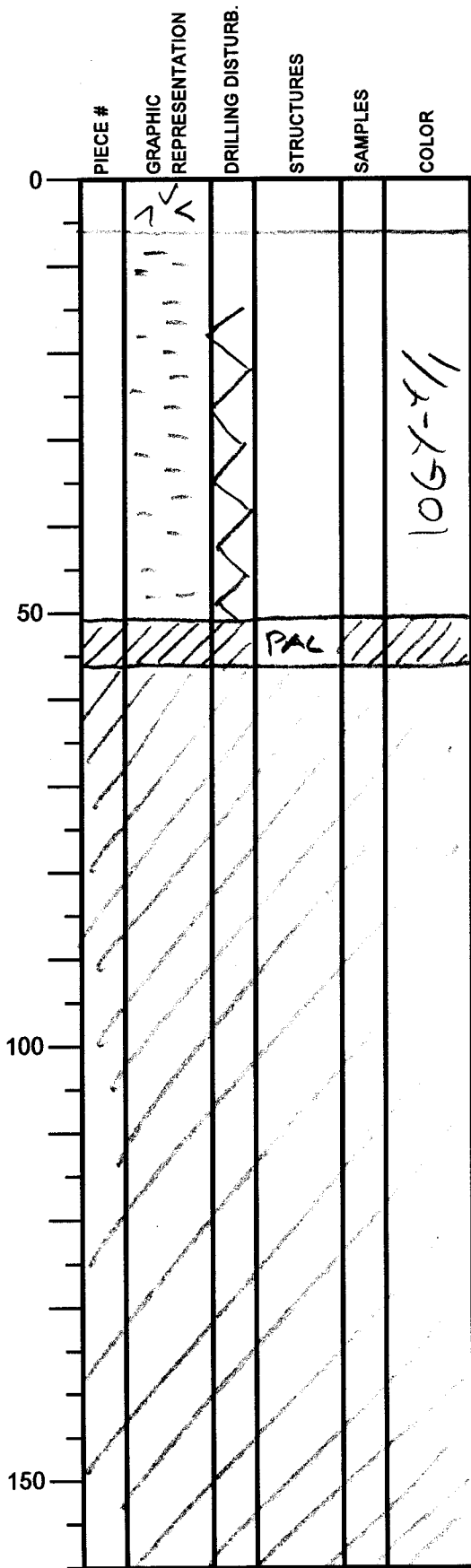
SECTION DESCRIPTION

Same as above

EOC = 910

Integrated Ocean Drilling Program Visual Core Description

NO. 797
 DATE: 1/1/2011
 EXP.: 333
 SITE/HOLE: C00120
 CORE: SH
 SECTION: CC
 TOP DEPTH (m CSF):



SECTION DESCRIPTION
Ash layer

OBSERVER: *[Signature]*

EOC = 56 cm

Integrated Ocean Drilling Program

Visual Core Description

NO. 298
 DATE: 11/1/2011
 EXP.: 333
 SITE/HOLE: C00120
 CORE: 6H
 SECTION: 1
 TOP DEPTH (m CSF):

OBSERVER: S Gao

	PIECE #	GRAPHIC REPRESENTATION	DRILLING DISTURB.	STRUCTURES	SAMPLES	COLOR
0						
50				∞		
100		* 		∞		4/10GY
150						

SECTION DESCRIPTION

Ash clast Silty clay with ash clasts. The cutting surface of the core is no longer as smooth as the previous ones, indicating an increase in ash content? Numerous deformation structures.

Pumice particles, 3-5 mm in diameter.

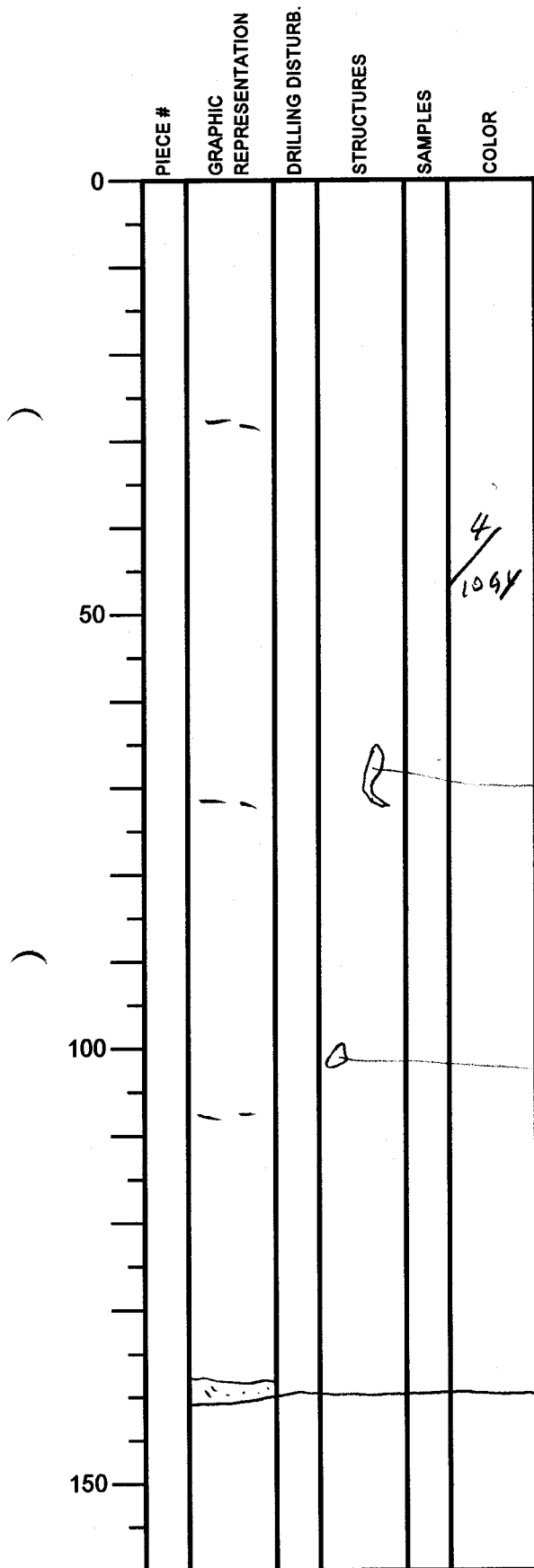
- SS
(84 cm)

Integrated Ocean Drilling Program

Visual Core Description

NO. 799
 DATE: 11/12/07
 EXP.: 333
 SITE/HOLE: C0012D
 CORE: 6H
 SECTION: 2
 TOP DEPTH (m CSF):

OBSERVER: S Gao



SECTION DESCRIPTION

Silty clay, heavily
 deformed, especially
 at 14-120 cm.
 Ash of 2.5 cm (silt-sized)
 at the bottom.

Dark brown ash

Black ash clast.

Integrated Ocean Drilling Program

Visual Core Description

NO. 800
 DATE: 11/120 11
 EXP.: 333
 SITE/HOLE: C0012D
 CORE: 6H
 SECTION: 3
 TOP DEPTH (m CSF):

	PIECE #	GRAPHIC REPRESENTATION	DRILLING DISTURB.	STRUCTURES	SAMPLES	COLOR
0						y /104y
50						
100						
150						

SECTION DESCRIPTION

silt-sized ash at the top (0.5cm thick).

silty clay, deformed.

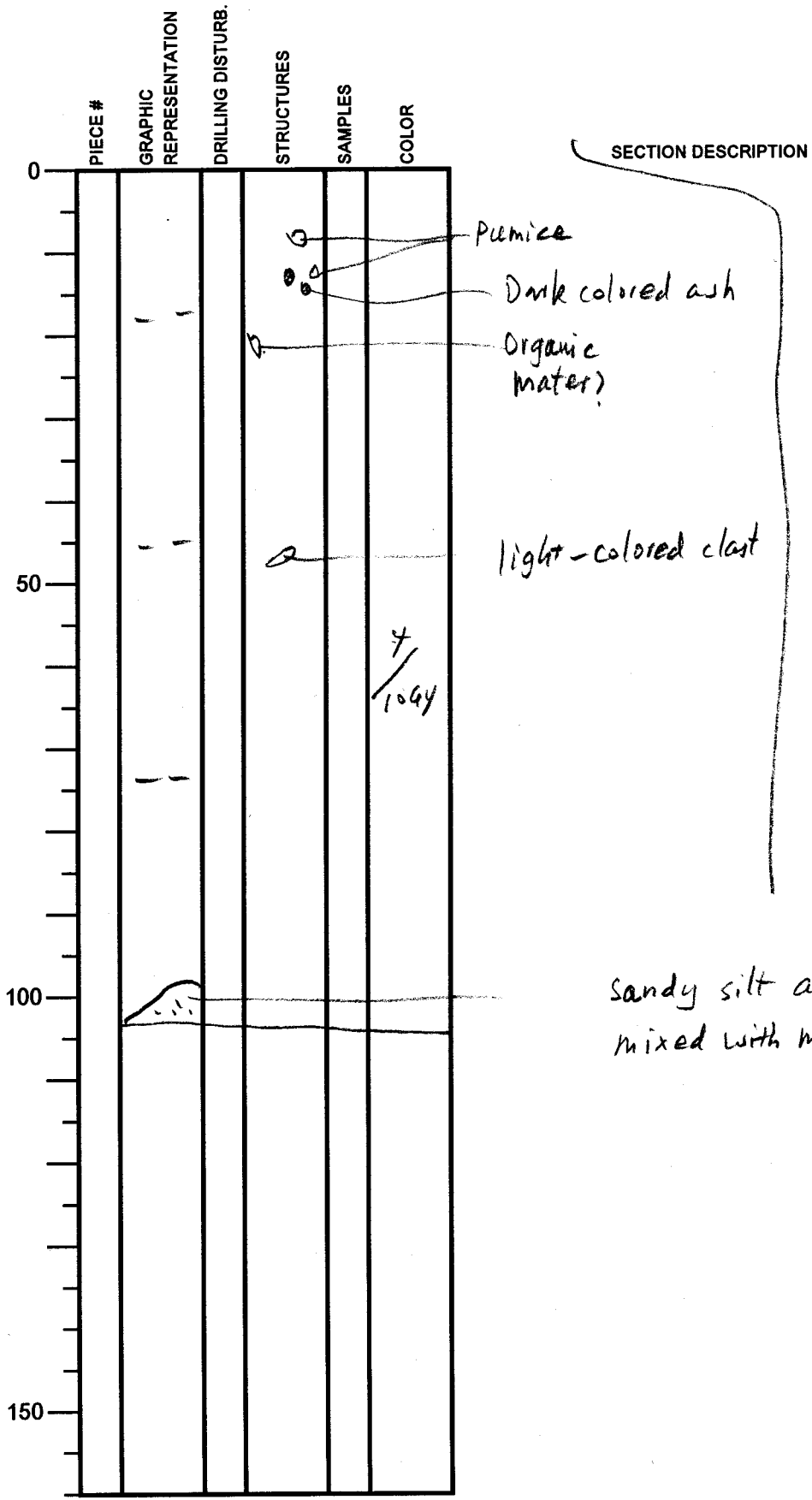
OBSERVER: S Gao

Integrated Ocean Drilling Program

Visual Core Description

NO. 801
 DATE: 11/20/11
 EXP.: 333
 SITE/HOLE: C0012D
 CORE: 6H
 SECTION: 4
 TOP DEPTH (m CSF):

OBSERVER: S Gao



Integrated Ocean Drilling Program

Visual Core Description

NO. 802
 DATE: 11/120 11
 EXP.: 333
 SITE/HOLE: C0012D
 CORE: 6H
 SECTION: 5
 TOP DEPTH (m CSF):

	PIECE #	GRAPHIC REPRESENTATION	DRILLING DISTURB.	STRUCTURES	SAMPLES	COLOR
0		*				
50						
100						
150						

SECTION DESCRIPTION

OBSERVER: S Gas

Sand-silt-clay, vol-
 3/10Gy -SS conic materials, with
 (12cm) med clasts.

Silty clay, with deformations.
 Smooth surface.

Integrated Ocean Drilling Program Visual Core Description.

NO. 803
DATE: 11/12011
EXP.: 333
SITE/HOLE: C0012D
CORE: 6H
SECTION: 6
TOP DEPTH (m CSF):

OBSERVER: S Gas

PIECE #	GRAPHIC REPRESENTATION	DRILLING DISTURB.	STRUCTURES	SAMPLES	COLOR
0					
50					
100					
150					

SECTION DESCRIPTION

Silty clay with
"smooth surface" (like
5H core). Deformed.

Integrated Ocean Drilling Program

Visual Core Description

NO. 804
 DATE: 11/1/20 "
 EXP.: 333
 SITE/HOLE: CD012D
 CORE: 6H
 SECTION: 7
 TOP DEPTH (m CSF):

	PIECE #	GRAPHIC REPRESENTATION	DRILLING DISTURB.	STRUCTURES	SAMPLES	COLOR
0						
50		*	▲	↑		4/10gy
100						
150						

SECTION DESCRIPTION

OBSERVER: S Gao

The same as the last section until 26 cm, below which there is "flow in" structure, caused by drilling.

-SS (22cm)

Integrated Ocean Drilling Program

Visual Core Description

NO. 805
 DATE: 11/12011
 EXP.: 333
 SITE/HOLE: C0012D
 CORE: 6H
 SECTION: CC-AA
 TOP DEPTH (m CSF):

	PIECE #	GRAPHIC REPRESENTATION	DRILLING DISTURB.	STRUCTURES	SAMPLES	COLOR
0			▼	↑ ↑		
50		X				
100						
150						

SECTION DESCRIPTION

OBSERVER: SGao

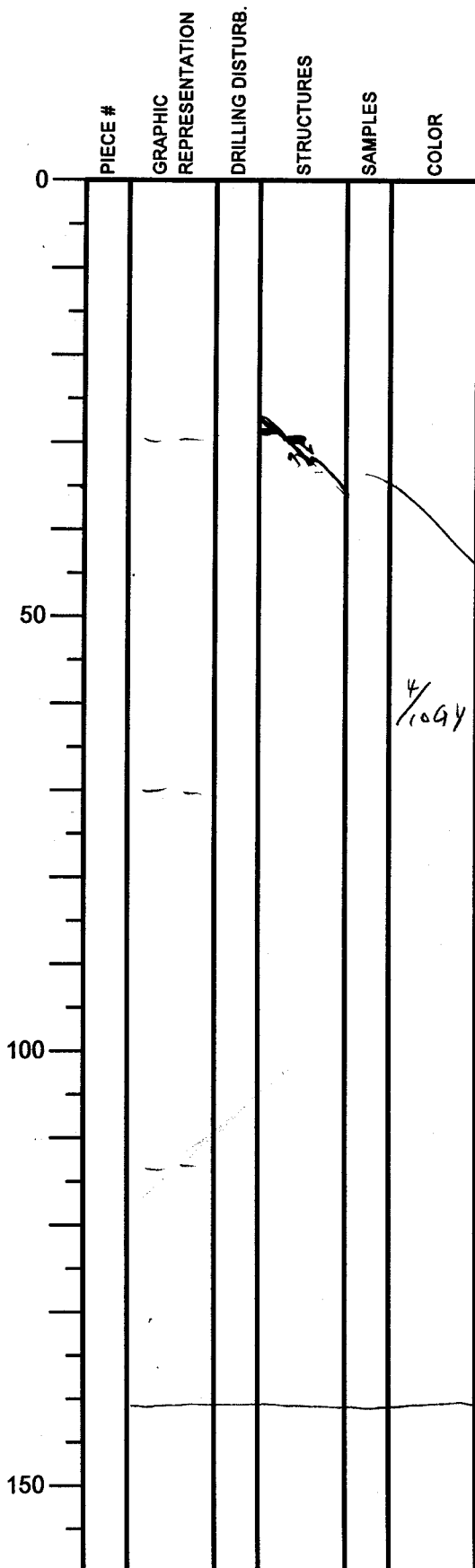
Silty clay, with
 "flowin" structure.

Integrated Ocean Drilling Program

Visual Core Description

NO. 806
 DATE: 11/20/11
 EXP.: 333
 SITE/HOLE: C0012D
 CORE: 7H
 SECTION: 1
 TOP DEPTH (m CSF):

OBSERVER: S Gao



SECTION DESCRIPTION

Silty clay, with
 green/brown layers
 and clasts. There
 are deformation
 and faulting.
 Normal fault (Koroy)

Integrated Ocean Drilling Program

Visual Core Description

NO. 807
 DATE: 1/1/2011
 EXP.: 333
 SITE/HOLE: C0012D
 CORE: 7H
 SECTION: 2
 TOP DEPTH (m CSF):

	PIECE #	GRAPHIC REPRESENTATION	DRILLING DISTURB.	STRUCTURES	SAMPLES	COLOR
0						
50		()				
100		()				
150		X				

SECTION DESCRIPTION

The same as
 7H-01.

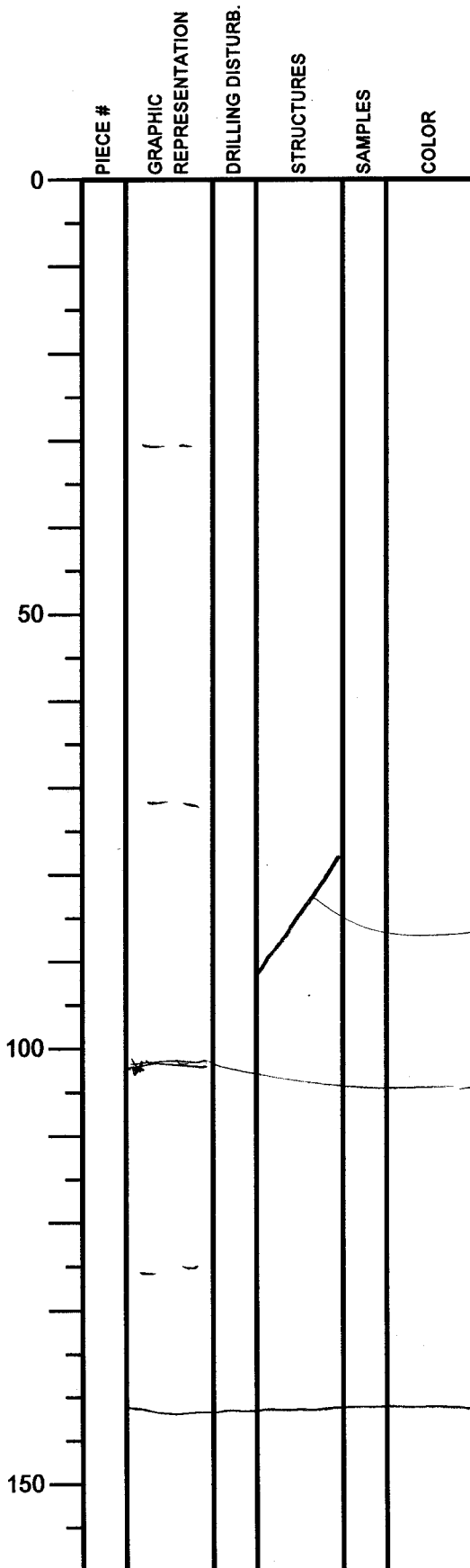
OBSERVER: SGao

4/10/94

Integrated Ocean Drilling Program

Visual Core Description

NO. 808
 DATE: 11/20/11
 EXP.: 333
 SITE/HOLE: C0012D
 CORE: 7H
 SECTION: 4
 TOP DEPTH (m CSF):



SECTION DESCRIPTION

The same as
 7H-01.
 An ash layer
 (thin!) at 103
 cm; a fault
 between 79-94
 cm.

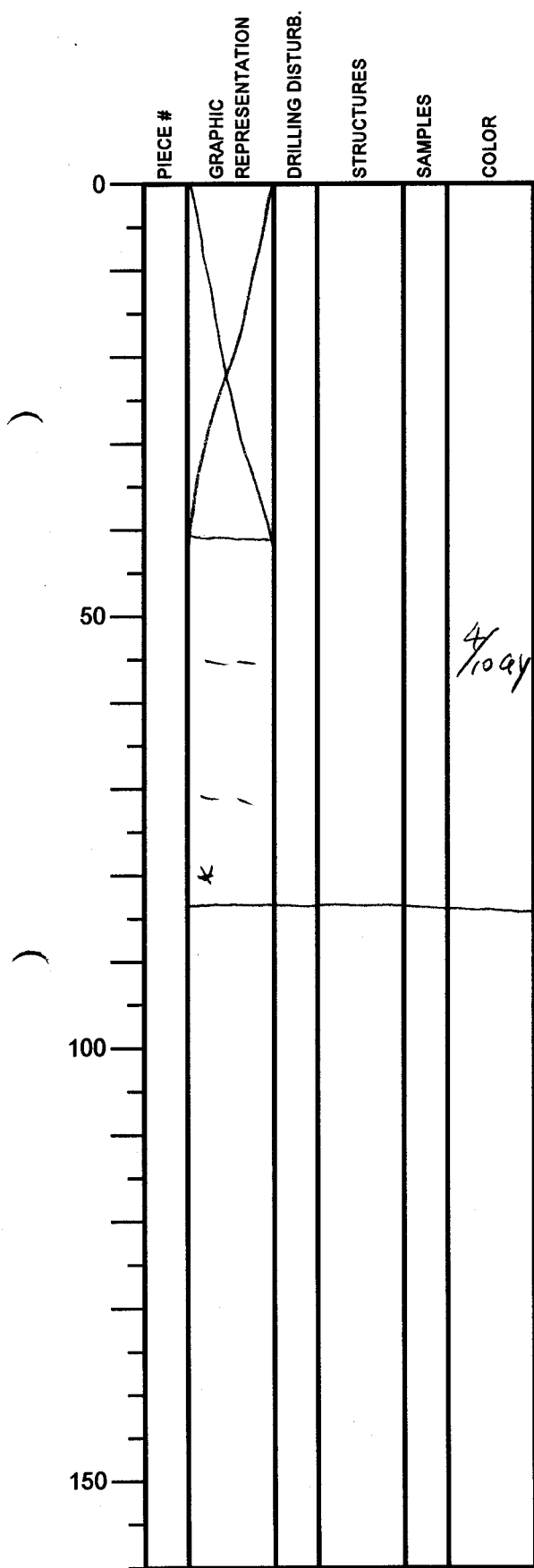
OBSERVER: S Gao

Integrated Ocean Drilling Program

Visual Core Description

NO. 809
 DATE: 11/120 11
 EXP.: 333
 SITE/HOLE: C0012D
 CORE: 7H
 SECTION: 5
 TOP DEPTH (m CSF):

OBSERVER: S Gao



SECTION DESCRIPTION

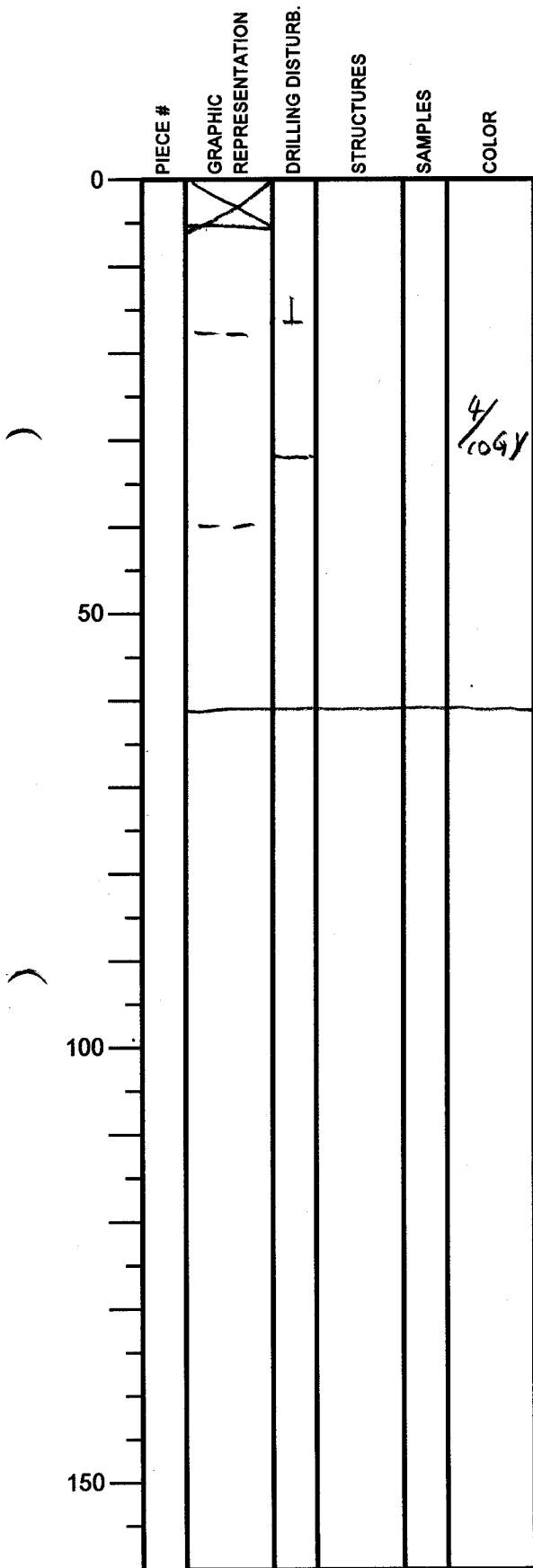
The same as
7H-01.

Integrated Ocean Drilling Program

Visual Core Description

NO. 810
 DATE: 1/1/2011
 EXP.: 333
 SITE/HOLE: C0012D
 CORE: 7H
 SECTION: CC-AA
 TOP DEPTH (m CSF):

OBSERVER: S Gao



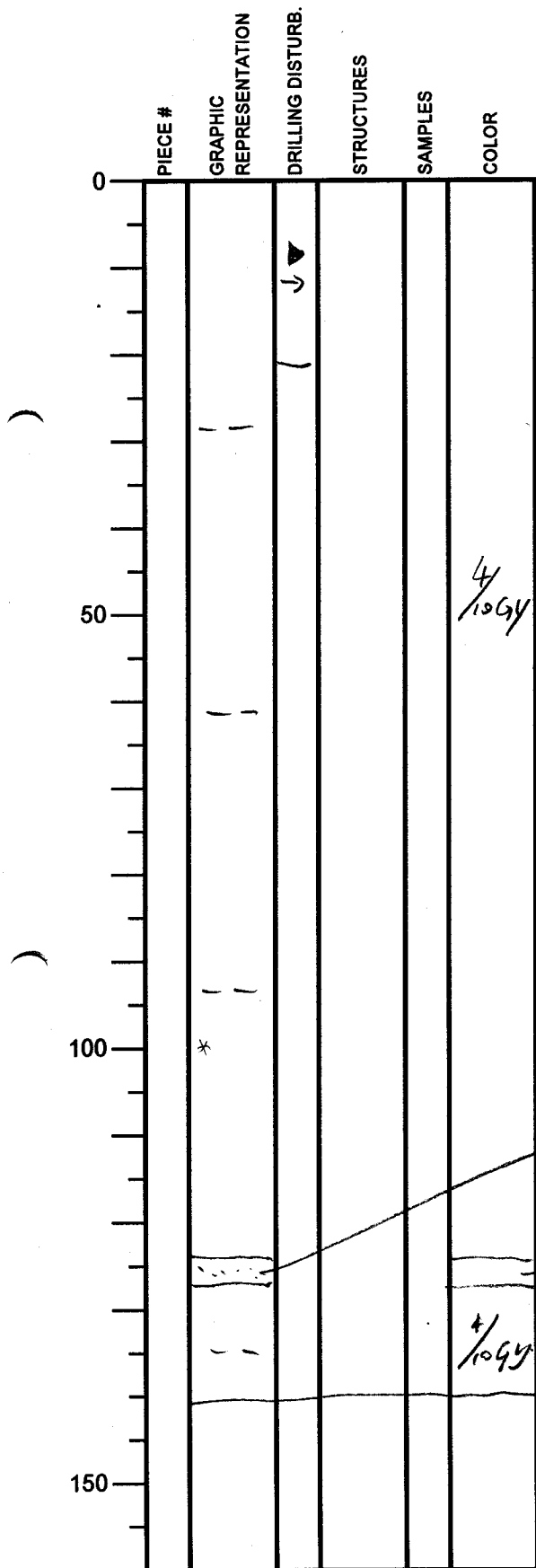
SECTION DESCRIPTION

Silty clay, stiff.
 The lower part
 (below 32cm) is
 influenced by
 "flow in" (?).

Integrated Ocean Drilling Program Visual Core Description

NO. 811
 DATE: 1/1/20 11
 EXP.: 333
 SITE/HOLE: C0012D
 CORE: 8H
 SECTION: 1
 TOP DEPTH (m CSF):

OBSERVER: S Gas



SECTION DESCRIPTION

Silty clay,
 smooth surface,
 deformation +
 faulting.

- SS (100cm)

Ash layer, dark
 colored, sandy.

Integrated Ocean Drilling Program

Visual Core Description

NO. 812
 DATE: 11/12011
 EXP.: 333
 SITE/HOLE: C0012D
 CORE: 8H
 SECTION: 2
 TOP DEPTH (m CSF):

OBSERVER: S Gao

	PIECE #	GRAPHIC REPRESENTATION	DRILLING DISTURB.	STRUCTURES	SAMPLES	COLOR
0		(Hand-drawn sketch of ash-rich silt and clay)		↑ F		3/10gy
50		(Hand-drawn sketch of silt sized ash, dark-colored)				4/10gy
100						
150						

SECTION DESCRIPTION

Ash-rich silt and clay.

Silt sized ash, dark-colored. A nodule is at the location of 38cm

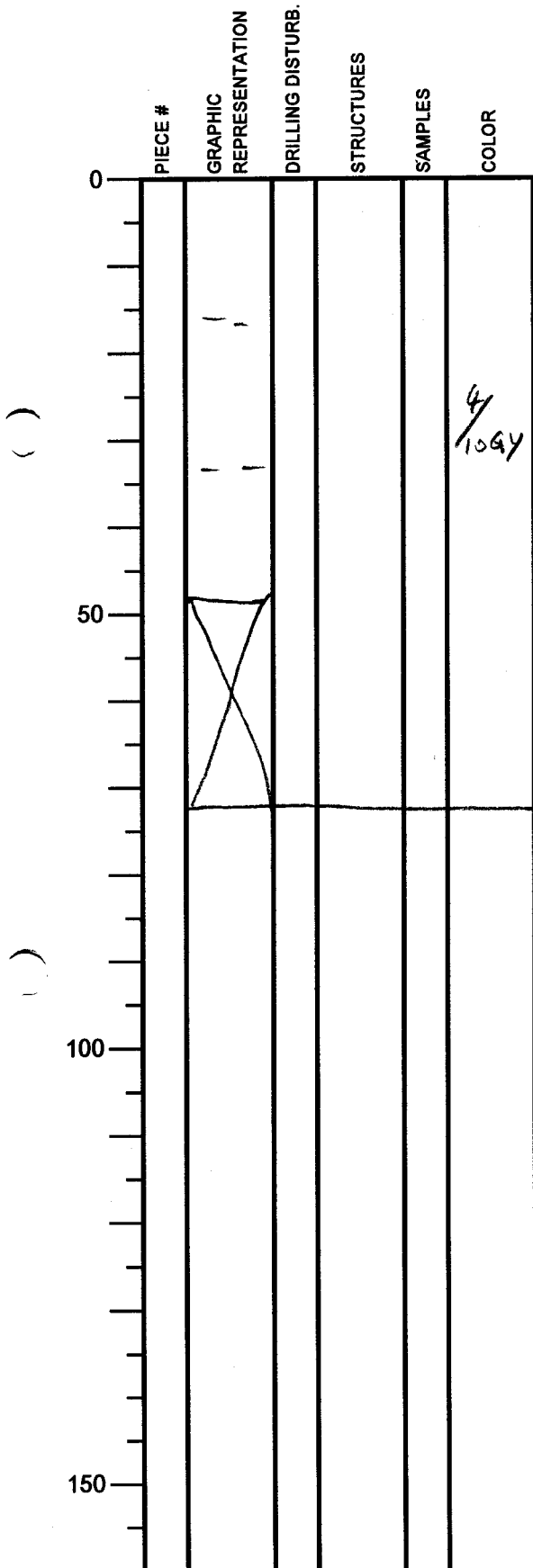
silty clay, deformed.

Integrated Ocean Drilling Program

Visual Core Description

NO. 813
 DATE: 11/12011
 EXP.: 333
 SITE/HOLE: C0012D
 CORE: 8H
 SECTION: 3
 TOP DEPTH (m CSF):

OBSERVER: S Gao



SECTION DESCRIPTION

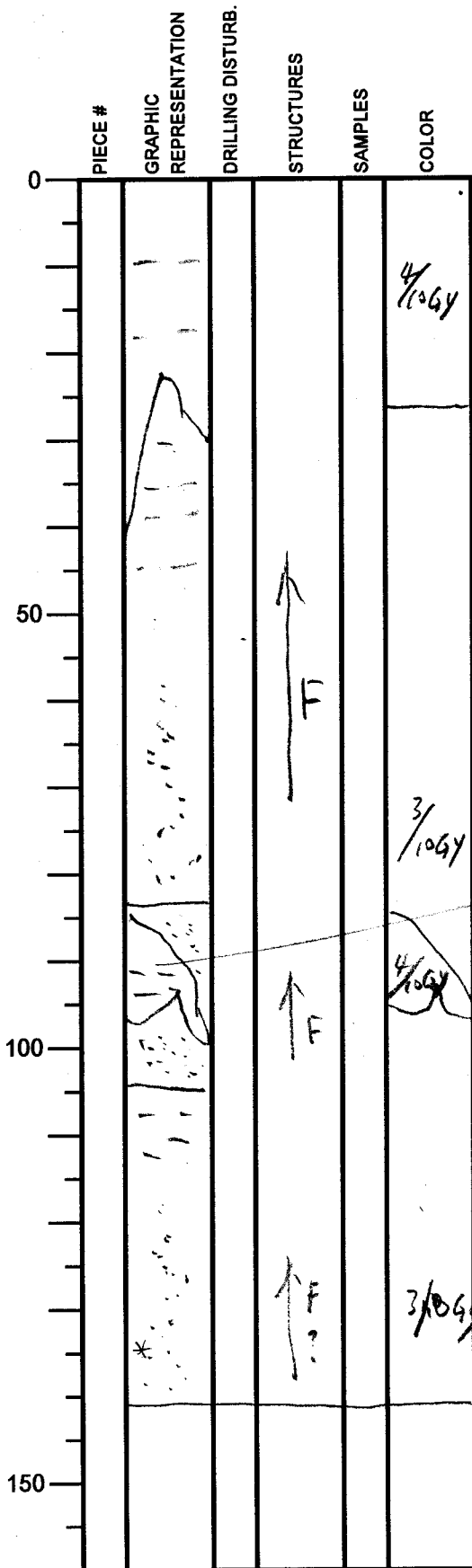
silty clay,
deformed.

Integrated Ocean Drilling Program

Visual Core Description

NO. 814
 DATE: 11/20/11
 EXP.: 333
 SITE/HOLE: C0012D
 CORE: 8H
 SECTION: 5
 TOP DEPTH (m CSF):

OBSERVER: S Gas



SECTION DESCRIPTION

Silty clay,
deformed.

Sandy layers, with
three fining upward
sequences.
Severe deformation
(natural?)

silty clay

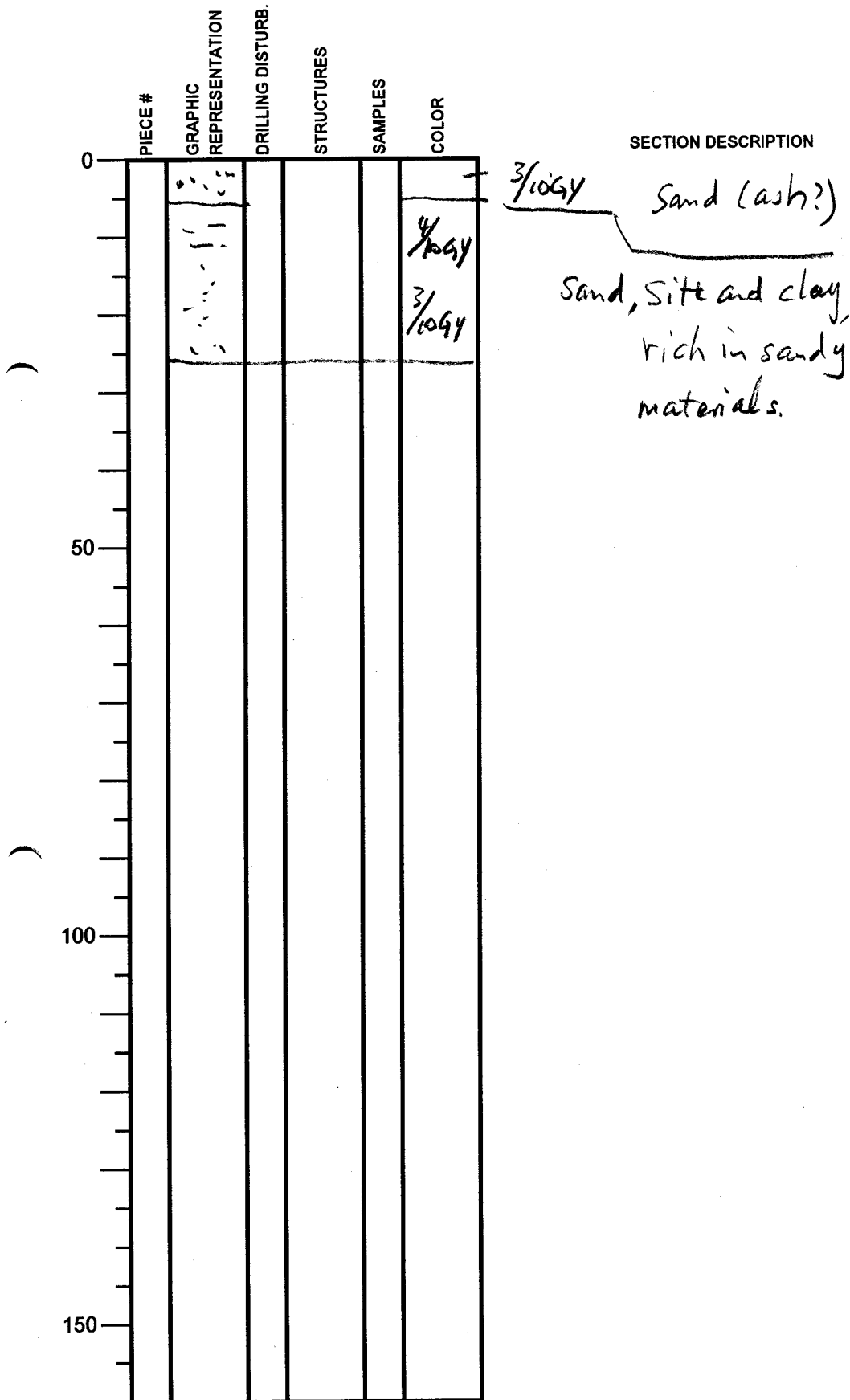
SS
(135 cm)

Integrated Ocean Drilling Program

Visual Core Description

NO. 815
 DATE: 11/20/00
 EXP.: 333
 SITE/HOLE: C0012D
 CORE: 8H
 SECTION: 6
 TOP DEPTH (m CSF):


OBSERVER: S Gao



Integrated Ocean Drilling Program

Visual Core Description

NO. 816
 DATE: 11/20/11
 EXP.: 333
 SITE/HOLE: C0012D
 CORE: 8H
 SECTION: CC-AA
 TOP DEPTH (m CSF):

	PIECE #	GRAPHIC REPRESENTATION	DRILLING DISTURB.	STRUCTURES	SAMPLES	COLOR
0						3/10GY
50						4/10GY
100						
150						

SECTION DESCRIPTION

Sand in the top,
 and silty clay
 in the bottom part.

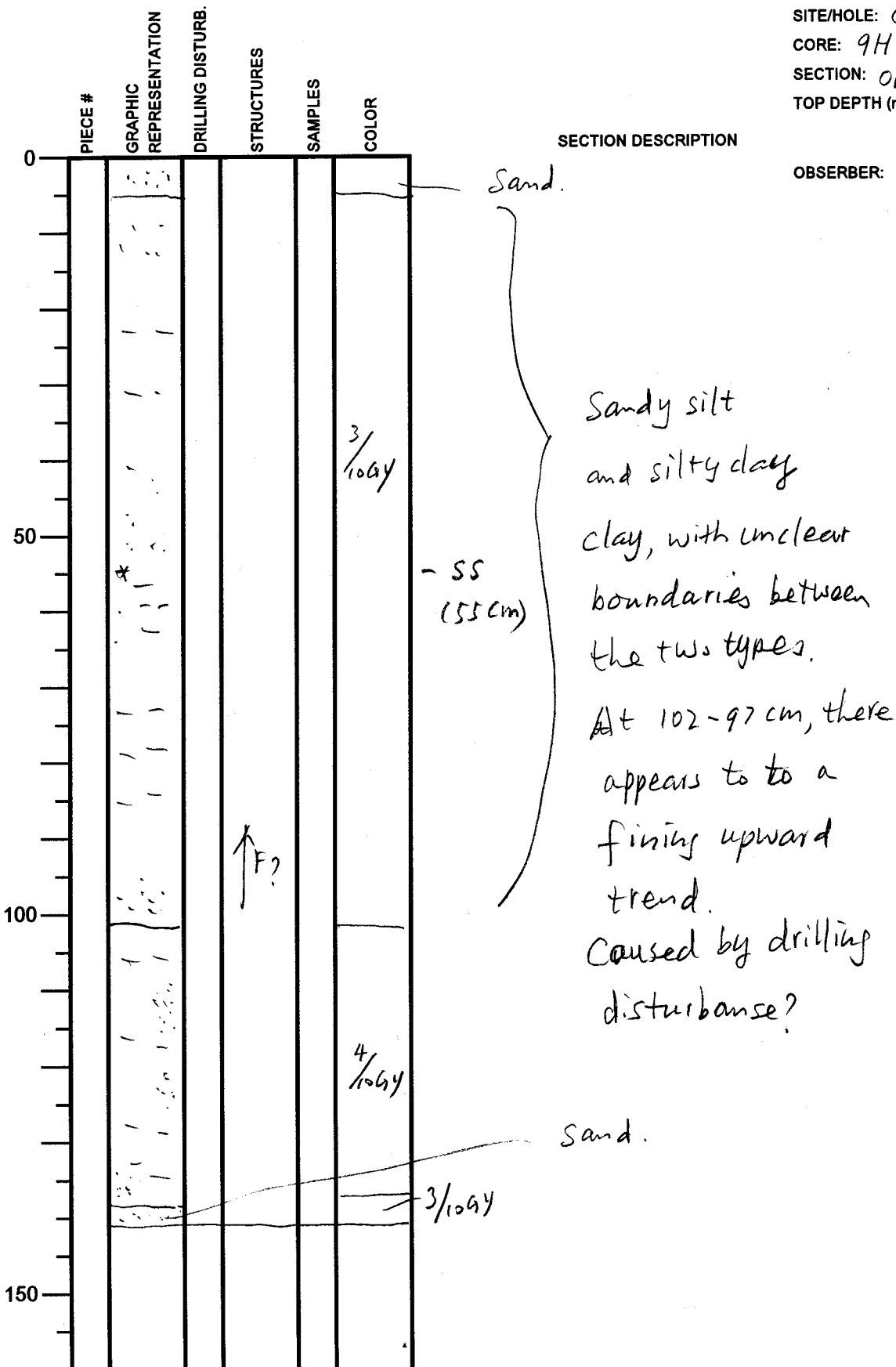
OBSERVER: S Gao

Integrated Ocean Drilling Program

Visual Core Description

NO. 817
 DATE: 11/12011
 EXP.: 333
 SITE/HOLE: C0012D
 CORE: 9H
 SECTION: 01
 TOP DEPTH (m CSF):

OBSERVER: S Gao



Integrated Ocean Drilling Program

Visual Core Description

NO. 818
 DATE: 11/20/11
 EXP.: 333
 SITE/HOLE: C0012D
 CORE: 9H
 SECTION: 2
 TOP DEPTH (m CSF):

	PIECE #	GRAPHIC REPRESENTATION	DRILLING DISTURB.	STRUCTURES	SAMPLES	COLOR
0		(Hand-drawn pattern)				3/10GY
50		(Hand-drawn pattern)		↑ F		3/10GY
100		(Hand-drawn pattern)				4/10GY
150		(Hand-drawn pattern)				

SECTION DESCRIPTION

OBSERVER: S Gas

The same pattern
 as the section of
 5-97cm of 9H-01,
 in 0-48 cm

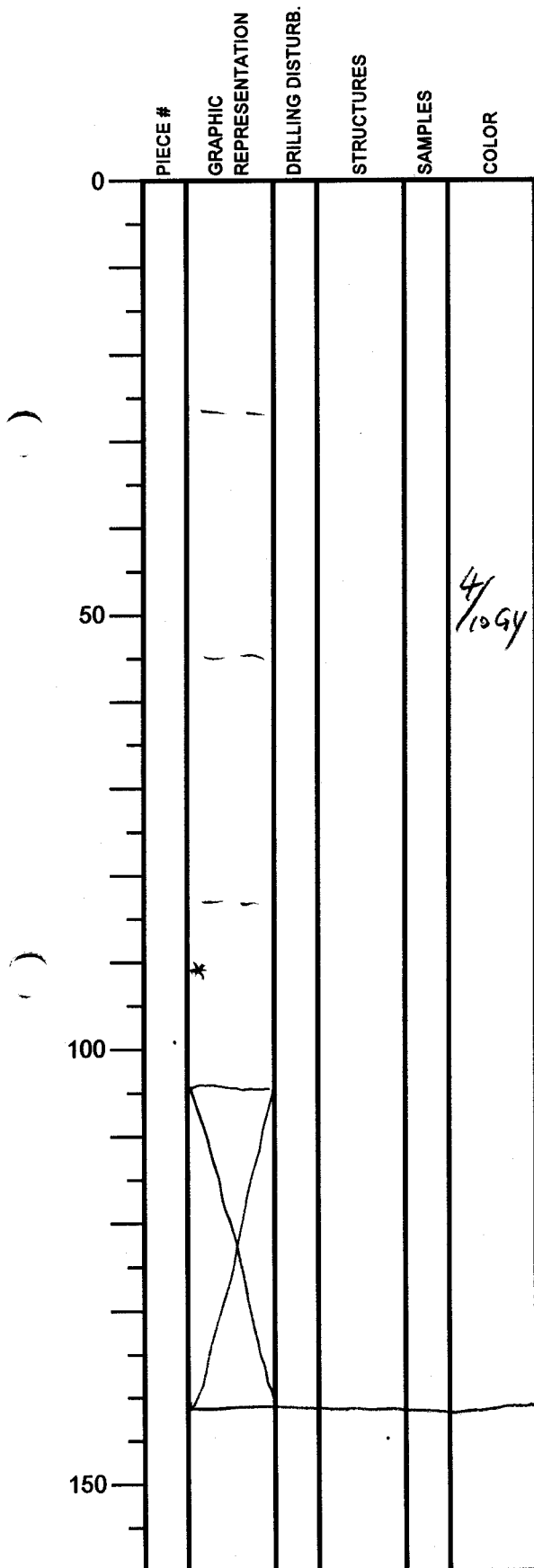
Sandy silt, dark-colored,
 with a fining upward trend

silty clay, with
 deformation.

Integrated Ocean Drilling Program

Visual Core Description

NO. 819
 DATE: 11/20/11
 EXP.: 333
 SITE/HOLE: C0012D
 CORE: 9H
 SECTION: 3
 TOP DEPTH (m CSF):



SECTION DESCRIPTION

Silty clay, with green/brown bands, deformed.

OBSERVER: S Gao

- SS (91cm)

Integrated Ocean Drilling Program Visual Core Description

NO. 820
 DATE: 11/20/11
 EXP.: 333
 SITE/HOLE: C0012D
 CORE: 9H
 SECTION: 4
 TOP DEPTH (m CSF):

	PIECE #	GRAPHIC REPRESENTATION	DRILLING DISTURB.	STRUCTURES	SAMPLES	COLOR
0						
50						4 10 Gy
100			▼ →	↑↑		
150						

SECTION DESCRIPTION

The same as
 9H-03 until
 73 cm, below which
 there is "flow in"
 structure due to
 drilling.

OBSERVER: S Gao

Integrated Ocean Drilling Program

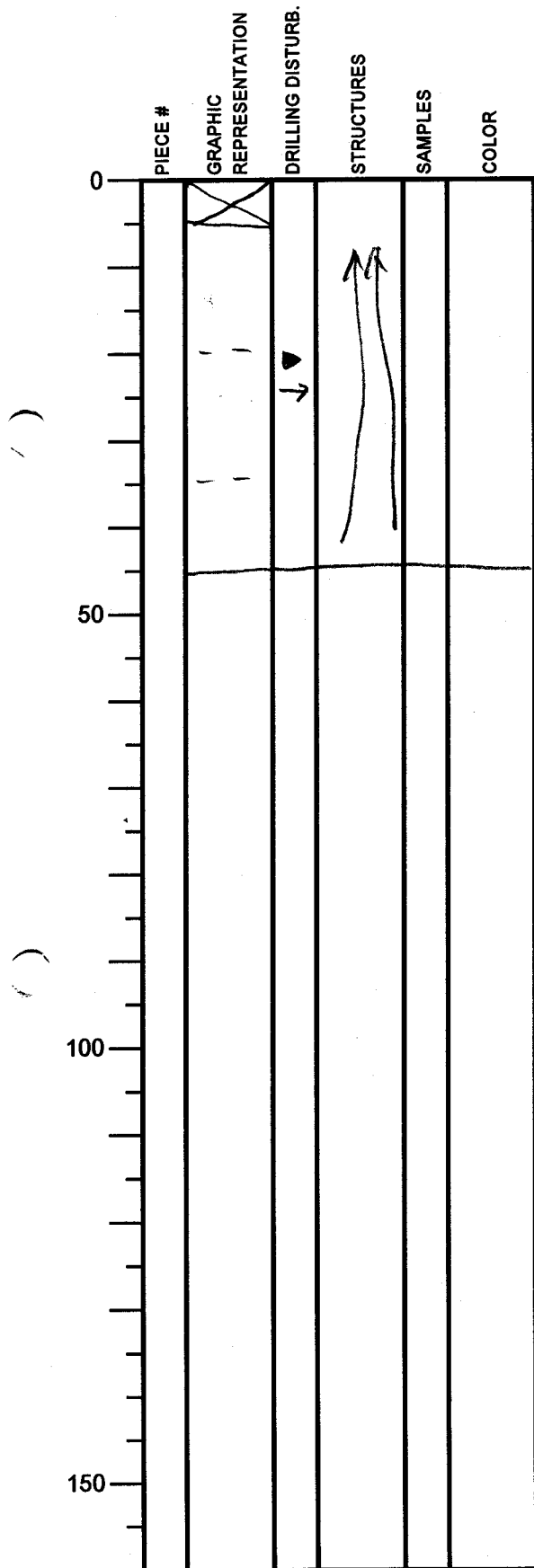
Visual Core Description

NO. 221
 DATE: 11/20/11
 EXP.: 333
 SITE/HOLE: C0012D
 CORE: 9H
 SECTION: CC-AA
 TOP DEPTH (m CSF):

SECTION DESCRIPTION


OBSERVER: S Gao

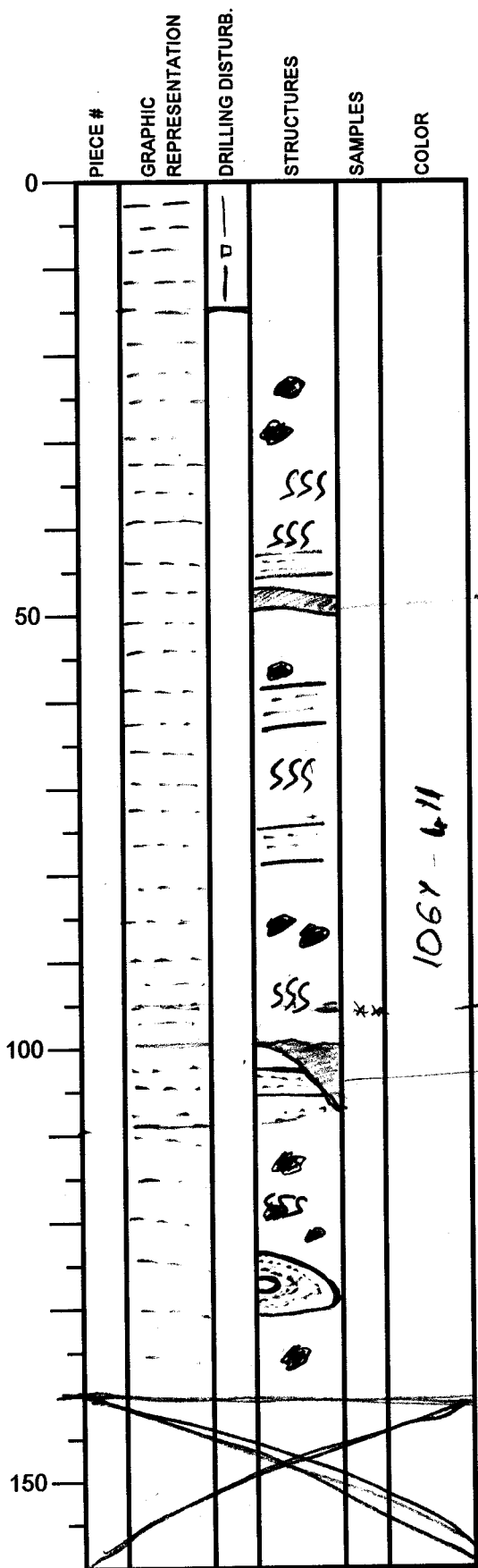
silty clay. "Flow
 in" structure.



Integrated Ocean Drilling Program

Visual Core Description

NO. 822
 DATE: 21/1/2010 (January 2nd)
 EXP.: 330
 SITE/HOLE: C0012 D
 CORE: 10 H
 SECTION: 
 TOP DEPTH (m CSF):



SECTION DESCRIPTION

OBSERVER:

Loray

Yellowish green layer

Chaotic Bedding

SS=95cm

Pyrite Rich zone → Alteration zone (SS)

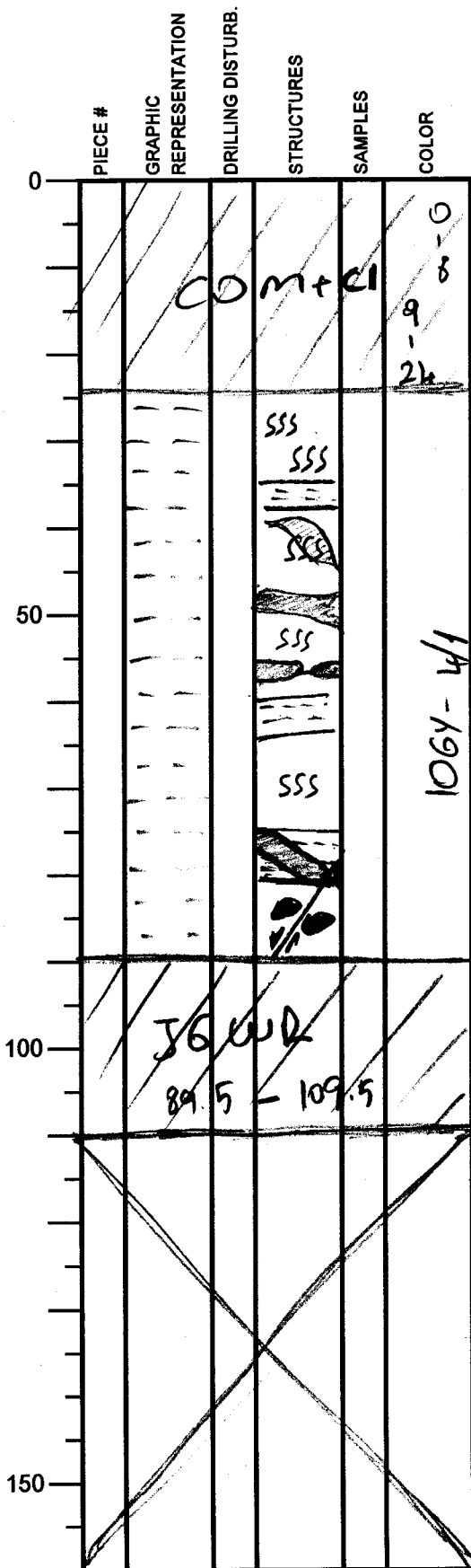
Shear zone (Str. Geo)

Folded greenish beds

Dark greenish gray clay, heavily bioturbated. There are many color mottlings and bandings. Plus alteration zone with pyrite and shear zone.

Integrated Ocean Drilling Program Visual Core Description

NO. 823
 DATE: 2/1/2010
 EXP.: 333
 SITE/HOLE: C012-0
 CORE: 10
 SECTION: 4
 TOP DEPTH (m CSF):



SECTION DESCRIPTION

OBSERVER:
Koray

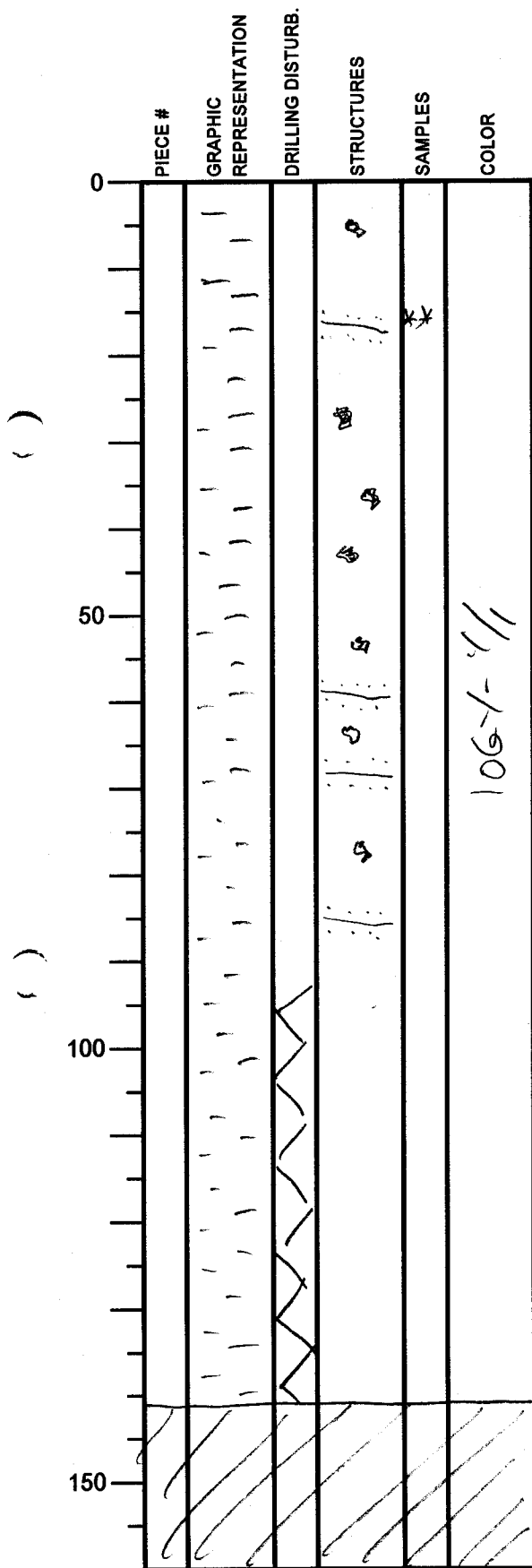
Yellowish green?
 ↑
 Color band?
 Color mottling

- Dark Greenish gray clay. with color mottlings and bands.
 ~80cm - Normal fault.
 - Heavily disturbed.

Integrated Ocean Drilling Program

Visual Core Description

NO. 824
 DATE: 2/1/2011
 EXP.: 333
 SITE/HOLE: C0012 D
 CORE: 10
 SECTION: 4
 TOP DEPTH (m CSF):



SECTION DESCRIPTION

OBSERVER:

[Handwritten signature]

SS = 15cm

- Dark greenish gray clay with color mottling and beds - surely bioturbated

- Flow-in in the lower part of the section

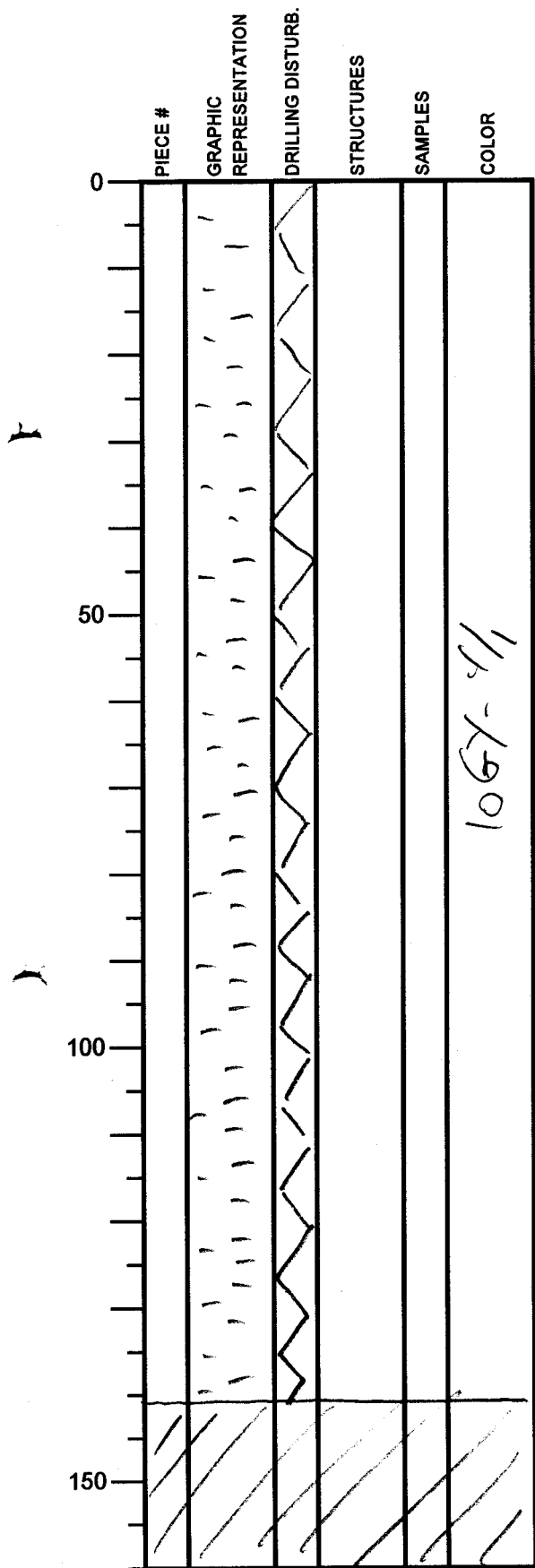
Flow in
 ↓

EOC = 141.5m

Integrated Ocean Drilling Program

Visual Core Description

NO. 825
 DATE: 2/1/2011
 EXP.: 333
 SITE/HOLE: C0012D
 CORE: 10
 SECTION: 5
 TOP DEPTH (m CSF):



SECTION DESCRIPTION

Flow-in

1067-4/1

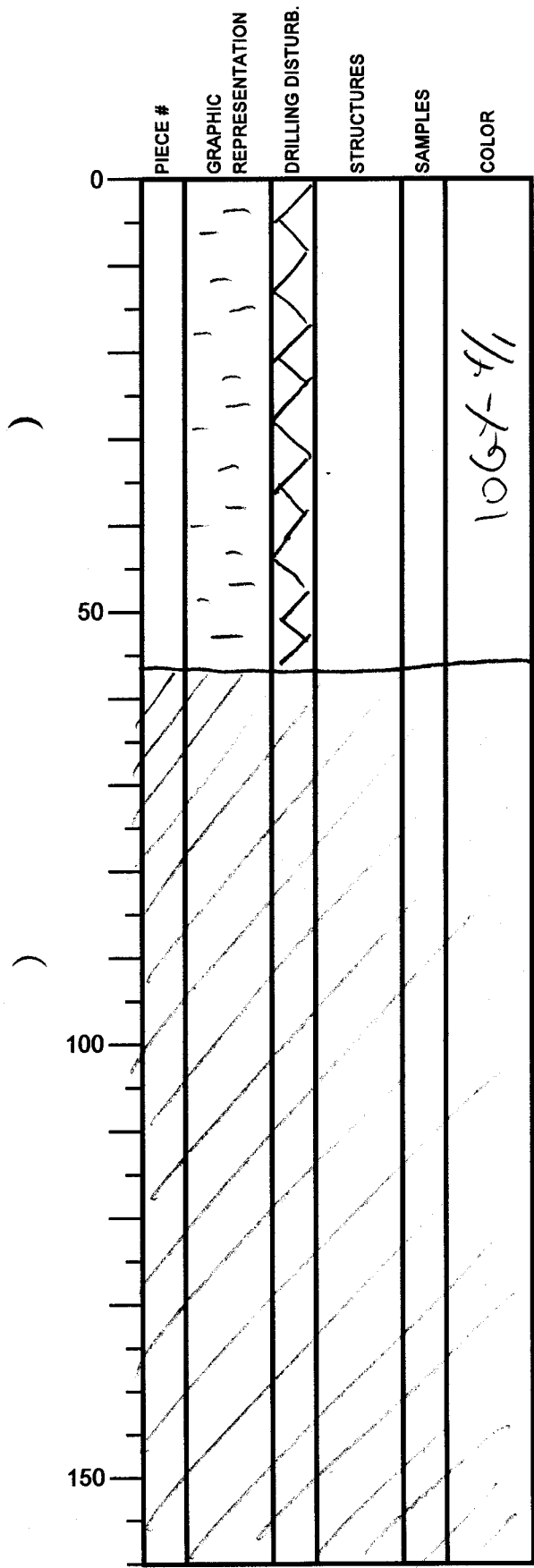
OBSERVER:

JAL

EOC = 140.5m

Integrated Ocean Drilling Program Visual Core Description

NO. 826
 DATE: 2/1/2011
 EXP.: 333
 SITE/HOLE: C0012 D
 CORE: 10
 SECTION: 6
 TOP DEPTH (m CSF):



SECTION DESCRIPTION

↓
 Flow-in

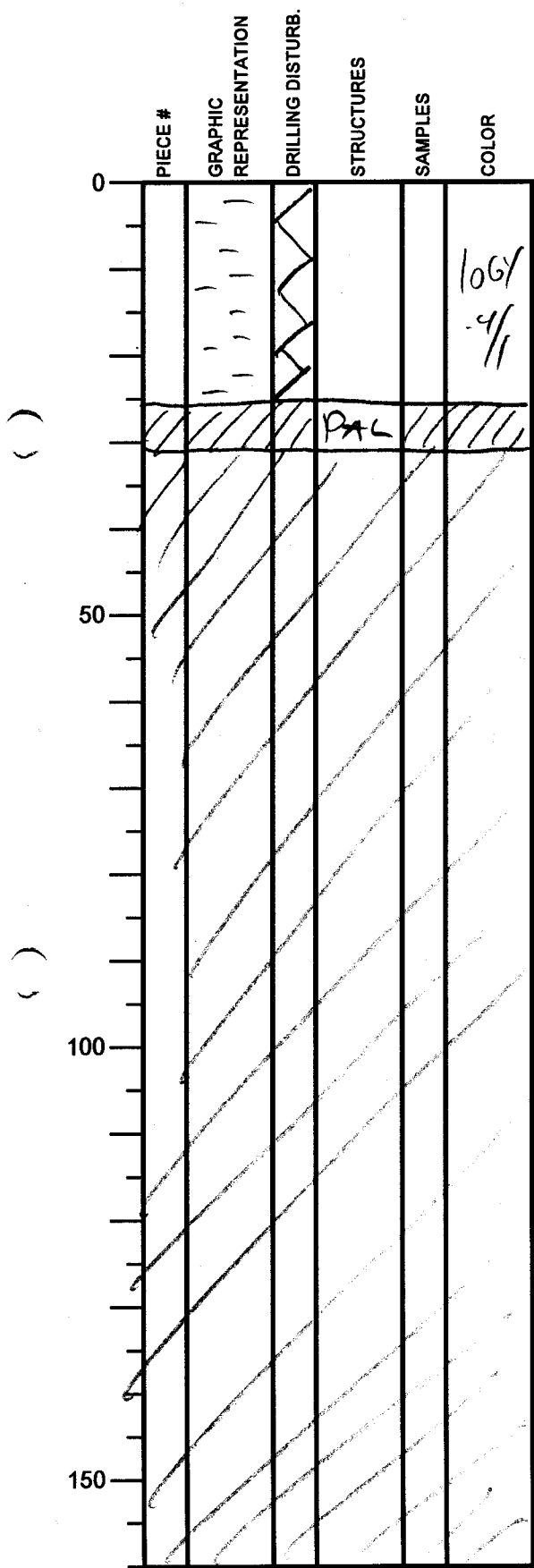
OBSERVER: *JAC*

EOC = 570

Integrated Ocean Drilling Program

Visual Core Description

NO. 827
 DATE: 2/1/2011
 EXP.: 333
 SITE/HOLE: C0012D
 CORE: 10
 SECTION: CC
 TOP DEPTH (m CSF):



SECTION DESCRIPTION

↓ Flow-in

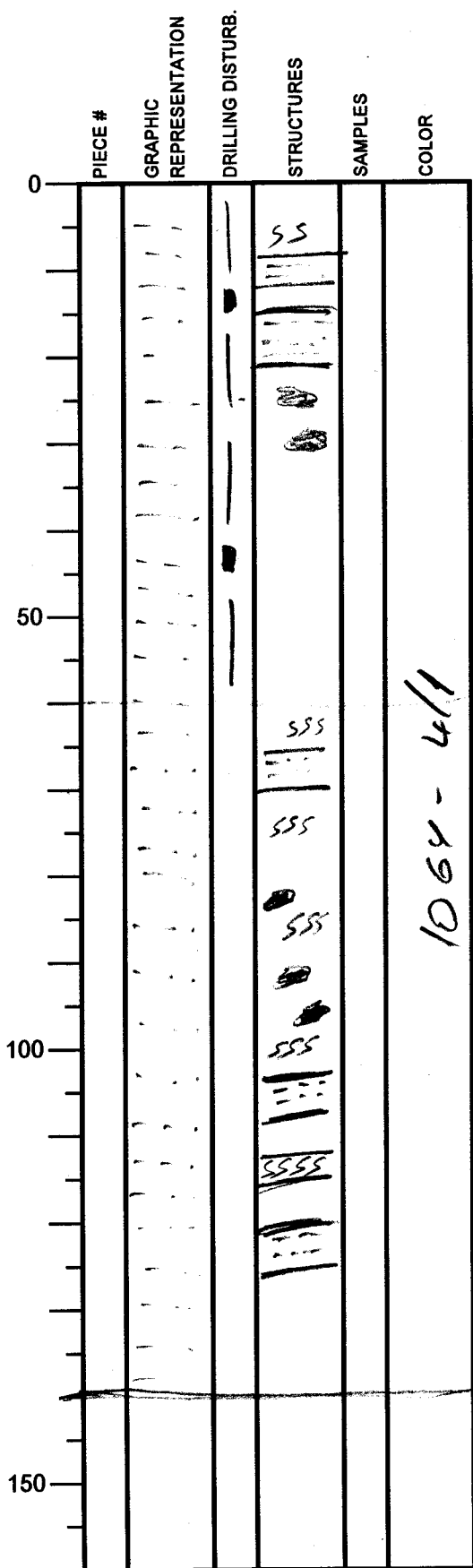
OBSERVER: *JCL*

COC = 31a

Integrated Ocean Drilling Program

Visual Core Description

NO. 828
 DATE: 2/1/2011
 EXP.: 333
 SITE/HOLE: C00120
 CORE: 11H
 SECTION: 1
 TOP DEPTH (m CSF):



SECTION DESCRIPTION

OBSERVER:

Laney

Color bandings

Color mottlings



Heavy bioturbation.

~~Grading~~ couldn't be observed

Band of heavy bioturbation

dark greenish gray clay

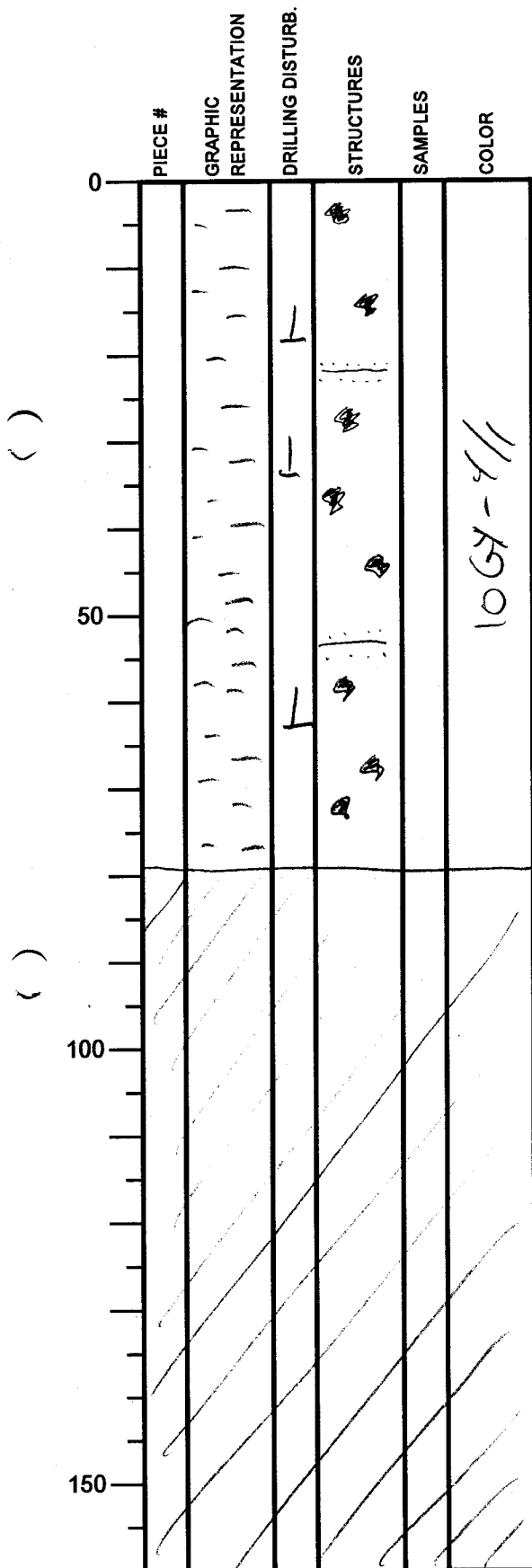
Heavy bioturbation

Color mottlings and bandings

Integrated Ocean Drilling Program

Visual Core Description

NO. 829
 DATE: 2/1/2011
 EXP.: 333
 SITE/HOLE: C00120
 CORE: 11H
 SECTION: 3
 TOP DEPTH (m CSF):



SECTION DESCRIPTION

OBSERVER:

JAL

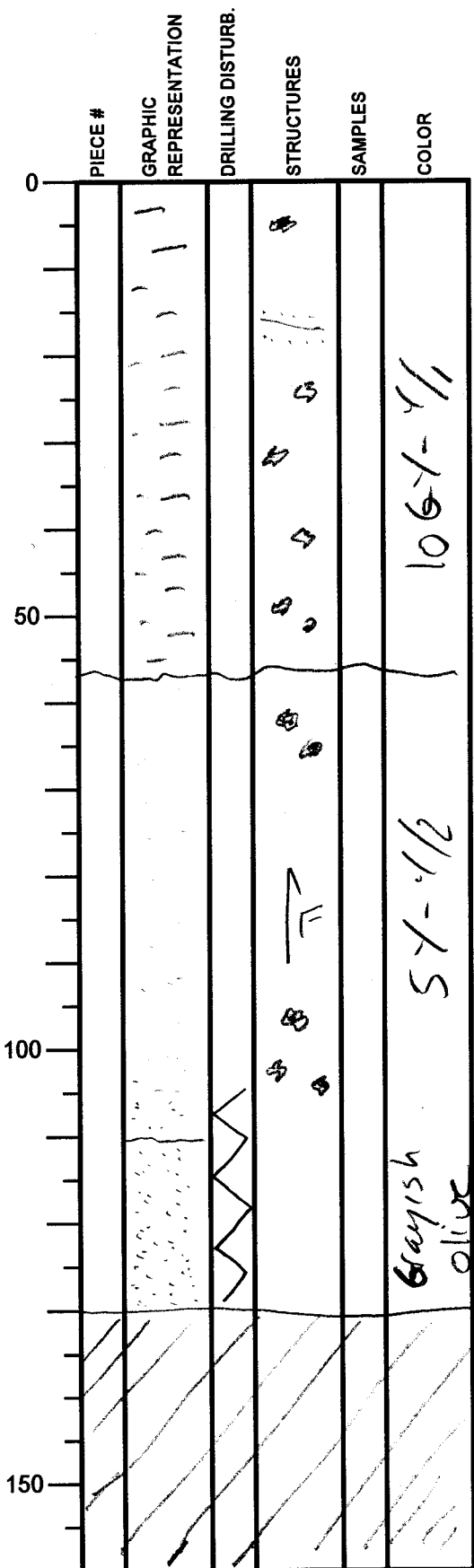
Same as above

EOC = 79 cm

Integrated Ocean Drilling Program

Visual Core Description

NO. 830
 DATE: 21/1/2011
 EXP.: 333
 SITE/HOLE: C0012D
 CORE: 11 H
 SECTION: 4
 TOP DEPTH (m CSF):



SECTION DESCRIPTION

OBSERVER:

Y C

Same as above

Finny - upward fine sand - silt
 comprises some altered with ad veins

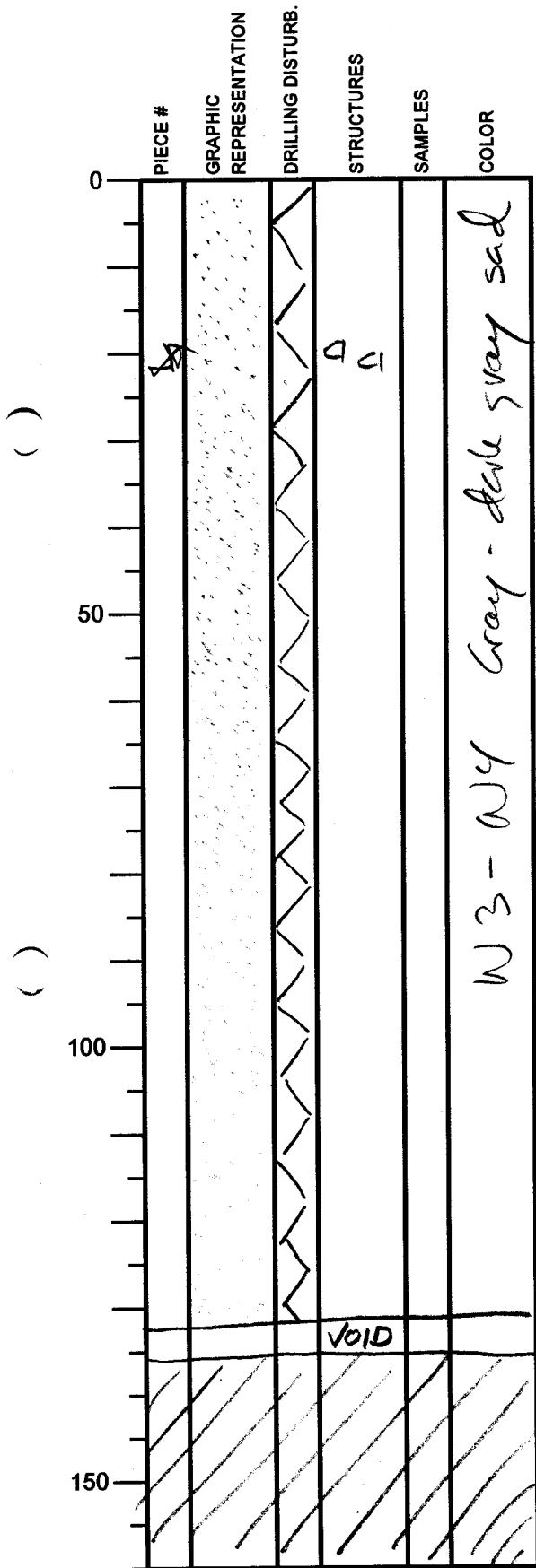
Semi-consolidated sandstone, severely disturbed

EOC = 130 cm

Integrated Ocean Drilling Program

Visual Core Description

NO. 831
 DATE: 21/12010
 EXP.: 333
 SITE/HOLE: C0012D
 CORE: 11 #
 SECTION: S
 TOP DEPTH (m CSF):



SECTION DESCRIPTION

OBSERVER:

Jal

Patches of white rock / fragments -
 of id spar

Semi-consolidated
 sandstone, severely
 disturbed during drilling

* Smear slide at 21cm

EOC = 136 cm

Integrated Ocean Drilling Program Visual Core Description

NO. 832
 DATE: 2/1/2011
 EXP.: 333
 SITE/HOLE: C00120
 CORE: 11 H
 SECTION: CC
 TOP DEPTH (m CSF):

	PIECE #	GRAPHIC REPRESENTATION	DRILLING DISTURB.	STRUCTURES	SAMPLES	COLOR
0		[Stippled pattern]	[Sawtooth pattern]			ND-WY
				PAL		
50		[Diagonal hatching]				
100		[Diagonal hatching]				
150		[Diagonal hatching]				

SECTION DESCRIPTION

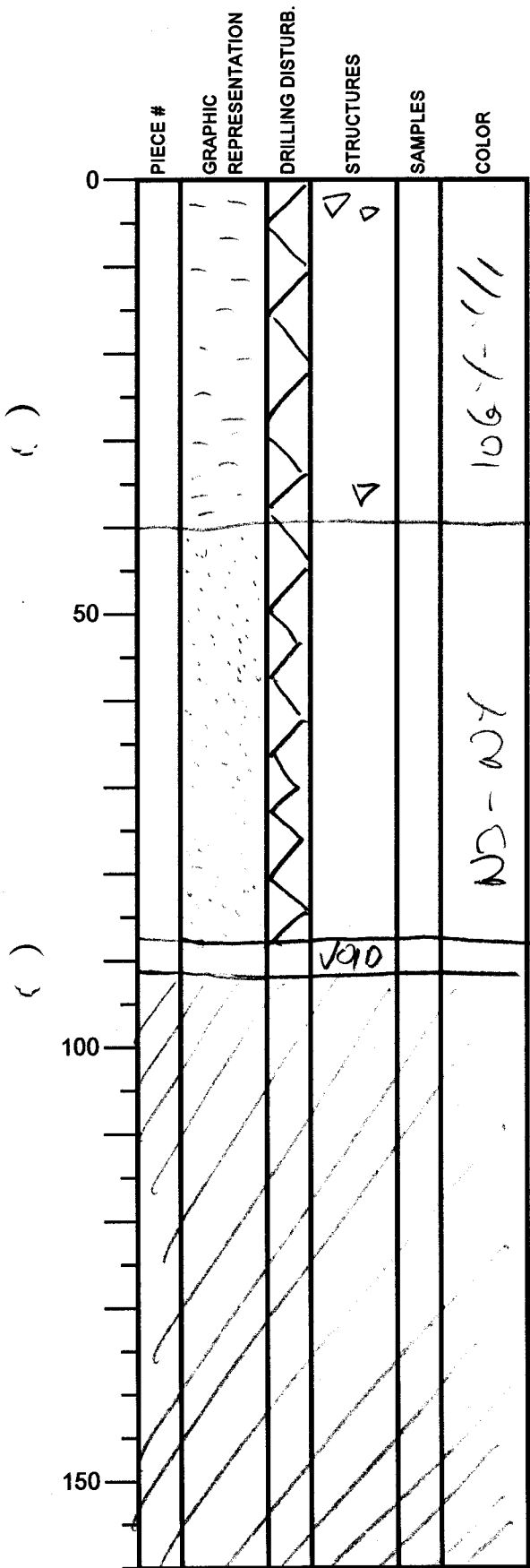
Same as above

OBSERVER:

[Handwritten signature]

Integrated Ocean Drilling Program Visual Core Description

NO. 833
 DATE: 2/1/2011
 EXP.: 333
 SITE/HOLE: C00120
 CORE: 12 H
 SECTION: 1
 TOP DEPTH (m CSF):



SECTION DESCRIPTION

Outsized clasts

OBSERVER:

JL

Outsized clast

Highly disturbed section

EOC = 90.5cm

Integrated Ocean Drilling Program

Visual Core Description

NO. 834
 DATE: 2/1/2011
 EXP.: 333
 SITE/HOLE: C0012 D
 CORE: 12H
 SECTION: 2
 TOP DEPTH (m CSF):

	PIECE #	GRAPHIC REPRESENTATION	DRILLING DISTURB.	STRUCTURES	SAMPLES	COLOR
0		*				NY
50				*		1064-41
100		/ / / / /				
150		/ / / / /				

SECTION DESCRIPTION

OBSERVER: *Jal*

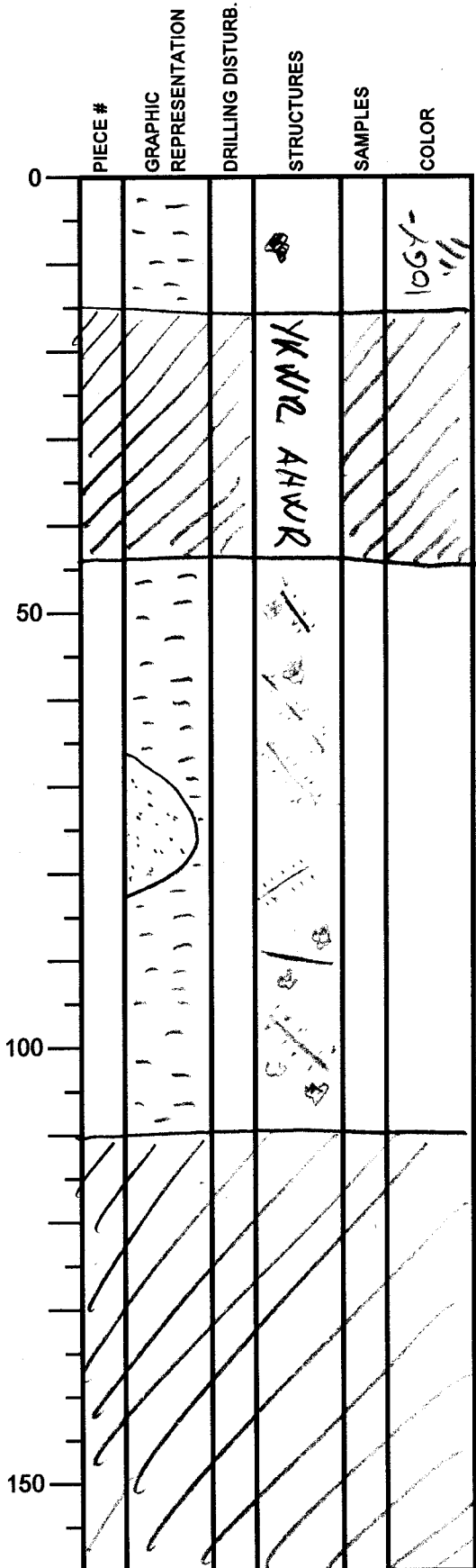
* Smear slide at ~15a

EOC = 30.5 cm

Integrated Ocean Drilling Program

Visual Core Description

NO. 835
 DATE: 2/1/2011
 EXP.: 333
 SITE/HOLE: C0012D
 CORE: 12
 SECTION: 3
 TOP DEPTH (m CSF):



SECTION DESCRIPTION

OBSERVER: JCL

Dark greenish gray clay with some color mottling

Dark greenish gray clay with a large clast of sandstone, very similar to the sand in the overlying section

Color bands are dipping and some mottling in sec.

EOC = 110a

Integrated Ocean Drilling Program Visual Core Description

NO. 836
 DATE: 2/1/2011
 EXP.: 333
 SITE/HOLE: C0012D
 CORE: 12
 SECTION: 1
 TOP DEPTH (m CSF):

OBSERVER: *JEL*

	PIECE #	GRAPHIC REPRESENTATION	DRILLING DISTURB.	STRUCTURES	SAMPLES	COLOR
0				●		1067-4/1
50		/ / / / /				
100		/ / / / /				
150		/ / / / /				

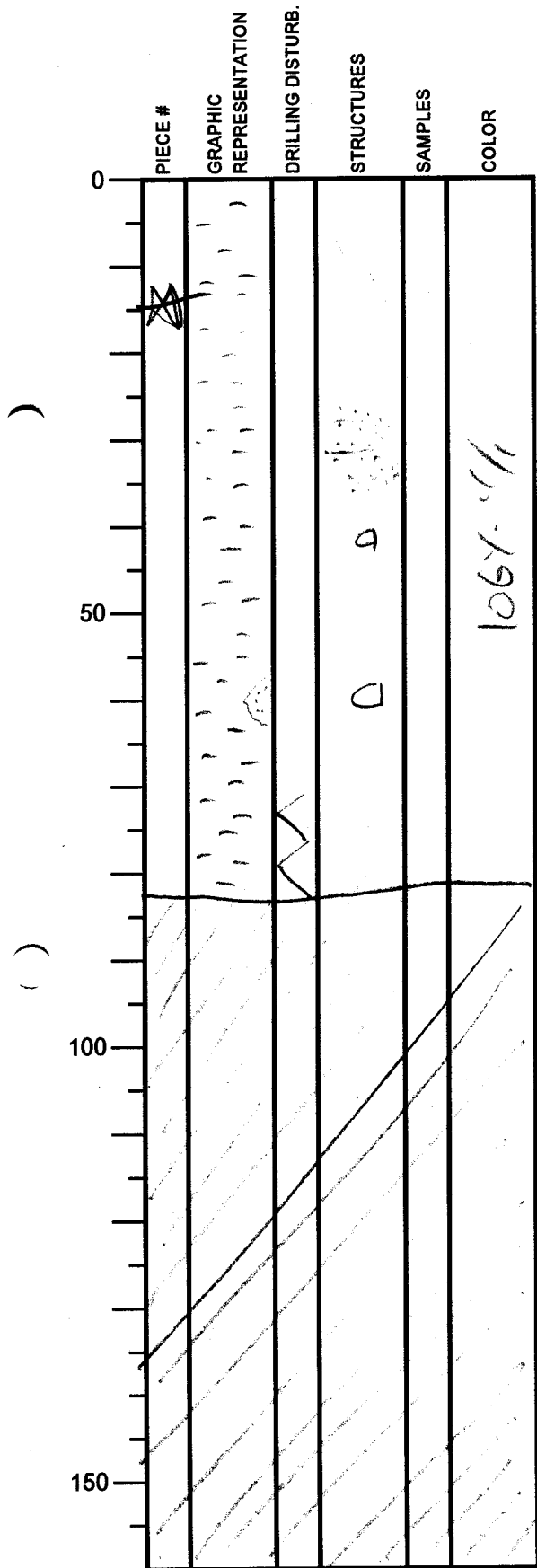
SECTION DESCRIPTION

Same as above

EOC = 20.5 cm

Integrated Ocean Drilling Program Visual Core Description

NO. 837
 DATE: 2/1/2011
 EXP.: 333
 SITE/HOLE: C00120
 CORE: 12
 SECTION: 5
 TOP DEPTH (m CSF):



SECTION DESCRIPTION

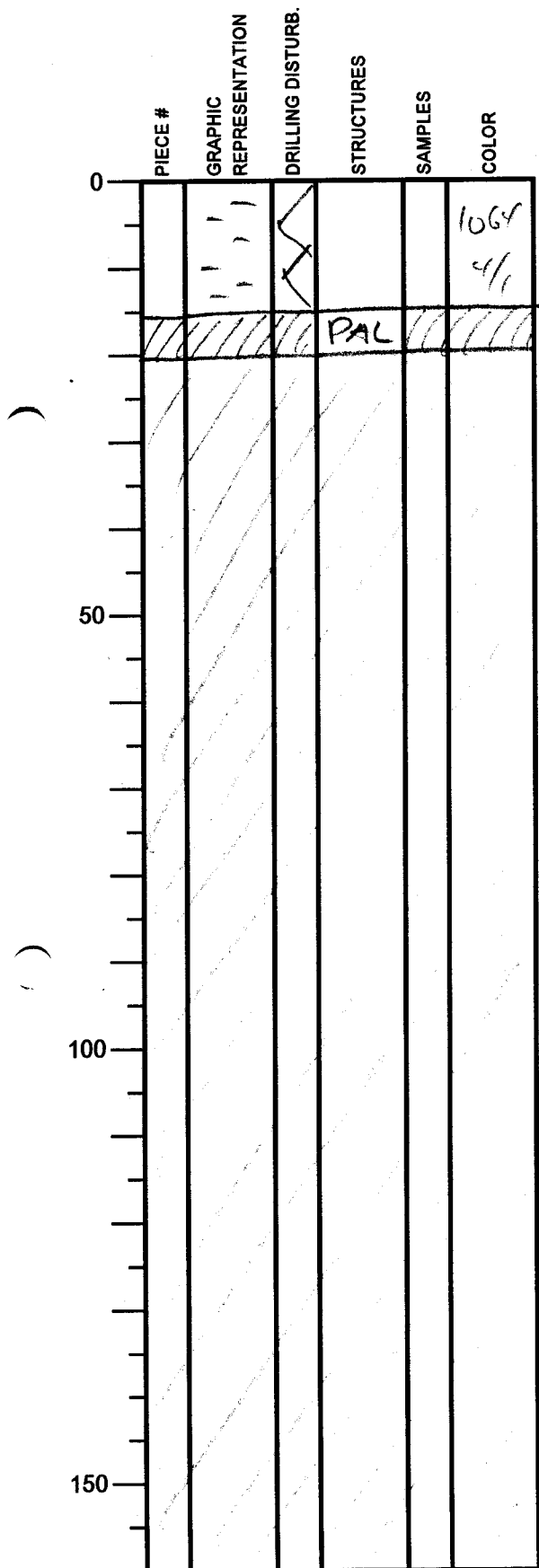
OBSERVER: *YCL*

EOC = 82.5 m

Integrated Ocean Drilling Program Visual Core Description

NO. 838
 DATE: 2/1/2011
 EXP.: 333
 SITE/HOLE: C00120
 CORE: 12
 SECTION: CC
 TOP DEPTH (m CSF):

OBSERVER: JCL



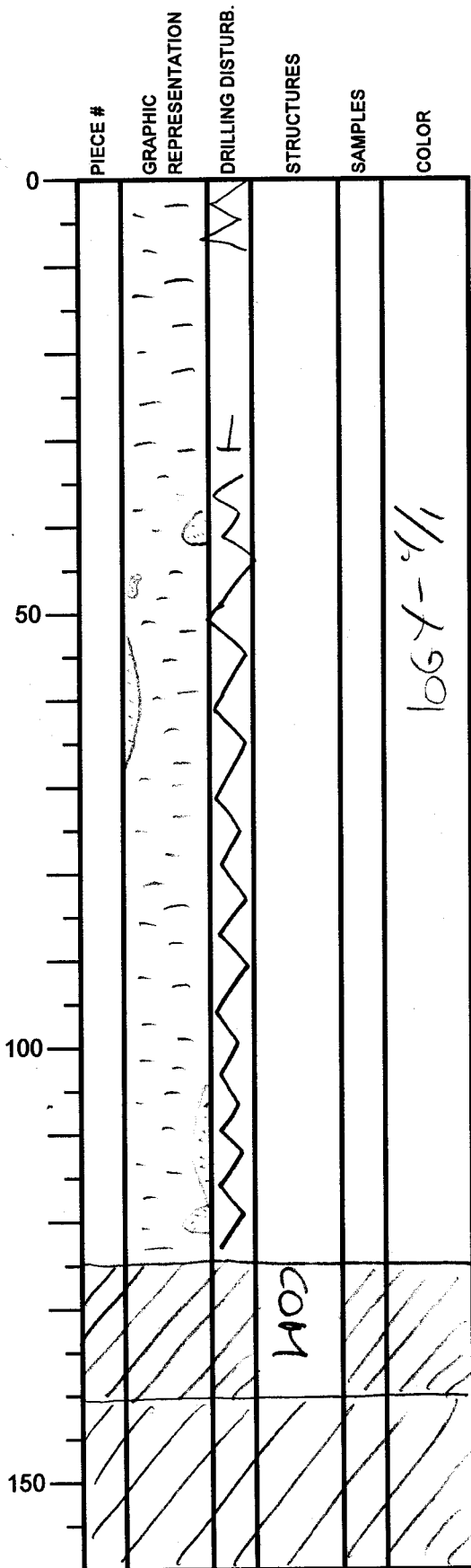
SECTION DESCRIPTION

Flow in

EOC = 20.5m

Integrated Ocean Drilling Program Visual Core Description

NO. 839
 DATE: 2/1/2011
 EXP.: 333
 SITE/HOLE: C0012 D
 CORE: 13H
 SECTION: 1
 TOP DEPTH (m CSF):



SECTION DESCRIPTION

OBSERVER: *Jal*

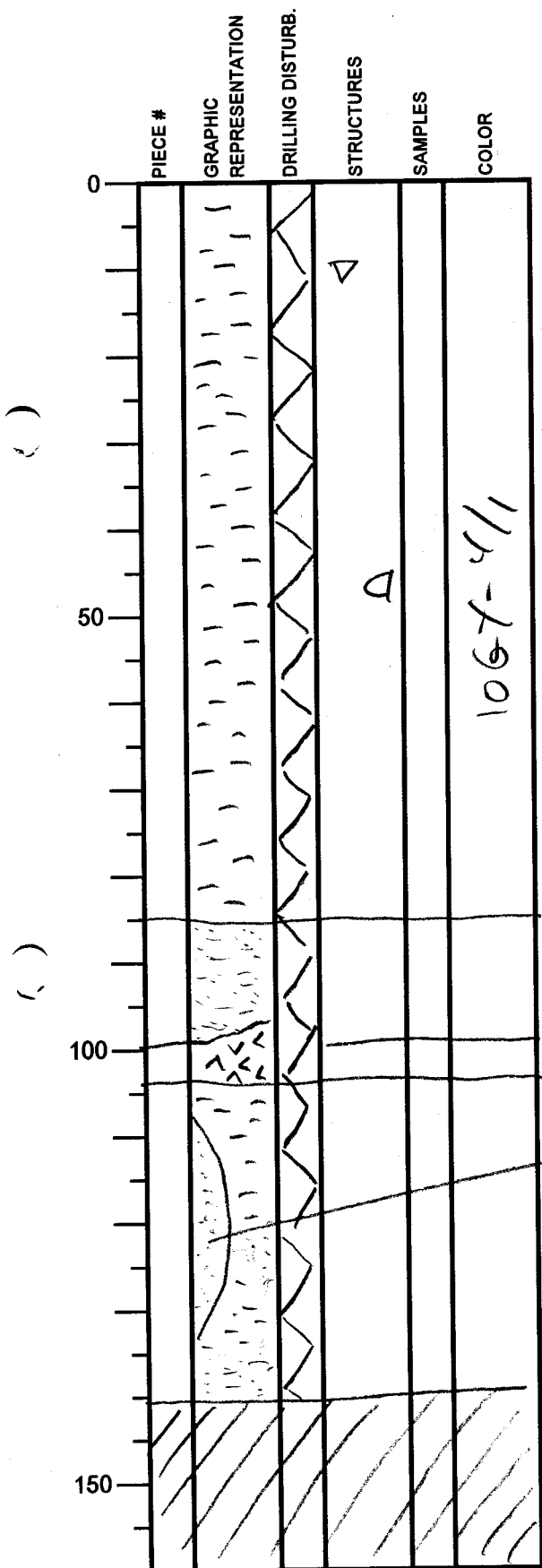
Dark greenish gray clay
 severely disturbed?

 Flow in?

EOC = 140.5 cm

Integrated Ocean Drilling Program Visual Core Description

NO. 840
 DATE: 2/1/2010
 EXP.: 333
 SITE/HOLE: COO20
 CORE: 13H
 SECTION: 2
 TOP DEPTH (m CSF):



SECTION DESCRIPTION

OBSERVER: *Jal*

Outsized clast

Flow-in?

Patch of black ash

This section is also affected by flow-in?

Sandy clay

Black ash layer

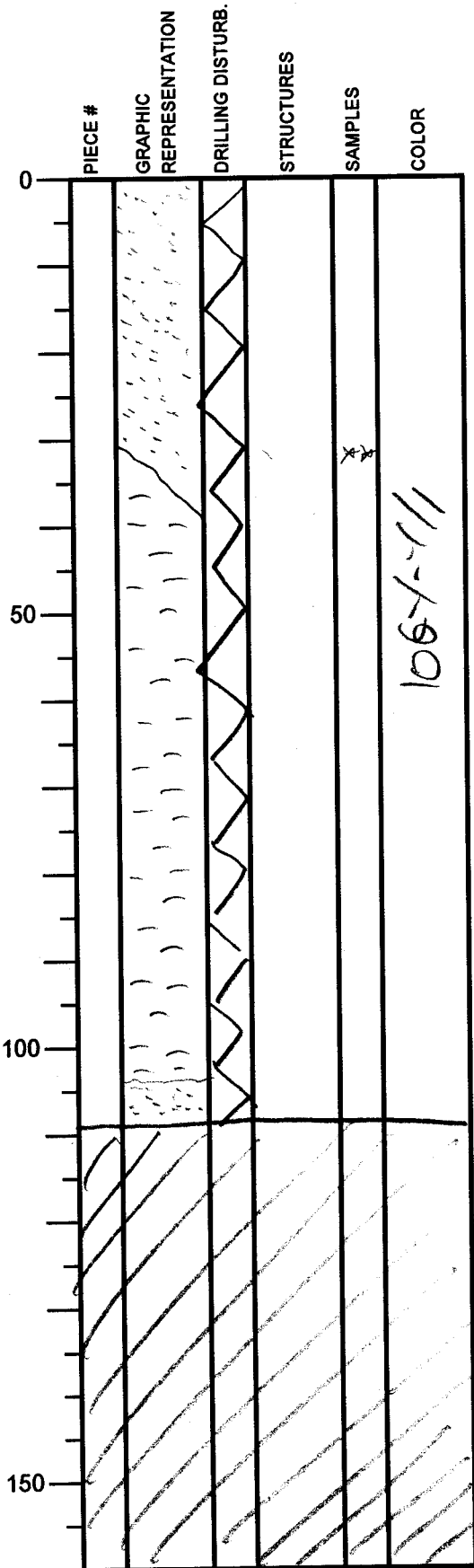
Sandy clay

Flow-in?

EOC = 141a

Integrated Ocean Drilling Program Visual Core Description

NO. 811
 DATE: 2/1/2010
 EXP.: 333
 SITE/HOLE: COO20
 CORE: 13H
 SECTION: 3
 TOP DEPTH (m CSF):



SECTION DESCRIPTION

OBSERVER: JLC

*Also this section
 is probably affected
 by flow - 14.*

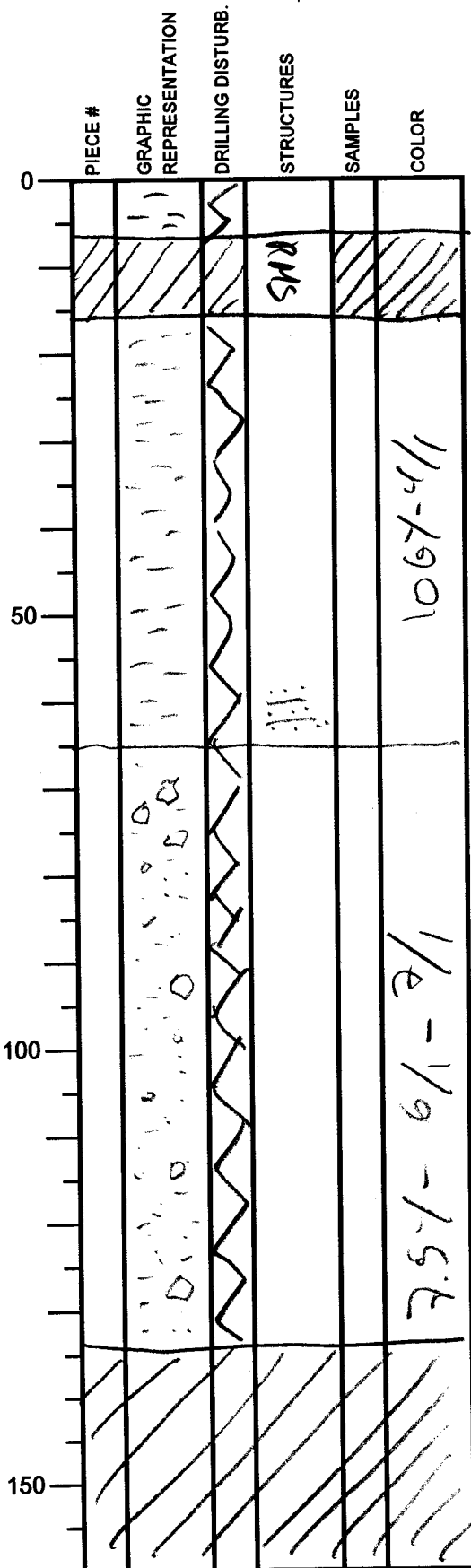
Smear slide at 30cm

EOC = 109.5 cm

Integrated Ocean Drilling Program

Visual Core Description

NO. 812
 DATE: 2/1/2010
 EXP.: 333
 SITE/HOLE: COO12D
 CORE: 13H
 SECTION: 5
 TOP DEPTH (m CSF):



SECTION DESCRIPTION

OBSERVER:

JCL

Dark greenish gray mud - sandy mud - disturbed by drilling

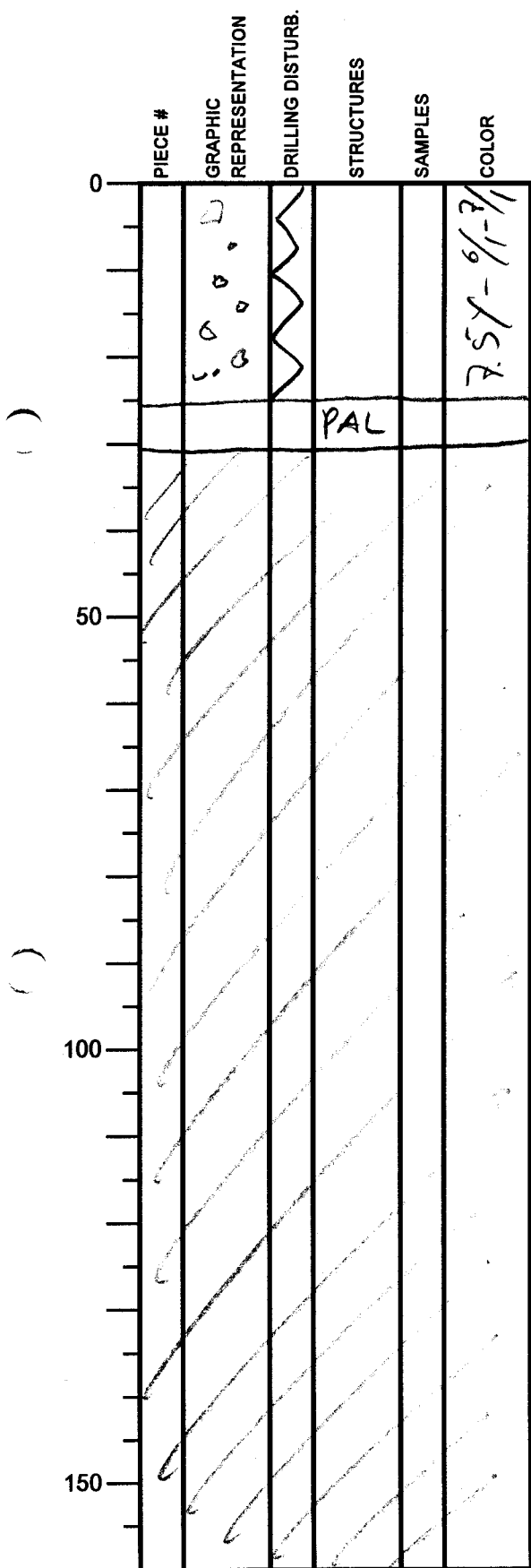
Gray - light gray gravelly sandy mud - severely disturbed by drilling

EOC = 139m

Integrated Ocean Drilling Program

Visual Core Description

NO. 843
 DATE: 2/1/2010
 EXP.: 333
 SITE/HOLE: C00120
 CORE: 13A
 SECTION: CC
 TOP DEPTH (m CSF):



SECTION DESCRIPTION

Same as above.

OBSERVER: J.C.

EOC = 30.50