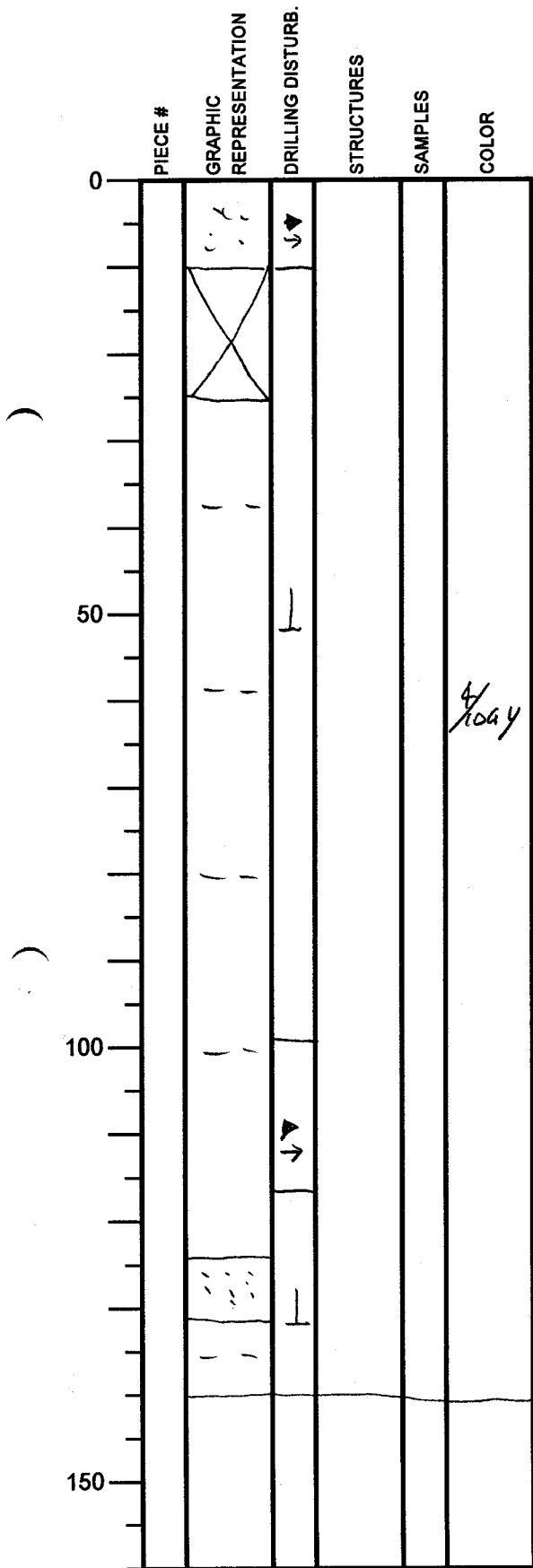


# Integrated Ocean Drilling Program

## Visual Core Description

NO. 844  
 DATE: 2/1/2011  
 EXP.: 333  
 SITE/HOLE: C0012E  
 CORE: 1X  
 SECTION: 1  
 TOP DEPTH (m CSF):

OBSERVER: S Gao



SECTION DESCRIPTION

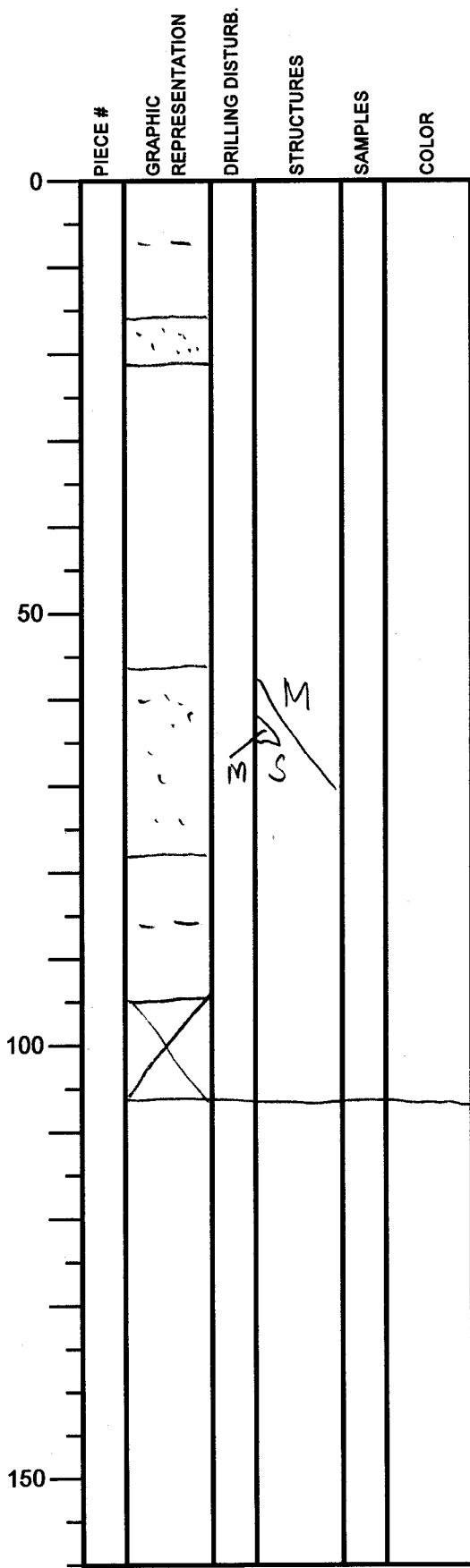
Consolidated  
 mudstone and  
 sandstone (1-10 cm  
 and 124-132 cm).  
 Bioturbation is  
 common.

- SS (65 cm)
- SS (72 cm)
- SS (126 cm)

# Integrated Ocean Drilling Program

## Visual Core Description

NO. 845  
 DATE: 2/1/2011  
 EXP.: 333  
 SITE/HOLE: C0012E  
 CORE: 1X  
 SECTION: 2  
 TOP DEPTH (m CSF):



### SECTION DESCRIPTION

Mudstone,  
 with sandstones  
 -ss (19 cm)  
 at 16-22, 66-78  
 cm.

A high angle fault(?)  
 occurs at 58-68 cm.

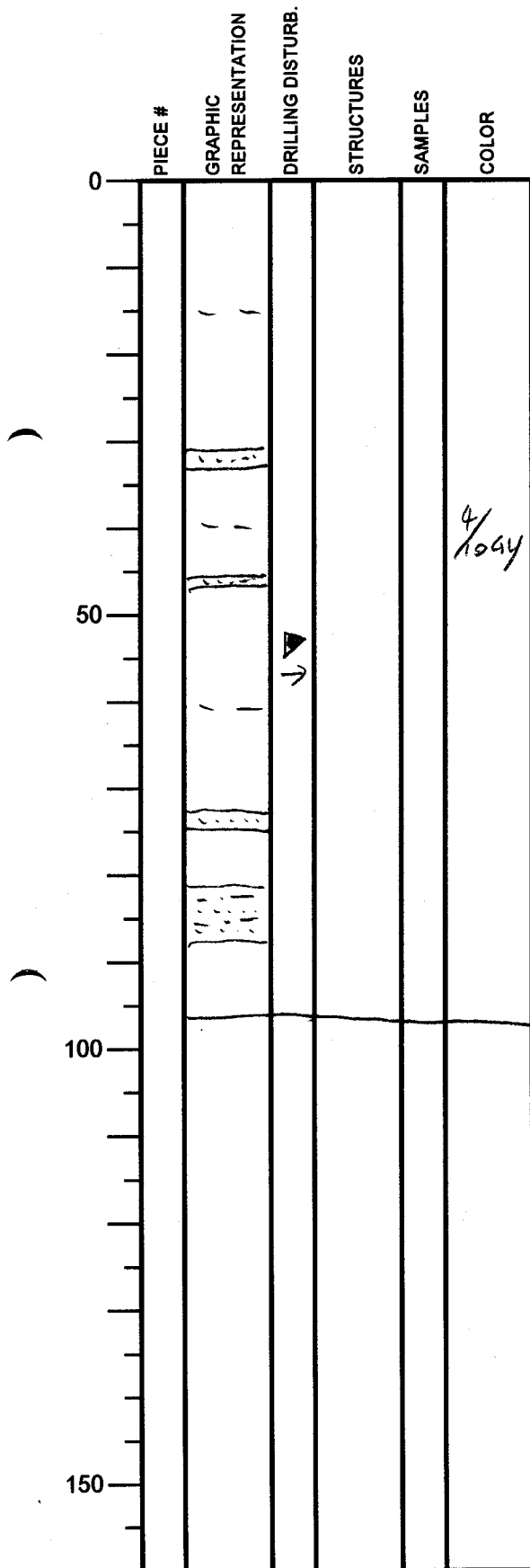
OBSERVER: S Gao

# Integrated Ocean Drilling Program

## Visual Core Description

NO. 846  
 DATE: 2/1/2011  
 EXP.: 333  
 SITE/HOLE: C0012E  
 CORE: 1X  
 SECTION: 4  
 TOP DEPTH (m CSF):

OBSERVER: S Gao





SECTION DESCRIPTION

Mudstone  
 interlayered  
 with thin-layered  
 sandstone.  
 Heavily disturbed  
 due to drilling.

# Integrated Ocean Drilling Program Visual Core Description

NO. 847  
 DATE: 2/1/2011  
 EXP.: 333  
 SITE/HOLE: 0042E  
 CORE: 1X  
 SECTION: CC  
 TOP DEPTH (m CSF):

	PIECE #	GRAPHIC REPRESENTATION	DRILLING DISTURB.	STRUCTURES	SAMPLES	COLOR
0						
50						
100						
150						

SECTION DESCRIPTION

Mudstone.

OBSERVER: S Gao

# Integrated Ocean Drilling Program

## Visual Core Description

NO. 848  
 DATE: 211/2011  
 EXP.: 333  
 SITE/HOLE: C0012E  
 CORE: 2X  
 SECTION: 1  
 TOP DEPTH (m CSF):

OBSERVER: S Gao

	PIECE #	GRAPHIC REPRESENTATION	DRILLING DISTURB.	STRUCTURES	SAMPLES	COLOR
0						
50			▲ ↓	↕		
100						
150						

SECTION DESCRIPTION

Mudstone, with a pyrite layer (thickness unknown, because of drilling disturbance).

Pyrite occurrence.

# Integrated Ocean Drilling Program

## Visual Core Description

NO. 849  
 DATE: 2/1/2011  
 EXP.: 333  
 SITE/HOLE: C0012 E  
 CORE: 2X  
 SECTION: CC  
 TOP DEPTH (m CSF):

PIECE #	GRAPHIC REPRESENTATION	DRILLING DISTURB.	STRUCTURES	SAMPLES	COLOR
0					
50					
100					
150					

**SECTION DESCRIPTION**

Mudstone,  
 with a layer of  
 dark-brown claystone  
 (relatively soft) in  
 26-33 cm.

$\frac{4}{10GY}$   
 $\frac{3}{2} YR - SS$   
 (27.5cm)  
 $\frac{4}{10GY}$

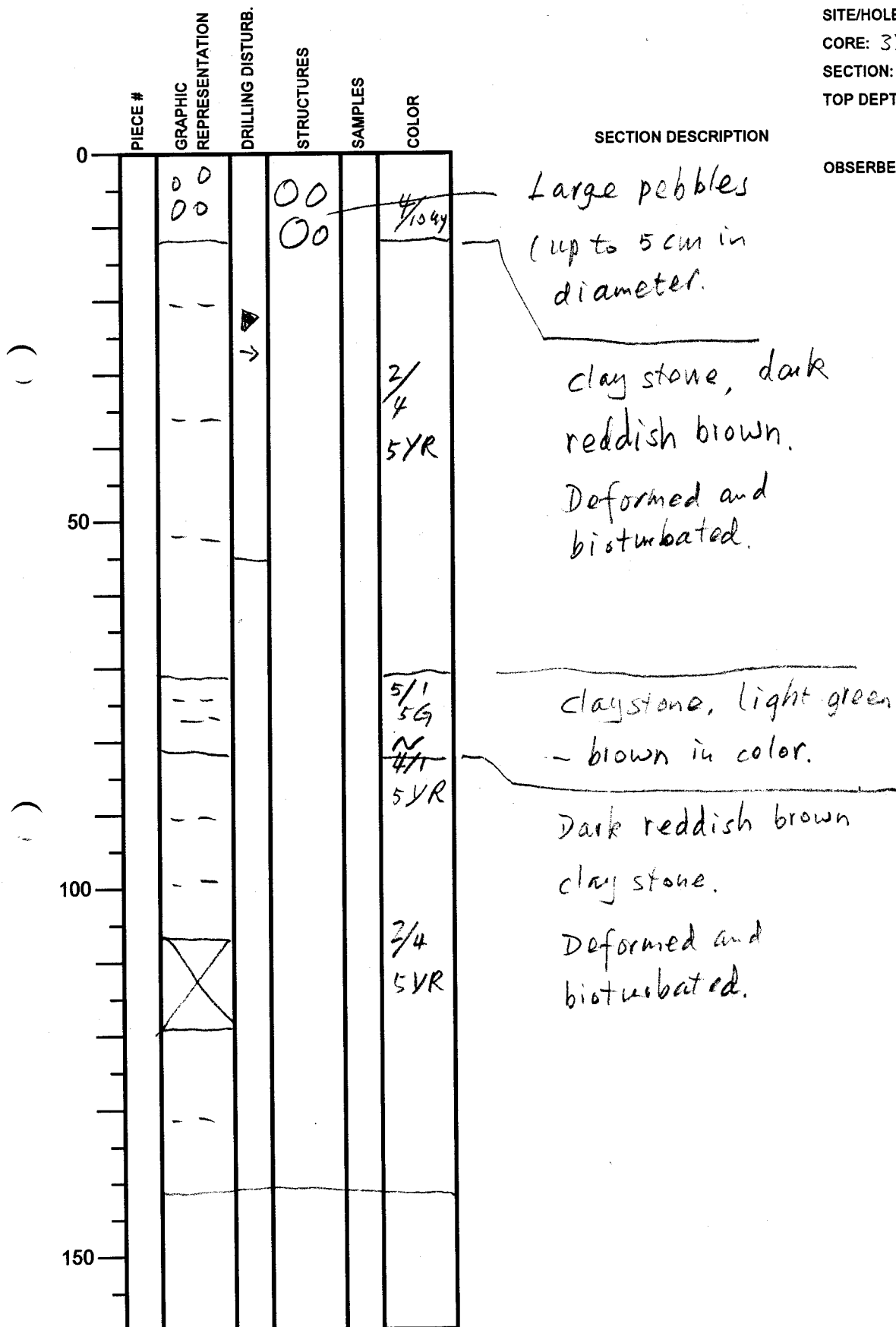
OBSERVER: S Gas

# Integrated Ocean Drilling Program

## Visual Core Description

NO. 850  
 DATE: 2/1/2011  
 EXP.: 333  
 SITE/HOLE: 0002 E  
 CORE: 3X  
 SECTION: 1  
 TOP DEPTH (m CSF):

OBSERVER: S Gao



# Integrated Ocean Drilling Program

## Visual Core Description

NO. 851  
 DATE: 2/1/2011  
 EXP.: 333  
 SITE/HOLE: C0012E  
 CORE: 3X  
 SECTION: 3  
 TOP DEPTH (m CSF):

OBSERVER: S Gao

	PIECE #	GRAPHIC REPRESENTATION	DRILLING DISTURB.	STRUCTURES	SAMPLES	COLOR
0		---				2/4
		---				5YR
		X				
50		---				3/1
		* ---				5Y
		X				
100						
150						

SECTION DESCRIPTION

claystone.

claystone,  
Olive black color.

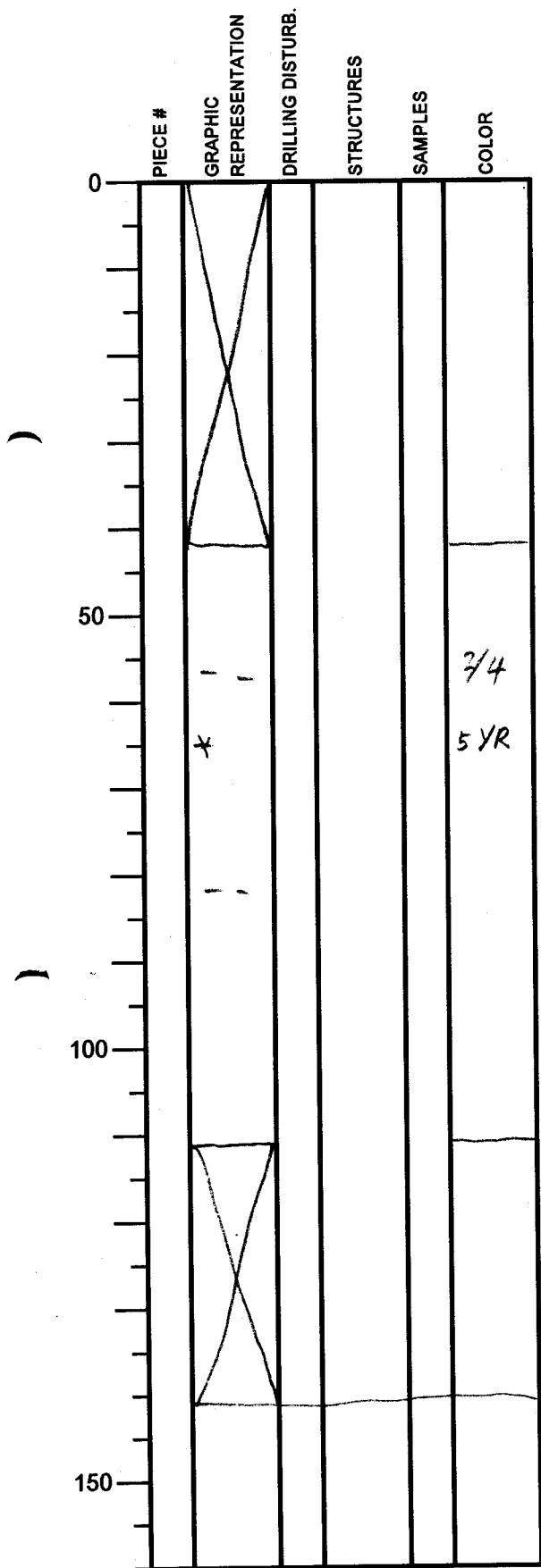
- SS  
(70 cm)



# Integrated Ocean Drilling Program Visual Core Description

NO. 852  
 DATE: 2/1/2011  
 EXP.: 333  
 SITE/HOLE: C0012E  
 CORE: 3X  
 SECTION: 4  
 TOP DEPTH (m CSF):

OBSERVER: S Gao



SECTION DESCRIPTION

Dark reddish brown  
 claystone, with light  
 green layers at  
 43-45 and 61-66 cm.

# Integrated Ocean Drilling Program

## Visual Core Description

NO. 853  
 DATE: 2/1/2011  
 EXP.: 332  
 SITE/HOLE: C0012E  
 CORE: 3X  
 SECTION: 5  
 TOP DEPTH (m CSF):

OBSERVER: S Gao

	PIECE #	GRAPHIC REPRESENTATION	DRILLING DISTURB.	STRUCTURES	SAMPLES	COLOR
0						
50					4/3 7.5YR	
100						
150						

### SECTION DESCRIPTION

Brown claystone,  
 with black dots  
 (originally ash?)  
 Layered.

# Integrated Ocean Drilling Program

## Visual Core Description

NO. 854  
 DATE: 2/1/2011  
 EXP.: 333  
 SITE/HOLE: 0012E  
 CORE: 3X  
 SECTION: 7  
 TOP DEPTH (m CSF):

OBSERVER: SGao

	PIECE #	GRAPHIC REPRESENTATION	DRILLING DISTURB.	STRUCTURES	SAMPLES	COLOR
0						
50		- -			4/3 7.5YR	
100		- -	▽ ↓		4/3 7.5YR ⋮ 4/2 5Y	
150		- -			2/4 5YR	
200		┌┐ └┘ ┌┐			2/1 5B	

### SECTION DESCRIPTION

Brown claystone  
 (dark brown at  
 13-18 cm and  
 43-50 cm).

---

claystone, color  
 changes progressively  
 to greyish olive.

---

Dark reddish brown  
 clay, overlying on  
 base rock.

---

Bluish black basalt,  
 with ash layers

# Integrated Ocean Drilling Program

## Visual Core Description

NO. 855  
 DATE: 2/1/2011  
 EXP.: 333  
 SITE/HOLE: C0012E  
 CORE: 3X  
 SECTION: 8  
 TOP DEPTH (m CSF):

	PIECE #	GRAPHIC REPRESENTATION	DRILLING DISTURB.	STRUCTURES	SAMPLES	COLOR
0						
10		∩				3/1 5P
20		* ∩				
30		∩				
40		∩				
50		∩				
60		∩				
70		∩				2/1 5B
80						
90						
100						
110						
120						
130						
140						
150						

### SECTION DESCRIPTION

OBSERVER: SGao

Purplish black to bluish black basalt, with two greenish layer in 25-30 cm and 52-59 cm (large quartz) crystals are present here).

\*-SS (26cm)

# Integrated Ocean Drilling Program Visual Core Description

NO. 856  
 DATE: 2/1/2011  
 EXP.: 333  
 SITE/HOLE: C0012 E  
 CORE: 3X  
 SECTION: CC  
 TOP DEPTH (m CSF):

	PIECE #	GRAPHIC REPRESENTATION	DRILLING DISTURB.	STRUCTURES	SAMPLES	COLOR
0						
50						2/1 5PB
100						
150						

**SECTION DESCRIPTION**

Bluish black  
 basalt, with  
 "captured" sedimentary  
 rock fragments.

OBSERVER: S Gas