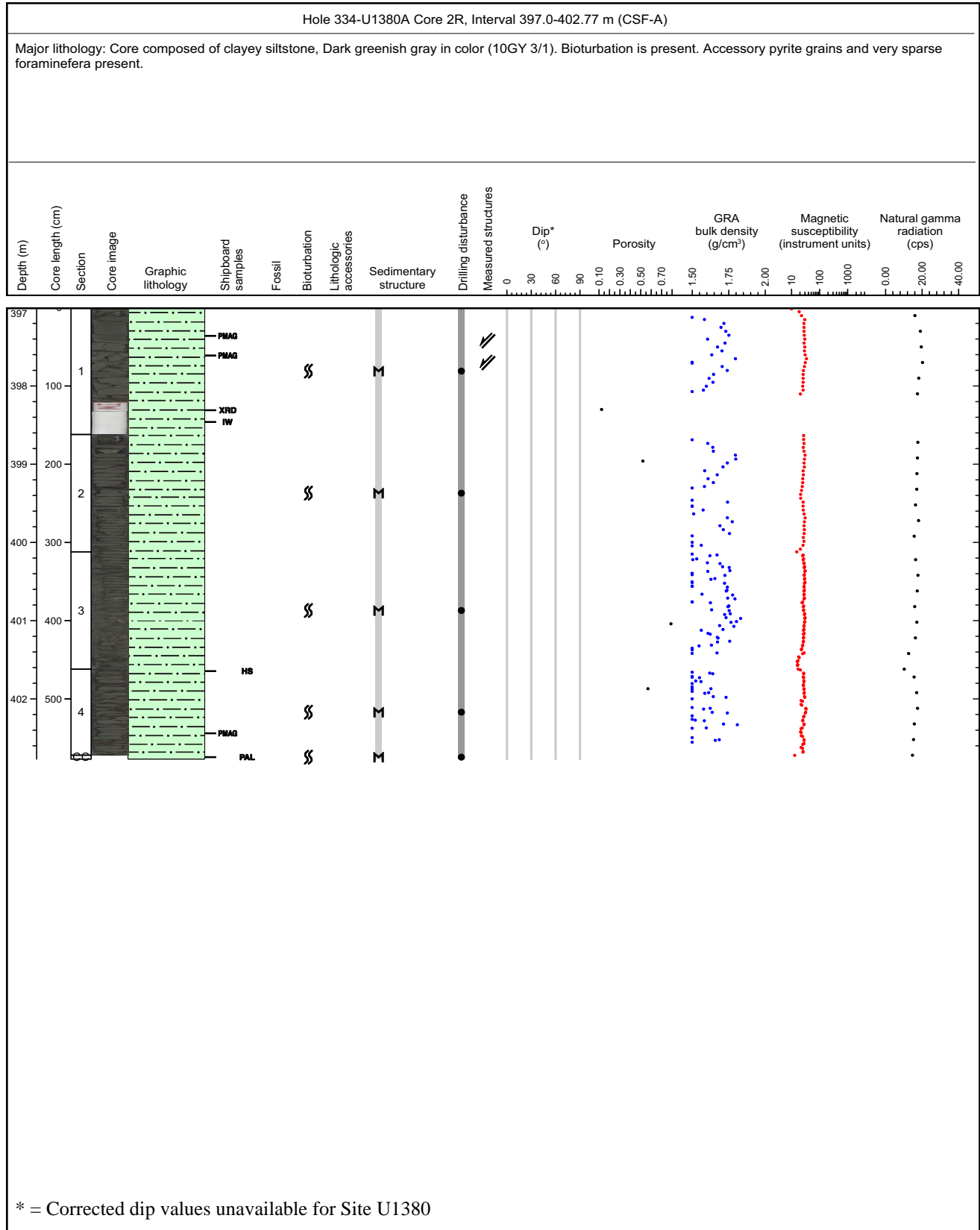


Core Photo

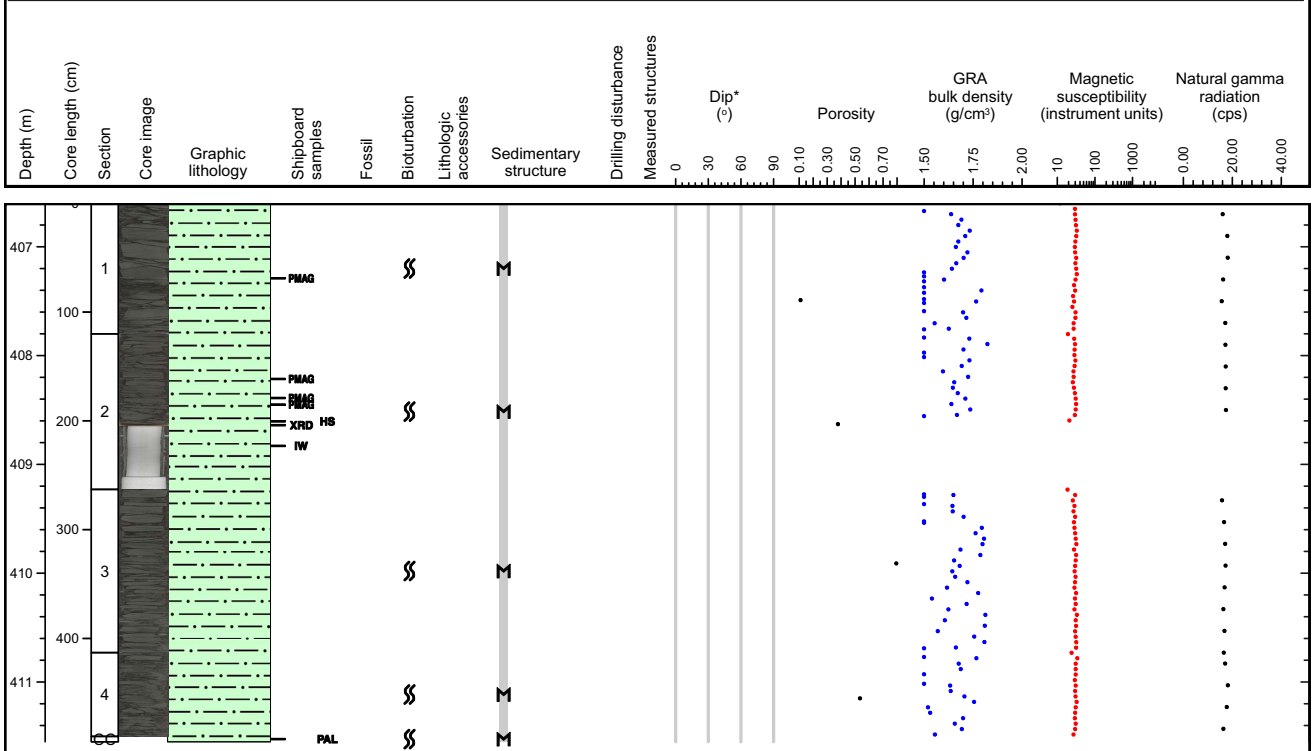
U1380A-11 Drilled interval



Core Photo

Hole 334-U1380A Core 3R, Interval 406.6-411.55 m (CSF-A)

Major lithology: Core composed of masive clayey siltstone, Dark greenish gray in color (10GY 3/1). Accessory pyrite grains up to medium-sand size, localized shell fragments and macroforanifera are present.



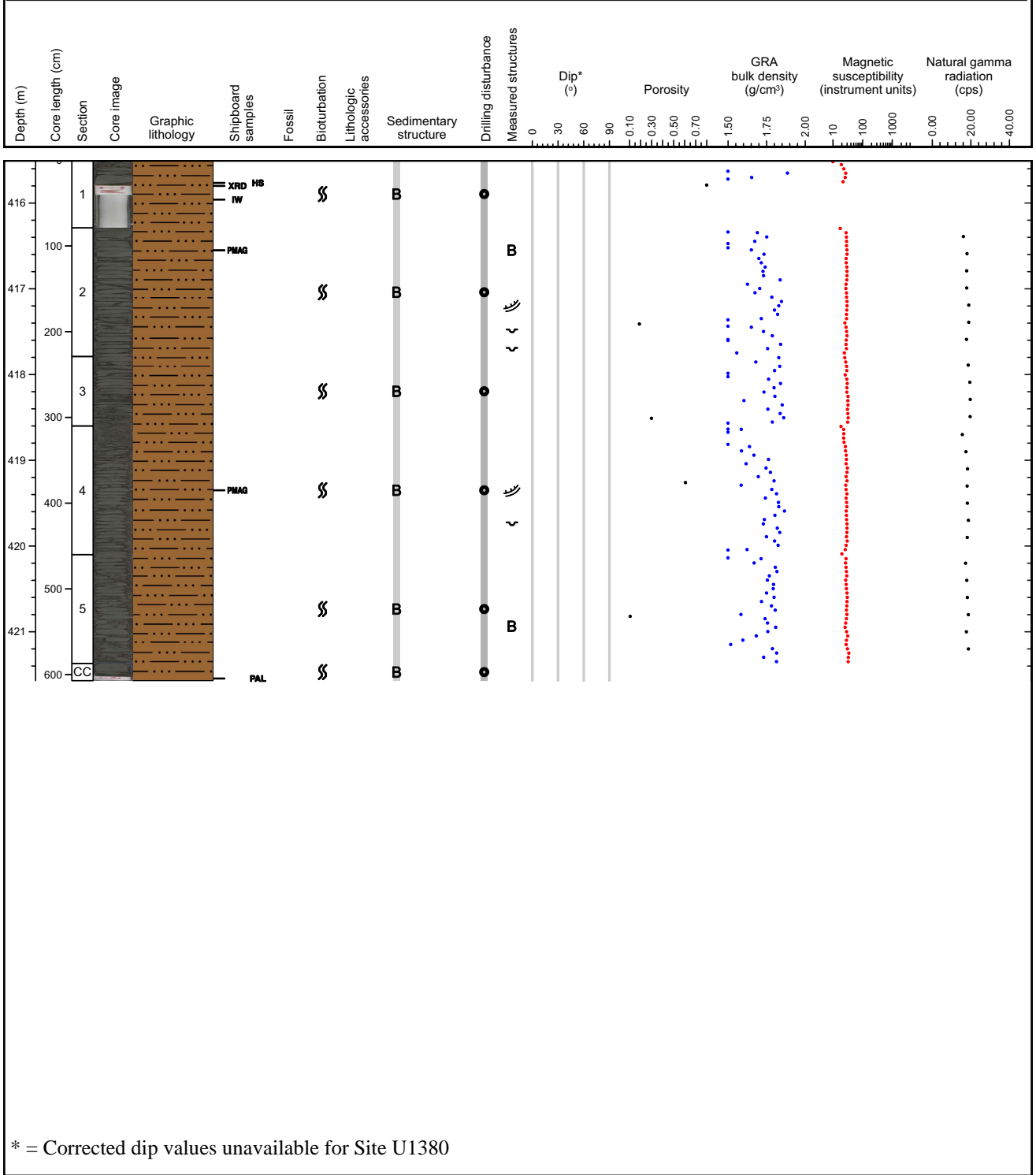
* = Corrected dip values unavailable for Site U1380



Core Photo

Hole 334-U1380A Core 4R, Interval 415.5-421.57 m (CSF-A)

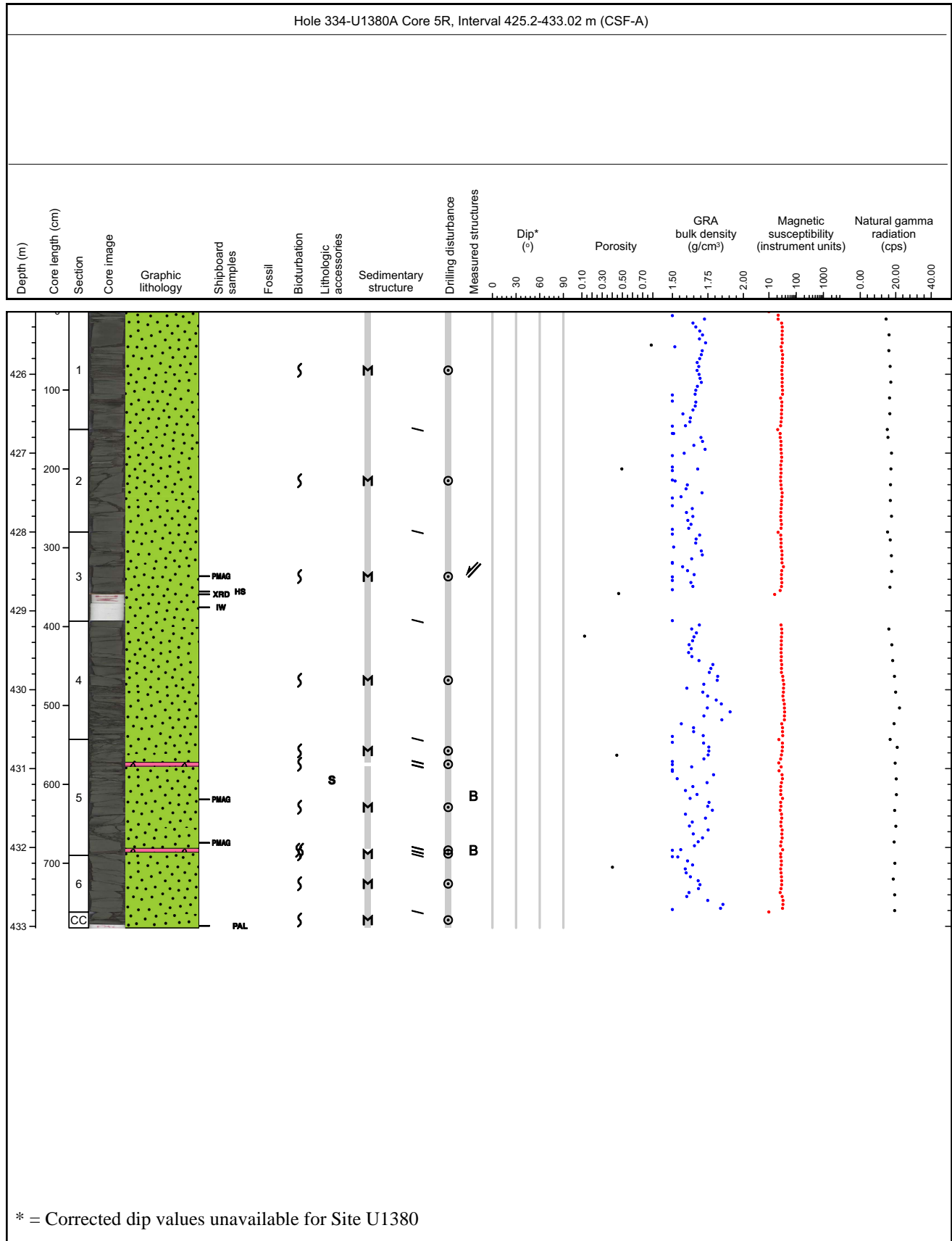
Major lithology: Core composed of clayey siltstone with frequent cm-thick sandy horizons interspersed. Dark greenish gray in color (10GY 3/1). Sparse shell fragments and macroforaminifera are present.



* = Corrected dip values unavailable for Site U1380



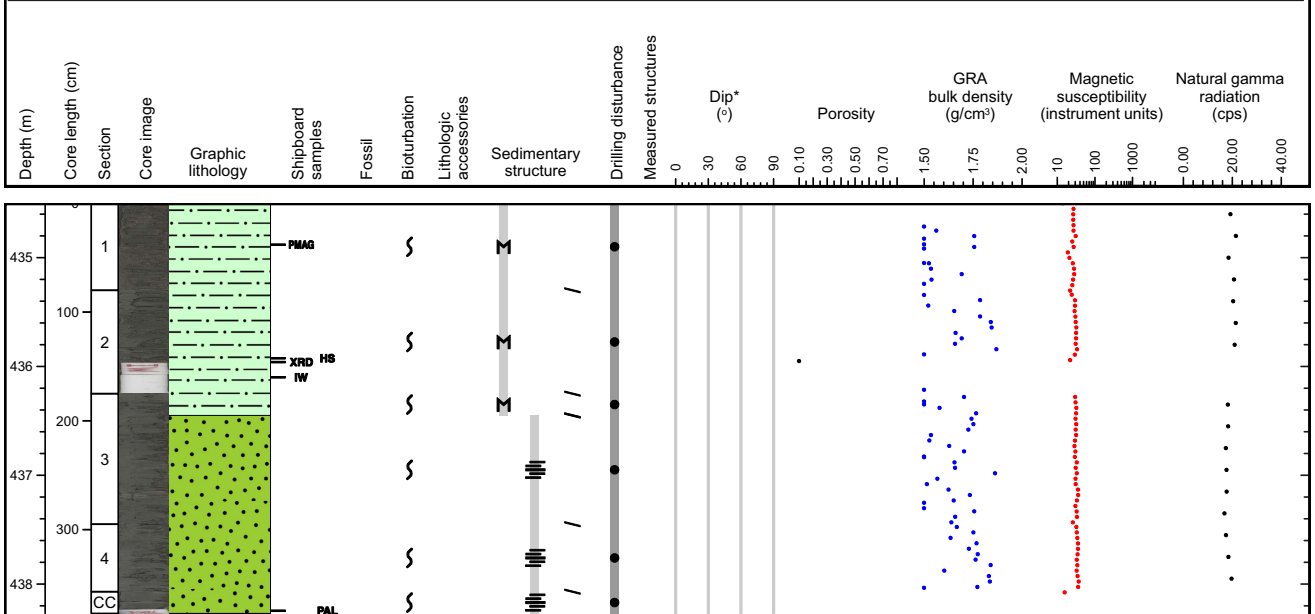
Core Photo



Core Photo

Hole 334-U1380A Core 6R, Interval 434.5-438.27 m (CSF-A)

Major Lithology: Core is composed of dark greenish gray sandy clayey silt and clayey silt. The upper unit is massive, the bottom unit is fining upward and contains laminations picked out but black organic material. No bioturbation is apparent.



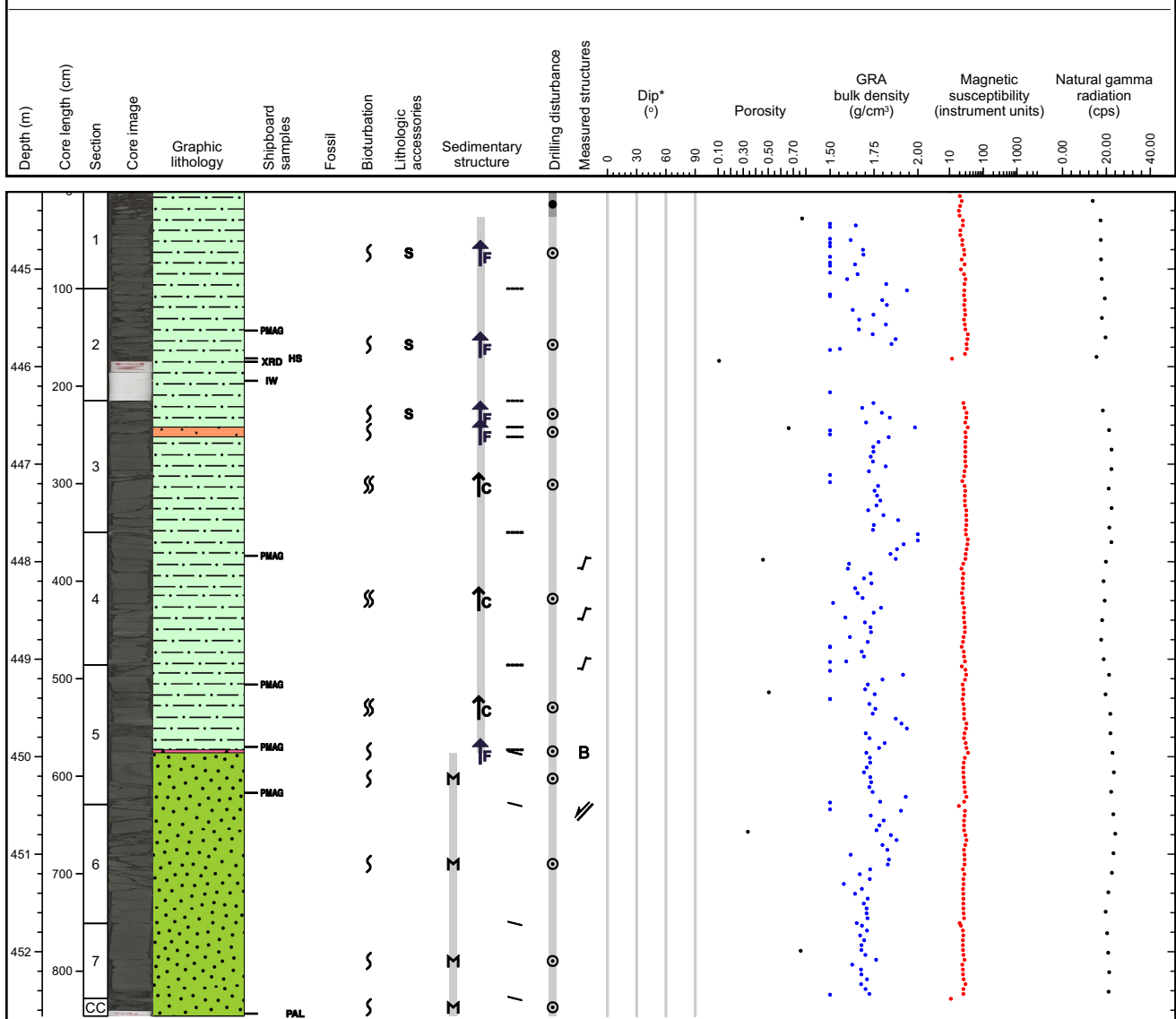
* = Corrected dip values unavailable for Site U1380



Core Photo

Hole 334-U1380A Core 7R, Interval 444.2-452.66 m (CSF-A)

Major Lithology: Greenish gray clayey silt to clayey silty sand. Some units may be fining or coarsening upwards. Contains little bioturbation and only small foraminifera. Tephra pods are present in Sections 1 and 2. One black tephra layer is present in Section 5: 87 - 90cm.



* = Corrected dip values unavailable for Site U1380

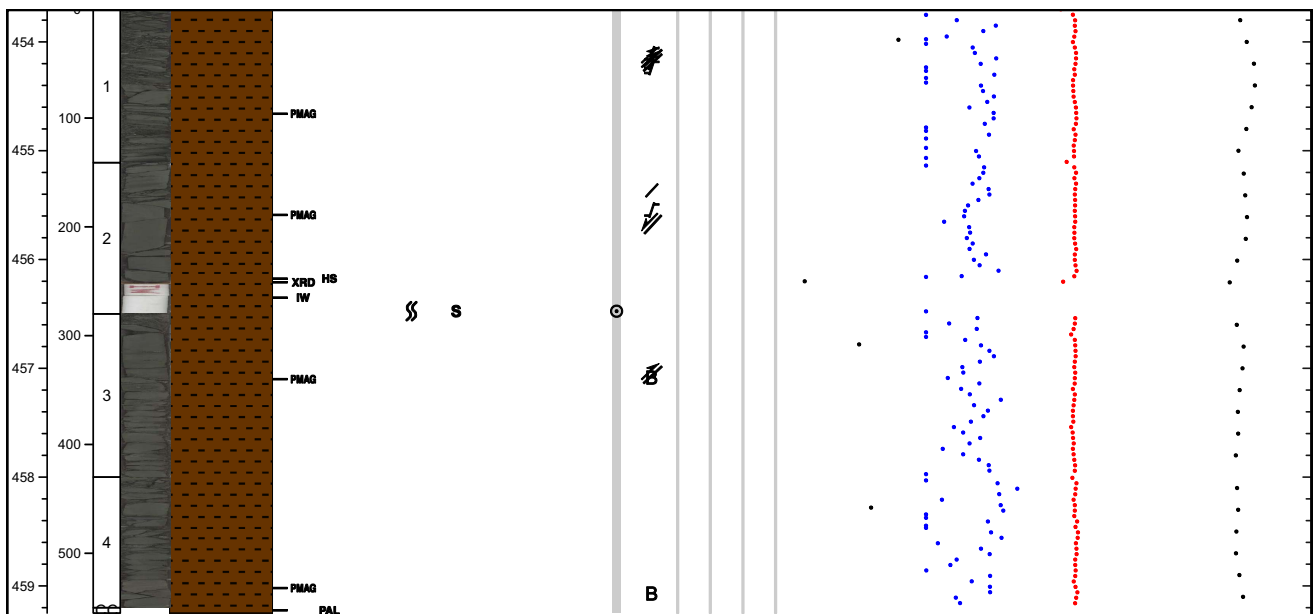


Core Photo

Hole 334-U1380A Core 8R, Interval 453.7-459.25 m (CSF-A)

Major lithology: Massive greenish black silty claystone. Highly fractured horizons are abundant within massive silty claystone. Fracturing at: section 1 at 24 to 36 cm, 57 to 70 cm, 107 to 116 cm, section 3 at 0 to 15 cm.

Depth (m)	Core length (cm)	Section	Core image	Graphic lithology	Shipboard samples	Fossil	Bioturbation	Lithologic accessories	Sedimentary structure	Drilling disturbance	Measured structures	Dip* (°)	Porosity	GRA bulk density (g/cm ³)	Magnetic susceptibility (instrument units)	Natural gamma radiation (cps)
-----------	------------------	---------	------------	-------------------	-------------------	--------	--------------	------------------------	-----------------------	----------------------	---------------------	----------	----------	---------------------------------------	--	-------------------------------



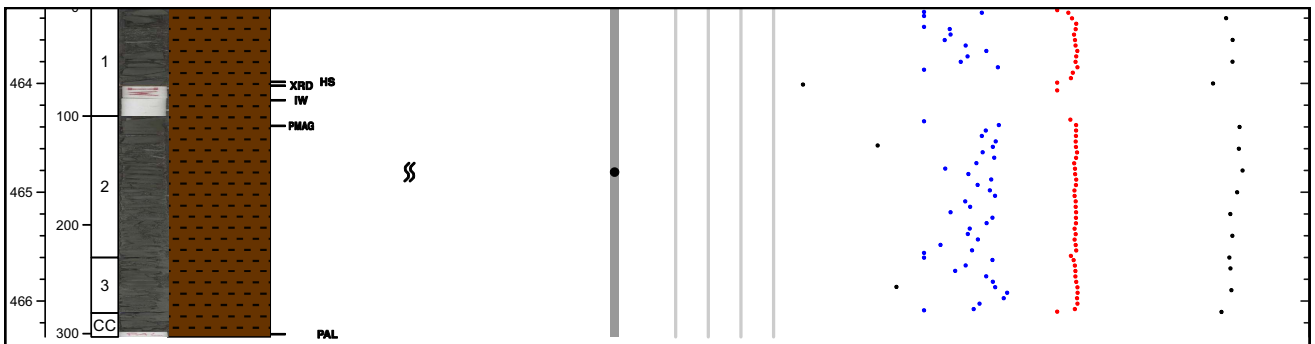
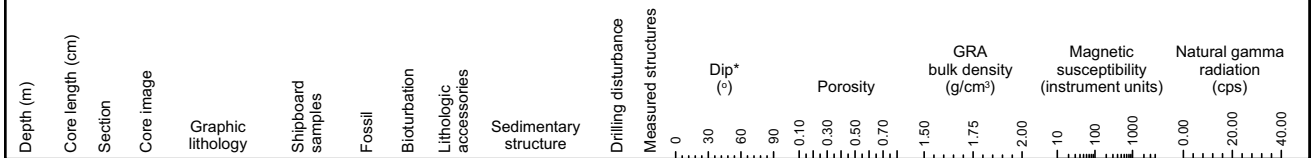
* = Corrected dip values unavailable for Site U1380



Core Photo

Hole 334-U1380A Core 9R, Interval 463.3-466.33 m (CSF-A)

Major lithology: Massive greenish black silty claystone. Highly fractured horizon within massive silty claystone in section 1 between 13 to 40 cm.



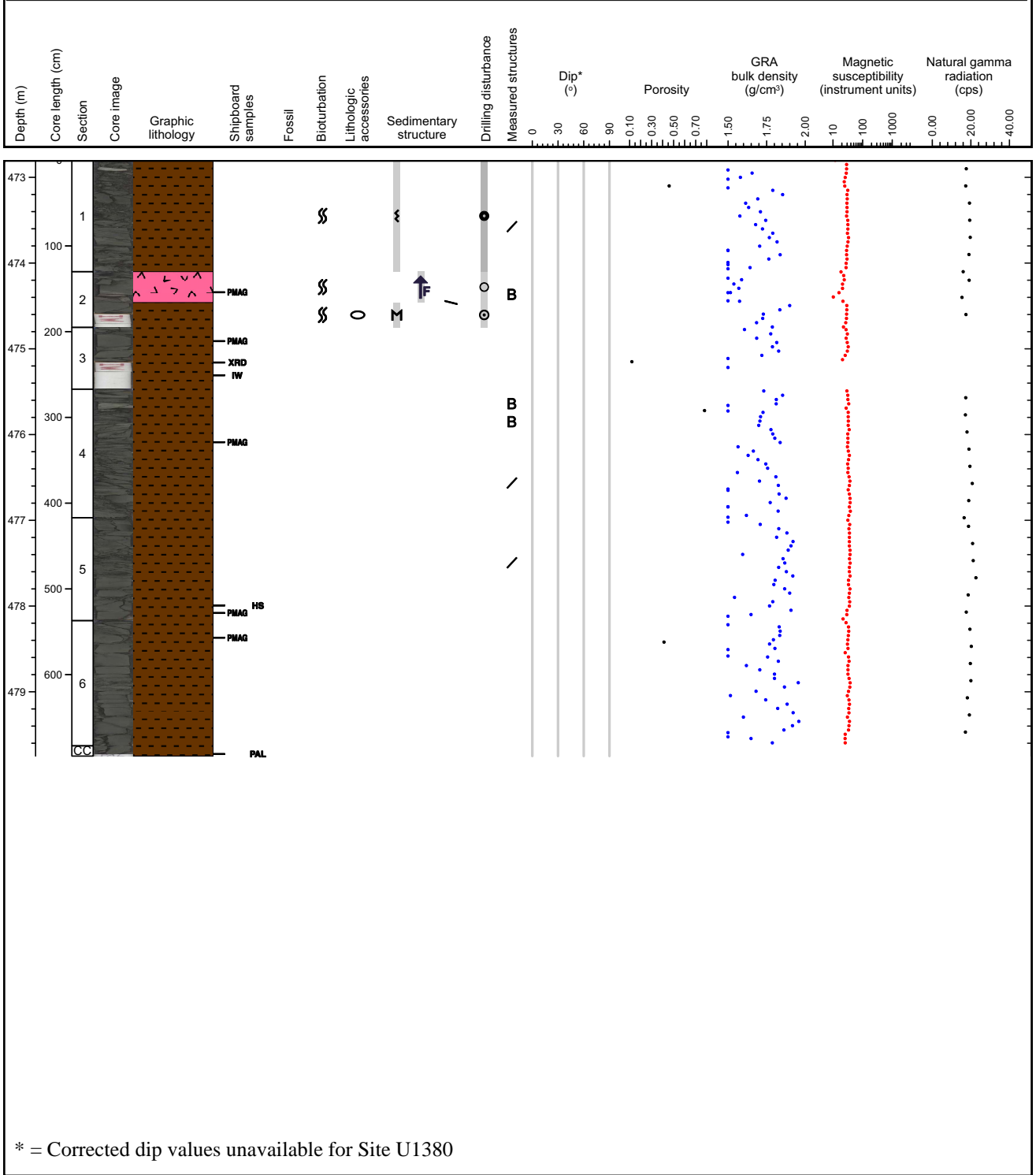
* = Corrected dip values unavailable for Site U1380



Core Photo

Hole 334-U1380A Core 10R, Interval 472.8-479.75 m (CSF-A)

Major Lithology: Massive, greenish black, silty clay, partly fractured in Section 1, Section 4 and Section 5. Bioturbation is present. No foraminifera are visible. One tephra layer present in Section 2 between 0 - 36cm. Pinkish gray in color.



* = Corrected dip values unavailable for Site U1380





Sample1	Top [cm]	Botto m [cm]	Top Depth [m]	Botto m Depth [m]	Sand texture (%)	Silt texture (%)	Clay texture (%)	Lithic grain	Volcanic glass	Quartz	Pyroxene	Feldspar	Mica	Oxide	Opaque minerals	Calcite	Dolomite	Glauconite	Pyrite	Chlorite	Clay	Mineral grains (undiff.)	Nannofossils	Foraminifers	Radiolarians	Diatoms	Ostracods	Silicoflagellates	Sponge spicules	Shell fragments	Constituents comment	
334-U1380A-4R-2-A	20.00	20.00	416.49	416.49	30	50	20	A[330]	C[330]	F	F	C[330]		R[330]	F	F			F	C[330]		R[330]	F	F					F	MINERAL GRAINS UNDIFF - AMPHIBOLE		
334-U1381A-5R-1-A	45.00	45.00	32.35	32.35		20	80	C[330]	C[330]	R[330]	R[330]	C[330]		F	F	C[330]			C[330]	F			F	F					C[330]	MINERAL GRAINS UNDIFF - AMPHIBOLE		
334-U1381A-6R-CC-A	2.00	2.00	49.48	49.48	30	50	20	C[330]	C[330]			C[330]		F	R[330]	A[330]			C[330]	F			F	C[330]					C[330]	MINERAL GRAINS UNDIFF - AMPHIBOLE		
334-U1381A-7R-1-A	22.00	22.00	51.32	51.32	20	20	60	C[330]	A[330]			F			R[330]	C[330]														A[330]		
334-U1381A-7R-2-A	45.00	45.00	52.71	52.71	20	20	60	C[330]	C[330]			F			R[330]	C[330]									C[330]					A[330]		
334-U1381A-10R-2-A	50.00	50.00	81.98	81.98	10	10	80	C[330]	F			F			R[330]	C[330]														C[330]		
334-U1381A-10R-2-A	70.00	70.00	82.18	82.18	10	10	80	A[330]	A[330]			F			C[330]	F														C[330]		
334-U1381A-11R-1-A	118.00	118.00	90.68	90.68	10	10	80	A[330]	A[330]			F			C[330]	F														C[330]		
334-U1380A-5R-5-A	33.00	33.00	430.96	430.96																												TEPHRA
334-U1380A-5R-5-A	139.00	139.00	432.02	432.02																												TEPHRA
334-U1380A-5R-5-A	143.00	143.00	432.06	432.06																												TEPHRA
334-U1380A-7R-5-A	91.00	91.00	449.97	449.97																												TEPHRA
334-U1380A-10R-2-A	34.00	34.00	474.44	474.44																												TEPHRA