

SEM-EDX observation sheet

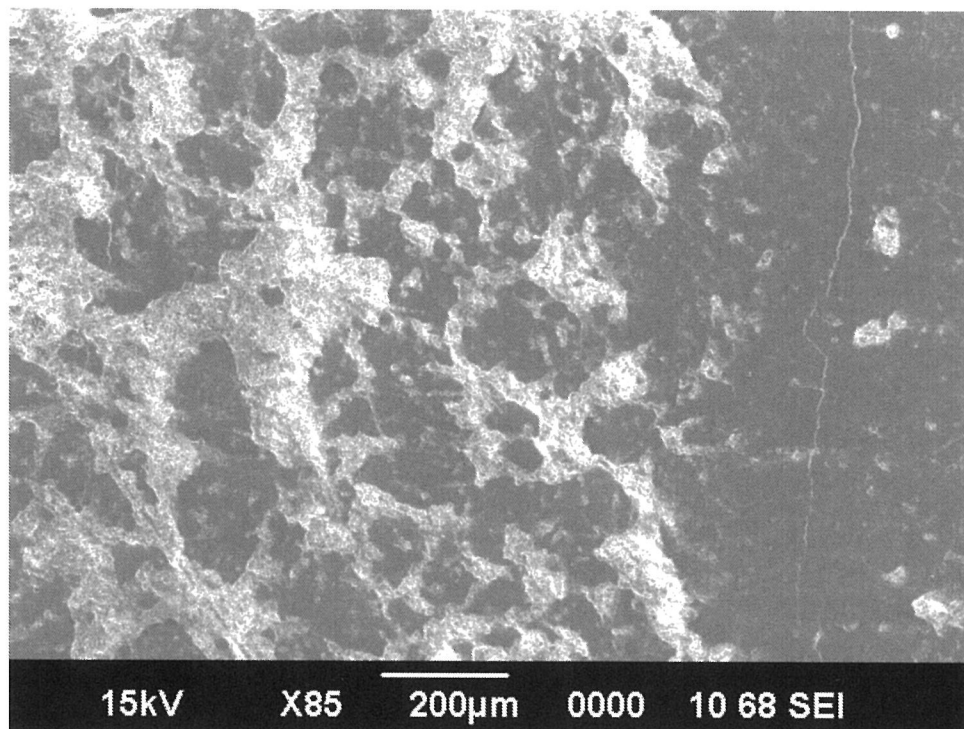
Date Apr. 30, 2013

Expedition: 338

Observer: YS, OF, KO

Site: C0002 Hole: J Core: 1R Sec.: 4 Interval: 7.5-9.5

Sediment name: Silty mudstone



Clasts appear much compacted in an about 0.8cm thick shear zone of silty mudstone.

SEM-EDX observation sheet

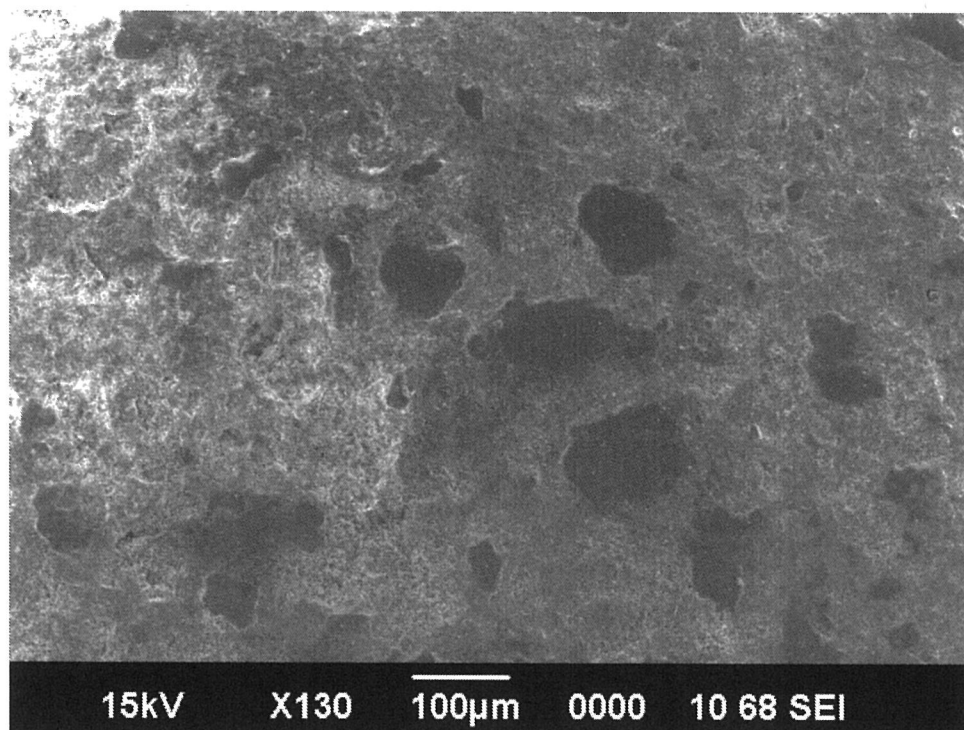
Date Apr. 30, 2013

Expedition: 338

Observer: YS, OF, KO

Site: C0002 Hole: J Core: 1R Sec.: 4 Interval: 7.5-9.5

Sediment name: Silty mudstone



Clasts appear loosely compacted in silty mudstone. C0002J Core 1R-Sec. 4
Int. 7.5-9.5 TSS.