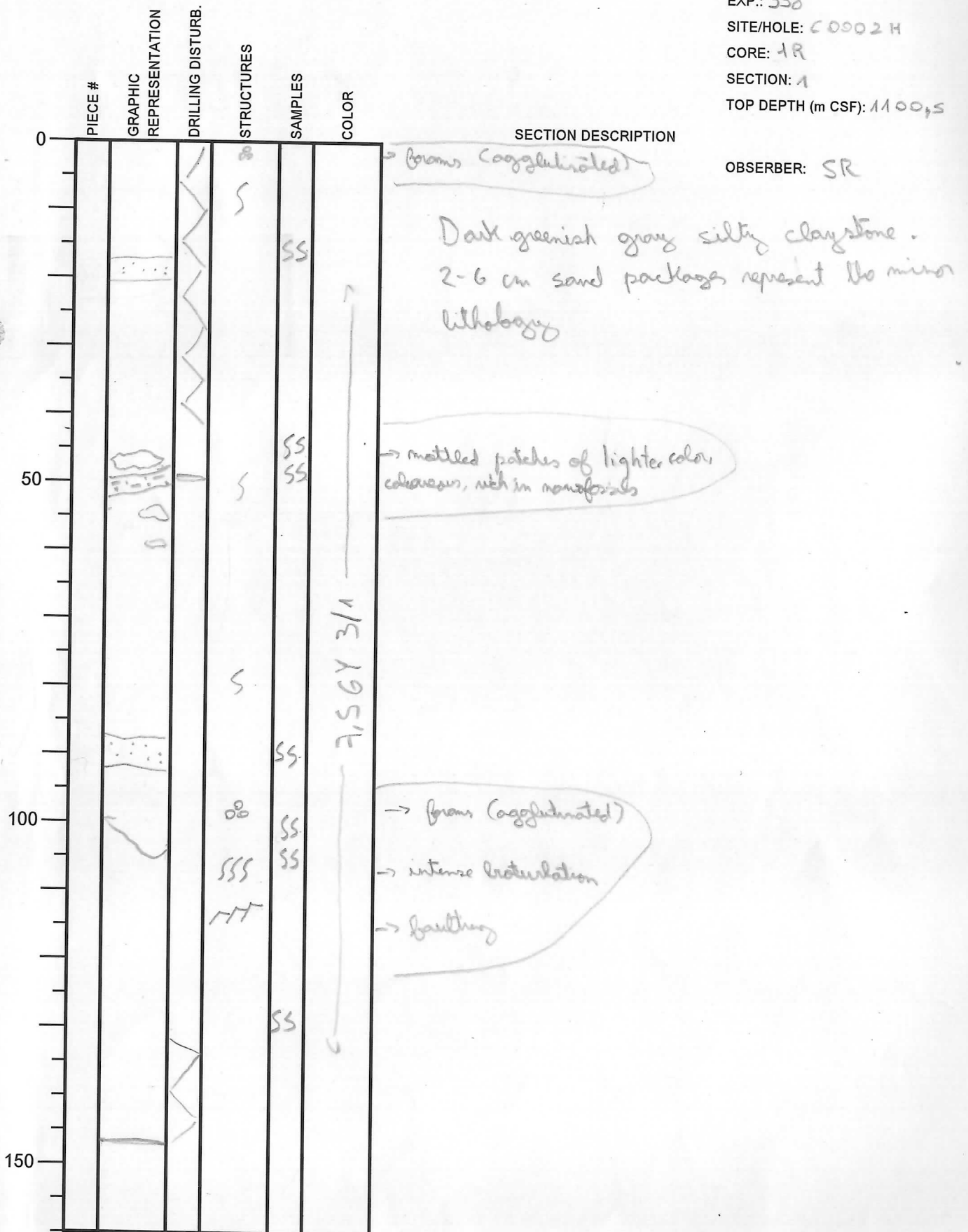


# Integrated Ocean Drilling Program Visual Core Description

NO. 1  
 DATE: 11/12/2012  
 EXP.: 338  
 SITE/HOLE: C0002 H  
 CORE: 1R  
 SECTION: 1  
 TOP DEPTH (m CSF): 1100.5

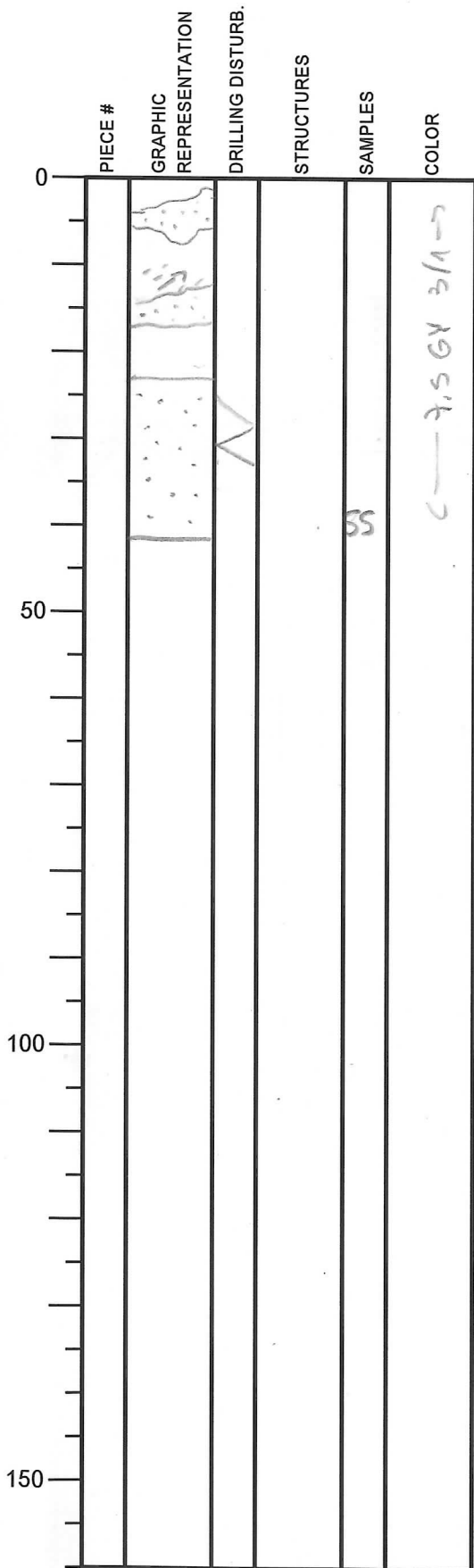
OBSERVER: SR



# Integrated Ocean Drilling Program Visual Core Description

NO. 2  
 DATE: 11/12/2012  
 EXP.: 338  
 SITE/HOLE: 0902 H  
 CORE: 1R  
 SECTION: 2'  
 TOP DEPTH (m CSF): 1101.91

OBSERVER: SR



SECTION DESCRIPTION

→ slicken line

Dark greenish gray poorly consolidated sandstone, with silty claystone as the minor lithology

# Integrated Ocean Drilling Program

## Visual Core Description

NO. 3  
 DATE: 11/2/20 12  
 EXP.: 338  
 SITE/HOLE: 0002H  
 CORE: 2R  
 SECTION: 1  
 TOP DEPTH (m CSF): 110.5

PIECE #	GRAPHIC REPRESENTATION	DRILLING DISTURB.	STRUCTURES	SAMPLES	COLOR
0				SS	↑
50				SS	3/1
100				SS	← 564
150					

### SECTION DESCRIPTION

OBSERVER:

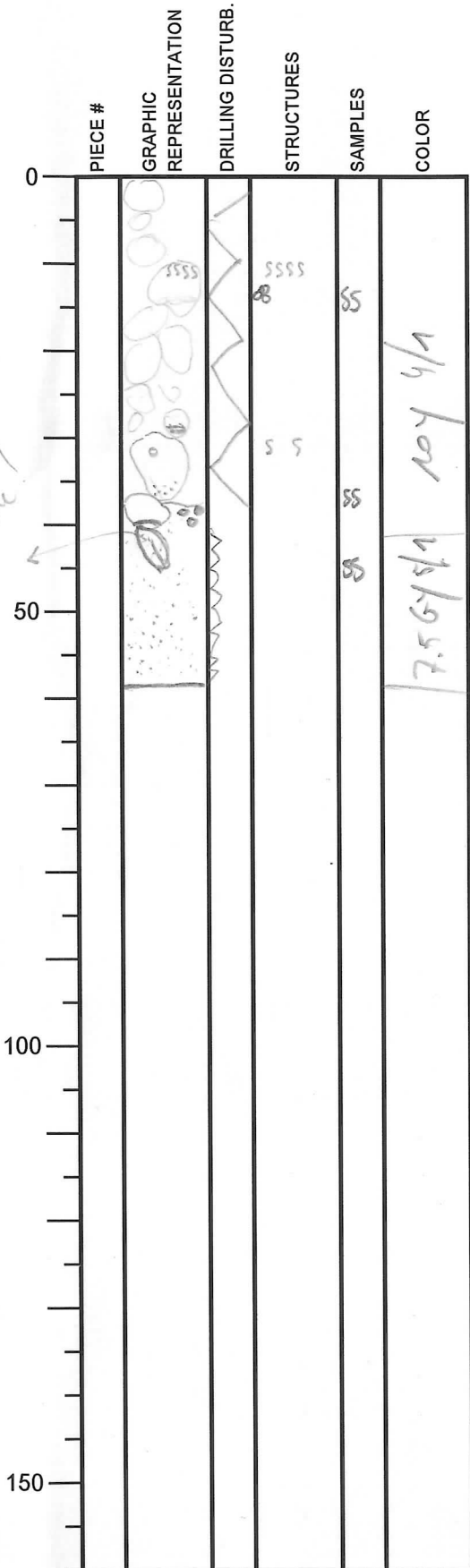
→ (poorly agglutinated)  
 → siltstone  
 Dark olive gray silty claystone with medium poorly consolidated sandstone as the main lithology.

→ cemented sandstone fragment (carbonate?)

# Integrated Ocean Drilling Program

## Visual Core Description

NO. 4  
 DATE: / / 20  
 EXP.: 338  
 SITE/HOLE: COO2H  
 CORE: 2R  
 SECTION: 4  
 TOP DEPTH (m CSF): 1110.5



Cementation  
Nochstone

### SECTION DESCRIPTION

TOT = 57 cm

OBSERVER: KAH

→ 0 - 38 cm : clayey siltstone  
 12-14 cm : Saturation  
 16 cm : black bed (± 0.5 cm)  
 30 cm : black spots  
 30-38 cm : slight Saturation  
 32.5 = small hole  
 34-38 : sandy inclusions

→ 38-40 cm : piece of siltstone on left  
 in core, upends?  
 fine sand with sharp boundary  
 more clay?

→ 40-57 cm : coarse to medium  
 sand  
 with some small  
 granules  
 between 40-45 = sandstone  
 or light metamorphic?  
 rock fragment  
 some smaller pieces between  
 41-39

12cm  
= 1st core  
(conflict-  
hole)

# Integrated Ocean Drilling Program Visual Core Description

NO. 5  
 DATE: 11/12/20  
 EXP.: 338  
 SITE/HOLE: 0902H  
 CORE: 2R  
 SECTION: 3  
 TOP DEPTH (m CSF): 1116.175

	PIECE #	GRAPHIC REPRESENTATION	DRILLING DISTURB.	STRUCTURES	SAMPLES	COLOR
0						
50		≡		%		5 GY 3/1
100		S		S		
150						

SECTION DESCRIPTION

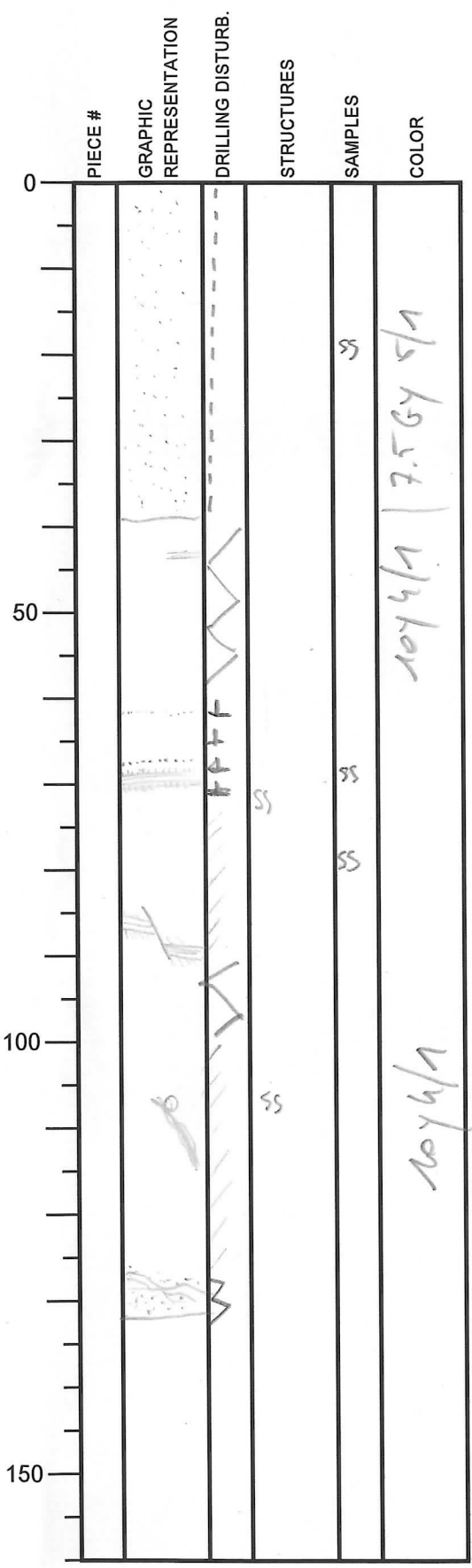
OBSERVER: SR

Dark olive gray silty claystone with poorly consolidated sandstone or the minor lithology

→ ≡ → darker (organic rich?)  
 lenses.  
 → bars (agglutinated)

# Integrated Ocean Drilling Program Visual Core Description

NO. 6  
 DATE: / / 20  
 EXP.: 338  
 SITE/HOLE: 0004H  
 CORE: 2L  
 SECTION: 3  
 TOP DEPTH (m CSF): 1111.175



**SECTION DESCRIPTION**

TOT = 131.5 CM      OBSERVER: KAH

→ 0-39 CM: coarse to medium sand with some granules

→ 39-131.5 cm = decay siltstone

39-59 cm = light fractured

39-50 cm = sand between fractures  
 (ts = dolomite??)

42.5 cm = light (thin) + black sands

---

63.5 cm = light sand (silt to fine sand?)

68 cm = black (fine sand) sand

69-72 cm = coarse zone (silt?) with 5 dark (argill?) sands ± 1mm (black) each

72-73 cm = thin (fine) sand at top

75-89 cm = fault

85-89 cm = fault

coarse (fine sand to silt) + light sand with several dark/black (argill?) sands = 1 to 4 mm (black)

90-94 = fracturing

105-114 = black micr/sand → + not deformed



93-117 argill fracturing (argill?) microlamination or deformation

118-131.5 = fine sand with several black (argill?) sands (slightly convoluted)

# Integrated Ocean Drilling Program

## Visual Core Description

NO. 7  
 DATE: 11/12/2012  
 EXP.: 338  
 SITE/HOLE: 0092 H  
 CORE: 2R  
 SECTION: CC  
 TOP DEPTH (m CSF): 1112, 485 ✓

	PIECE #	GRAPHIC REPRESENTATION	DRILLING DISTURB.	STRUCTURES	SAMPLES	COLOR
0						
50						
100						
150						

### SECTION DESCRIPTION

OBSERVER: SR

Dark olive gray silty claystone  
 with poorly cemented sandstone as the  
 main lithology

# Integrated Ocean Drilling Program

## Visual Core Description

NO. 8  
 DATE: / / 20  
 EXP.: 338  
 SITE/HOLE: C0002H  
 CORE: 2A  
 SECTION: CC  
 TOP DEPTH (m CSF): KAH

	PIECE #	GRAPHIC REPRESENTATION	DRILLING DISTURB.	STRUCTURES	SAMPLES	COLOR
0		8				
50		PAL				104 3/4
100						
150						

### SECTION DESCRIPTION

TOP = 30cm  
 (30-35.5cm = PAL)

OBSERVER:

0-10cm = heavily fractured clayey siltstone  
 5-6cm = argillaceous matrix

10-23cm = sand with siltstone fragments

10.5-11.5 = coarsely upwardly bedded  
 lighter at bottom  
 darker at top

23-30cm = heavily fractured clayey siltstone