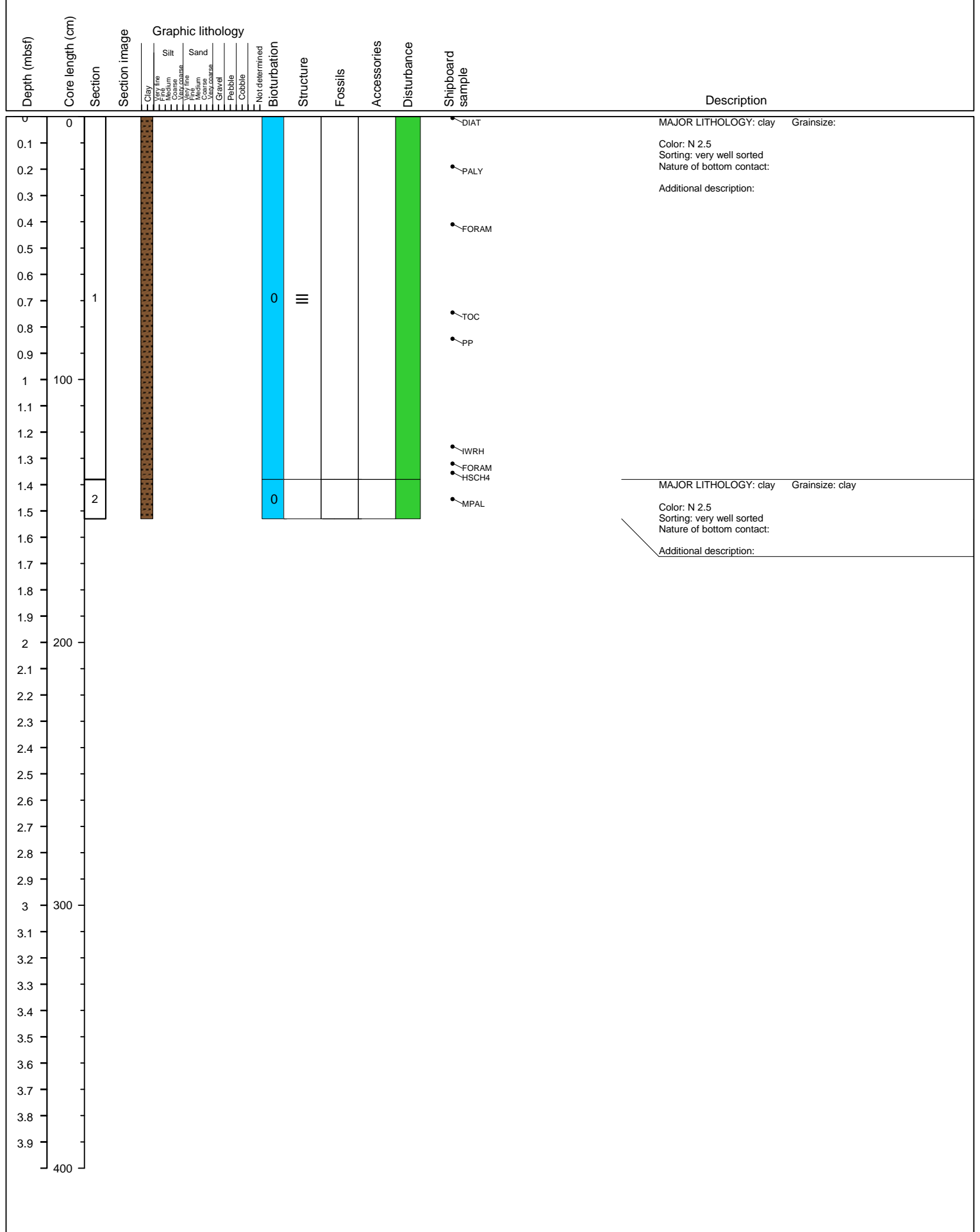
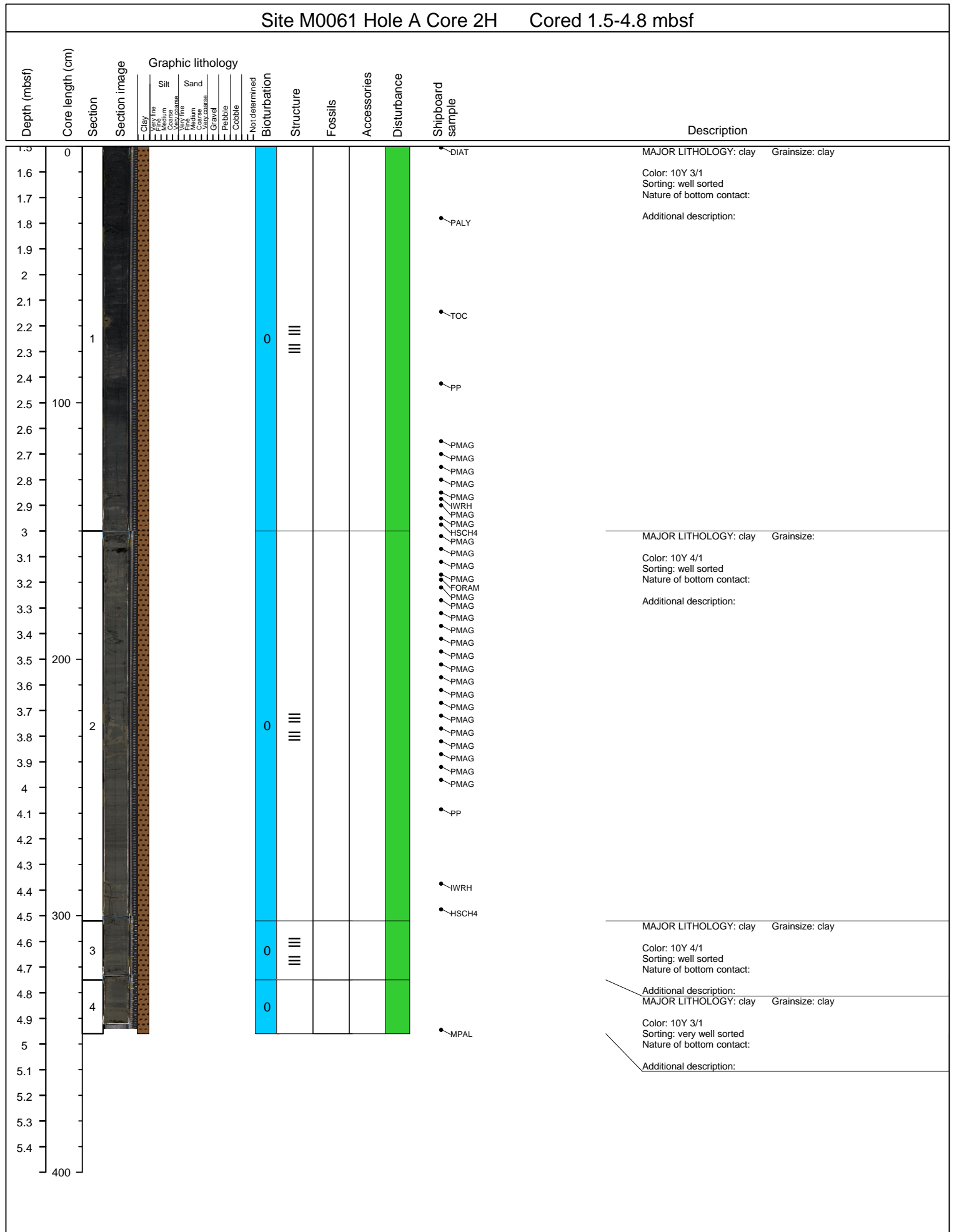
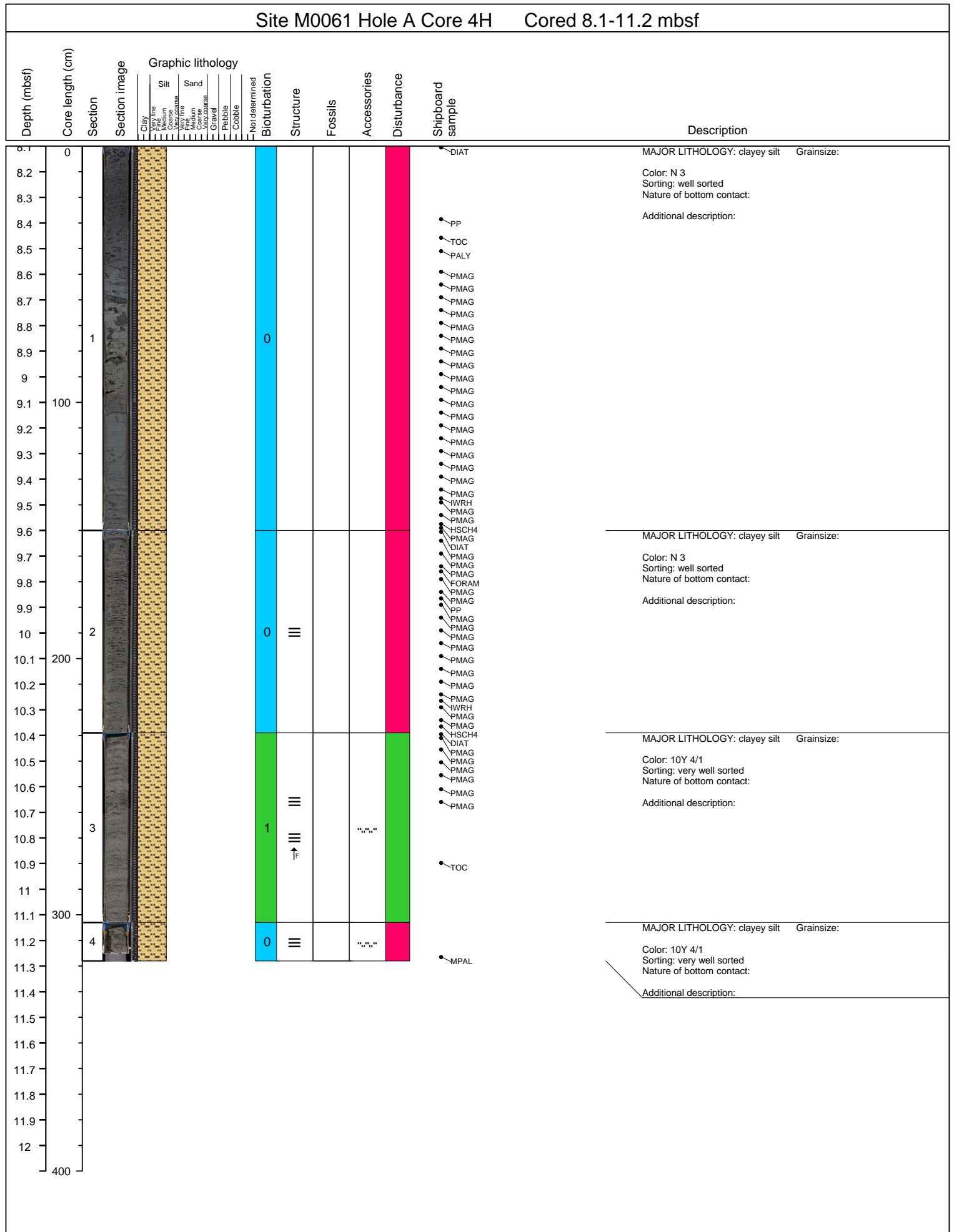


Site M0061 Hole A Core 1H Cored 0-1.5 mbsf

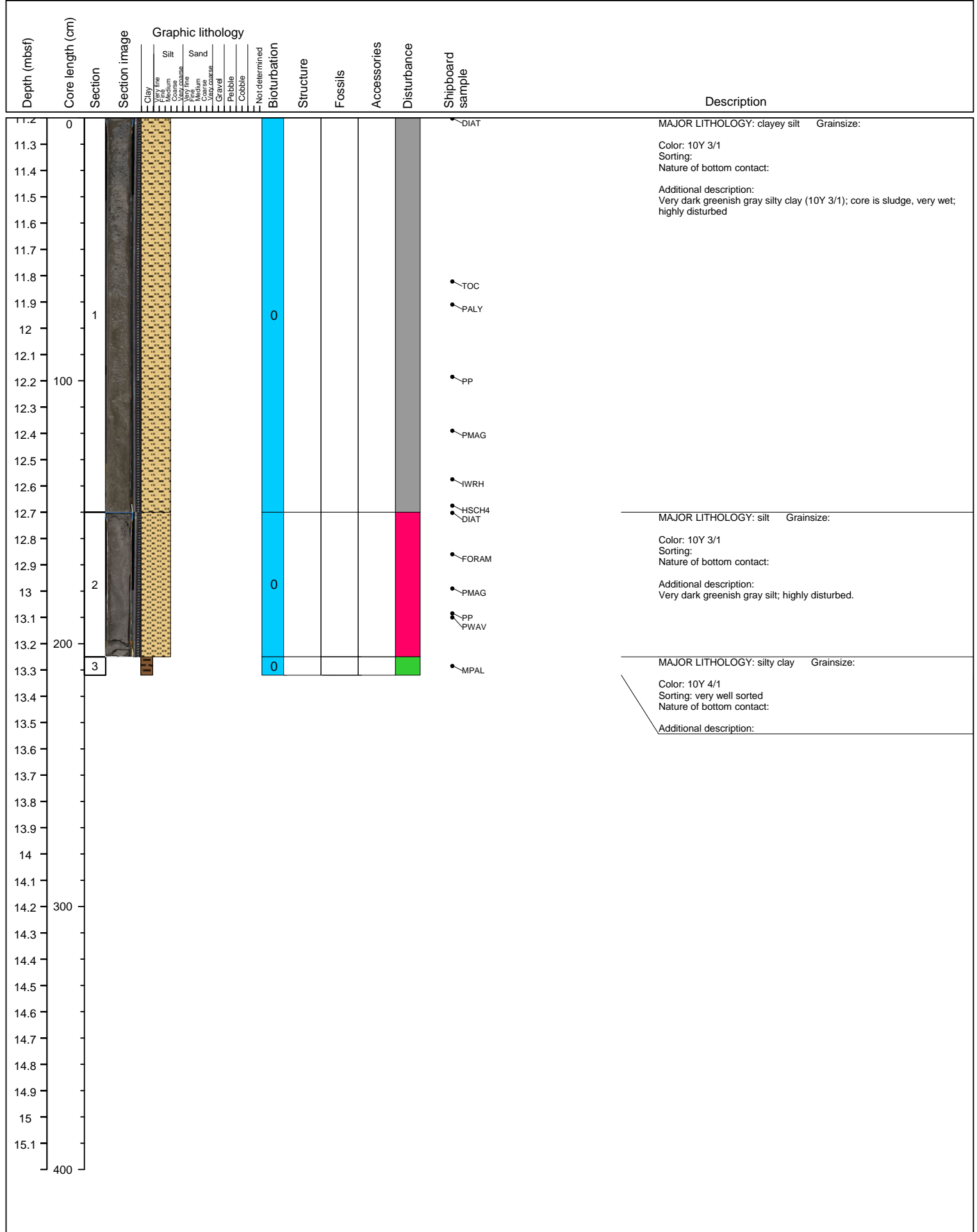




Site M0061 Hole A Core 3H Cored 4.8-8.1 mbsf																
Depth (mbsf)	Core length (cm)	Section	Section image	Graphic lithology				Shipboard sample	Description							
				Clay	Silt	Sand	Not determined	Bioturbation	Structure	Fossils	Accessories	Disturbance				
				Very fine	Very fine	Very fine										
				Medium	Medium	Medium										
				Coarse	Coarse	Coarse										
				Very coarse	Very coarse	Very coarse										
				Gravel	Gravel	Gravel										
				Pebble	Pebble	Pebble										
				Cobble	Cobble	Cobble										
4.8	0													DIAT	MAJOR LITHOLOGY: silty clay Grainsize: Color: 10Y 4/1 Sorting: very well sorted Nature of bottom contact: Additional description:	
4.9																
5.0																
5.1																
5.2																
5.3																
5.4								0								
5.5																
5.6	1															
5.7																
5.8																
5.9																
6.0	100															
6.1								0								
6.2																
6.3								0								
6.4								0								
6.5																
6.6																
6.7																
6.8	200															
6.9								0								
7.0																
7.1																
7.2																
7.3																
7.4																
7.5								0	≈							
7.6																
7.7								0								
7.8	300															
7.9								0								
8.0																
8.1																
8.2																
8.3																
8.4																
8.5																
8.6																
8.7																
8.8	400															



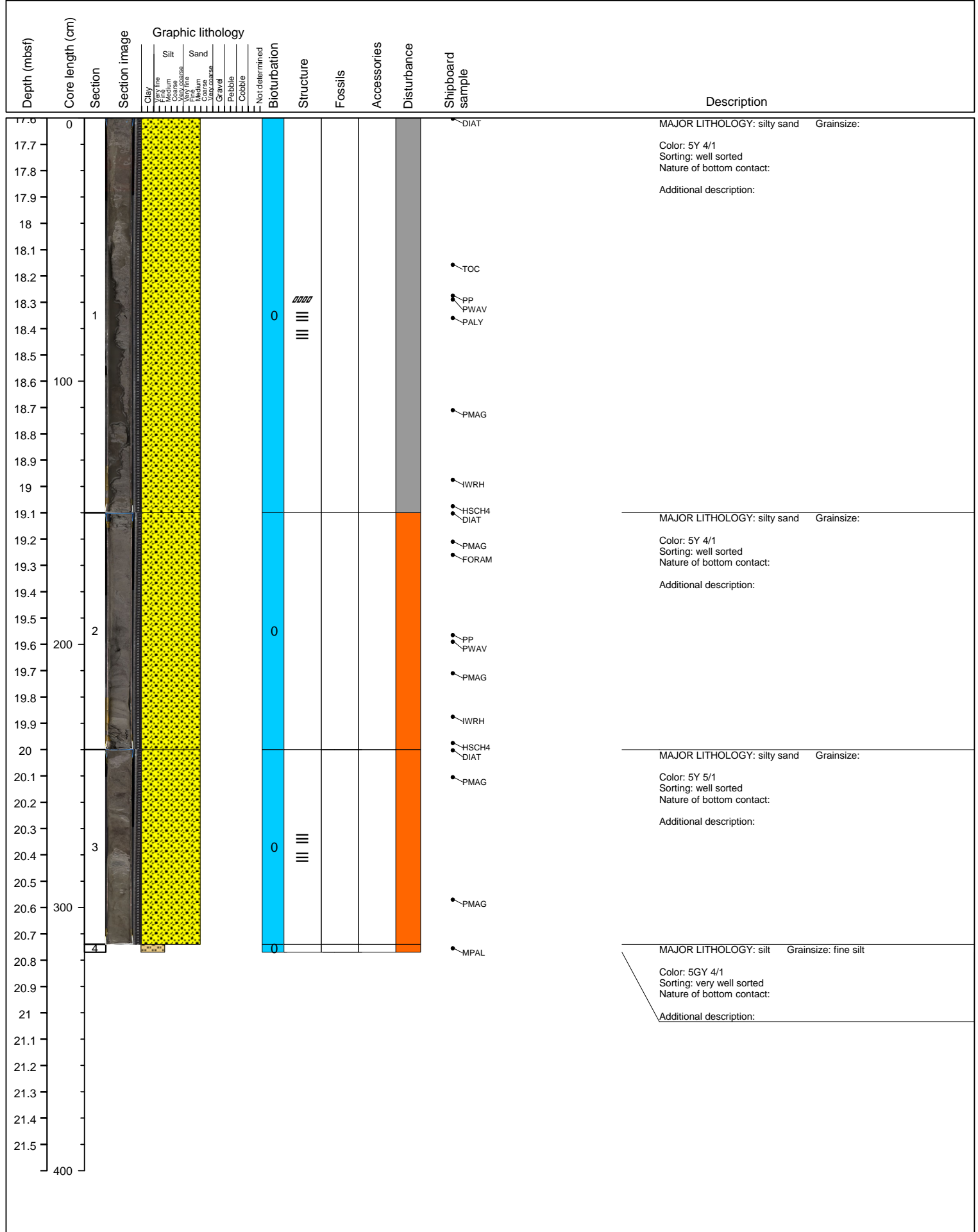
Site M0061 Hole A Core 6H Cored 11.2-14.5 mbsf



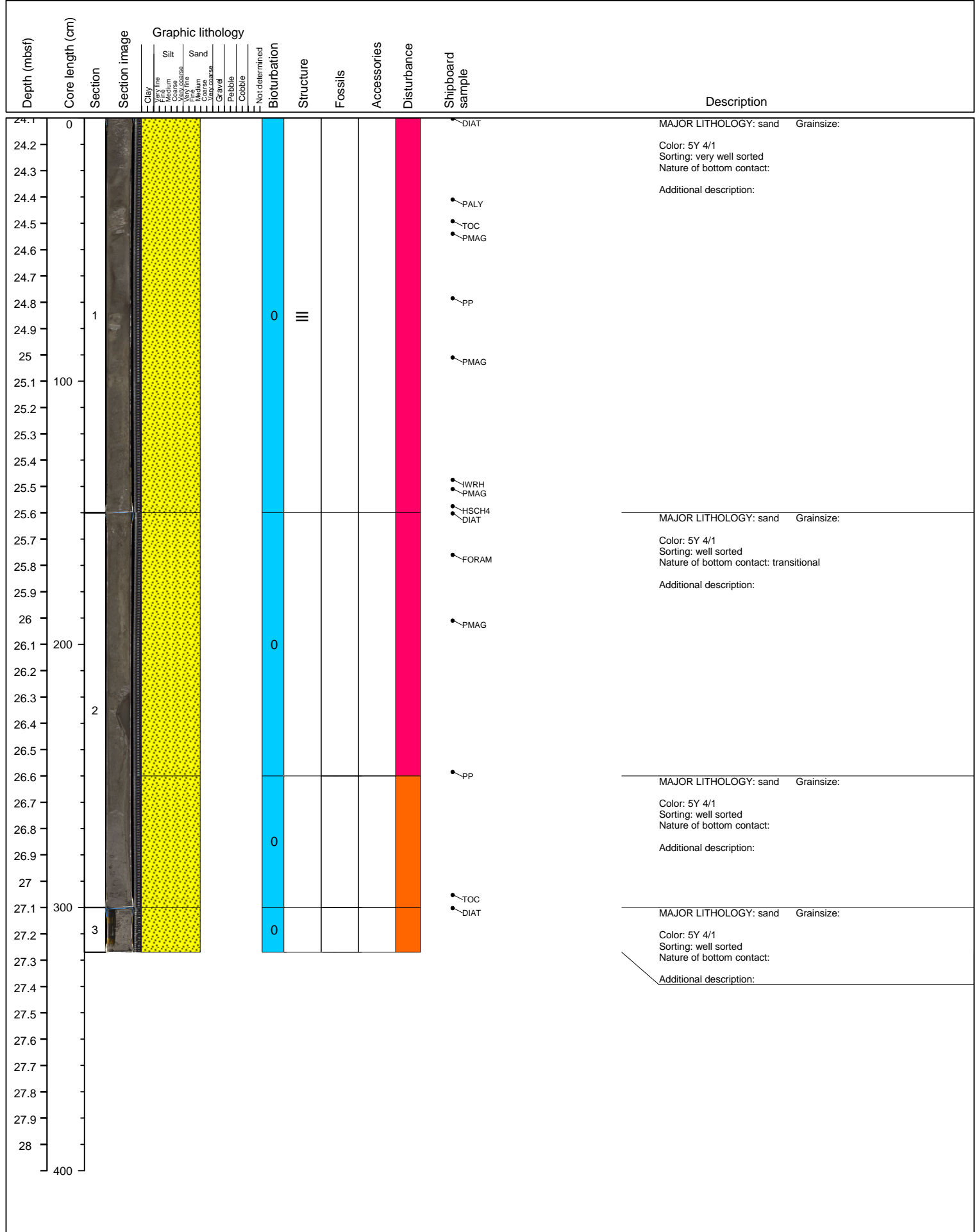
Site M0061 Hole A Core 7H Cored 14.5-17.6 mbsf

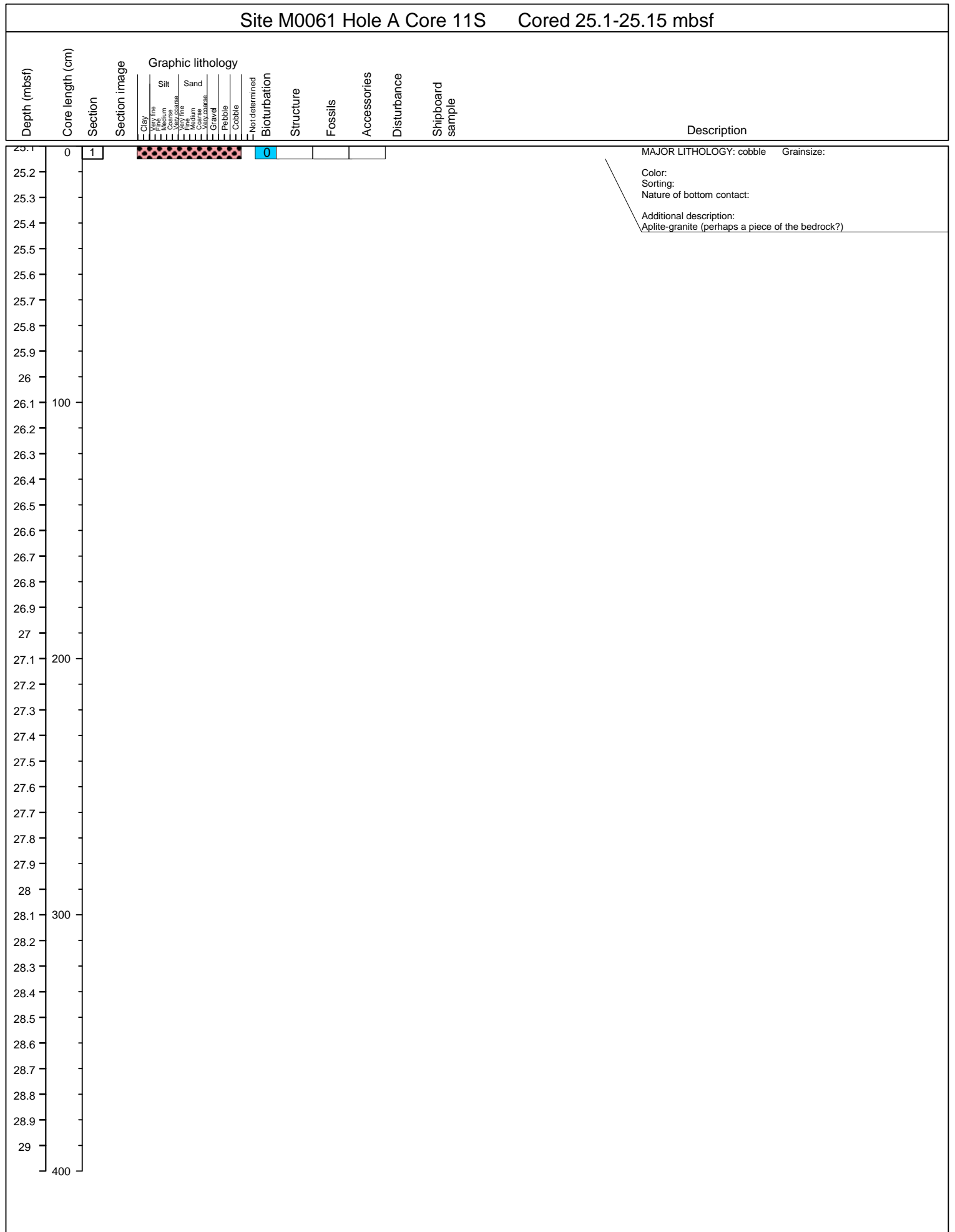
Depth (mbsf)	Core length (cm)	Section	Section image	Graphic lithology								Bioturbation	Structure	Fossils	Accessories	Disturbance	Shipboard sample	Description
				Clay	Silt	Sand	Gravel	Pebble	Cobble	Not determined	Structure							
14.5	0																	MAJOR LITHOLOGY: silty sand Grainsize: Color: 10Y 4/1 Sorting: well sorted Nature of bottom contact: Additional description: Dark greenish gray silty sand; soupy; no sedimentary features visible; mostly fine-sand; mica flakes occur
14.6																		
14.7																		
14.8																		
14.9																		
15																		
15.1																		
15.2		1																
15.3																		
15.4																		
15.5	100																	
15.6																		
15.7																		
15.8																		
15.9																		
16																		
16.1																		
16.2																		
16.3																		
16.4																		
16.5	200																	
16.6																		
16.7																		
16.8																		
16.9																		
17																		
17.1																		
17.2																		
17.3																		
17.4		3																
17.5	300																	
17.6																		
17.7																		
17.8																		
17.9																		
18																		
18.1																		
18.2																		
18.3																		
18.4	400																	

Site M0061 Hole A Core 8H Cored 17.6-20.8 mbsf

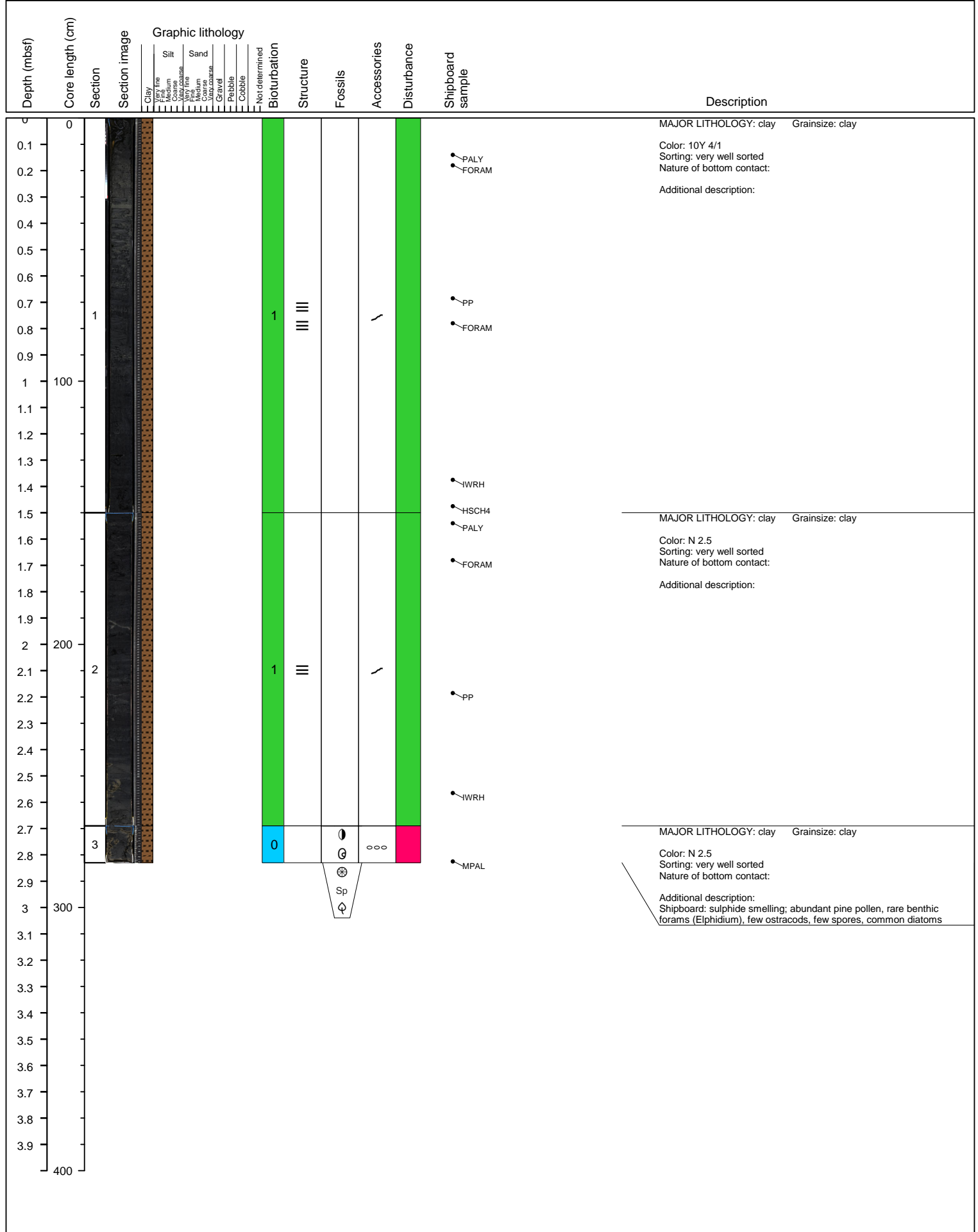


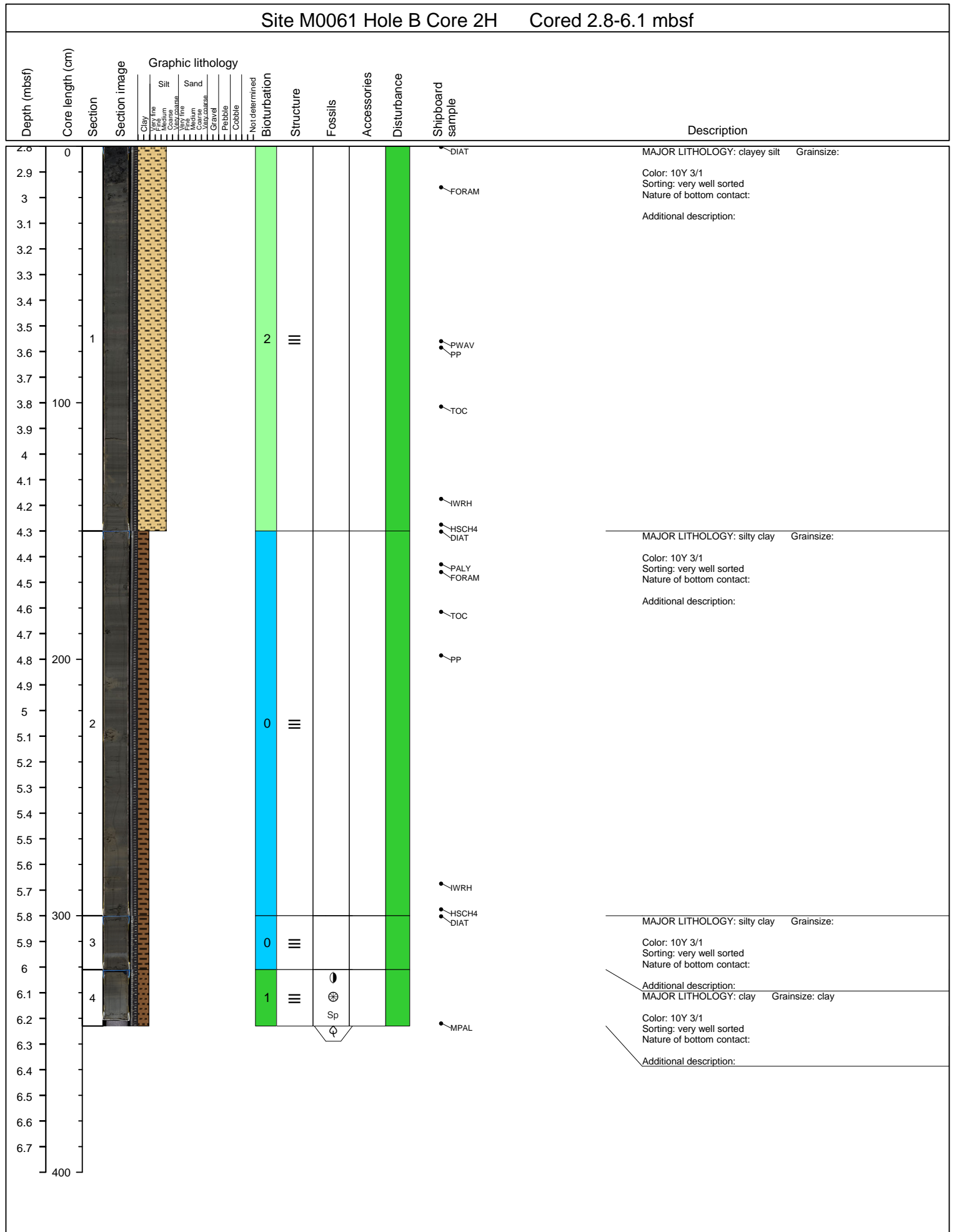
Site M0061 Hole A Core 10H Cored 24.1-25.1 mbsf

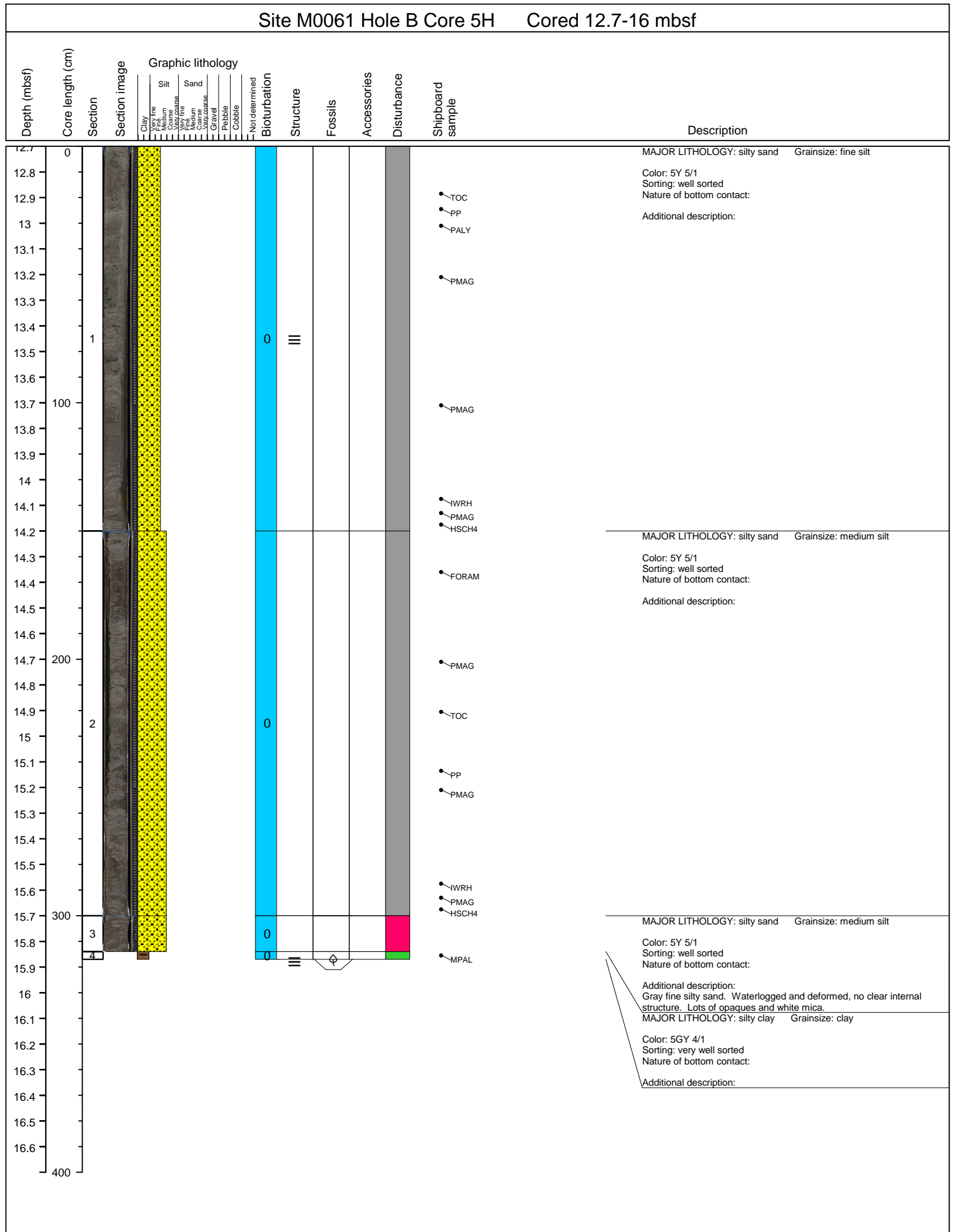


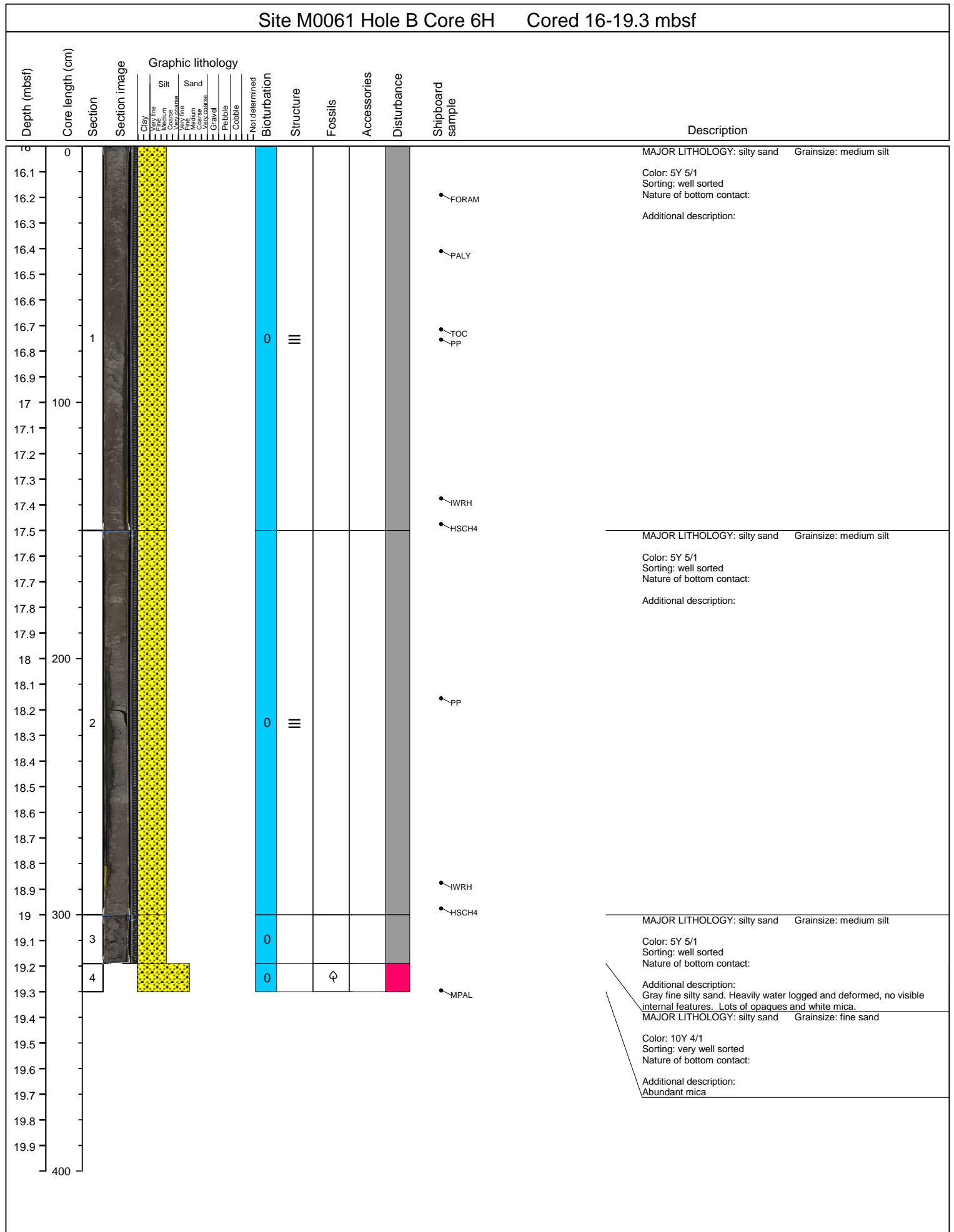


Site M0061 Hole B Core 1H Cored 0-2.8 mbsf

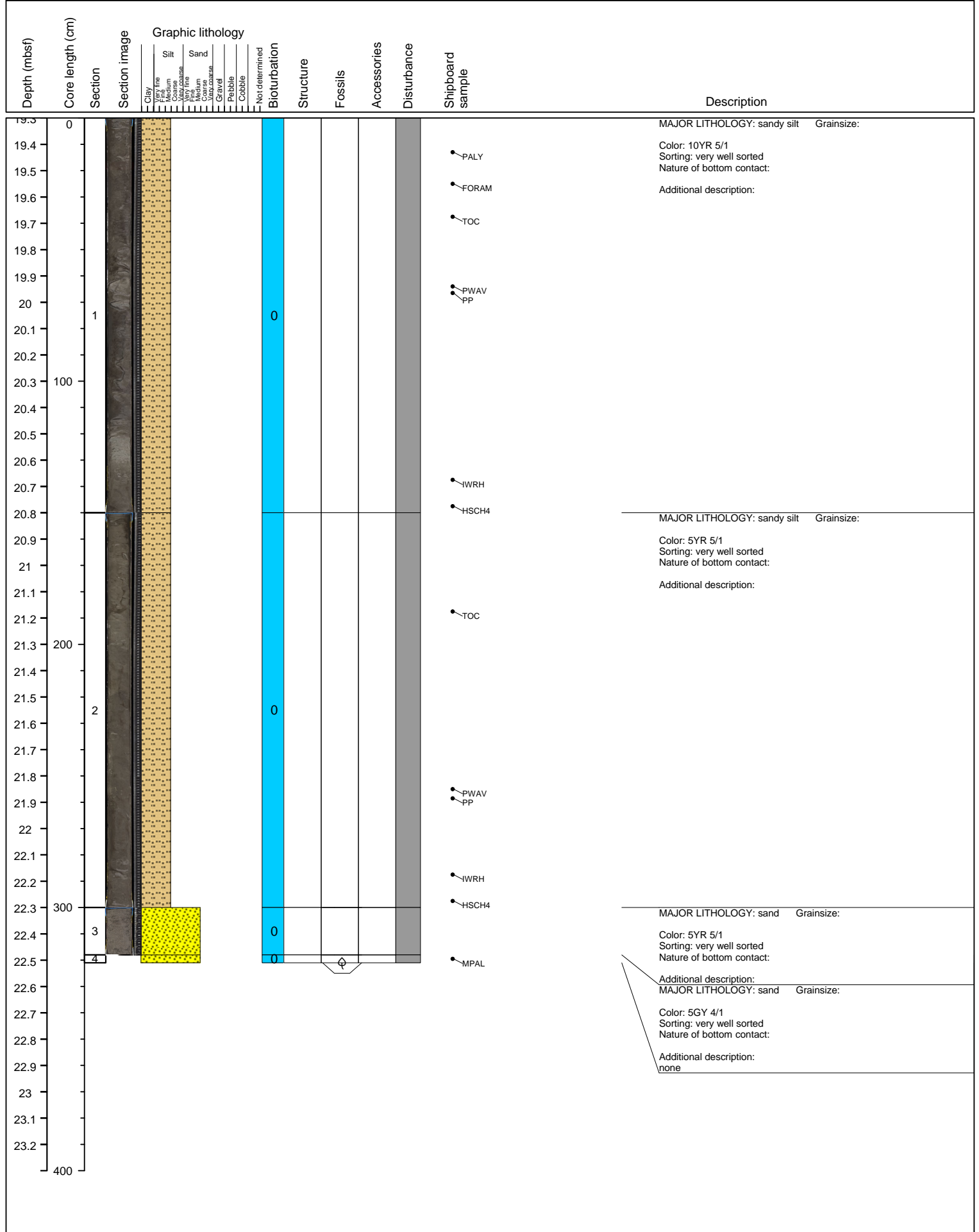




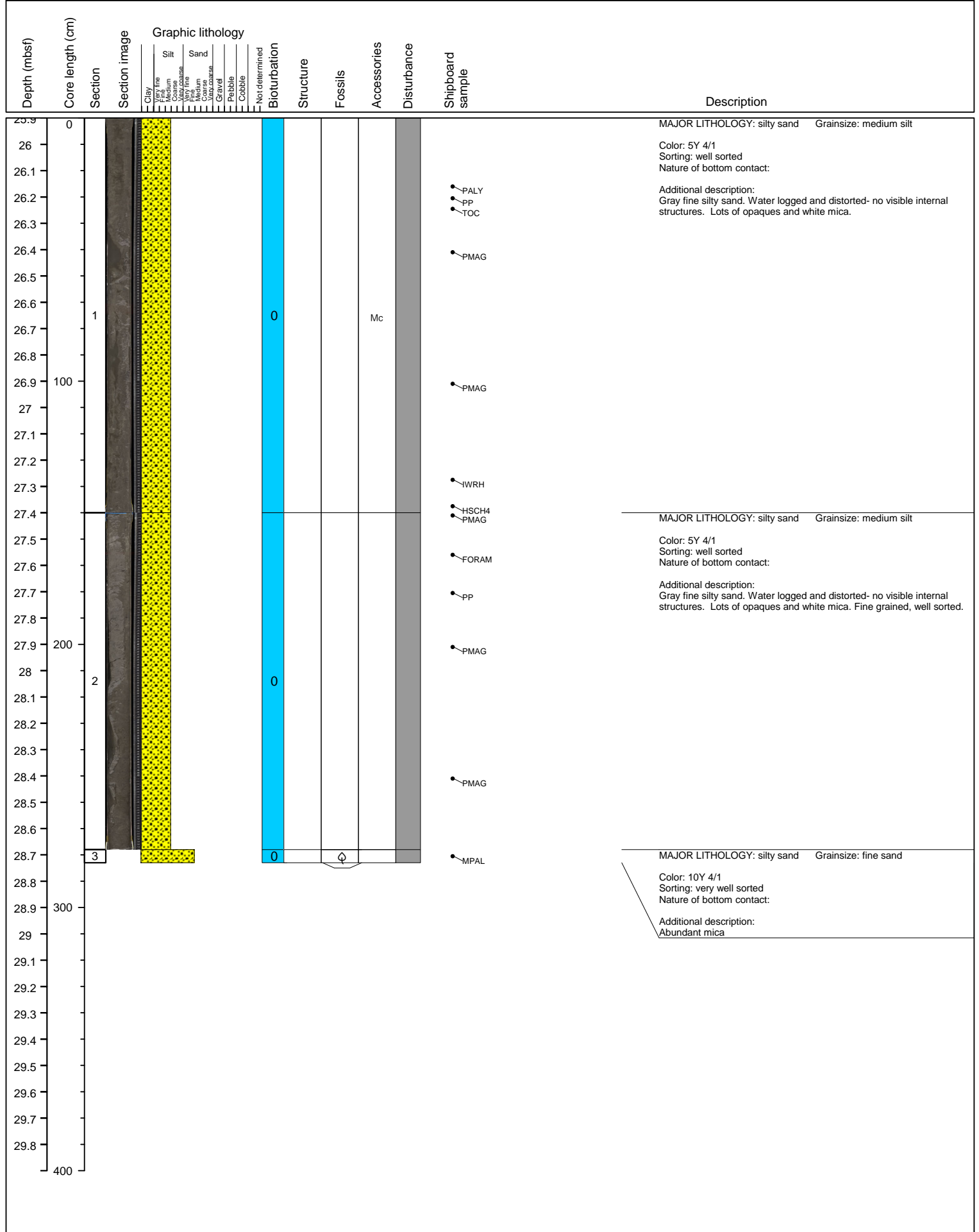


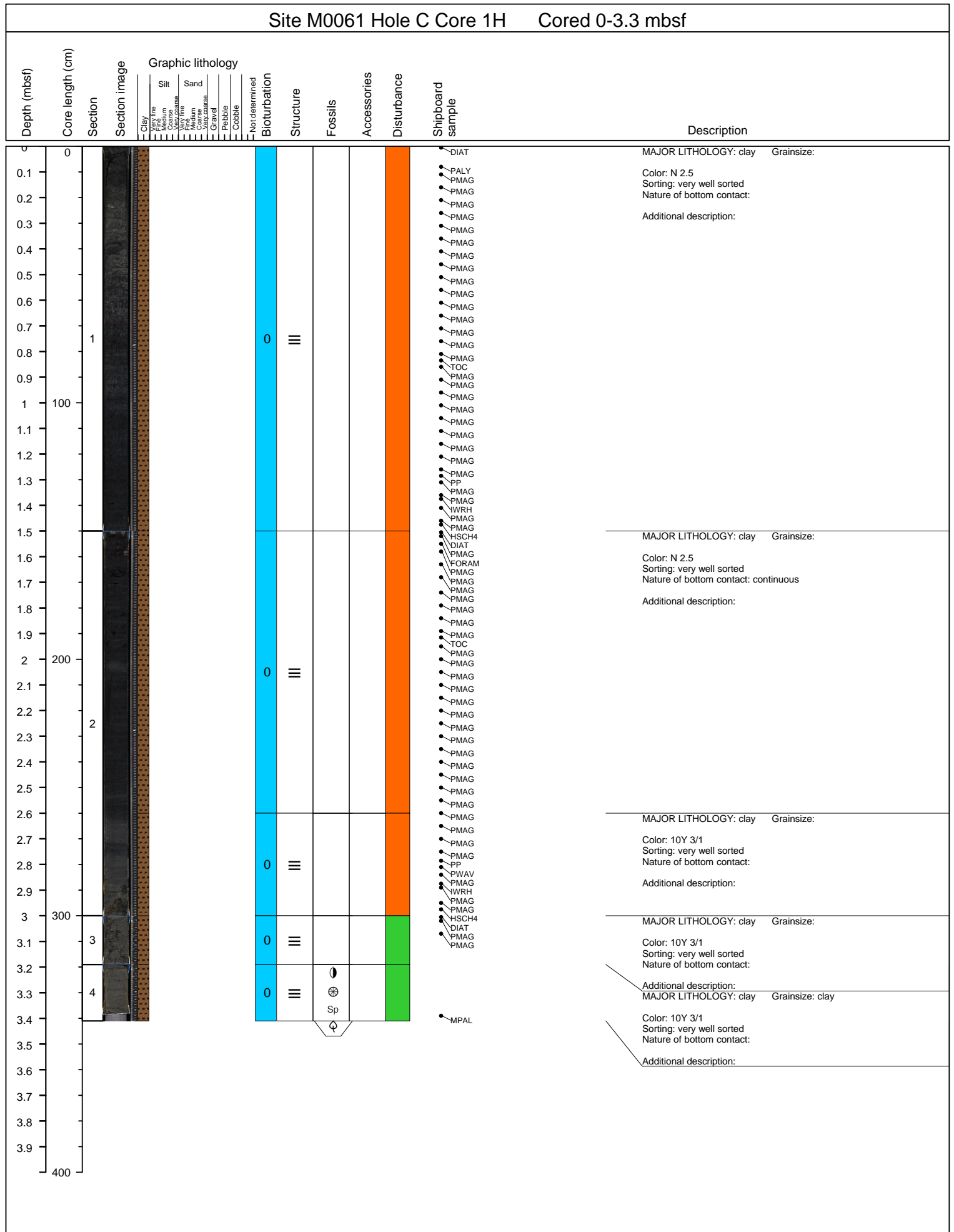


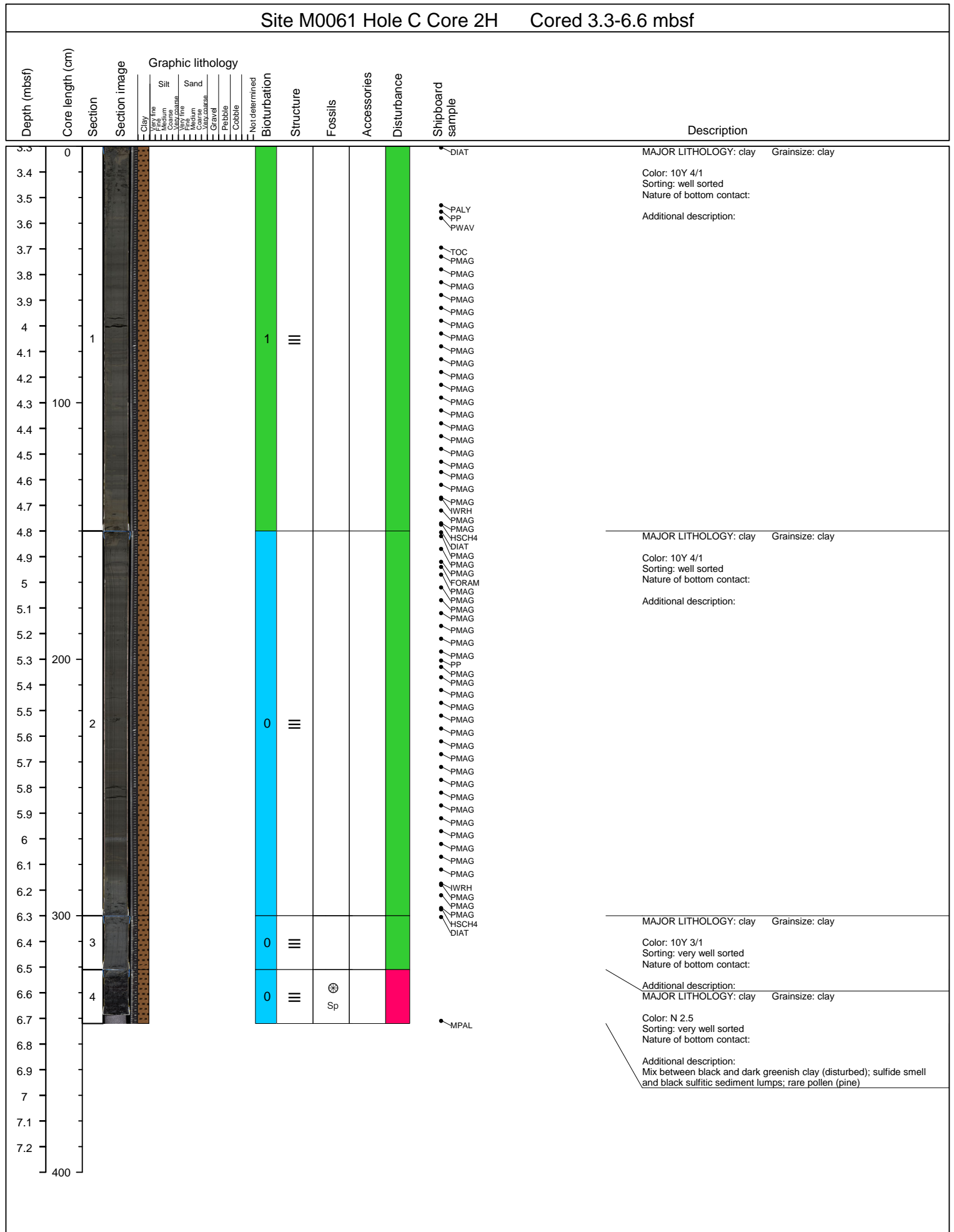
Site M0061 Hole B Core 7H Cored 19.3-22.6 mbsf



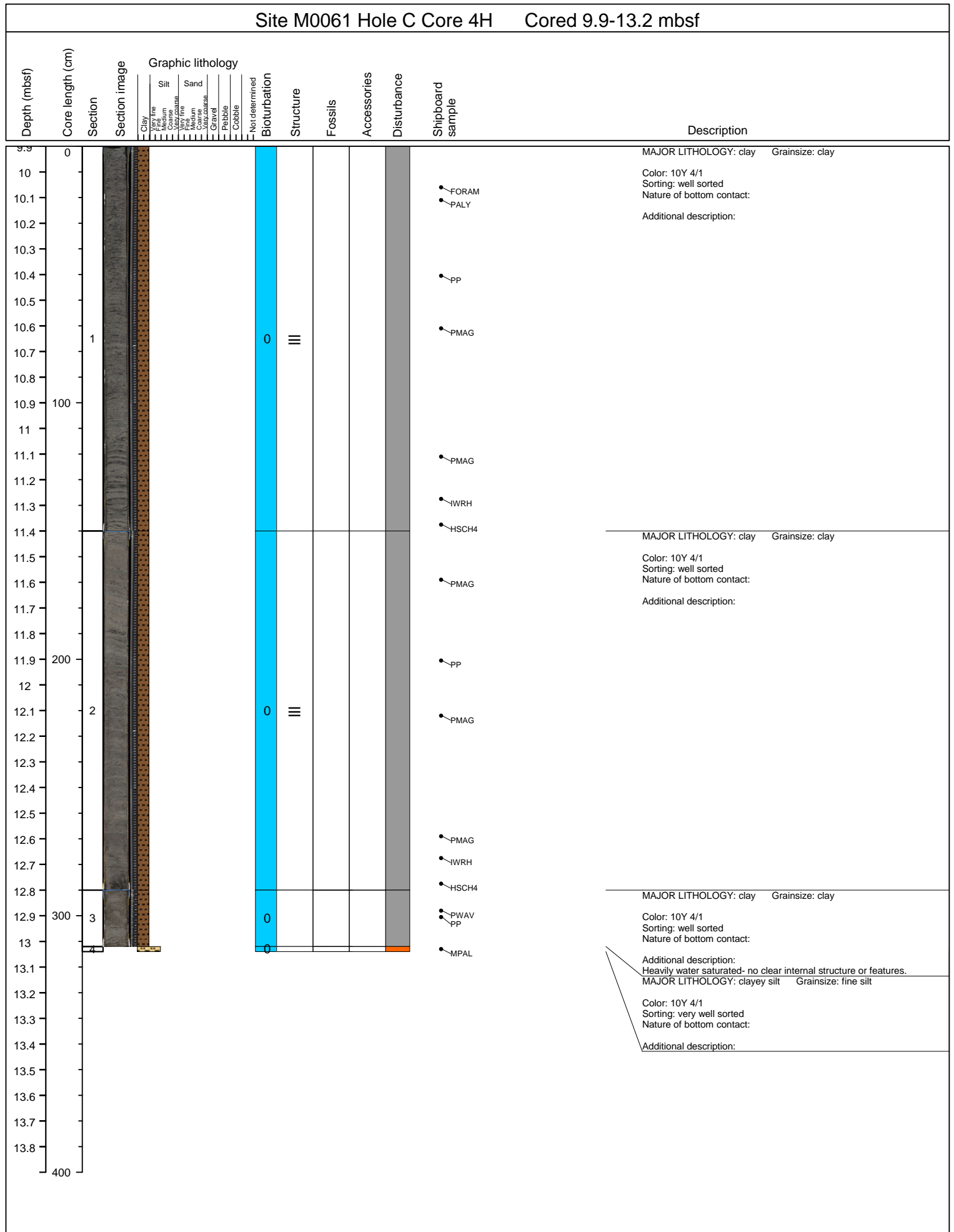
Site M0061 Hole B Core 9H Cored 25.9-28.7 mbsf



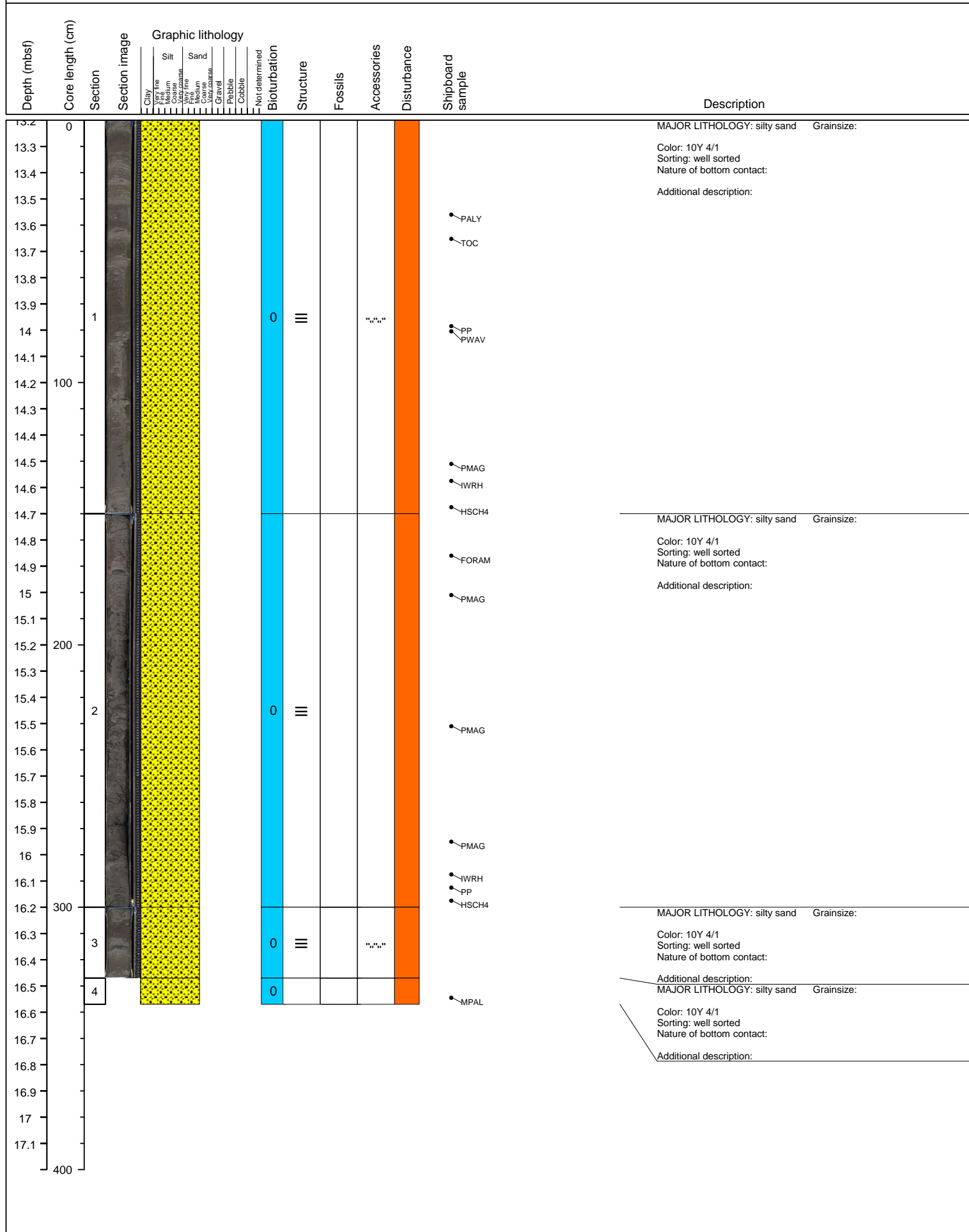




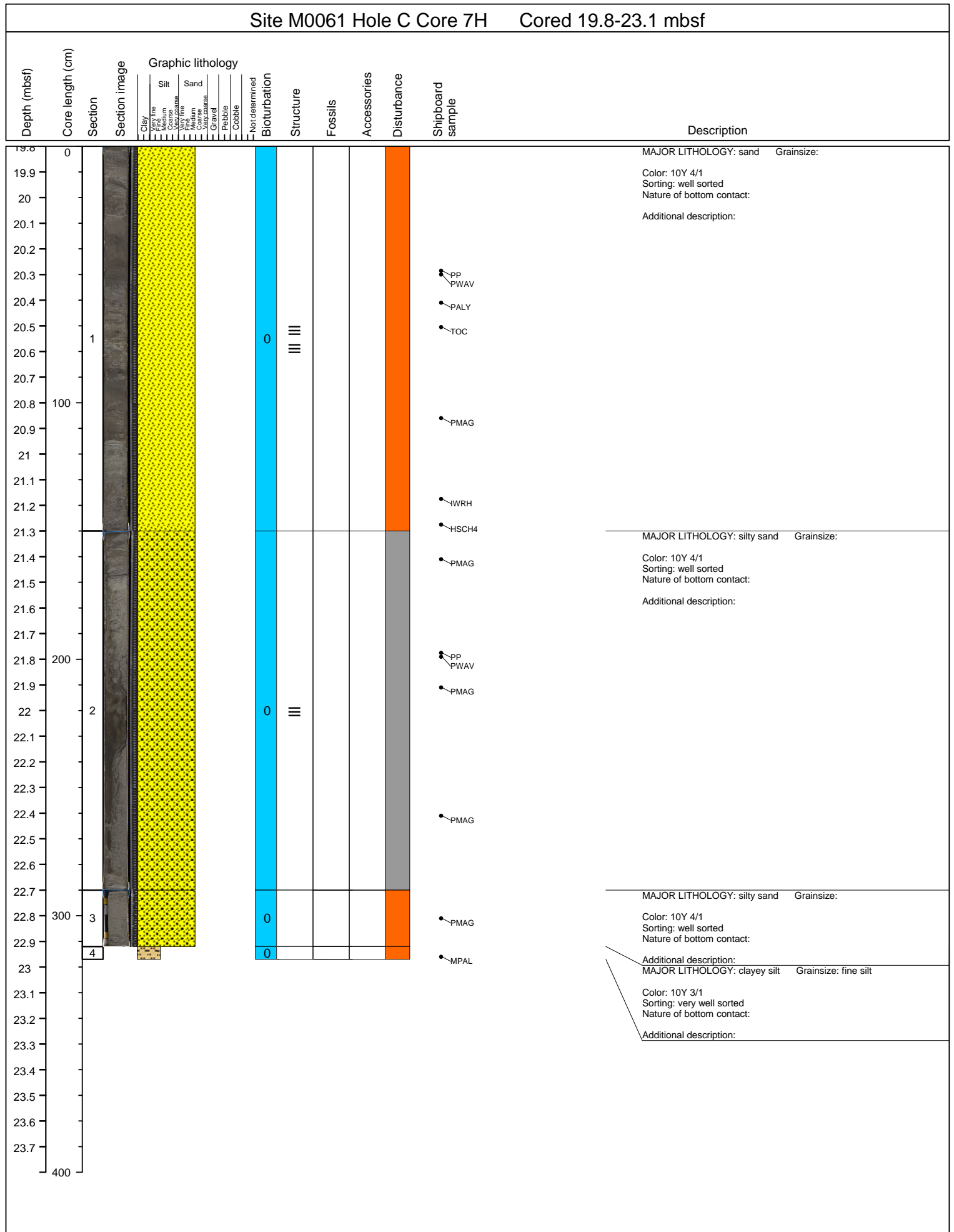
Site M0061 Hole C Core 3H Cored 6.6-9.9 mbsf													
Depth (mbsf)	Core length (cm)	Section	Section image	Graphic lithology	Not determined	Bioturbation	Structure	Fossils	Accessories	Disturbance	Shipboard sample	Description	
				Clay Very fine Fine Medium Coarse Very coarse Sand Very fine Fine Medium Coarse Very coarse Gravel Pebble Cobble									
6.6	0										DIAT	MAJOR LITHOLOGY: clay Grainsize: Color: GLEY1 4/10Y Sorting: very well sorted Nature of bottom contact: Additional description:	
6.7												FORAM	
6.8													
6.9													
7.0													
7.1							0	III					
7.2													
7.3													
7.4		1											
7.5													
7.6	100										TOC	MAJOR LITHOLOGY: clay Grainsize: Color: N 2.5 Sorting: very well sorted Nature of bottom contact: Additional description:	
7.7											PP		
7.8						0	III						
7.9													
8.0											IWRH	MAJOR LITHOLOGY: clay Grainsize: Color: GLEY1 4/10Y Sorting: very well sorted Nature of bottom contact: Additional description:	
8.1											HSC4 DIAT	MAJOR LITHOLOGY: clay Grainsize: Color: 10Y 5/1 Sorting: very well sorted Nature of bottom contact: Additional description:	
8.2													
8.3													
8.4											PALY		
8.5													
8.6	200												
8.7													
8.8		2											
8.9						0	III						
9.0													
9.1											TOC		
9.2											PP		
9.3													
9.4													
9.5											IWRH		
9.6	300										HSC4 DIAT	MAJOR LITHOLOGY: clay Grainsize: Color: GLEY1 5/N Sorting: very well sorted Nature of bottom contact: Additional description:	
9.7		3				0					TOC		
9.8												Gray, clay, very well sorted, heavily disturbed MAJOR LITHOLOGY: clay Grainsize: clay	
9.9		4				0							
10.0													
10.1											MPAL	Color: 10GY 4/1 Sorting: very well sorted Nature of bottom contact: Additional description:	
10.2													
10.3													
10.4													
10.5													
400													



Site M0061 Hole C Core 5H Cored 13.2-16.5 mbsf



Site M0061 Hole C Core 7H Cored 19.8-23.1 mbsf



Site M0061 Hole L Core 1L Cored 0-1 mbsf

Depth (mbsf)	Core length (cm)	Section	Section image	Graphic lithology	Structure	Fossils	Accessories	Disturbance	Shipboard sample	Description
0	0			Clay Very fine Medium Coarse						
0.1				Silt Very fine Medium Coarse						
0.2				Sand Very fine Medium Coarse						
0.3				Gravel Pebble Cobble						
0.4				Not determined						
0.5	1									
0.6										
0.7										
0.8										
0.9										
1	100									
1.1										
1.2										
1.3										
1.4										
1.5										
1.6										
1.7										
1.8										
1.9										
2	200									
2.1										
2.2										
2.3										
2.4										
2.5										
2.6										
2.7										
2.8										
2.9										
3	300									
3.1										
3.2										
3.3										
3.4										
3.5										
3.6										
3.7										
3.8										
3.9										
400										

