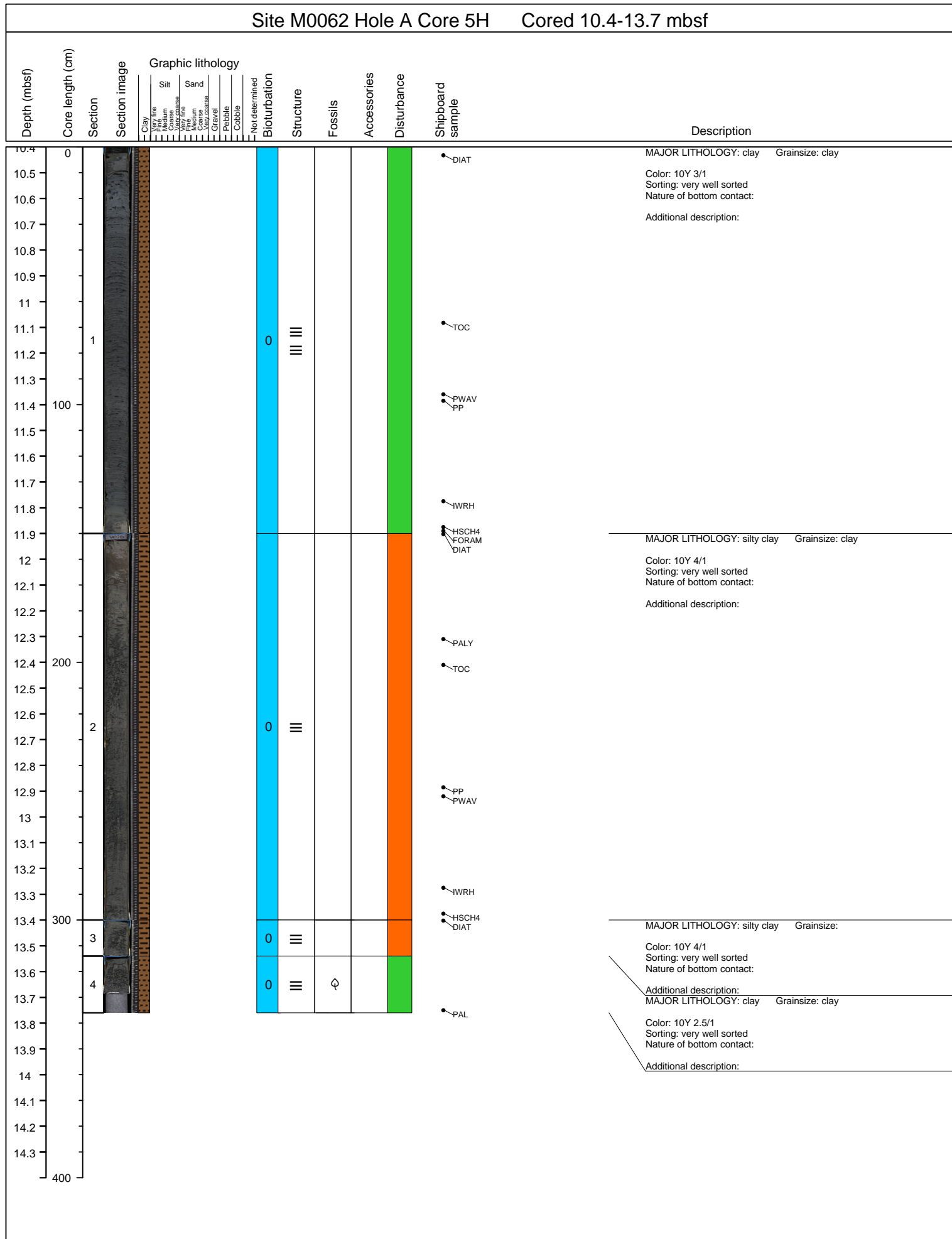
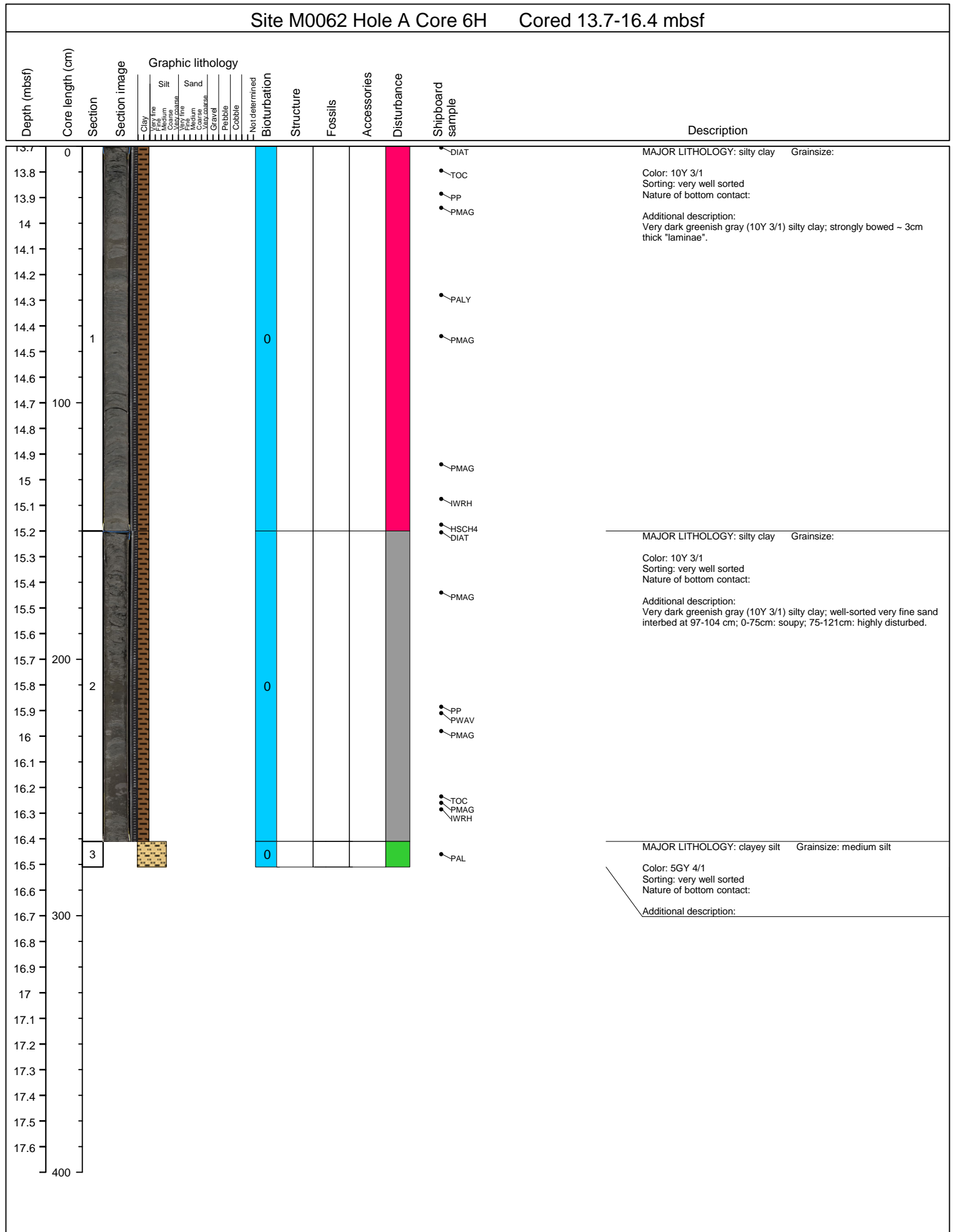




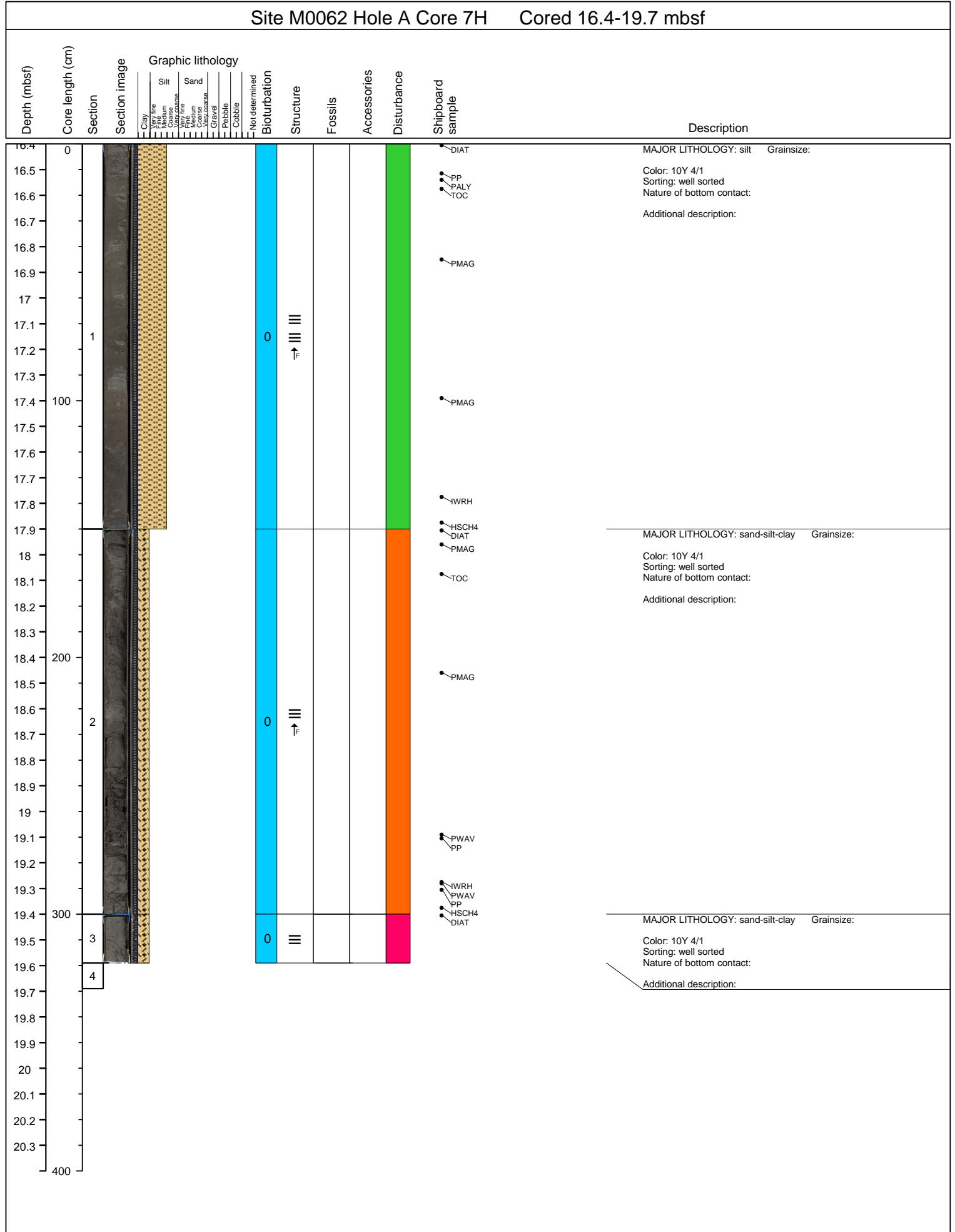
Site M0062 Hole A Core 5H Cored 10.4-13.7 mbsf



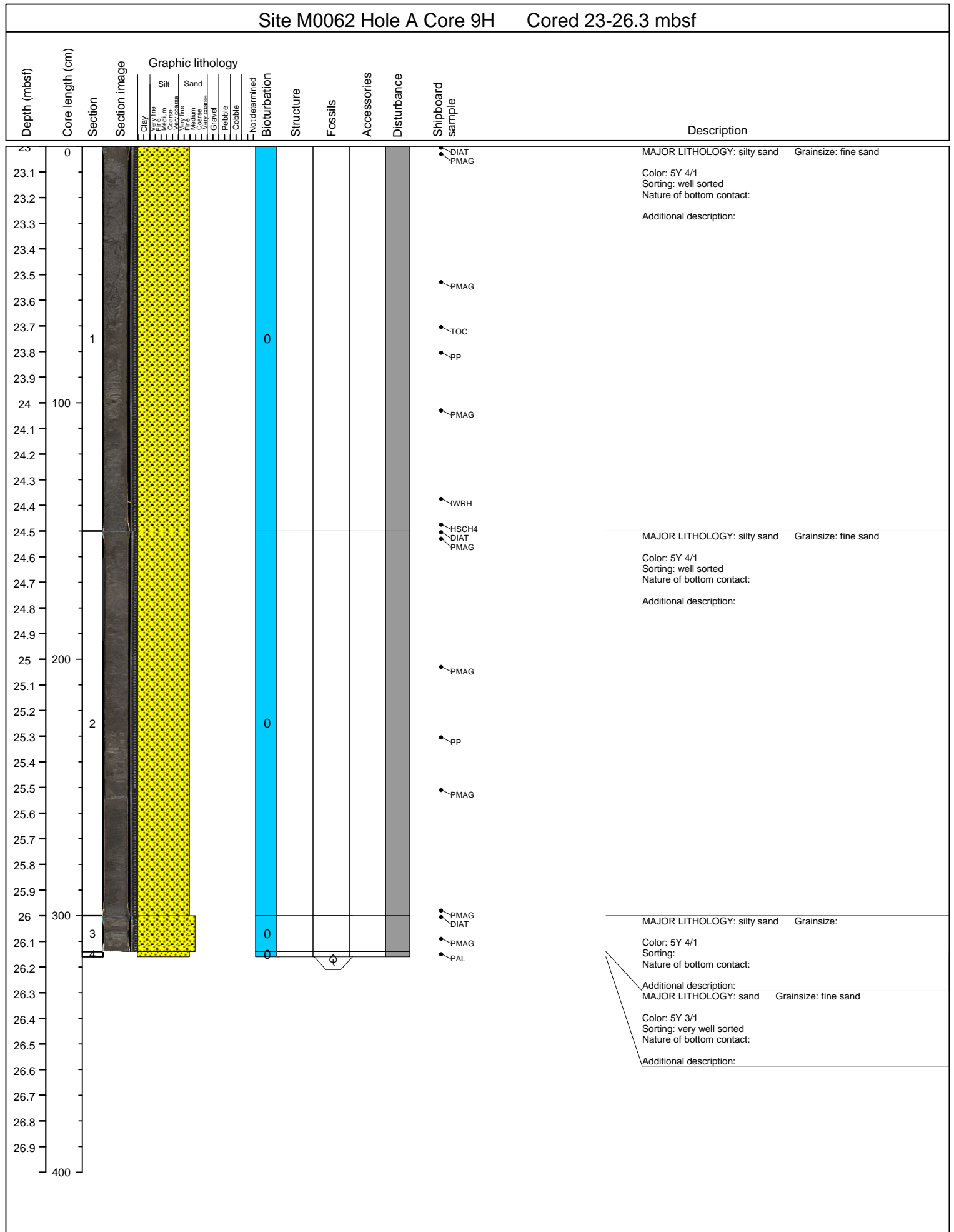
Site M0062 Hole A Core 6H Cored 13.7-16.4 mbsf



Site M0062 Hole A Core 7H Cored 16.4-19.7 mbsf

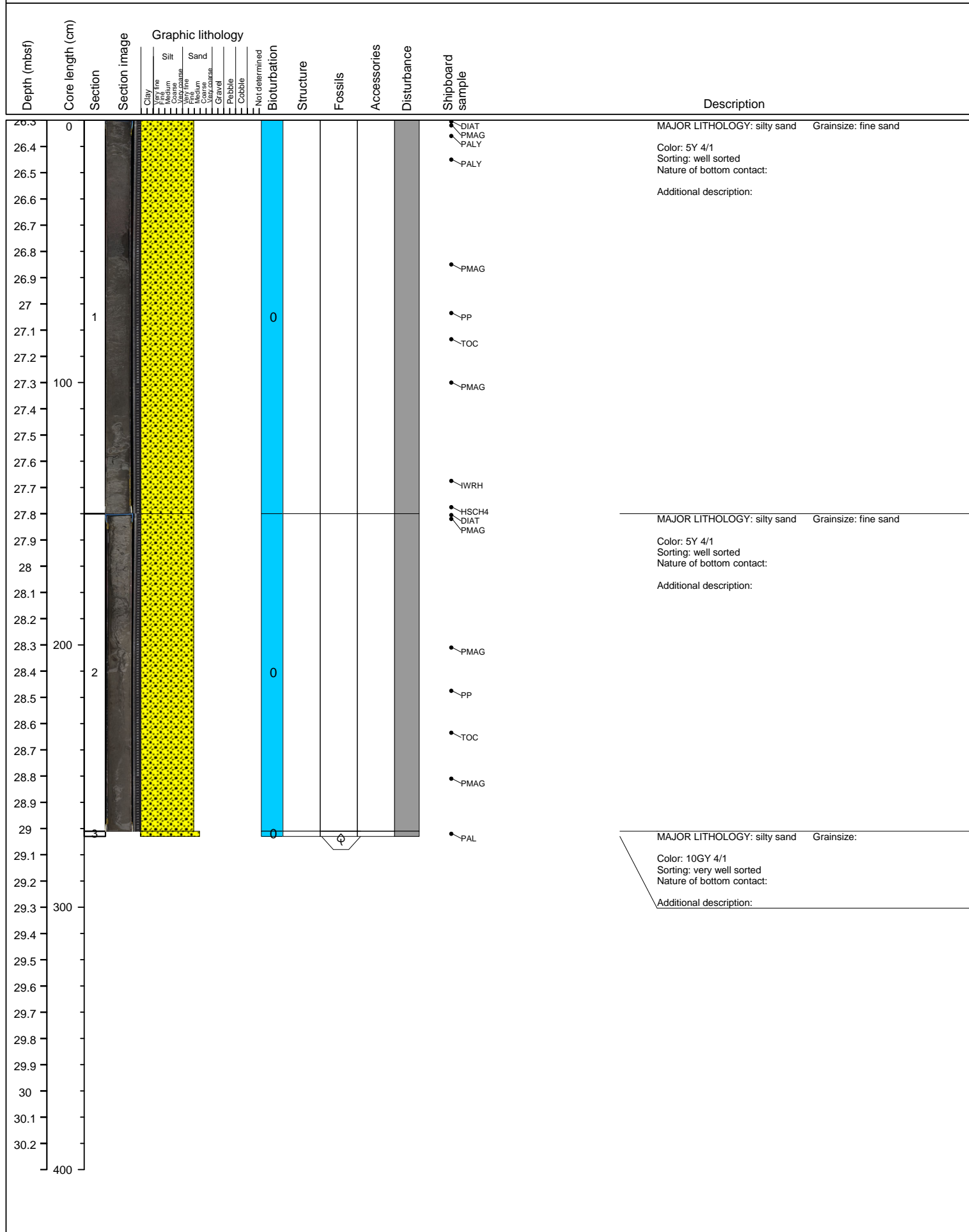


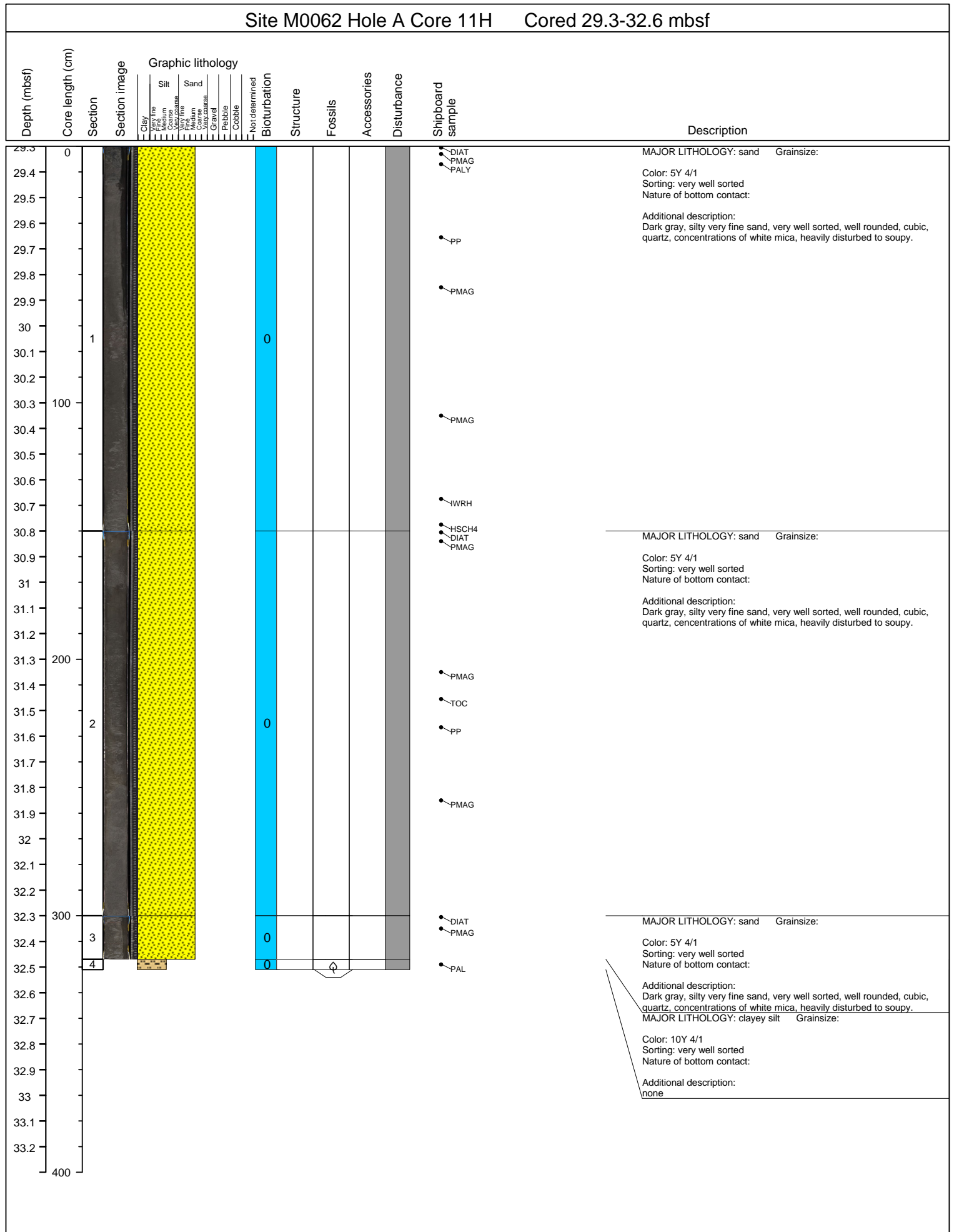
Site M0062 Hole A Core 8H Cored 19.7-23 mbsf												
Depth (mbsf)	Core length (cm)	Section	Section image	Graphic lithology	Not determined	Bioturbation	Structure	Fossils	Accessories	Disturbance	Shipboard sample	Description
				Clay Very fine Medium Coarse Very coarse Sand Very fine Medium Very coarse Gravel Pebble Cobble Not determined								
19.7	0											DIAT MAJOR LITHOLOGY: silt Grainsize: Color: 5Y 4/1 Sorting: very well sorted Nature of bottom contact: Additional description: Dark gray, silt, very well sorted, concentration of white mica, few cm. lamina at 87cm, soupy.
19.8												
19.9												
20												
20.1												
20.2												
20.3												
20.4		1				0						
20.5												
20.6												
20.7	100											
20.8												
20.9												
21												
21.1												
21.2												
21.3												MAJOR LITHOLOGY: silt Grainsize: Color: 5Y 4/1 Sorting: very well sorted Nature of bottom contact: Additional description: Dark gray, silt and very fine sand, Very well sorted, concentrations of white mica, heavily disturbed to soupy.
21.4												
21.5												
21.6												
21.7	200											
21.8												
21.9		2				0						
22												
22.1												
22.2												
22.3												
22.4												
22.5												
22.6												
22.7	300	3				0						MAJOR LITHOLOGY: silt Grainsize: Color: 5Y 4/1 Sorting: very well sorted Nature of bottom contact: Additional description: Dark gray, silt, very well sorted, contents of white mica, heavily disturbed.
22.8		4				0						MAJOR LITHOLOGY: clayey silt Grainsize: medium silt Color: 10Y 3/1 Sorting: very well sorted Nature of bottom contact: Additional description: Abundant mica
22.9												
23												
23.1												
23.2												
23.3												
23.4												
23.5												
23.6	400											



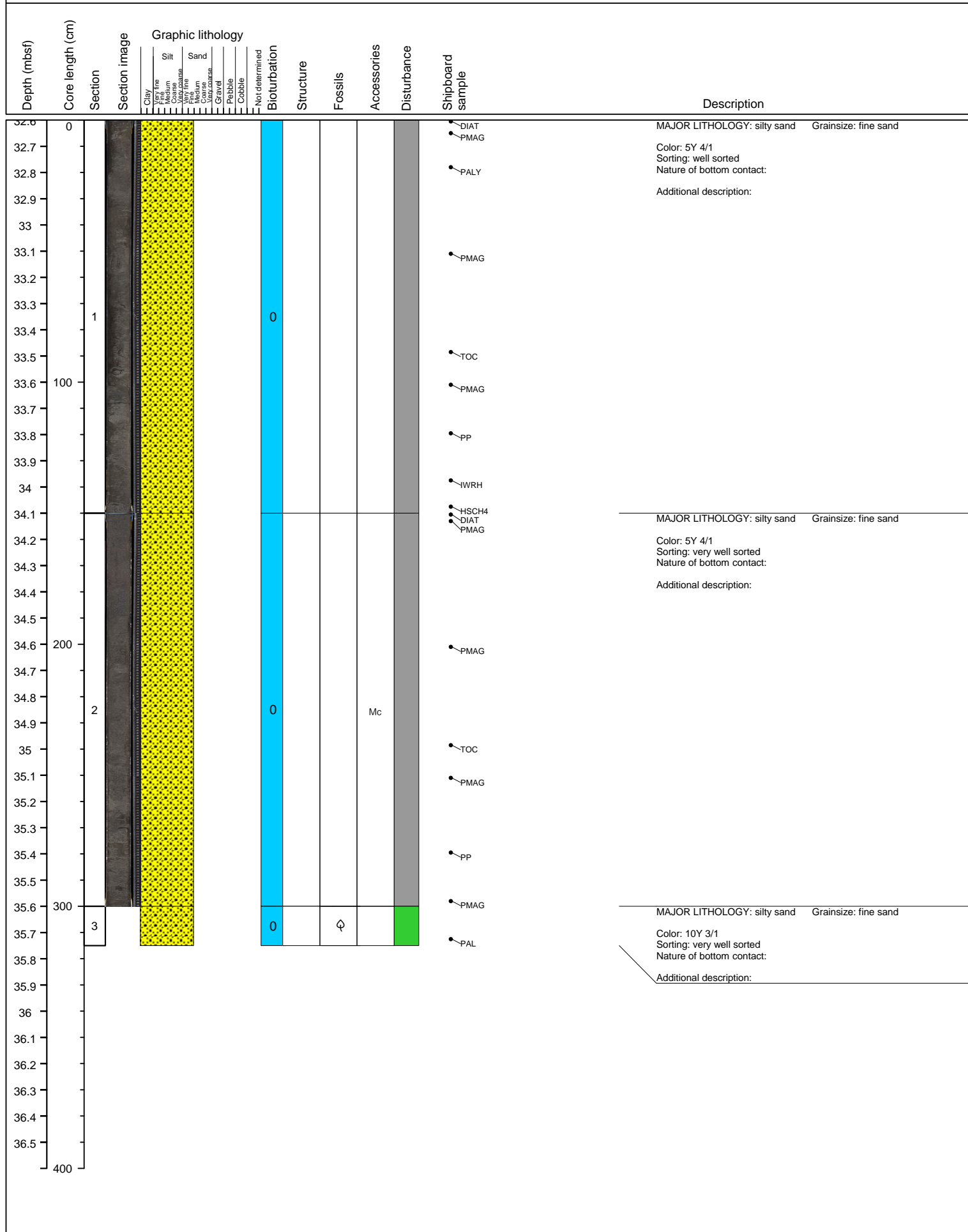


Site M0062 Hole A Core 10H Cored 26.3-29.3 mbsf

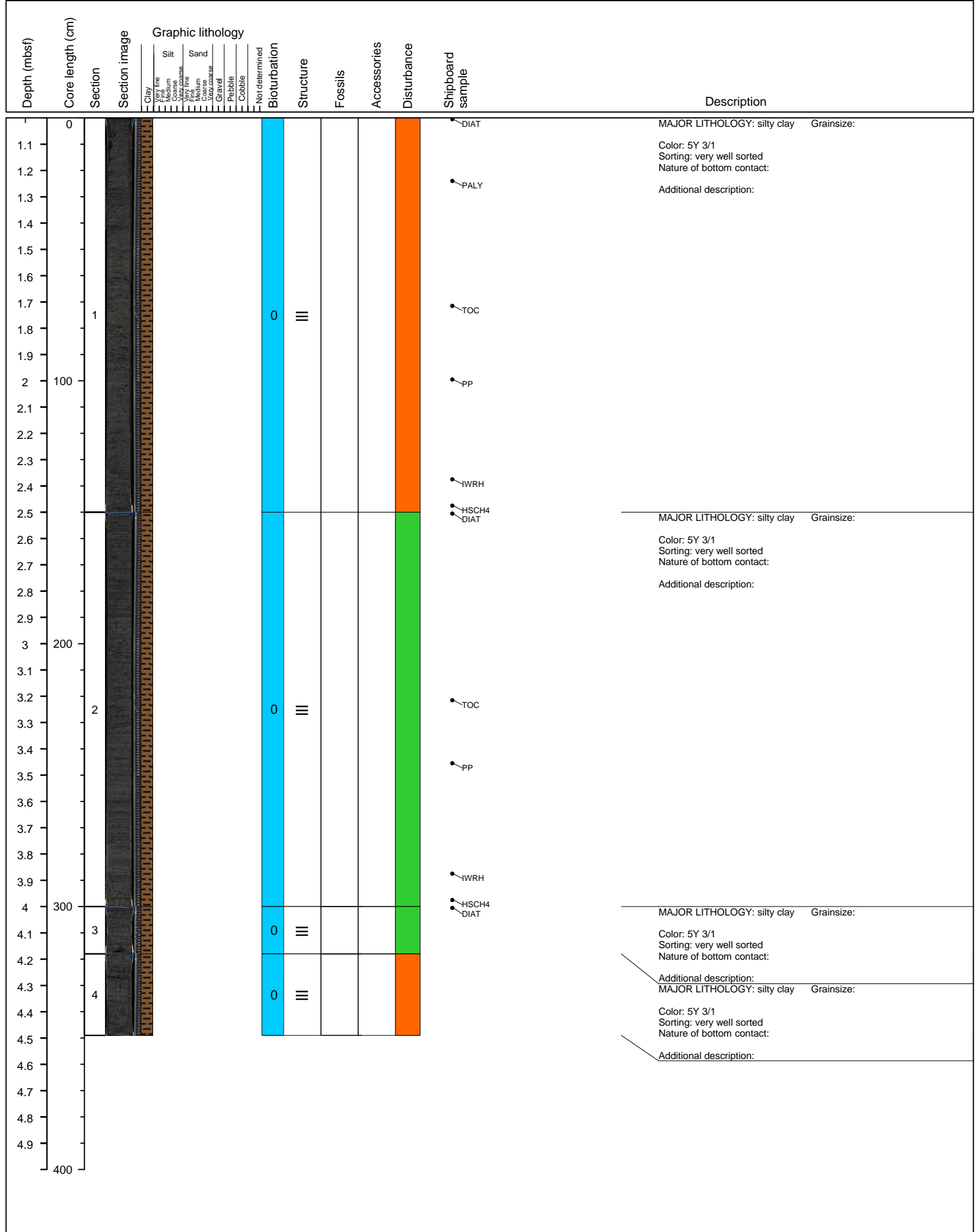


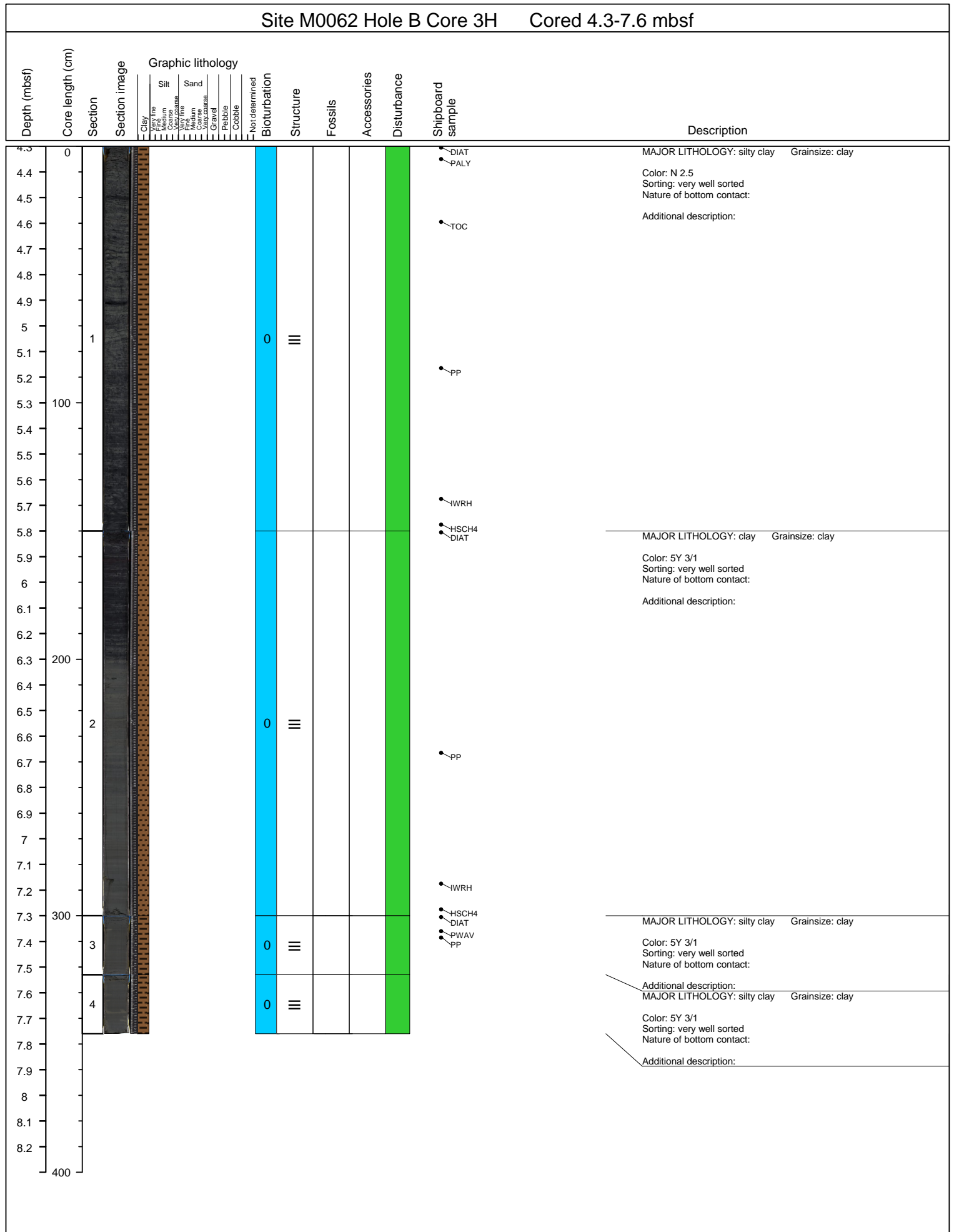


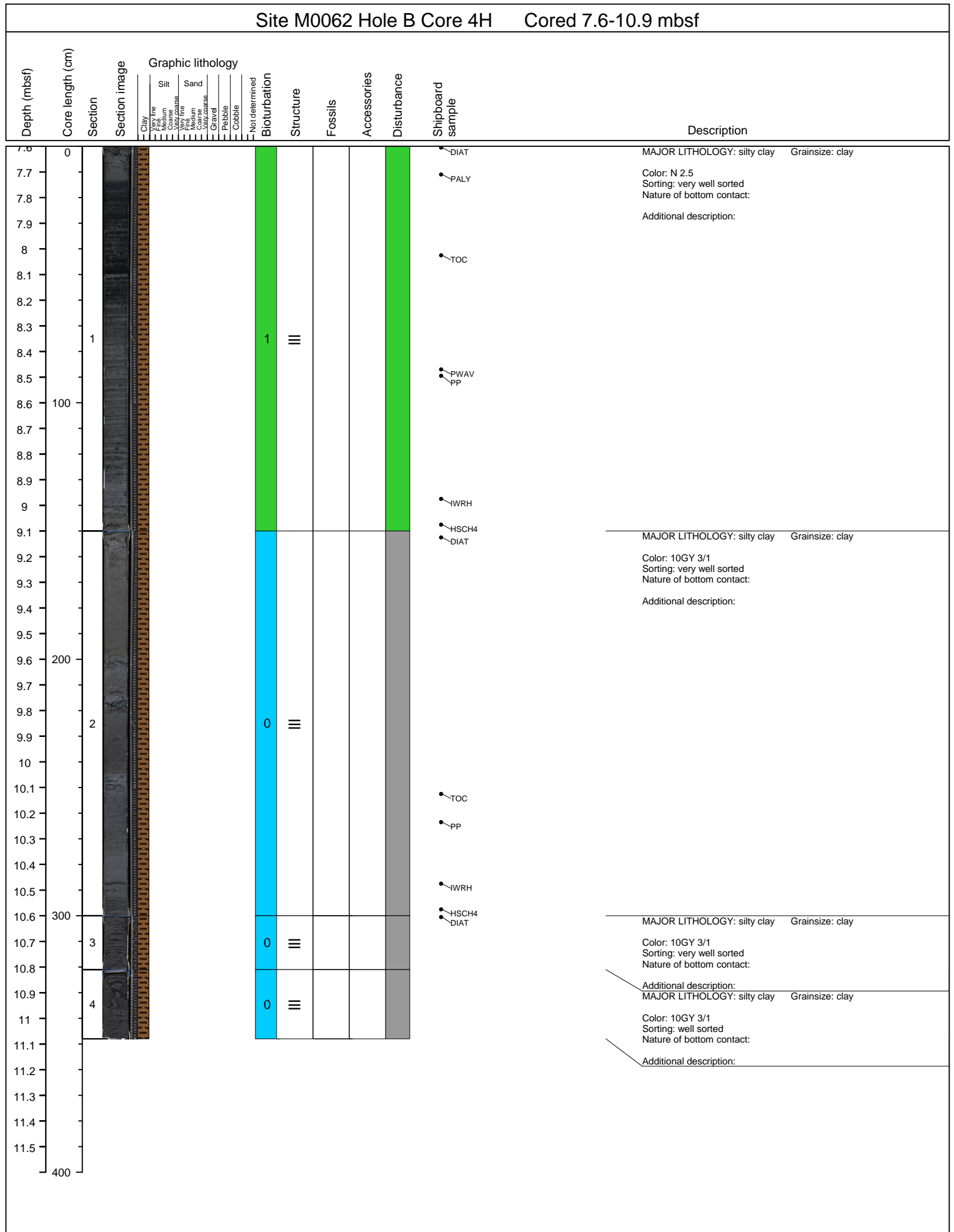
Site M0062 Hole A Core 13H Cored 32.6-35.9 mbsf



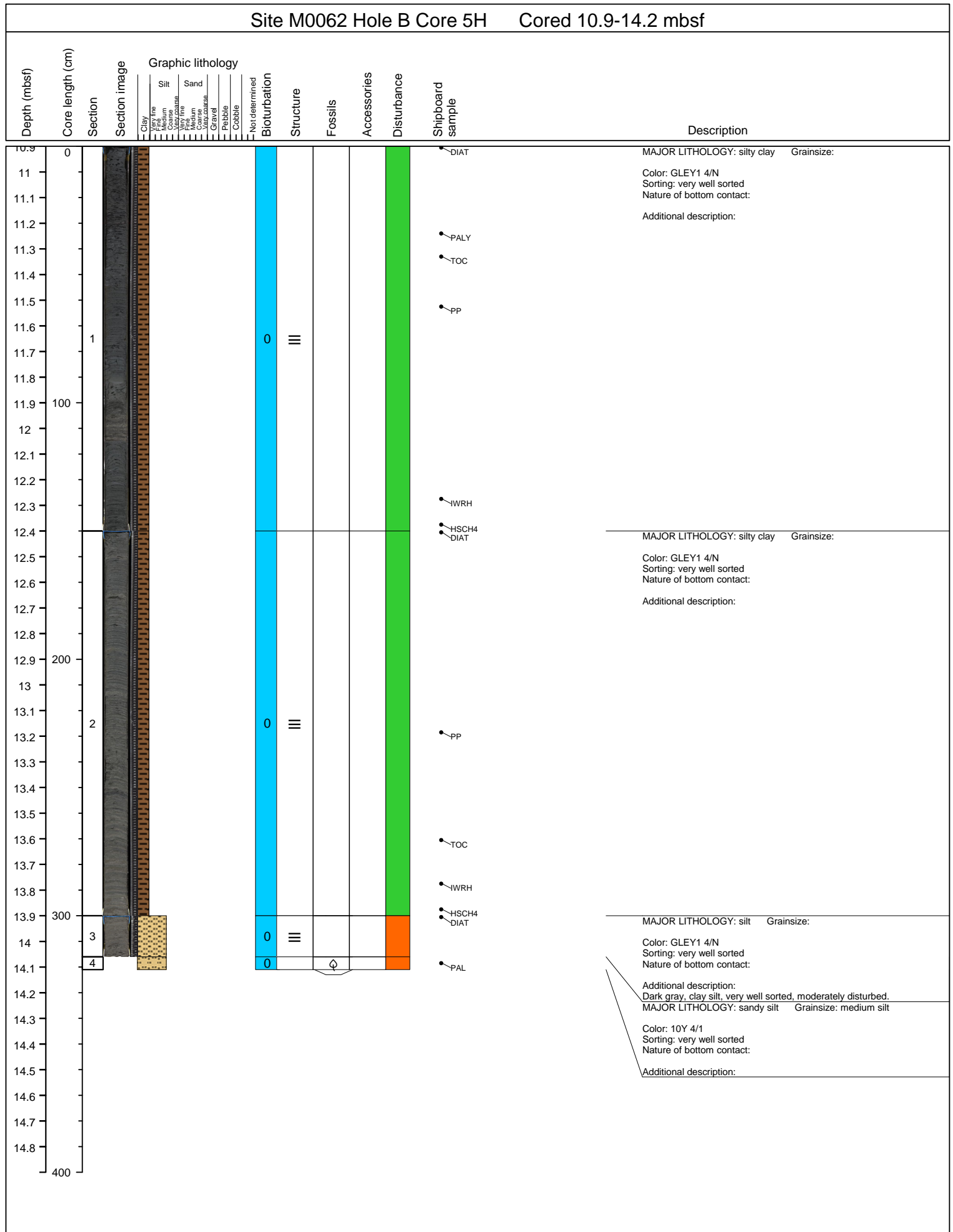
Site M0062 Hole B Core 2H Cored 1-4.3 mbsf



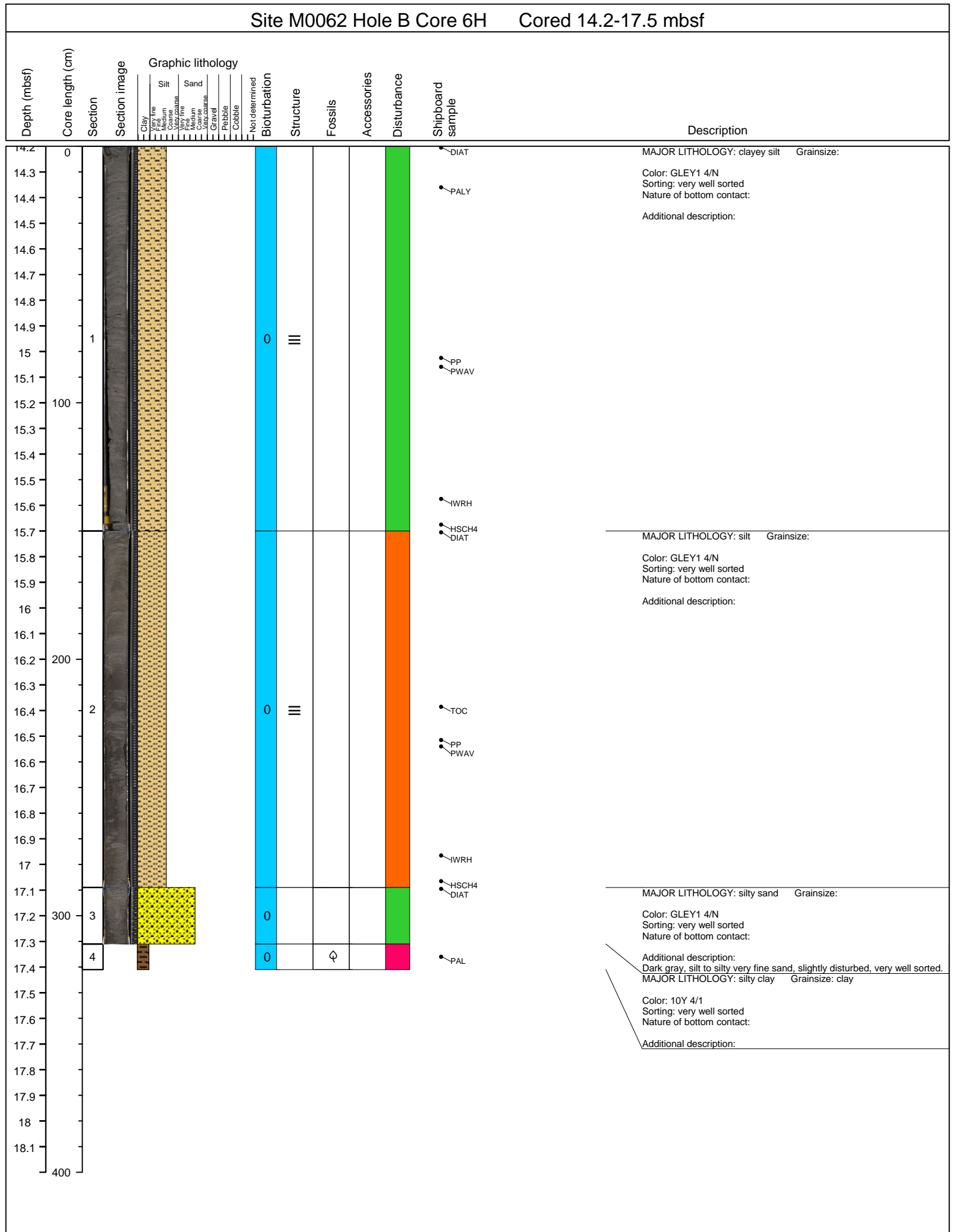




Site M0062 Hole B Core 5H Cored 10.9-14.2 mbsf

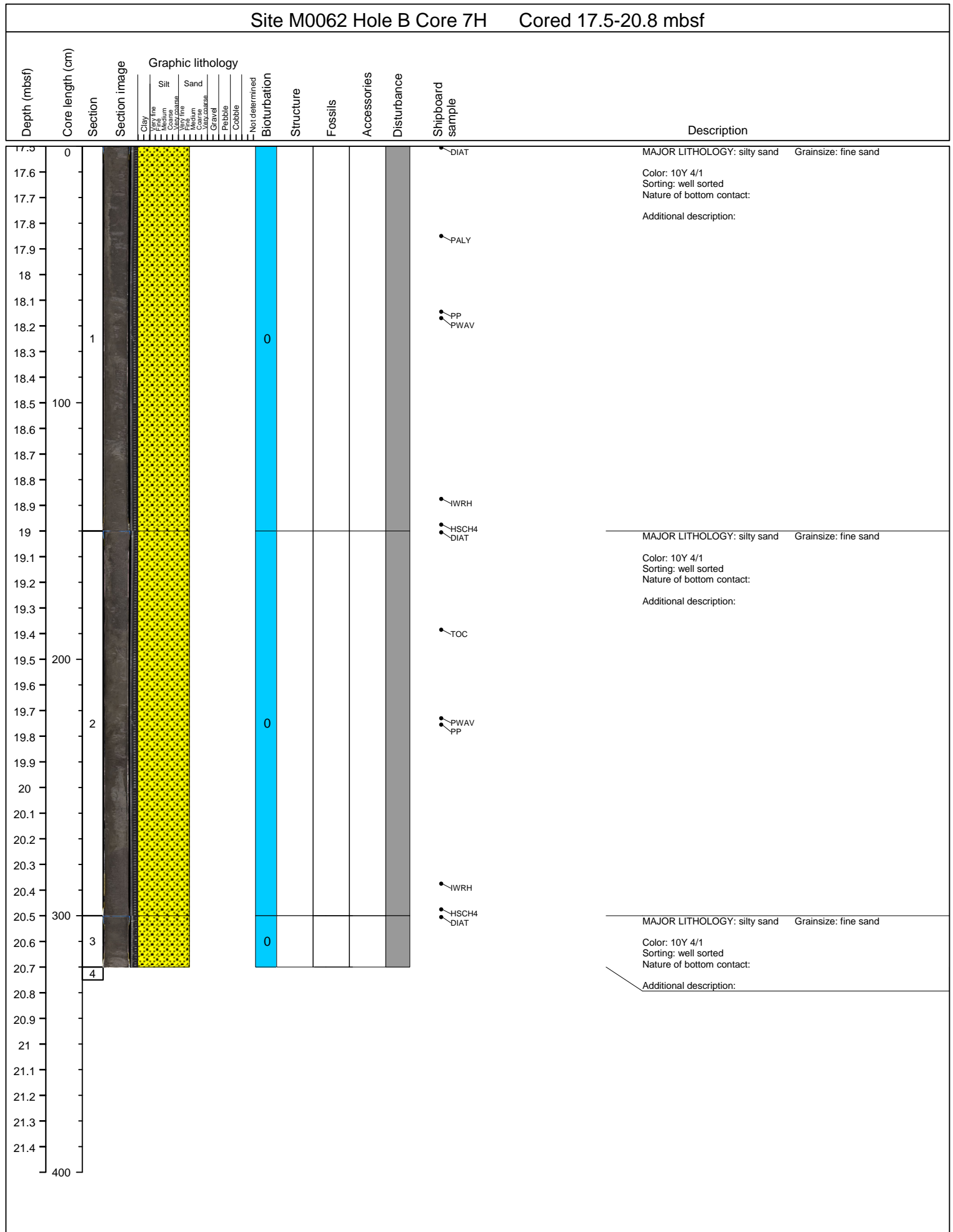


Site M0062 Hole B Core 6H Cored 14.2-17.5 mbsf





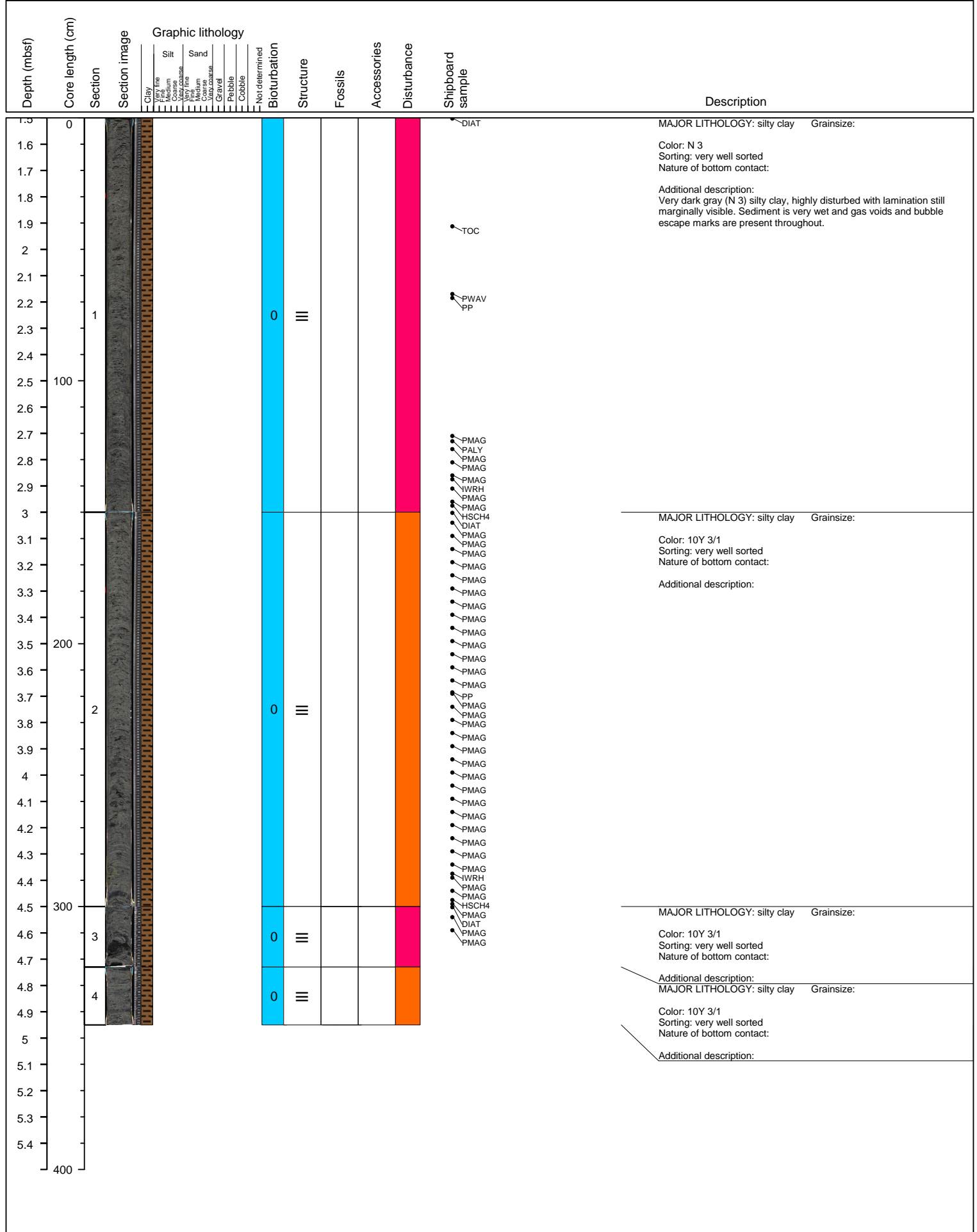
Site M0062 Hole B Core 7H Cored 17.5-20.8 mbsf



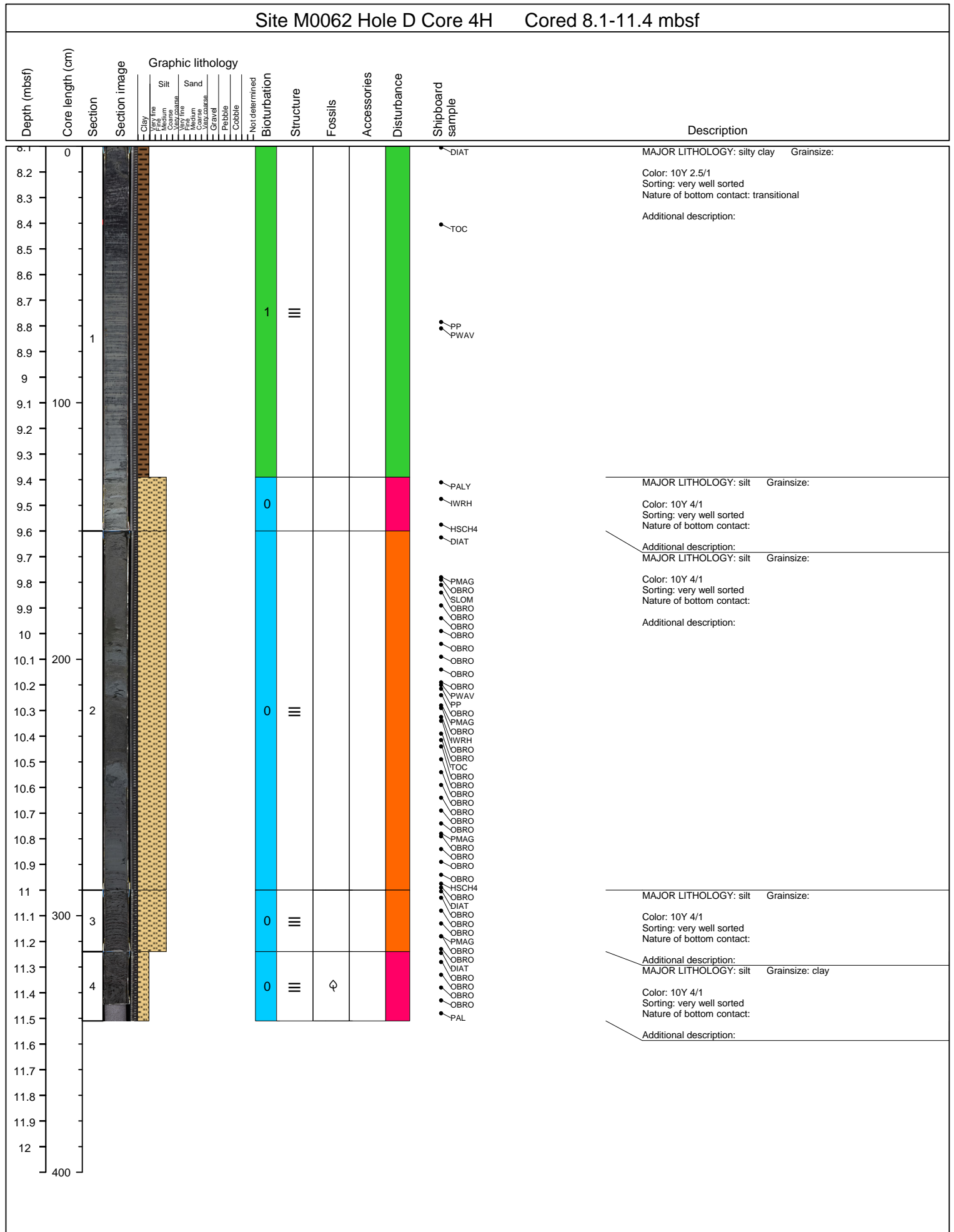




Site M0062 Hole D Core 2H Cored 1.5-4.8 mbsf



Site M0062 Hole D Core 3H Cored 4.8-8.1 mbsf																
Depth (mbsf)	Core length (cm)	Section	Section image	Graphic lithology				Shipboard sample	Description							
				Clay	Silt	Sand	Not determined	Biurbation	Structure	Fossils	Accessories	Disturbance				
				Very fine	Very fine	Very fine										
				Medium	Medium	Medium										
				Coarse	Coarse	Coarse										
				Very coarse	Very coarse	Very coarse										
				Gravel	Gravel	Gravel										
				Pebble	Pebble	Pebble										
				Cobble	Cobble	Cobble										
4.8	0													DIAT	MAJOR LITHOLOGY: silty clay Grainsize: clay Color: 10Y 2.5/1 Sorting: very well sorted Nature of bottom contact: Additional description:	
4.9																
5.0																
5.1																
5.2																
5.3																
5.4																
5.5															PP PWAV	
5.6	1							0				S				
5.7																
5.8															TOC	
5.9																
6.0	100															
6.1																
6.2															IWRH	
6.3															HSCH4 PMAG	MAJOR LITHOLOGY: silty clay Grainsize: clay Color: 10Y 2.5/1 Sorting: very well sorted Nature of bottom contact: Additional description:
6.4								0				S			DIAT PMAG PMAG	
6.5															PMAG PALLY PMAG PMAG	MAJOR LITHOLOGY: silty clay Grainsize: clay Color: 10Y 3/1 Sorting: very well sorted Nature of bottom contact: Additional description:
6.6															PMAG	
6.7															PMAG	
6.8	200														PMAG	
6.9															PMAG	
7.0															PMAG	
7.1	2							0							PMAG	
7.2															PMAG PWAV	
7.3															PP PMAG	
7.4															PMAG PMAG MACRO	
7.5															PMAG	
7.6															PMAG	
7.7															PMAG IWRH	
7.8	300														PMAG HSCH4	MAJOR LITHOLOGY: silty clay Grainsize: clay Color: 10Y 3/1 Sorting: very well sorted Nature of bottom contact: Additional description:
7.9								0							DIAT PMAG	
8.0	3														PMAG PMAG	MAJOR LITHOLOGY: silty clay Grainsize: clay Color: 10Y 2.5/1 Sorting: very well sorted Nature of bottom contact: Additional description:
8.1								0				S				
8.2	4															
8.3																
8.4																
8.5																
8.6																
8.7																
400																





Site M0062 Hole D Core 6H Cored 14.7-17.7 mbsf

