

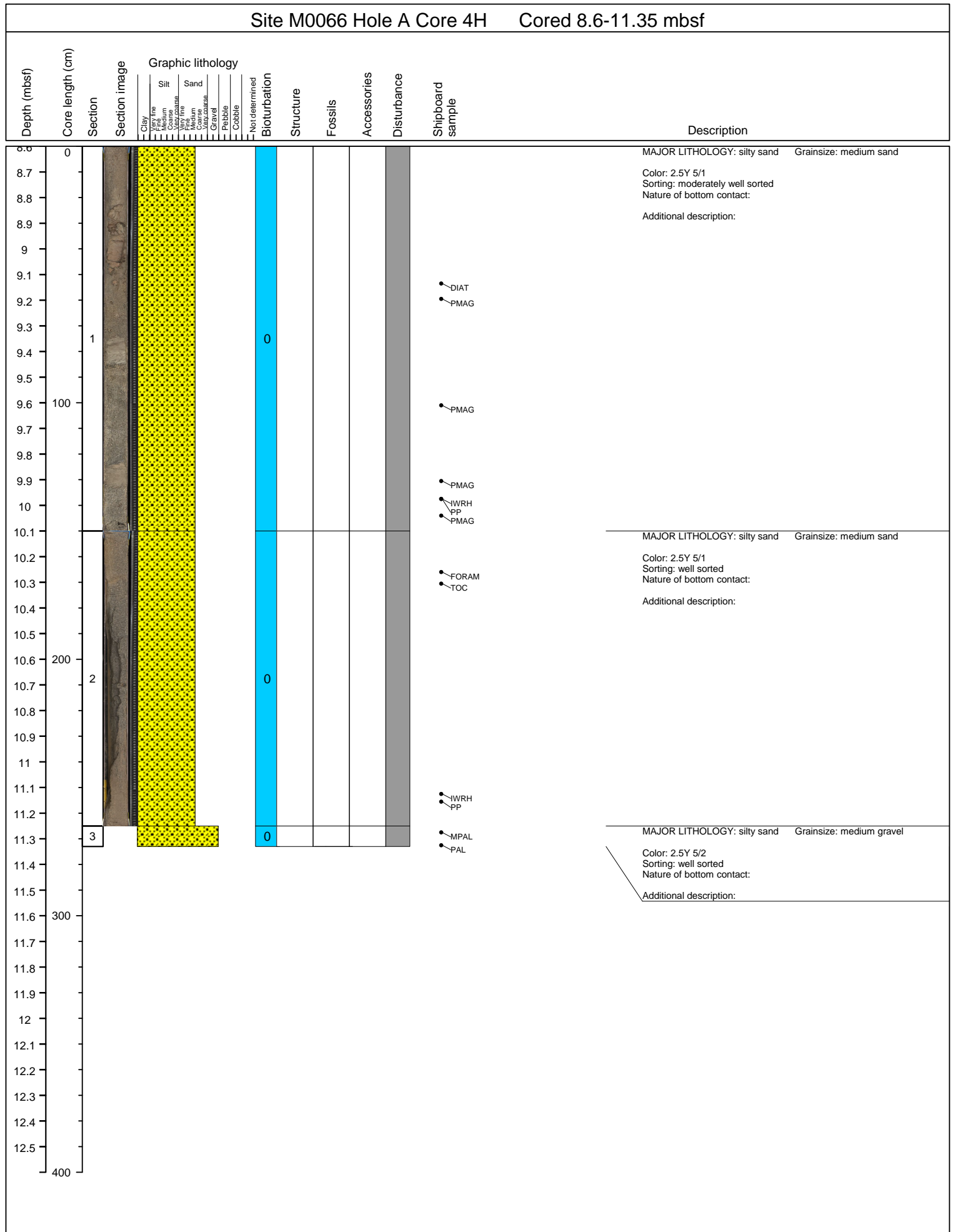
Site M0066 Hole A Core 2H Cored 2-5.3 mbsf

Depth (mbsf)	Core length (cm)	Section	Section image	Graphic lithology										Bioturbation	Structure	Fossils	Accessories	Disturbance	Shipboard sample	Description	
				Clay	Very fine Silt	Medium Silt	Very coarse Silt	Very fine Sand	Medium Sand	Very coarse Sand	Gravel	Pebble	Cobble								Not determined
2.0	0																			DIAT	MAJOR LITHOLOGY: clay Grainsize: clay Color: 10YR 4/1 Sorting: well sorted Nature of bottom contact: Additional description:
2.1																				FORAM	
2.2																					
2.3																				TOC	
2.4																					
2.5																					
2.6																					
2.7																					
2.8	1													0						FORAM	
2.9																				PP	
3.0	100																				
3.1																					
3.2																					
3.3																					
3.4																				IWRH	
3.5																				HSC4 DIAT	MAJOR LITHOLOGY: clay Grainsize: clay
3.6																					Color: 10YR 4/2 Sorting: well sorted Nature of bottom contact: Additional description:
3.7																				FORAM	
3.8																					
3.9																					
4.0	200																				
4.1																					
4.2																					
4.3	2													0							
4.4																				PP	
4.5																					
4.6																					
4.7																					
4.8																					
4.9																				IWRH	
5.0	300																			TOC HSC4 DIAT	MAJOR LITHOLOGY: clay Grainsize: clay
5.1																					Color: 10YR 5/1 Sorting: well sorted Nature of bottom contact: Additional description:
5.2														0							MAJOR LITHOLOGY: clay Grainsize: clay
5.3																				PALY	
5.4	4													0							Color: 2.5Y 5/3 Sorting: very well sorted Nature of bottom contact: Additional description:
5.5																				MPAL	
5.6																					
5.7																					
5.8																					
5.9																					
6.0	400																				

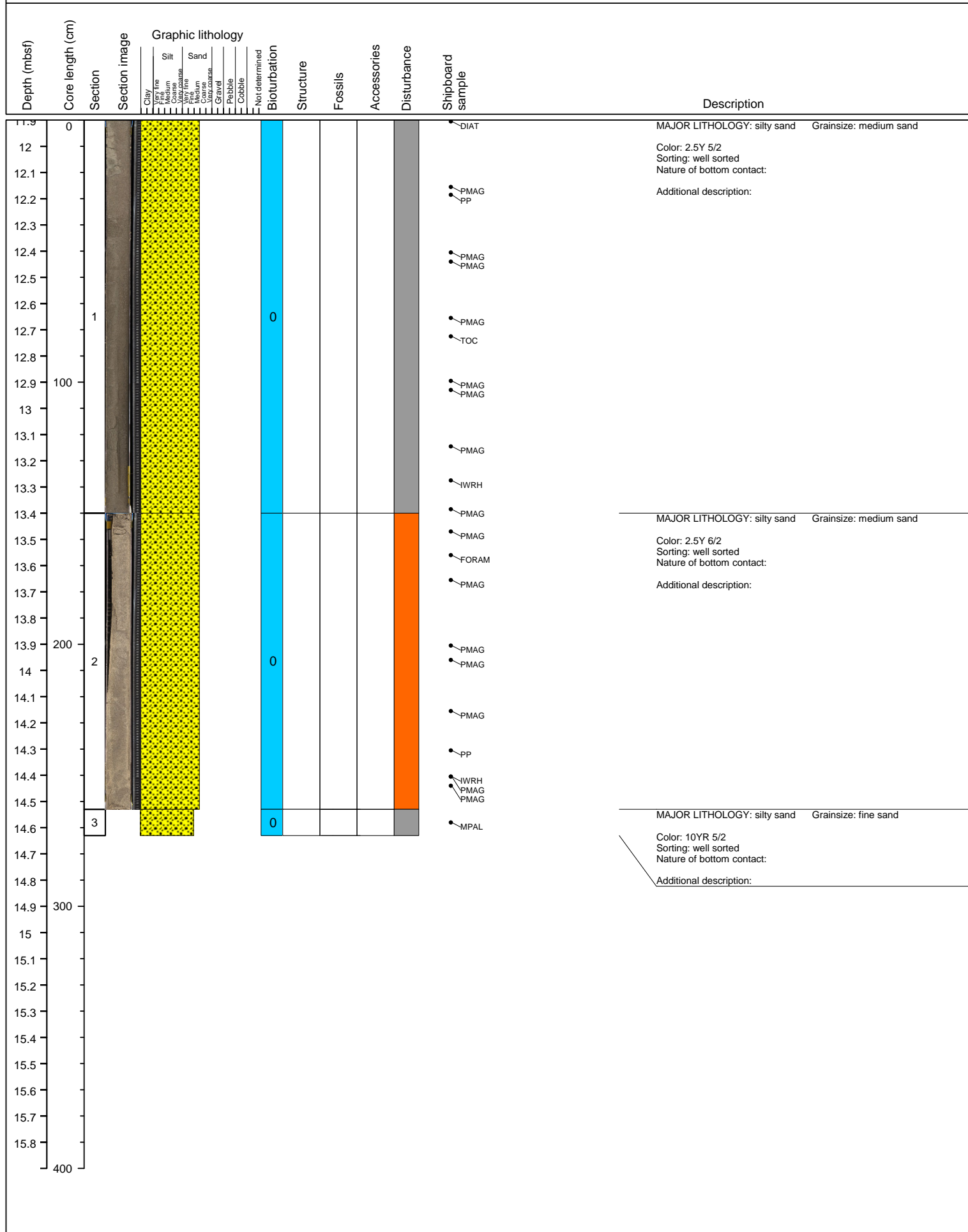
Site M0066 Hole A Core 3H Cored 5.3-8.6 mbsf

Depth (mbsf)	Core length (cm)	Section	Section image	Graphic lithology	Not determined	Bioturbation	Structure	Fossils	Accessories	Disturbance	Shipboard sample	Description	
				Clay Very fine Medium Coarse Very fine Medium Coarse Very coarse Sand Very fine Medium Coarse Very coarse Gravel Pebble Cobble Not determined									
5.3	0											MAJOR LITHOLOGY: sandy silt Grainsize: Color: 2.5Y 6/1 Sorting: very well sorted Nature of bottom contact: Additional description:	
5.4											DIAT		
5.5													
5.6													
5.7											PMAG		
5.8											PP PWAV		
5.9											PMAG		
6.0	1					0	III						
6.1													
6.2											PMAG		
6.3	100												
6.4											PMAG		
6.5											IWRH TOC		
6.6											HSCH4 PMAG	MAJOR LITHOLOGY: sandy silt Grainsize: Color: 2.5Y 6/1 Sorting: very well sorted Nature of bottom contact: Additional description:	
6.7													
6.8													
6.9											PMAG	Additional description:	
7.0													
7.1													
7.2											PMAG PP		
7.3	200												
7.4	2					0	III				PMAG		
7.5													
7.6											PMAG		
7.7													
7.8													
7.9											PMAG		
8.0													
8.1											IWRH		
8.2	3										PMAG		
8.3	300												
8.4													
8.5													
8.6													
8.7													
8.8													
8.9													
9.0													
9.1													
9.2	400												

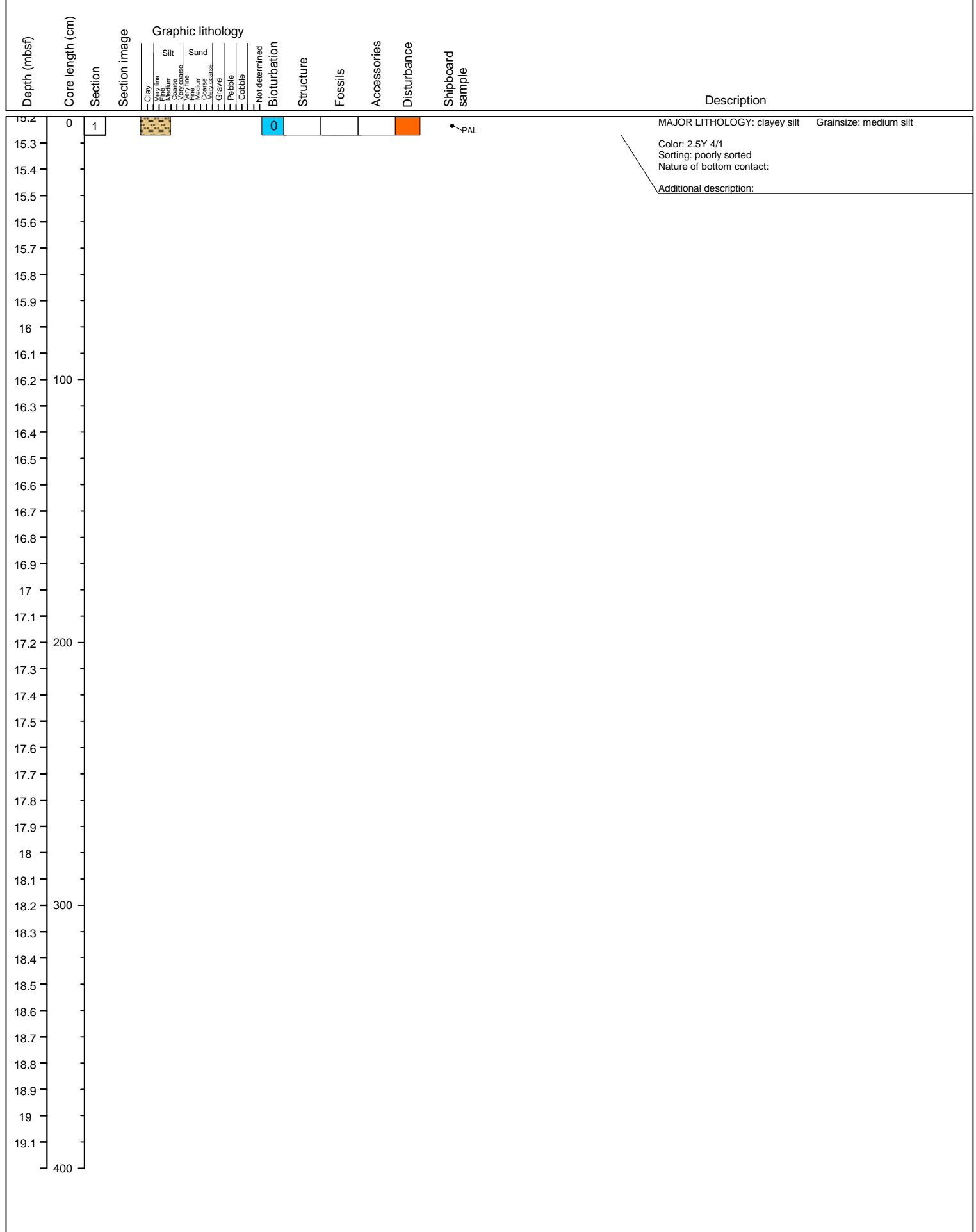
Site M0066 Hole A Core 4H Cored 8.6-11.35 mbsf



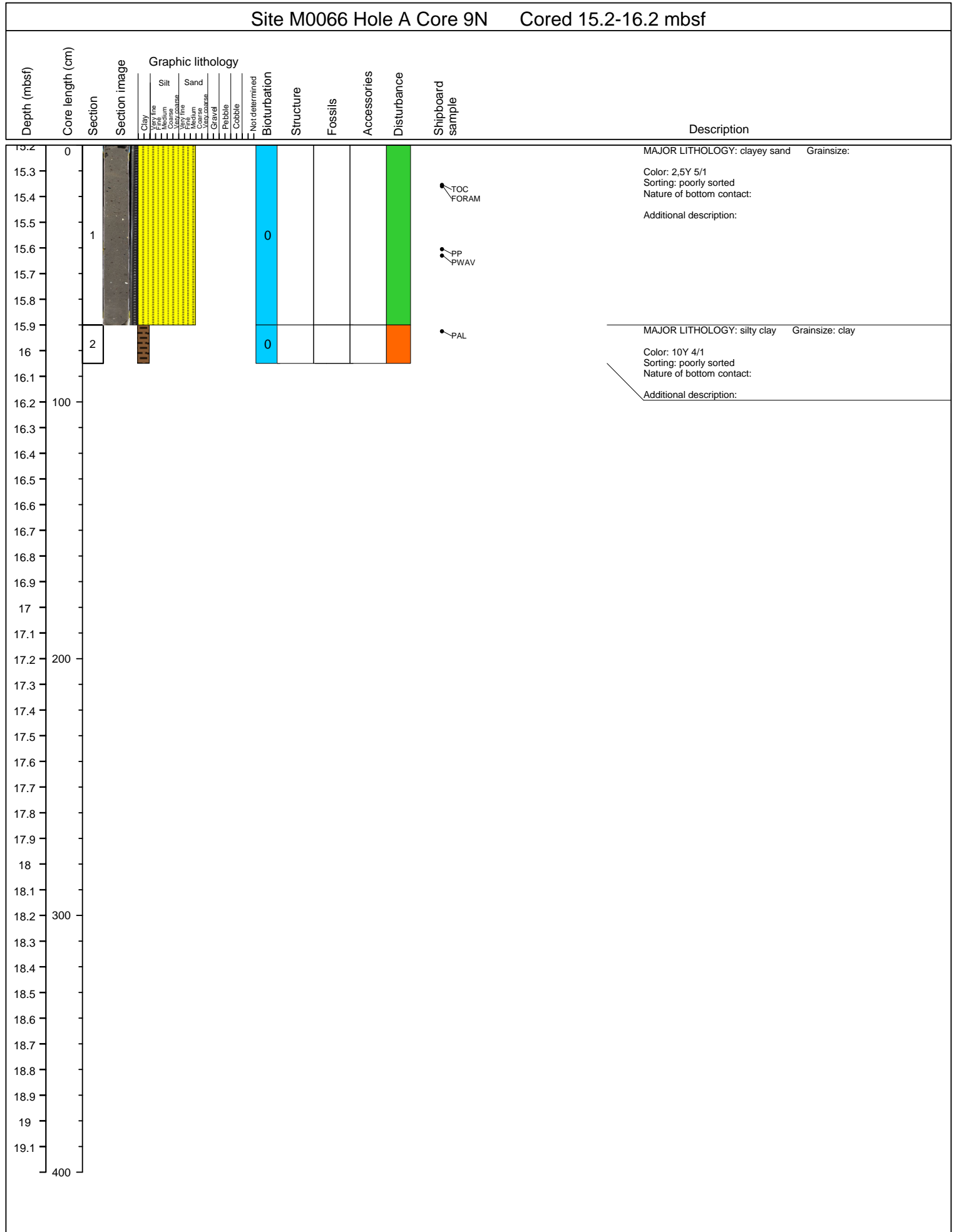
Site M0066 Hole A Core 6H Cored 11.9-14.63 mbsf



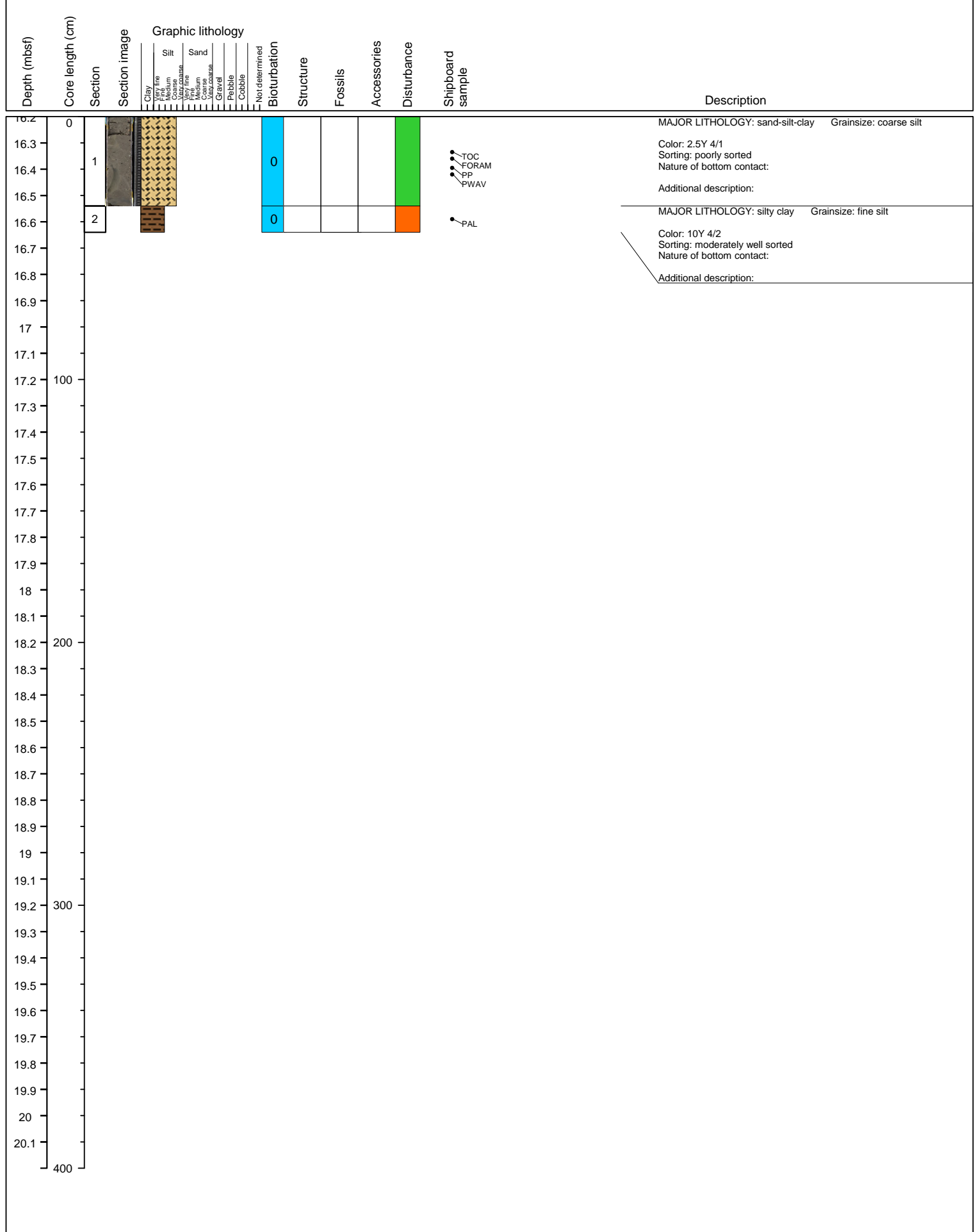
Site M0066 Hole A Core 8S Cored 15.2-15.27 mbsf



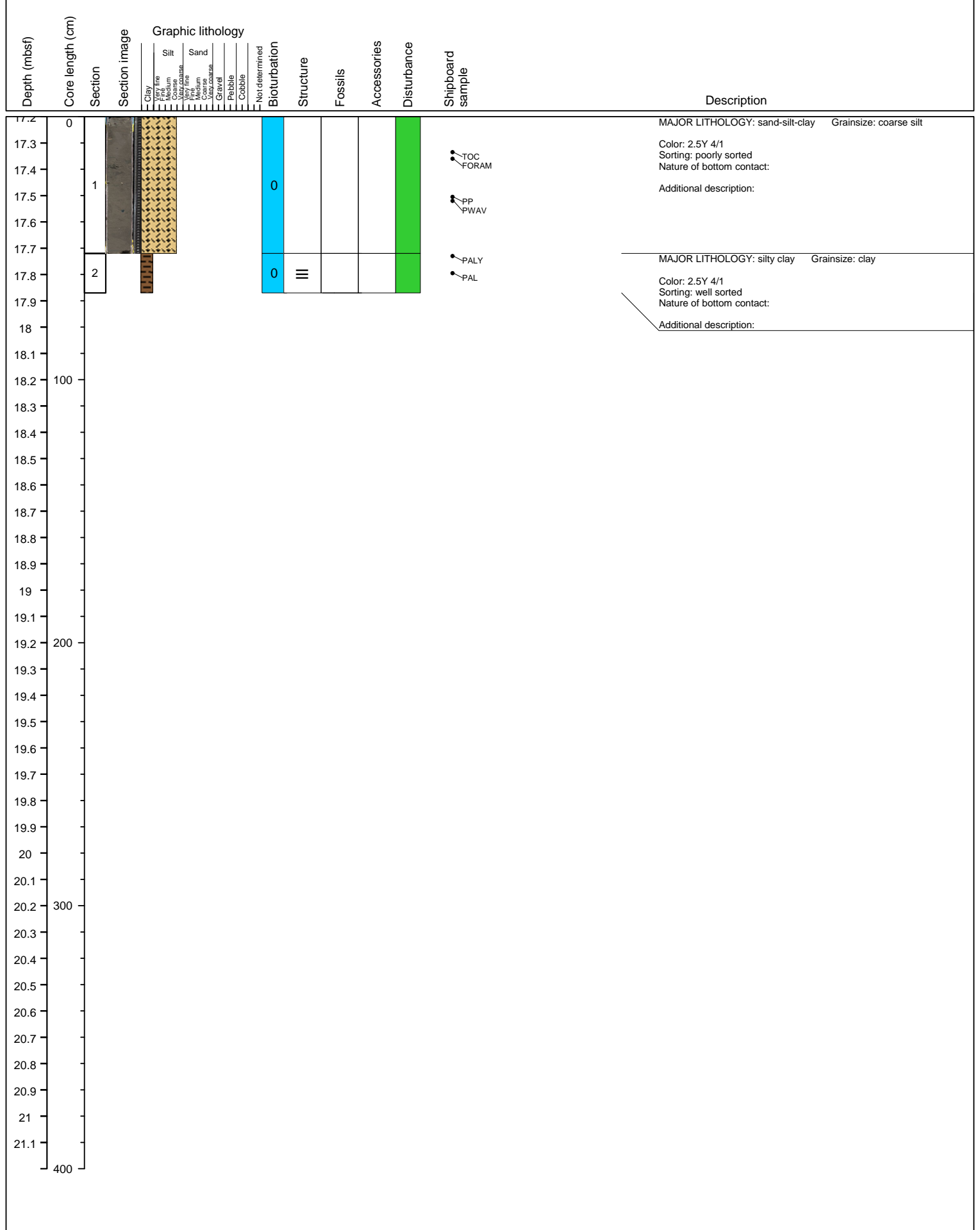
Site M0066 Hole A Core 9N Cored 15.2-16.2 mbsf



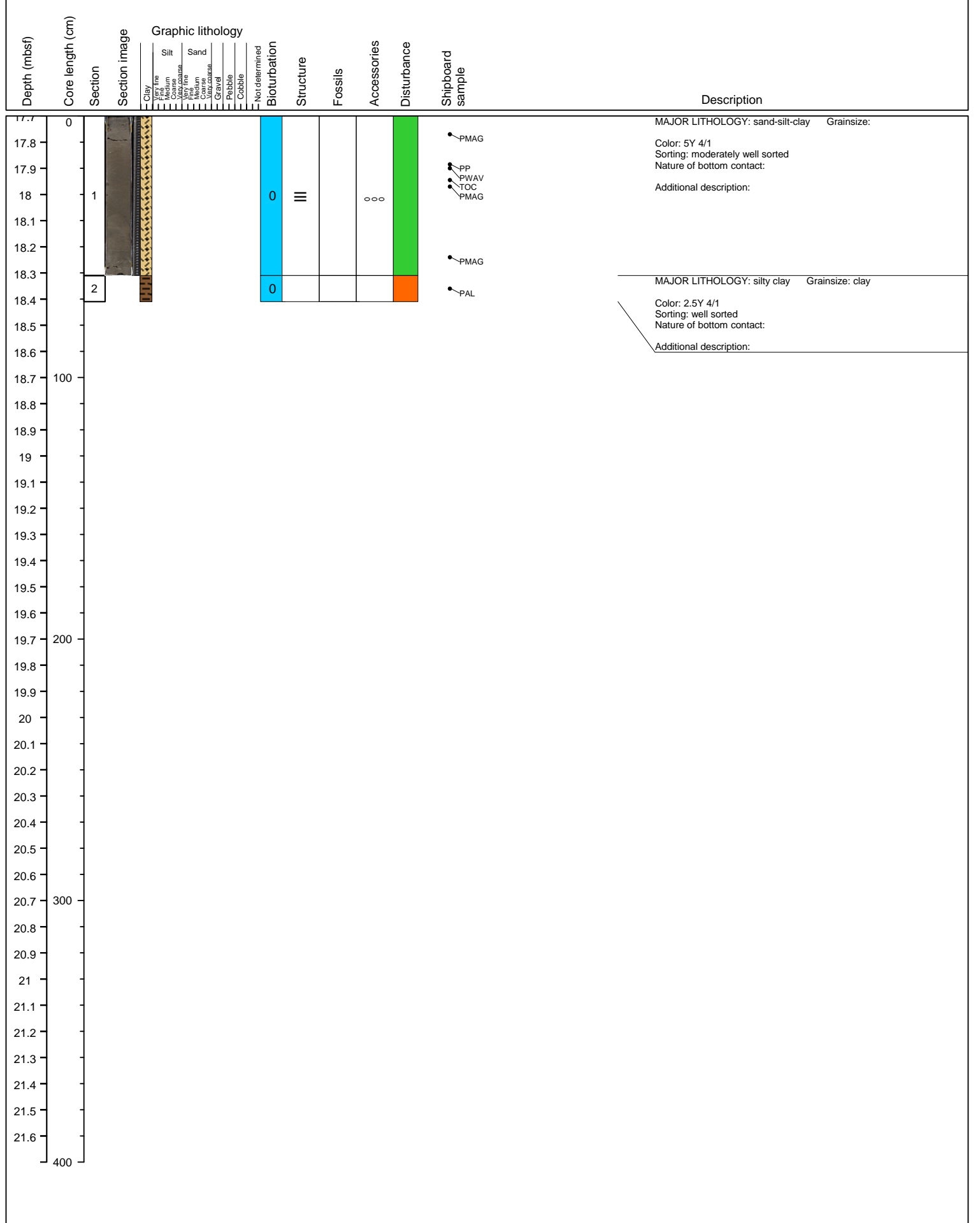
Site M0066 Hole A Core 10N Cored 16.2-17.2 mbsf

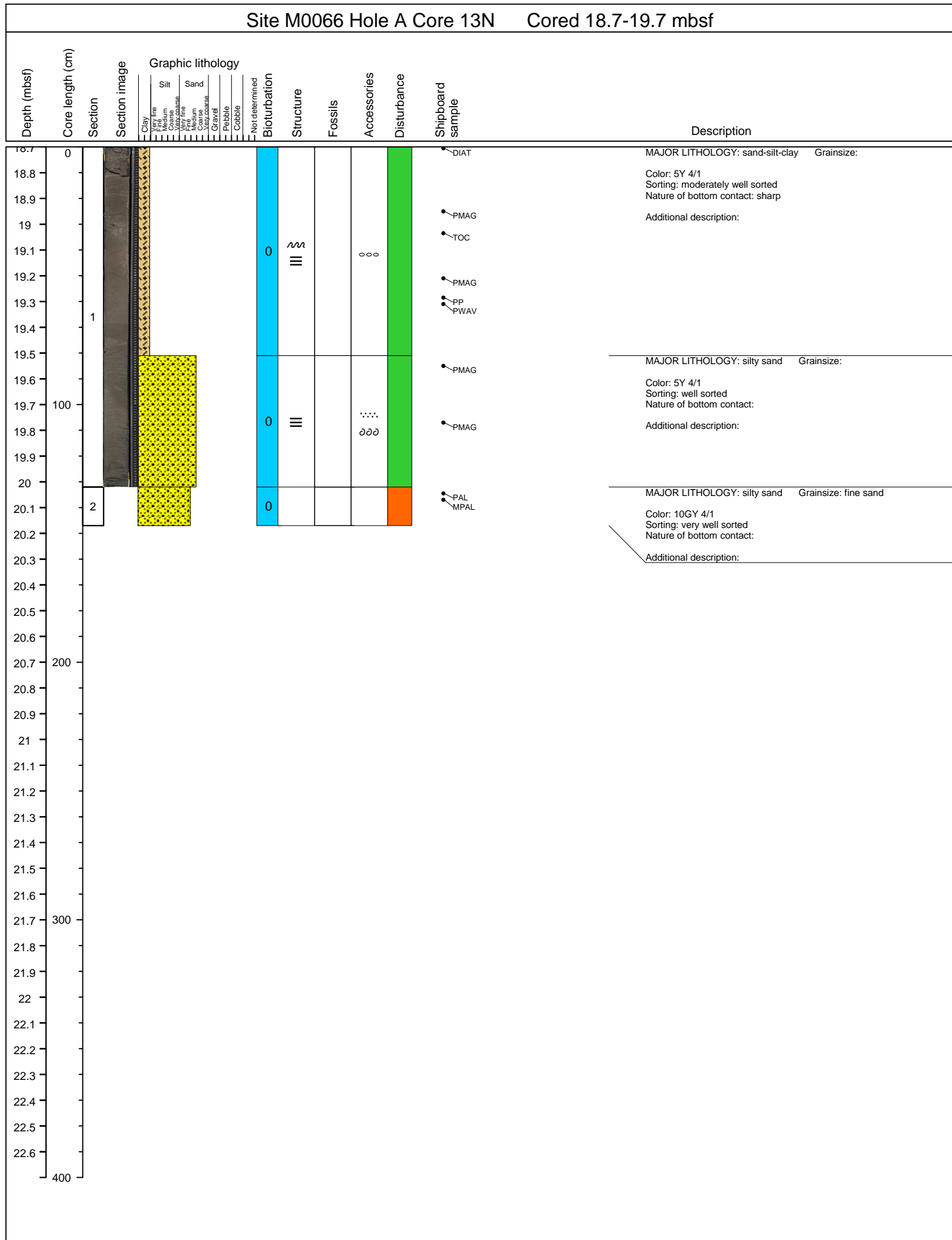


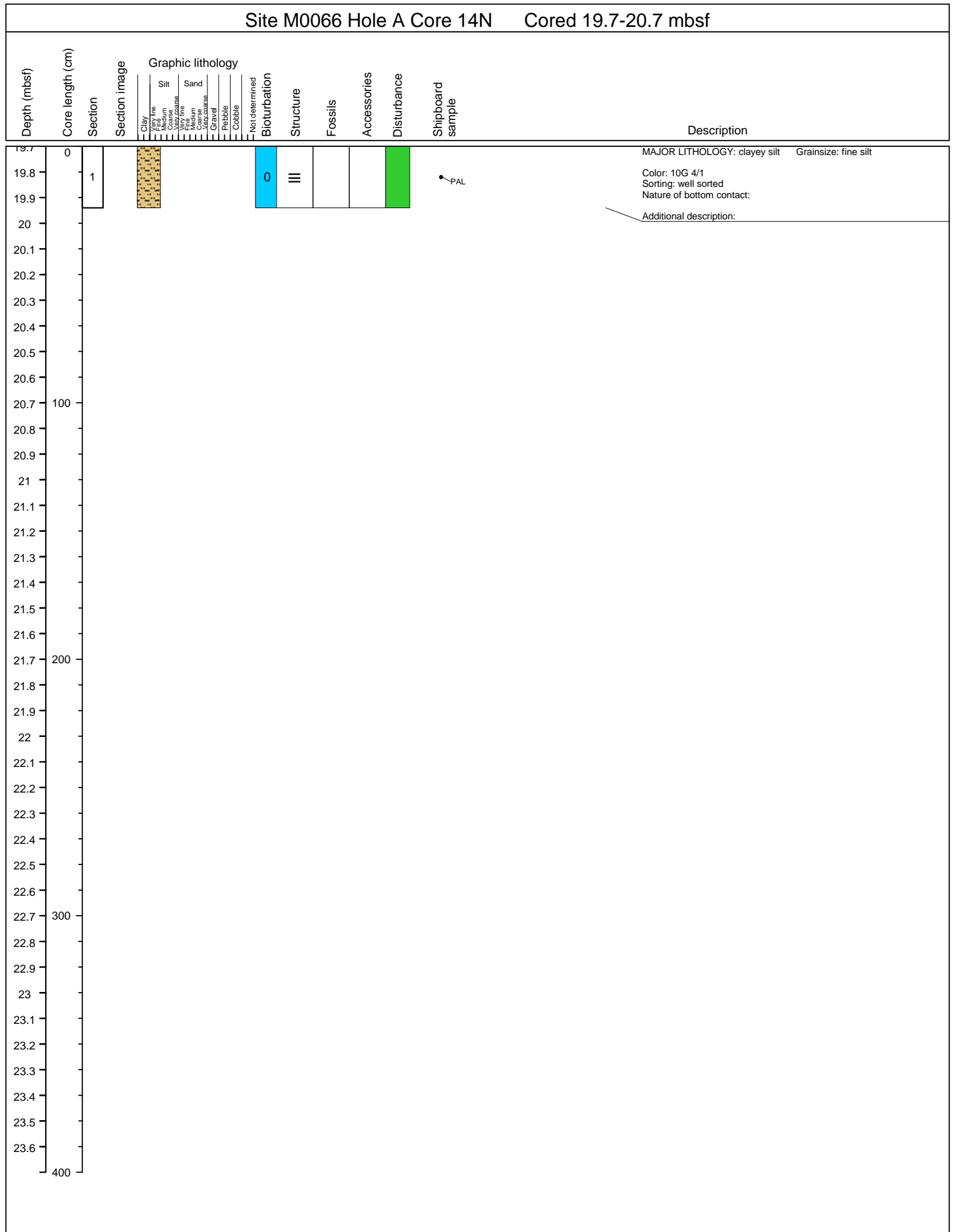
Site M0066 Hole A Core 11N Cored 17.2-17.7 mbsf

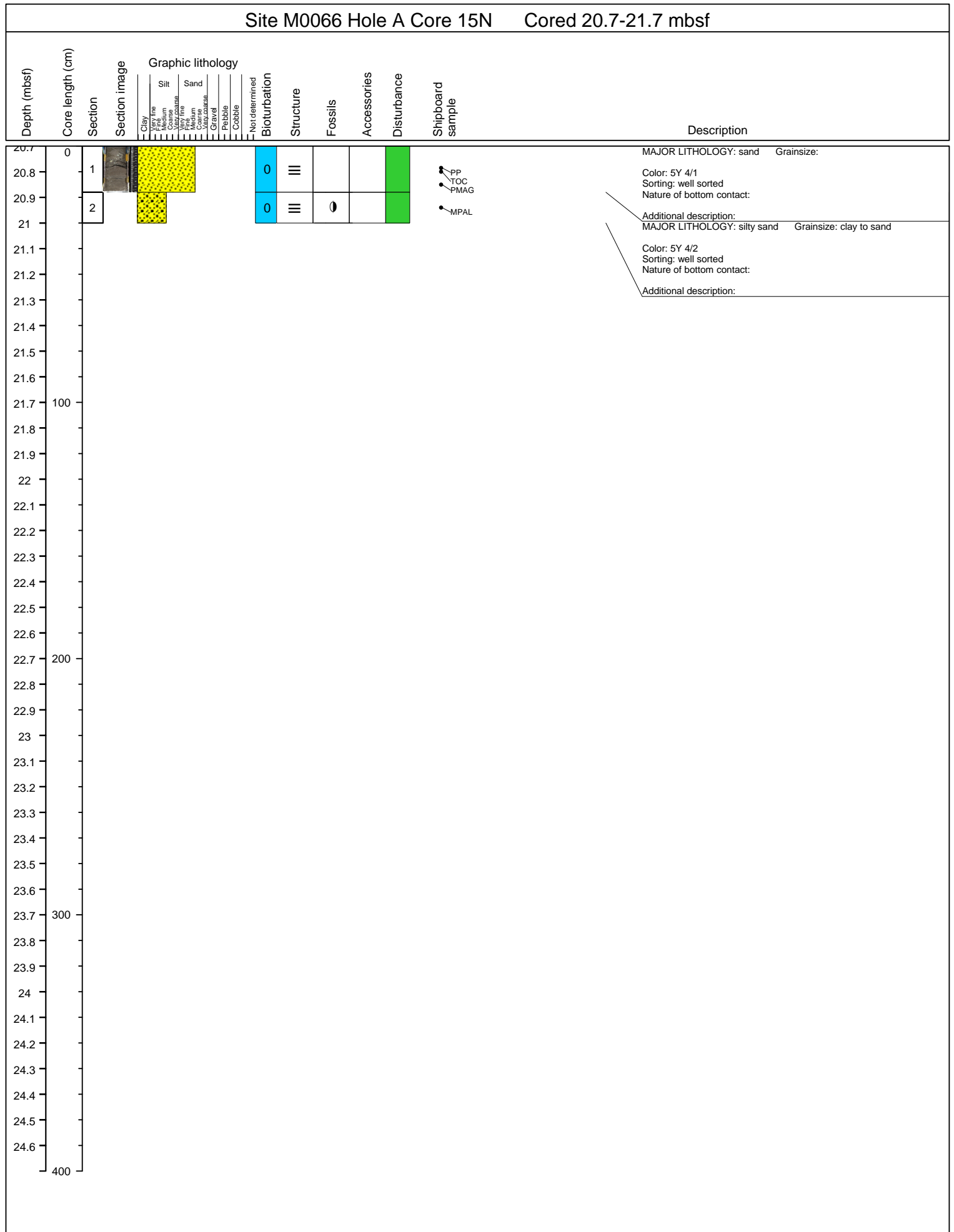


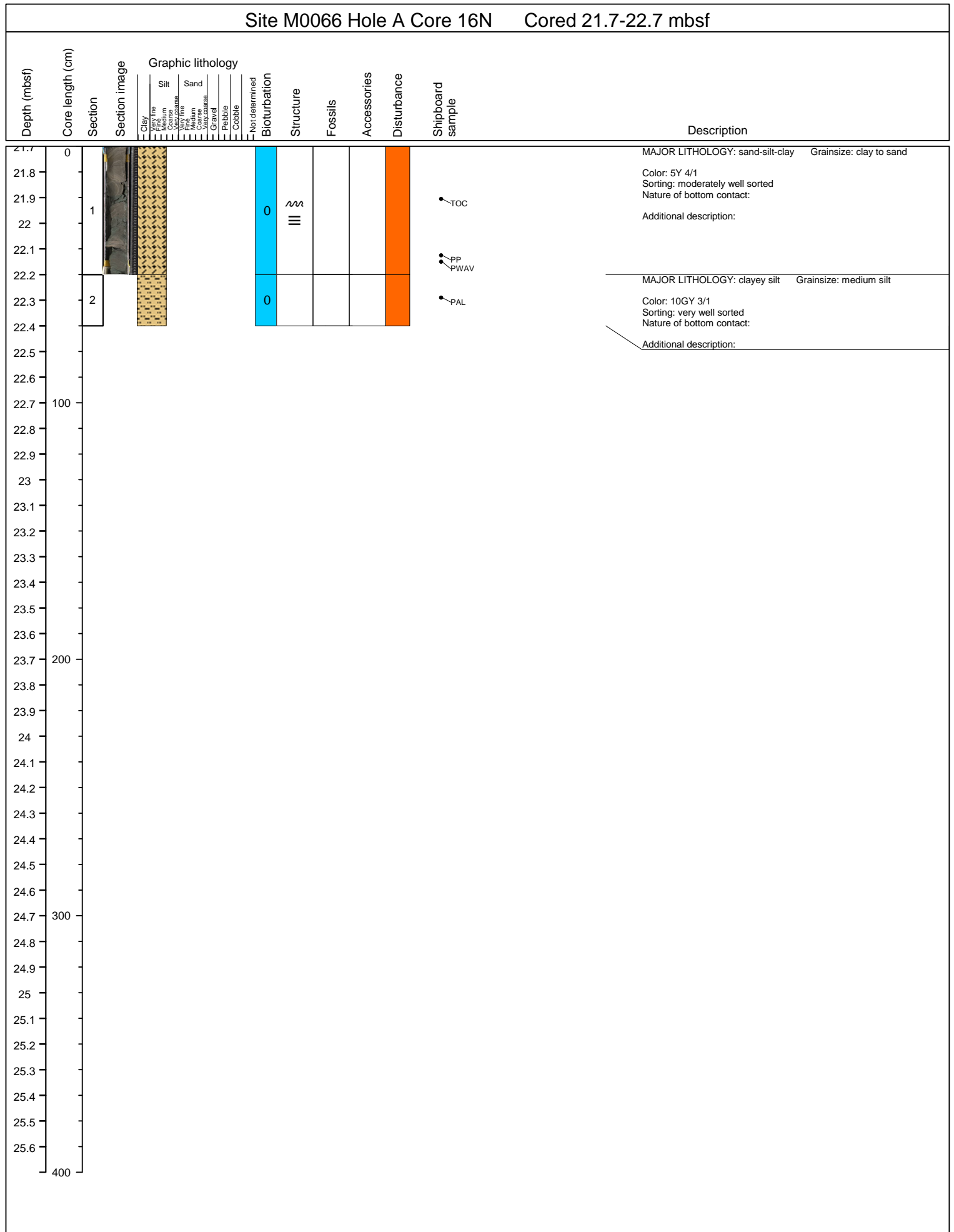
Site M0066 Hole A Core 12N Cored 17.7-18.7 mbsf



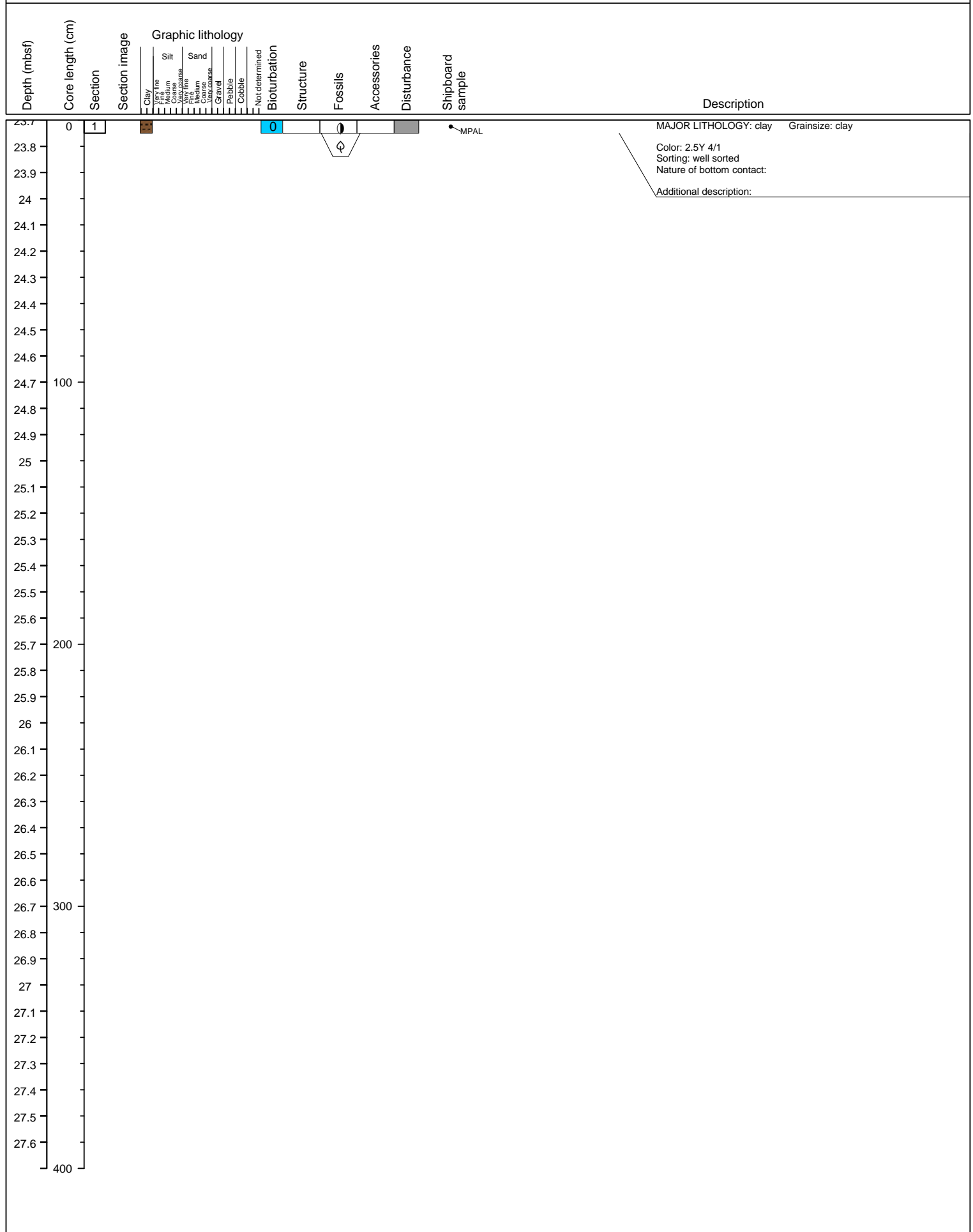






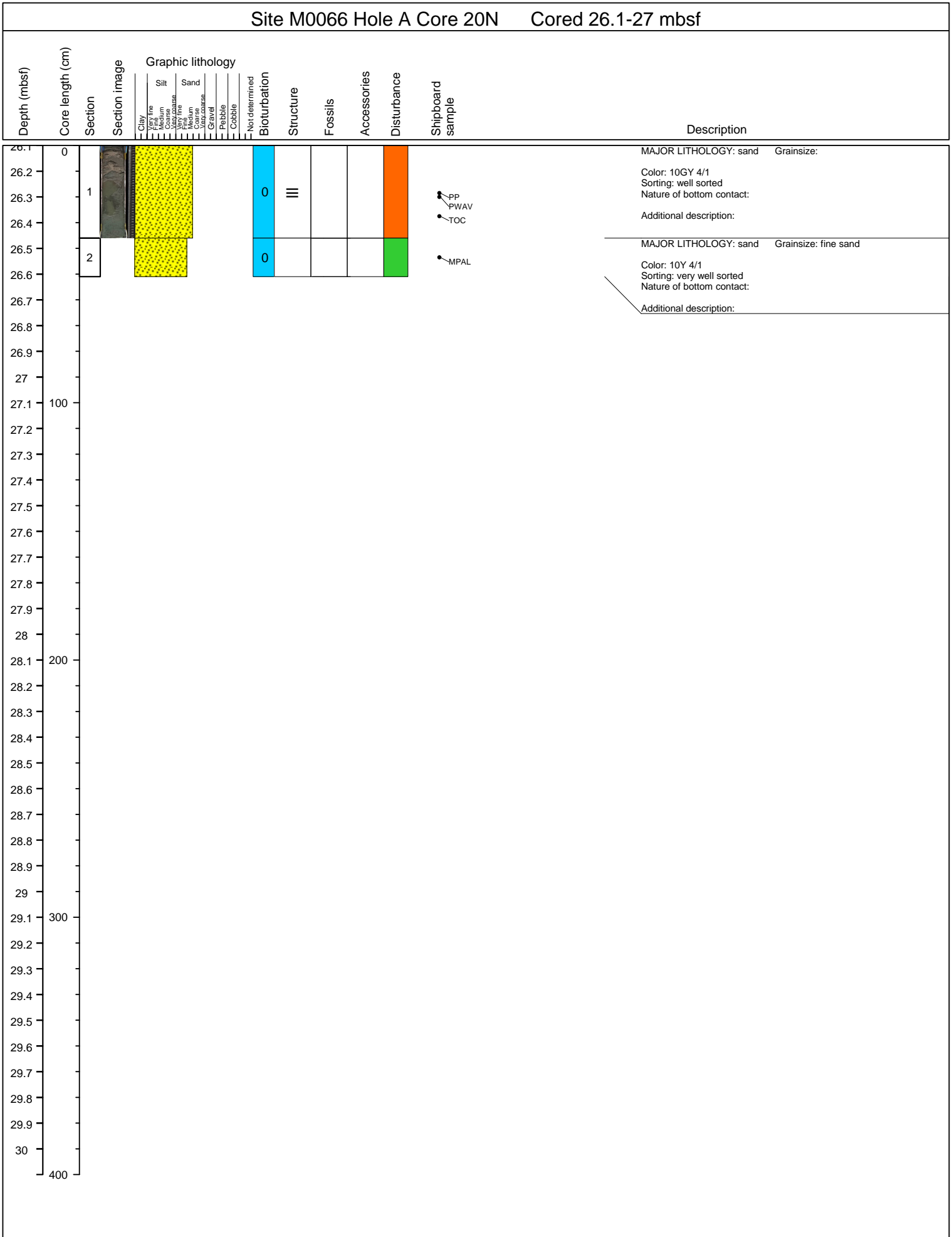


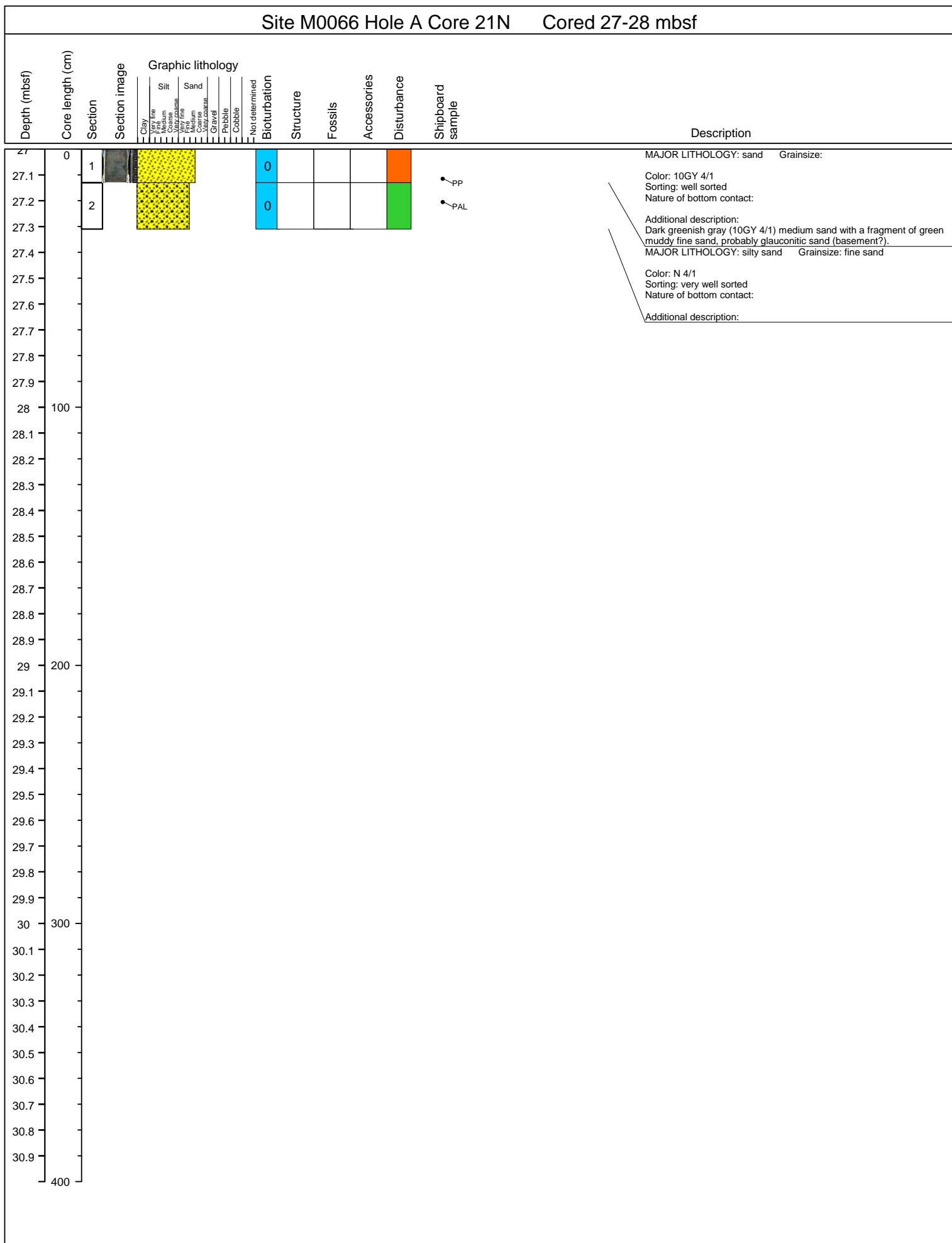
Site M0066 Hole A Core 18N Cored 23.7-24.7 mbsf



Site M0066 Hole A Core 19H Cored 24.7-27.81 mbsf											
Depth (mbsf)	Core length (cm)	Section	Section image	Graphic lithology	Bioturbation	Structure	Fossils	Accessories	Disturbance	Shipboard sample	Description
				Clay Very fine Medium Silt Very fine Sand Very fine Medium Very coarse Gravel Pebble Cobble Not determined							
24.7	0				0						MAJOR LITHOLOGY: silty sand Grainsize: Color: 5Y 4/1 Sorting: moderately well sorted Nature of bottom contact: Additional description: dark gray silty sand; no sedimentary structures visible (soupy); seems to be more silt to the top?; metamorphic rock clast at 47-50cm; glauconite content around 1-3%
24.8											
24.9											
25											
25.1											
25.2											
25.3											
25.4		1									
25.5											
25.6											
25.7	100										
25.8											
25.9											
26											
26.1										PP	
26.2											
26.3											MAJOR LITHOLOGY: sand Grainsize: Color: 10Y 4/1 Sorting: well sorted Nature of bottom contact: Additional description: dark greenish gray medium-sand; mostly highly disturbed (0-86cm), 86-141 perhaps also highly disturbed?; homogeneous with no visible sed. structures only one silt layer at 62-65cm with lamination (mm-scale); glauconite grain content around 5%
26.4											
26.5											
26.6											
26.7	200										
26.8											
26.9		2									
27											
27.1										TOC	
27.2										PP	
27.3											
27.4											
27.5											
27.6											
27.7	300	3			0					PAL	MAJOR LITHOLOGY: silty sand Grainsize: medium sand Color: N 4/1 Sorting: very well sorted Nature of bottom contact: Additional description:
27.8											
27.9											
28											
28.1											
28.2											
28.3											
28.4											
28.5											
28.6											
	400										

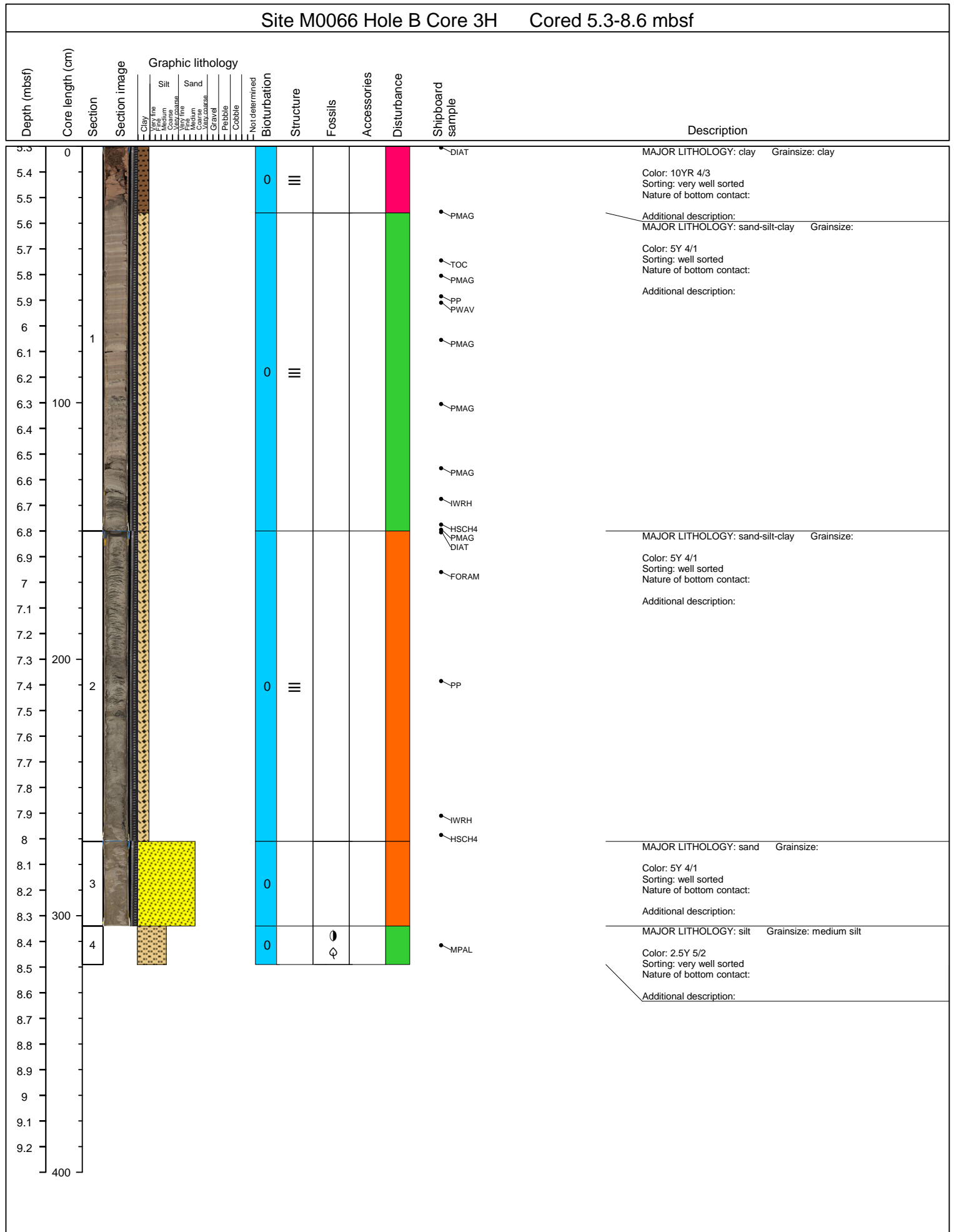
Site M0066 Hole A Core 20N Cored 26.1-27 mbsf

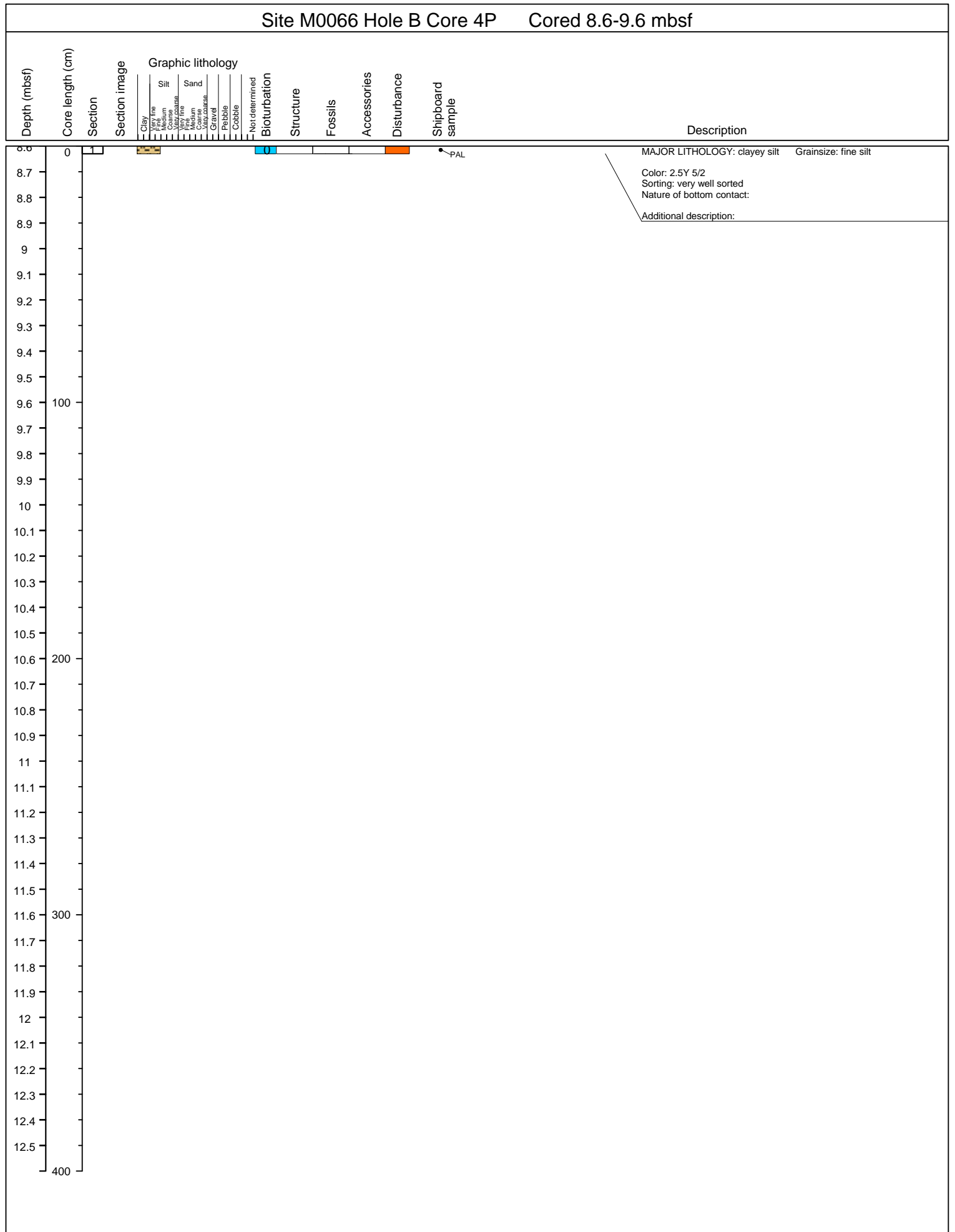


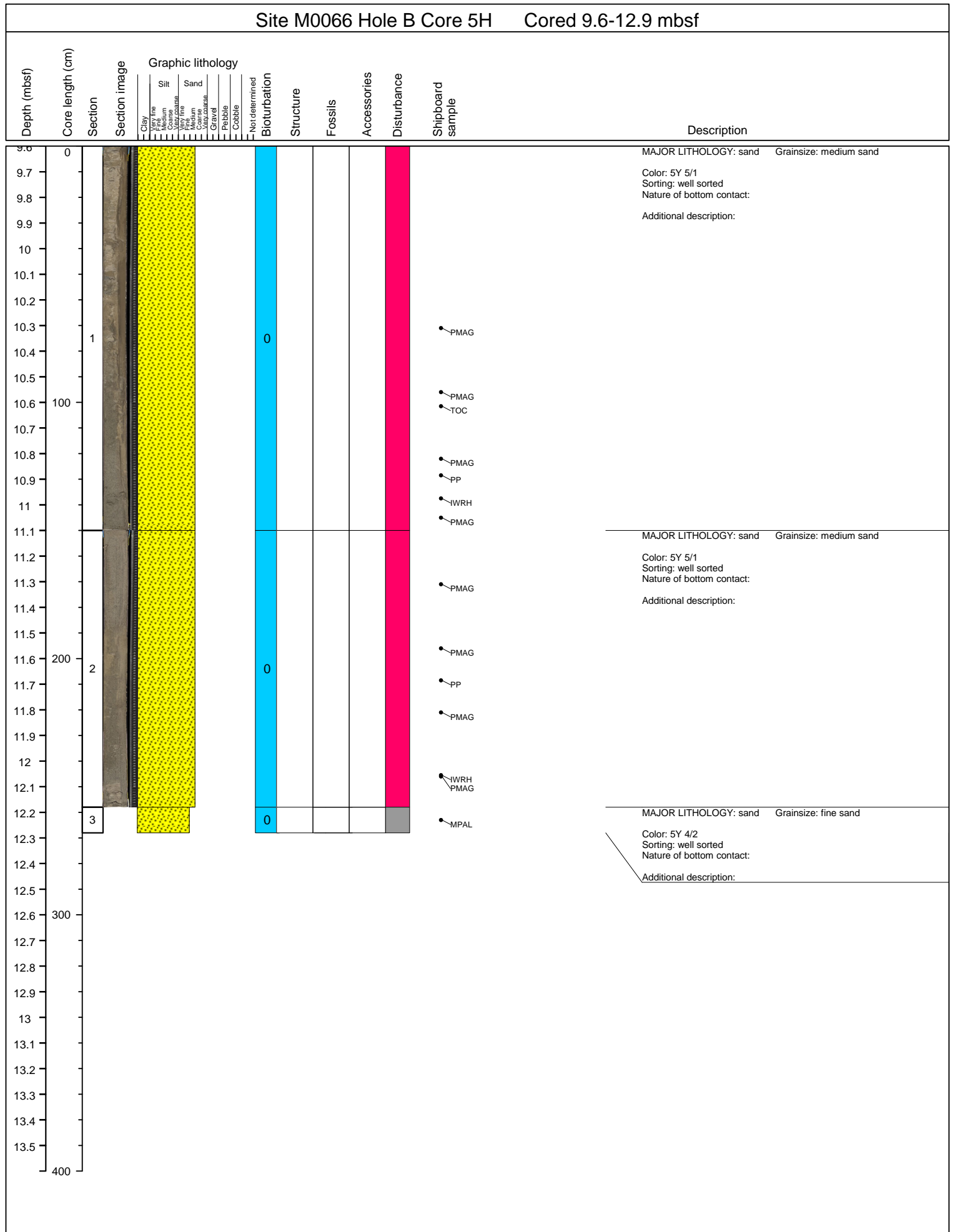


Site M0066 Hole B Core 2H Cored 2-5.3 mbsf

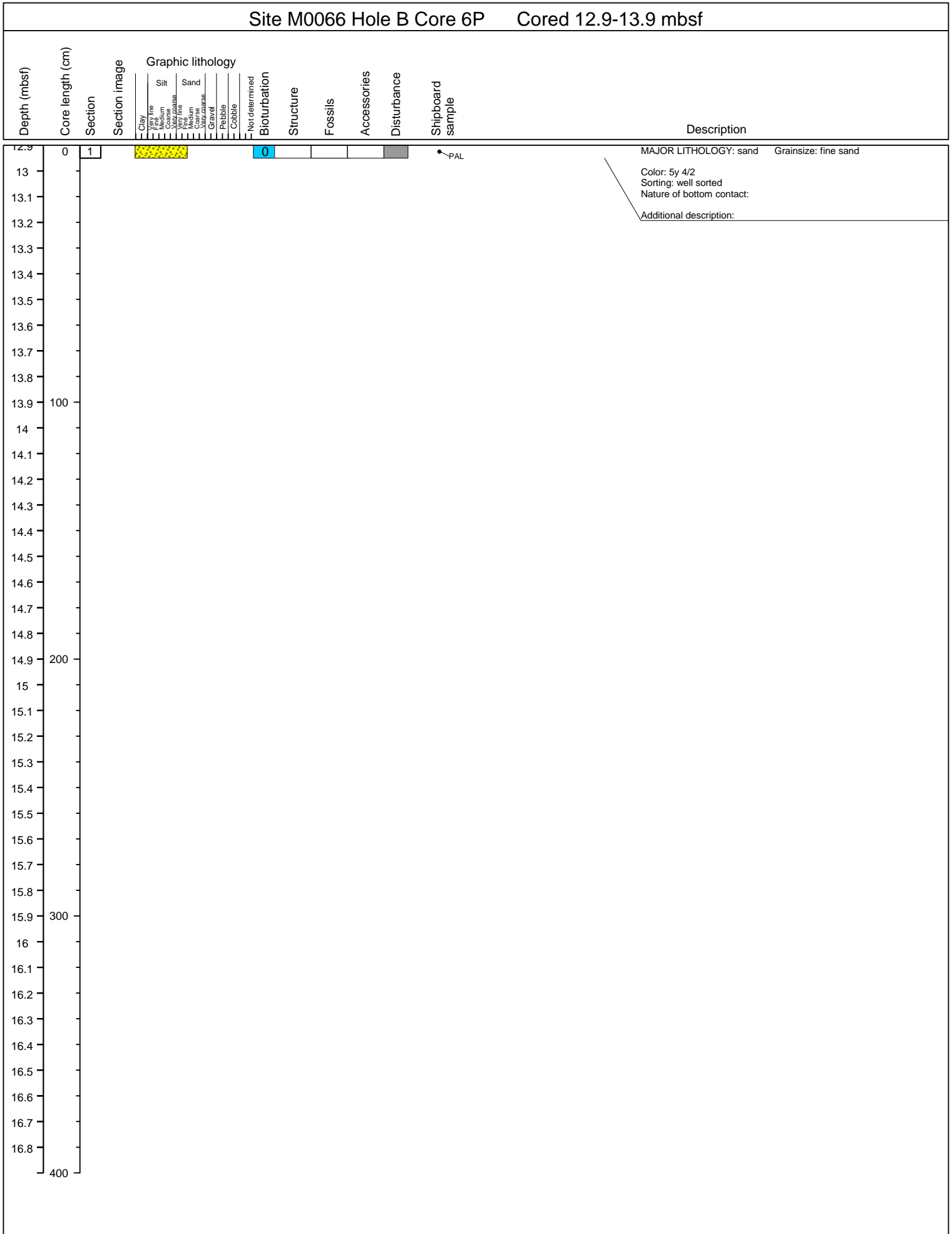
Depth (mbsf)	Core length (cm)	Section	Section image	Graphic lithology										Bioturbation	Structure	Fossils	Accessories	Disturbance	Shipboard sample	Description	
				Clay	Very fine Silt	Medium Silt	Very coarse Silt	Very fine Sand	Medium Sand	Very coarse Sand	Gravel	Pebble	Cobble								Not determined
2.0	0																			DIAT	MAJOR LITHOLOGY: silty clay Grainsize: Color: 10YR 4/2 Sorting: very well sorted Nature of bottom contact: Additional description:
2.1																				FORAM	
2.2																				PMAG	
2.3																					
2.4																					
2.5																				PMAG	
2.6																				PP	
2.7		1																			
2.8																				PMAG FORAM	
2.9																				TOC	
3.0	100																			PMAG	
3.1																					
3.2																				PMAG	
3.3																				IWRH	
3.4																				HSC4 DIAT PMAG	MAJOR LITHOLOGY: silty clay Grainsize: Color: 10YR 4/2 Sorting: very well sorted Nature of bottom contact: Additional description:
3.5																					
3.6																				FORAM	
3.7																				PMAG	
3.8																					
3.9																					
4.0	200																			PMAG	
4.1																				PP	
4.2		2																			
4.3																				PMAG	
4.4																					
4.5																				PMAG	
4.6																					
4.7																				PMAG	
4.8																				IWRH	
4.9																					
5.0	300																			HSC4 PMAG DIAT	MAJOR LITHOLOGY: silty clay Grainsize: Color: 10YR 4/2 Sorting: very well sorted Nature of bottom contact: Additional description:
5.1		3																			
5.2																				PMAG	MAJOR LITHOLOGY: clay Grainsize: clay Color: 2.5Y 4/2 Sorting: very well sorted Nature of bottom contact: Additional description:
5.3																					
5.4		4																		MPAL	
5.5																					
5.6																					
5.7																					
5.8																					
5.9																					
400																					



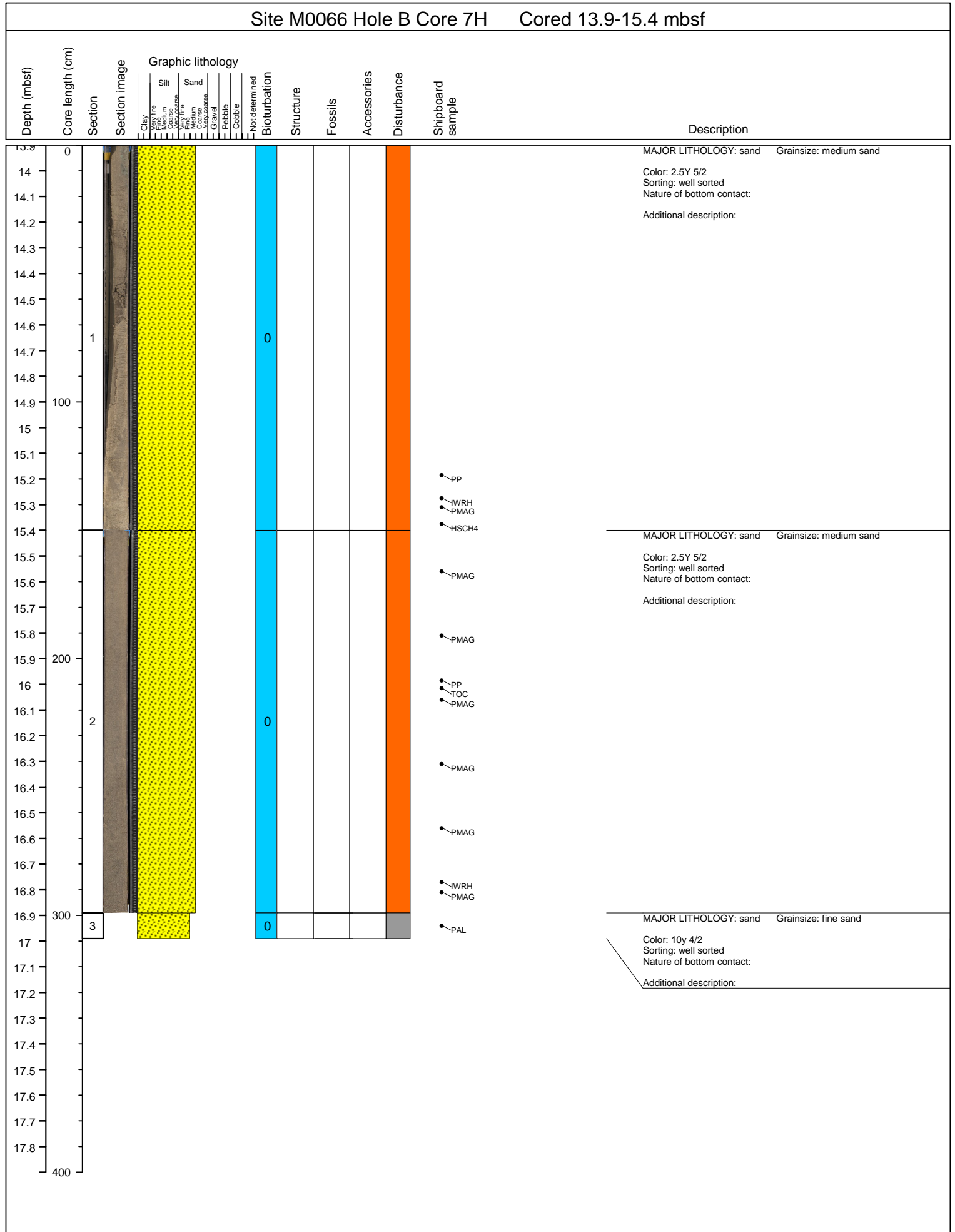


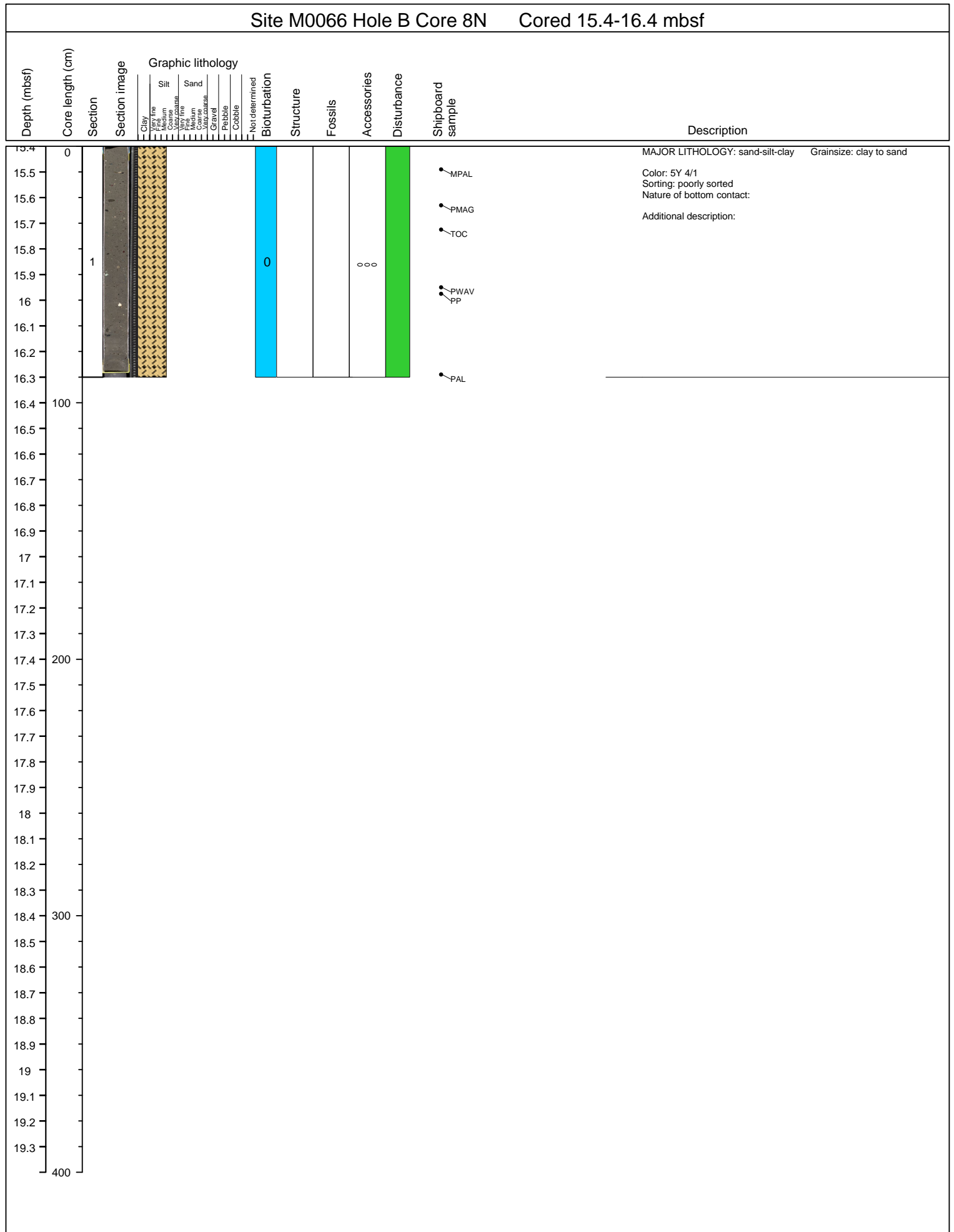


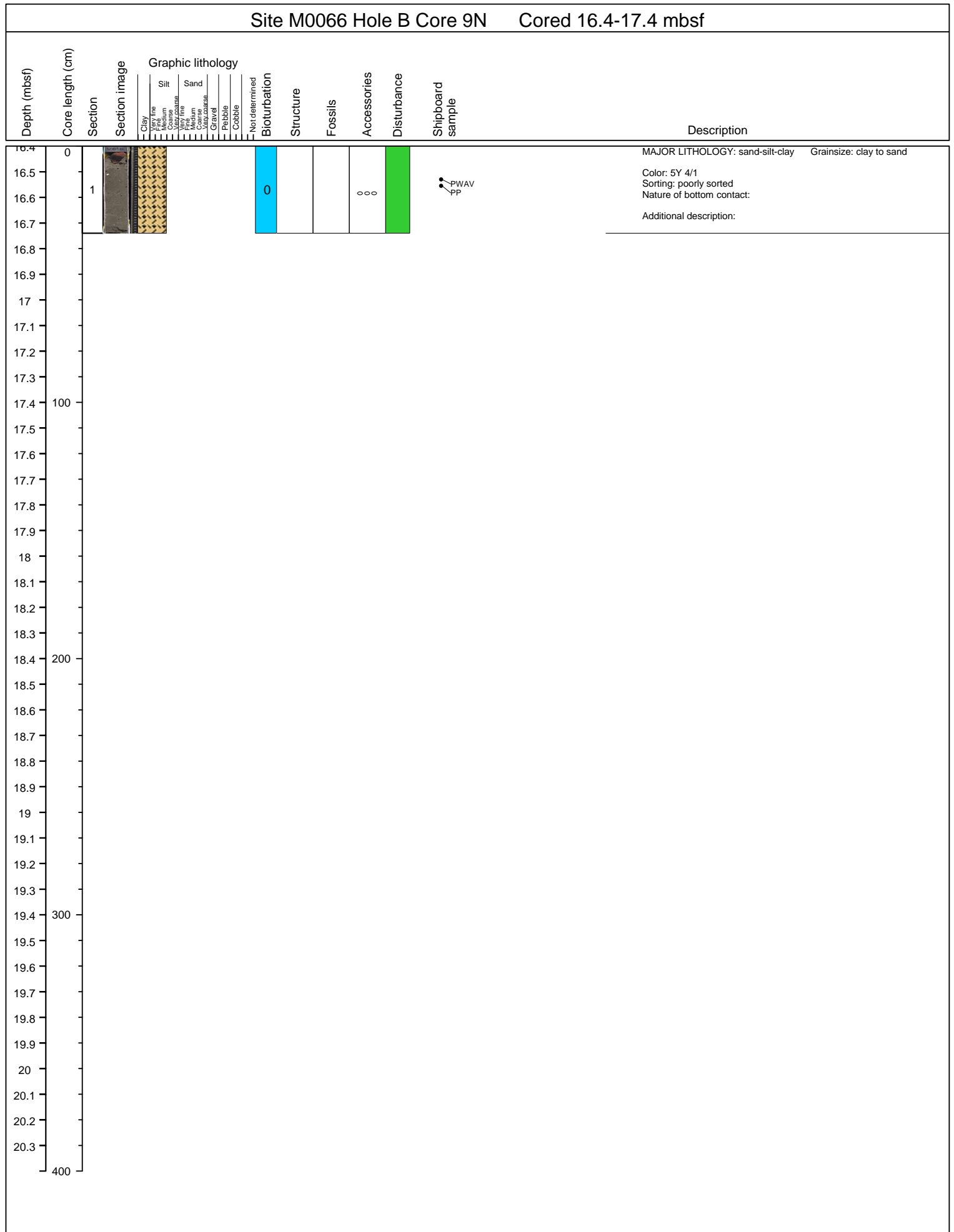
Site M0066 Hole B Core 6P Cored 12.9-13.9 mbsf



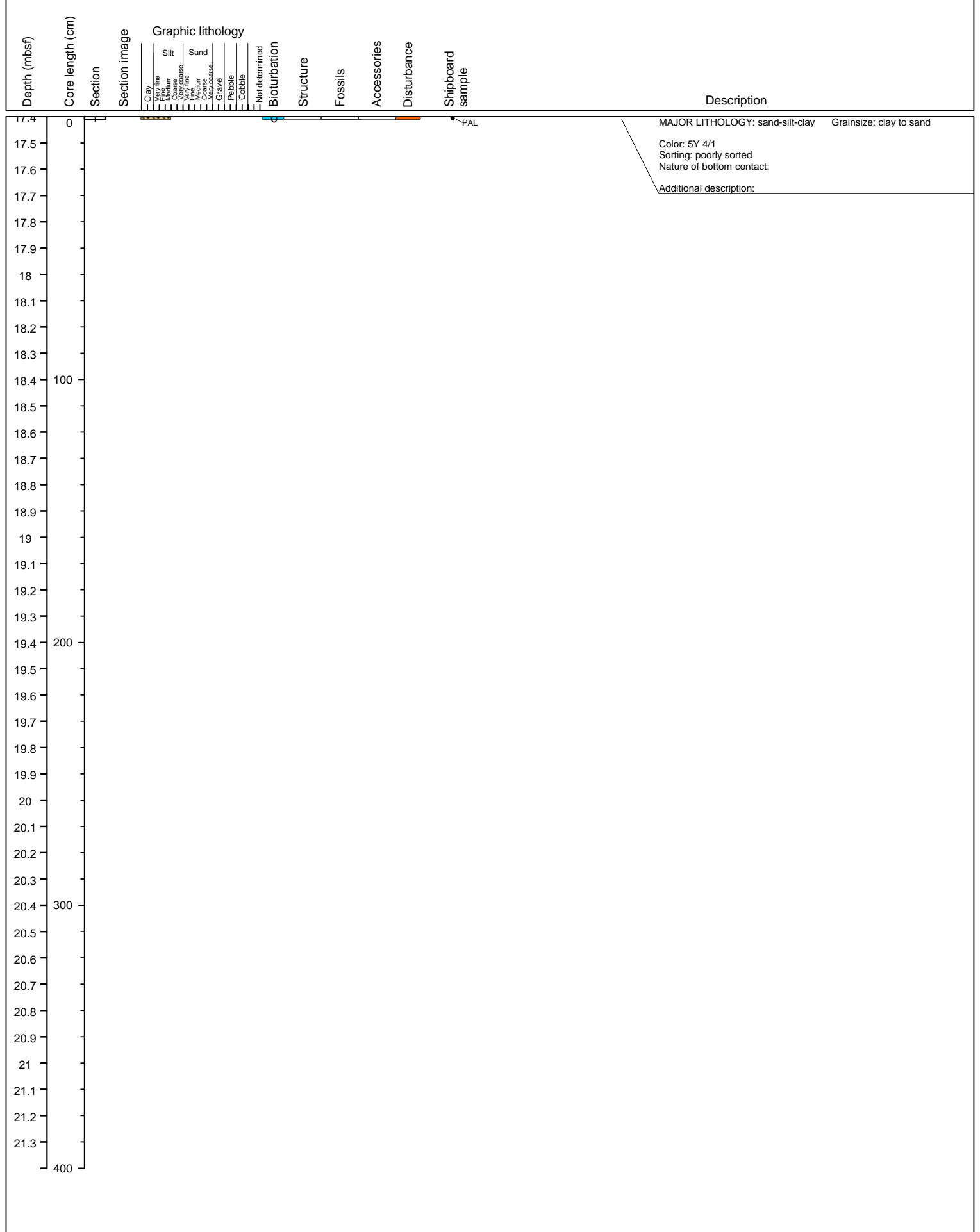
Site M0066 Hole B Core 7H Cored 13.9-15.4 mbsf







Site M0066 Hole B Core 10N Cored 17.4-18.4 mbsf



Site M0066 Hole B Core 12H Cored 19.4-21.4 mbsf

