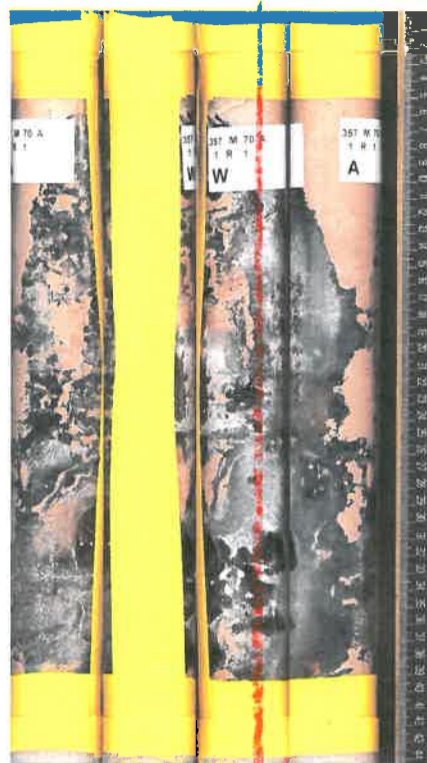


70A 1R



Unit	Lithology	Minerals	Veins	Structure Deformations	Notes
	Basaltic Breccia	nothing visible cryptic alteration		large pieces can be cut	<ul style="list-style-type: none"> • Foraminiferal • Carbonate sand throughout. • 2-27cm rubble. • Carbonate-coating along fragment edges. • Fragments to 10cm, angular.