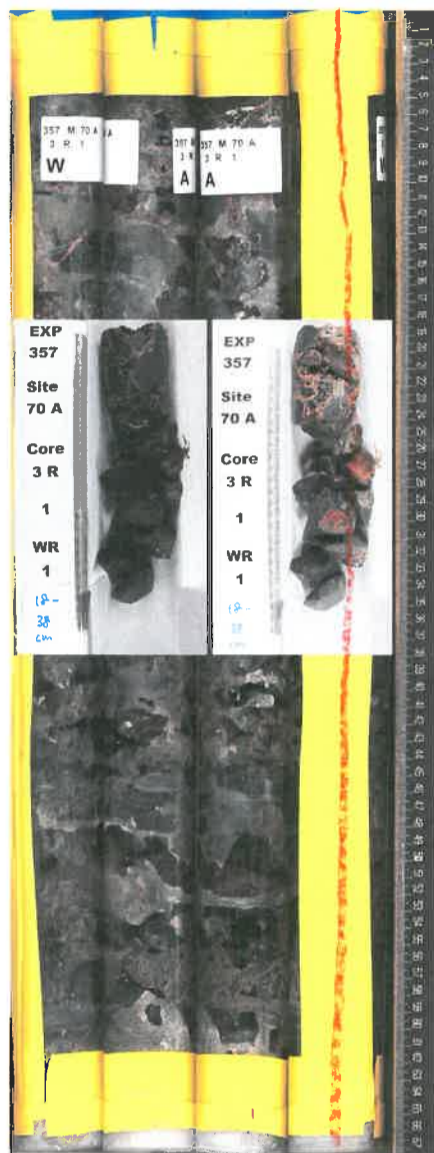


70A 3R



Unit	Lithology	Minerals	Veins	Structure Deformations	Notes
------	-----------	----------	-------	------------------------	-------

1	Basaltic Breccia			no measurement	<ul style="list-style-type: none"> Matrix-supported breccia with bimodal distribution of angular basaltic clasts (0-1.5cm, 3-5cm). oxidation of the carbonate matrix
---	------------------	--	--	----------------	--

2	Fragmented Basalt			no measurement	<p>Vesicular basalt, vesicles to ~3mm</p> <p>Minimal carbonate?</p>
---	-------------------	--	--	----------------	---