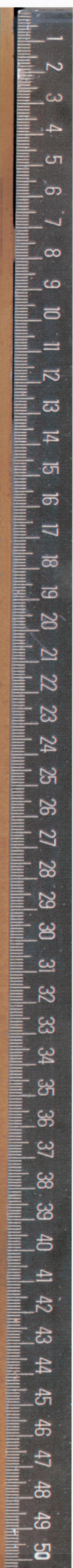
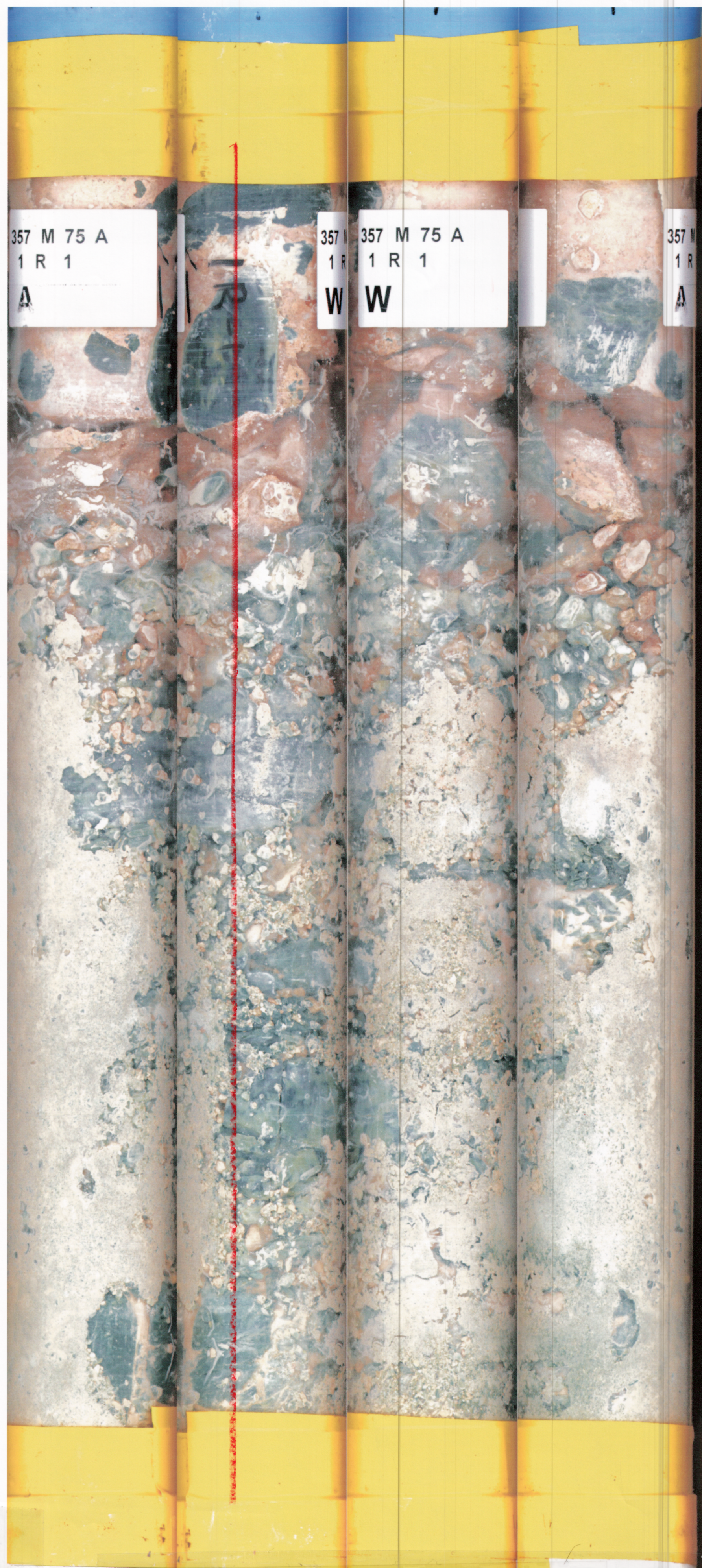


75A 1R

10 CM = 4 CM



UNIT

LITHOLOGY

VEINS

STRUCTURE DEFORMATION

PRIMARY MINERALS
SECONDARY MINERALS

NOTES

1
2
3
4
(1)

serpent.
"chunks"
in carb.
mtr.

talc-
schist
rubble

meta-
gabbro
@ calc-
schist
rubble

serp
@ carb
rubble

None visible

N/A

None

None

SERPENTINE
CARBONATE
TALC
CHLORITE?

TALC
SERP?

Serpentine
Chlorite

In gen., for units 1-4, primary phases not recognizable, serp. segments appear to be intensely chloritized.
Angular fragment un-mixed serpentine in carbonate sed matrix
Probably sedimentary matrix (granular / forams?) around angular clasts

Shear zone?

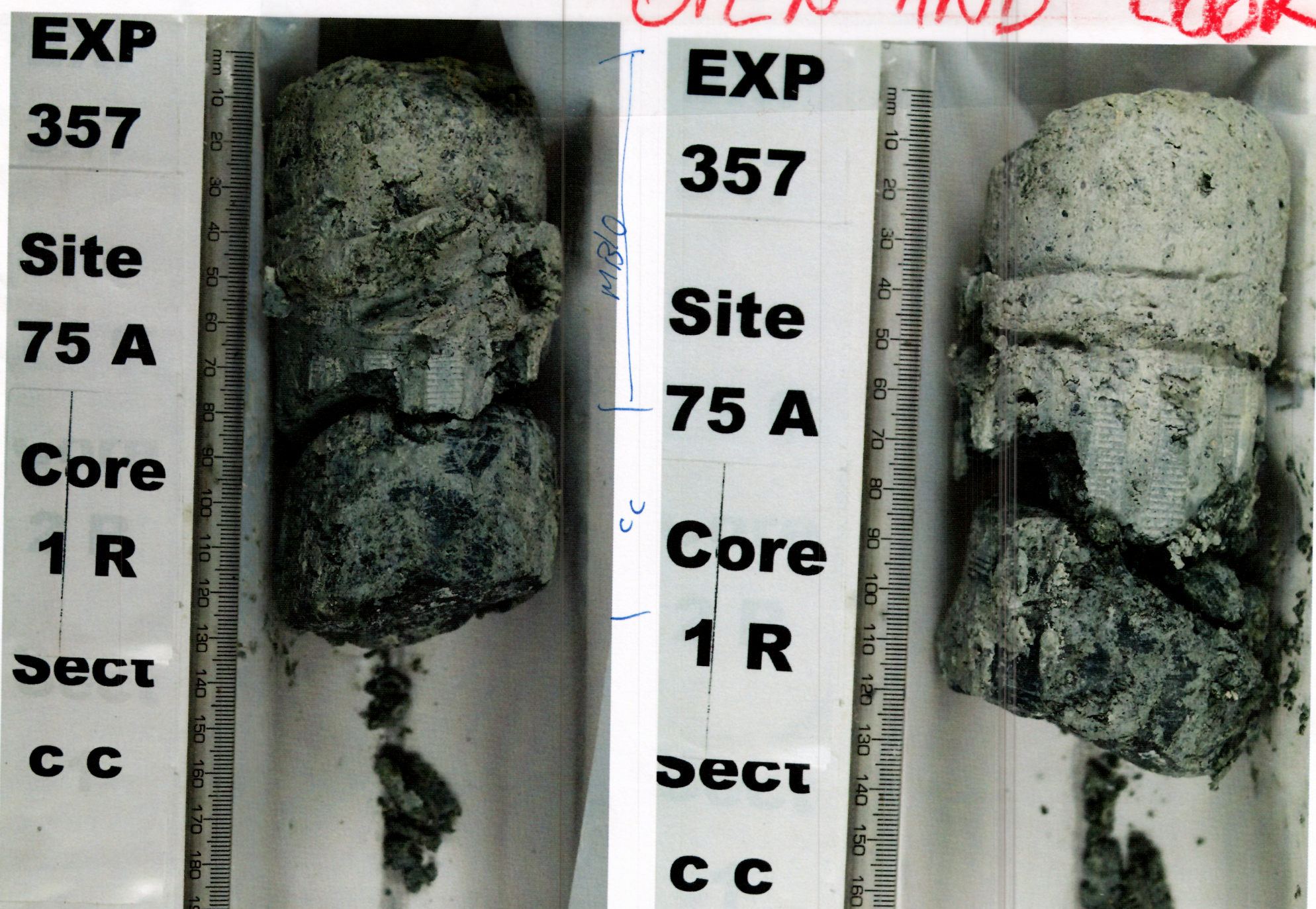
bigger piece of "metagabbro" on top

more fragmented "meta-gabbro" + carbonate and talc-schist rubble
Dark grey colour.

Serp. same as 1 → chloritization
Serp. fragmented
Carbonate / white veins in clasts.

If sedimentary breccia bottom & top → do a single ^{lithological} unit?

OPEN AND LOOK



CC = Not visible