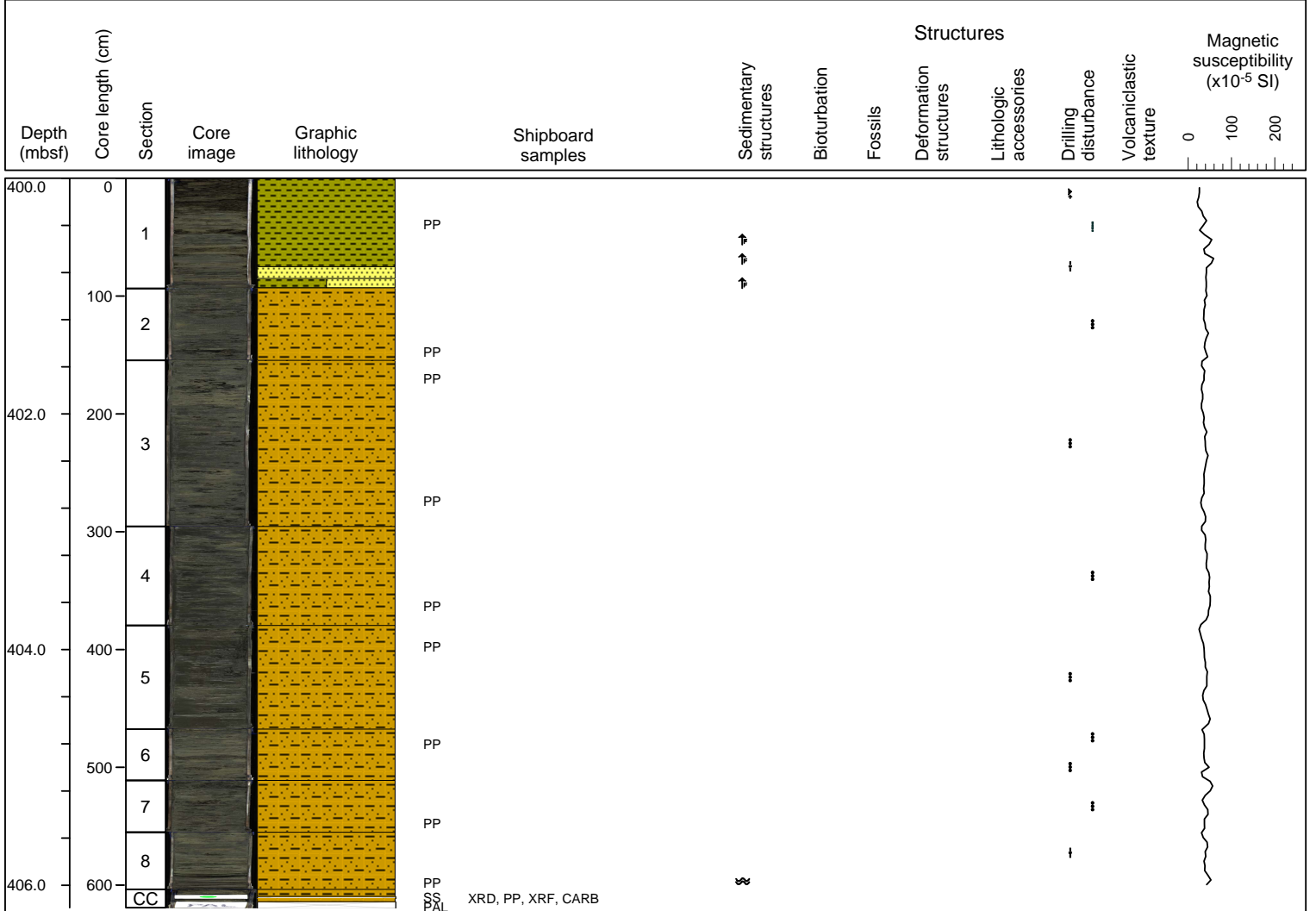


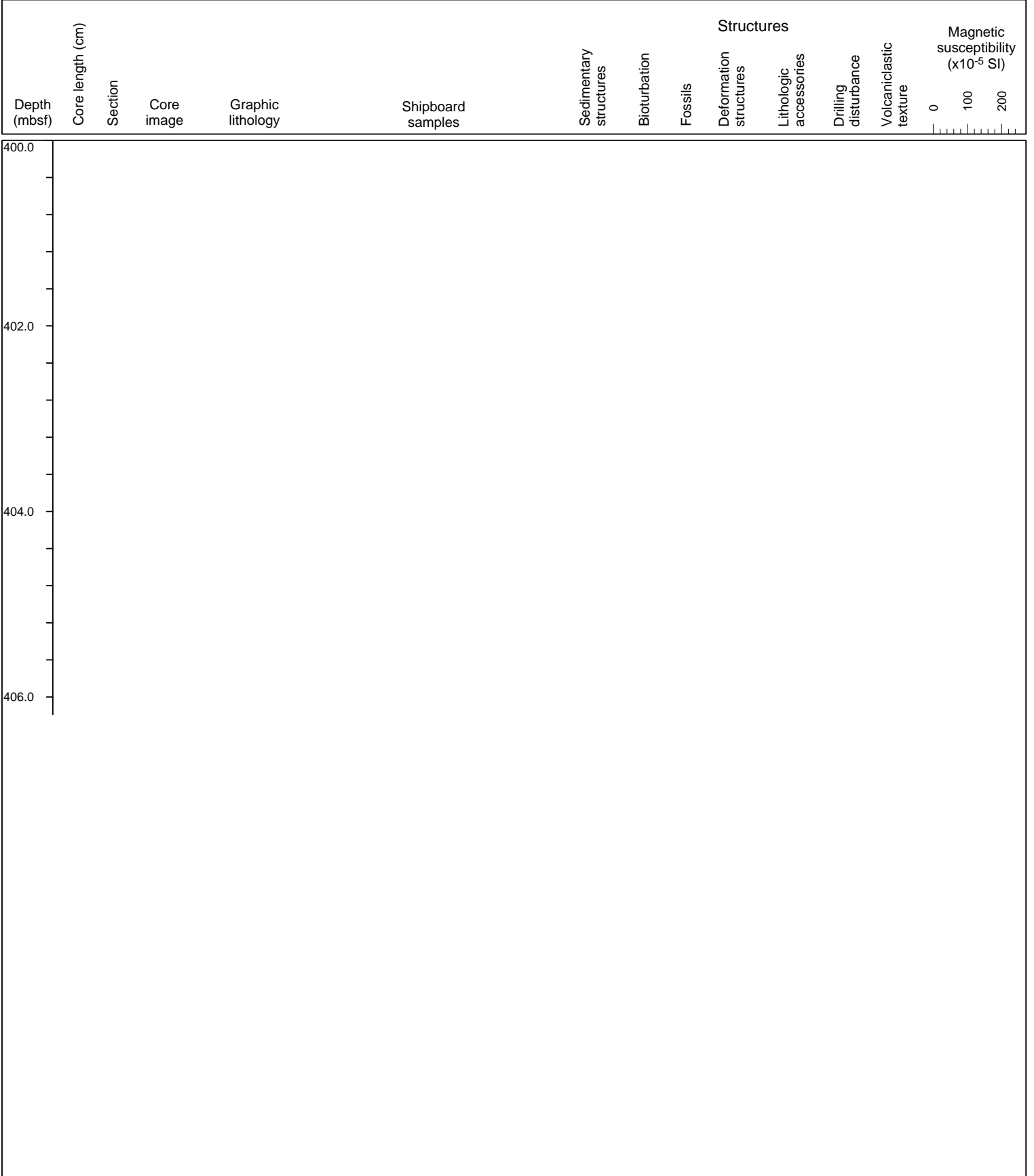
Hole C0025A Core 1R, interval 400-406.19 m (core depth below seafloor)

SANDY MUD TO MUDDY SAND
 gray sandy mud to muddy sand
 Presence of gray silty clay to clayey silt
 Mostly structureless, few very fine to fine sand interbeds, some of which are graded in section 1 of core 1R. Large parts soupy with some clasts floating in matrix (certainly drilling disturbed)



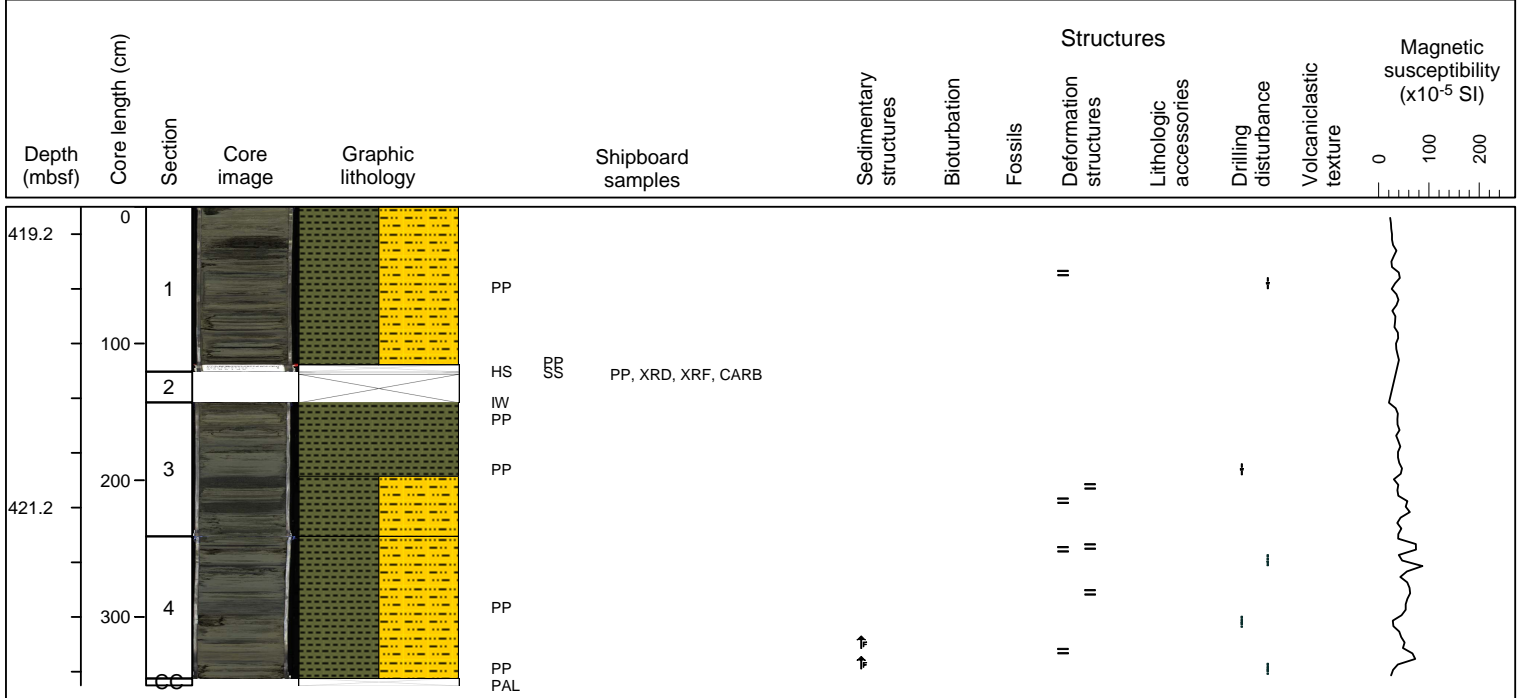
Hole C0025A Core 2R, interval 409.5-419 m (core depth below seafloor)

NO RECOVERY



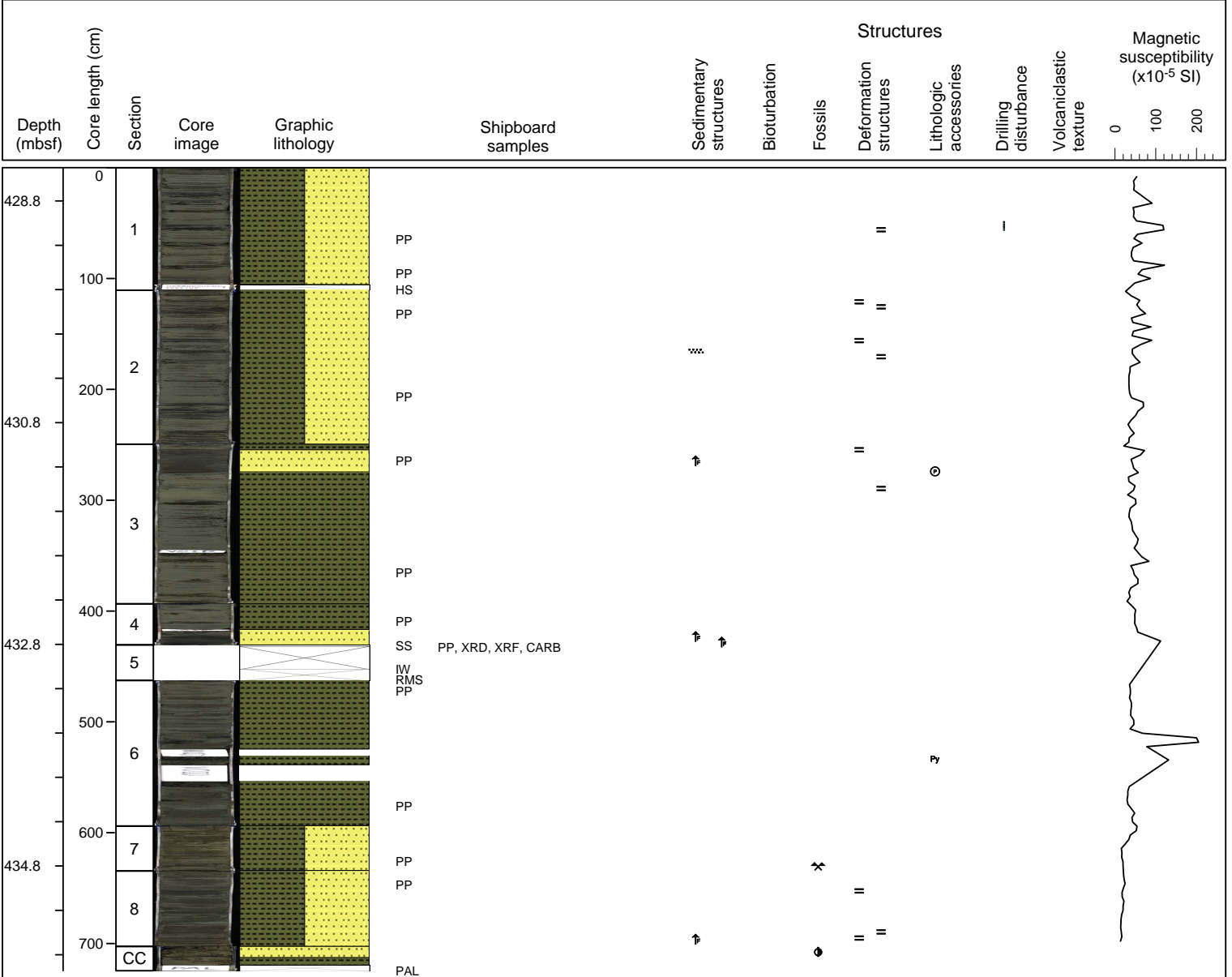
Hole C0025A Core 3R, interval 419-422.5 m (core depth below seafloor)

SILTY CLAYSTONE TO CLAYEY SILTSTONE
 Dark greenish structureless gray silty claystone
 Dark gray silty sandstone to sandy siltstone (as thin interbeds)



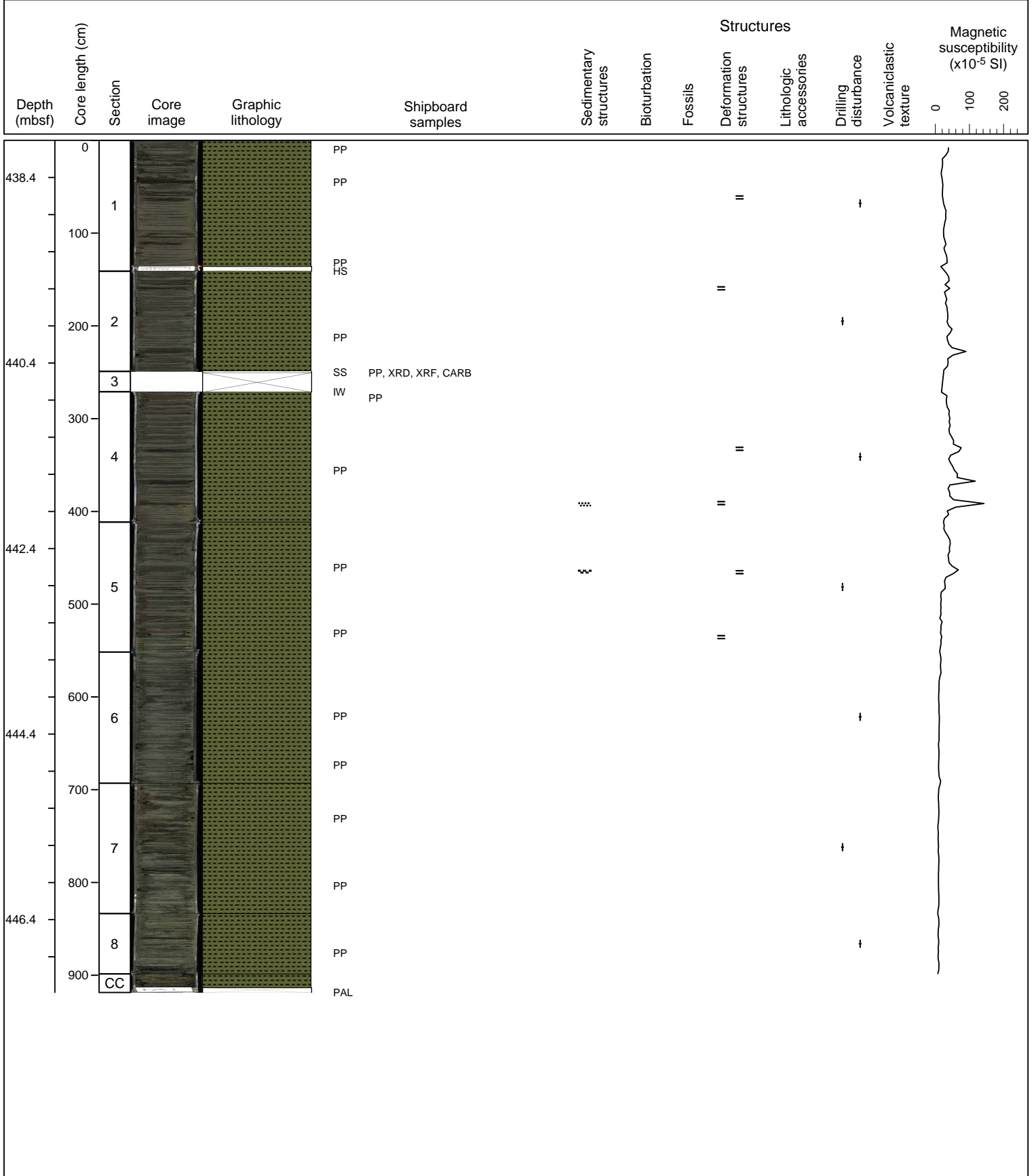
Hole C0025A Core 4R, interval 428.5-435.745 m (core depth below seafloor)

SILTY CLAYSTONE TO CLAYEY SILTSTONE
 Dark gray structureless silty claystone to clayey siltstone with very-thin to thin-bedded interbeds of structureless or graded very-fine to fine-grained sandstone. Scattered foraminifera and sponge spicules



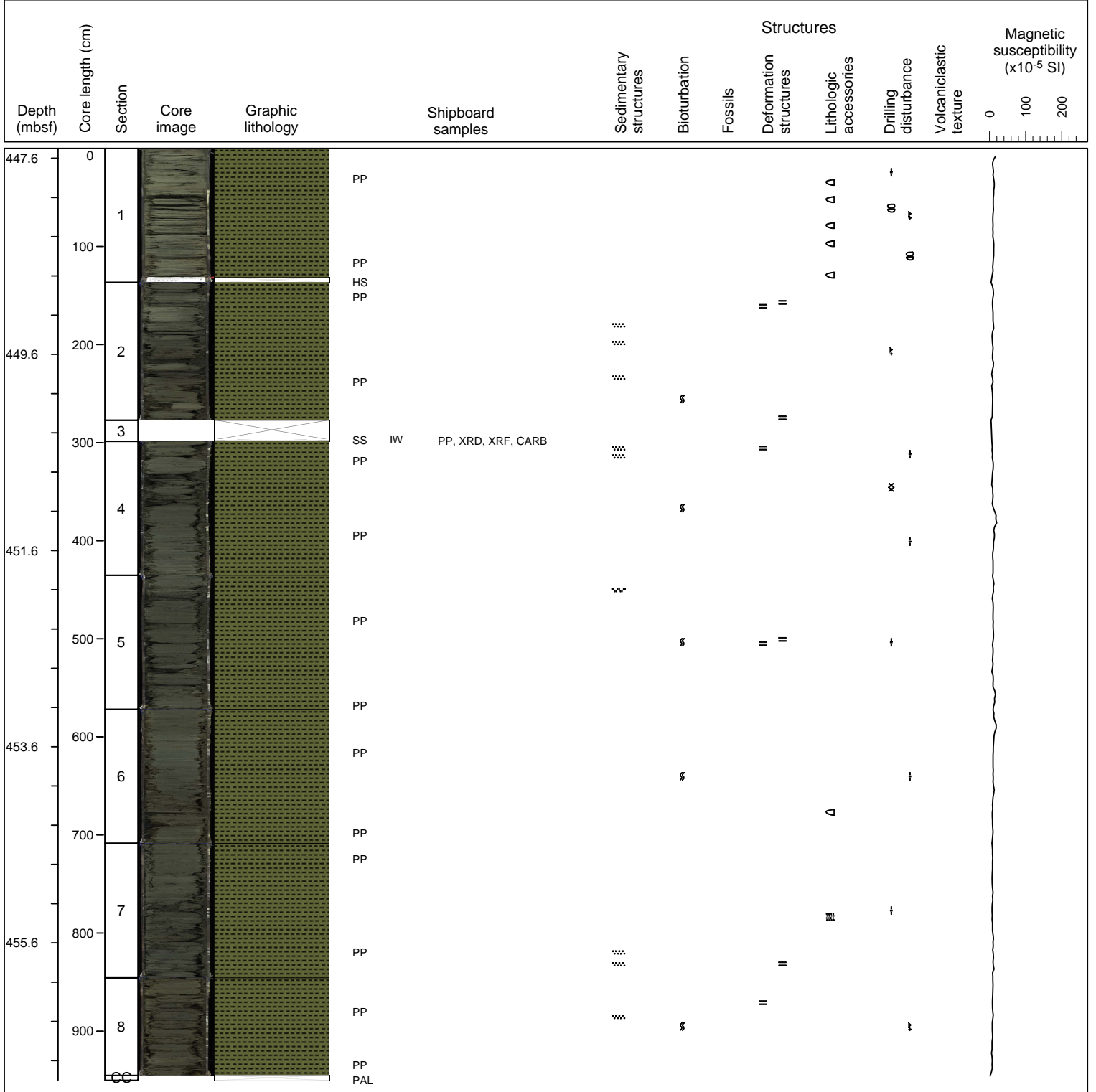
Hole C0025A Core 5R, interval 438-447.185 m (core depth below seafloor)

SILTY CLAYSTONE TO CLAYEY SILTSTONE
 Dark greenish gray structureless silty claystone to clayey siltstone with very-thin interbeds of siltstone and silty sandstone.



Hole C0025A Core 6R, interval 447.5-457 m (core depth below seafloor)

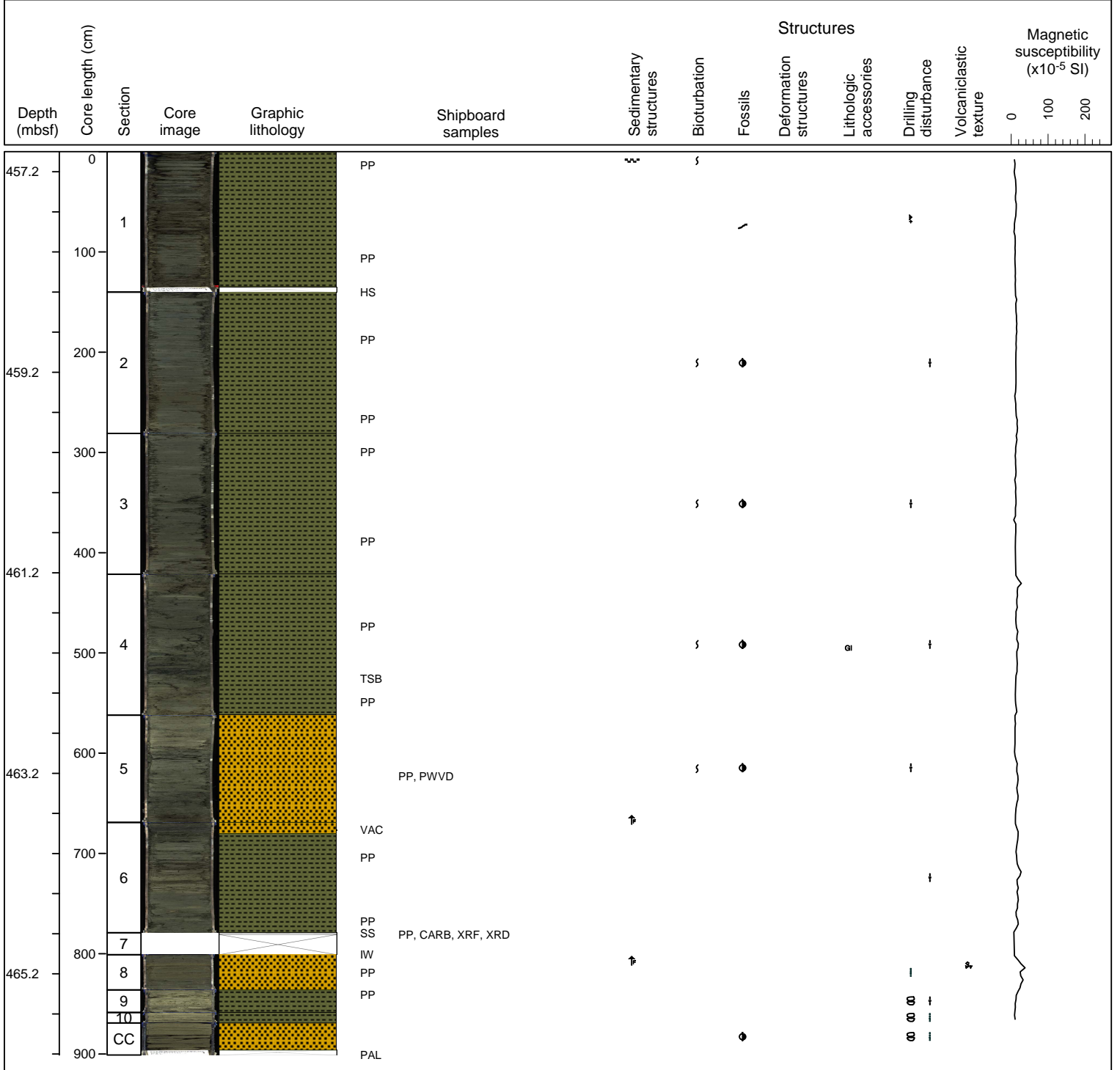
SILTY CLAYSTONE TO CLAYEY SILTSTONE
 Dark greenish gray bioturbated silty claystone with very-thin interbeds of siltstone to very-fine sandstone.
 Slight to moderate drilling disturbance with some biscuiting at the top.



Hole C0025A Core 7R, interval 457-466.01 m (core depth below seafloor)

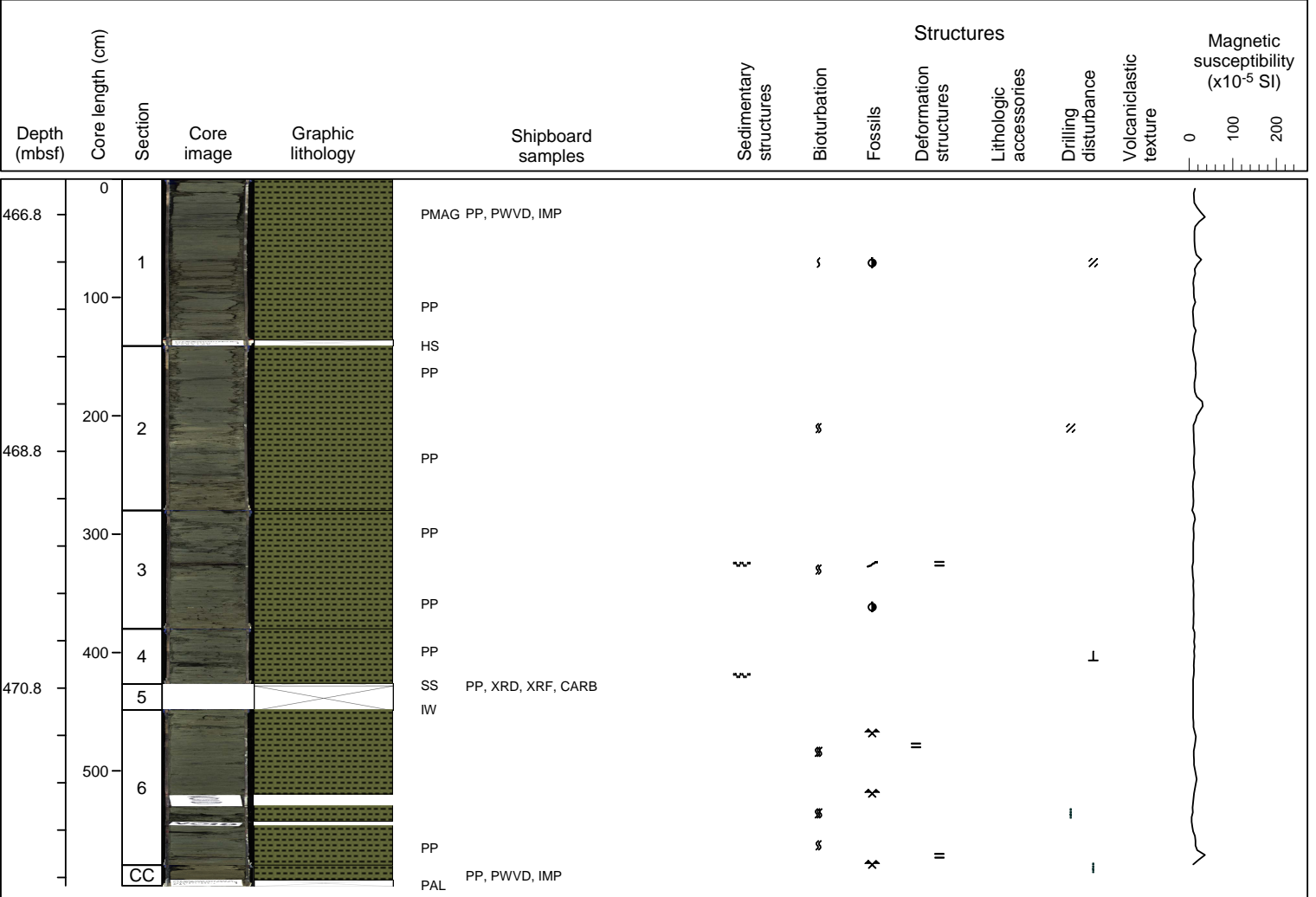
SILTY CLAYSTONE TO CLAYEY SILTSTONE WITH MUDDY SANDSTONE

Olive gray clayey siltstone with beds of muddy sandstone. Ash layer is found at section 8. Distinct clasts of glauconite and pyrite are observed in section 4. Slight bioturbation and scattered microfossils are found throughout.



Hole C0025A Core 8R, interval 466.5-472.47 m (core depth below seafloor)

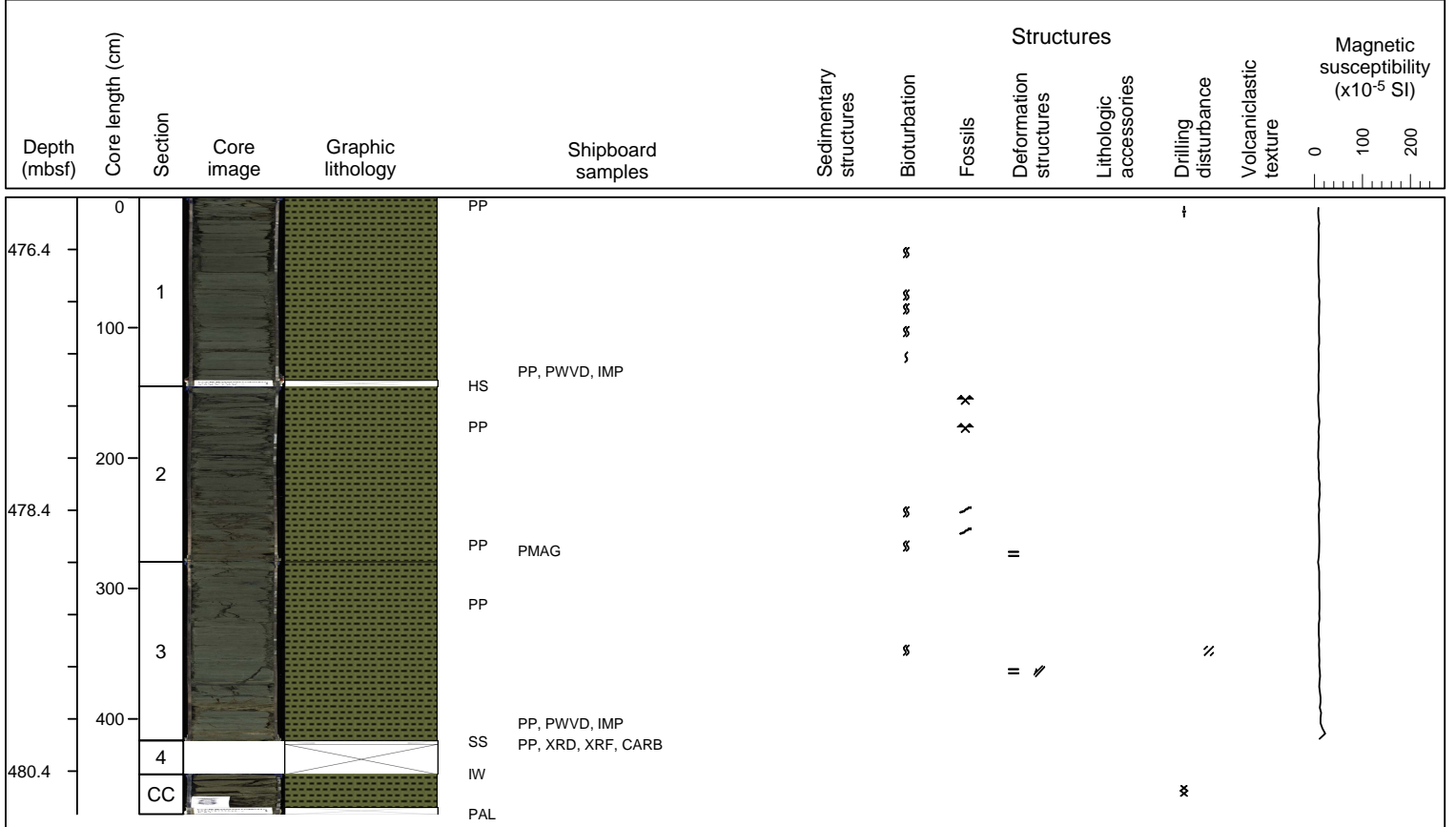
SILTY CLAYSTONE TO CLAYEY SILSTONE
 Greenish gray silty claystone to clayey silstone with bioturbation (some chondrites) and scattered foraminifera and sponge spicule all throughout. Very-thin black silty layers and patches, organic-matter rich, are observed.



Hole C0025A Core 9R, interval 476-480.73 m (core depth below seafloor)

SILTY CLAYSTONE TO CLAYEY SILTSTONE.

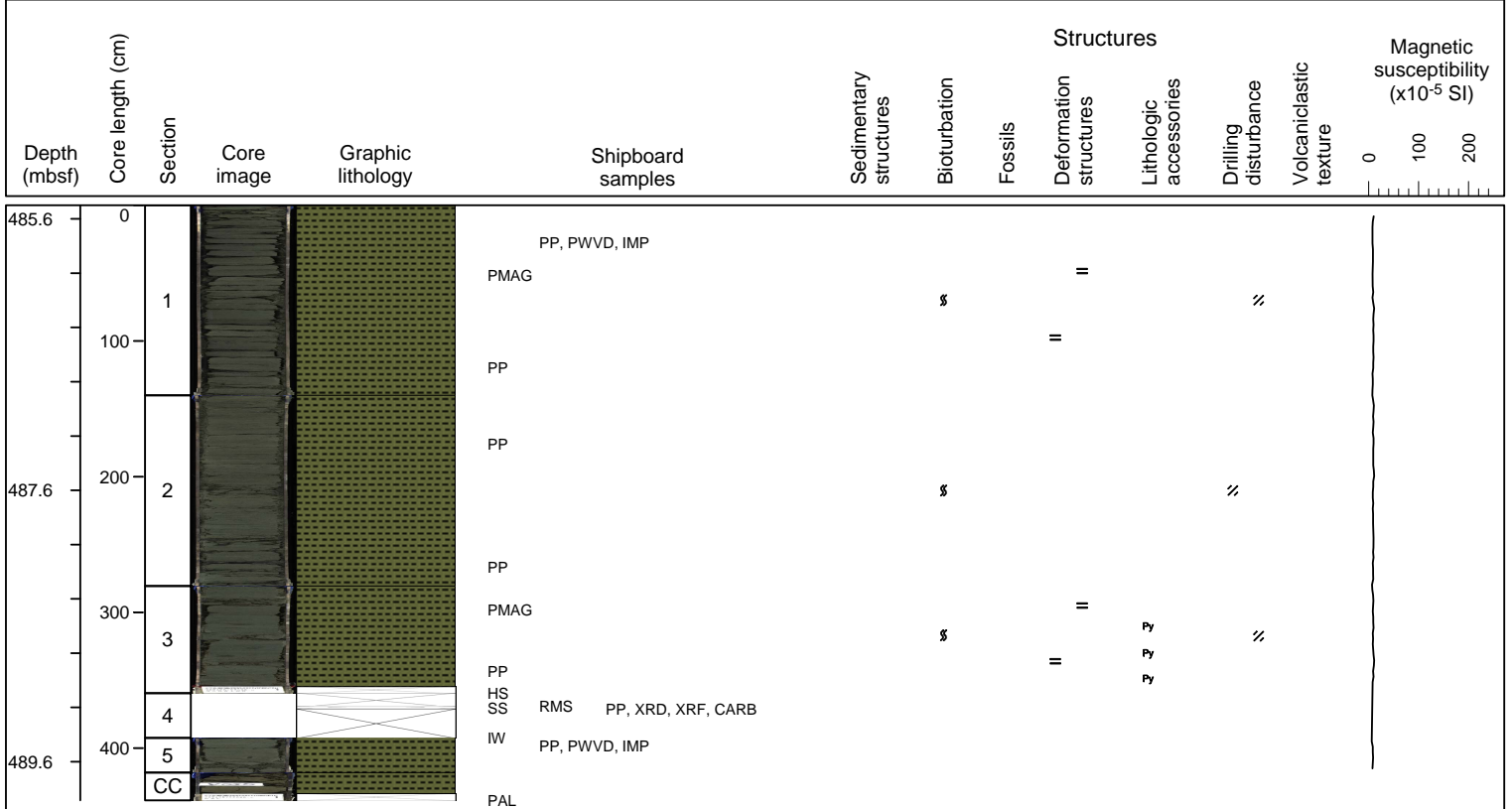
Light grey to greenish gray silty claystone to clayey siltstone with moderate-high bioturbation. Scattered foraminifera and sponge spicules all throughout. Some patches of silstone to fine sandstone, rich in organic matter.



Hole C0025A Core 10R, interval 485.5-489.885 m (core depth below seafloor)

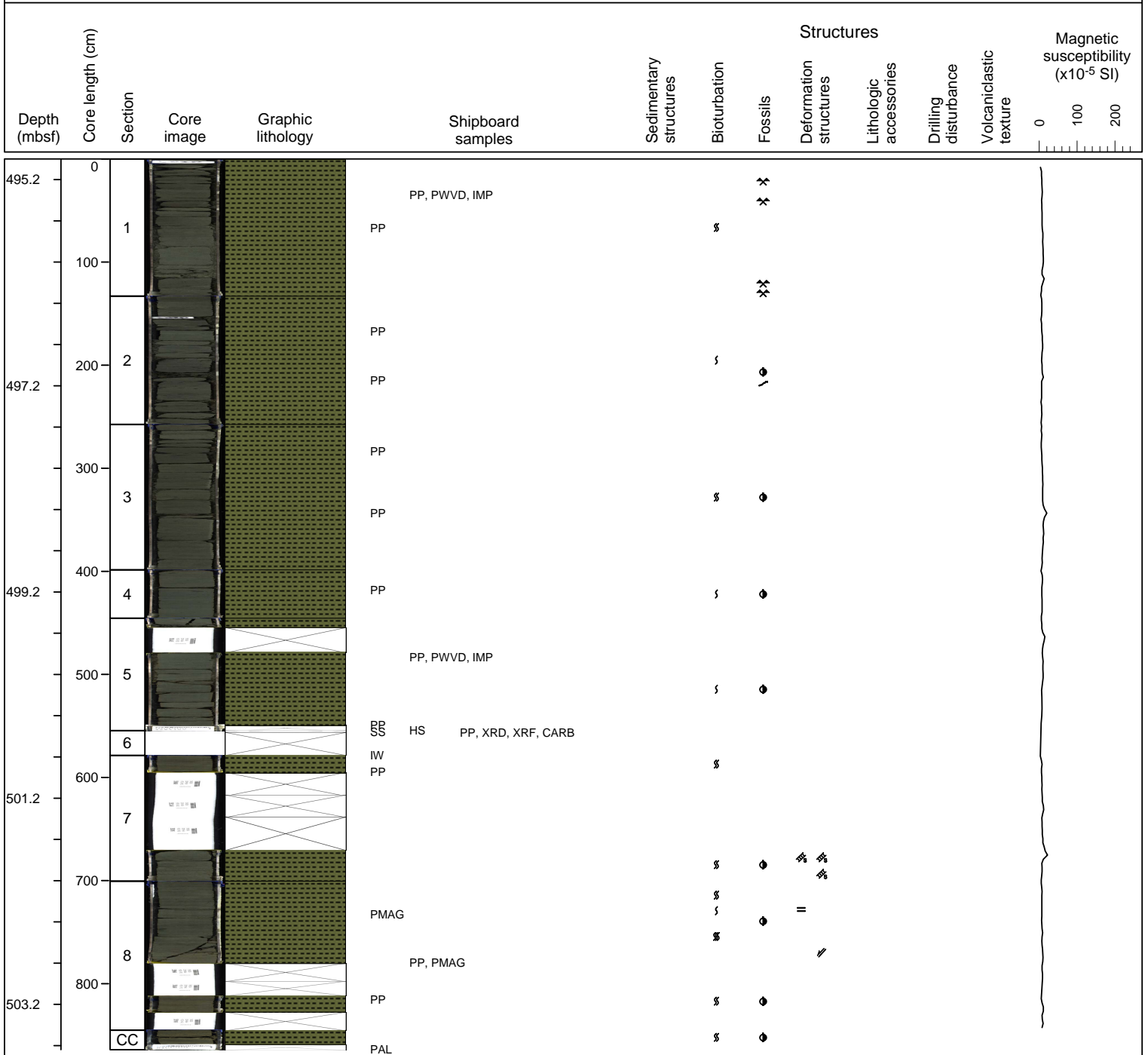
SILTY CLAYSTONE TO CLAYEY SILTSTONE.

Mottled, greenish gray silty claystone to clayey siltstone with widespread bioturbation. Scattered planar laminae and pyrite grains. Highly fractured, induced by drilling.



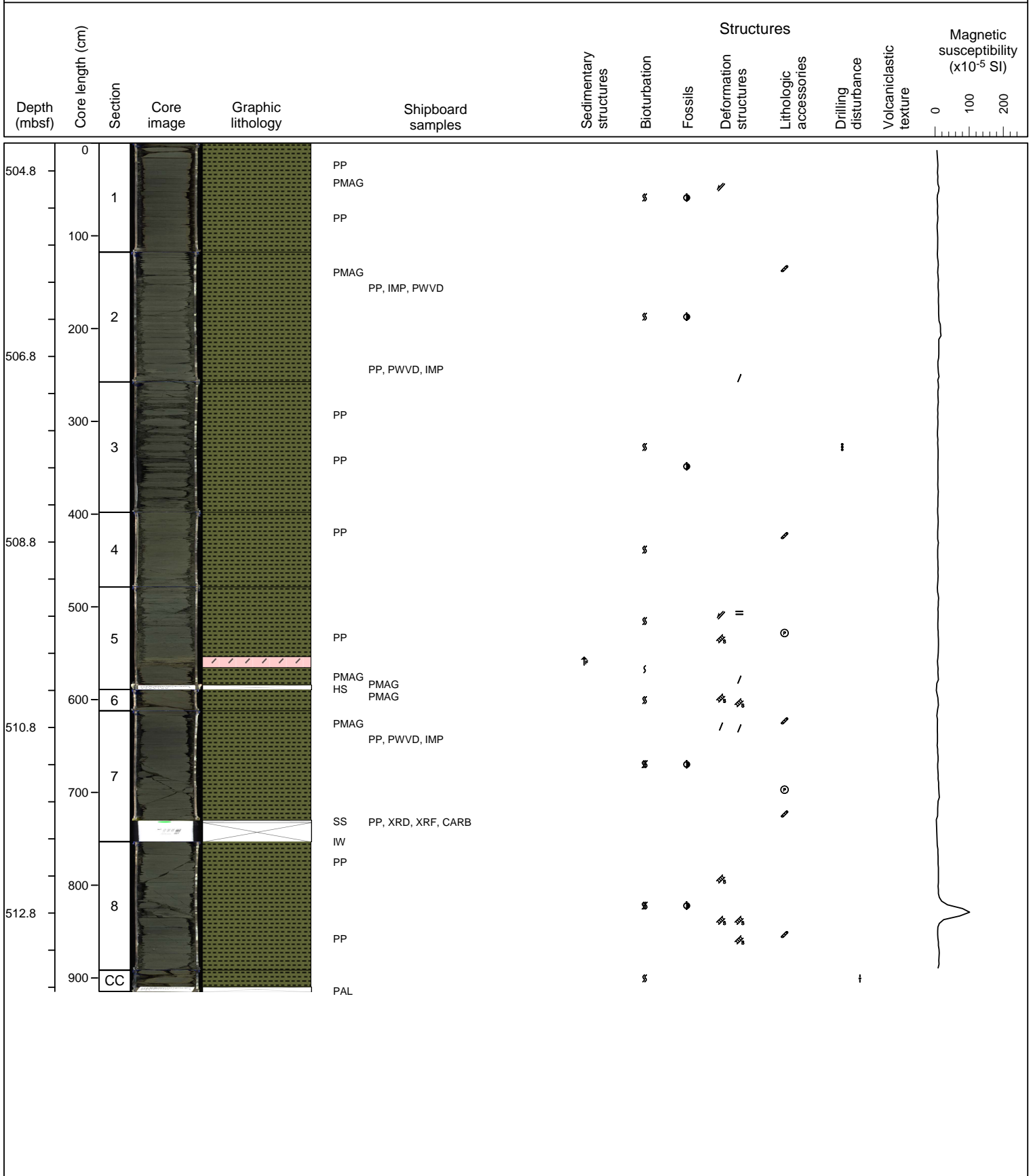
Hole C0025A Core 11R, interval 495-503.64 m (core depth below seafloor)

SILTY CLAYSTONE TO CLAYEY SILSTONE.
 Light gray silty claystone to clayey siltstone, moderately bioturbated, with some intervals of chondrites and zoophycos, and scattered foraminiferas and sponge spicule.



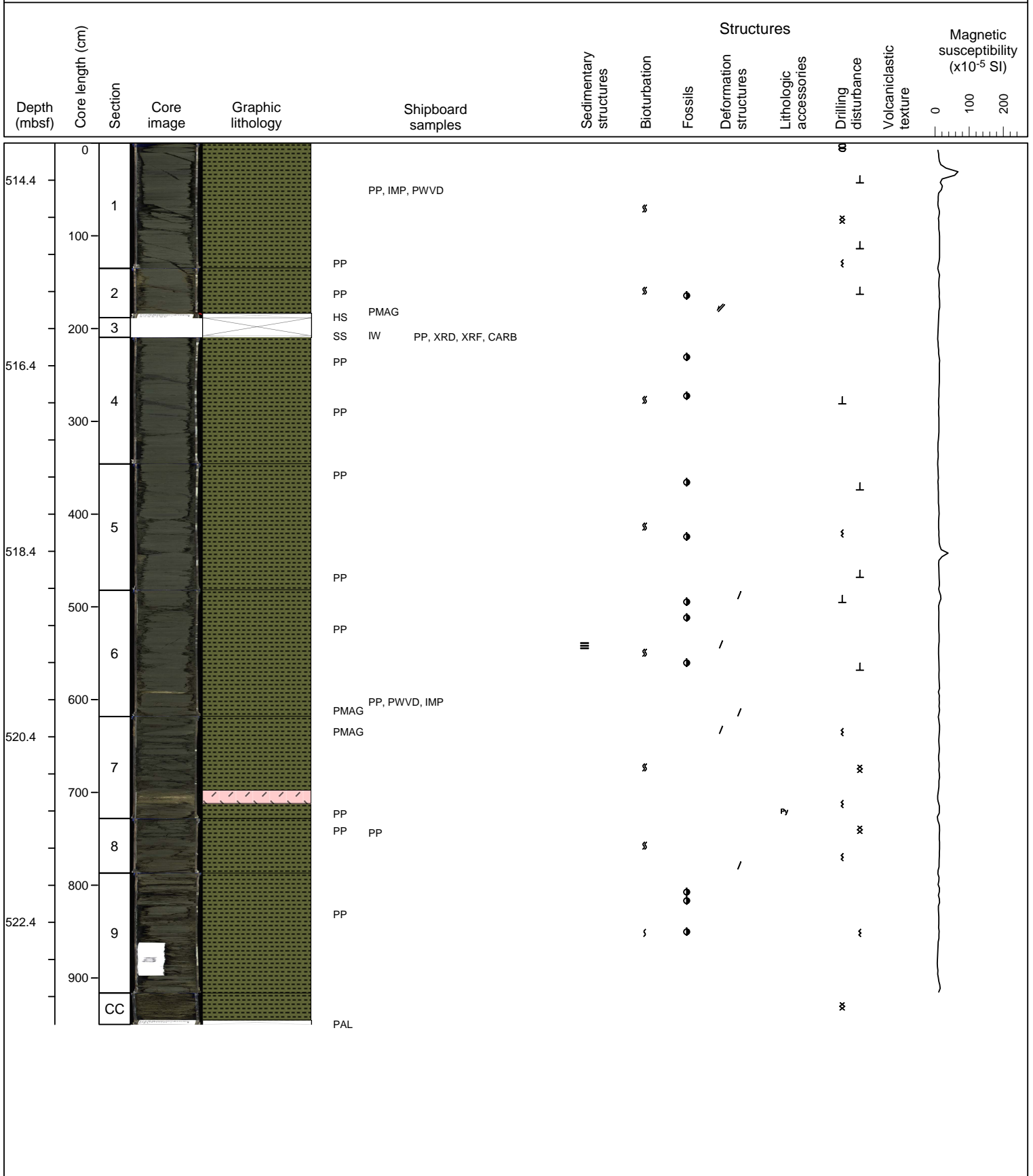
Hole C0025A Core 12R, interval 504.5-513.645 m (core depth below seafloor)

SILTY CLAYSTONE TO CLAYEY SILTSTONE.
 Silty claystone to clayey siltstone with moderate to high bioturbation and scattered foraminifer shells. Graded tuff layer is observed in section 5.



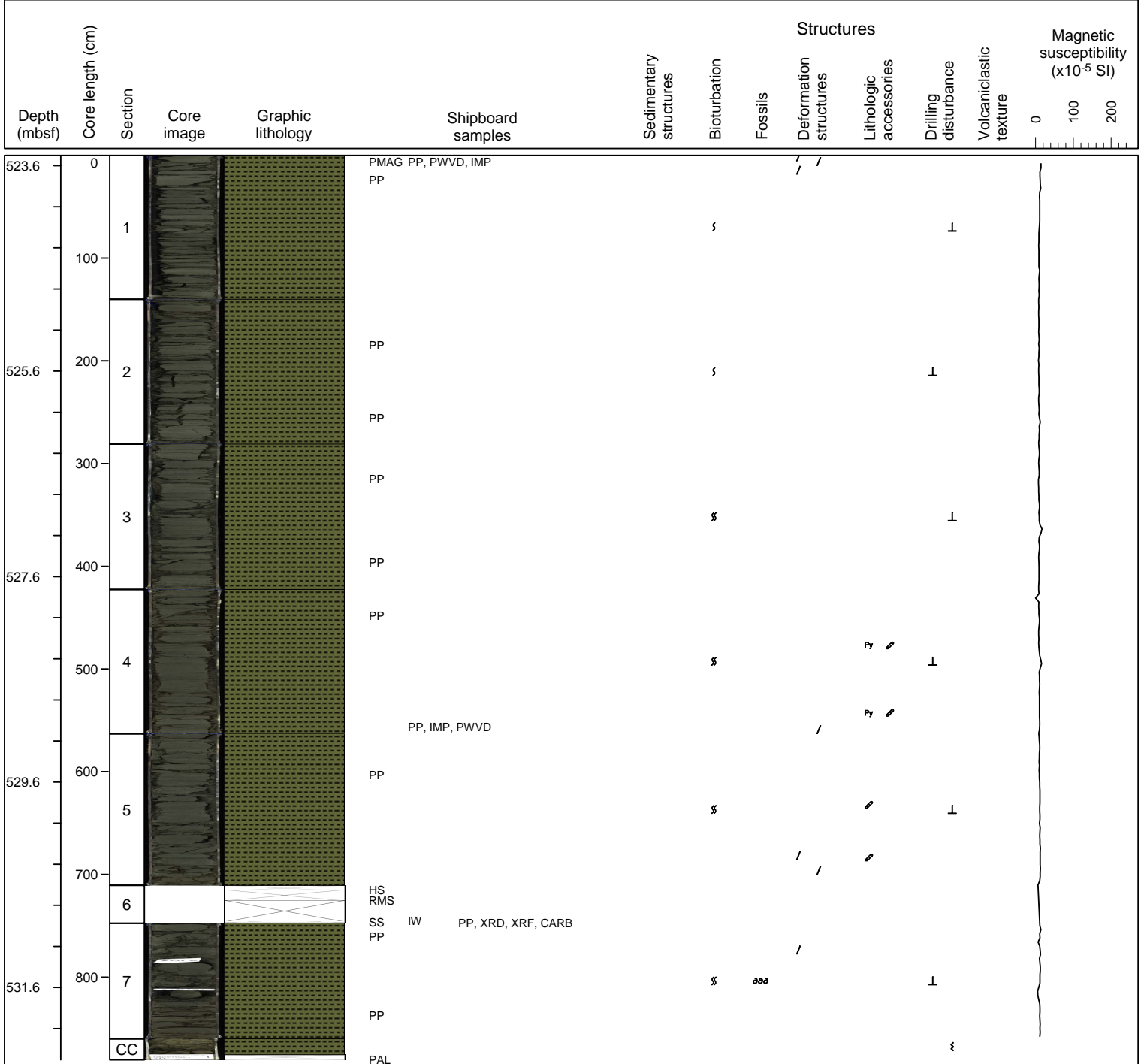
Hole C0025A Core 13R, interval 514-523.5 m (core depth below seafloor)

SILTY CLAYSTONE TO CLAYEY SILTSTONE
 Dark greenish gray silty claystone-clayey siltstone, with moderate to high bioturbation and scattered foraminifer shells. Tuff layers are observed in sections 6 and 7.



Hole C0025A Core 14R, interval 523.5-532.305 m (core depth below seafloor)

SILTY CLAYSTONE TO CLAYEY SILTSTONE
 Gray silty claystone to clayey siltstone with moderate bioturbation by burrowing and scattered microfossils.



Hole C0025A Core 15R, interval 533-541.64 m (core depth below seafloor)

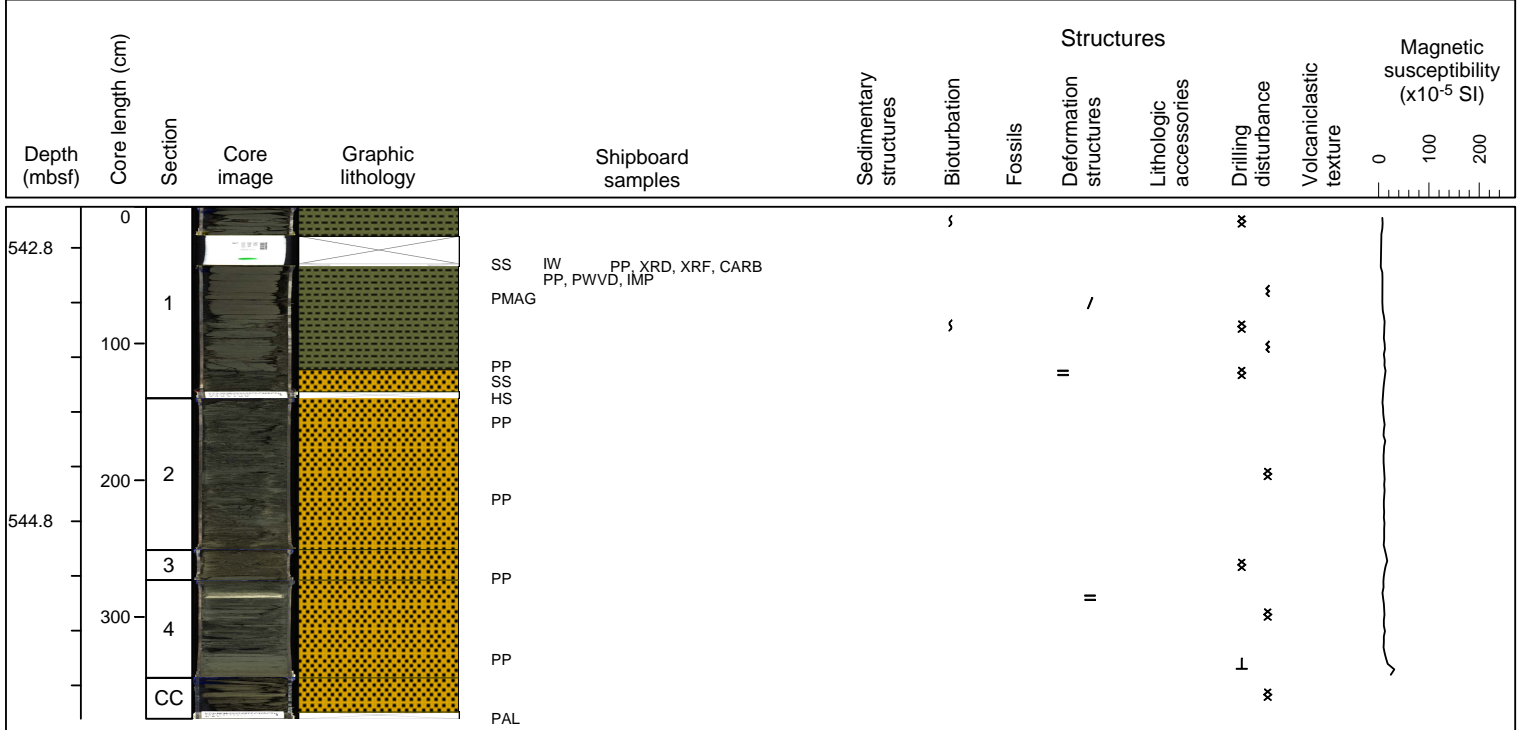
SILTY CLAYSTONE TO CLAYEY SILTSTONE
 Structureless silty claystone to clayey siltstone with moderate to high bioturbation with burrowing and scattered microfossils.

Depth (mbsf)	Core length (cm)	Section	Core image	Graphic lithology	Shipboard samples	Sedimentary structures	Bioturbation	Fossils	Structures			Magnetic susceptibility (x10 ⁻⁵ SI)				
									Deformation structures	Lithologic accessories	Drilling disturbance	Volcaniclastic texture				
533.2	0				PP, PWVD, IMP											
	100	1			PMAG		§		/							
	200				PMAG PP				/				ξ			
535.2		2			PP		§						ξ			
	300				PP											
	400	3			PP		§	◆	4							
537.2					PP											
	500	4			PP, PWVD, IMP			◆					⊥			
	600						§		◆				⊥			
539.2		5			IW SS PP, XRD, XRF, CARB		§	◆					⊥			
	700	6			HS PP		§						⊥			
	800	7			PP		§	◆	◆				⊥			
541.2					PMAG PMAG PAL		§	◆					⊥	×		

Hole C0025A Core 16R, interval 542.5-546.245 m (core depth below seafloor)

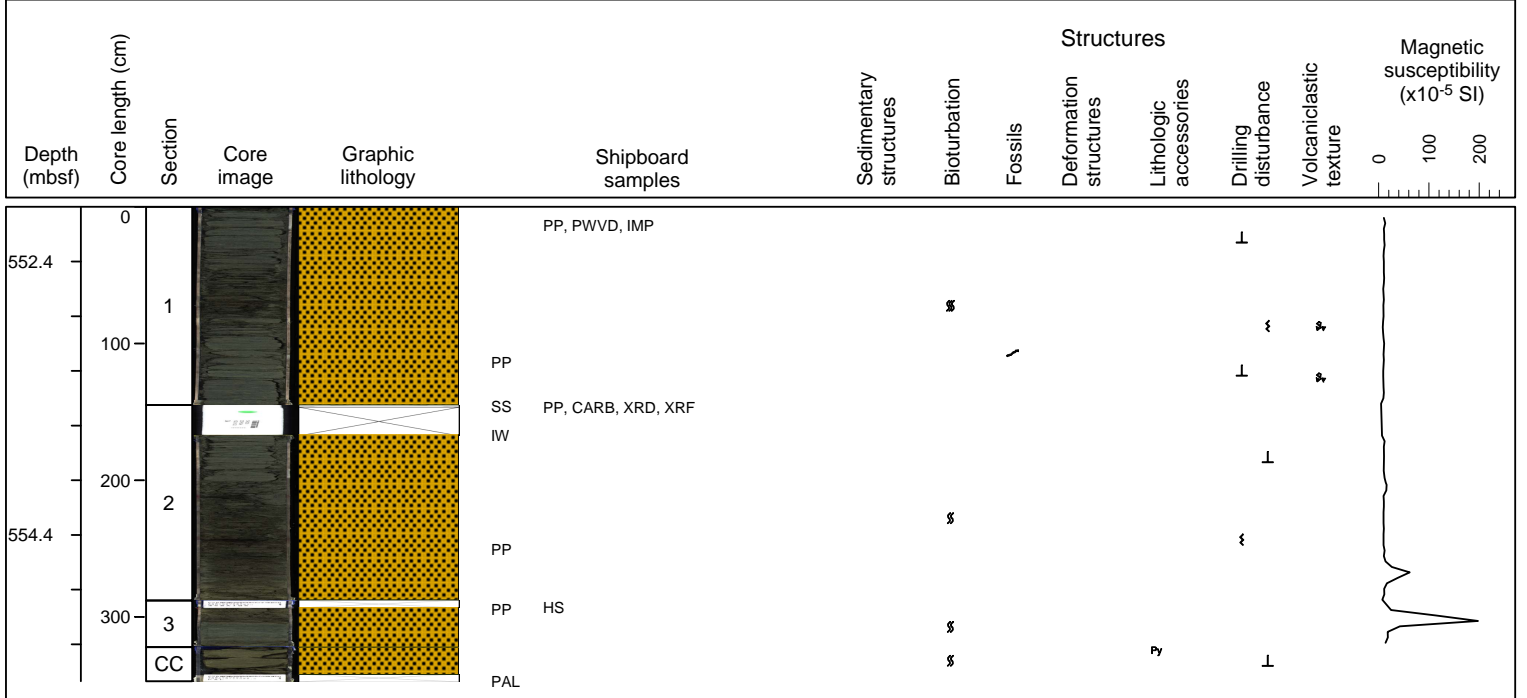
SILTY CLAYSTONE TO CLAYEY SILTSTONE AND MUDDY SANDSTONE

Dark greenish gray silty claystone to claystone transition to muddy sandstone to sandy mudstone. Light gray ash layer is observed at core 4. Heavily fractured by drilling.



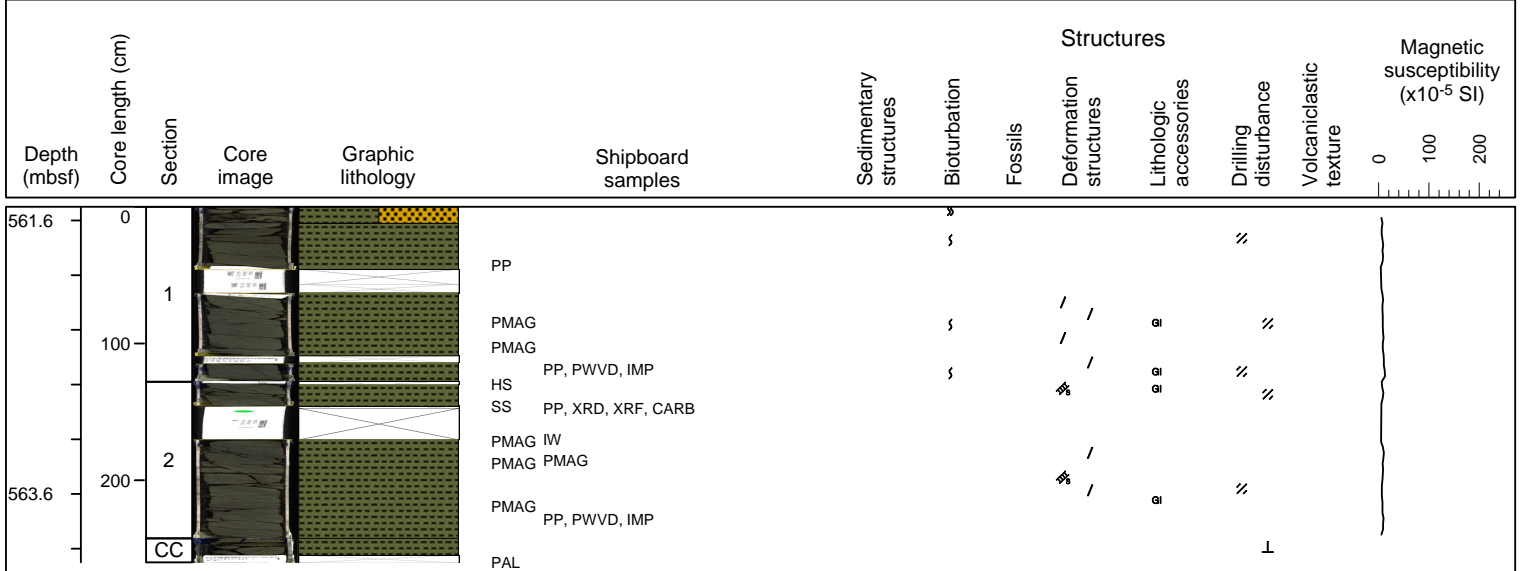
Hole C0025A Core 17R, interval 552-555.47 m (core depth below seafloor)

SANDY MUDSTONE TO MUDDY SANDSTONE
Highly to moderate bioturbated sandy mudstone to muddy sandstone.



Hole C0025A Core 18R, interval 561.5-564.1 m (core depth below seafloor)

SILTY CLAYSTONE TO CLAYEY SILTSTONE
 Dark olive gray silt claystone with scattered clasts of glauconite grains. High angle structures and sediment-filled veins are distributed. Minor lithology is muddy sandstone to sandy mudstone.



Hole C0025A Core 19R, interval 571-574.775 m (core depth below seafloor)

SILTY CLAYSTONE TO CLAYEY SILTSTONE.

Greenish gray to brownish gray silty claystone to clayey siltstone, with black bands, slight to moderate bioturbation, and scattered black specs (glauconite).

Depth (mbsf)	Core length (cm)	Section	Core image	Graphic lithology	Shipboard samples	Sedimentary structures	Bioturbation	Structures				Magnetic susceptibility (x10 ⁻⁵ SI)			
								Fossils	Deformation structures	Lithologic accessories	Drilling disturbance	Volcaniclastic texture	0	100	200
571.2	0	1			PMAG VAC	S	S	Fossils	Deformation structures	Lithologic accessories	Drilling disturbance	Volcaniclastic texture	Magnetic susceptibility scale		
	PP														
	100	2			PP SS PP, XRD, XRF, CARB	S	S	Fossils	Deformation structures	Lithologic accessories	Drilling disturbance	Volcaniclastic texture	Magnetic susceptibility scale		
	IW PMAG														
	200	3			TSB, TSB	S	S	Fossils	Deformation structures	Lithologic accessories	Drilling disturbance	Volcaniclastic texture	Magnetic susceptibility scale		
	PMAG PP, PWVD, IMP														
573.2	300	4			PP	S	S	Fossils	Deformation structures	Lithologic accessories	Drilling disturbance	Volcaniclastic texture	Magnetic susceptibility scale		
	PMAG														
		CC			HS PP, PWVD, IMP										
					PAL										