

# IODP EXP 358 Daily Geomechanics Report

Report #037 20181216

## RTG Team

RTG Supervisor(s)	David Castillo / Thomas Finkbeiner / Demian Saffer
RTG Watch Lead (00:00-12:00)	Emily Wisbey
RTG Watch Lead (12:00-24:00)	Toby Colson

## Well Status

Site Name:	C0002	Hole Name:	Q
Water Depth:	1,939.0 m	RT-MSL:	28.5 m
Current Depth:	No bit in hole mBRT (mTVD)	Section TD:	5,667.5 mBRT (5,664.5) (mTVD)
Section #:	1	CSG Depth/Size:	(4855.0) 11-3/4 mBRT
Static MW:	1.37 sg	Current ECD:	- sg
FIT/LOT/XLOT:	FIT maximum pressure = 1.45 sg		
Current formation/lithology:	Shale		
Sensor Offsets from the Bit:	N/A		
Other BHA Offsets from the Bit	N/A		
Current Operations:	Set 11-3/4" EZSV plug. POOH wireline setting tool and pressure test plug to 3,050psi. Made up anchor, whipstock and 10-5/8' Tri Mill and RIH at controlled speed to ~4,200mBRT.		

## Geomechanics Alert

<b>GREEN</b>	<p><b>Green</b> = Projected model remains accurate</p> <p>White = Unanticipated deviation from model which <i>should not</i> affect drilling</p> <p><b>Yellow</b> = Unanticipated deviation from model which <i>may</i> affect drilling</p> <p><b>Red</b> = Imminent requirement to stop drilling</p>
Basis for Alert Level + Recommendations	<p>No further observations have been made to suggest any change in wellbore condition.</p> <p>1.37 sg remains recommended MW for Section 1.</p>

## Principal Findings

N/A.

# IODP EXP 358 Daily Geomechanics Report

Report #037 20181216

## Observations Summary

*Use this space to discuss any observations while drilling, running casing etc.*

<b>Fracture Gradient</b>	N/A
<b>Pore Pressure</b>	No significant gas peaks or other indications of overpressure observed.
<b>Wellbore Breakout</b>	N/A
<b>Tensile Failure</b>	N/A
<b>Drilling Parameters</b>	N/A
<b>Other</b>	N/A

## Analysis

### Drilling Experience Analysis

N/A

### Cuttings Analysis

N/A

### Cavings Analysis

N/A

### LWD Data Analysis

N/A

### SFIB Analysis

N/A

# IODP EXP 358 Daily Geomechanics Report

## Report #037 20181216

### Geomechanical Model Review

No change in the current stress model.

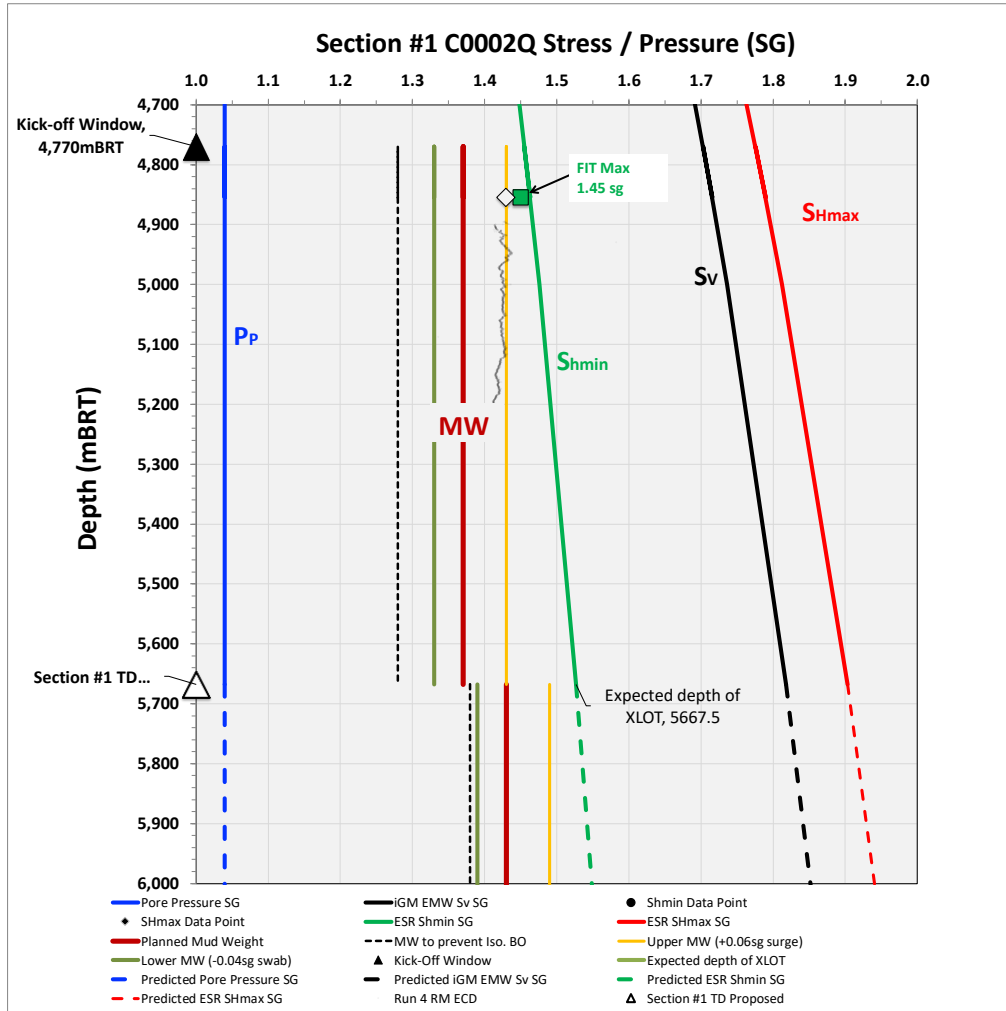


Figure 1 Current stress model for Section #1

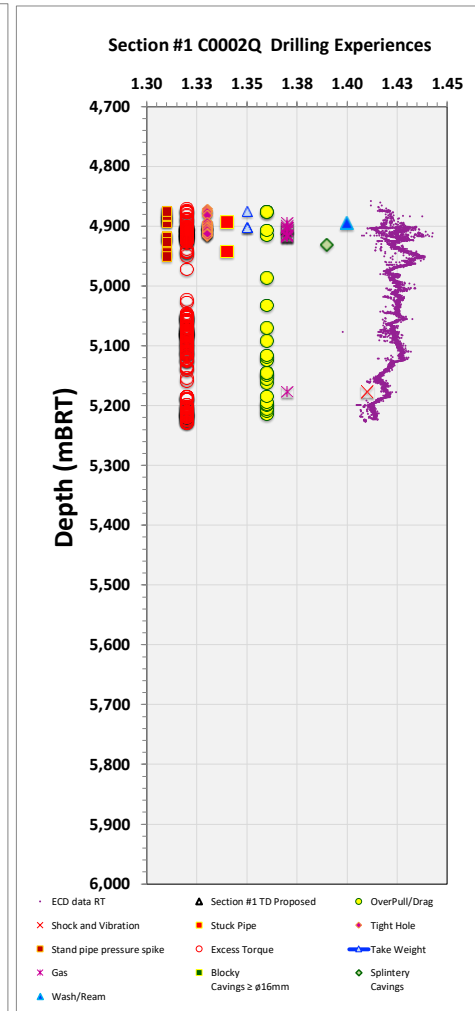


Figure 2 C0002Q Drilling Experiences