

IODP EXP 358 Daily Geomechanics Report

Report #038 20181217

RTG Team

RTG Supervisor(s)	David Castillo / Thomas Finkbeiner / Demian Saffer
RTG Watch Lead (00:00-12:00)	Emily Wisbey
RTG Watch Lead (12:00-24:00)	Toby Colson

Well Status

Site Name:	C0002	Hole Name:	Q
Water Depth:	1,939.0 m	RT-MSL:	28.5 m
Current Depth:	4762 mBRT 4759.7 (mTVD)	Section TD:	5,667.5 mBRT (5,664.5) (mTVD)
Section #:	1	CSG Depth/Size:	4757.0 / 11-3/4" mBRT
Static MW:	1.37 sg	Current ECD:	- sg
FIT/LOT/XLOT:	N/A. Note: C0002Q FIT maximum pressure = 1.45 sg @ 4,855mBRT.		
Current formation/lithology:	Shale		
Sensor Offsets from the Bit:	N/A		
Other BHA Offsets from the Bit	N/A		
Current Operations:	RIH anchor, whipstock and 10-5/8' Tri Mill at controlled speed to ~4,2760mBRT. Tagged EZSV plug 12m shallow at 4,771.5mBRT. Repaired leak in washpipe seals and pressure tested same. Set whipstock and commenced milling window from 4,757mBRT to 4,762mBRT. Decided to POOH and replace 10-5/8" Tri Mill due to decrease in torque. Circulated bottoms up and POOH 10-5/8" Tri Mill to 1,900mBRT at 0600.		

Geomechanics Alert

GREEN	<p>Green = Projected model remains accurate</p> <p>White = Unanticipated deviation from model which <i>should not</i> affect drilling</p> <p>Yellow = Unanticipated deviation from model which <i>may</i> affect drilling</p> <p>Red = Imminent requirement to stop drilling</p>
Basis for Alert Level + Recommendations	No further observations have been made to suggest any change in wellbore condition. 1.37 sg remains recommended MW for Section 1.

Principal Findings

N/A.

IODP EXP 358 Daily Geomechanics Report

Report #038 20181217

Observations Summary

Use this space to discuss any observations while drilling, running casing etc.

Fracture Gradient	N/A
Pore Pressure	No significant gas peaks or other indications of overpressure observed. 0.46% gas peak corresponding to 4,760.5BRT lag depth likely from the mill entering the annulus.
Wellbore Breakout	N/A
Tensile Failure	N/A
Drilling Parameters	N/A
Other	N/A

Analysis

Drilling Experience Analysis

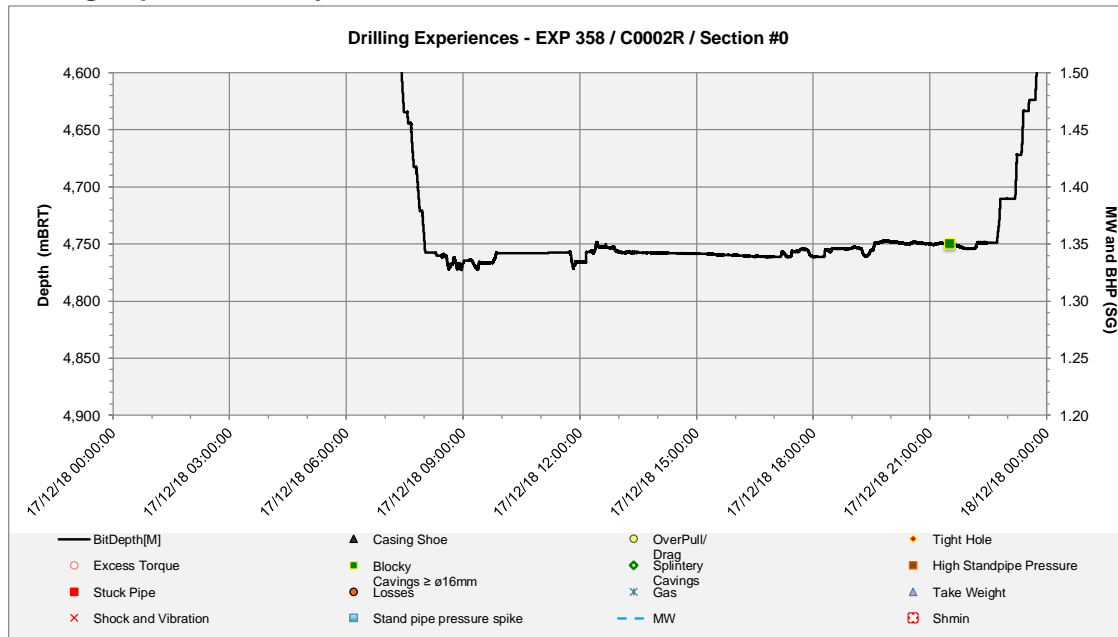


Figure 1 Drilling Experiences over the last 24hrs

Cuttings Analysis

Casing swarf and very little volume of formation cuttings observed over shakers.

Trace cement was also observed at the shakers, much lower than when milling the C2Q window where cement content was 30-50% while milling, and 30-50% decreasing to trace before the kick off BHA total depth.

IODP EXP 358 Daily Geomechanics Report

Report #038 20181217

Cavings Analysis



Figure 2 RTG Sample EXP_358_20181217_2130_4761.47

Few large (up to ~40mm) rounded angular, blocky cavings from the C002P well observed at the shakers at 21:30 on the 17th December (similar to what was seen while milling window for C0002Q sidetrack).

LWD Data Analysis

N/A

SFIB Analysis

N/A

IODP EXP 358 Daily Geomechanics Report

Report #038 20181217

Geomechanical Model Review

No change in the current stress model.

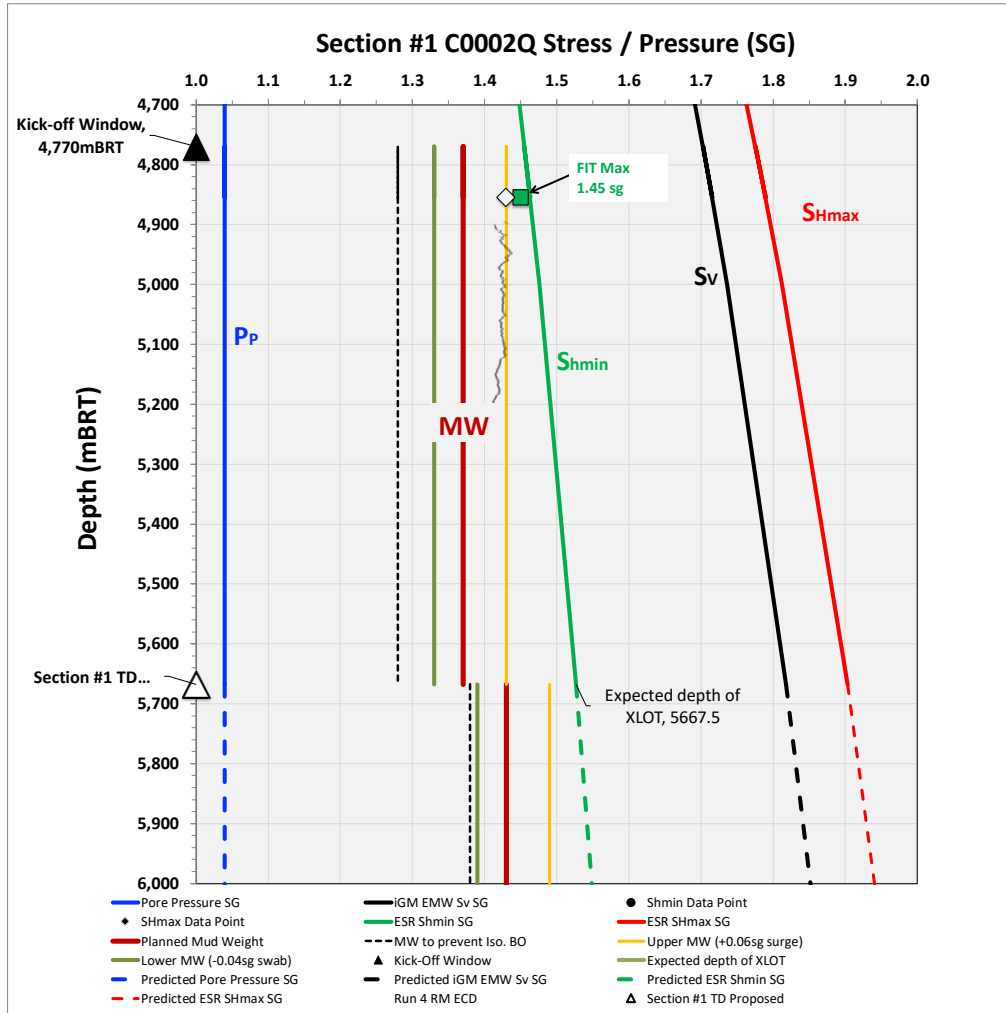


Figure 3 Current stress model for Section #1

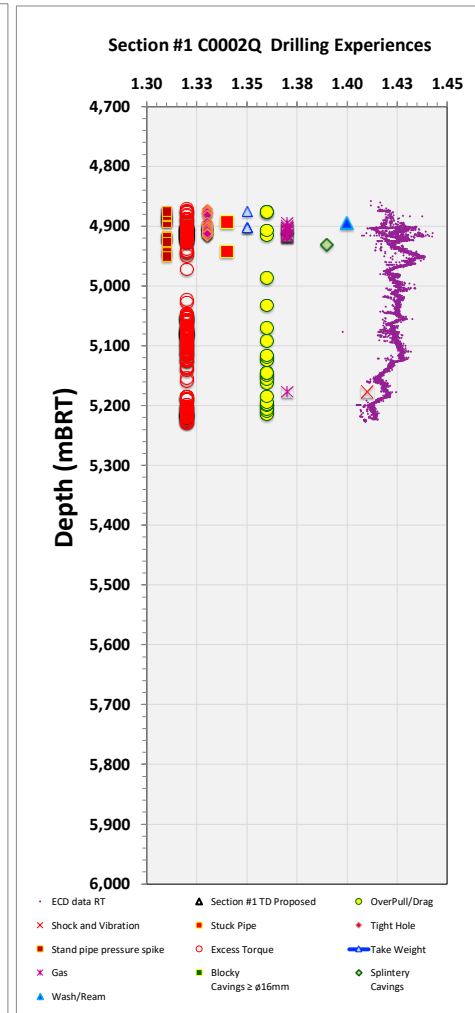


Figure 4 C0002Q Drilling Experiences