

IODP EXP 358 Daily Geomechanics Report

Report #041 20181220

RTG Team

RTG Supervisor(s)	David Castillo / Thomas Finkbeiner / Demian Saffer
RTG Watch Lead (00:00-12:00)	Emily Wisbey
RTG Watch Lead (12:00-24:00)	Toby Colson

Well Status

Site Name:	C0002	Hole Name:	R
Water Depth:	1,939.0 m	RT-MSL:	28.5 m
Current Depth:	4,772 mBRT (4,771) (mTVD)	Section TD:	5,667.5 mBRT (5,664.5) (mTVD)
Section #:	0	CSG Depth/Size:	4757.0 mBRT 11-3/4 inches
Static MW:	1.37 sg	Current ECD:	- sg
FIT/LOT/XLOT:	1.46sg FIT @ 4,757mBRT.		
Current formation/lithology:	Shale		
Sensor Offsets from the Bit:	N/A		
Other BHA Offsets from the Bit	N/A		
Current Operations:	POOH with 10-1/2" Tri Mill and lay out BHA. Made up 10 5/8" window mill assembly and commence RIH to ~4,000mBRT.		

Geomechanics Alert

GREEN	<p>Green = Projected model remains accurate White = Unanticipated deviation from model which <i>should not</i> affect drilling Yellow = Unanticipated deviation from model which <i>may</i> affect drilling Red = Imminent requirement to stop drilling</p>
Basis for Alert Level + Recommendations	1.37 sg remains recommended MW for Section 1.

Principal Findings

N/A

IODP EXP 358 Daily Geomechanics Report

Report #041 20181220

Observations Summary

Use this space to discuss any observations while drilling, running casing etc.

Fracture Gradient	N/A
Pore Pressure	No significant gas peaks or other indications of overpressure observed.
Wellbore Breakout	N/A
Tensile Failure	N/A
Drilling Parameters	N/A
Other	N/A

Analysis

Drilling Experience Analysis

N/A

Cuttings Analysis

N/A

Cavings Analysis

N/A

LWD Data Analysis

N/A

SFIB Analysis

N/A

IODP EXP 358 Daily Geomechanics Report

Report #041 20181220

Geomechanical Model Review

No change in the current stress model.

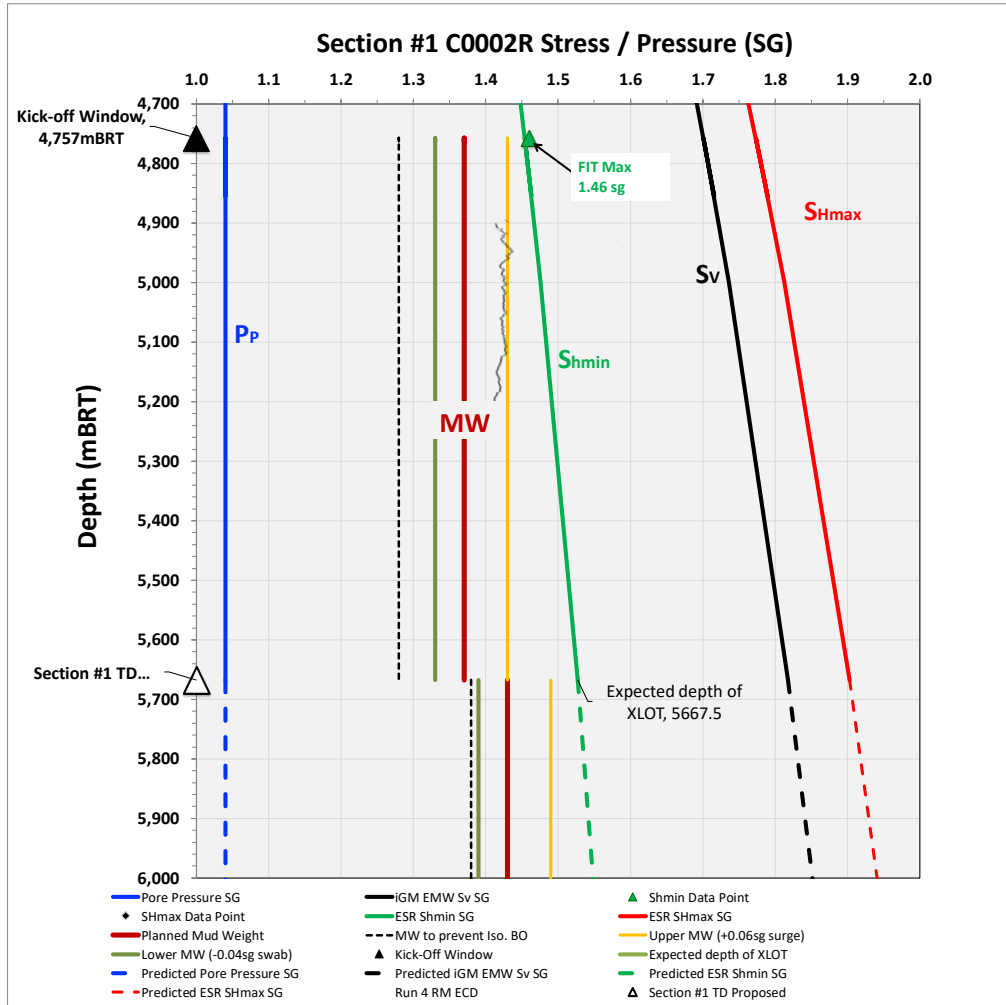


Figure 1 Current stress model for Section #1

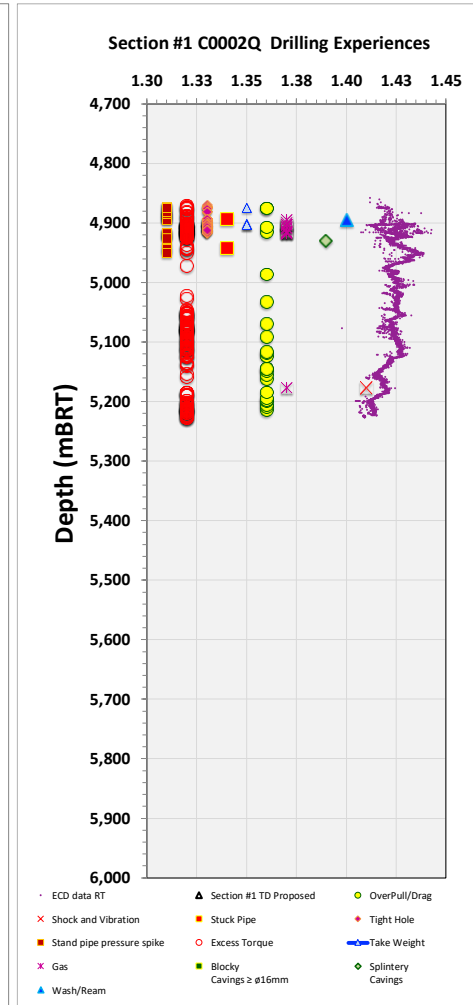


Figure 2 C0002Q Drilling Experiences