

# IODP EXP 358 Daily Geomechanics Report

Report #043 20181222

## RTG Team

RTG Supervisor(s)	David Castillo / Thomas Finkbeiner / Demian Saffer
RTG Watch Lead (00:00-12:00)	Kan Aoike
RTG Watch Lead (12:00-24:00)	Toby Colson

## Well Status

Site Name:	C0002	Hole Name:	R
Water Depth:	1,939.0 m	RT-MSL:	28.5 m
Current Depth:	4,772 mBRT (4,771) (mTVD)	Section TD:	5,667.5 mBRT (5,664.5) (mTVD)
Section #:	0	CSG Depth/Size:	4757.0 mBRT 11-3/4 inches
Static MW:	1.37 sg	Current ECD:	- sg
FIT/LOT/ XLOT:	1.46sg FIT @ 4,757mBRT.		
Current formation/ lithology:	Shale		
Sensor Offsets from the Bit:	TeleScope 675: (Direction + Inclination: 18.37 m)		
Other BHA Offsets from the Bit:	8-1/2" Insert Rock Bit: 0~0.25 m 8.125" Stabilizer: 8.47~10.13 m 2 x 6-3/4" Non-Magnetic Drill Collar + TeleScope 675: 10.91~32.58 m 9 x 6-3/4" Drill Collar: 32.58~117.17 m 6-1/2" Hydraulic Jar: 117.17~127.10 m 2 x 6-3/4" Drill Collar: 127.10~145.76 m 12 x 5.68" Heavy Weight Drill Pipe: 146.56~257.51 m Top of BHA: 258.51 m		
Current Operations:	POOH with 10 5/8" window mill assembly. Laid out assembly and made up 8 1/2" Kick off BHA. Commenced RIH. 2542.5 mBRT (bit depth) as of 06:00 Dec.23.		

## Geomechanics Alert

<b>GREEN</b>	<b>Green</b> = Projected model remains accurate White = Unanticipated deviation from model which <i>should not</i> affect drilling Yellow = Unanticipated deviation from model which <i>may</i> affect drilling Red = Imminent requirement to stop drilling
<b>Basis for Alert Level + Recommendations</b>	No further observations have been made to suggest any change in wellbore condition 1.37 sg remains recommended MW for Section 1.

## Principal Findings

N/A

# IODP EXP 358 Daily Geomechanics Report

Report #043 20181222

## Observations Summary

*Use this space to discuss any observations while drilling, running casing etc.*

<b>Fracture Gradient</b>	N/A
<b>Pore Pressure</b>	No significant gas peaks or other indications of overpressure observed.
<b>Wellbore Breakout</b>	N/A
<b>Tensile Failure</b>	N/A
<b>Drilling Parameters</b>	N/A
<b>Other</b>	N/A

## Analysis

### Drilling Experience Analysis

N/A

### Cuttings Analysis

N/A

### Cavings Analysis

N/A

### LWD Data Analysis

N/A

### SFIB Analysis

N/A

# IODP EXP 358 Daily Geomechanics Report

## Report #043 20181222

### Geomechanical Model Review

No change in the current stress model.

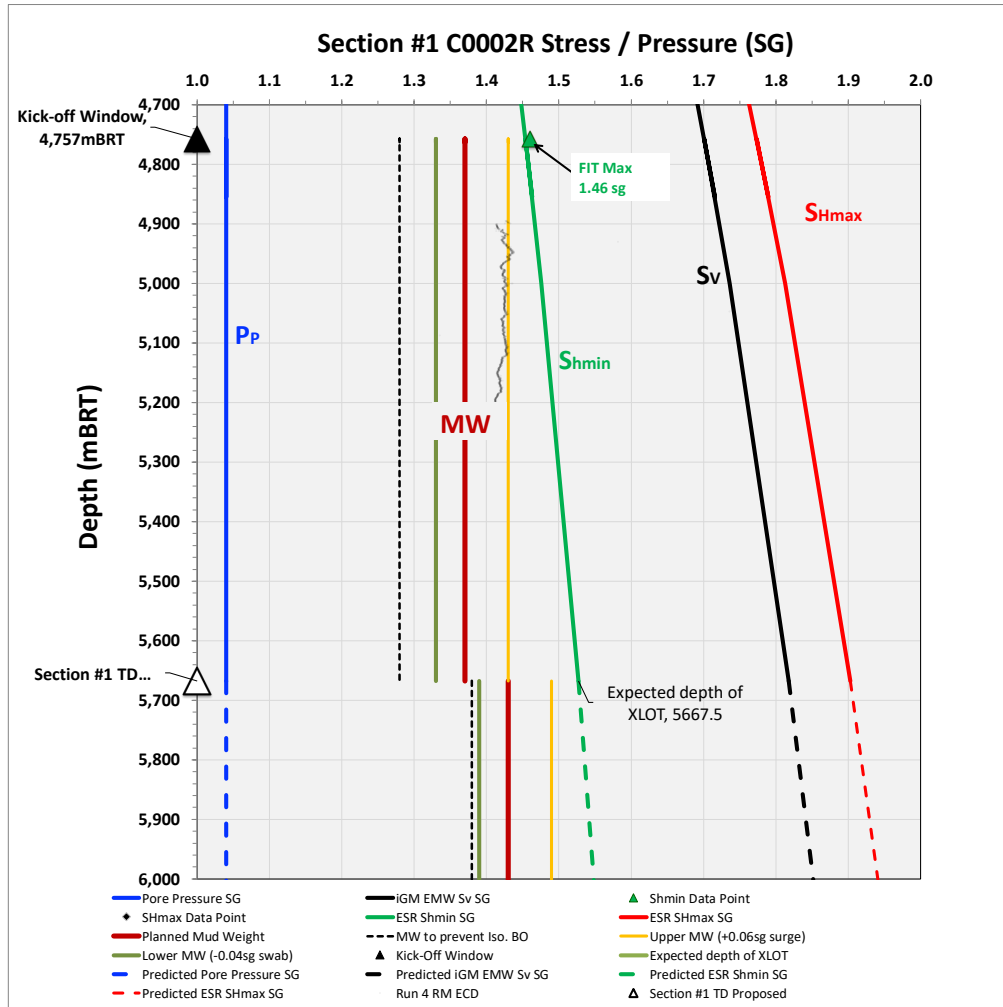


Figure 1 Current stress model for Section #1

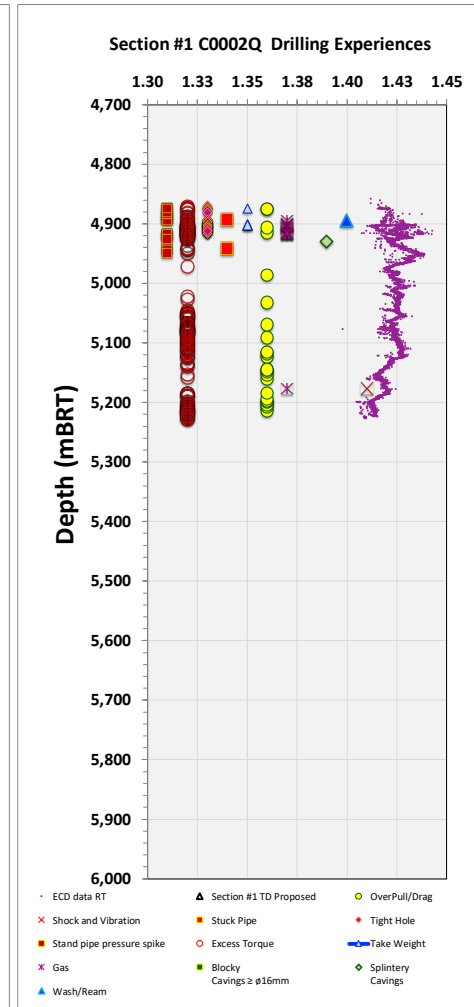


Figure 2 C0002Q Drilling Experiences