

# IODP EXP 358 Daily Geomechanics Report

Report #051 20181230

## RTG Team

RTG Supervisor(s)	David Castillo / Thomas Finkbeiner / Demian Saffer
RTG Watch Lead (00:00-12:00)	Kan Aoike
RTG Watch Lead (12:00-24:00)	Toby Colson

## Well Status

Site Name:	C0002	Hole Name:	R
Water Depth:	1,939.0 m	RT-MSL:	28.5 m
0600h Depth:	4,963.0 mBRT (4,961.0) (mTVD)	Section TD:	5,667.5 mBRT (5,664.5) (mTVD)
Section #:	0	CSG Depth/Size:	4757.0 mBRT 11-3/4 inches
Static MW:	1.39 sg	Current ECD:	(1.41) sg
FIT/LOT/ XLOT:	1.46sg FIT @ 4,757mBRT.		
Current formation/ lithology:	Shale		
Sensor Offsets from the Bit:	TeleScope 675: (Direction + Inclination: 18.00 m)		
Other BHA Offsets from the Bit:	8-1/2" Mill Tool Bit: 0~0.24 m Motor with 1.5 deg bend: 0.24~8.09 m 8.125" Stabilizer: 8.09~9.76 m 2 x 6-3/4" Non-Magnetic Drill Collar + TeleScope 675: 10.54~32.21 m 9 x 6-3/4" Drill Collar: 32.21~116.80 m 6-1/2" Hydraulic Jar: 116.80~126.73 m 2 x 6-3/4" Drill Collar: 127.73~145.39 m 12 x 5.68" Heavy Weight Drill Pipe: 146.19~257.14 m Top of BHA: 258.14 m		
Current Operations:	RIH with 8-1/2 " kick off assembly. Performed a slip and cut on the way. Commenced washing and then reaming down at 2:00 Dec.31. 4963 mBRT (bit depth) as of 06:00 Dec.31.		

## Geomechanics Alert

<b>GREEN</b>	<b>Green</b> = Projected model remains accurate White = Unanticipated deviation from model which <i>should not</i> affect drilling <b>Yellow</b> = Unanticipated deviation from model which <i>may</i> affect drilling <b>Red</b> = Imminent requirement to stop drilling
Basis for Alert Level + Recommendations	No further observations have been made to suggest any change in wellbore condition 1.39 sg remains recommended MW for Section 1.

## Principal Findings

N/A

# IODP EXP 358 Daily Geomechanics Report

## Report #051 20181230

### Observations Summary

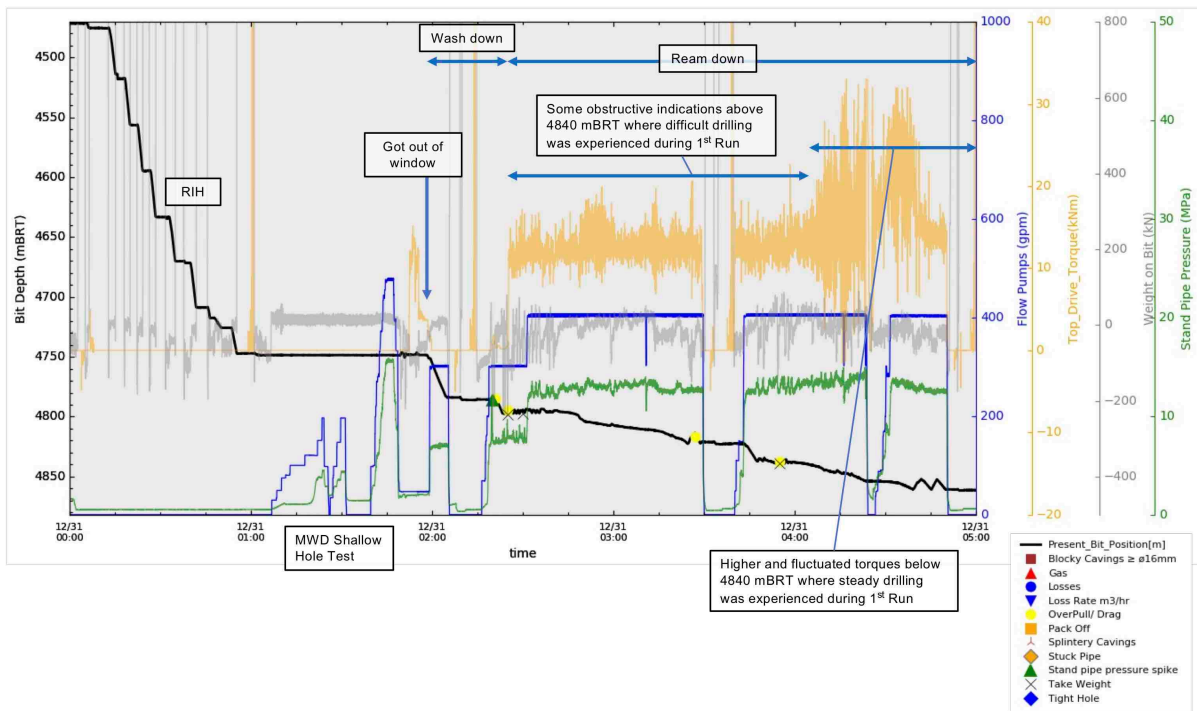
Use this space to discuss any observations while drilling, running casing etc.

<b>Fracture Gradient</b>	N/A
<b>Pore Pressure</b>	No indications of overpressure observed.
<b>Wellbore Breakout</b>	N/A
<b>Tensile Failure</b>	N/A
<b>Drilling Parameters</b>	N/A
<b>Other</b>	N/A

### Analysis

#### Drilling Experience Analysis

Some obstructive indications were observed while washing and reaming down from the window to 4840 mBRT where difficult drilling was experienced during the 1<sup>st</sup> kick-off run. Enlarged and distorted hole shape is expected in this interval. Below 4840 mBRT where steady drilling was performed, higher and fluctuated torques became marked. Time-dependent hole deterioration may have been progressed to some extent below 4840 mBRT during the past 24 hours. However, no other evidence has been seen to suggest hole deterioration.



**Figure 1:** Drilling experiences over the last 5 hrs (~05:00 Dec.31).

#### Cuttings and Cavings Analysis

No return to shakers at time of report.

#### LWD Data Analysis

N/A

#### SFIB Analysis

No further updates

# IODP EXP 358 Daily Geomechanics Report

## Report #051 20181230

### Geomechanical Model Review

No change in the current stress model.

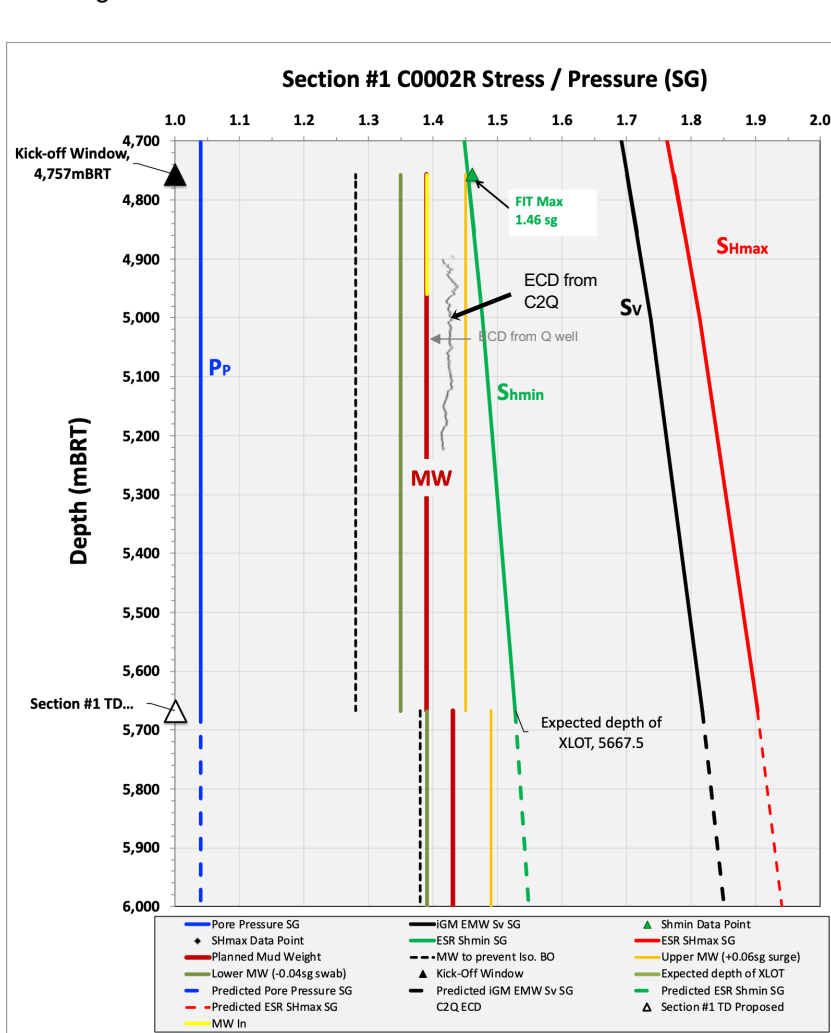


Figure 2: Current stress model for Section #1

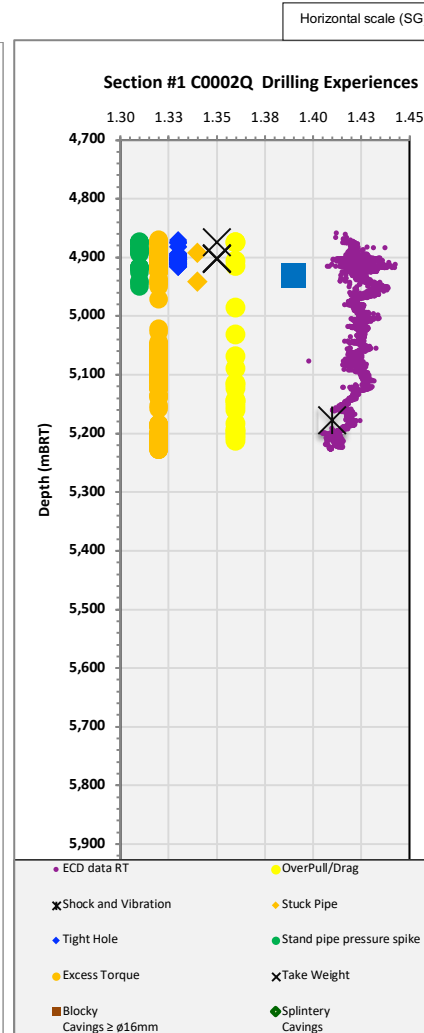


Figure 3: C0002Q Drilling Experiences

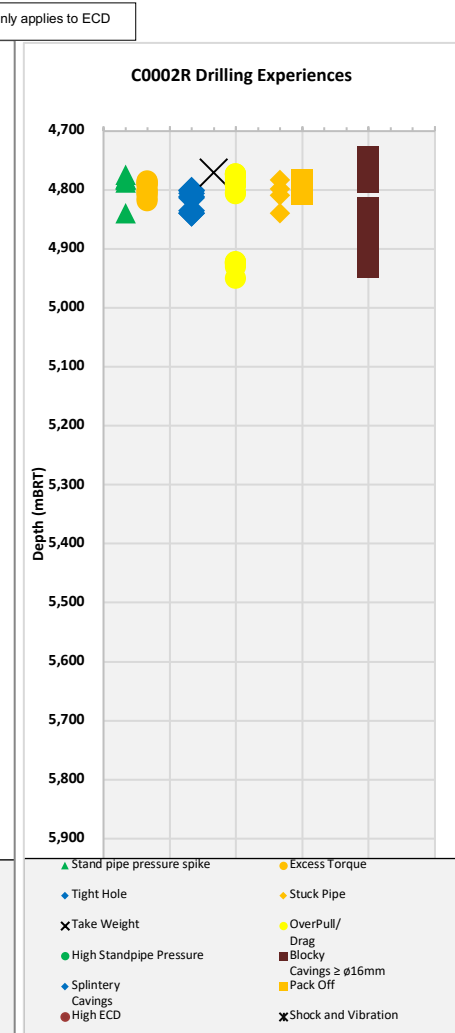


Figure 4: C0002R Drilling Experiences