

# IODP EXP 358 Daily Geomechanics Report

Report #057 20190105

## RTG Team

RTG Supervisor(s)	David Castillo / Thomas Finkbeiner / Demian Saffer
RTG Watch Lead (00:00-12:00)	Emily Wisbey
RTG Watch Lead (12:00-24:00)	Toby Colson

## Well Status

Site Name:	C0002	Hole Name:	R
Water Depth:	1,939.0 m	RT-MSL:	28.5 m
0600h Depth:	5,052.0 mBRT (5049.0 mTVD)	Section TD:	5,667.5 mBRT (5,664.5 mTVD)
Section #:	0	CSG Depth/Size:	4757.0 mBRT 11-3/4 inches
Static MW:	1.39 sg	Current ECD:	(1.41) sg
FIT/LOT/ XLOT:	1.46sg FIT @ 4,757mBRT.		
Current formation/ lithology:	Shale		
Sensor Offsets from the Bit:	arcVISION 675: (APWD: 3.61 m, Resistivity: 4.32 m, GR: 4.37 m) TeleScope 675: (IWOB: 8.39m, Direction + Inclination: 11.76 m)		
Other BHA Offsets from the Bit:	8-1/4" Stabilizer: 17.23 – 18.9 m 8-1/4" x 12-1/4" Z-reamer: 28.528-29.62 m 8-1/8" Stabilizer: 39.64 – 41.30 m Top of BHA: 331 m		
Current Operations:	POOH and laid down 8-1/2" motor BHA. Completed rig service. Made up and commenced RIH with 8-1/2" x 12-1/4" LWD BHA.		

## Geomechanics Alert

<b>GREEN</b>	<p><b>Green</b> = Projected model remains accurate                  White = Unanticipated deviation from model which <i>should not</i> affect drilling                  Yellow = Unanticipated deviation from model which <i>may</i> affect drilling                  Red = Imminent requirement to stop drilling</p>
<b>Basis for Alert Level + Recommendations</b>	<p>1.39 sg remains recommended MW for Section 1.                  Observation suggests hole cleaning remains a key factor in current wellbore condition.</p>

## Principal Findings

N/A

# IODP EXP 358 Daily Geomechanics Report

Report #057 20190105

## Observations Summary

*Use this space to discuss any observations while drilling, running casing etc.*

<b>Fracture Gradient</b>	N/A
<b>Pore Pressure</b>	No indications of overpressure observed.
<b>Wellbore Breakout</b>	N/A
<b>Tensile Failure</b>	N/A
<b>Drilling Parameters</b>	N/A
<b>Other</b>	N/A

## Analysis

### Drilling Experience Analysis

N/A

### Cuttings and Cavings Analysis

N/A

### LWD Data Analysis

N/A

### SFIB Analysis

No further updates.

# IODP EXP 358 Daily Geomechanics Report

## Report #057 20190105

### Geomechanical Model Review

No change in the current stress model.

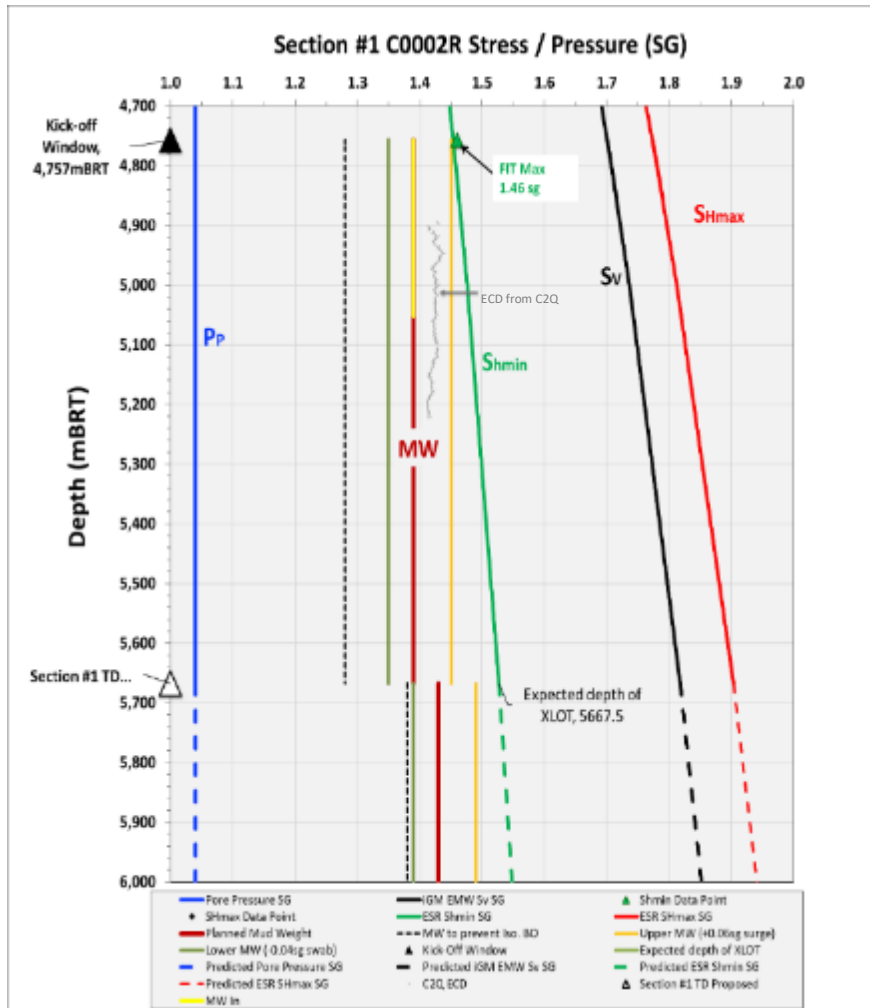


Figure 1 Current stress model for Section #1

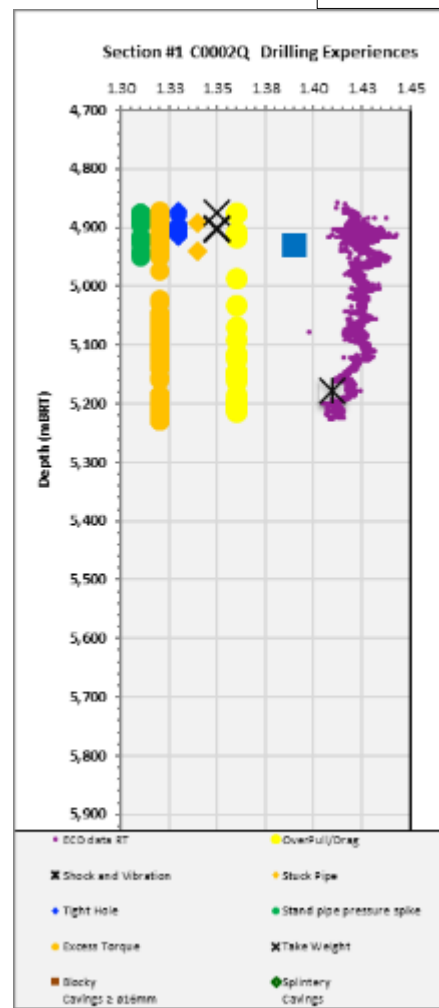


Figure 2 C0002Q Drilling Experiences

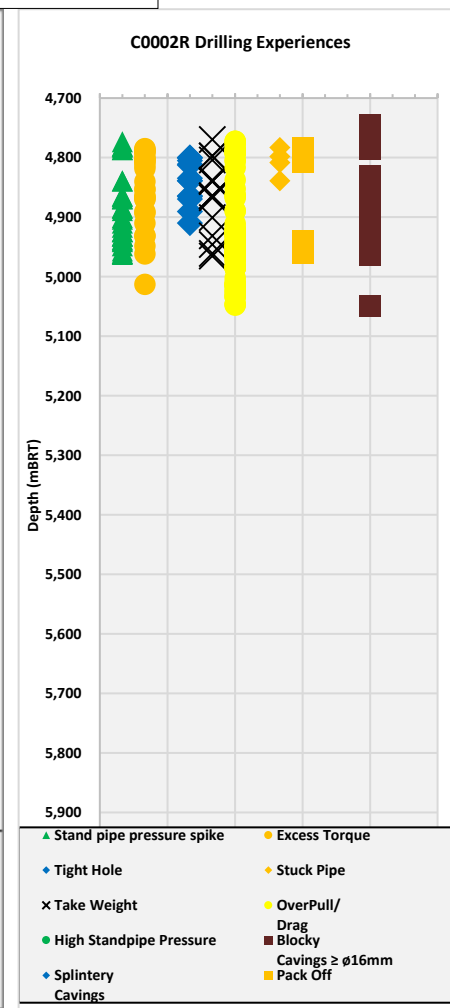


Figure 3 C0002R Drilling Experiences