

# IODP EXP 358 Daily Geomechanics Report

Report #066 20190114

## RTG Team

RTG Supervisor(s)	David Castillo / Thomas Finkbeiner / Demian Saffer
RTG Watch Lead (00:00-12:00)	Emily Wisbey
RTG Watch Lead (12:00-24:00)	Toby Colson

## Well Status

Site Name:	C0002	Hole Name:	R
Water Depth:	1,939.0 m	RT-MSL:	28.5 m
0600h Hole Depth:	5,052.0 mBRT (5049.0 mTVD)	Section TD:	5,667.5 mBRT (5,664.5 mTVD)
Section #:	1	CSG Depth/Size:	4757.0 mBRT 11-3/4" inches
Static MW:	1.39 sg	Current ECD:	- sg
FIT/LOT/ XLOT:	1.46sg FIT @ 4,757mBRT.		
Current formation/ lithology:	Shale		
Sensor Offsets from the Bit:	N/A		
Other BHA Offsets from the Bit:	N/A		
Current Operations:	RIH with 9-5/8" x 11-3/4" ESET to 4817mBRT on drillpipe. Cemented 9-5/8" x 11-3/4" ESET casing. Expanded 9-5/8" casing to 11-3/4". POOH inner string assembly to 1,867mBRT.		

## Geomechanics Alert

<b>GREEN</b>	<p><b>Green</b> = Projected model remains accurate</p> <p>White = Unanticipated deviation from model which <i>should not</i> affect drilling</p> <p><b>Yellow</b> = Unanticipated deviation from model which <i>may</i> affect drilling</p> <p><b>Red</b> = Imminent requirement to stop drilling</p>
Basis for Alert Level + Recommendations	<p>1.39 sg remains recommended MW for Section 1.</p> <p>No further change in wellbore condition has been observed.</p>

## Principal Findings

N/A

# IODP EXP 358 Daily Geomechanics Report

## Report #066 20190114

### Observations Summary

Fracture Gradient	N/A
Pore Pressure	N/A
Wellbore Breakout	N/A
Tensile Failure	N/A
Drilling Parameters	N/A
Other	N/A

### Analysis

#### Drilling Experience Analysis

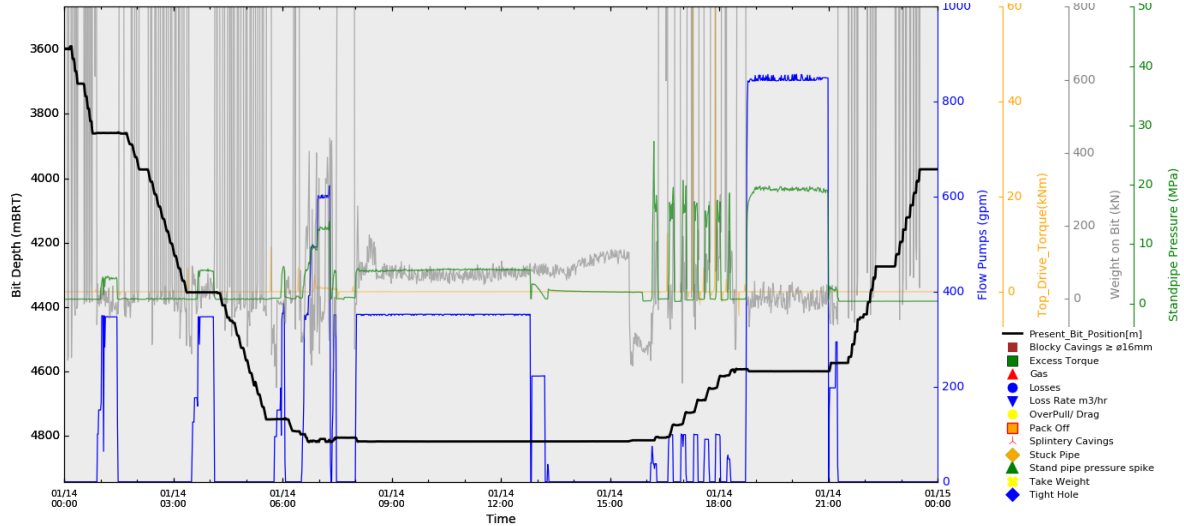


Figure 1 Drilling experiences over the last 24 hrs

#### Cuttings and Cavings Analysis

N/A

#### LWD Data Analysis

N/A

#### SFIB Analysis

No further updates.

# IODP EXP 358 Daily Geomechanics Report

## Report #066 20190114

### Geomechanical Model Review

No change in the current stress model.

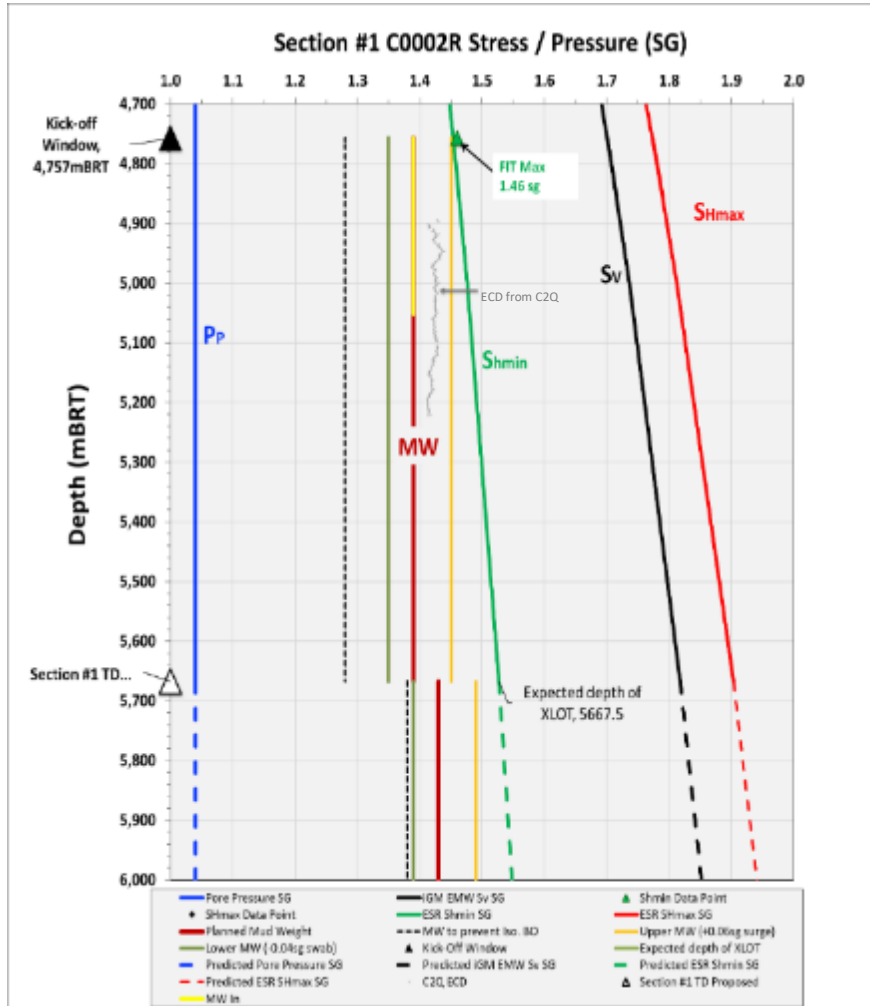


Figure 2 Current stress model for Section #1

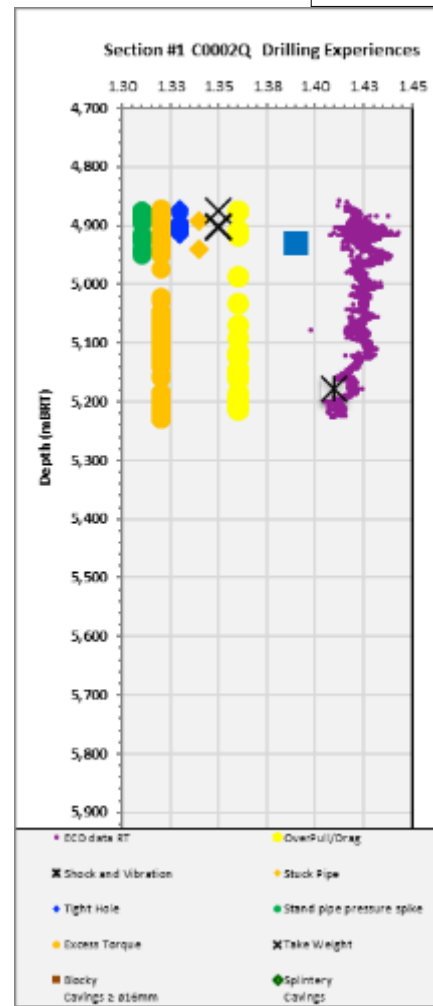


Figure 3 C0002Q Drilling Experiences

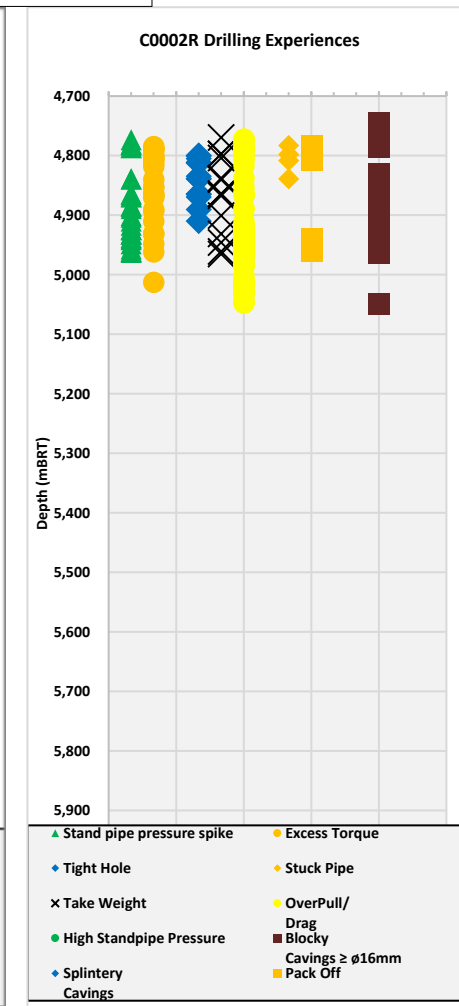


Figure 4 C0002R Drilling Experiences