

IODP EXP 358 Daily Geomechanics Report

Report #067 20190115

RTG Team

RTG Supervisor(s)	David Castillo / Thomas Finkbeiner / Demian Saffer
RTG Watch Lead (00:00-12:00)	Emily Wisbey
RTG Watch Lead (12:00-24:00)	Kan Aoike

Well Status

Site Name:	C0002	Hole Name:	R
Water Depth:	1,939.0 m	RT-MSL:	28.5 m
0600h Hole Depth:	5,052.0 mBRT (5049.0 mTVD)	Section TD:	5,667.5 mBRT (5,664.5 mTVD)
Section #:	1	CSG Depth/Size:	4,818.0 mBRT 11-3/4" ESET inches
Static MW:	1.39 sg	Current ECD:	- sg
FIT/LOT/ XLOT:	N/A Note: 1.46sg FIT @ 4,757mBRT		
Current formation/ lithology:	Shale		
Sensor Offsets from the Bit:	N/A		
Other BHA Offsets from the Bit:	N/A		
Current Operations:	Continued POOH 9-5/8" x 11-3/4" ESET inner string assembly to the surface. MU and RIH Drill Out Assembly from surface to 4,593mBRT. Commenced washing down to tag TOC.		

Geomechanics Alert

GREEN	<p>Green = Projected model remains accurate White = Unanticipated deviation from model which <i>should not</i> affect drilling Yellow = Unanticipated deviation from model which <i>may</i> affect drilling Red = Imminent requirement to stop drilling</p>
Basis for Alert Level + Recommendations	<p>1.39 sg remains recommended MW for Section 1. No further change in wellbore condition has been observed.</p>

Principal Findings

N/A

IODP EXP 358 Daily Geomechanics Report

Report #067 20190115

Observations Summary

Fracture Gradient	N/A
Pore Pressure	N/A
Wellbore Breakout	N/A
Tensile Failure	N/A
Drilling Parameters	N/A
Other	N/A

Analysis

Drilling Experience Analysis

N/A.

Cuttings and Cavings Analysis

N/A

LWD Data Analysis

N/A

SFIB Analysis

No further updates.

IODP EXP 358 Daily Geomechanics Report

Report #067 20190115

Geomechanical Model Review

No change in the current stress model.

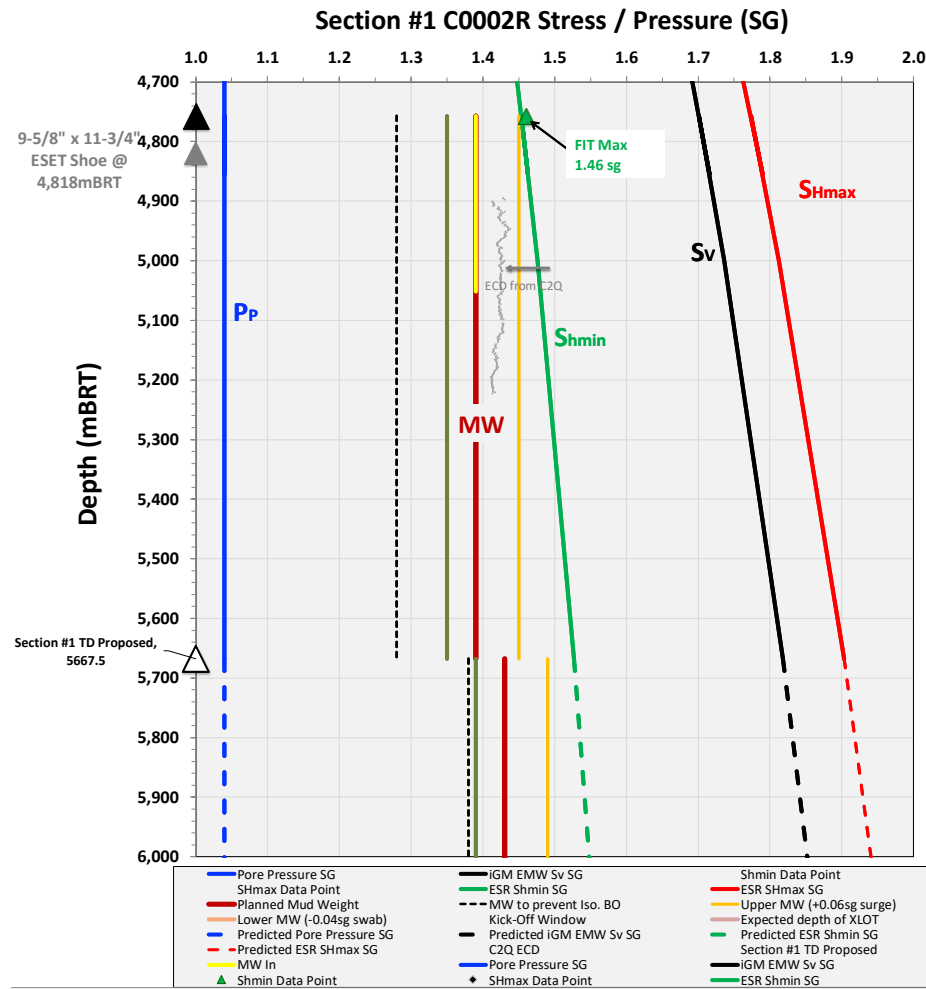


Figure 1 Current stress model for Section #1

Horizontal scale (SG) only applies to ECD

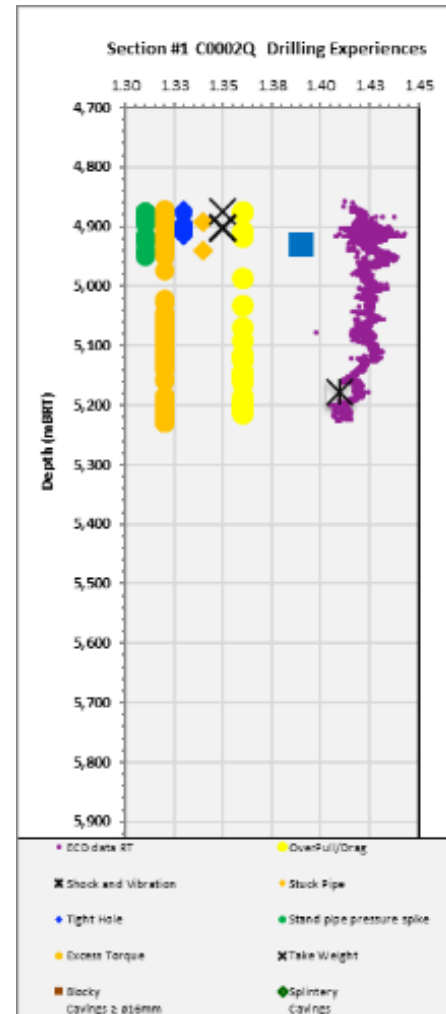


Figure 2 C0002Q Drilling Experiences

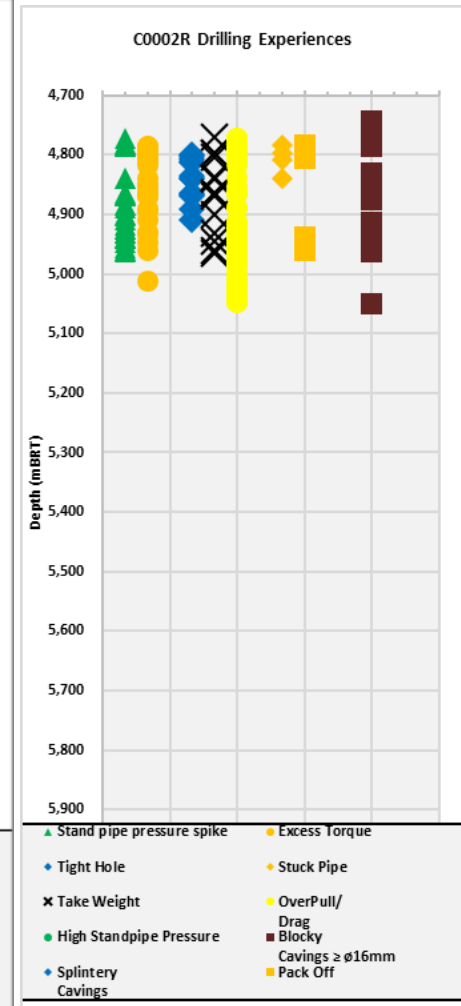


Figure 3 C0002R Drilling Experiences