

IODP EXP 358 Daily Geomechanics Report

Report #068 20190116

RTG Team

RTG Supervisor(s)	David Castillo / Thomas Finkbeiner / Demian Saffer
RTG Watch Lead (00:00-12:00)	Emily Wisbey
RTG Watch Lead (12:00-24:00)	Kan Aoike

Well Status

Site Name:	C0002	Hole Name:	R
Water Depth:	1,939.0 m	RT-MSL:	28.5 m
0600h Hole Depth:	5,052.0 mBRT (5049.0 mTVD)	Section TD:	5,667.5 mBRT (5,664.5 mTVD)
Section #:	1	CSG Depth/Size:	4,818.0 mBRT 11-3/4" ESET inches
Static MW:	1.39 sg	Current ECD:	- sg
FIT/LOT/ XLOT:	N/A Note: 1.46sg FIT @ 4,757mBRT		
Current formation/ lithology:	Shale		
Sensor Offsets from the Bit:	N/A		
Other BHA Offsets from the Bit:	N/A		
Current Operations:	<p>Continued RIH Drill Out Assembly. Washed down to tagged TOC at 4,815mBRT. Picked up to confirm parameters and took weight at 4,812mBRT while washing down. POOH above 9-5/8" x 11-3/4" top to clear junk mill from potential debris. Washed down Drill Out Assembly to TOC and continued to drill out ESET casing shoe. Recognized obstacles inside the casing at 4812 mBRT and 4815 mBRT. Once picked up BHA then resumed to wash/ream down. Observed drilling break from 4,815mBRT (suspected 9-5/8" x 11-3/4" shoe) and Encountered high standpipe pressure and TDS stall. Continued attempting to free the BHA, firing the jars up.</p>		

Geomechanics Alert

GREEN	<p>Green = Projected model remains accurate White = Unanticipated deviation from model which <i>should not</i> affect drilling Yellow = Unanticipated deviation from model which <i>may</i> affect drilling Red = Imminent requirement to stop drilling</p>
Basis for Alert Level + Recommendations	<p>1.39 sg remains recommended MW for Section 1. No further change in wellbore condition has been observed.</p>

Principal Findings

N/A

IODP EXP 358 Daily Geomechanics Report

Report #068 20190116

Observations Summary

Fracture Gradient	N/A
Pore Pressure	N/A
Wellbore Breakout	N/A
Tensile Failure	N/A
Drilling Parameters	N/A
Other	N/A

Analysis

Drilling Experience Analysis

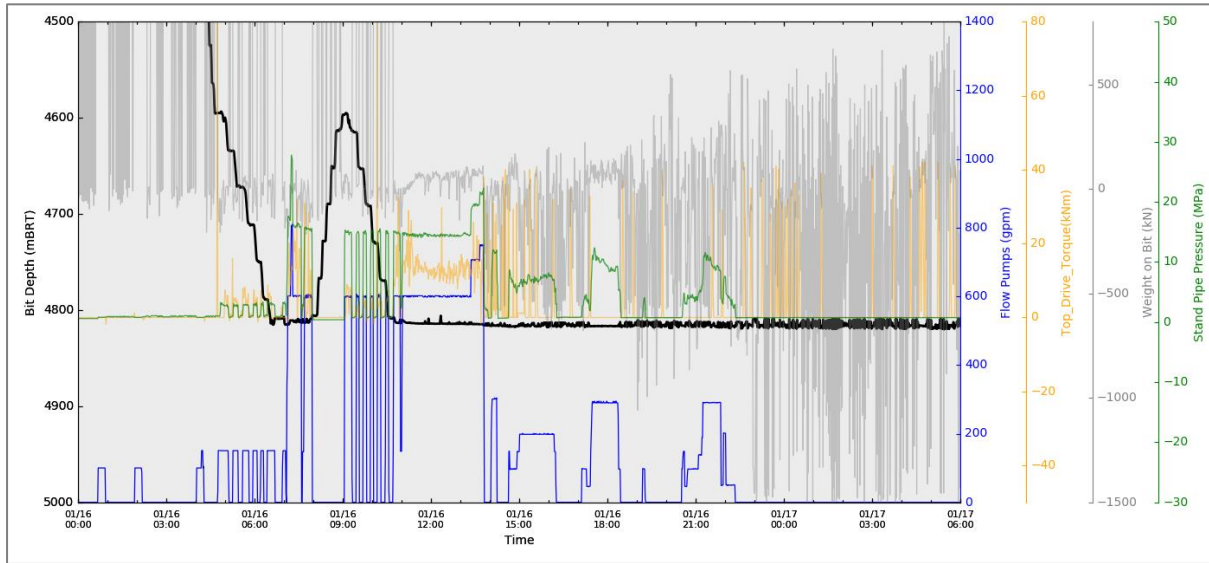


Figure 1 Drilling Experiences over last 24hrs

Cuttings and Cavings Analysis

No RTG samples collected due to intermittent circulation however large cement fragments (15-30mm) appeared at the shakers prior to stuck pipe.

LWD Data Analysis

N/A

SFIB Analysis

No further updates.

IODP EXP 358 Daily Geomechanics Report

Report #068 20190116

Geomechanical Model Review

No change in the current stress model.

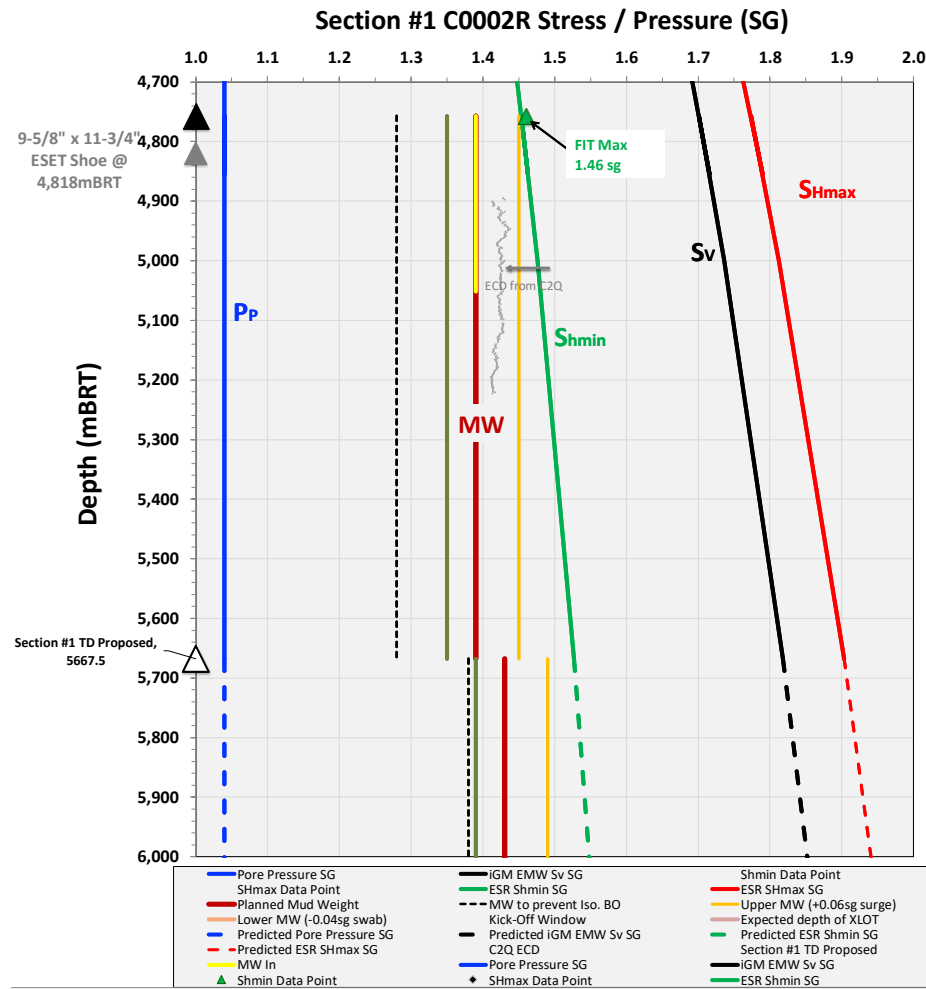


Figure 2 Current stress model for Section #1

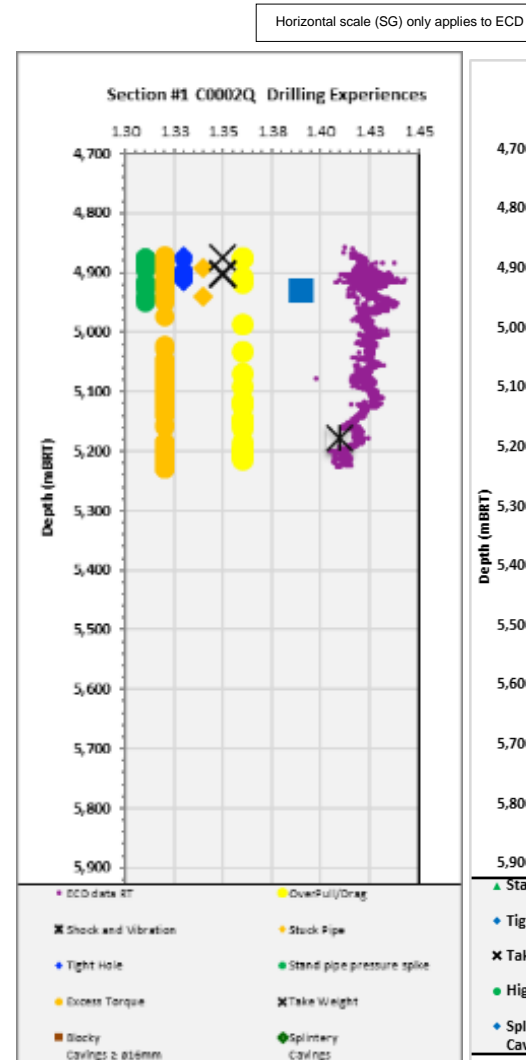


Figure 3 C0002Q Drilling Experiences

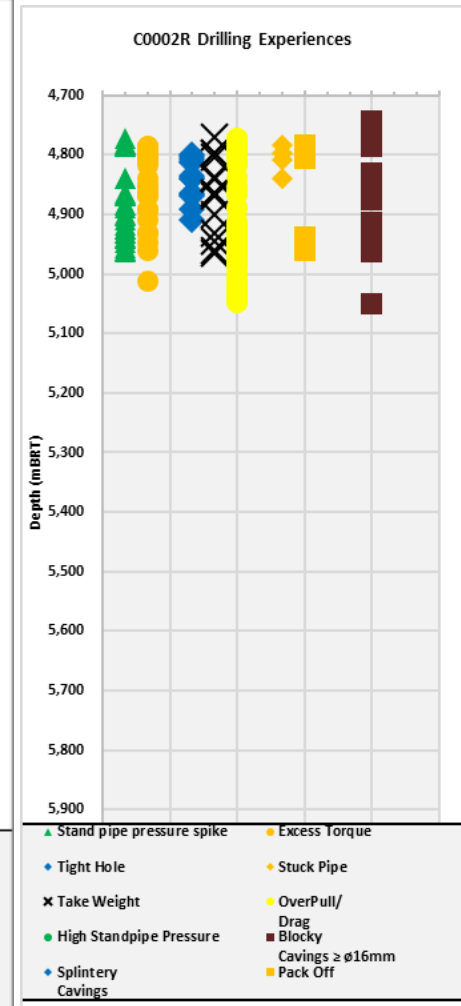


Figure 4 C0002R Drilling Experiences