

IODP EXP 358 Daily Geomechanics Report

Report #072 20190120

RTG Team

RTG Supervisor(s)	David Castillo / Thomas Finkbeiner / Demian Saffer
RTG Watch Lead (00:00-12:00)	Emily Wisbey
RTG Watch Lead (12:00-24:00)	Kan Aoike

Well Status

Site Name:	C0002	Hole Name:	R
Water Depth:	1,939.0 m	RT-MSL:	28.5 m
0600h Hole Depth:	5,052.0 mBRT (5049.0 mTVD)	Section TD:	5,667.5 mBRT (5,664.5 mTVD)
Section #:	1	CSG Depth/Size:	4,818.0 mBRT 11-3/4" ESET inches
Static MW:	1.39 sg	Current ECD:	- sg
FIT/LOT/ XLOT:	N/A Note: 1.46sg FIT @ 4,757mBRT		
Current formation/ lithology:	Shale		
Sensor Offsets from the Bit:	N/A		
Other BHA Offsets from the Bit:	N/A		
Current Operations:	Continued POOH the string to surface. No damage was observed on the unscrewed thread. MU and RIH fishing BHA from surface to top of fish. Successfully screwed into top connection and commenced jarring upwards in attempt to free drill out cement BHA.		

Geomechanics Alert

GREEN	<p>Green = Projected model remains accurate White = Unanticipated deviation from model which <i>should not</i> affect drilling Yellow = Unanticipated deviation from model which <i>may</i> affect drilling Red = Imminent requirement to stop drilling</p>
Basis for Alert Level + Recommendations	<p>1.39 sg remains recommended MW for Section 1. No further change in wellbore condition has been observed.</p>

Principal Findings

N/A

IODP EXP 358 Daily Geomechanics Report

Report #072 20190120

Observations Summary

Fracture Gradient	N/A
Pore Pressure	N/A
Wellbore Breakout	N/A
Tensile Failure	N/A
Drilling Parameters	N/A
Other	N/A

Analysis

Drilling Experience Analysis

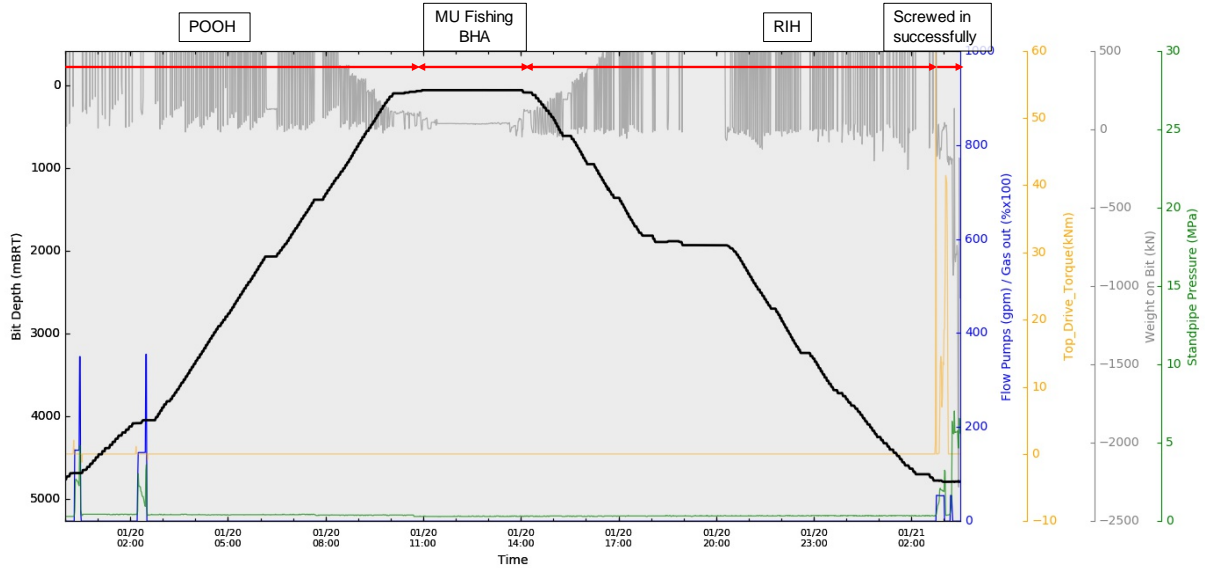


Figure 1 Drilling Experiences over last 27hrs

No particular indication related to borehole condition was observed.

Cuttings and Cavings Analysis

N/A – Only circulating the riser.

LWD Data Analysis

N/A

SFIB Analysis

No further updates.

IODP EXP 358 Daily Geomechanics Report

Report #072 20190120

Geomechanical Model Review

No change in the current stress model.

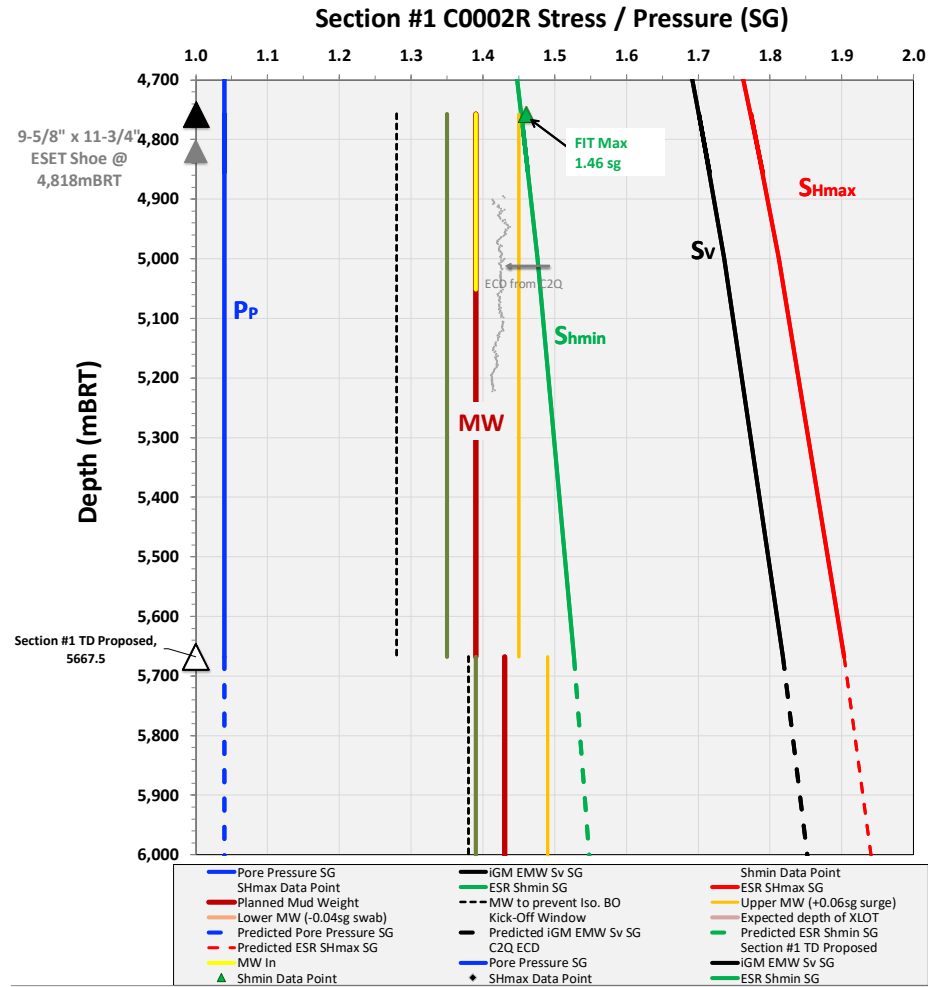


Figure 2 Current stress model for Section #1