

# IODP EXP 358 Daily Geomechanics Report

Report #075 20190123

## RTG Team

RTG Supervisor(s)	David Castillo / Thomas Finkbeiner / Demian Saffer
RTG Watch Lead (00:00-12:00)	Kan Aoike
RTG Watch Lead (12:00-24:00)	Adam Wspanialy

## Well Status

Site Name:	C0002	Hole Name:	R
Water Depth:	1,939.0 m	RT-MSL:	28.5 m
0600h Hole Depth:	5,052.0 mBRT (5049.0) (mTVD)	Section TD:	5,667.5 mBRT (5,664.5) (mTVD)
Section #:	1	CSG Depth/Size:	4,818.0 mBRT 11-3/4" ESET inches
Static MW:	1.39 sg	Current ECD:	- sg
FIT/LOT/ XLOT:	N/A Note: 1.46sg FIT @ 4,757mBRT		
Current formation/ lithology:	Shale		
Sensor Offsets from the Bit:	N/A		
Other BHA Offsets from the Bit:	N/A		
Current Operations:	Continued work pipe to free the drill out cement BHA. Commenced preparation for wireline operations to recover the fishing BHA.		

## Geomechanics Alert

<b>GREEN</b>	<p><b>Green</b> = Projected model remains accurate  <b>White</b> = Unanticipated deviation from model which <i>should not</i> affect drilling  <b>Yellow</b> = Unanticipated deviation from model which <i>may</i> affect drilling  <b>Red</b> = Imminent requirement to stop drilling</p>
Basis for Alert Level + Recommendations	<p>1.39 sg remains recommended MW for Section 1.          No further change in wellbore condition has been observed.</p>

## Principal Findings

N/A

# IODP EXP 358 Daily Geomechanics Report

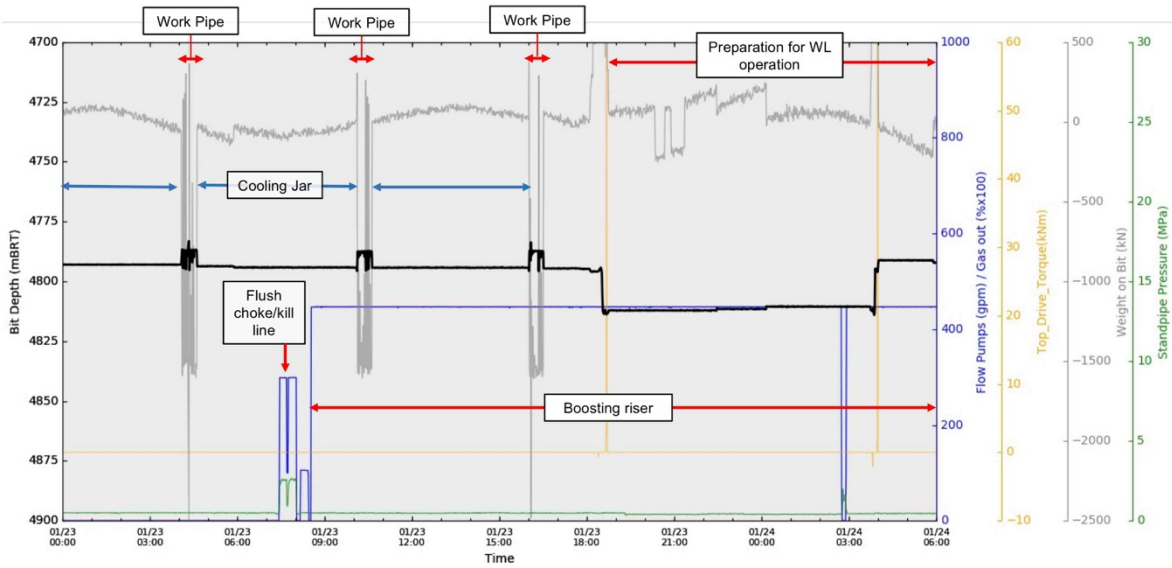
## Report #075 20190123

### Observations Summary

Fracture Gradient	N/A
Pore Pressure	N/A
Wellbore Breakout	N/A
Tensile Failure	N/A
Drilling Parameters	N/A
Other	N/A

### Analysis

#### Drilling Experience Analysis



**Figure 1 Drilling Experiences over last 30hrs**

No particular indication related to borehole condition was observed. Alternate working the pipe and cooling down the jar was carried out up to 16:30 hrs. It was difficult to cool down the jarring equipment sufficiently because of no circulation due to debris plugging the bit nozzles and high static formation temperature at the BHA (90-100°C). Consequently, the jar was fired less frequently.

#### Cuttings and Cavings Analysis

N/A – Only circulating the riser.

#### LWD Data Analysis

N/A

#### SFIB Analysis

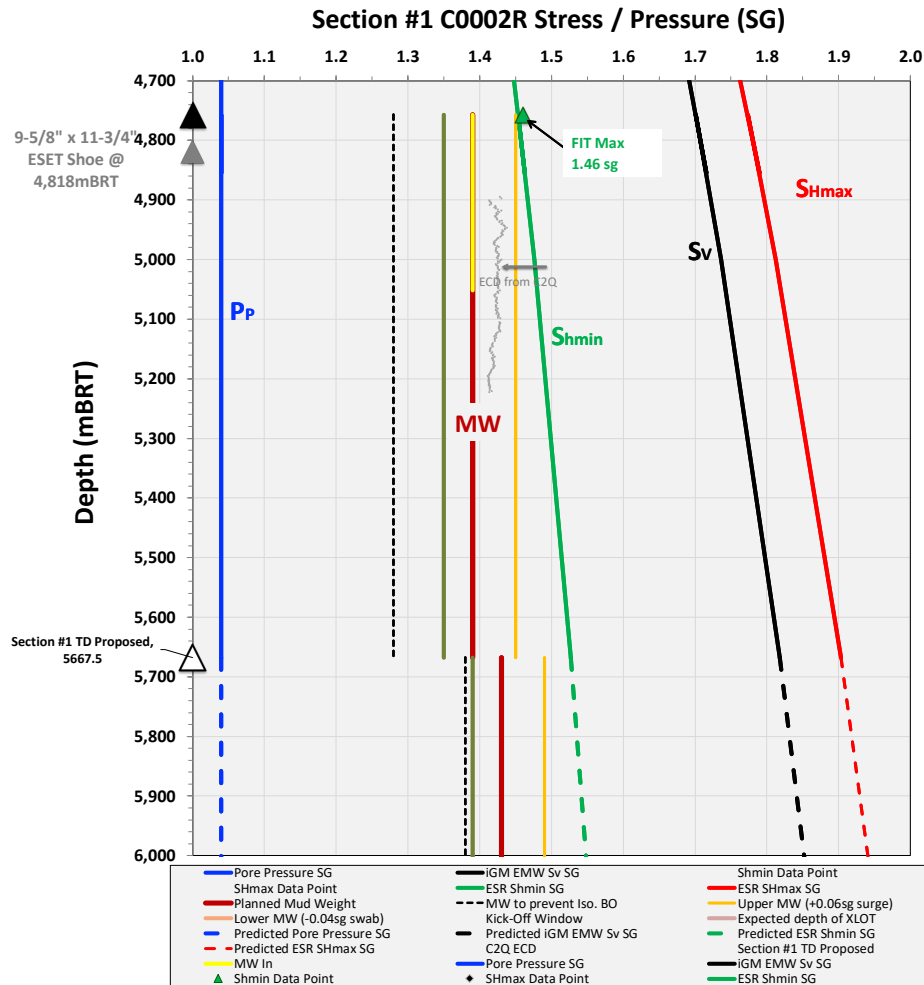
No further updates.

# IODP EXP 358 Daily Geomechanics Report

## Report #075 20190123

### Geomechanical Model Review

No change in the current stress model.



**Figure 2 Current stress model for Section #1**