

IODP EXP 358 Daily Geomechanics Report

Report #076 20190124

RTG Team

RTG Supervisor(s)	David Castillo / Thomas Finkbeiner / Demian Saffer
RTG Watch Lead (00:00-12:00)	Kan Aoike
RTG Watch Lead (12:00-24:00)	Adam Wspanialy

Well Status

Site Name:	C0002	Hole Name:	R
Water Depth:	1,939.0 m	RT-MSL:	28.5 m
0600h Hole Depth:	5,052.0 mBRT (5049.0 mTVD)	Section TD:	5,667.5 mBRT (5,664.5 mTVD)
Section #:	1	CSG Depth/Size:	4,818.0 mBRT 11-3/4" ESET inches
Static MW:	1.39 sg	Current ECD:	- sg
FIT/LOT/ XLOT:	N/A Note: 1.46sg FIT @ 4,757mBRT		
Current formation/ lithology:	Shale		
Sensor Offsets from the Bit:	N/A		
Other BHA Offsets from the Bit:	N/A		
Current Operations:	Rigged up wireline equipment. Run Gauge Cutter, Gauge Cutter with Bull Nose and then smaller Gauge Cutter. Attempted to pass the tool through the fishing BHA but no success with the 3 runs as of 06:00 Jan 25 due to probably fill (scales) inside the string up to around the Jar (32 m above the bit).		

Geomechanics Alert

GREEN	<p>Green = Projected model remains accurate White = Unanticipated deviation from model which <i>should not</i> affect drilling Yellow = Unanticipated deviation from model which <i>may</i> affect drilling Red = Imminent requirement to stop drilling</p>
Basis for Alert Level + Recommendations	<p>1.39 sg remains recommended MW for Section 1. No further change in wellbore condition has been observed.</p>

Principal Findings

N/A

IODP EXP 358 Daily Geomechanics Report

Report #076 20190124

Observations Summary

Fracture Gradient	N/A
Pore Pressure	N/A
Wellbore Breakout	N/A
Tensile Failure	N/A
Drilling Parameters	N/A
Other	N/A

Analysis

Drilling Experience Analysis

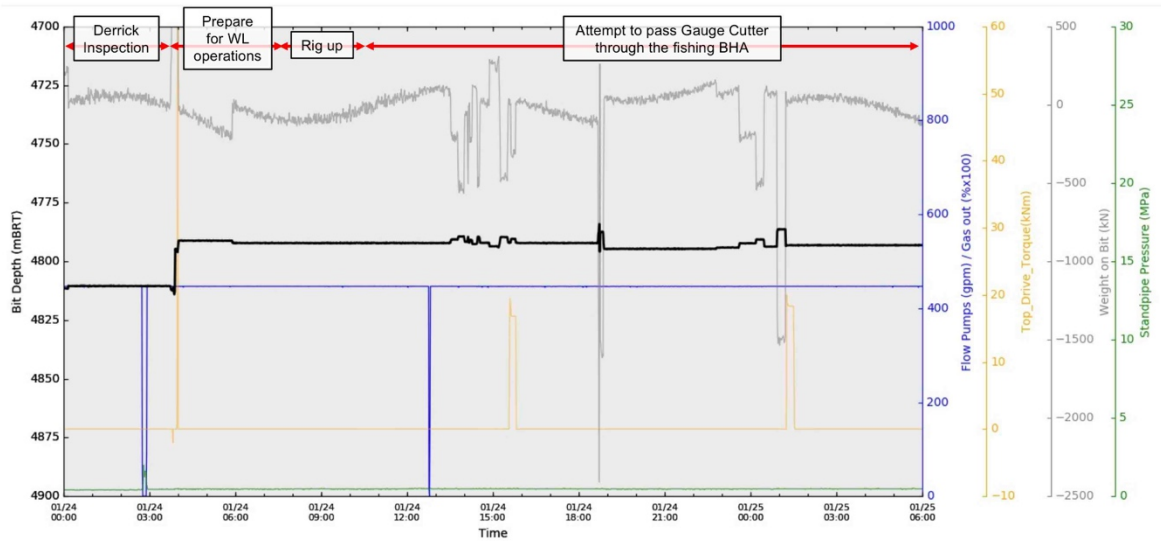


Figure 1 Drilling Experiences over last 30hrs

No particular indication related to borehole condition was observed.

Cuttings and Cavings Analysis

N/A – Only circulating the riser.

LWD Data Analysis

N/A

SFIB Analysis

No further updates.

IODP EXP 358 Daily Geomechanics Report

Report #076 20190124

Geomechanical Model Review

No change in the current stress model.

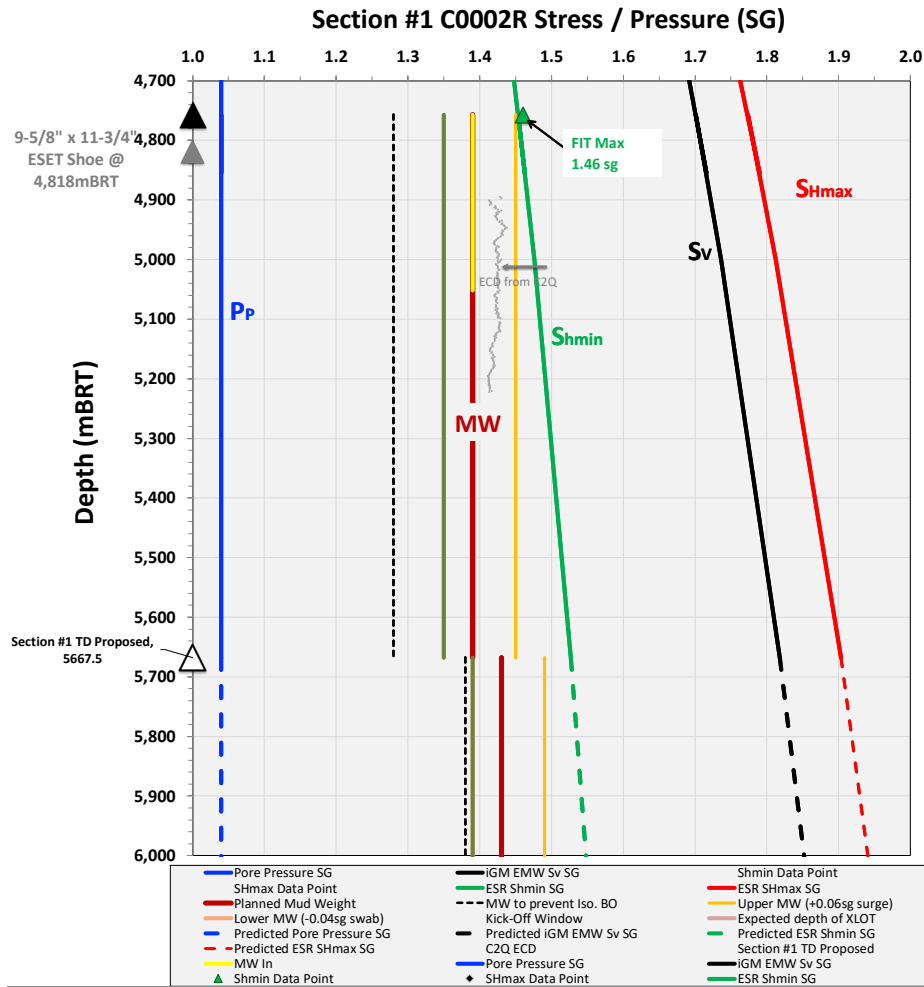


Figure 2 Current stress model for Section #1